

Proposed Skate Plaza Site Transfer Ordinance

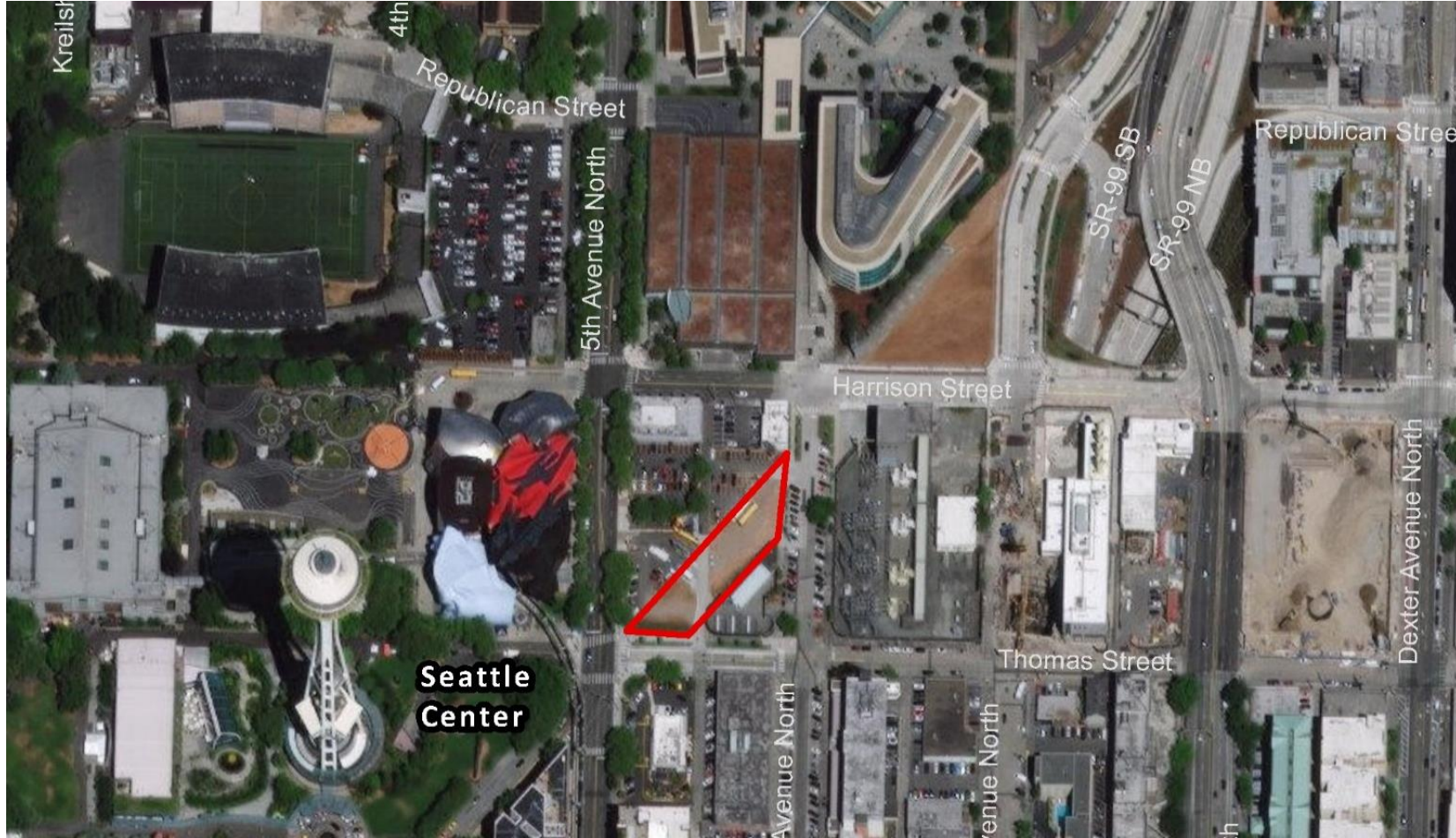
Select Committee on Civic Arenas

Skate Plaza Site Transfer Ordinance

- Partial jurisdiction of the portion of Broad St between Taylor Ave N and Thomas St will be transferred, without charge, from SDOT to Seattle Center for constructing, operating and maintaining a public skate plaza.
- The Seattle Center skatepark was among the facilities that were demolished as part of the Seattle Center Arena renovation.
- The 2019 Adopted and 2020 Endorsed Budget includes funding to relocate and replace the Seattle Center skatepark.
- The portion of Broad St. proposed for the skate plaza project was permanently closed to vehicular traffic as part of the Mercer Corridor Project West Phase.



Skate Plaza Site Transfer Ordinance



 Site

Skate Plaza Site Transfer Ordinance

- Seattle Center shall be responsible for all costs of the skate plaza.
- Seattle Center shall be the regulatory authority for planning, constructing and managing the skate plaza. SDOT shall be the regulatory authority for all activities affecting utilities in the Broad St. right-of-way.
- The project will include at least one pedestrian pathway.
- Vehicular access for the SCL Broad Annex shall remain as long as required by SCL.
- Vehicular access through the skate plaza will provide for alley access and service needs of the block to the north of the skate plaza, until access is no longer required.

