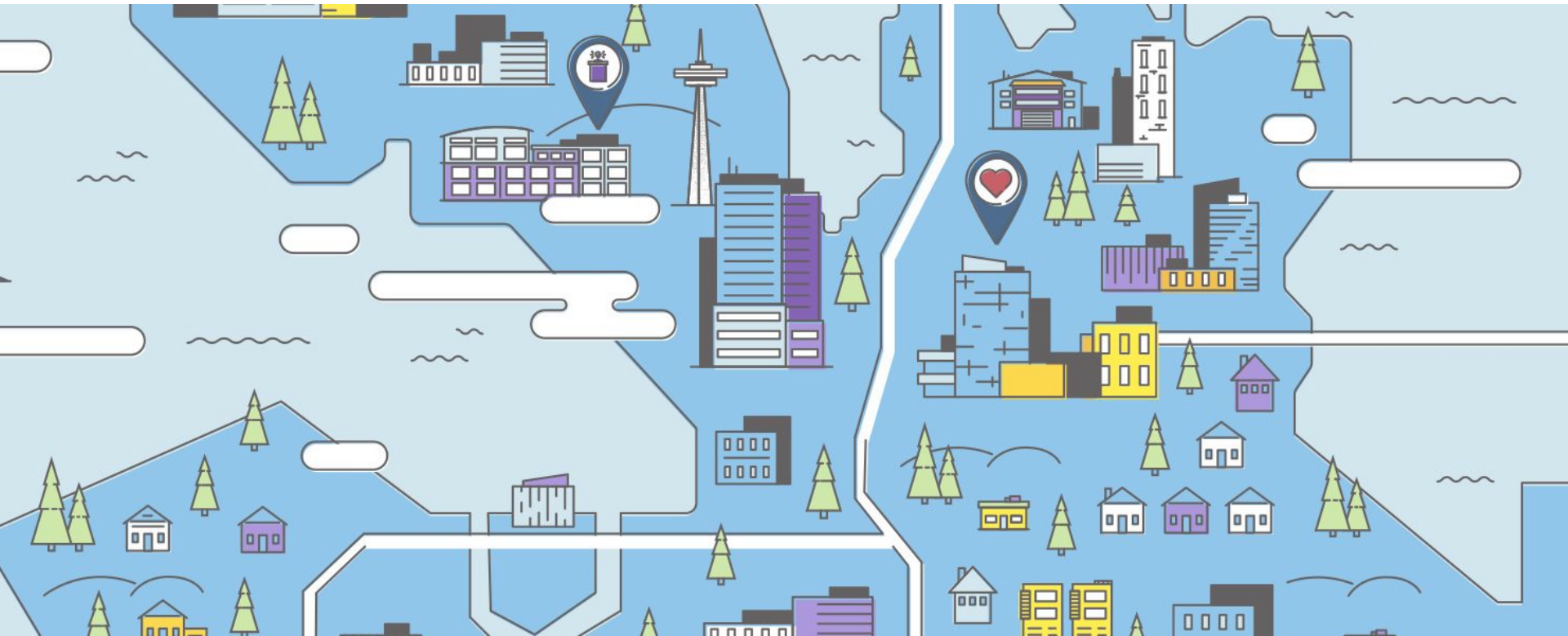


# Upcoming Changes to Design Review: Early Community Outreach



**Seattle** Department of  
Construction & Inspections



**Seattle**  
Neighborhoods

City Council  
Planning, Land Use, and Zoning Committee

June 20, 2018

# Today

---

- Summary of Changes
- Early Community Outreach
  - New Director's Rule
  - New Webpage with Resources
  - Upcoming Info Sessions

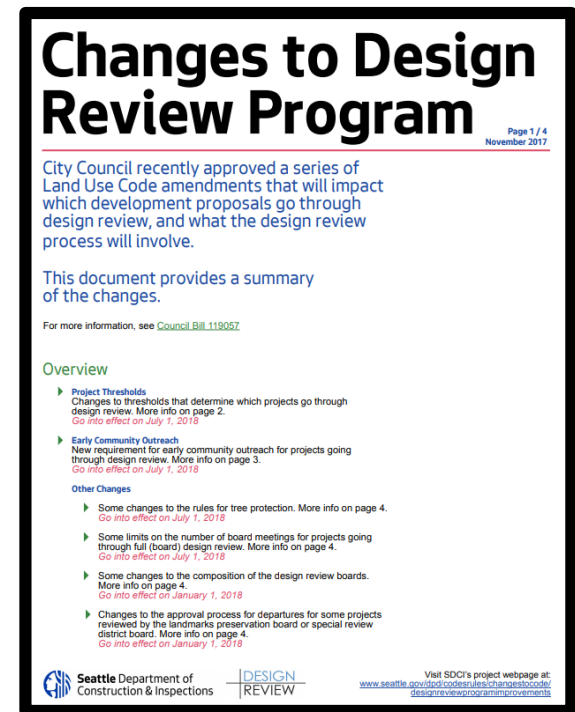
# Upcoming Changes to Design Review

## Changes to Design Review Program

- Ordinance [125429](#)
- Adopted in October 2017

## Starting on July 1:

- Modified Project Thresholds
- New Early Community Outreach
- New Central Area Board
- Other Process Changes



**Changes to Design Review Program** Page 1 / 4  
November 2017

City Council recently approved a series of Land Use Code amendments that will impact which development proposals go through design review, and what the design review process will involve.

This document provides a summary of the changes.



For more information, see [Council Bill 119057](#).

**Overview**

- ▶ **Project Thresholds**  
Changes to thresholds that determine which projects go through design review. More info on page 2.  
*Go into effect on July 1, 2018*
- ▶ **Early Community Outreach**  
New requirement for early community outreach for projects going through design review. More info on page 3.  
*Go into effect on July 1, 2018*

**Other Changes**

- ▶ Some changes to the rules for tree protection. More info on page 4.  
*Go into effect on July 1, 2018*
- ▶ Some limits on the number of board meetings for projects going through full (board) design review. More info on page 4.  
*Go into effect on July 1, 2018*
- ▶ Some changes to the composition of the design review boards. More info on page 4.  
*Go into effect on January 1, 2018*
- ▶ Changes to the approval process for departures for some projects reviewed by the landmarks preservation board or special review district board. More info on page 4.  
*Go into effect on January 1, 2018*

 Seattle Department of Construction & Inspections |  DESIGN REVIEW

Visit SDCI's project webpage at:  
[www.seattle.gov/developmentandinspections/designreviewprogram/government](http://www.seattle.gov/developmentandinspections/designreviewprogram/government)

Available online

# Upcoming Changes to Design Review

---

## Goals of Design Review Legislation

- Improve consistency, predictability, and efficiency of program
- Support dialogue and communication
- Set clear expectations
- Further program's purpose of encouraging better design

## Goals of new early community outreach

- Meaningful dialogue, broaden participation
- Improve understanding of local context, lead to better design
- Process is clear and predictable, provides structure but offers flexibility
- Allow Design Review meetings to focus on design
- Requires minimal resources (time and expenses)



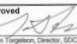

# Early Community Outreach

## Ordinance

- Requires all projects going through Design Review to conduct community outreach before beginning Early Design Guidance
- Authorizes SDCI Director to create an administrative rule (allows flexibility to adapt/refine/revise)

## New Director's Rule (SDCI/DON)

- Staff Draft in August 2017
- Public Review Draft in May 2018
- Rule finalized on June 12, 2018
- Applies to projects that submit applications for EDG after July 1

<b>SDCI</b>	Director's Rule 4-2018	
<b>DON</b>	Director's Rule 1-2018	
<b>Applicant:</b> City of Seattle Department of Construction & Inspections Department of Neighborhoods	<b>Page:</b> 1 of 9	<b>Supersedes:</b> n/a
	<b>Publication:</b> June 12, 2018	<b>Effective:</b> July 1, 2018
<b>Subject:</b>  Early Community Outreach for Design Review	<b>Code and Section Reference:</b> Chapter 23.41 SMC	<b>Type of Rule:</b> Code Interpretation and Procedures
	<b>Ordinance Authority:</b> SMC 3.06.040 & 3.35.040	
<b>Index:</b> City of Seattle Land Use Code	<b>Approved:</b>  Nathan Torgelson, Director, SDCI	<b>Date:</b> 6/12/18
	<b>Approved:</b>  Andrea Marzella, Interim Director, DCN	<b>Date:</b> 6/12/18

**RULE AUTHORITY:**  
Seattle Municipal Code subsections 23.41.014.B, 23.41.016.B, and 23.41.018.B.

**BACKGROUND:**  
Seattle Ordinance No. 125429 added requirements to Chapter 23.41 SMC that all projects going through Streamlined, Administrative, or Full Design Review shall conduct community outreach. Specifically, applicants shall prepare a community outreach plan and document compliance with the community outreach plan before the early design guidance (EDG) meeting can be scheduled.

City of Seattle Department of Construction and Inspections  
700 Fifth Avenue, Suite 2000, PO Box 34470, Seattle, WA 98124-4070  
City of Seattle Department of Neighborhoods  
600 4th Avenue, 4th Floor, PO Box 34436, Seattle, WA 98124

Nathan Torgelson, Director  
Andrea Marzella, Interim Director

Available online



# Early Community Outreach: The Basics

---

## Provides structure

- All projects must do printed, in-person, and digital outreach
- Must work with DON to customize outreach in “Equity Areas”
- DON administers, pass off to Design Review process
- Serves as baseline (many projects already go above and beyond)

## Allows flexibility

- Menu of options for different types of outreach
- Can be customized based on project size, location, etc.

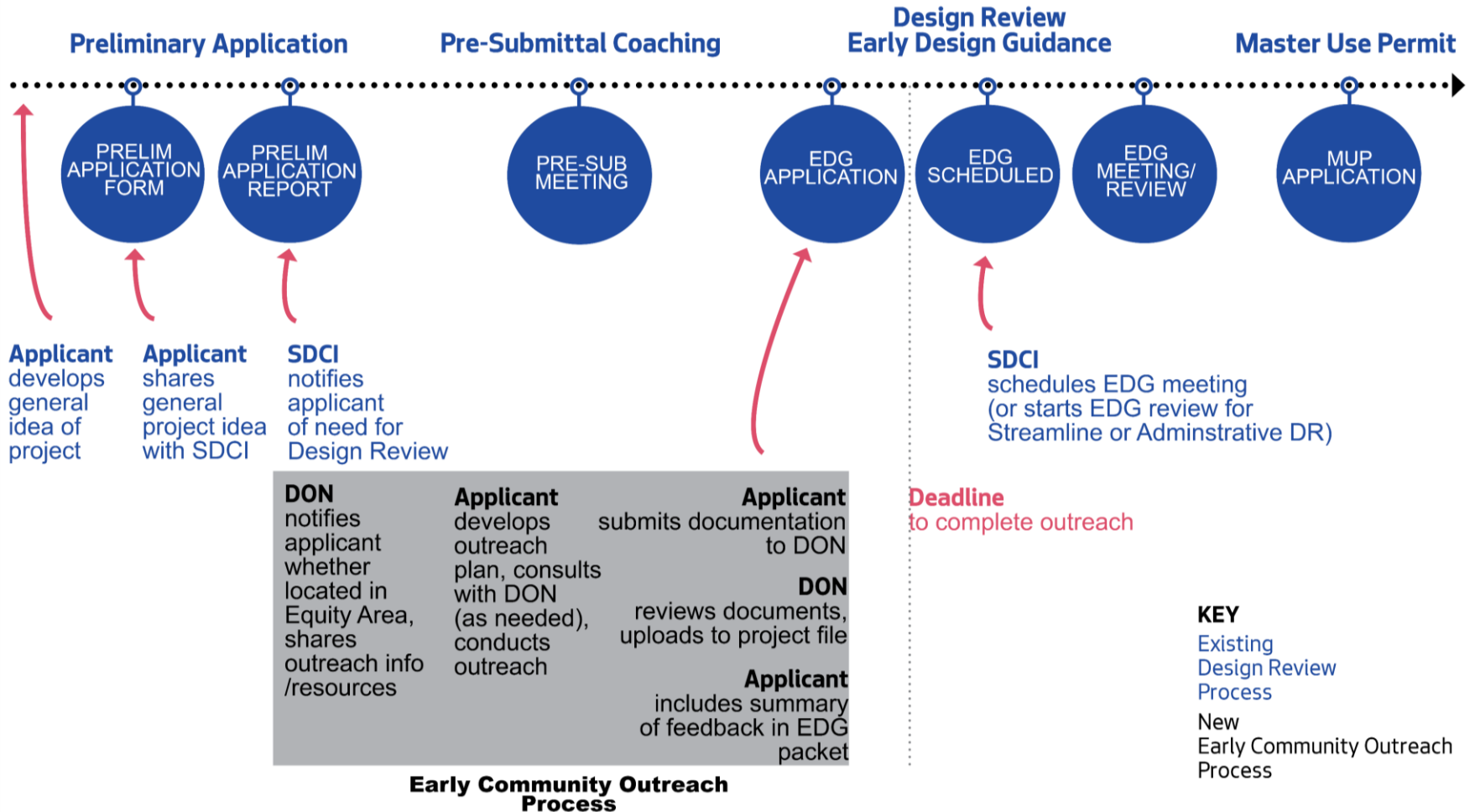
## Updates since August 2017

- Weighted outreach methods
- Clarifications
- Project info on DON blog, events on DON calendar
- Privacy and Public Records



# Early Community Outreach: Process

**DON staff must verify that the outreach has occurred before the applicant may schedule their EDG meeting**



# DON Website with Resources

Now online!

The screenshot shows the Seattle Department of Neighborhoods website. At the top, there is a blue navigation bar with the Seattle.gov logo, Mayor Jenny A. Durkan's name, a search bar, and a menu icon. Below the navigation bar, the page title is 'Seattle Department of Neighborhoods' with Andrés Mantilla, Interim Director, listed below it. The breadcrumb trail reads 'Home / Outreach and Engagement / Early Community Outreach for Design Review'. A secondary navigation bar includes 'Programs & Services', 'Community Resource Hub', 'Funding Opportunities', 'Event Calendar', and 'Outreach & Engagement'. A red banner below the navigation bar says 'Blog Early Community Outreach for Design Review'. The main content area features a colorful illustration of a city neighborhood with various buildings, trees, and a water body.

## What is Early Community Outreach for Design Review?

This new requirement is for developers to begin conversation with community members before project designs are complete. Here we provide guidance about the process along with resources to implement it.

The infographic is titled 'Early Community Outreach for Design Review: The Basics'. It is organized into a grid of boxes. 
 

- Requirements for Early Community Outreach:** COMING SOON: Finalized Rule to be posted Monday, June 11.
- What projects do early community outreach?** Find out if your project falls within the Design Review thresholds and needs to conduct early community outreach.
- Design Review Website:** All you need to know about Design Review at Seattle Department of Construction and Inspections (SDCI).
- Examples of Community Outreach Plans for Design Review:** COMING SOON: Not sure which outreach strategies to use? Pick one of these options.
- Frequently Asked Questions:** Coming Soon.
- What is an Equity Area?:** Find out how the City defines Equity Areas and see maps.
- Project Blog:** Find projects that are conducting early community outreach.
- Tell Us What You Think:** COMING SOON: Take a short survey to give us feedback on the early outreach program.
- Staff Contact:** DREarlyOutreach@seattle.gov

 On the right side of the infographic, there is a timeline diagram titled 'Design Review + Early Outreach Timeline' with the text 'COMING SOON'. The diagram shows a horizontal bar with a vertical line and a circular marker, indicating the timing of the outreach relative to the design review process.

The infographic is titled 'Planning Your Outreach and Engagement'. It features four main sections, each with an icon and a brief description:
 

- Spacefinder:** Find a convenient location for your event or meeting. (Icon: A house with a location pin.)
- Community Connector:** Find Community Organizations to foster meaningful outreach for your project. (Icon: Two hands shaking.)
- Early Outreach for Design Review Calendar:** Post your project related event or meeting on this public calendar. (Icon: A calendar page with the number 15.)
- Neighborhood Snapshots:** Find out more about the neighborhood where you are planning a project. (Icon: A colorful neighborhood scene with houses and trees.)

The infographic is titled 'Outreach and Engagement Tips & Resources'. It is organized into a grid of boxes providing various resources:
 

- Tips for Planning Successful Meetings:** Find out how to prepare for and plan your neighborhood meeting.
- Tips for Running Successful Meetings:** Read about important points to keep in mind while facilitating community meetings.
- Sample Meeting Agenda:** Try this sample meeting agenda.
- Sample Meeting Sign-in Sheet:** Don't have a sign-in sheet? Customize this pre-made template.
- Beginner's Guide to Social Media:** Read this guide on using social media and find the right platform(s) for your group.
- How to Make Documents Accessible:** Find tips on creating accessible Word and PDF documents.
- Interpreter and Translator Directory:** Search this online directory for a spoken language interpreter, American Sign Language interpreter, or translator.
- Strategies for Equitable Engagement:** Find out what equitable engagement means and learn ways to encourage diverse participation in your neighborhood group.
- Best practices for collecting information from the public:** Learn best practices for protecting your privacy and the privacy of community members who provide feedback on your [...]
- Survey Creation Tips for Developers:** COMING SOON
- Community Resource Hub:** Find more City resources and tools to help you connect and engage with community.



# DON Website: Basic Info

## Director's Rule

## Sample Community Outreach Plans

Use one of the six, or make up your own

## Overview of Outreach Process

## Project Blog

## FAQs

What is an equity area?

How do I submit documentation?

Evaluation Survey Coming Soon!

**Seattle Department of Neighborhoods**  
Andrea Mantilla, Interim Director  
Home Outreach and Engagement Early Community Outreach for Design Review  
Programs & Services Community Resource Hub Funding Opportunities Event Calendar Outreach & Engagement

### Early Community Outreach for Design Review

**What is Early Community Outreach for Design Review?**  
This new requirement is for developers to begin conversation with community members before project designs are complete. Here we provide guidance about the process along with resources to implement it.

#### Early Community Outreach for Design Review: The Basics

<b>Requirements for Early Community Outreach</b> COMING SOON: Finalize Rule to be posted Monday June 11.	<b>What projects do early community outreach?</b> Find out if your project falls within the Director's Rule and needs outreach. In contact early community outreach.	<b>Design Review + Early Outreach Timeline</b> COMING SOON
<b>Design Review Website</b> All you need to know about Design Review at Seattle Department of Construction and Inspections (DCI).	<b>Examples of Community Outreach Plans for Design Review</b> COMING SOON: Not done when outreach strategies to use PDC one of them either.	<b>Tell Us What You Think</b> COMING SOON: Take a short survey to give us feedback on the early outreach program.
<b>Frequently Asked Questions</b> Coming Soon	<b>What is an Equity Area?</b> Find out how the City defines Equity Area and see maps.	<b>Project Blog</b> Find projects that are conducting early community outreach.
<b>Staff Contact:</b> DRE@EarlyOutreach@seattle.gov		

#### Planning Your Outreach and Engagement

<b>Spousefinder</b> Find a convenient location for your event or meeting.	<b>Community Connector</b> Find Community Organizations to foster meaningful outreach for your project.	<b>Early Outreach for Design Review Calendar</b> Find your project related event or meeting on this public calendar.	<b>Neighborhood Snapshots</b> Find out more about the neighborhood where you are planning a project.
--	--	---	---

#### Outreach and Engagement Tips & Resources

<b>Tips for Planning Successful Meetings</b> Find out how to prepare for and plan your neighborhood meeting.	<b>Tips for Running Successful Meetings</b> Read about important points to keep in mind when facilitating community meetings.	<b>Sample Meeting Agenda</b> Try this sample meeting agenda.	<b>Sample Meeting Sign-in Sheet</b> Don't have a sign-in sheet? Customize this pre-made template.
<b>Beginner's Guide to Social Media</b> Read this guide on using social media and find the right platforms for your group.	<b>How to Make Documents Accessible</b> Find tips on creating accessible Word and PDF documents.	<b>Interpreter and Translator Directory</b> Search this online directory for a spoken language interpreter, American Sign Language interpreter, or translator.	<b>Strategies for Equitable Engagement</b> Find out what equitable engagement means and learn how to encourage diverse participation in your neighborhood group.
<b>Best practices for collecting information from the public</b> Learn best practices for promoting your agency and the efficacy of community meetings when providing feedback on your [...]	<b>Survey Creative Tips for Developers</b> COMING SOON	<b>Community Resource Hub</b> Find more City resources and tools to help you connect and engage with community.	

# Sample Outreach Plans

Use one of ours or design your own

**SAMPLE OUTREACH PLAN  
#3  
(Medium Apt Building Scenario)**

**MULTI-PRONGED METHODS:**

- Brief presentation at a local community organization's regular meeting (org is registered on DON's Community Connector or listed in DON's Neighborhood Snapshot and meeting is open to the general public)
- Drop-in hours at a local venue that is open to the public

**HIGH-IMPACT METHOD:**

- Online survey

**ALSO:**

- Project info is added to DON's Early Outreach Blog (by applicant) before all other outreach begins
- Both events are added to DON's "Early Outreach for Design Review" calendar (by applicant) seven days in advance

**HIGH-IMPACT METHOD:**

- Door to door fact-sheet (delivered to homes and businesses within a 500 ft radius at least seven days in advance of both in-person events, promotes the survey and in-person events)

**SCENARIO FOR SAMPLE PLAN #3  
(Medium Apartment Building)**

Crown Hill  
Approx. 50,000 ft / 40-50 apartments  
5 stories  
Corner of commercial arterial, bordering residential  
Mixed use, some live/work  
MFTE (affordable housing) component

**City of Seattle**

**EARLY COMMUNITY OUTREACH PLANS FOR DESIGN REVIEW**

This document is intended to provide guidance for development projects conducting early community outreach for design review, as required by Seattle Ordinance No. 220020 and prior DON Decision Rule 6.0103 / DON Decision Rule 1.0101. While the table contains the specific requirements for early community outreach, this document helps provide insight on how outreach could be planned and documented to meet the intent and requirements of the Rule.

June 2018

TABLE 1. SAMPLE OUTREACH PLANS	SAMPLE OUTREACH PLAN #1 (Townhome Scenario)	SAMPLE OUTREACH PLAN #2 (Small Apt Building Scenario)	SAMPLE OUTREACH PLAN #3 (Medium Apt Building Scenario)	SAMPLE OUTREACH PLAN #4 (Large Apt Building Scenario)	SAMPLE OUTREACH PLAN #5 (High-rise Scenario)	SAMPLE OUTREACH PLAN #6 (Affordable Housing Scenario)
<b>In-person Outreach</b>	<b>MULTI-PRONGED METHODS:</b> • Brief presentation at a local community organization's regular meeting (org is registered on DON's Community Connector or listed in DON's Neighborhood Snapshot and meeting is open to the general public) • Drop-in hours at a local venue (open to the general public)	<b>MULTI-PRONGED METHODS:</b> • Brief presentation at a local community organization's regular meeting (org is registered on DON's Community Connector or listed in DON's Neighborhood Snapshot) • Drop-in hours at a local venue (open to the general public)	<b>MULTI-PRONGED METHODS:</b> • Brief presentation at a local community organization's regular meeting (org is registered on DON's Community Connector or listed in DON's Neighborhood Snapshot and meeting is open to the general public) • Drop-in hours at a local venue that is open to the public	<b>MULTI-PRONGED METHODS:</b> • Brief presentation at a local community organization's regular meeting (org is registered on DON's Community Connector or listed in DON's Neighborhood Snapshot and meeting is open to the general public) • Drop-in hours at a local venue that is open to the public	<b>MULTI-PRONGED METHODS:</b> • Brief presentation at a local community organization's regular meeting (org is registered on DON's Community Connector or listed in DON's Neighborhood Snapshot and meeting is open to the general public) • Drop-in hours at a local venue (open to the general public)	<b>MULTI-PRONGED METHODS:</b> • Brief presentation at a local community organization's regular meeting (org is registered on DON's Community Connector or listed in DON's Neighborhood Snapshot and meeting is open to the general public) • Drop-in hours at a local venue (open to the general public)
<b>Digital Outreach</b>	<b>MULTI-PRONGED METHODS:</b> • Basic project webpage • Project fact-sheet with information about project and residential context (if applicable) • Project info added to DON's Early Outreach Blog (by applicant) before all other outreach begins • Project fact-sheet added to DON's "Early Outreach for Design Review" calendar (by applicant) seven days in advance	<b>MULTI-PRONGED METHODS:</b> • Basic project webpage • Project fact-sheet with information about project and residential context (if applicable) • Project info added to DON's Early Outreach Blog (by applicant) before all other outreach begins • Project fact-sheet added to DON's "Early Outreach for Design Review" calendar (by applicant) seven days in advance	<b>MULTI-PRONGED METHODS:</b> • Basic project webpage • Project fact-sheet with information about project and residential context (if applicable) • Project info added to DON's Early Outreach Blog (by applicant) before all other outreach begins • Project fact-sheet added to DON's "Early Outreach for Design Review" calendar (by applicant) seven days in advance	<b>MULTI-PRONGED METHODS:</b> • Basic project webpage • Project fact-sheet with information about project and residential context (if applicable) • Project info added to DON's Early Outreach Blog (by applicant) before all other outreach begins • Project fact-sheet added to DON's "Early Outreach for Design Review" calendar (by applicant) seven days in advance	<b>MULTI-PRONGED METHODS:</b> • Basic project webpage • Project fact-sheet with information about project and residential context (if applicable) • Project info added to DON's Early Outreach Blog (by applicant) before all other outreach begins • Project fact-sheet added to DON's "Early Outreach for Design Review" calendar (by applicant) seven days in advance	<b>MULTI-PRONGED METHODS:</b> • Basic project webpage • Project fact-sheet with information about project and residential context (if applicable) • Project info added to DON's Early Outreach Blog (by applicant) before all other outreach begins • Project fact-sheet added to DON's "Early Outreach for Design Review" calendar (by applicant) seven days in advance
<b>Printed Outreach</b>	<b>MULTI-PRONGED METHODS:</b> • Door to door fact-sheet (delivered to homes and businesses within a 500 ft radius at least seven days in advance of both in-person events, promotes the project webpage, project fact-sheet, and drop-in hours)	<b>MULTI-PRONGED METHODS:</b> • Door to door fact-sheet (delivered to homes and businesses within a 500 ft radius at least seven days in advance of both in-person events, promotes the project webpage, project fact-sheet, and drop-in hours)	<b>MULTI-PRONGED METHODS:</b> • Door to door fact-sheet (delivered to homes and businesses within a 500 ft radius at least seven days in advance of both in-person events, promotes the project webpage, project fact-sheet, and drop-in hours)	<b>MULTI-PRONGED METHODS:</b> • Door to door fact-sheet (delivered to homes and businesses within a 500 ft radius at least seven days in advance of both in-person events, promotes the project webpage, project fact-sheet, and drop-in hours)	<b>MULTI-PRONGED METHODS:</b> • Door to door fact-sheet (delivered to homes and businesses within a 500 ft radius at least seven days in advance of both in-person events, promotes the project webpage, project fact-sheet, and drop-in hours)	<b>MULTI-PRONGED METHODS:</b> • Door to door fact-sheet (delivered to homes and businesses within a 500 ft radius at least seven days in advance of both in-person events, promotes the project webpage, project fact-sheet, and drop-in hours)

Available online

# DON Website: Planning Resources

## Neighborhood Snapshots

Demographics, meeting rooms, community groups, local plans/initiatives

## Community Connector

Find local community organizations

## Early Outreach Event Calendar

Post public in-person events here

## Spacefinder

Find meeting rooms

The screenshot shows the Seattle Department of Neighborhoods website. The header includes the city logo and navigation links. The main content area is titled "Early Community Outreach for Design Review" and features a colorful map of Seattle. Below the map, there is a section titled "What is Early Community Outreach for Design Review?" followed by a grid of resources. The grid includes sections for "Requirements for Early Community Outreach", "Design Review Website", "Frequently Asked Questions", "Staff Contact", "What projects do early community outreach?", "Examples of Community Outreach Plans for Design Review", "What is an Equity Area?", "Project Blog", "Tell Us What You Think", "Planning Your Outreach and Engagement", and "Outreach and Engagement Tips & Resources".

Early Community Outreach for Design Review: The Basics			
<b>Requirements for Early Community Outreach</b> COMING SOON: Finalize Rule to be posted Monday June 11. Find out if your project falls within the Design Review thresholds and needs to conduct early community outreach.	<b>What projects do early community outreach?</b> Find out if your project falls within the Design Review thresholds and needs to conduct early community outreach.	<b>Design Review + Early Outreach Timeline</b> COMING SOON A timeline diagram showing the sequence of events from project start to final design review.	
<b>Design Review Website</b> All you need to know about Design Review at Seattle Department of Construction and Inspections (DCI). COMING SOON: Not sure when outreach strategies to use? Pick one of these options.	<b>Examples of Community Outreach Plans for Design Review</b> COMING SOON: Not sure when outreach strategies to use? Pick one of these options.	<b>Project Blog</b> Find projects that are conducting early community outreach.	<b>Tell Us What You Think</b> COMING SOON: Take a short survey to give us feedback about the early outreach program.
<b>Frequently Asked Questions</b> Coming Soon	<b>What is an Equity Area?</b> Find out how the City defines Equity Areas and see maps.		
<b>Staff Contact:</b> DR@earlyoutreach@seattle.gov			

Planning Your Outreach and Engagement			
<b>Spacefinder</b> Find a convenient location for your event or meeting.	<b>Community Connector</b> Find Community Organizations to foster meaningful outreach for your project.	<b>Early Outreach for Design Review Calendar</b> Find your project related event or meeting on this public calendar.	<b>Neighborhood Snapshots</b> Find out more about the neighborhood where you are planning a project.

Outreach and Engagement Tips & Resources			
<b>Tips for Planning Successful Meetings</b> Find out how to prepare for and plan your neighborhood meeting.	<b>Tips for Running Successful Meetings</b> Read about important points to keep in mind when facilitating community meetings.	<b>Sample Meeting Agenda</b> Try this sample meeting agenda.	<b>Sample Meeting Sign-in Sheet</b> Don't have a sign-in sheet? Customize this pre-made template.
<b>Beginner's Guide to Social Media</b> Read this guide on using social media and find the right platforms for your group.	<b>How to Make Documents Accessible</b> Find tips on creating accessible Word and PDF documents.	<b>Interpreter and Translator Directory</b> Search this online directory for a spoken language interpreter, American Sign Language interpreter, or translator.	<b>Strategies for Equitable Engagement</b> Find out what equitable engagement means and learn how to encourage diverse participation in your neighborhood group.
<b>Best practices for collecting information from the public</b> Learn best practices for promoting your agency and the priority of community members who provide feedback on your [...]	<b>Survey Creative Tips for Developers</b> COMING SOON	<b>Community Resource Hub</b> Find more City resources and tools to help you connect and engage with community.	

# Neighborhood Snapshot

# Community Connector

### PEOPLE

**RACE/ETHNICITY:**

**LANGUAGES:** For translation & interpretation, DON can help identify recommended languages.

**23** Total Languages Spoken

Commonly spoken:  
Vietnamese / African Languages

### NEIGHBORHOOD NUMBERS

**COLUMBIA CITY**  
UPDATED 5/2018

Columbia City		Citywide	
Renter households	% 50	53	
People under 18 years of age	% 19.2	15	
People age 65 and over	% 12.6	11	
Persons of color	% 68	33	
Language other than English spoken at home	% 42.5	22	
High school or higher	% 80.7	93	
Bachelor's degree or higher	% 35	57	
Median household income	\$ 52,746	65,277	
Unemployed	% 11.3	7	
Population below poverty level	17.3	14	

Source: 2009-2013 American Community Survey

### LEARN MORE

**Local Blogs + News**

- [southseattlemerald.com](#)
- [seattlefacts.com](#)
- [seattleinsider.com](#)
- [kvr.com](#)
- Ethnic Media: [seattle.gov/indaffairs/EMF](#)

**Didn't capture it?**  
Contact the Department of Neighborhoods at [NeighborhoodSnapshot@seattle.gov](mailto:NeighborhoodSnapshot@seattle.gov) or call 206.615.0856

**More Resources**  
For a document with live web links, visit <http://www.seattle.gov/neighborhoods/triangles/hoods-and-divers>

### Seattle Department of Neighborhoods

Kathy Nyland, Director  
Home | Connect to Community

Search results ( 7 total ) Map View  SEARCH + ADD YOUR GROUP

#### Capitol Hill Champion

**Organization Website:** <http://capitolhillchampion.org/>  
**Interests and Communities we serve:** Transit, Capitol Hill  
**Organization can serve as a fiscal sponsor for others:** No

**Organization mission:**  
The Capitol Hill Champion, a joint project of the Capitol Hill Community Council and the Capitol Hill Chamber of Commerce, advocates for the incorporation of community goals into the redevelopment on top of Sound Transit's Link Rail Capitol Hill Station.

[Twitter](#) [Facebook](#)

#### Capitol Hill Chamber of Commerce

**Organization Website:** <https://www.caphillchamber.org/>  
**Address:** 1620 12th Avenue, Suite 208, Seattle, WA 98122  
**Interests and Communities we serve:** Economic Development, Business Development, small business, Capitol Hill  
**Organization can serve as a fiscal sponsor for others:** Yes

**Organization mission:**  
We are committed to supporting an economically vital, livable community and promoting Capitol Hill as a unique urban neighborhood that is welcoming to everyone.

[Twitter](#) [Facebook](#)

#### Sustainable Capitol Hill

**Organization Website:** <https://sustainablecapitolhill.org/>  
**Address:** 1552 Crawford Place, Seattle, wa 98122  
**Interests and Communities we serve:** Capitol Hill, Tool Library  
**Organization can serve as a fiscal sponsor for others:** No

**Organization mission:**  
Sustainable Capitol Hill is a network of neighbors, businesses and community groups dedicated to making Capitol Hill a sustainable community. We are working to create a vital neighborhood – one with strong connections between people, place and the local ecosystem.

[Twitter](#) [Facebook](#) [Instagram](#)

#### Capitol Hill Community Council

**Organization Website:** <http://capitolhillcommunitycouncil.org/>  
**Address:** P.O. Box 20641, Seattle, WA 98102

**Organization mission:**  
The Capitol Hill Community Council (CHCC) shall...

# DON Website: Tips & Resources

## Tips and Templates for Meetings

## Interpreter & Translator Directory

## Strategies for Equitable Engagement

## Best Practices for collecting information from the public

**Seattle Department of Neighborhoods**  
Andrés Marañón, Interim Director  
Home Outreach and Engagement Early Community Outreach for Design Review  
Programs & Services Community Resource Hub Funding Opportunities Event Calendar Outreach & Engagement

### Early Community Outreach for Design Review

**What is Early Community Outreach for Design Review?**  
This new requirement is for developers to begin conversation with community members before project designs are complete. Here we provide guidance about the process along with resources to implement it.

#### Early Community Outreach for Design Review: The Basics

<b>Requirements for Early Community Outreach</b> COMING SOON: Finalize Rule to be posted Monday June 11. Find out if you project falls within the Design Review thresholds and needs to conduct early community outreach.	<b>What projects do early community outreach?</b> Find out if you project falls within the Design Review thresholds and needs to conduct early community outreach.	<b>Design Review + Early Outreach Timeline</b> COMING SOON: Take a short survey to give us feedback about the early outreach program.
<b>Design Review Website</b> All you need to know about Design Review at Seattle Department of Construction and Inspections (DCI). COMING SOON: Not sure which outreach strategies to use? Pick one of these options.	<b>Examples of Community Outreach Plans for Design Review</b> COMING SOON: Not sure which outreach strategies to use? Pick one of these options.	<b>Project Blog</b> Find projects that are conducting early community outreach.
<b>Frequently Asked Questions</b> Coming Soon	<b>What is an Equity Area?</b> Find out how the City defines Equity Areas and see maps.	<b>Tell Us What You Think</b> COMING SOON: Take a short survey to give us feedback about the early outreach program.
<b>Staff Contact:</b> DRE@earlyoutreach@seattle.gov		

#### Planning Your Outreach and Engagement

<b>Spousefinder</b> Find a convenient location for your event or meeting.	<b>Community Connector</b> Find Community Organizations to foster meaningful outreach for your project.	<b>Early Outreach for Design Review Calendar</b> Find your project related event or meeting on this public calendar.	<b>Neighborhood Snapshots</b> Find out more about the neighborhood where you are planning a project.
--	--	---	---

#### Outreach and Engagement Tips & Resources

<b>Tips for Planning Successful Meetings</b> Find out how to prepare for and plan your neighborhood meeting.	<b>Tips for Running Successful Meetings</b> Read about important points to keep in mind when facilitating community meetings.	<b>Sample Meeting Agenda</b> Try this sample meeting agenda.	<b>Sample Meeting Sign-in Sheet</b> Don't have a sign-in sheet? Customize this pre-made template.
<b>Beginner's Guide to Social Media</b> Read this guide on using social media and find the right platforms for your group.	<b>How to Make Documents Accessible</b> Find tips on creating accessible Word and PDF documents.	<b>Interpreter and Translator Directory</b> Search the online directory for a spoken language interpreter, American Sign Language interpreter, or translator.	<b>Strategies for Equitable Engagement</b> Find out what equitable engagement means and learn how to encourage diverse participation in your neighborhood map.
<b>Best practices for collecting information from the public</b> Learn best practices for promoting your agency and the priority of community members who provide feedback on your [...]	<b>Survey Creation Tips for Developers</b> COMING SOON	<b>Community Resource Hub</b> Find more City resources and tools to help you connect and engage with community.	

# More Information

---

## Info Sessions for Developers

- Today, June 20, 4pm  
Seattle Municipal Tower (SMT) 19<sup>th</sup> Floor

## Reddit “Ask Me Anything” Sessions

- July 10, 12-1pm
- August 14, 8-9am

# Questions

---

Lisa Rutzick, SDCI

Design Review Program Manager

Lisa.Rutzick@seattle.gov

Danielle Friedman, DON

DREarlyOutreach@seattle.gov

[www.seattle.gov/neighborhoods/outreach-and-engagement/  
design-review-for-early-outreach](http://www.seattle.gov/neighborhoods/outreach-and-engagement/design-review-for-early-outreach)

