

Incorporating Equity into Regional Growth

April 26, 2019



Puget Sound Regional Council

Puget Sound Regional Council (PSRC)

Regional planning agency

Develops policies and coordinates decision about regional growth, transportation, and economic development planning

Composed of over 80 jurisdictions:

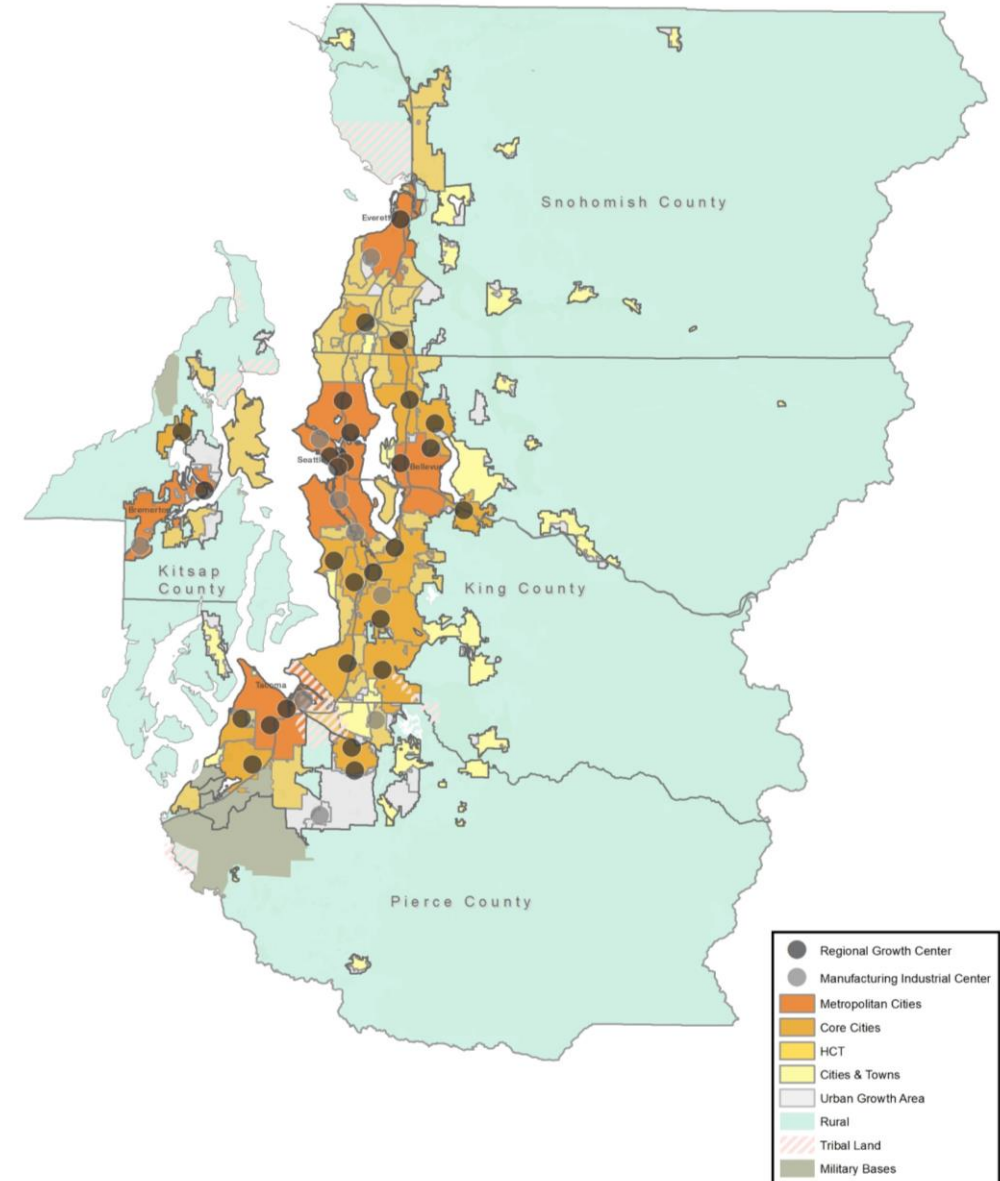
4 counties, 82 cities and towns, ports, state and local transportation agencies, tribal governments

Develop regional plans

VISION 2050

Regional Transportation Plan

Regional Economic Strategy



Member Direction on Equity

VISION 2050 Scoping

- Define equity
- Assess policy through an equity lens
- Develop strategies to mitigate disparities and reduce displacement

Work sessions with members and stakeholders

- Incorporate equity into vision statement
- Provide local jurisdictions with tools
- Engage underrepresented groups



PSRC Equity Work Program

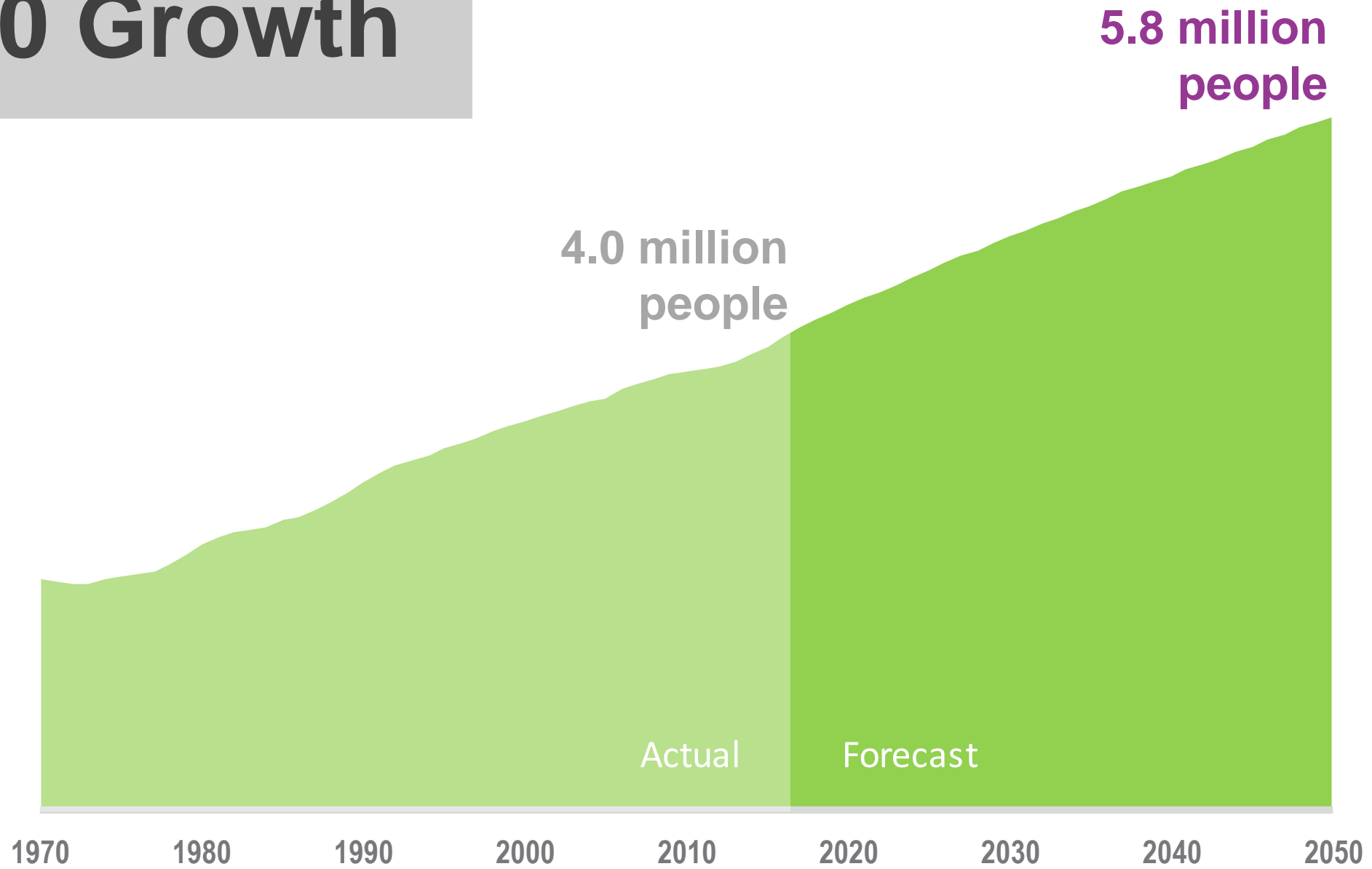
To define equity and have a common understanding among members

Center equity in VISION 2050 and other regional plans

Develop and distribute data and tools



2050 Growth



Source: PSRC



2050 Growth

In 2050, the region's residents will be:

Older



18% of the region's population will be over the age of 65 by 2050, up from 14% today.

More diverse



Between 2000 and 2016, 81% of the region's population growth was people of color.

In smaller households



In 2050 there will be 2.36 people per household on average, down from 2.50 today.



Region's Demographics

People of color represent:

24% of region's population in 2000

35% of region's population in 2016

81% of region's growth since 2000

Cities at or near 50%+ people of color in 2017:

SeaTac (68%)

Federal Way (52%)

Des Moines (47%)

Tukwila (67%)

Burien (50%)

Lynnwood (45%)

Kent (54%)

Lakewood (49%)

Pacific (44%)

Renton (54%)

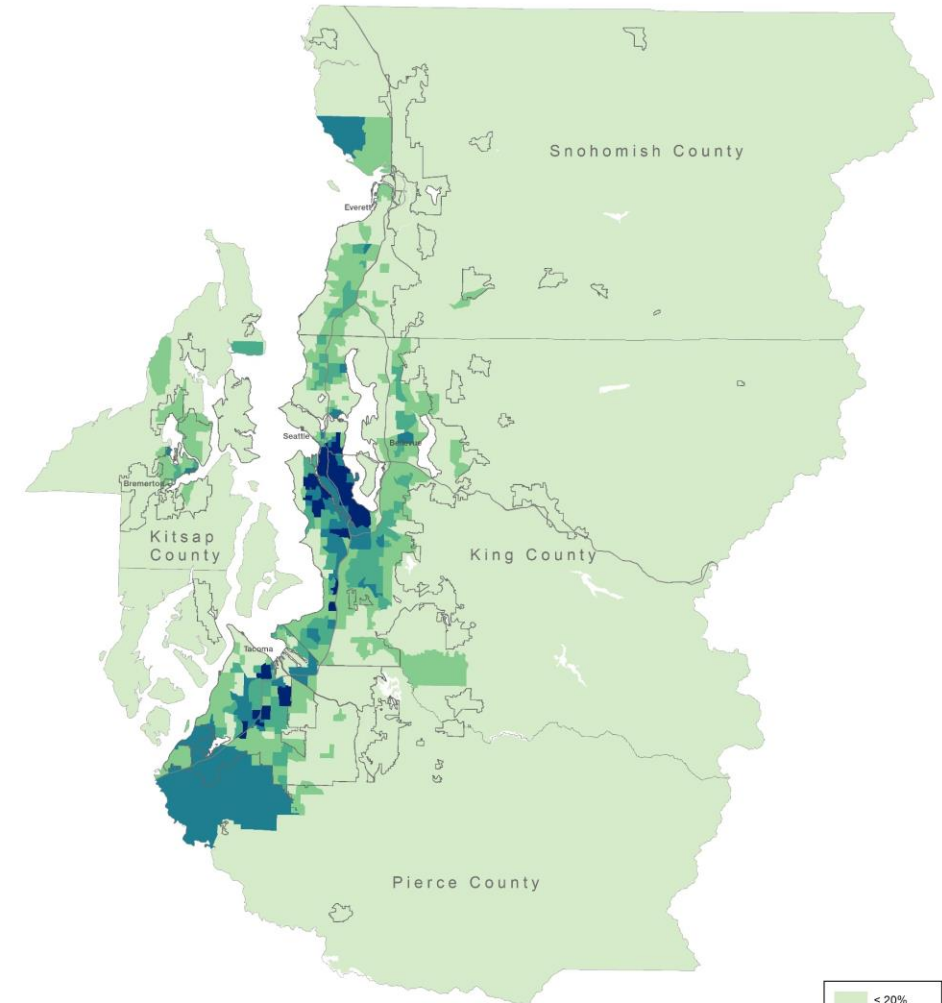
Bellevue (49%)

Auburn (41%)

Fife (54%)

Redmond (47%)

Tacoma (40%)



2000

Source: American Community Survey, 5-year estimates



Region's Demographics

People of color represent:

24% of region's population in 2000

35% of region's population in 2016

81% of region's growth since 2000

Cities at or near 50%+ people of color in 2017:

SeaTac (68%)

Federal Way (52%)

Des Moines (47%)

Tukwila (67%)

Burien (50%)

Lynnwood (45%)

Kent (54%)

Lakewood (49%)

Pacific (44%)

Renton (54%)

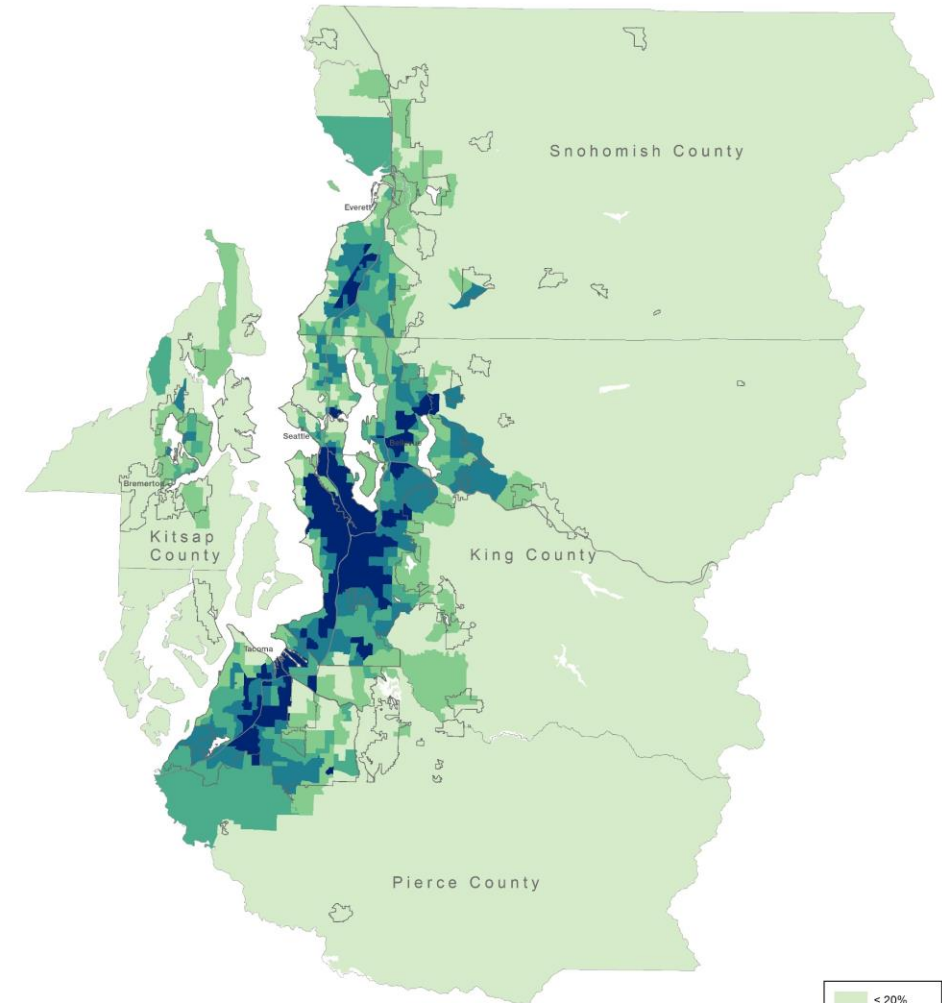
Bellevue (49%)

Auburn (41%)

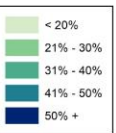
Fife (54%)

Redmond (47%)

Tacoma (40%)



2016



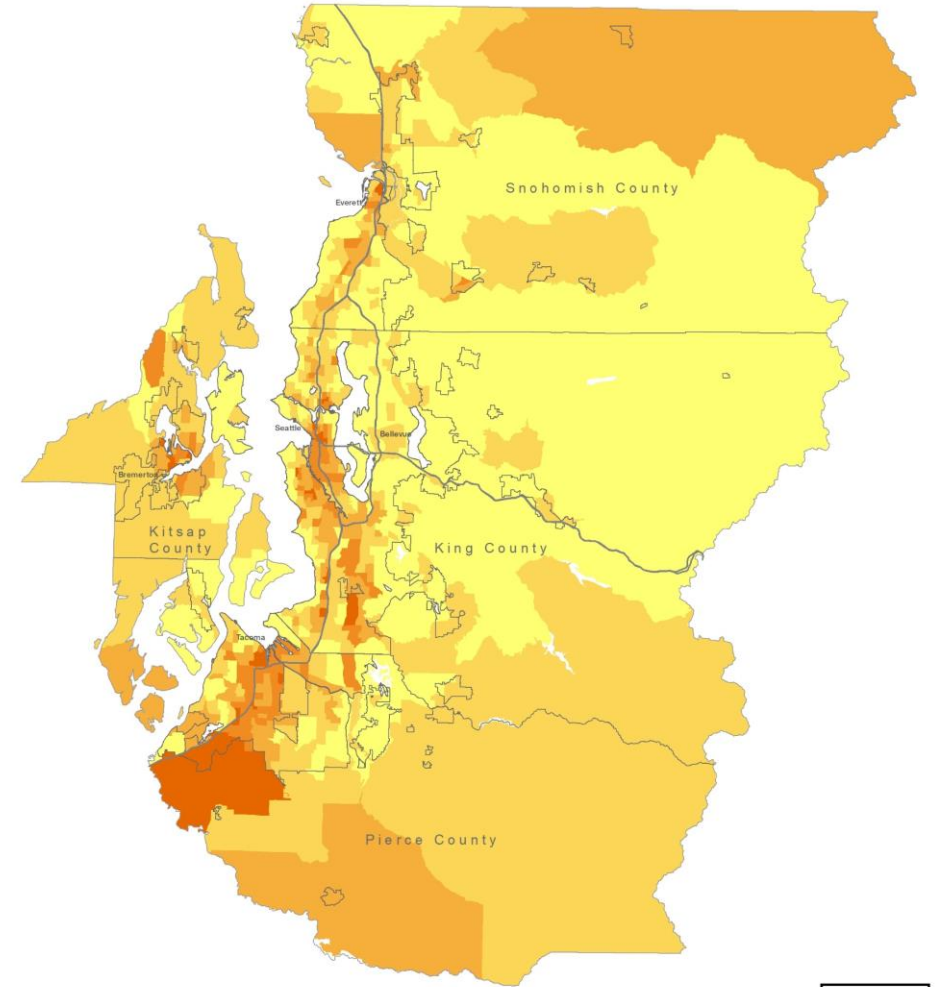
Source: American Community Survey, 5-year estimates

Region's Demographics

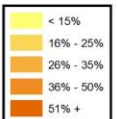
Low-Income population includes households with incomes less than 200% of the federal poverty level:

21% of region's population in 2000

24% of region's population in 2016



2000



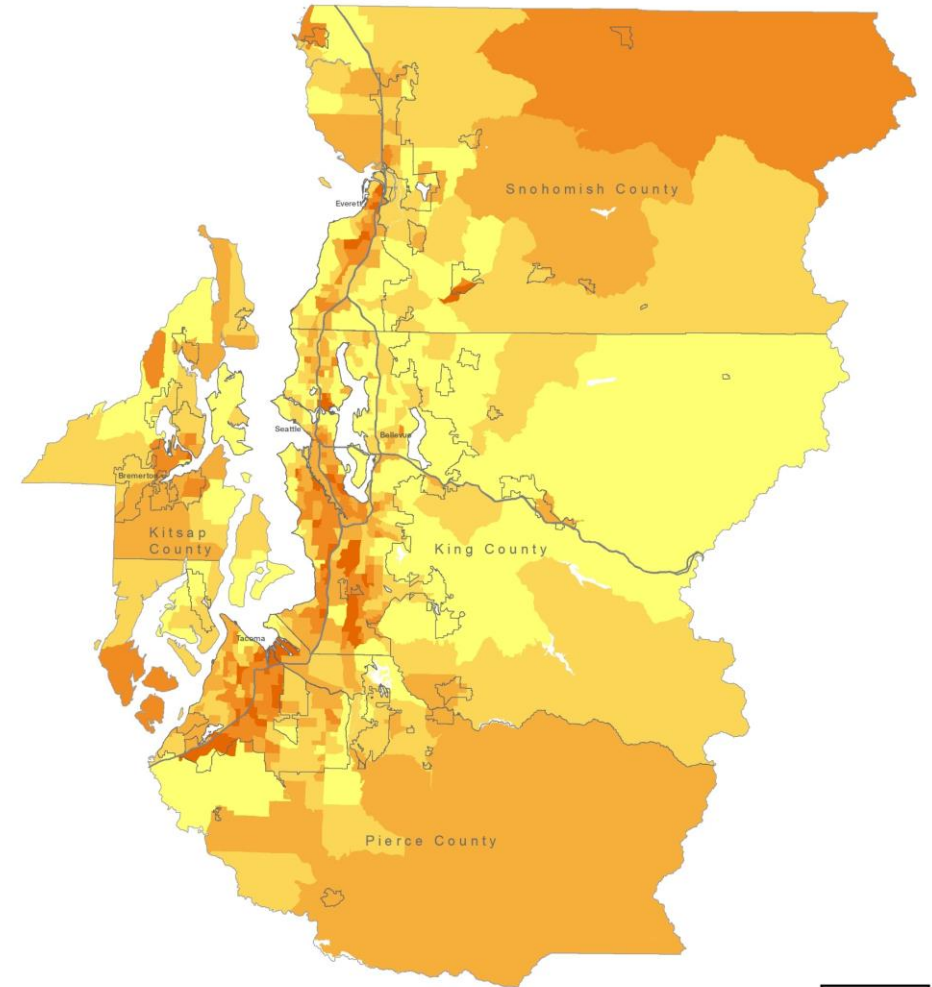
Source: American Community Survey, 5-year estimates

Region's Demographics

Low-Income population includes households with incomes less than 200% of the federal poverty level:

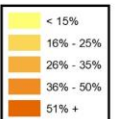
21% of region's population in 2000

24% of region's population in 2016



2016

Source: American Community Survey, 5-year estimates



VISION 2050 Draft Supplemental EIS

Evaluates environmental effects

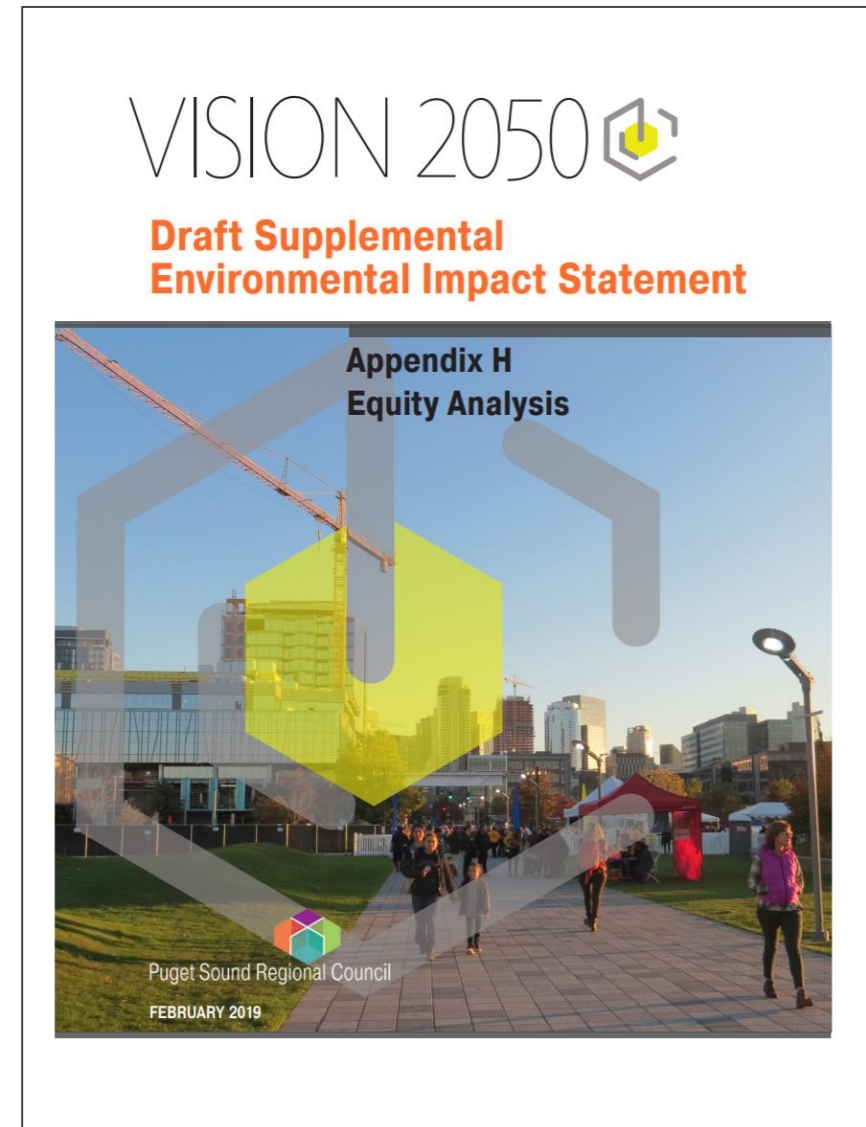
Three regional growth alternatives that distribute growth in unique patterns throughout the region

Appendix H: Equity Analysis

Demographic information, measures impacts on specific geographies

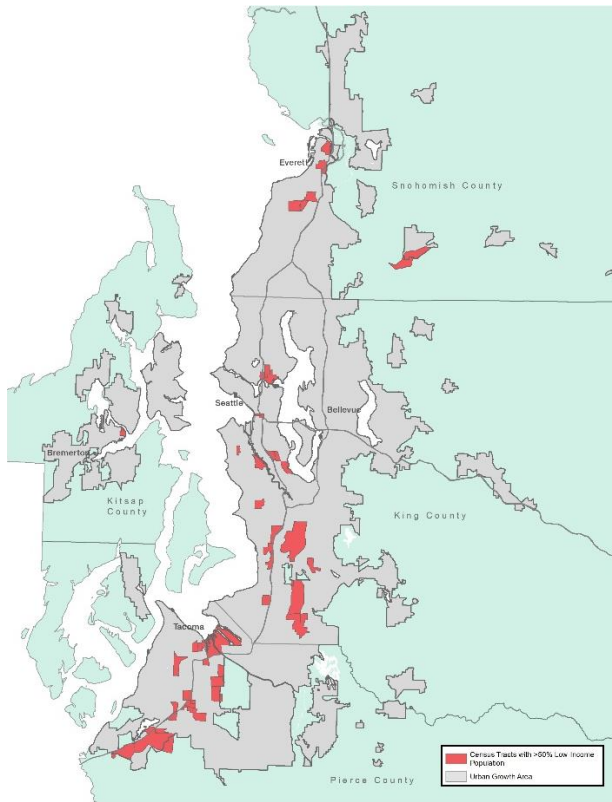
Uses tools to analyze growth outcomes

Updated opportunity mapping, displacement risk analysis

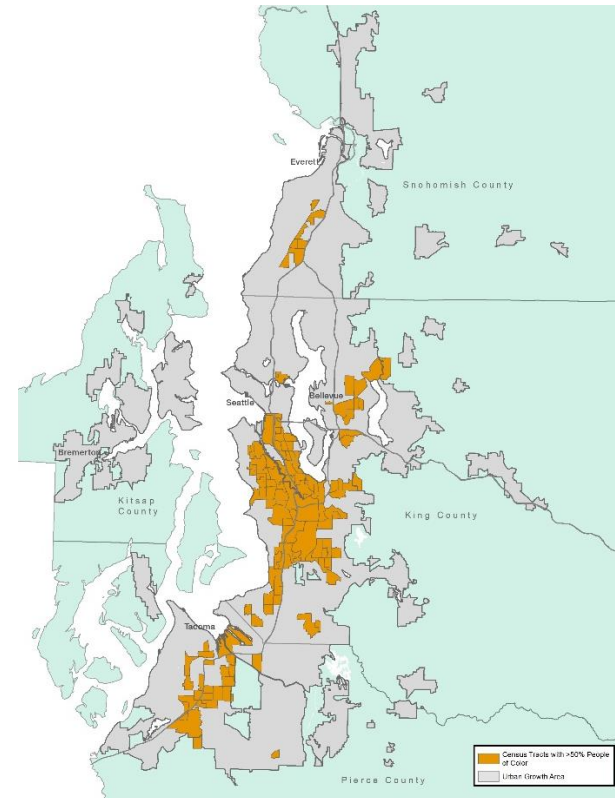


VISION 2050 Draft Supplemental EIS

Measures impact in areas with high concentrations of low income residents and people of color



Over 50% Low Income

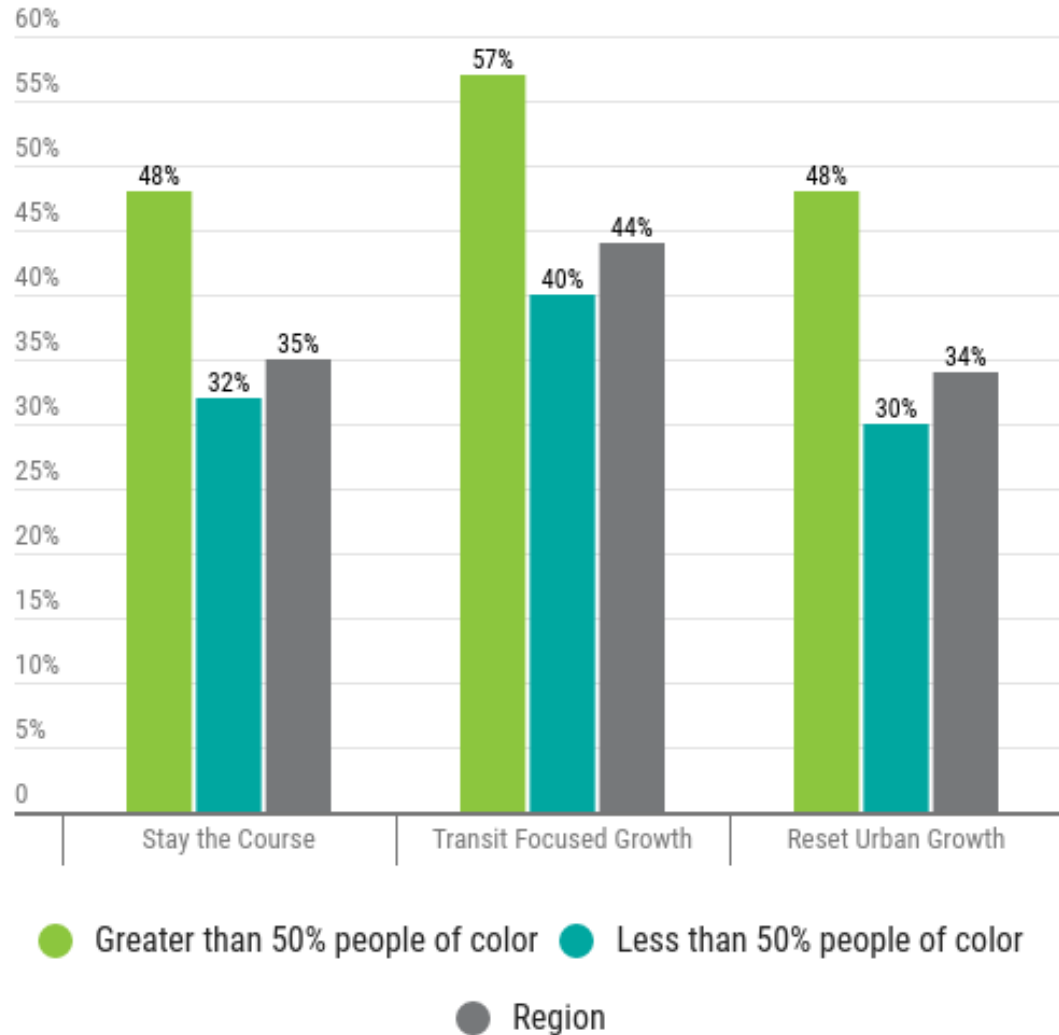


Over 50% People of Color

Source: PSRC

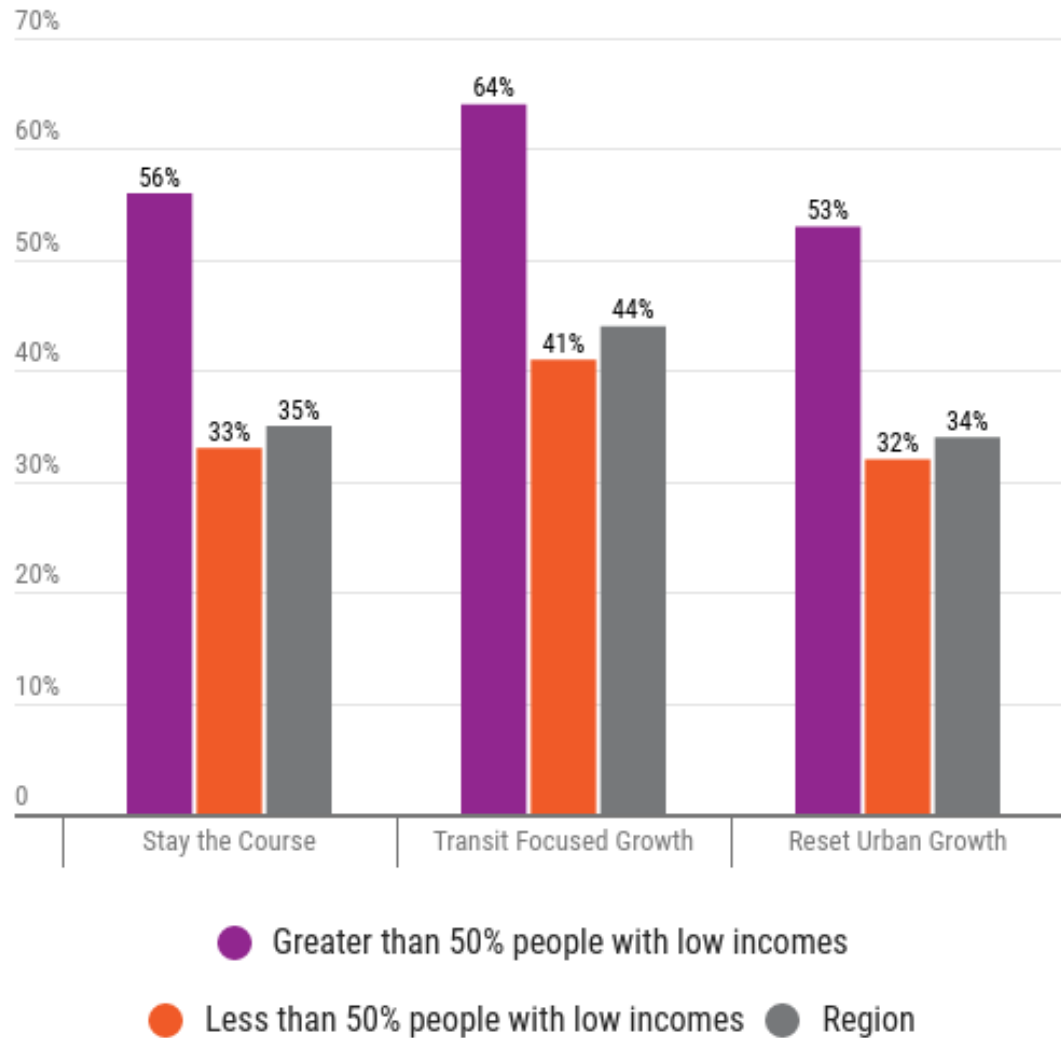


VISION 2050 Draft Supplemental EIS



Population and Employment in Proximity to High-Capacity Transit, 2050, Low Income Population

VISION 2050 Draft Supplemental EIS



Population and Employment in Proximity to High-Capacity Transit, 2050, Low Income Population

Source: PSRC



Opportunity Mapping

Uses an “Opportunity index” based on measures of neighborhood opportunity and positive life outcomes:

Education

- English test scores
- Math test score
- Student poverty
- Teacher qualifications
- Graduate rates

Economic health

- Living wage jobs
- Job growth trends
- Unemployment rates

Housing & neighborhood quality

- Housing vacancy rates
- Housing conditions
- Crime Index

Mobility & transportation

- Drive commute costs
- Access to transit
- Average transit costs
- Walk commutes

Health & environment

- Proximity to parks
- Toxic waste
- Access to healthy food



Opportunity Mapping

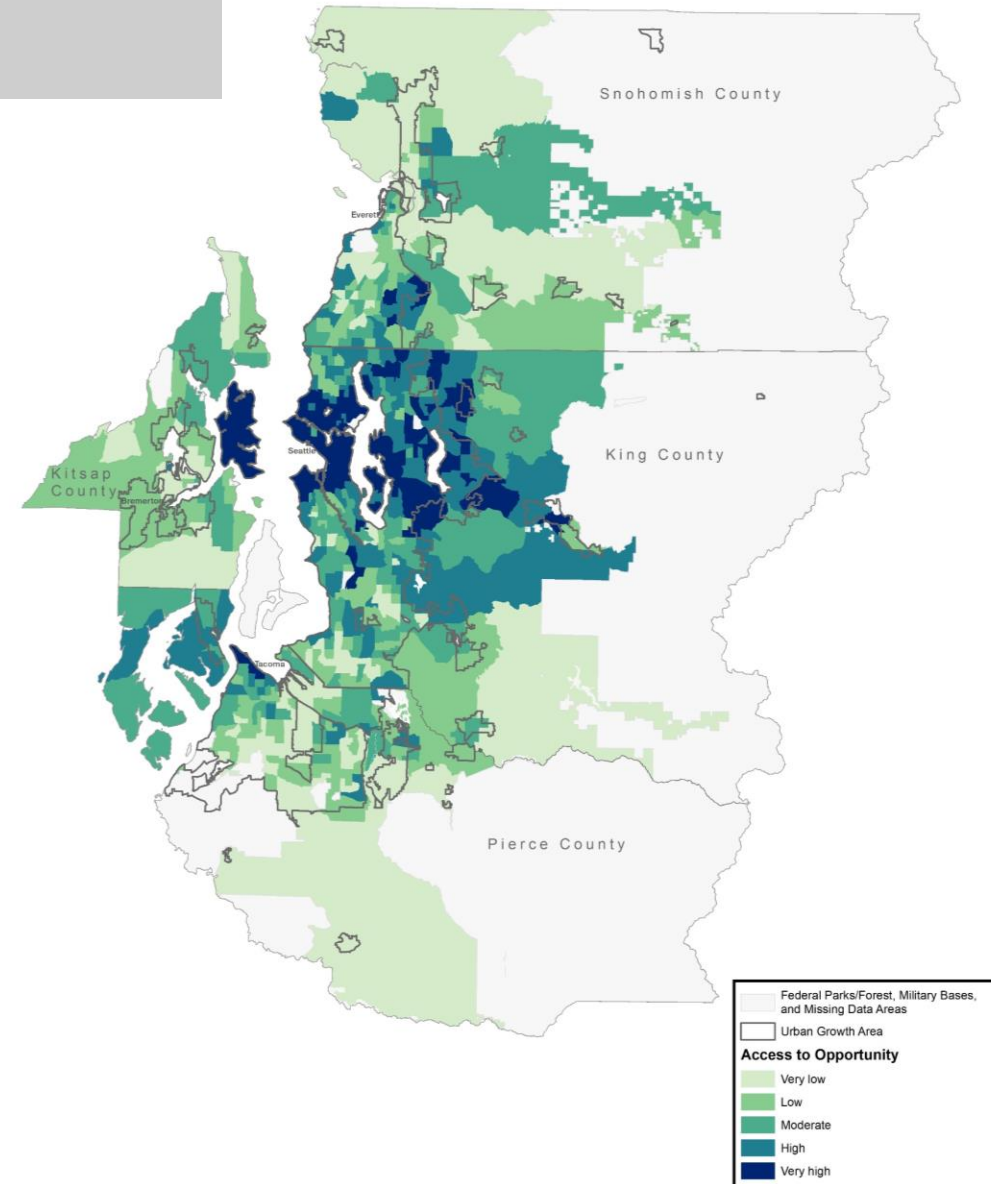
Applications of tool:

Analysis of growth in VISION 2050 Draft Supplemental EIS

Regional policy development in VISION 2050

Project selection criterion for the distribution of PSRC's transportation funding

Technical assistance for local jurisdictions



Displacement Risk Analysis

Identifies areas at greater risk of displacement based on current neighborhood conditions:

Socio-demographics

- Race/ethnicity
- English proficiency
- Education attainment
- Renter households
- Housing cost-burden households
- Low-income households

Transportation qualities

- Access to jobs by auto
- Access to jobs by transit
- Proximity to existing transit
- Proximity to planned transit

Neighborhood characteristics

- Proximity to supermarkets, pharmacists, restaurants
- Proximity to schools, parks
- Proximity to high-income areas

Housing

- Development capacity
- Median rent

Civic engagement

- Voter turnout



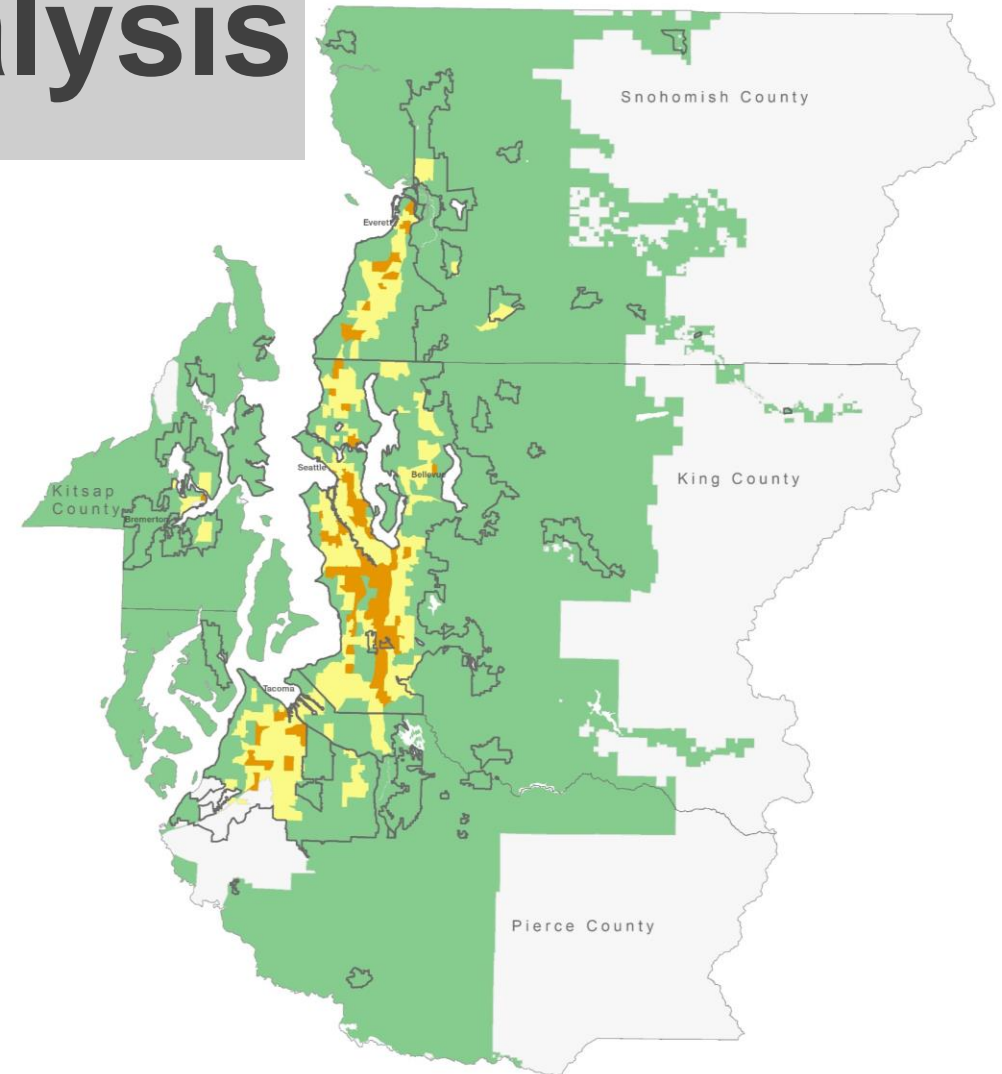
Displacement Risk Analysis

Applications of tool:

Analysis of growth in VISION 2050 Draft Supplemental EIS

Regional policy development in VISION 2050

Technical assistance for local jurisdictions



Displacement Risk
Lower
Moderate
Higher

Draft Policies in VISION 2050

MPP-Development Patterns

Evaluate planning in regional growth centers and high capacity transit station areas for their **potential physical, economic, and cultural displacement** of marginalized residents and businesses.

MPP-Development Patterns

Engage in equitable community planning to identify the diverse needs of the region's communities and achieve growth outcomes

MPP-Transportation

Implement transportation programs and projects that **provide access to opportunities while preventing or mitigating negative impacts** to people of color, people with low-income, and people with special transportation needs.



Institutionalizing Equity at PSRC

Regional plans and policies

New Equity Manager Position

Members of the Government Alliance on Race and Equity (GARE)

NW Learning Cohort

- Participation in curriculum focuses on strategies to achieve racial equity through operationalizing new policies and culture
- Other participants in our region include: King County, Lynnwood, Port of Seattle, City of Seattle, Seattle Housing Authority, City of Tacoma, City of Tukwila



Discussion

Feedback or suggestions on this work at PSRC?

What would be helpful for you from PSRC?



Thank you.



More information: psrc.org/equity

Ben Bakkenta

Director of Regional Planning
bbakkenta@psrc.org

Brian Lee

Principal Planner, Data
blee@psrc.org

Maggie Moore

Associate Planner, Regional Planning
mmoore@psrc.org