

West Ewing Mini Park Partial Transfer of Jurisdiction (PTOJ)

Partial Transfer of Underground Utilities from
Seattle Parks and Recreation to Seattle Public Utilities

Civic Development, Public Assets and Native Communities Committee

March 20, 2019

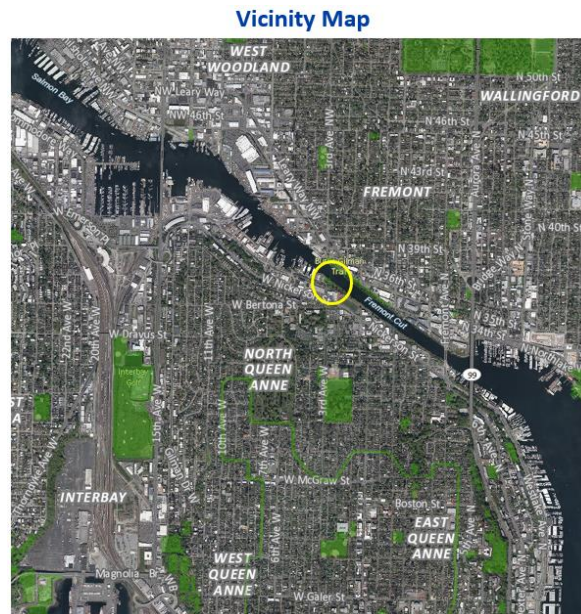
Seattle Parks and Recreation



City of Seattle

Background

- West Ewing Mini Park (W Ewing St. & 3rd Ave. W) consists of three portions under three different City departments' jurisdictions: Seattle Parks and Recreation (SPR), Seattle Department of Transportation (SDOT) and Seattle Public Utilities (SPU).
- SPU acquired the first portion in 1911 for sewer purposes. SPR agreed to maintain it as a park in 1971. SPR agreed to maintain the SDOT portion in 1984. The SPR portion was deeded to the City by Seattle Pacific University in 1995.

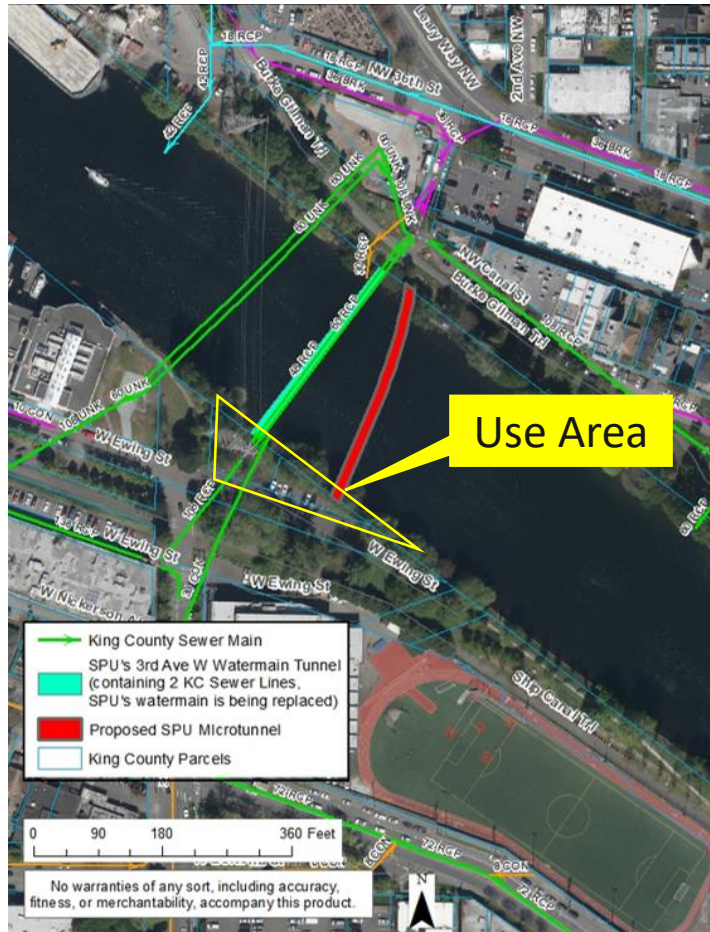


SPU Project

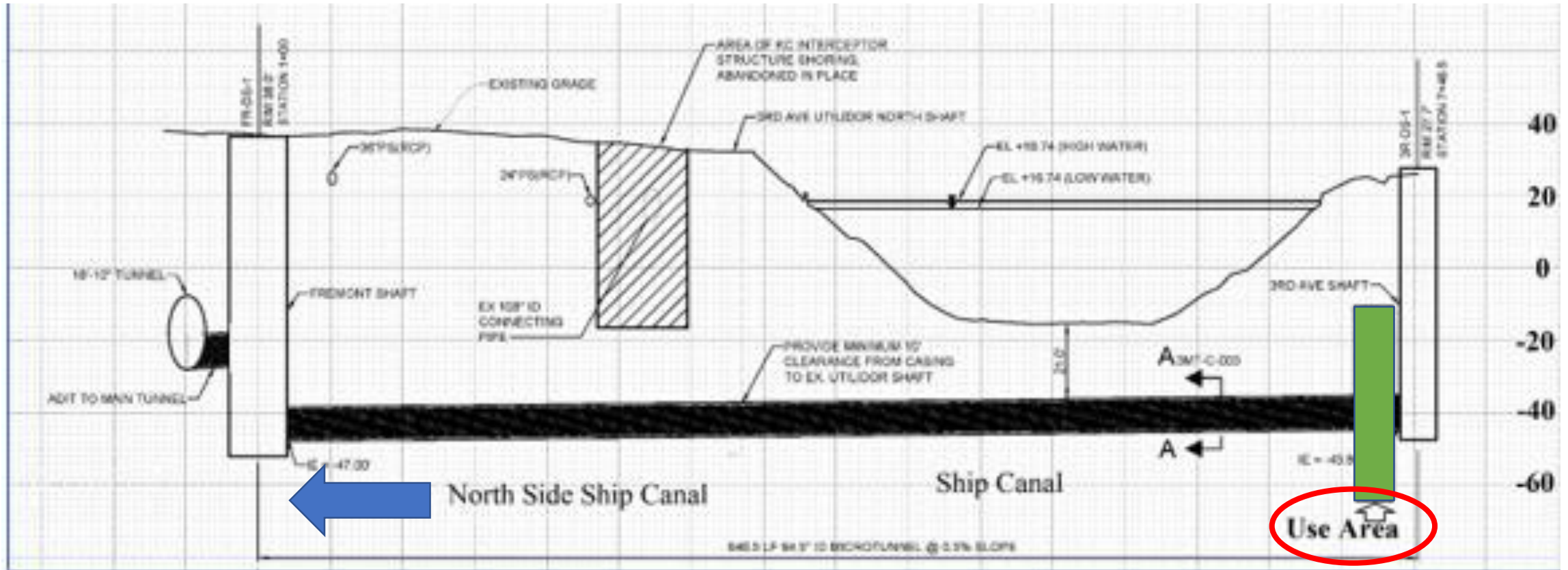
- SPU's Ship Canal Water Quality Project, under a National Pollutant Discharge Elimination System (NPDES) permit and federal Consent Decree, will install a microtunnel under the Ship Canal to convey wastewater from Fremont and Ballard to the King County sewage treatment facility.
- Due to physical constraints, SPU must bore a microtunnel 35 feet beneath a portion of the SPR parcel. The utility will not be detectable in the park but appurtenances exist and will be located in adjacent right of way.
- No utility features are planned on the surface of the SPR parcel.
- SPU will obtain a Revocable Use Permit for the period of construction and will restore park property to a condition as good as (or better than) prior to construction.



Tunnel Location



Tunnel Location (cont'd)



Why PTOJ ?

- A Partial Transfer of Jurisdiction (PTOJ) is a mechanism that assigns long-term property interests to different City departments (similar to a utility easement). It allows SPU to install and maintain its equipment without the need for a separate SPR permit.
- Site restoration is required whenever park land is disturbed.
- The park is small (0.3 acres) but affords a wonderful view of the Ship Canal and surrounding area.
- The PTOJ is limited to the use area that is 35 to 65 feet below the surface and approximately 15 feet square.
- The PTOJ is consistent with the requirements of Ord. 118477, which adopted Initiative 42.



Questions?

