



# SEATTLE CITY COUNCIL

## Land Use and Neighborhoods Committee

### Agenda

Wednesday, April 28, 2021

9:30 AM

### Public Hearing

Remote Meeting. Call 253-215-8782; Meeting ID: 586 416 9164; or  
Seattle Channel online.

Dan Strauss, Chair  
Teresa Mosqueda, Vice-Chair  
Debora Juarez, Member  
Andrew J. Lewis, Member  
Alex Pedersen, Member  
M. Lorena González, Alternate

Chair Info: 206-684-8806; [Dan.Strauss@seattle.gov](mailto:Dan.Strauss@seattle.gov)

[Watch Council Meetings Live](#) [View Past Council Meetings](#)

For accessibility information and for accommodation requests, please call  
206-684-8888 (TTY Relay 7-1-1), email [CouncilAgenda@Seattle.gov](mailto:CouncilAgenda@Seattle.gov), or visit  
<http://seattle.gov/cityclerk/accommodations>.



**SEATTLE CITY COUNCIL**  
**Land Use and Neighborhoods Committee**  
**Agenda**  
**April 28, 2021 - 9:30 AM**  
**Public Hearing**

**Meeting Location:**

Remote Meeting. Call 253-215-8782; Meeting ID: 586 416 9164; or Seattle Channel online.

**Committee Website:**

<http://www.seattle.gov/council/committees/land-use-and-neighborhoods>

---

This meeting also constitutes a meeting of the City Council, provided that the meeting shall be conducted as a committee meeting under the Council Rules and Procedures, and Council action shall be limited to committee business.

*In-person attendance is currently prohibited per Washington State Governor's Proclamation 20-28.15, until the COVID-19 State of Emergency is terminated or Proclamation 20-28 is rescinded by the Governor or State legislature. Meeting participation is limited to access by telephone conference line and online by the Seattle Channel.*

Register online to speak during the Public Comment period at the 9:30 a.m. Land Use and Neighborhoods Committee meeting at <http://www.seattle.gov/council/committees/public-comment>.

Online registration to speak at the Land Use and Neighborhoods Committee meeting will begin two hours before the 9:30 a.m. meeting start time, and registration will end at the conclusion of the Public Comment period during the meeting. Speakers must be registered in order to be recognized by the Chair.

Submit written comments to Councilmember Strauss at [Dan.Strauss@seattle.gov](mailto:Dan.Strauss@seattle.gov)

Sign-up to provide Public Comment at the meeting at <http://www.seattle.gov/council/committees/public-comment>

Watch live streaming video of the meeting at <http://www.seattle.gov/council/watch-council-live>

Listen to the meeting by calling the Council Chamber Listen Line at 253-215-8782 Meeting ID: 586 416 9164  
One Tap Mobile No. US: +12532158782,,5864169164#

Register online to speak at the Public Hearing during the Land Use and Neighborhoods Committee meeting at <http://www.seattle.gov/council/committees/public-comment>.

Online registration to speak at the Public Hearing during the Land Use and Neighborhoods Committee meeting will begin two hours before the 9:30 a.m. meeting start time, and registration will end at the conclusion of the Public Hearing during the meeting. Speakers must be registered in order to be recognized by the Chair. If you are unable to attend the remote meeting, please submit written comments to Councilmember Strauss at [Dan.Strauss@seattle.gov](mailto:Dan.Strauss@seattle.gov).

*Please Note: Times listed are estimated*

## **A. Call To Order**

## **B. Approval of the Agenda**

**C. Public Comment**

(10 minutes)

**D. Items of Business**

**1. CB 120001/Ordinance 126293 (Bringing Business Home) Public Hearing**

Supporting Documents: [Ordinance 126293 Presentation](#)

**Public Hearing**

**Presenter:** Ketil Freeman, Council Central Staff

Register online to speak at the Public Hearing during the Land Use and Neighborhoods Committee meeting at <http://www.seattle.gov/council/committees/public-comment>.

Online registration to speak at the Public Hearing during the Land Use and Neighborhoods Committee meeting will begin two hours before the 9:30 a.m. meeting start time, and registration will end at the conclusion of the Public Hearing during the meeting. Speakers must be registered in order to be recognized by the Chair. If you are unable to attend the remote meeting, please submit written comments to Councilmember Strauss at [Dan.Strauss@seattle.gov](mailto:Dan.Strauss@seattle.gov).



2. **Department of Neighborhoods (DON) Annual Report**

*Supporting Documents:* [Presentation](#)

**Briefing and Discussion** (30 minutes)

**Presenters:** Andrés Mantilla, Director, Elsa Batres-Boni, Sara Belz, Sam Read, and Jackie Mena, Department of Neighborhoods

3. **Office of Planning and Community Development (OPCD) and Seattle Department of Construction and Inspections (SDCI) Race and Social Justice Initiative (RSJI) Report**

*Supporting Documents:* [Presentation](#)

**Briefing and Discussion** (30 minutes)

**Presenters:** Rico Quirindongo, Interim Director, and Magda Hogness, Office of Planning and Community Development; Nathan Torgelson, Director, and Christopher Ndifon, Seattle Department of Construction and Inspections

4. **Seattle Design Commission Annual Report**

*Supporting Documents:* [Presentation](#)

**Briefing and Discussion** (30 minutes)

**Presenters:** Michael Jenkins, Executive Director, and Justin Clark, Acting Chair, Seattle Design Commission

**E. Adjournment**



Legislation Text

---

**File #:** Inf 1795, **Version:** 1

---

CB 120001/Ordinance 126293 (Bringing Business Home) Public Hearing



SEATTLE CITY COUNCIL  
CENTRAL STAFF

# Ordinance 126293 – Home Occupations: Interim Land Use Regulations for the COVID Civil Emergency



KETIL FREEMAN, LEGISLATIVE ANALYST

LAND USE AND NEIGHBORHOODS COMMITTEE

APRIL 28, 2021

# Legislative History

---

- Passed Council on March 15, 2021
- Purpose - Provide temporary regulatory flexibility for home-based businesses, including those that may have once operated out of a storefront, to operate with fewer restrictions during the COVID civil emergency.
- May allow more small businesses to remain operating during the pandemic and speed the economic recovery once pandemic restrictions are lifted.
- Expires in April 2022, unless Council adopts permanent changes to home occupation regulations.

# What does Ordinance 126293 do?

---

Relaxes certain performance standards for home occupations for up to one year. Those standards are limitations on:

- The number of employees;
- The type of customer visits;
- Sign size;
- Use of required parking for a home occupation;
- Increased traffic and parking demand; and
- The non-commercial appearance of home occupations.

The ordinance does not modify performance standards related to noise, odor, and other similar impacts; and maintains limitations on increased traffic and parking demand for auto-oriented home occupations, such as vehicle repair.

# Questions?



Legislation Text

---

**File #:** Inf 1796, **Version:** 1

---

Department of Neighborhoods (DON) Annual Report

# Seattle Department of Neighborhoods

Land Use and Neighborhoods Committee Presentation  
April 28, 2021



**Seattle**  
Neighborhoods





**Seattle**  
Neighborhoods

# 2020 Accomplishments

Presented by Andrés Mantilla



# 2020 Accomplishments

---

Seattle Department of Neighborhoods shifted our work to ensure that all Seattle residents, particularly our most vulnerable residents, had the resources, information, and support they needed to respond to and recover from the impacts of the COVID-19 pandemic.

# COVID-19 Response Efforts



# COVID-19 Response Efforts

Functioned as enterprise-wide outreach and engagement coordinator for the City's COVID-19 response efforts.

- Hosted COVID-19 Community Outreach Webinars.
- Organized Disaster Mental Health Training for city staff.
- Provided in-language digital outreach through Community Liaison videos.
- Organized distribution of face coverings.
- Coordinated outreach and engagement for SE Seattle and West Seattle COVID-19 Testing Sites.

# COVID-19 Response Efforts

- Led the Hygiene Station Inter-Departmental Team in siting more than 15 Hygiene Stations - providing hygiene services access to our unhoused neighbors.
- Supported HSD and King County on community engagement efforts during the opening of the King County SODO COVID-19 Shelter.
- Partnered with City Fruit to host 8 pop-up events at Seattle Housing Authority P-Patches. We served over 750 families with over 2,000 pounds of vegetables from P-Patch gardeners.



# Seattle Together

The graphic consists of a white rectangular area containing the text 'seattle together' in a bold, lowercase, sans-serif font. This central area is surrounded by four large, rounded rectangular blocks of color: a yellow block in the top-left, a green block in the top-right, an orange block in the bottom-left, and a magenta block in the bottom-right. The text is centered within the white area.

seattle  
together

# Seattle Together

- ARTS and DON brought together over 11 City departments to develop collaborative investments that fostered feelings of belonging, connection, and joy in Seattle.
- Developed new ways for the City to comprehensively meet the needs of local communities during the pandemic.



# Seattle Together

- Contracted with over 118 local artists and community groups - investing in our local creative economy while providing culturally relevant programming.
- Distributed over \$150,000 in mini-grants to honor frontline mutual aid organizations providing food access and public/mental health services to the communities most impacted by COVID-19.



# Interdepartmental Support



# Interdepartmental Support

- Community Liaisons provided technical and language assistance to small businesses in need of financial support from the Paycheck Protection Program to the Small Business Stabilization Fund.
- Worked with SDOT to pilot Stay Healthy Streets in marginalized communities, prioritizing outreach strategies that centered community voices.
- Provided outreach and engagement that centered BIPOC TNC drivers in the Fare Share wage legislation.

# Interdepartmental Support

- In partnership with SDOT, created a transformative community process for how to support West Seattle communities during the West Seattle Bridge closure.
- Co-led with Sound Transit the Racial Equity Toolkit on Sound Transit's West Seattle and Ballard Link Extension investment.
- Partnered with SDOT to review and approve sidewalk/street seating for food service businesses in historic districts.



# Census 2020



# Census 2020

- Led a coordinated campaign that resulted in an historic 76.3% self-response rate.
- Coordinated the Seattle Census Task Force, a group of community leaders who guided funding efforts, directed outreach strategies and helped promote Census to their communities.
- Partnered with the WA State Office of Financial Management to create a \$150,000 fund to invest in 22 Ethnic and Minority Media outlets.



# Innovations & Adaptations



# Innovations & Adaptations

- P-Patch Community Gardening Program shifted programmatic goals, strategies, and resources toward expanding relationships to BIPOC communities. From January – July 2020, 45% of all new gardeners across the program were placed from BIPOC groups.
- Historic Preservation program launched an online Certificate of Approval process and successfully transitioned regularly scheduled public meetings of the Landmarks Preservation Board and historic district boards from in-person events to virtual gatherings.

# Innovations & Adaptations

- As programs adjusted to engaging with community virtually, we worked to ensure that our Community Liaisons became well-versed in connecting with their communities digitally via social media, videos, and audio voice-overs.
- Despite budget cuts, our Neighborhood Matching Fund was able to award 23 community projects a total of \$756,626.
- P-Patch Giving Gardens donated 42,951 pounds of fresh produce to local food banks and meal programs.





**Seattle**  
Neighborhoods

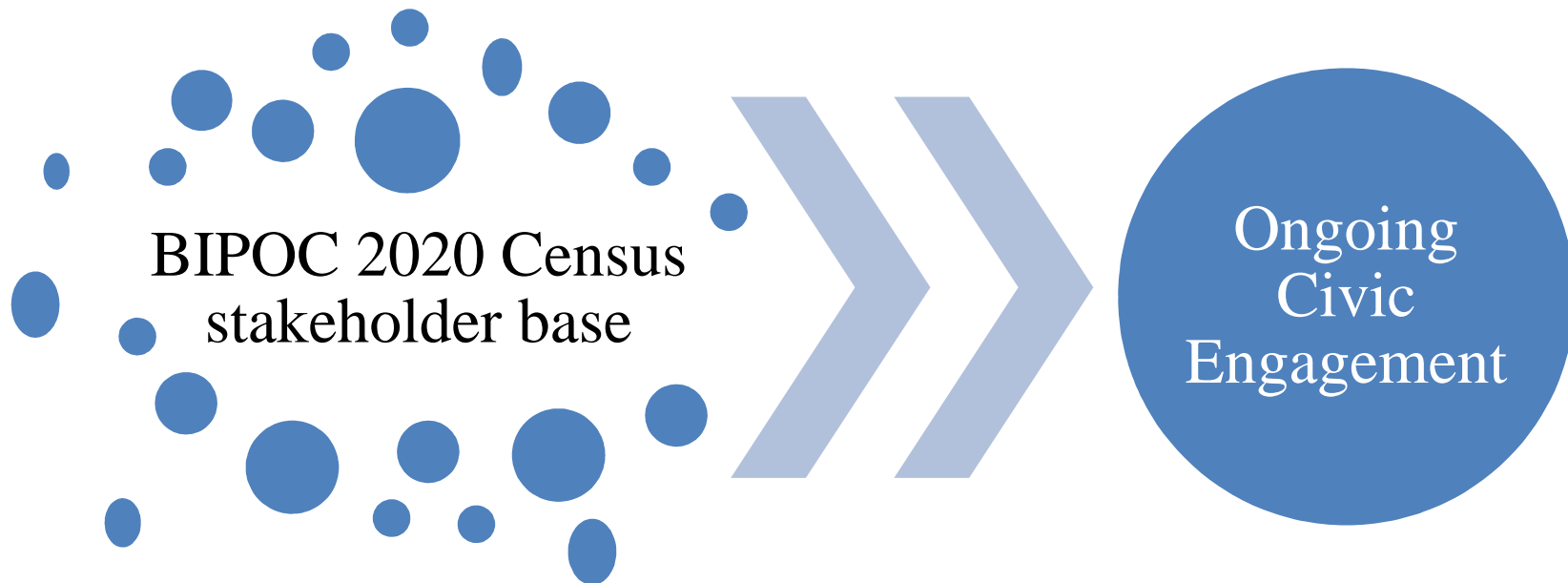
# People's Academy for Community Engagement (PACE)

Presented by Elsa Batres-Boni



# People's Academy for Community Engagement

## POST-COVID CIVIC ENGAGEMENT



# People's Academy for Community Engagement

## PROGRAM OVERVIEW

- Teaches the basics of city government and engagement
- Offers meaningful networking
- Introduces participants to decision makers
- Creates a pipeline for leadership and influence
- Offers participatory learning centered on current city initiatives

### NEW THIS YEAR:

- Shorter sessions, offered online
- Partnerships with BIPOC CBOs (Native, AAPI, Latino, African American)
- Issue/Community-based
- Participant stipends
- Co-created curriculum and recruitment plan

**PACE: NATIVE**



# People's Academy for Community Engagement

## HIGH LEVEL GOALS

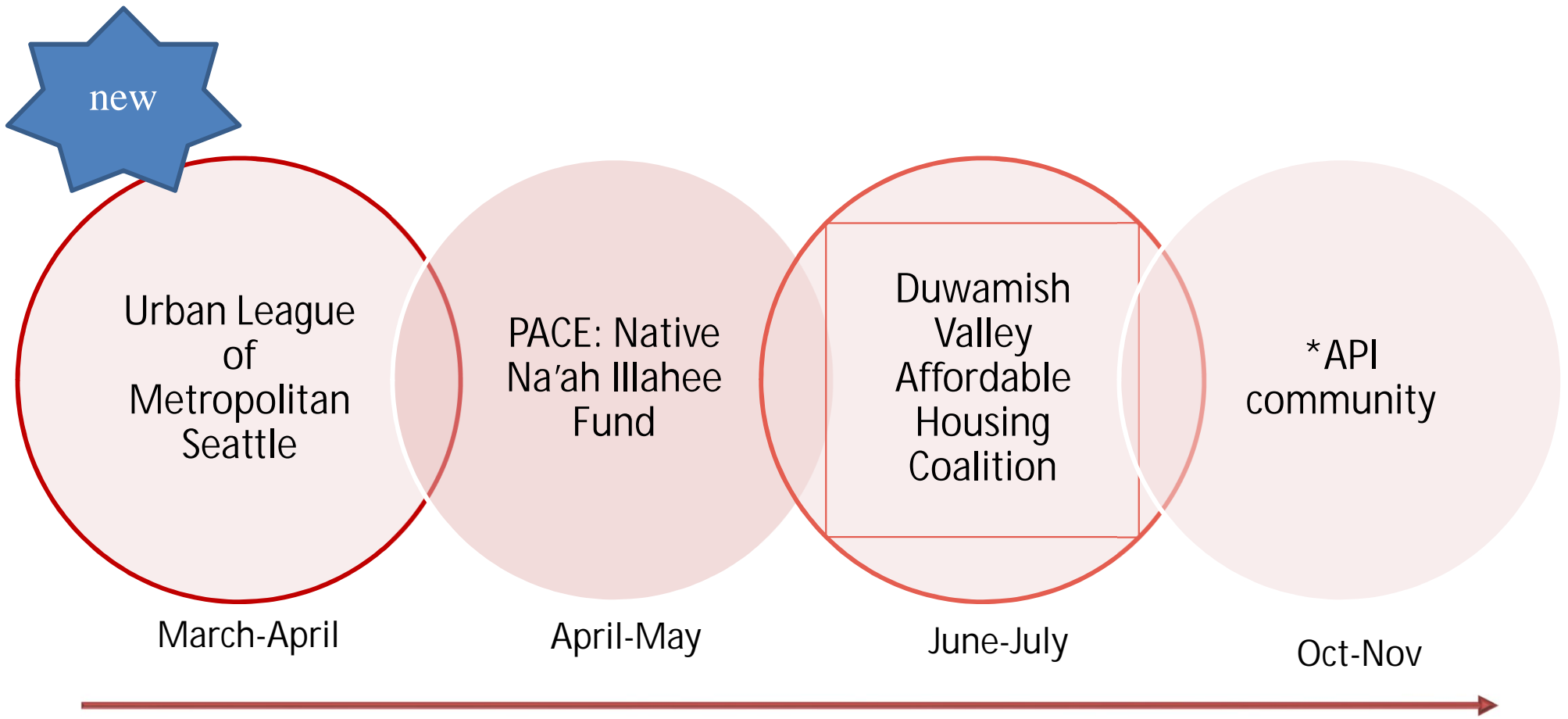
Education  
on City  
Government

Meaningful  
Networking

Connect and  
Learn with  
Decision Makers

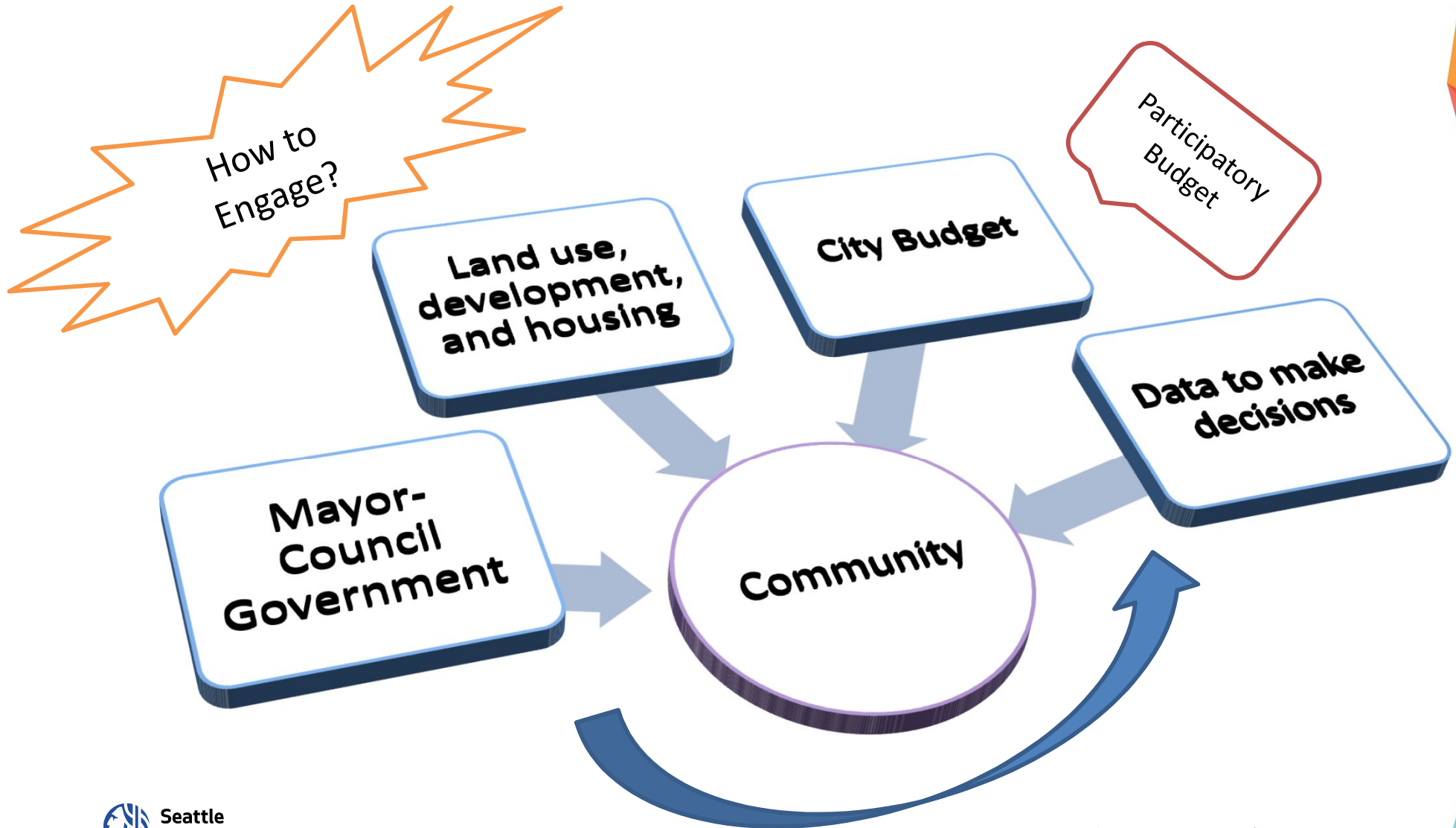
# People's Academy for Community Engagement

## ORGANIZATION ENGAGEMENT



# People's Academy for Community Engagement

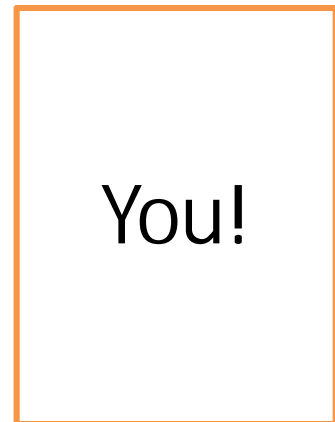
## CURRICULUM





# People's Academy for Community Engagement

## 2021 CITY SPEAKERS



# People's Academy for Community Engagement

## 2021 COMMUNITY PARTNERS



Susan Balbas, Executive Director  
Na'ah Illahee Fund



Na'ah Illahee Fund



Maya Manus, Civic Engagement Coordinator  
Urban League of Metropolitan Seattle



Urban League of  
Metropolitan Seattle



THANK YOU!

---



**Seattle**  
Neighborhoods



Legislation Text

---

**File #:** Inf 1797, **Version:** 1

---

Office of Planning and Community Development (OPCD) and Seattle Department of Construction and Inspections (SDCI)  
Race and Social Justice Initiative (RSJI) Report

# SDCI & OPCD RSJI Report to Council

April 28, 2021

UPDATE ON 2021 RSJI WORK &  
RACIAL EQUITY TOOLKITS

## P R E S E N T E R S

Nathan Torgelson, Director SDCI  
Christopher Ndifon, Co-Lead SDCI

Rico Quirindongo, Interim Director OPCD  
Magda Hogness, Co-Lead OPCD



## Introduction & Overview

- 2020 accomplishments
- Racial Equity Toolkits
- Goals for 2021

### Our Mission

The Change Team is a group of employees who partner with leadership to identify and dismantle the racism that permeates every aspect of our work and our lives.



# Indigenous Land Acknowledgement

On behalf of SDCI & OPCD we'd like to actively recognize that we are on indigenous land, the traditional and current territories of the Coast Salish people.



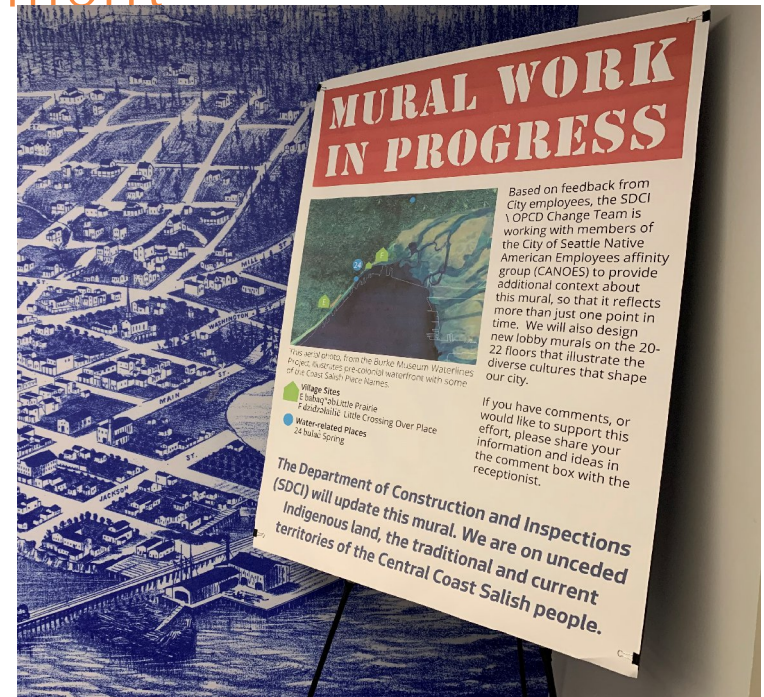
SDCI & OPCD



# Change Team and Lead with Equity 2020 Accomplishments

## Growing Participation & Engagement

- Participating in the RSJI Summit on panel discussions
- Establishing the Change Team Charter and charter committees
- Writing RSJ Citywide co-leads letter to the Mayor
- Growing participation in other groups including the BIPOC Caucus, White Caucus, Leading with Equity Team
- Creating Sharing Seattle Stories, a website that compiles written and oral stories of leaders in Seattle with illustrations.
- Commenting on two Racial Equity Toolkits
- Developing Community Agreements (Ongoing)
- SMT 19th floor mural changes to include indigenous history and communi? es.



SDCI 19th floor mural with our Change Team's message for updating

SDCI & OPCD

## 2020 Accomplishments: Equitable Development Initiative

- New Permanent Advisory Board. Over the last four years, the interim EDI Advisory Board has led RFP process, distributing over \$21M, supporting over 30 projects in Capacity Building, Acquisition, and Capital grants to bring community-driven projects to light.
- Responding to community needs that arose. Partnerships with 37 community organizations through EDI COVID-19 response 2020 RFP.
- Supporting other departments with their grants, funding, and planning (OED, OIRA, OSE, OEM)
- Developing the [OPCD Equitable Recovery Principles](#) document
- Black Brilliance Project requested OPCD to collaborate with them on participatory budgeting due to EDI process serving as an exemplary model
- Creating Equity Indicators Report
- Five Staff participating on RSJ Key Leaders training
- Responding to SDHR's survey

## 2020 Accomplishments: Indigenous Seattle

To educate our departments and our communities about Indigenous people, their culture, and their histories, and how Indigenous communities can influence our work in an authentic way.

### Indigenous Seattle Internship

- Indigenous planning research (ongoing)
- Indigenizing the Comprehensive Plan
- Workshop on Racial Equity in Seattle 2035 Comp Plan





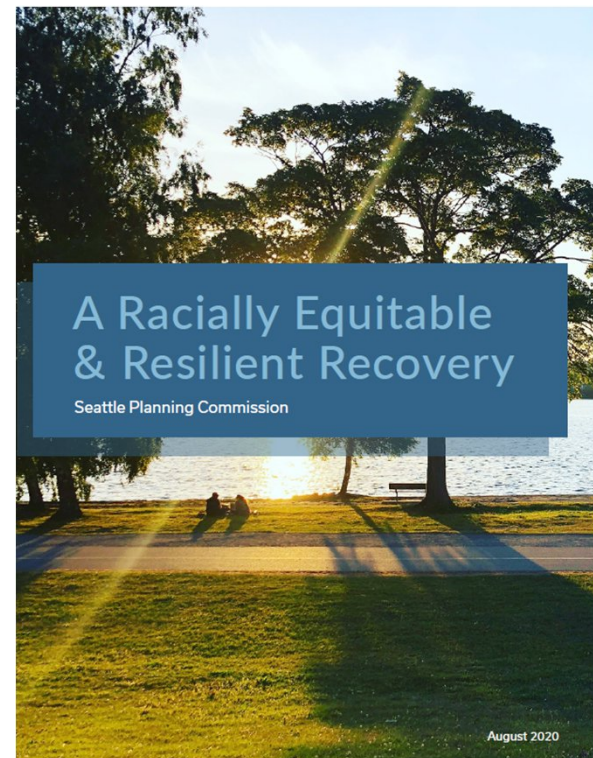
# 2020 Accomplishments: Commissions

## Seattle Planning Commission

- Released 'A Racially Equitable and Resilient Recovery', a report urging the City to radically shift practices, programs and policies toward a new paradigm that prioritizes recovery resources for achieving racial equity. In the face of a global pandemic which disproportionately harms Black, Indigenous, and People of Color (BIPOC), Seattle must plan for a "recovery" that does not simply restore and perpetuate our city's legacy of systemic racial inequity.

## Seattle Design Commission

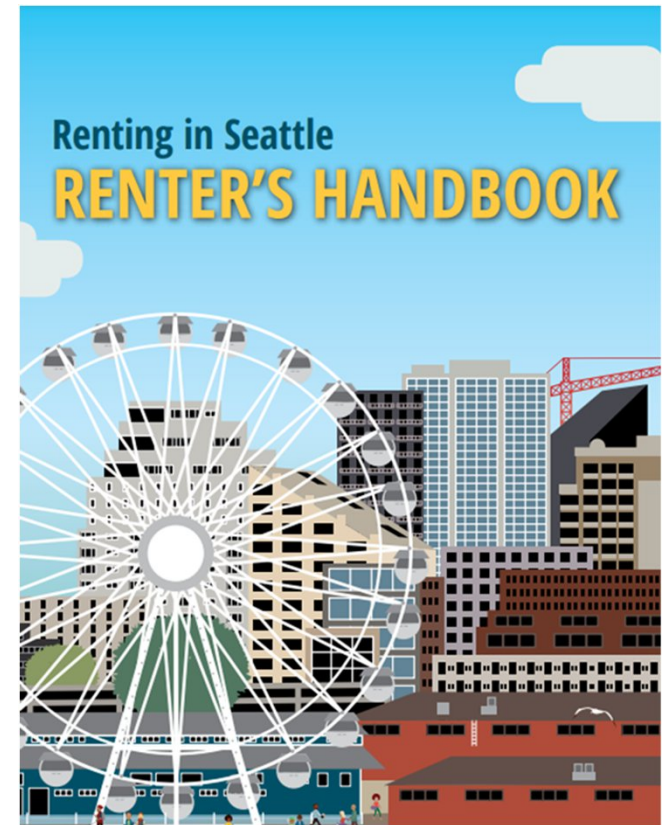
- Prepared a letter requesting City departments adopt specific policies to name city facilities for BIPOC people, places, and events. Sent to Mayor, City Departments, and Council.
- Drafted a letter to Sound Transit requesting more equitable outcomes on disposition of vacant or underutilized properties not suitable for redevelopment



SDCI & OPCD

## Accomplishments: Renter's Handbook

- Provided to all renters at move-in and periodically thereafter
- Replaces dense, legalistic "Information for Tenants"
- Accessible, easy to read, plain language
- Covers renter's rights, plus tips and resources
- Translated into 13 languages
- Available as a booklet, printer-friendly version, or online at [seattle.gov/rentinginseattle](http://seattle.gov/rentinginseattle)



SDCI & OPCD

## 2020 Accomplishments: Internal Training

- Internal: Hiring & implicit bias (ongoing & expanding)
- Racial Equity Toolkit training with Seattle Office of Civil Rights
- Implicit Bias
- Internalized Racial Inferiority
- BIPOC and White Caucuses
- *Cracking the Codes* film and facilitated conversation for all staff



SDCI & OPCD

## 2020 Accomplishments: External Training

- Land Use 101: Urban Planning as Settler Colonialism (3 trainings, ongoing)
- RSJI Summit, September 2020 virtual summit hosted by Seattle Office for Civil Rights – OPCD, DON, OED all participated in a panel discussion at Seattle Center regarding projects in the Chinatown International District
- RSJI Summit & MLK Jr. Unity Day 2021 hosted by Seattle Office for Civil Rights Black Director's Forum: Black Leadership in City of Seattle Government Panel Discussion. What does Black leadership in government look like during the time of Black Lives Matter? Samuel Assefa (OPCD)



SDCI & OPCD

## 2020 Accomplishments: Workforce Equity

- Seattle Youth Employment Program (SYEP)
  - Due to COVID could not host Youth in 2020
  - Have signed on for 2 in 2021
- SDCI Job Shadow Program - Mentorship
  - Job Shadow was suspended due to COVID
  - Involved in City Wide effort to establish a framework and best practices for a Mentorship program with potential for a shared digital program across the City. We understand that employee development and mobility are enhanced with mentorships especially for women of color.
- Reviewed and updated Hiring Process training to include anti-racism and debiasing strategies.
- Successfully piloted anonymized application materials for interview panels

# Summary of 2020 RSJI Challenges

highlight institutional obstacles and barriers that your team was unable to navigate around.

## Obstacles and barriers

- Distance between people due to COVID. Building trust with colleagues in a remote environment.
- As departments moving beyond reliance on individuals and take responsibility for RSJI work.
- Emotional labor of the work is not accounted for. Imbalance of speaking from experience vs offering support.
- Having dedicated time to organize against white supremacy
- Open forum, all staff meetings responding to dominate culture rather than centering the most impacted.
- Continued sense of urgency that makes it difficult to take time to be inclusive, encourage democratic and/or thoughtful decision-making, to think long-term, to consider consequences

SDCI & OPCD

## Summary of 2020 RSJI Challenges

highlight institutional obstacles and barriers that your team was unable to navigate around. What would need to happen for those barriers to be eliminated?

### Removing the barriers

- Building relational culture; weaving our shared humanity and belonging and co-liberation and creating a culture of belonging and inclusion
- Centering the most impacted. It's about the impact not the intent. Centering black voices.
- Having flexibility in scope, schedule, and budget make it easier to work with Communities and build relationships, rather than just completing projects to meet deadlines.
- Recognizing that equity work is the work and deepening equity work as a foundational piece of the work
- Building the culture of failing forward (and how to do so knowing that white or males just have to show potential of leadership, women or BIPOC have to reprove themselves over and over)



How the "spirit" of RSJI appeared in our workplaces last year?

How did departments create space for people to share their reflections, anger, fear, and joy?

- BIPOC and white caucuses
- SDCI/OPCD Change Team Reading Group
- RSJI summit panel discussion focused on CID
- RSJ Citywide co-leads letter to the Mayor
- List of recovery principles outlining a new level of commitment
- EDI convenings and funders roundtable
- RSJI integrated budget prioritization



# Racial Equity Toolkits: Summary

## *SDCI*

- Bluebeam Implementation
- Tree Protections Update

OPCD ongoing and in partnership with other departments

- Light Rail Expansion/ST3
- Industrial and Maritime Strategy

Groundwork for leading with equity



SDCI & OPCD

# RACIAL EQUITY TOOLKIT:

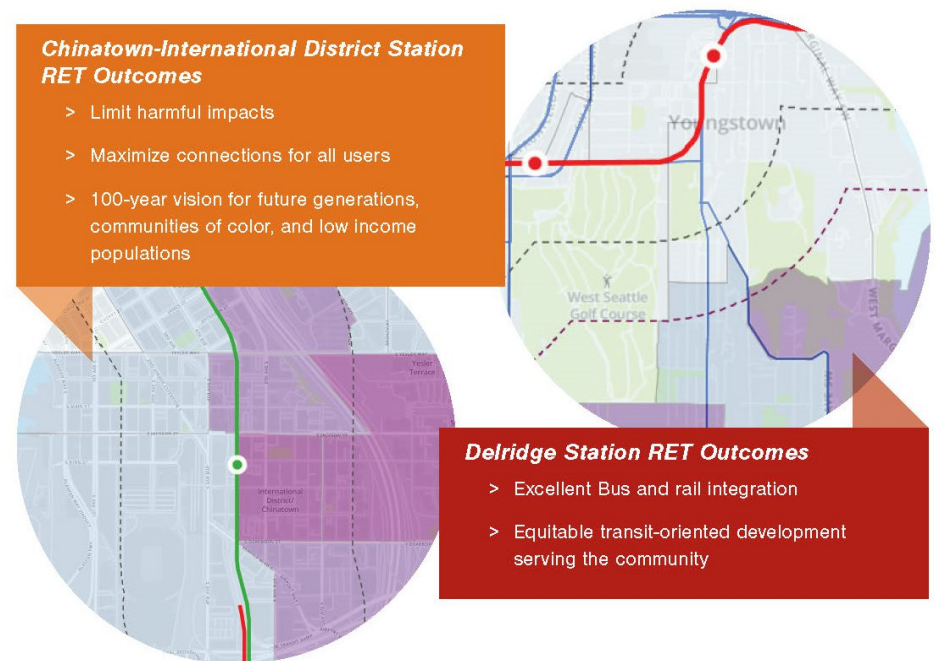
## Sound Transit West Seattle and Ballard Link Extensions

### Racial Equity Outcomes

- Enhance mobility and access for communities of color and low-income populations;
- Create opportunities for equitable development that benefit communities of color;
- Avoid disproportionate impacts on communities of color and low-income populations; and
- Meaningfully involve communities of color and low-income populations in the project.

### Operationalizing the racial equity outcomes

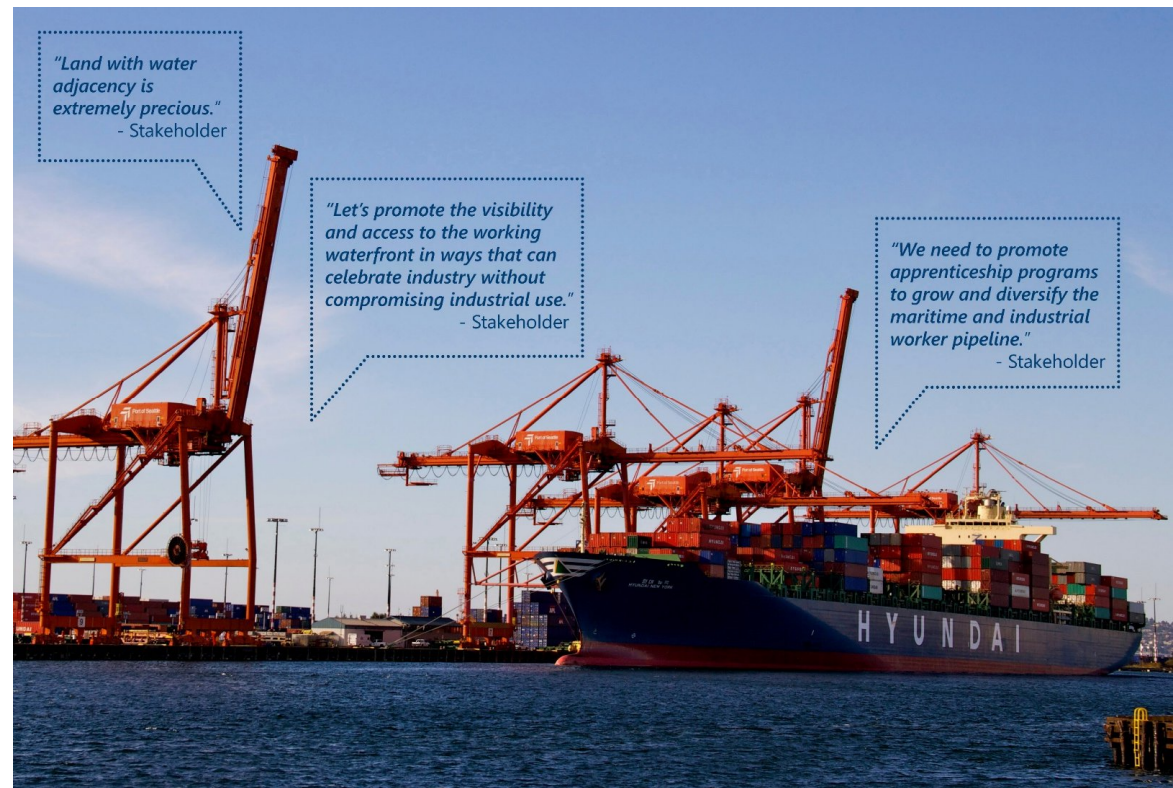
The planning workgroup (led by OPCD), holds Quarterly RET Convenings, to share strategies for centering race, best practices, and lessons learned along the way, and identify any emergent or recurring needs for RET process improvement.



# RACIAL EQUITY TOOLKIT: Industrial and Maritime Strategy

## Racial Equity Outcomes

- Improve equitable access to jobs/opportunity. The maritime and industrial sectors offer excellent opportunities for business ownership and careers in well-paying jobs without traditional 4-year degrees, but access to those opportunities have historically been exclusionary.
- Remove disparity of environmental health impacts. Proximity to the hazardous pollutants generated by industrial uses and supporting freight has created health disparities for BIPOC communities
- Assist communities to prosper in place.
- Improve safety and health for workers.



SDCI & OPCD

# RSJI TOOLKIT: Tree Protections Update

## Racial Equity Outcomes

- Ensure that urban forestry services, benefits, and stewardship opportunities are distributed equitably across communities, particularly BIPOC communities.
- Assume responsibility for mitigating disproportionate historical impacts of City government action.
- Reduce disproportionate negative impacts to BIPOC communities due to having fewer trees.
- Reduce the burdens of tree regulations implementation and enforcement on BIPOC communities and businesses.



SDCI & OPCD

# RSJI TOOLKIT: Bluebeam Implementation

## Racial Equity Outcome:

- Ensure that undue burden is not inflicted on applicants regardless of their race.

The project intends to deliver marked up pdfs generated through Bluebeam to the applicant via the Accela portal.

The project will give special consideration to one-time or infrequent users of SDCI plan review services to either ensure that the technology is not a burden or provide an alternative path for their transactions.

Public outreach and education will be necessary to ensure that applicants not currently using or familiar with ReVu are not disenfranchised.

# Change Team Goals for 2021

- Leading with equity and putting it into practice!
- Working with our RSJI liaison Diana Falchuk to develop a workplan to sharpen our focus on anti-racism work and address issues brought up by BIPOC staff.
- Supporting employees of color. Become anti-racist advocates. Respond to and address all the levels of overt and covert racism as they surface.
- Growing participation, create and share message(s) with SDCI/OPCD staff outlining the roles of the Change Team and ways to get involved
- Help support future collaboration with SOCR, BIPOC group, White ally/accountability group and executive team. Clarify roles of each group and ways to create a culture of mutual support
- Developing Community Agreements (Ongoing)



## Change Team Goals for 2021

- Provide guidance for internal RSJI messaging. Create template for Change Team newsletter/updates
- Work with SDCI Communications team to collaborate with other departments for City-wide RSJI Change Team communications.
- Reach out to other departments to collaborate on Sharing Seattle Stories project
- Continuing conversation on SMT 19th floor mural issue
- Create City-wide RSJI resource library
- Racial equity work is required for all SDCI & OPCD staff, and enforced through E3

# Lead With Equity Goals for 2021: Highlights

- Racial equity work is mandatory for all OPCD staff
- Support our culture shift: healing from the culture of harm built by colonialism and white supremacy culture requires us to recognize our personal agency within the system of City government, learn about our roles in reinforcing harmful patterns that underpin racial inequity, and take action to build a more equitable society
- Center racial equity in 2022 budget. LWE team establishes principles and framework, supports other staff with their equity analysis in budget requests and support office-wide equity analysis
- Strengthen inclusive public engagement, using racial equity best practices, so that BIPOC communities can co-create a vision for more inclusive neighborhoods that the City helps implement
- Measure the success of specific policy and programmatic changes in OPCD by developing a baseline and setting goals that hold us accountable using quantitative and qualitative data



# Thank you!

## **SDCI**

- Jared Bigelow
- Corey Buttry
- Linda Elwood
- Nicole Levy
- Faith Lumsden
- Muhammed Memon
- Rhett Miller
- Christopher Ndifon, Co-Lead
- Qiana Norwood
- Katrina Nygaard
- Janet Oslund
- Amanda Pleasant-Brown
- Danielle Priest, Executive Sponsor
- Ben Scott
- Patricia Spears
- Collin Tam
- Emilie Voight

## **OPCD**

- Connie Combs
- Ian Dapiaoen, 2020-21 Co-Lead
- Lauren Flemister
- Ubax Gardheere, EDI Director
- Magda Hogness, Current Co-Lead
- Melissa Lawrie, Executive Sponsor
- Sauncha Romey
- Katie Sheehy
- Janet Shull
- Brennon Staley
- Patrice Thomas
- Andrew Tran
- Nicolas Welch
- Bo Zhang

SDCI & OPCD



Legislation Text

---

**File #:** Inf 1798, **Version:** 1

---

Seattle Design Commission Annual Report

# Seattle Design Commission 2020 Annual Report

Land Use and Neighborhood Committee  
April 28th, 2021



# Presentation outline

Overview

2020 year in review

2020 highlights

What is coming in 2021

# Overview of the Commission

- **Established in 1968**
- **Advise the Mayor and City Council on projects affecting the public realm, including:**
  - **Capital Improvement Program projects (CIP)**
  - **Right-of-Way projects (ROW)**
    - Street and alley vacations
    - Skybridges
    - Long-term street use permits
  - **Major transportation projects (M)**
  - **Plan or policy reviews (P)**
  - **Oversight of ST3 Light Rail Investments**

# Overview of the Commission

**Appointed by Mayor, confirmed by Council**

**4 required appointments:**

- 2 Licensed Architects
- 1 Fine Artist
- 1 lay member

**5 additional appointments from the following professions:**

- Urban Planner
- Urban or Environmental Designer
- Licensed Engineer
- Landscape Architect

**1 member from YMCA Get Engaged Program**



\*Awaiting Council to appoint the Urban Planner position, At-Large position, and Chair



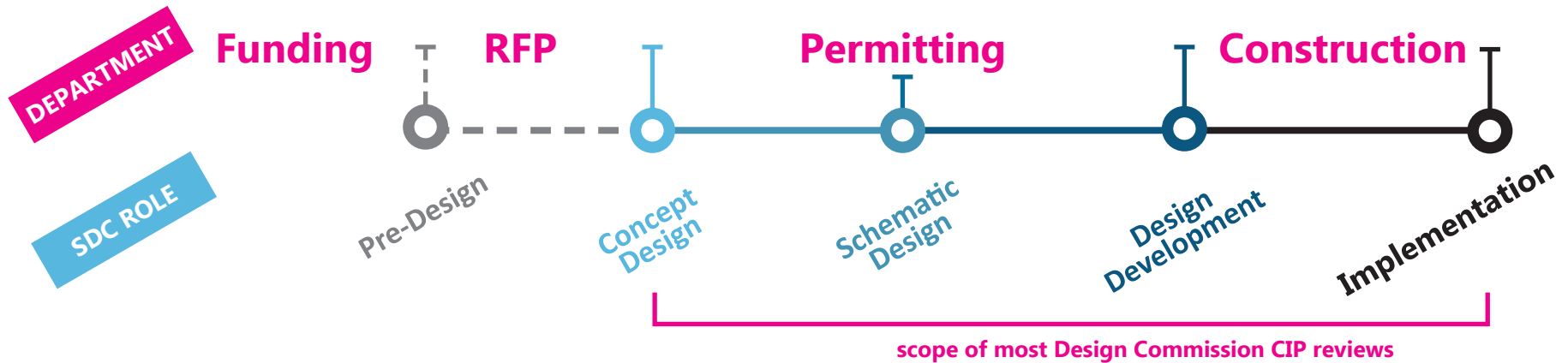
# Overview of the Commission

## Mission

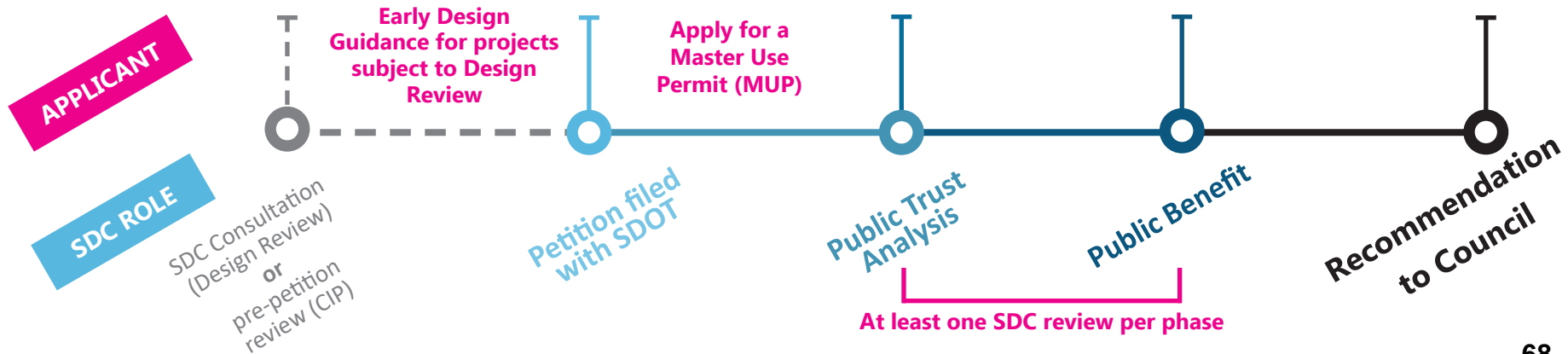
- **Inspired Design** - Inspired design unifies the public realm and inspires the community by embodying state-of-the-art practices.
- **Contextual Integration** - Integrated design responds to its context and enhances its neighborhood.
- **Innovative Sustainability** - Sustainable design minimizes environmental impact and provides long-term self-sufficiency.
- **Social Inclusion** - Inclusive design seeks to elevate the quality of life for all and responds fluently to its cultural context.
- **Exemplary Partnerships** - Design partnerships leverage public, community, and private resources, integrating design efforts across multiple disciplines and agencies to achieve greater results with the same resources.
- **Effective Investments** - Effective design provides high value for the investment by thoughtfully considering flexibility, longevity, and total life-cycle costs.

# Overview of the Commission

## Capital Improvement Program



## Street & Alley Vacations and Skybridge



# 2020 Year in Review

## Downtown / SODO

9 projects | \$535 million\*

## Ballard

1 project | \$15 million

## Capitol Hill

1 project | \$80,000

## Greenlake

1 project | \$6.5 million

## Southeast Seattle

2 projects | \$87.5 million

## South Park / Georgetown

1 projects | \$2.09 million

## South Lake Union

2 projects | \$5 million\*

## North Seattle

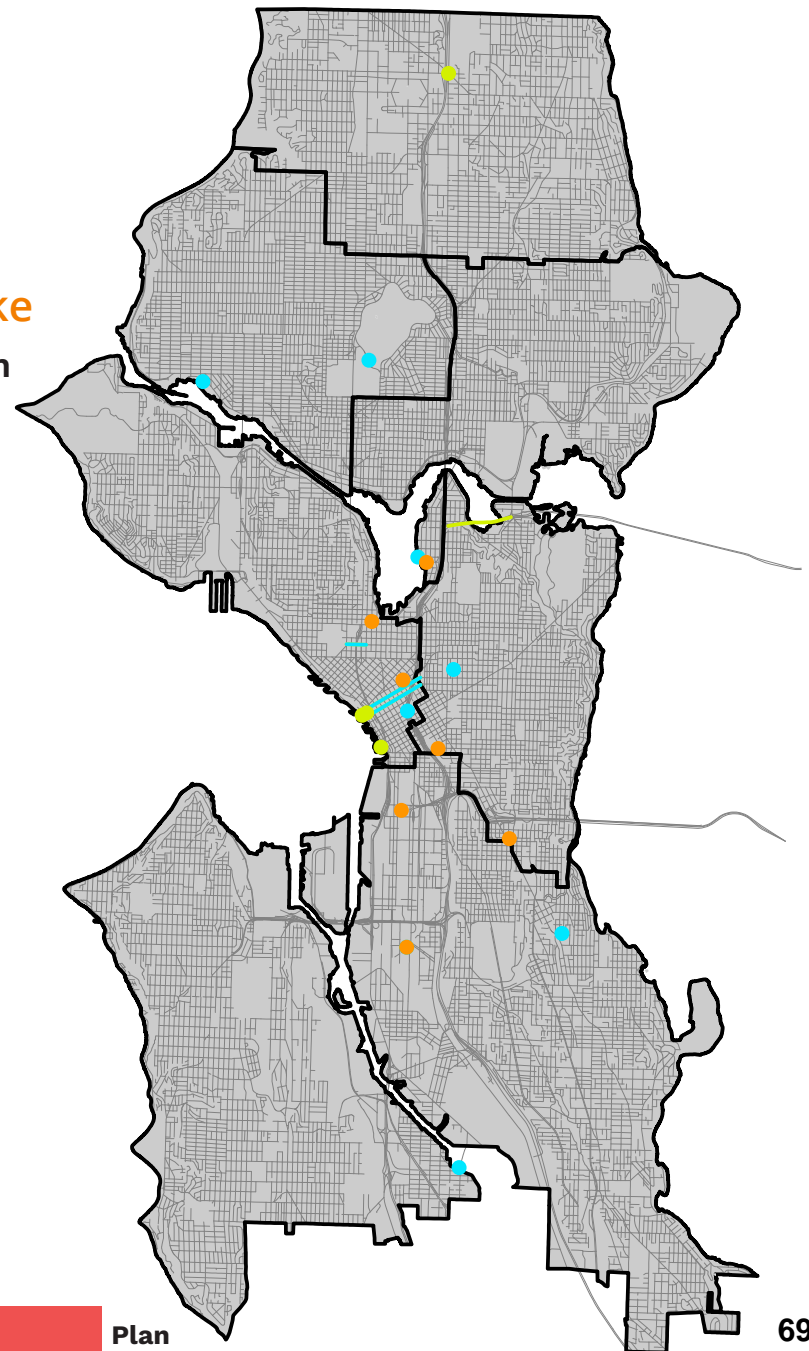
1 project | \$144 million

## Montlake / Eastlake

3 projects | \$822 million

## Citywide

4 projects



\*Does not include projects reviewed to meet condition of approval



CIP



ROW

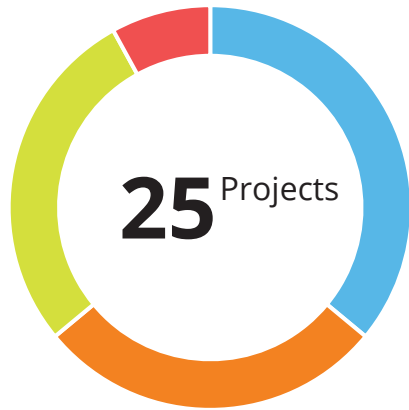


Major Project



Plan

# 2020 Year in Review



- CIP (36%)
- ROW (28%)
- Major Project (28%)
- Plans (8%)

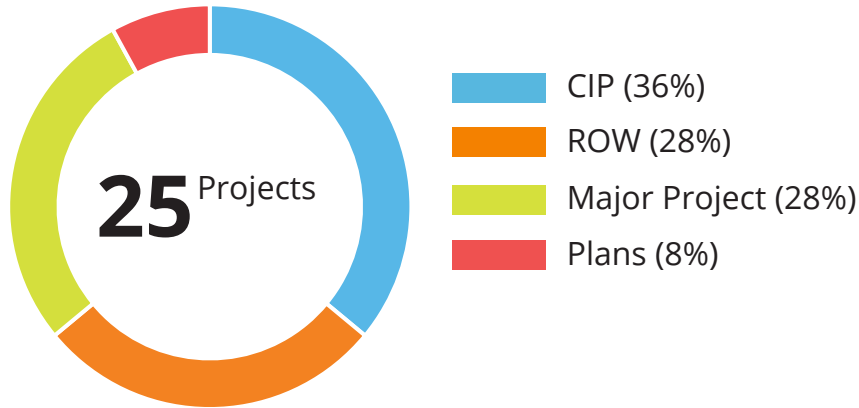


- CIP (33%)
- ROW (24%)
- Major Project (35%)
- Plans (8%)

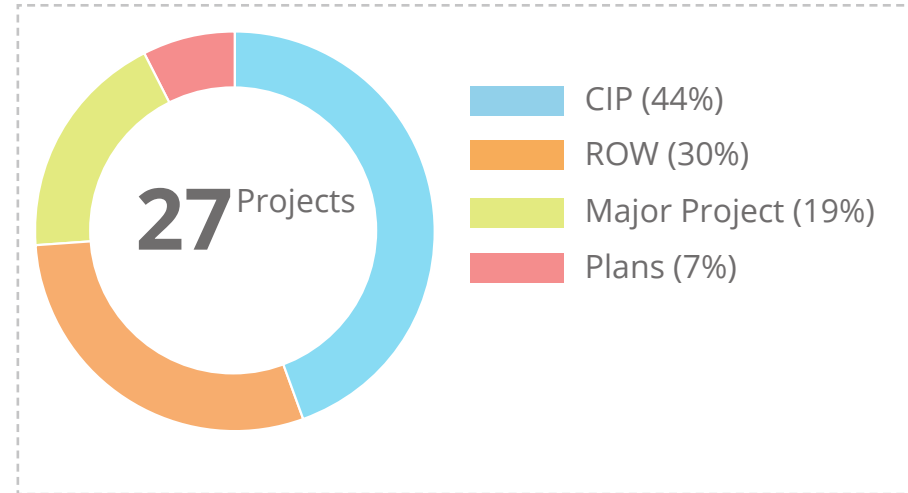


- CIP (28%)
- ROW (20%)
- Major Project (46%)
- Plans (6%)

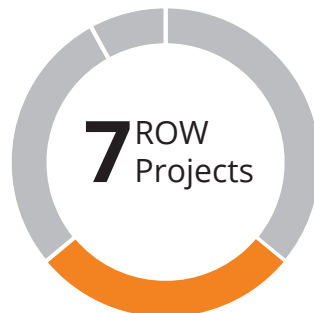
# 2020 Year in Review



## 2019 Project Statistics



- Ballard Pump Station
- Cal Anderson Park
- Freeway Park Improvements
- Greenlake Community Boathouse\*
- North Rainier Park Development
- South Park Plaza
- Terry Pettus Park
- Thomas St Redefined
- Pike Pine Renaissance



- E Howe Steps\*
- Mariner's Perimeter Safety Project\*
- Mercer Blocks (816 Mercer)\*
- Mt. Baker Housing Street Vacation
- SCL - Diagonal Street Vacation
- WSSC Expansion
- Yesler Terrace Pocket Park III



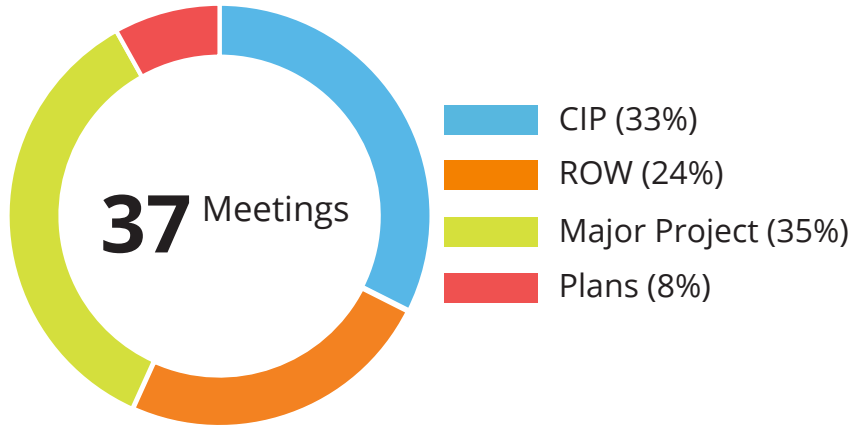
- NE 130th St Light Rail Station
- Colman Dock\*
- WSBLE Briefings
- WSBLE Workshops (Internal)\*
- SR 520 - Portage Bay Bridge and Roanoke Lid\*
- Waterfront - Seattle Aquarium
- Waterfront - Overlook Walk



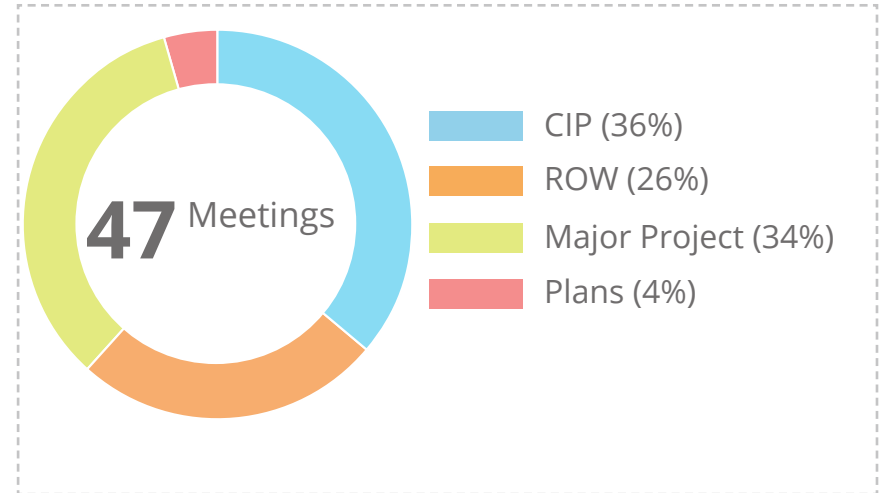
- Skybridge Director's Rule Update
- WSBLE CoS Design Guidelines

\* Only reviewed at a subcommittee **71**

# 2020 Year in Review



## 2019 Meeting Statistics



- 3 Ballard Pump Station\*
- 1 Cal Anderson Park
- 1 Freeway Park Improvements
- 1 Greenlake Community Boathouse\*
- 1 North Rainier Park Development
- 1 South Park Plaza
- 2 Terry Pettus Park
- 1 Thomas St Redefined
- 1 Pike Pine Renaissance



- 1 E Howe Steps\*
- 1 Mariner's Perimeter Safety Project\*
- 1 Mercer Blocks (816 Mercer)\*
- 1 Mt. Baker Housing Street Vacation
- 3 SCL - Diagonal Street Vacation\*
- 1 WSCC Expansion
- 1 Yesler Terrace Pocket Park III



- 1 NE 130th St Light Rail Station
- 1 Colman Dock\*
- 1 WSBLE Briefings
- 4 WSBLE Workshops (Internal)\*
- 2 SR 520 - Portage Bay Bridge and Roanoke Lid\*
- 2 Waterfront - Seattle Aquarium
- 2 Waterfront - Overlook Walk

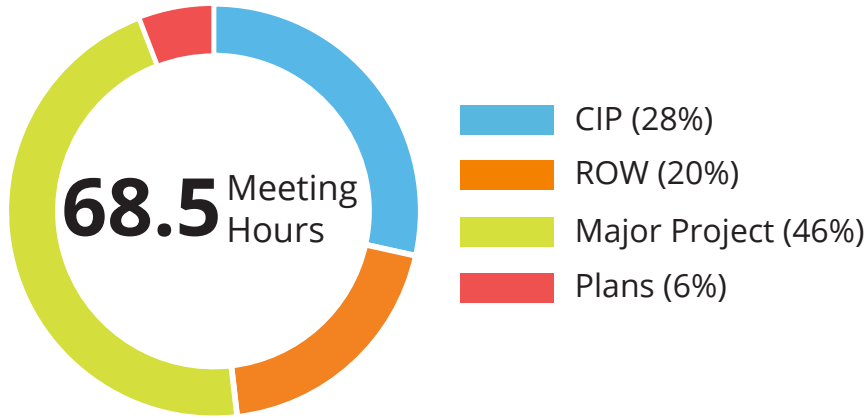


- 1 Skybridge Director's Rule Update
- 2 WSBLE CoS Design Guidelines\*

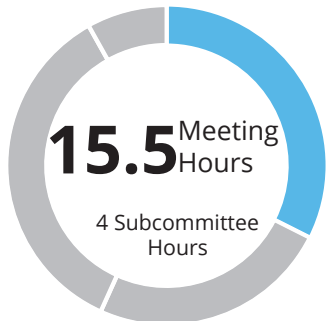
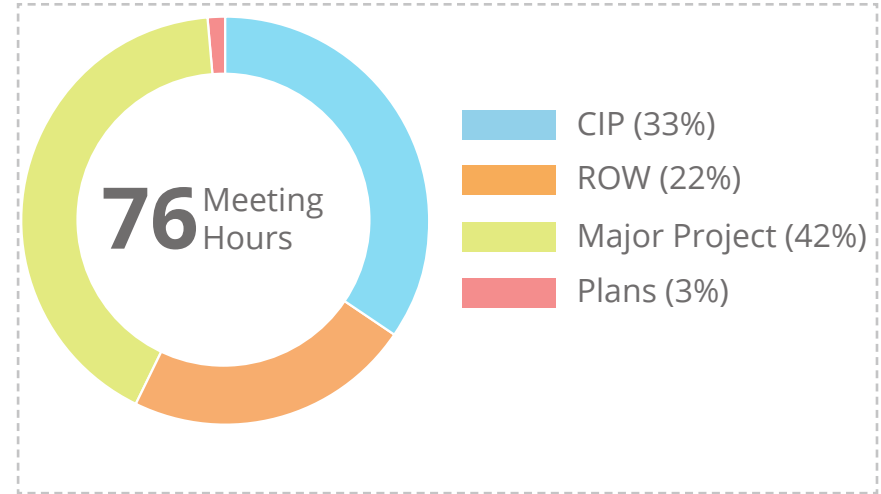
\* subcommittee review  
multiple reviews



# 2020 Year in Review



## 2019 Meeting Statistics



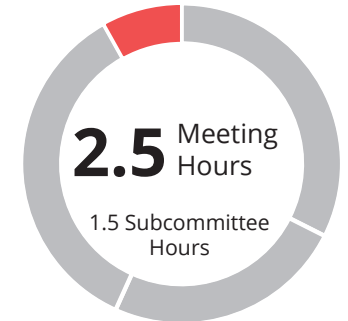
- 6 Ballard Pump Station\*
- 2 Cal Anderson Park
- 1.5 Freeway Park Improvements
- 1 Greenlake Community Boathouse\*
- 1.5 North Rainier Park Development
- 1.5 South Park Plaza
- 3 Terry Pettus Park
- 1 Thomas St Redefine
- 2 Pike Pine Renaissance



- 1 E Howe Steps\*
- 1 Mariner's Perimeter Safety Project\*
- 1 Mercer Blocks (816 Mercer)\*
- 2 Mt. Baker Housing Street Vacation
- 5 SCL - Diagonal Street Vacation\*
- 2 WSCC Expansion
- 1.5 Yesler Terrace Pocket Park III



- 2.5 NE 130th St Light Rail Station
- 1.5 Colman Dock\*
- 1 WSBLE Briefings
- 14.5 WSBLE Workshops (Internal)\*
- 3.5 SR 520 - Portage Bay Bridge and Roanoke Lid\*
- 3.75 Waterfront - Seattle Aquarium
- 4.75 Waterfront - Overlook Walk



- 1 Skybridge Director's Rule Update
- 3 WSBLE CoS Design Guidelines\*

\* subcommittee review  
multiple reviews

# 2020 Year in Review

**\$1.6 Billion**

In total project reviews

**\$72.3 Million**

CIP Projects

**\$91 Million**

ROW Projects

**\$1.45 Billion**

Major Projects

**\$-**

Plans

**797** Combined  
Commissioner Hours

**708 billable**

- SDC meetings
- Subcommittee meetings
- Consultant selection panel
- Public Art Advisory Committee
- Administrative reviews
- Writing - Memos & letters

**89 non-billable**

- Review of meeting minutes
- Adhoc committees
- Research
- Prep meetings
- Staff meetings
- Interviews
- Project tours
- Annual retreat
- SDC special project
- Council meetings

# 2020 Highlights

## SR 520 - Roanoke Lid & Portage Bay Bridge

Review of urban design principles





# 2020 Highlights

## SR 520 - Roanoke Lid & Portage Bay Bridge

Review of urban design principles





# 2020 Highlights

## Ballard Pump Station

### Updated Site Plan



View from 24th Ave NW & NW 54th St



View from 24th Ave NW Street End



# 2020 Highlights

## Ballard Pump Station - 24th Ave NW Streetend

### Updates:

- Revised vehicular access in coordination with adjacent property owner to existing gate
- Added additional planting and seating
- Refined design elements



Removable bollards

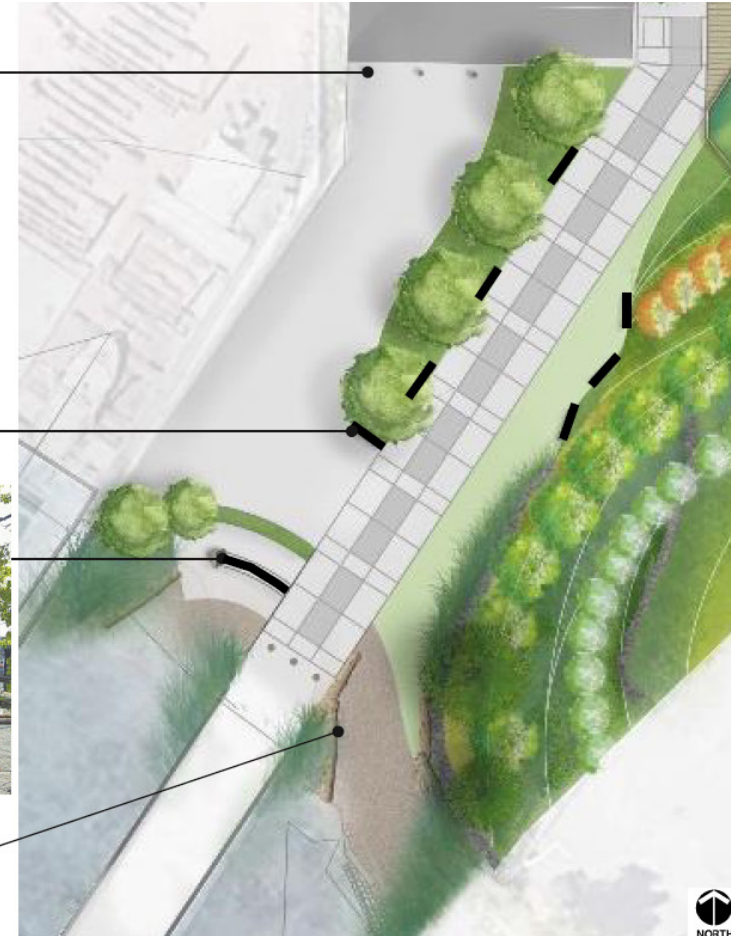


Benches



View looking to water & pier

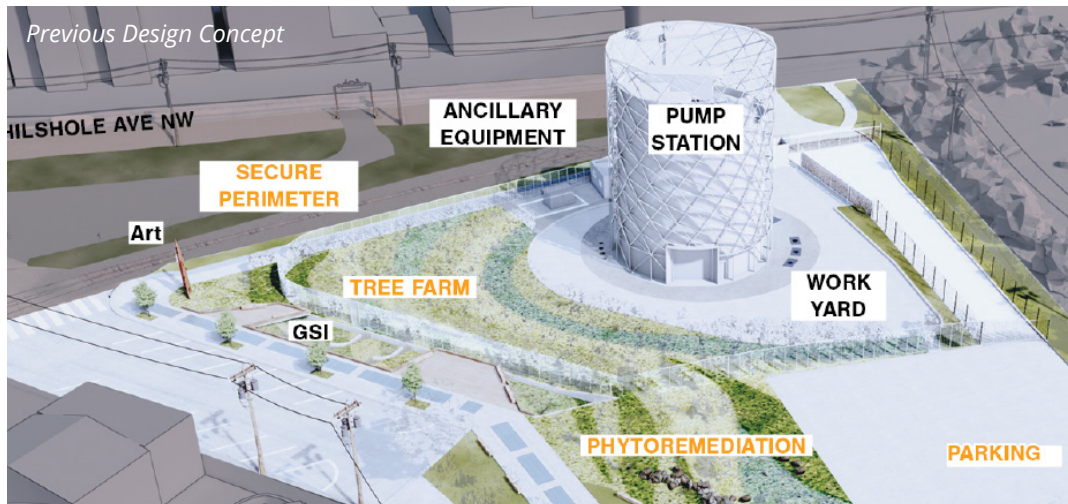
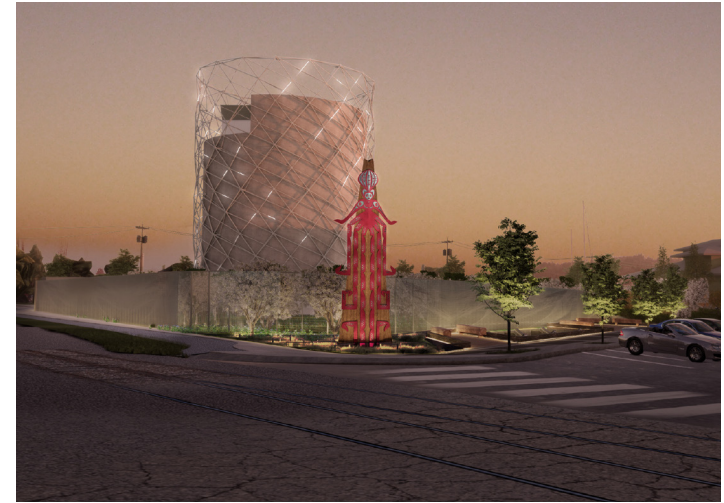
Boulders & logs





# 2020 Highlights

## Ballard Pump Station - Art & Fencing



# 2020 Highlights

## Seattle City Light -Diagonal Street Vacation

### Project Location

**PROJECT ADDRESS**

3613 4th Ave South, Seattle, WA 98134

**VACATION ADDRESS**

4101 Diagonal Ave South, Seattle, WA 98134

**APPLICANT**

Seattle City Light

**TYPE**

Capital Improvement Project and Street Vacation

**NEIGHBORHOOD PLANNING AREA**

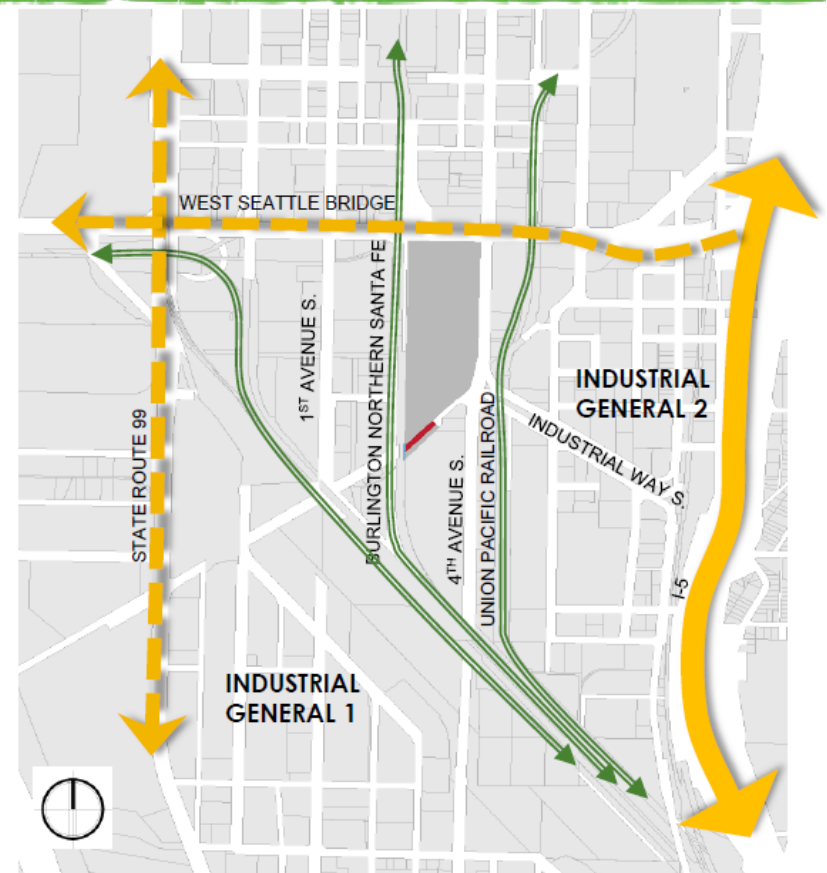
SODO

**ZONING**

Industrial General (1)

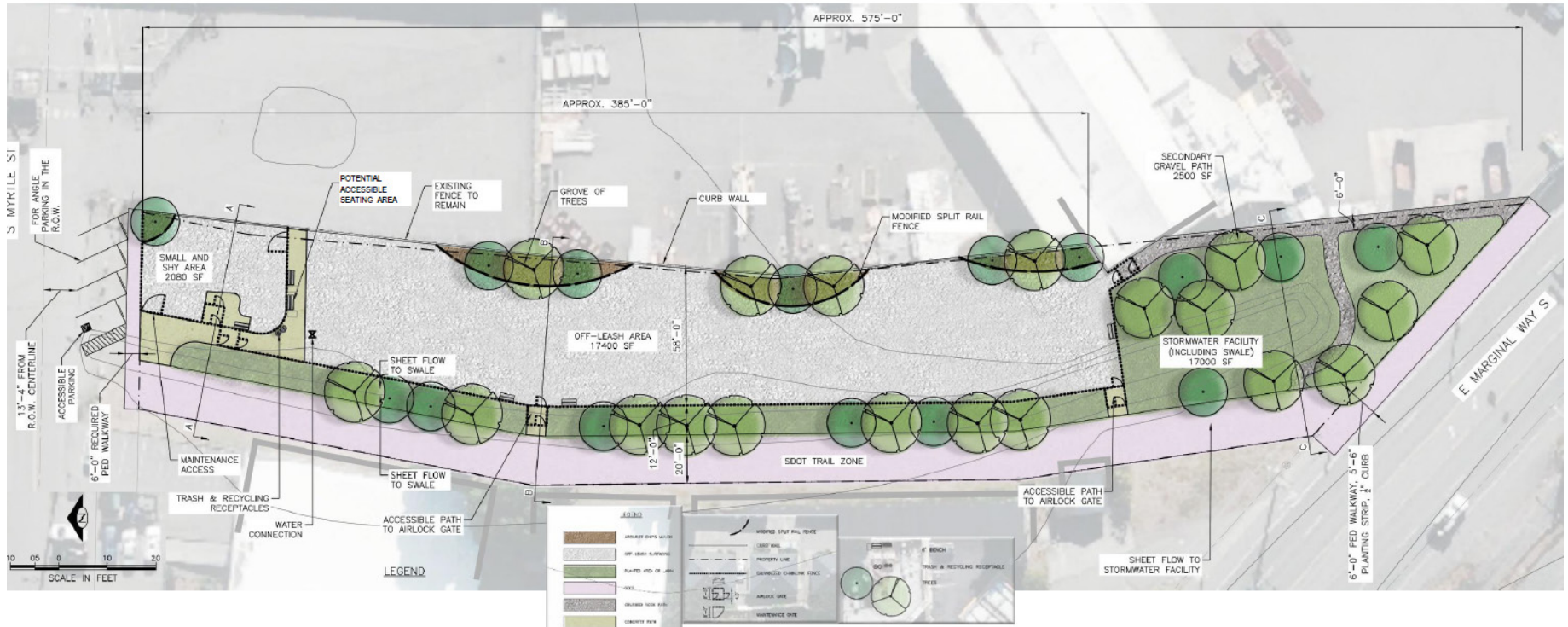
**IN EQUITY AREA**

Yes



# 2020 Highlights

## Seattle City Light -Diagonal Street Vacation



Design Concept - Flume Property



# 2020 Highlights

## Seattle City Light -Diagonal Street Vacation

### Georgetown to South Park Trail and the Flume Property

- New shared use path connecting the Georgetown and South Park communities.
- Communities share Library and community center



#### Georgetown Connection

Ellis, Albro, 13th: A walking/biking path on Ellis Ave S, S Albro Pl, and 13th Ave S



Existing: Ellis Ave S



Existing: S Albro St



Existing: 13th Ave S

#### E Marginal Way S Connection

North side: A walking/biking path or protected bike lane on the north side of E Marginal Way



Existing: E Marginal Way S

#### South Park Connection

16th Ave S: One-way protected bike lanes on both sides of 16th Ave S leading to the South Park bridge



Existing: 16th Ave S (north of South Park Bridge)

# 2020 Highlights

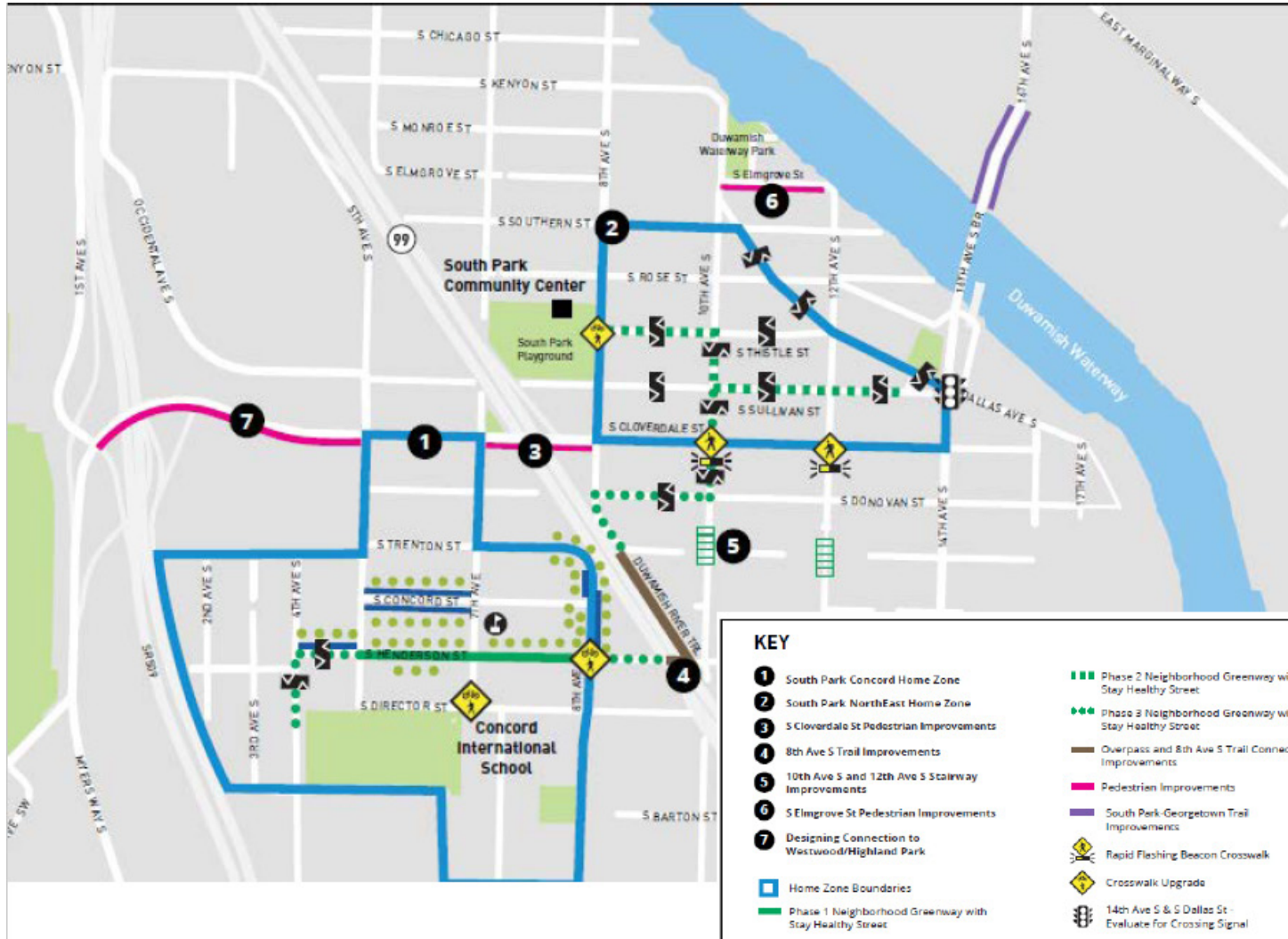
## South Park Plaza





# 2020 Highlights

## South Park Plaza - Pedestrian Safety





# 2020 Highlights

## Transition to online meeting format

### Sound Transit 3 & WSBLE

- NE 130th Light Rail Station Design Review - Ongoing
- SDC Briefing on City of Seattle Design Guidelines for light rail stations - Ongoing
- Letter on ST Remnant Parcels - December 2020
- WSBLE Station Workshops (online) - October 2020
- SDC Briefing on OPCD Station Area Planning - August 2020
- SDC Briefing on ST Architecture Standards - January 2020
- Letter on C/ID Station Area Planning - December 2019

### SR 520

- Roanoke Lid & Portage Bay Bridge endorsement letter - April 2020

### Waterfront Seattle

- Overlook Walk - **completed November 2020**
- Aquarium -Ocean Pavilion - **completed August 2020**

### Policies

- Letter on policies for renaming public facilities - July 2020

# What's ahead in 2021

## **SR 520- Roanoke Lid & Portage Bay Bridge RFP Review**

### **Sound Transit 3 & WSBLE**

- NE 130th Light Rail Station Review
- Review of select stations and guideway segments following DEIS publication
- Coordination on CoS Design Guidelines for Light Rail Stations
- Briefing on Station Area Planning

### **City Capital Projects**

- Georgetown to South Park Trail Connection
- South Park Plaza
- Yesler Terrace Pocket Park III - Final review for Yesler Terrace Vacation
- Garfield Super Block
- Fire Station 31
- Waterfront Park (Pier 58)

### **Policies:**

- Finalize Skybridge Joint Director's Rule Update

Questions?