



Tree Protections Update

Photo by John Skelton



Seattle Department of
Construction & Inspections



Seattle
Office of Sustainability
& Environment

Land Use and Neighborhoods Committee

July 14, 2021

TODAY'S PRESENTATION

UFMP Update – Update & Next Steps

Resolution 31902 - Progress Made

- Tree Protections - Public Outreach
- Tree Tracking

Next steps

UFMP UPDATE

Underway:

- Final internal review
- Finalize plan

Next Steps:

- Publish web-based plan
- Translate and print Executive Summary
- Offer Council briefing



Resolution 31902 – Progress Made

TREE PROTECTIONS – PUBLIC OUTREACH

METHODOLOGY – TWO APPROACHES

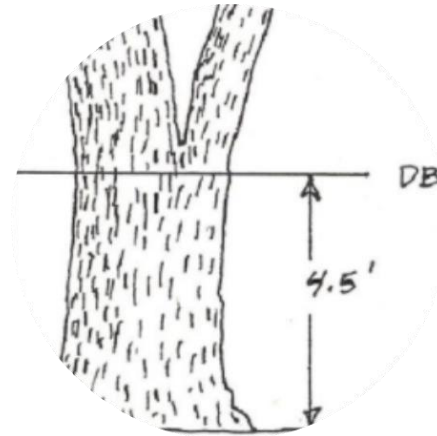
Department of Neighborhoods (DON) Community Liaisons (CLs)	Virtual Listening Sessions Six total 90-minute length
BIPOC, underrepresented groups	Other key stakeholders
Culturally appropriate engagement, in language	Primarily English

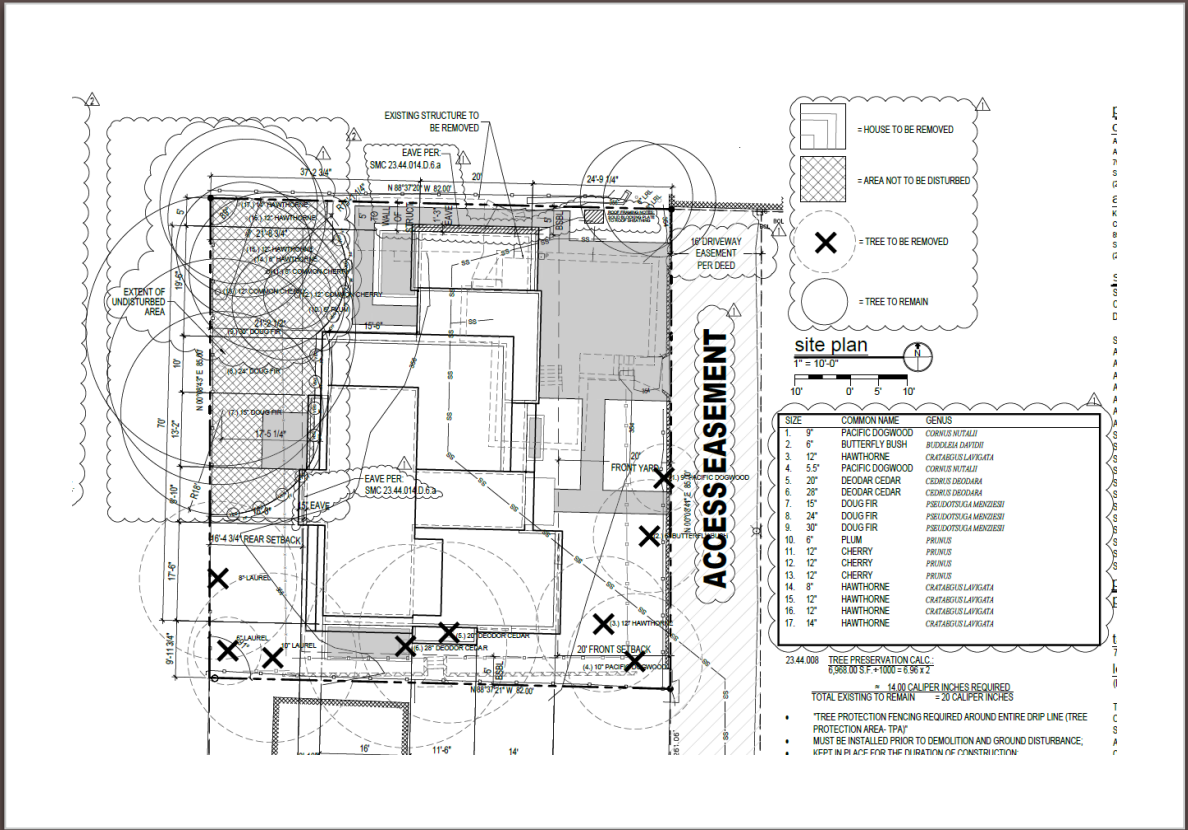
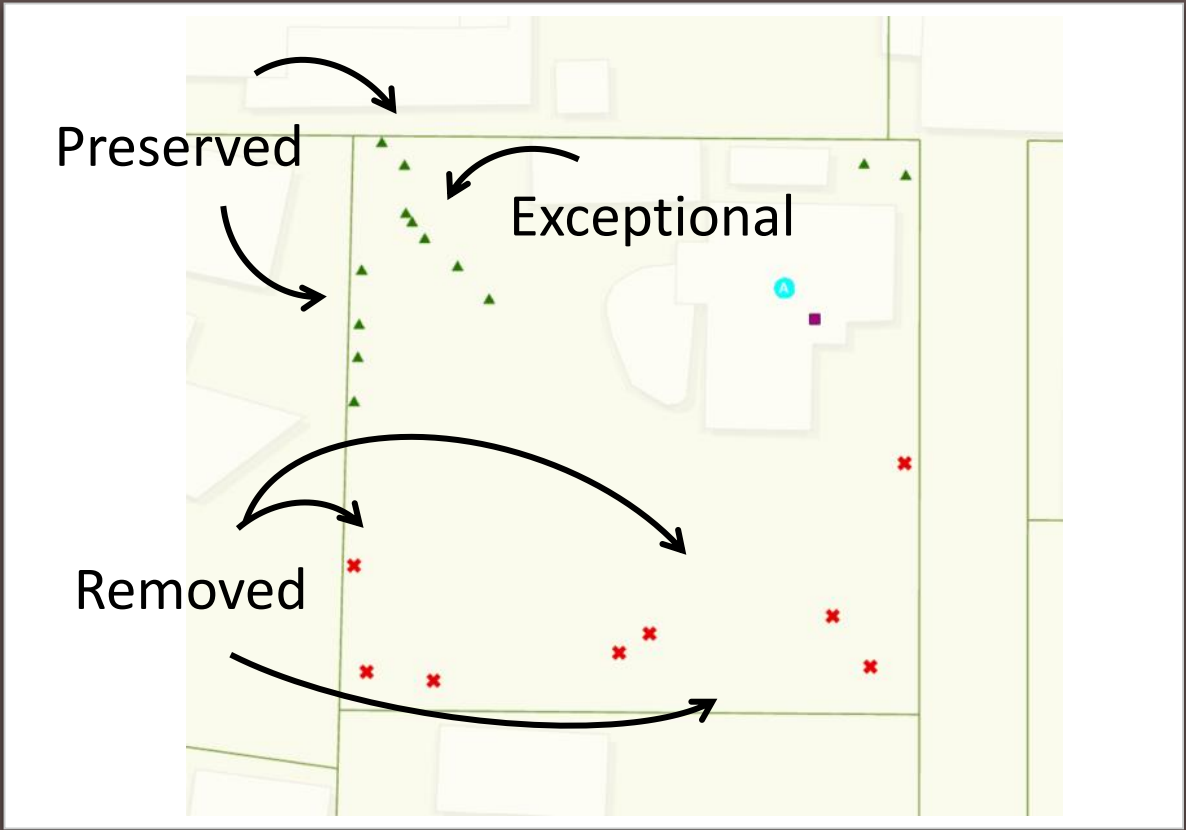
Resolution 31902 – Progress Made

TREE TRACKING – DATA COLLECTION

Data Collected SF/RSL Zones:

- Permit Number
- Tree Name - Scientific, Common
- Exceptional Trees
- Diameter at Standard Height
- Tree Status
- GIS Location
- Linkage to Other Permits
- Arborist Report

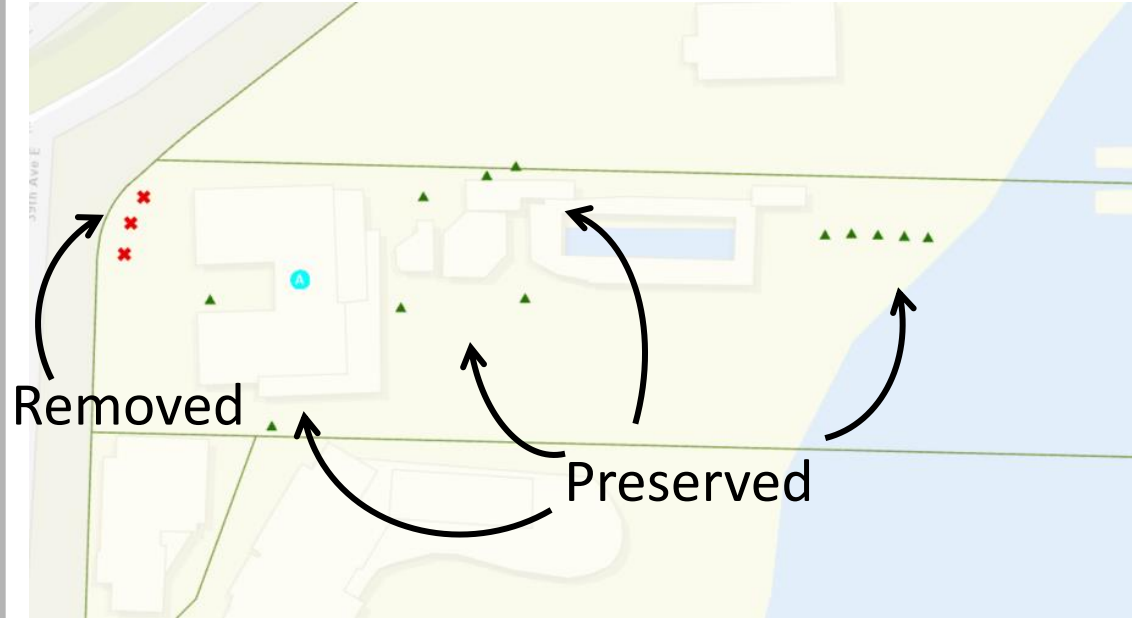




GIS Image

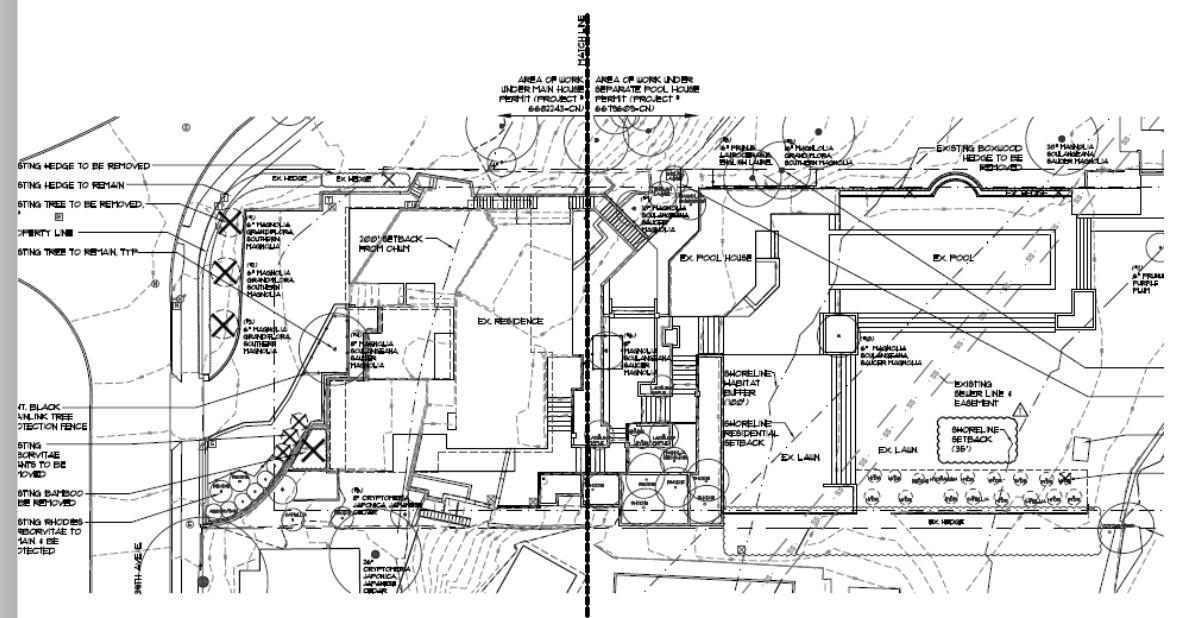
Site Plan – New detached (single family) home

EXAMPLE #1 – 6590722-CN



Removed

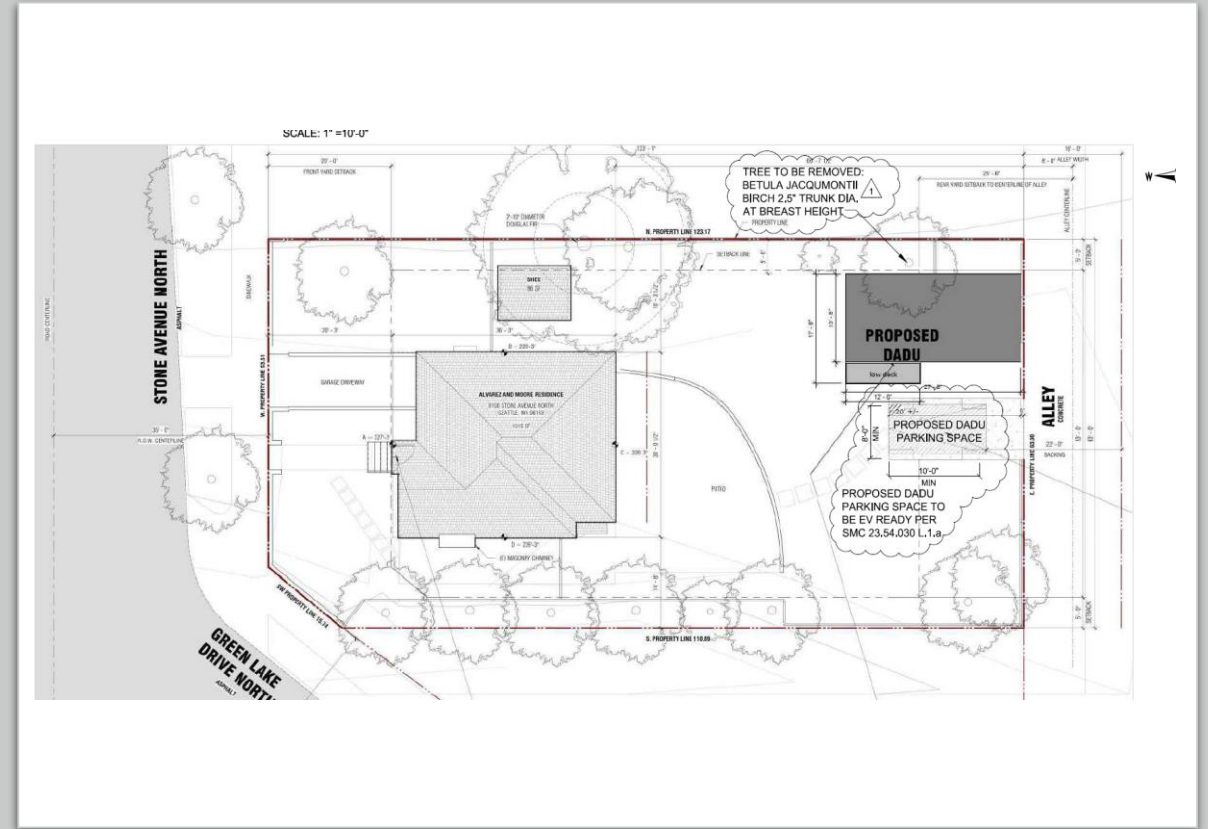
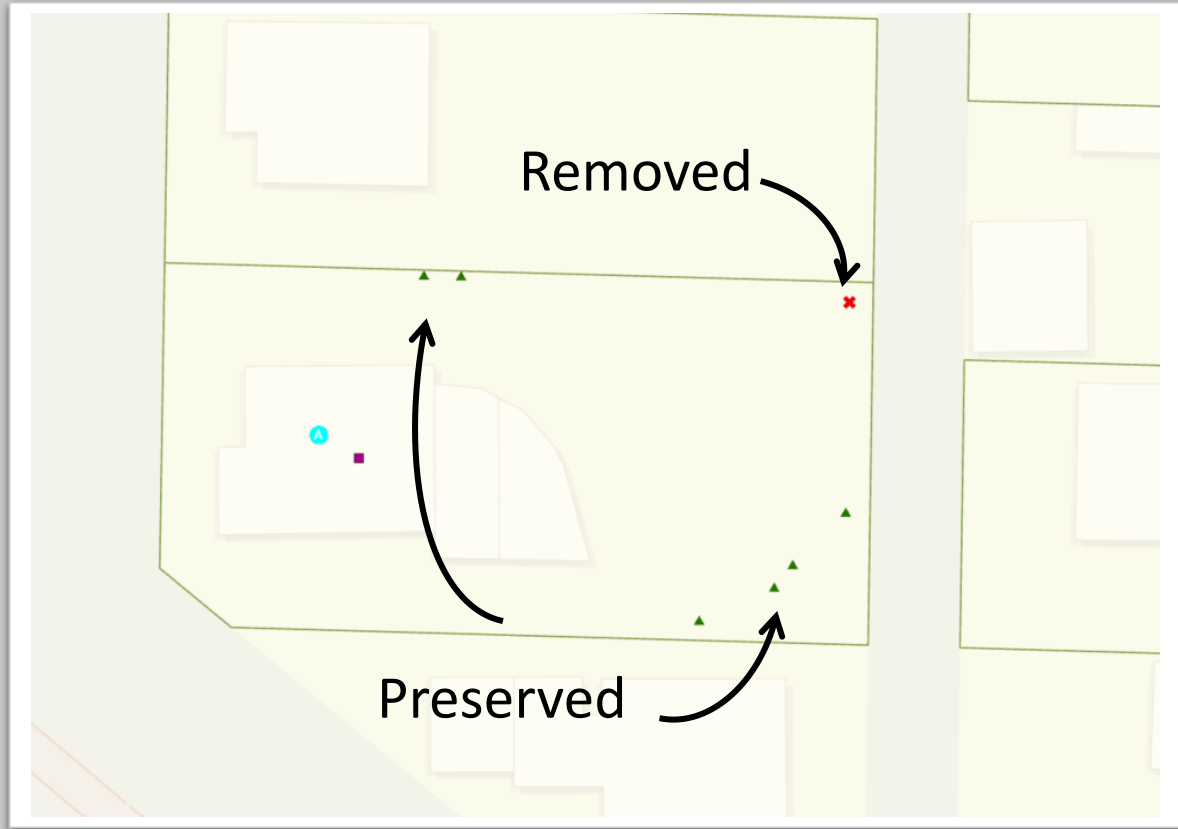
Preserved



GIS Image

Site Plan – Addition to existing detached (single-family) home with ECAs

EXAMPLE #2 – 6682243-CN



GIS Image

Site Plan – New Backyard Cottage / DADU

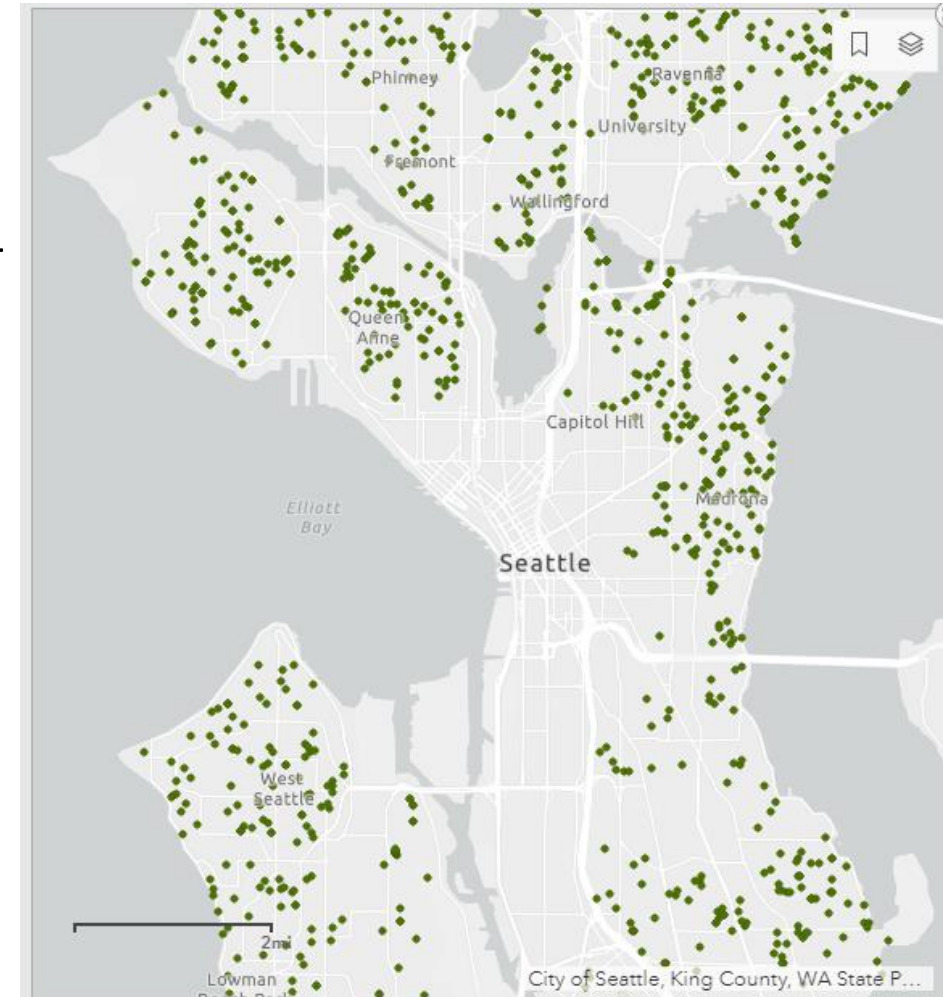
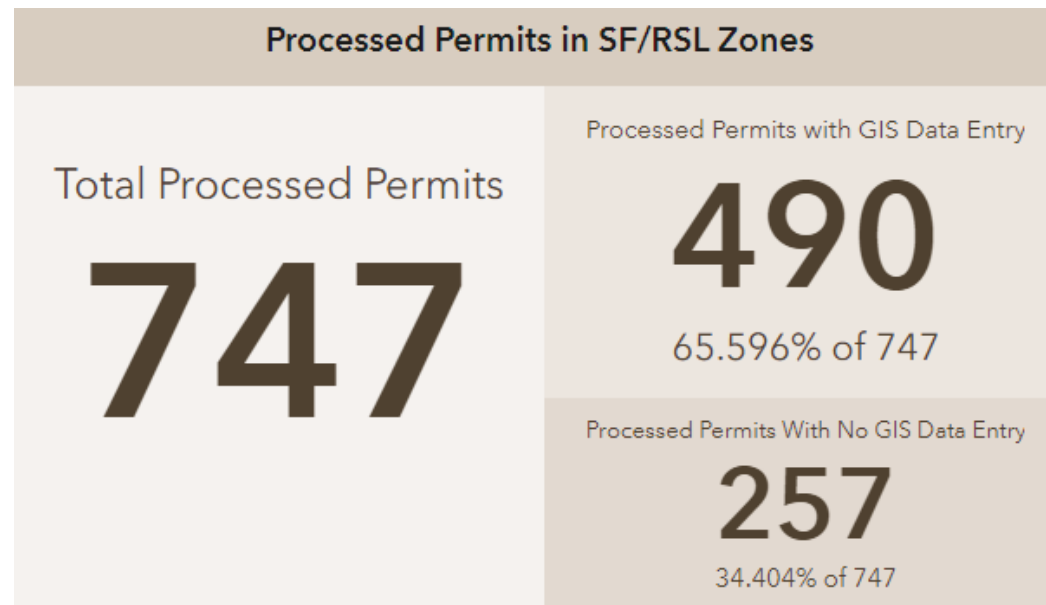
EXAMPLE #3 – 6725230-CN

Resolution 31902 – Progress Made

TREE TRACKING PROGRESS

Data Collected in Single Family Zones

- Permits from July 1, 2019 - April 23, 2020
- One GIS staff member reviewing permit data in Q1 & Q2 2021
- Moving forward: More GIS staff, expanding to other zones

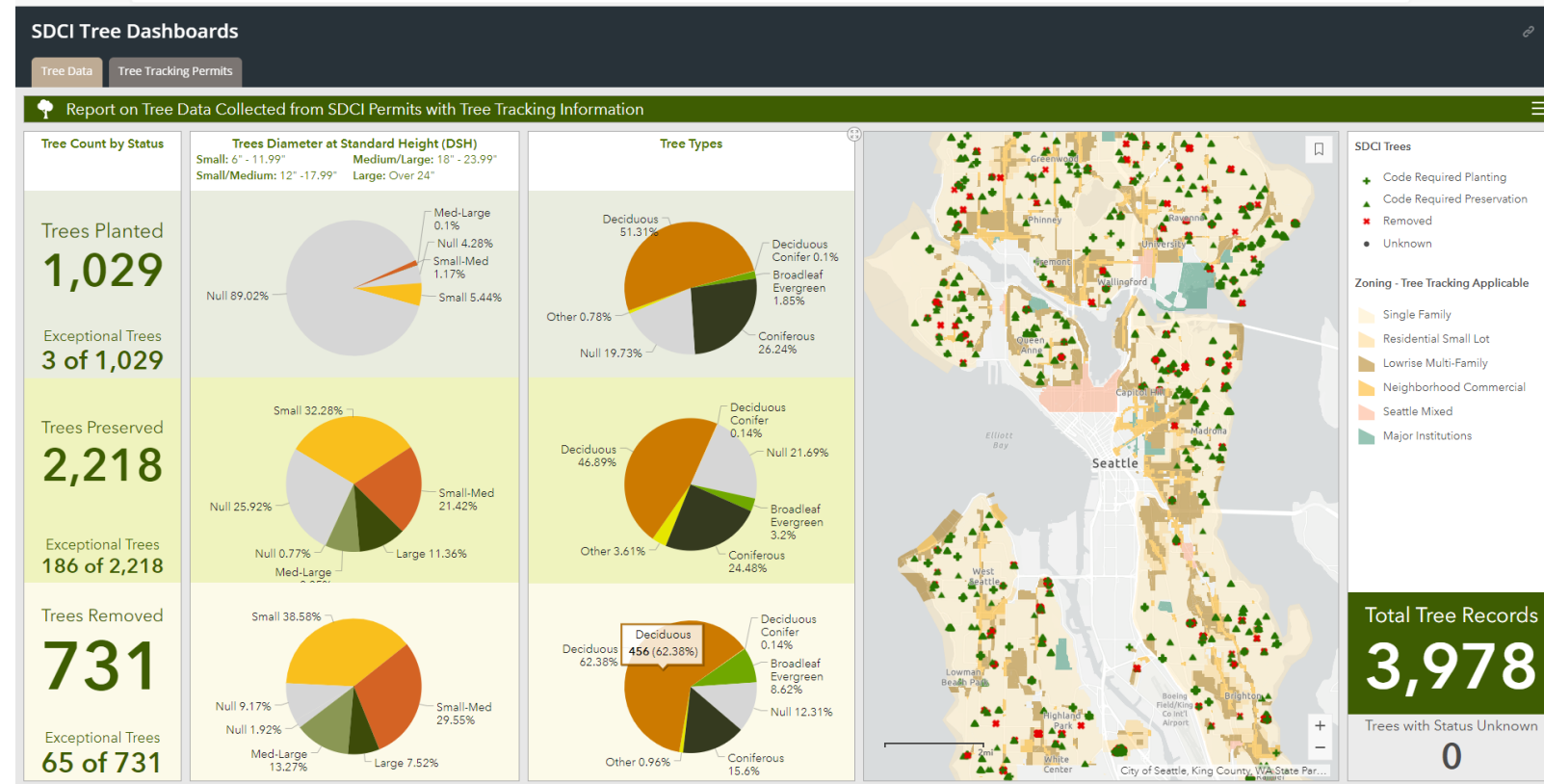


Resolution 31902 – Progress Made

TREE TRACKING DASHBOARD

Initial Data Collected

- 3,978 total trees captured
- 2,218 preservations
- 1,029 plantings
- 731 removals



Permits from July 2019 to April 2020

Resolution 31902 – Progress Made

TREE TRACKING PROJECT SCOPE EXPANSION

Additional Zones

- Lowrise
- Neighborhood Commercial
- Seattle Mixed

Environmentally Critical Areas (ECAs)

- Wetlands
- Fish and wildlife habitat conservation areas
- Geologic hazard areas
- Flood-prone areas
- Abandoned landfills



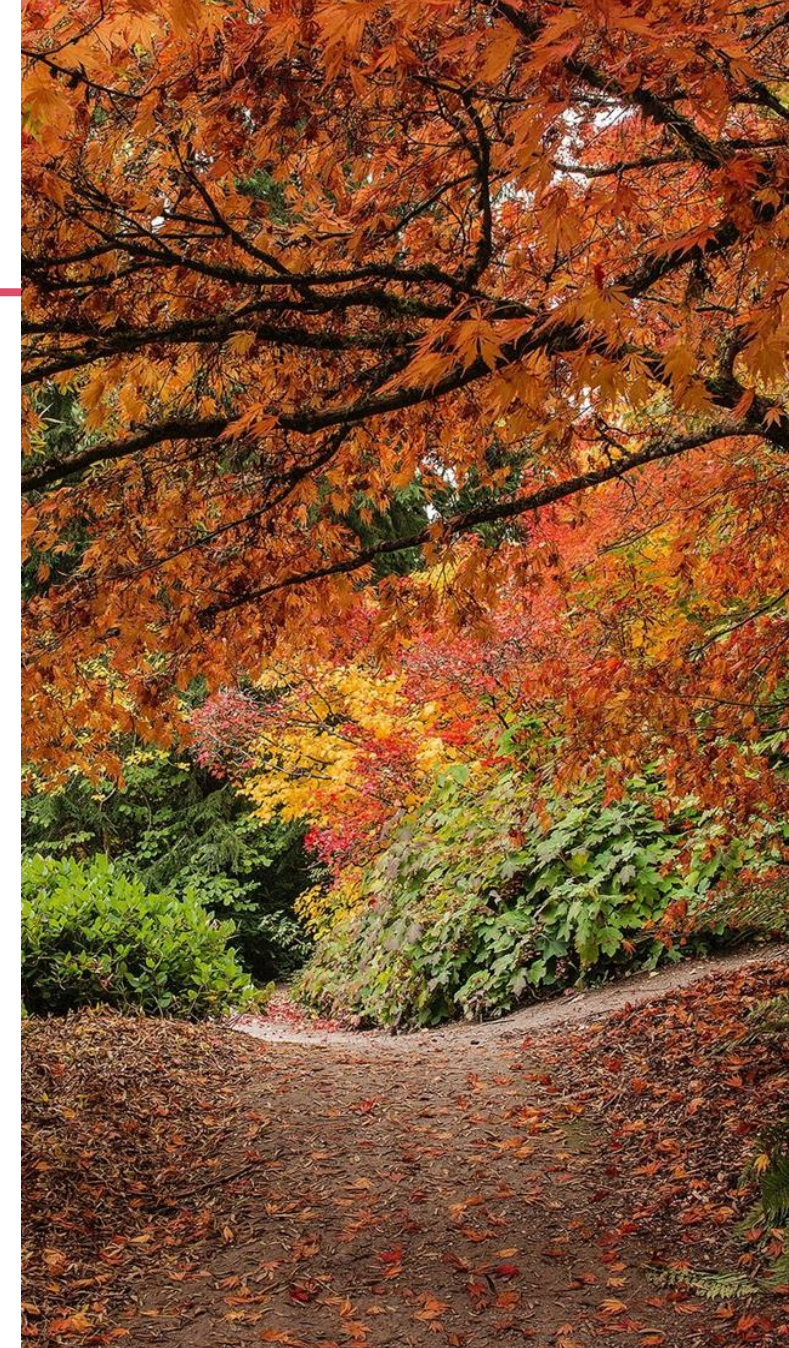
NEXT STEPS

July, August, Sept

- Public outreach, including BIPOC engagement
- Continue Racial Equity analysis

Q4

- Goal to issue SEPA decision by end of year



QUESTIONS?

Chanda Emery
chanda.emery@seattle.gov
(206) 233-2537

www.seattle.gov/sdci

Patricia Bakker
patricia.bakker@seattle.gov
(206) 684-3194

www.seattle.gov/ose

