



SEATTLE SYMPHONY

LISTEN BOLDLY





ALIREZA MOTEVASELI – IRAN

Fantasia for Santoor and Accordion



RAHIM ALHAJ – IRAQ

Letters from Iraq



ALI OSMAN – SUDAN

Afromood



TRADITIONAL — SOMALIA


"Ladaneey"



KINAN AZMEH — SYRIA
Suite for Improvisor and Orchestra



Seattle Symphony  was live.

February 8 at 7:35pm · 

We're LIVE at Music Beyond Borders! Tonight's concert is a celebration of immigration and what it has meant for our country, featuring music from Iran, Iraq, Somalia, Sudan and Syria.

Program Information → <http://bit.ly/2lswuTy>



187K Views

 Like  Comment  Buffer  Share 

   6K

Top Comments ▾

3,388 shares

2.3K Comments

“I’m an Iranian cellist. I’m so proud of you and the persons who care about people’s lives and situations around the world. You make us hopeful.” -Mo N

“This concert right at this moment is the very reason I joined Facebook so many years ago...just wow.” -Chuck H

“Thank you so much for sharing your music and heartfelt words so freely with the world. It’s such a generous and kind gift to us all and we may never fully know all the many ways in which this concert positively impacts the world.” -Jill C

COMMUNITY CONNECTIONS

TIER 1: CONCERT TICKETS

Over 60 nonprofit partners across six different sectors have access to free concert tickets.

TIER 2: DEEPER CONNECTIONS

Pre-concert workshops, residencies and other special activities tailored to partner's needs and goals

TIER 3: SPECIAL PROJECTS

Creative collaborations with community partners



“Mayor, county exec declare ‘state of emergency’ over homelessness”

- Seattle Times, November 2015



Simple Gifts: Our Commitment to Homelessness



Today the Seattle Symphony launched Simple Gifts, a multi-year initiative that will share the inspiration of music to spark joy, alleviate trauma and connect individuals with their creativity through artistic projects, residencies and access to performances.

SIMPLE GIFTS PARTNERS

- Accelerator YMCA
- Catholic Housing Services of Western WA
 - Aloha Inn
 - Dorothy Day House
 - Frederick Ozanam House
- Compass Housing Alliance
- FareStart
- Jubilee Women's Center
- Mary's Place
- Mockingbird Society
- Path with Art
- Plymouth Housing Group
- Prospect Enrichment Preschool
- ROOTS Young Adult Shelter
- New Futures
- Seattle Education Access
- Street Youth Ministries
- Wellspring Family Services
- Youth in Focus
- Youth Care

SIMPLE GIFTS

CREATIVE COMMUNITY PROJECTS

In-depth creative partnerships that give people experiencing homelessness the tools to express themselves through music and art-making

STRATEGIC RESIDENCIES

Bringing music making and creativity to our community partners

COMMUNITY SERVICE

Musicians, staff and board volunteering together to support the needs of our community partners

RAISING AWARENESS

Leveraging our communications and social media to increase community consciousness of the crisis



RAISING AWARENESS

OUR AUDIENCES: PROGRAM BOOK

Simple Gifts feature articles on Beyond the Stage and Encore programs; Simple Gifts partner spotlight in Encore

NEW AUDIENCES

Partnership with Plymouth Housing Group luncheon

PRESENTATIONS

League of American Orchestras conference, Seattle Public Library Create Change event

RADIO & PRINT INTERVIEWS

Classical KING FM, A Tempo on WWFM Philadelphia Strings Magazine, Seattle Times, The Stranger and more!



COMMUNITY SERVICE

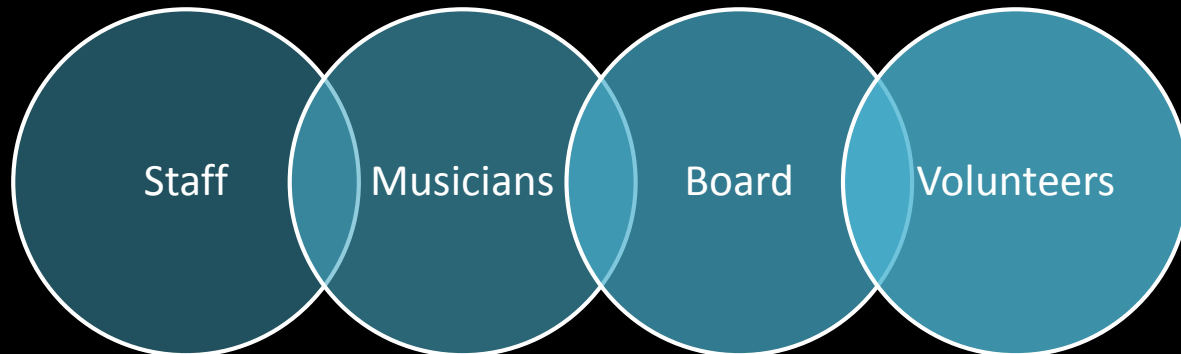
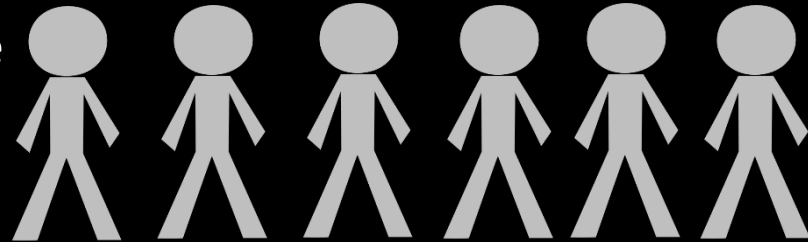
Nov. 4: Musician performances at Plymouth Housing Group open mic

Dec. 8: Holiday Caroling

Jan. 17: Meal Service at Plymouth Housing Group

Feb. 3: Emmanuel Ax performance at Youth Care

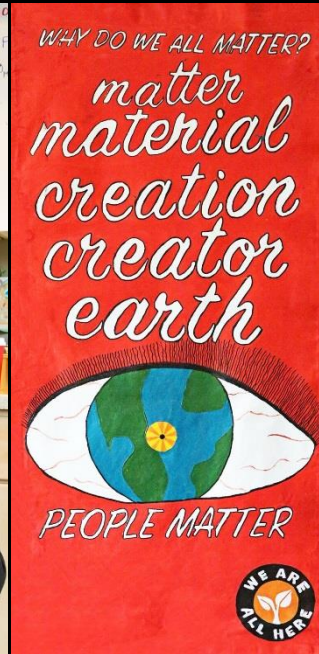
This season we have served over **150 people** through service projects



CREATIVE PROJECTS & RESIDENCIES



All of Us Belong
Feb. 2 & Feb. 4, 2017



We Are All Here
March 8, 2017



Lullaby Project
May 13, 2017

ALL OF US BELONG: LAUNCH



ALL OF US BELONG: WORKSHOPS

WAYS TO TELL A VISUAL STORY:

1. ILLUSTRATE YOUR CHOSEN MEMORY.
2. CREATE A SYMBOL THAT REPRESENTS YOUR EXPERIENCE.
3. REDRAW (TRACE) YOUR FACE WITH A CERTAIN EMOTION.
4. CREATE ABSTRACT ART THAT REPRESENTS YOUR EMOTION.
5. DECORATE A KEY PHRASE FROM YOUR STORY.

A THOUGHTFUL ARTIST

DOES:

ASK QUESTIONS

LISTEN

Try new things

Go outside his/her

DOESN'T

BELITTLE THEIR OWN ART

A RESPECTFUL COLLABORATOR

DOES:

ASKS OPINIONS

listen to honest constructive feedback

DOESN'T:

Belittle Others Opinions

ALL OF US BELONG: WORKSHOPS



ALL OF US BELONG: REHEARSAL



ALL OF US BELONG: PERFORMANCE







VETERANS
FOR THE
HONORABLE
SUPPORT

at the college
BRUSH
Daily
where we all
BELONG

got into the
WE

we have reserved you
A SEAT

GOOD
MELTER
CLOTHING
KNOWLEDGE
KINDNESS
LOVE
HAPPINESS
TRUST

PEACE SYMBOL
POSSIBLE
TOGETHER

WHY DO WE ALL MATTER
matter
material
creation
creator
earth
PEOPLE MATTER

Remove
THE VEIL
that blocks
THE LIGHT

TO

A HUMAN
PROTESTER

I have signed the petition
TO COLLECT SIGNATURES
FROM THE ST...
I would like to help
PEOPLE MATTER

Sidera
SPORTS
OPEN FOR
LUNCH

**The Seattle Symphony
Unleashes the Power of Music,
Brings People Together,
and Lifts the Human Spirit**