

Exhibit D

Seattle Aquarium Ocean Pavilion

SCHEMATIC DESIGN
ELEMENTS

JANUARY, 2018




SEATTLE AQUARIUM

LMN

Thinc™

ARCHITECTURE



ARCHITECTURAL OVERVIEW

“INSPIRING CONSERVATION OF OUR MARINE ENVIRONMENT”

Seattle Aquarium mission

The Seattle Aquarium is a conservation organization that has played a significant role in the cultural and educational life of Seattle since its opening in 1977. In addition to live animal habitats and interpretive exhibits, the Seattle Aquarium's marine conservation focus can be felt beyond their facilities, and directly engages the Seattle community and Puget Sound region through research, education, advocacy and outreach.

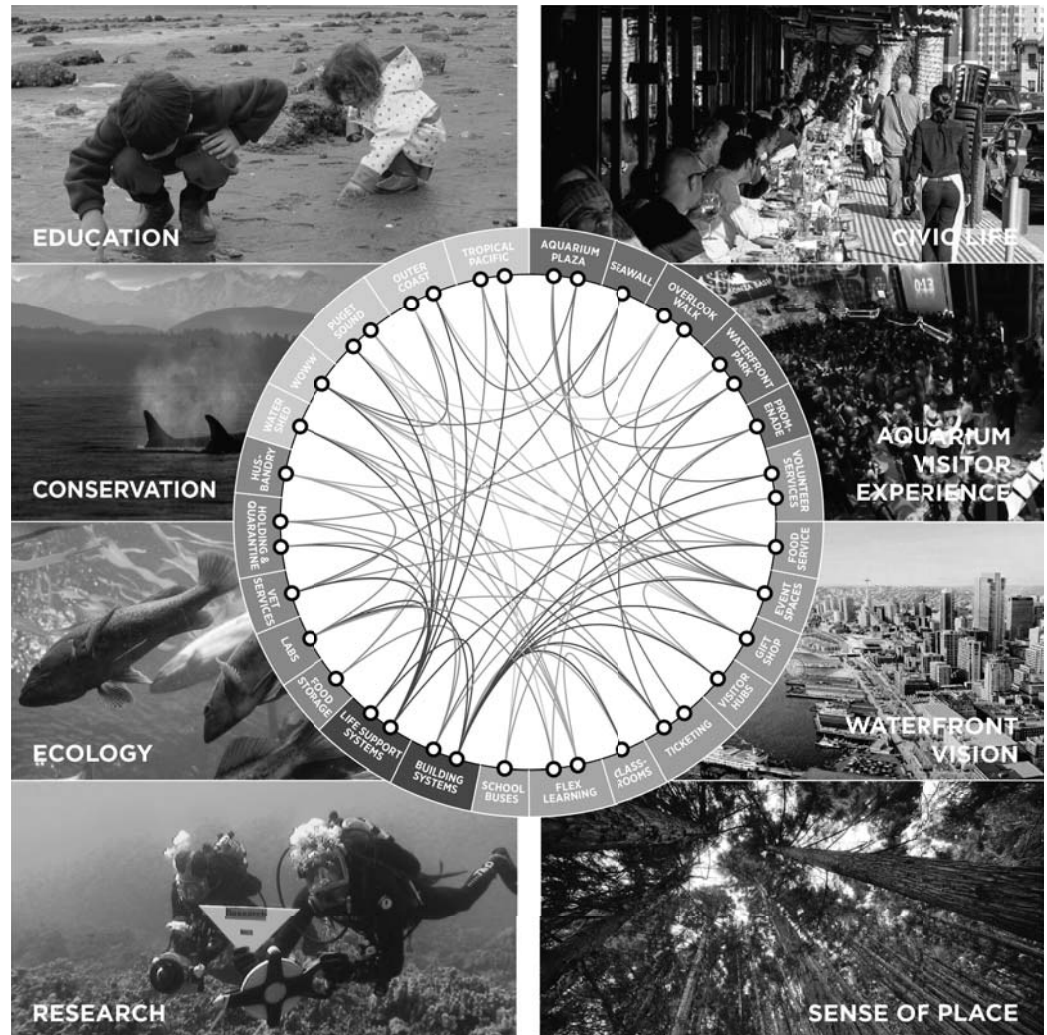
The Aquarium facilities are owned by the City of Seattle and managed by the nonprofit Seattle Aquarium Society. Annual increases in attendance, a growing regional and international interest in ocean health, the dynamic growth of Seattle, and the need to address aging infrastructure have contributed to strategic planning for the renovation of the Seattle Aquarium's existing facilities, and a major expansion within the context of Seattle's Central Waterfront redevelopment.

A new Ocean Pavilion will house an immersive experience that focuses on the greater Pacific Ocean and sets the context for an ocean ethic, extending the framework of “community” to include the marine environment. The new facility will allow the Aquarium to focus on global stories like climate change, ocean acidification and the relationship between human welfare

and the ocean, while connecting these stories to our local ecosystem, the waterfront and our urban environment. These stories will be rooted in the habitats of the Indo-Pacific region, and the diverse tropical species in the Coral Triangle. Through these exhibits the Ocean Pavilion will highlight conservation and research efforts in the region and their relationship to the work of the Aquarium in Puget Sound and the Salish Sea.

While developing the architectural and interpretive design, the LMN/ Thinc team worked closely with the City of Seattle Office of the Waterfront and their design team to coordinate the development of the Ocean Pavilion with the new Waterfront Promenade, Overlook Walk, and Aquarium Plaza. The complex network of players collaborated effectively to merge all of the design ideas into a unified approach for the Aquarium and the Waterfront.

The new Ocean Pavilion will sit at the intersection of Seattle's dense, rapidly changing downtown and the Salish Sea. This seam between the city and the marine environment provides a unique opportunity to highlight the ocean ethic, and the meaningful connections between human welfare and the ocean environment.



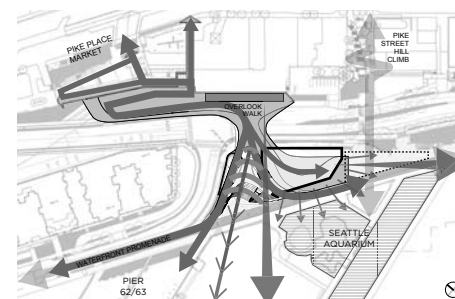
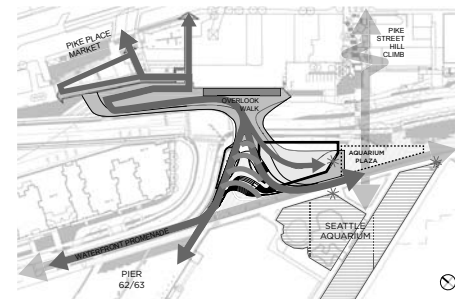
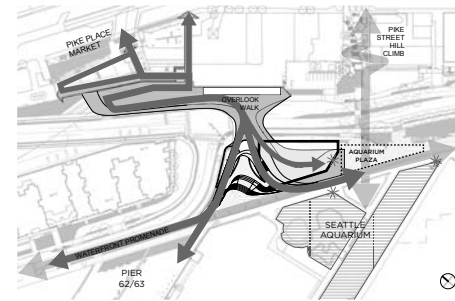
THE OCEAN PAVILION SITE

This site of the Ocean Pavilion is at the terminus of the future mile-long pedestrian promenade, and the network of major civic open spaces planned along the waterfront. It is the intersection of the pedestrian linkages between Pike Place Market and downtown, with the waterfront and the Salish Sea. Its unique location on the edge of Puget Sound allows it to look outward beyond Elliott Bay toward the Pacific Ocean.

The site will be the signature experience in the urban framework and will have a meaningful place in our community. Seattle's choice to place the Seattle Aquarium Ocean Pavilion, a facility focused on conservation and our relationship to the natural environment, in this location, at the heart of our major

civic space, is an important statement of values for our city. This could be compared to the location of the monuments on the Mall in D.C., or the placement of the Opera House in Paris, both of which speak to the values and identity of their respective cities.

Maintaining the connectivity at this hub with linkages to the Pike Place Market, the waterfront promenade, the existing Aquarium piers, Elliott Bay, the Salish Sea, and the heart of downtown, is a complicated puzzle that requires thoughtful integration of the parts of the Aquarium into the urban fabric of the waterfront, in a way that connects the flow of people from downtown to the waterfront, and connects our community around critical environmental attitudes and an ocean ethic.



The siting of the Ocean Pavilion helps to re-organize and enhance the function and clarity of the urban connections from the city to the waterfront. An "Aquarium Plaza" is developed south of the building, becoming the linchpin between the Ocean Pavilion and the existing Aquarium piers.

An "Amphitheater Plaza" to the north of the Ocean Pavilion establishes a new public connection to the water and organizes the circulation paths from the Market to the waterfront, with direct connections to the Overlook Walk and the elevated open space on the roof of the Ocean Pavilion.

The roof of the Ocean Pavilion is the first in a series of public spaces and viewpoints that terrace down to the amphitheater plaza with views to Elliott Bay, the harbor, the waterfront promenade, and the downtown skyline. This provides a mixing ground for Aquarium visitors and the general public to interact and connect along the waterfront. These spaces are not to dissimilar to balconies in a theater with views to events that could take place on the promenade, on Piers 62/63, or out on the water.



ARCHITECTURAL IDENTITY

The Ocean Pavilion will be nestled next to the realigned Elliott Way to the east and the new Amphitheater Plaza to the north. The waterfront promenade will run to the west of the Ocean Pavilion, separating it from the existing Aquarium at Piers 59 & 60 and the new Aquarium Plaza will be located to the south.

The south facade of the Ocean Pavilion will be an important intersection of the collection of parts that integrate the building with the surrounding context. The south facade will be aligned with the Pike Street Hill Climb and composed of a series of transparent curtain walls that allow views of the activities within the building. The lower level provides views to the ticketing, visitor services, gift shop and main entrance, which is located off of Aquarium Plaza.

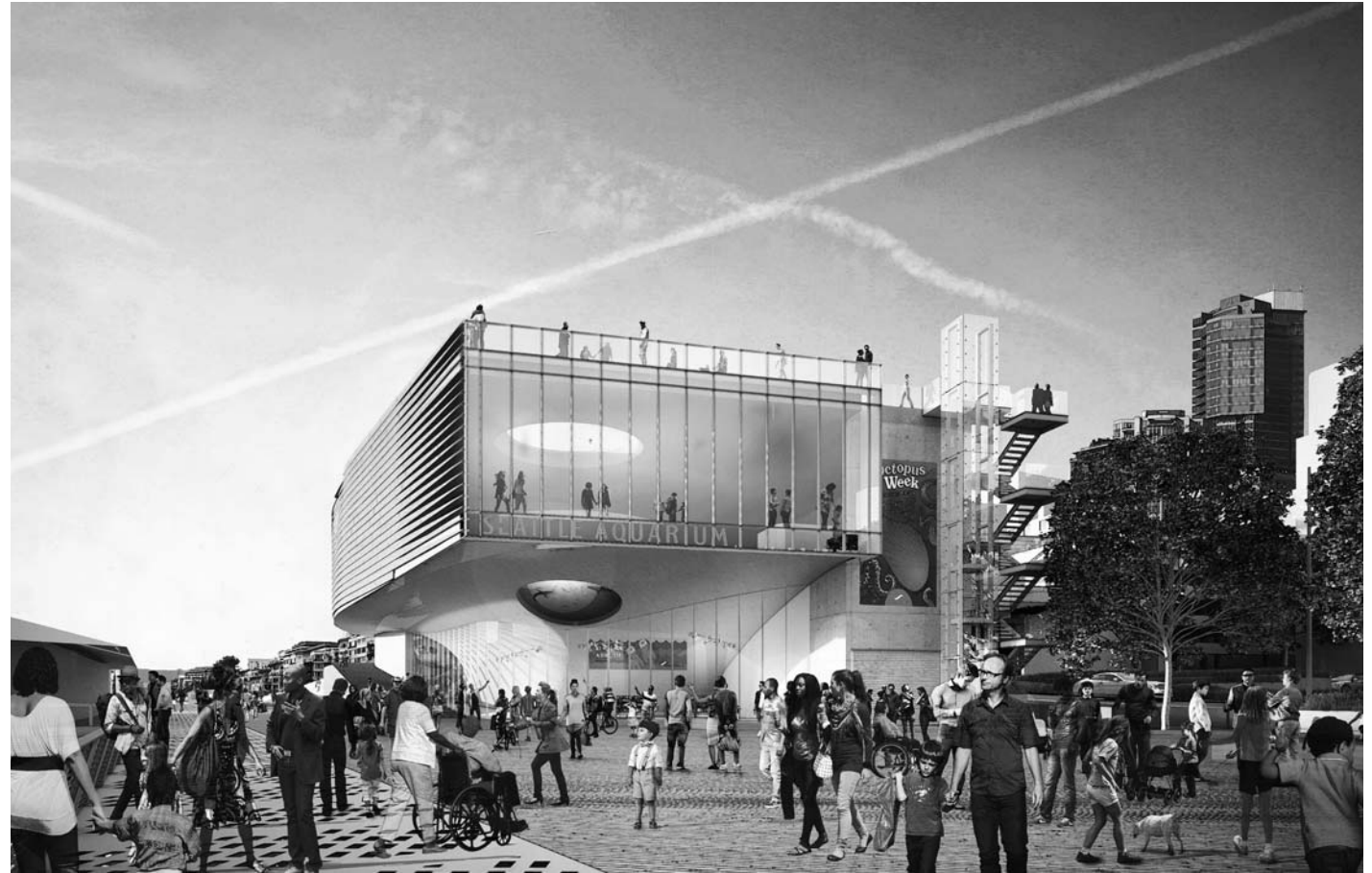


ARCHITECTURAL IDENTITY, CONTINUED

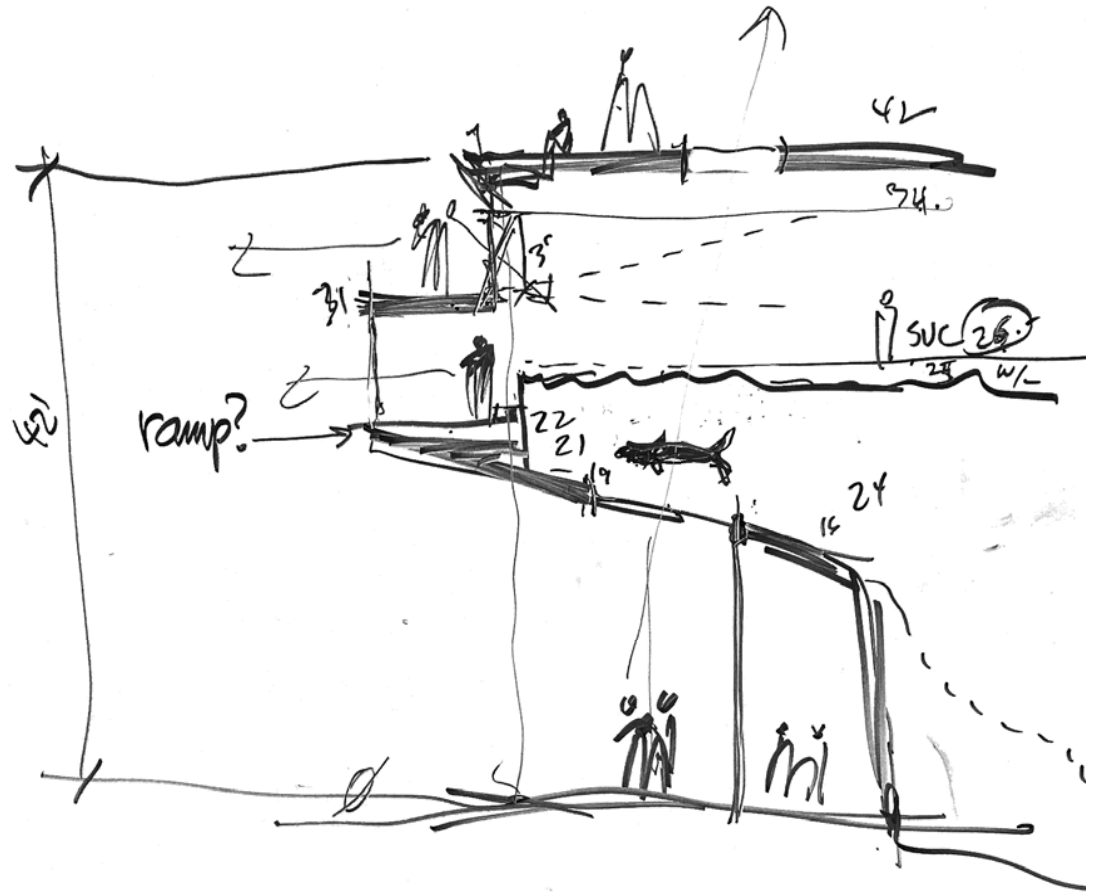
On the upper level there is a large space at the end of the exhibit sequence where visitors can look back out toward the city and the working waterfront. This space is located at the top of the large shark and ray exhibit. The building overhangs at the upper level on the south and west facades, creating a porch at the main entry to the Pavilion. The overhang creates natural weather protection, and provides the opportunity to walk underneath the shark and ray exhibit. In particular it provides a first glimpse into the environment within the Aquarium, with a view from outside the building up through an acrylic oculus into the shark and ray exhibit, and through a skylight beyond, with views to the occupied roof above. This “sharkulus” (shark-oculus) will be an important icon for the Aquarium, provide clear identification for the building, and offer photography (selfie) moments for the public and Aquarium guests.

The cladding on the west facade of the Ocean Pavilion will tie the building back into the terracing of the amphitheater plaza, so that the Pavilion and landforms read as a connected element. The cladding will pull apart in areas to expose windows while maintaining an integrated sun-shading device that can manage direct sunlight and control glare inside the exhibit spaces.

The east facade of the Ocean Pavilion contains many of the mechanical and support spaces, and will relate back to the urban fabric of the city. Transparency will be provided at key locations to highlight the inner workings of the Aquarium in the spirit of the “working waterfront,” and provide daylight to the support spaces and animal husbandry areas within the building.

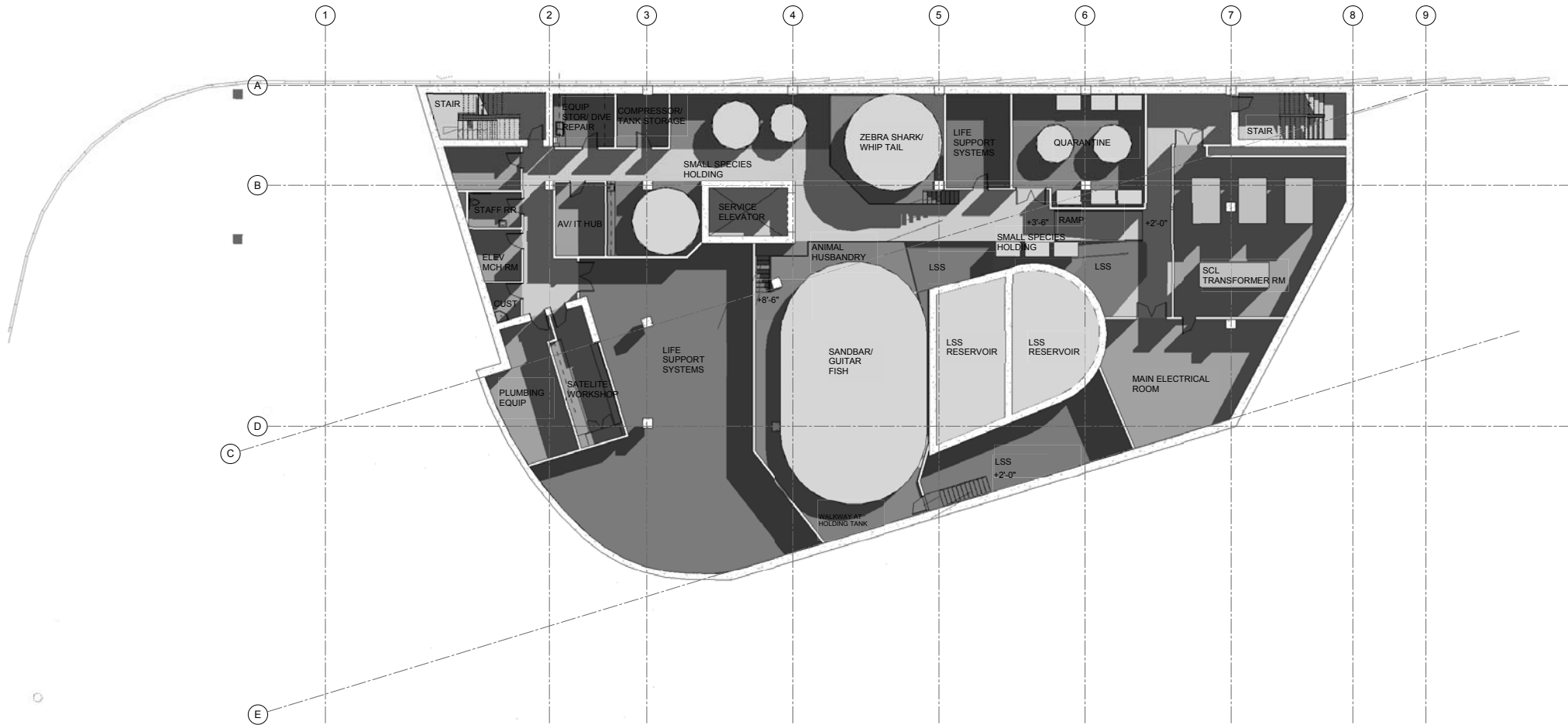


ARCHITECTURE & EXHIBIT SYNERGY



ARCHITECTURAL PLANS

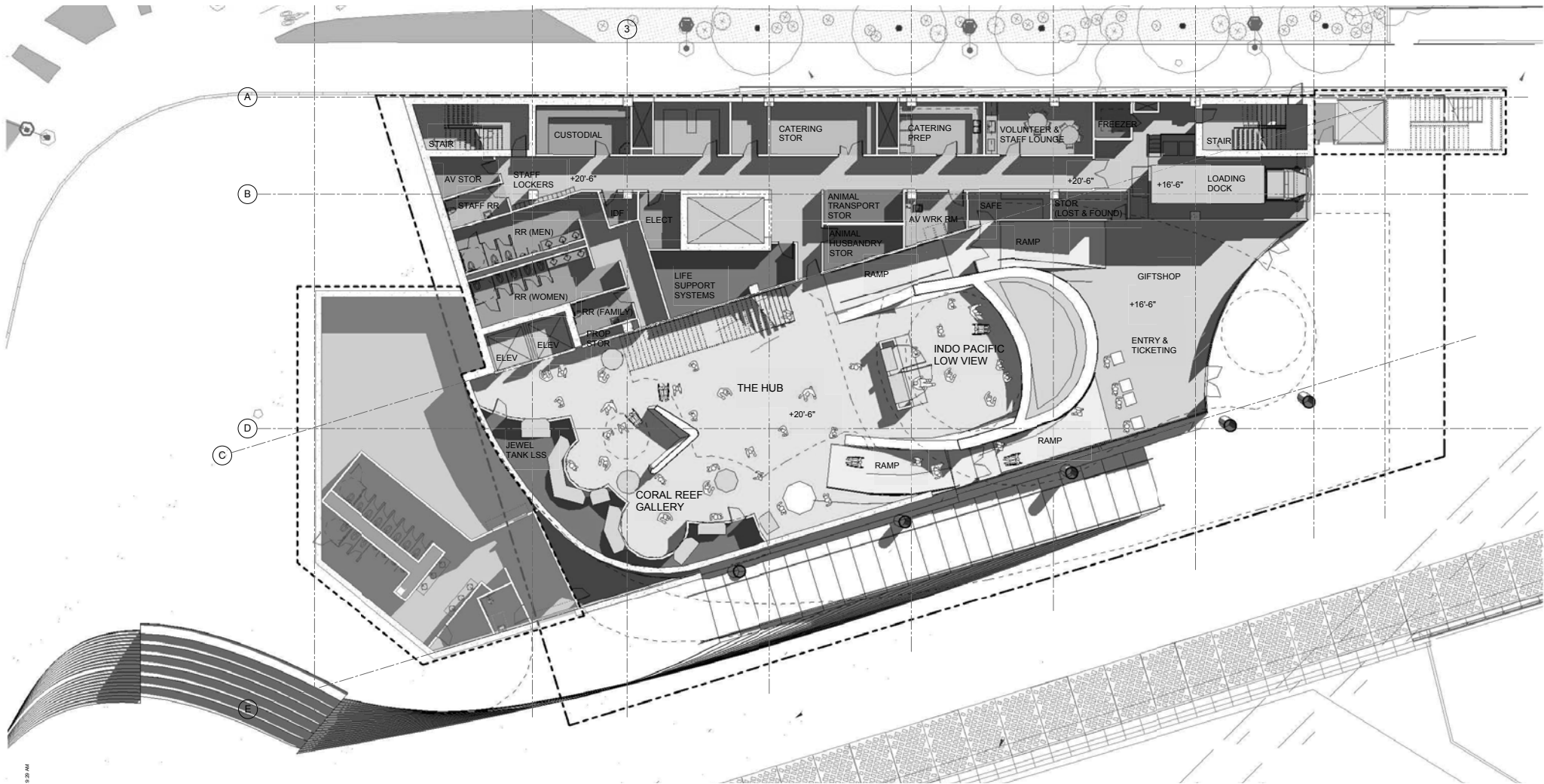
Basement Floor Plan



8.18 AM

ARCHITECTURAL PLANS

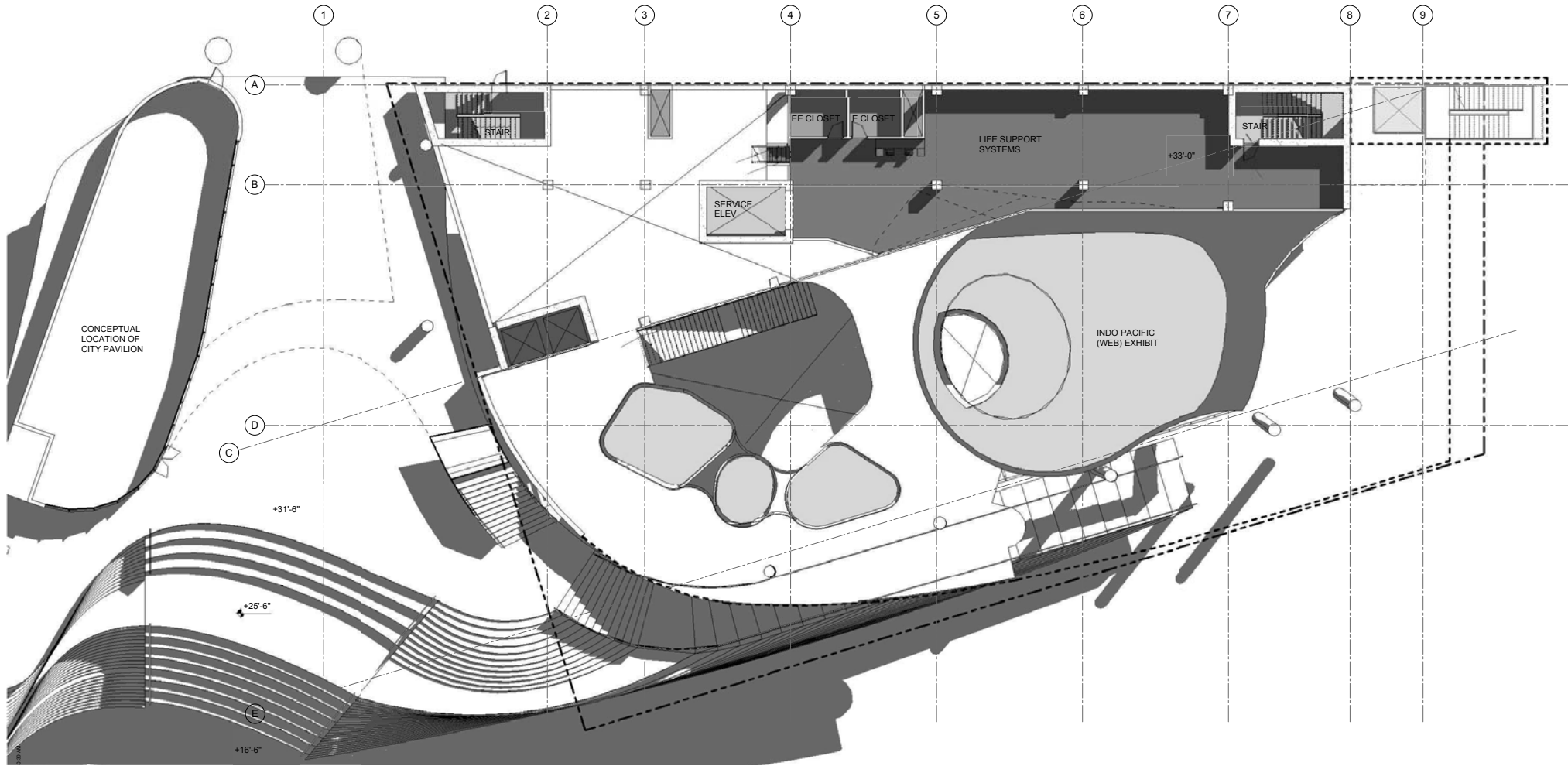
Level 1 Floor Plan



9.28 AM

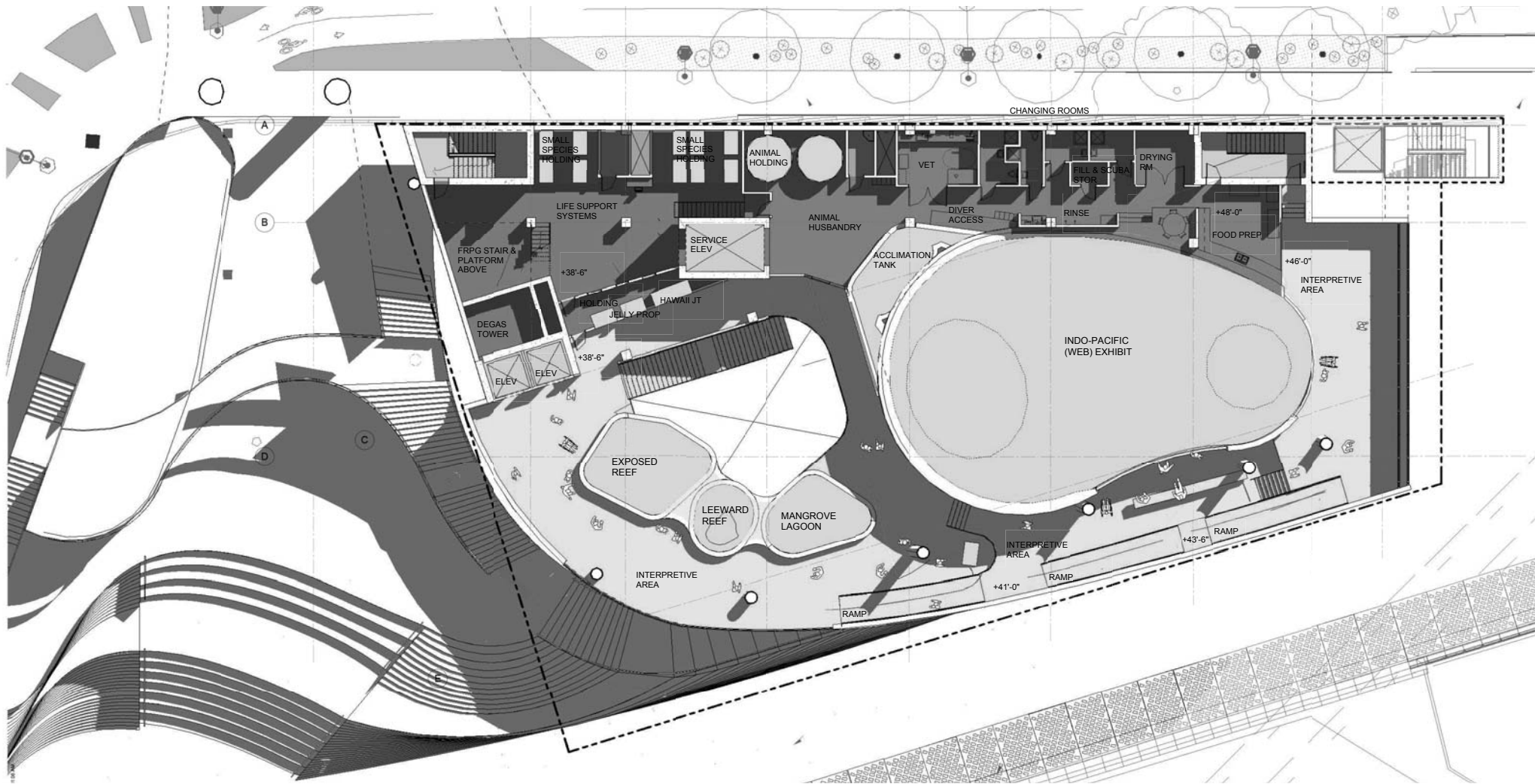
ARCHITECTURAL PLANS

Level 2 Floor Plan



ARCHITECTURAL PLANS

Level 3 Floor Plan



ARCHITECTURAL PLANS

Roof Plan

