




Smith Cove Park Playfield Conversion

1450 23rd Ave W, Seattle, WA 98199



DRAFT BOUNDARY MAP

 Project Boundary (3.38 Acres)

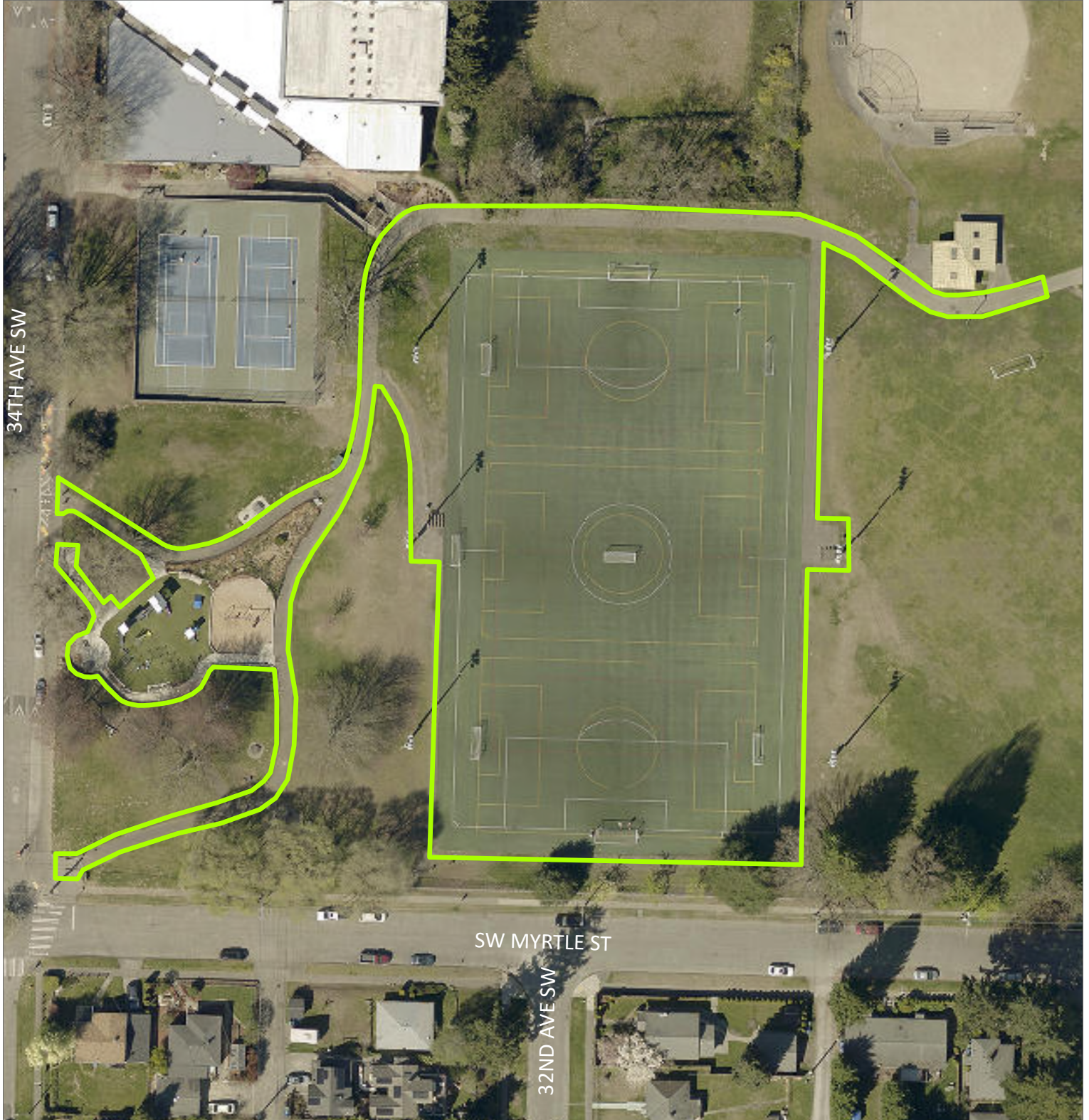


0 90 180 US Feet

©2024, CITY OF SEATTLE
All rights reserved.

No warranties of any sort, including accuracy, fitness or merchantability, accompany this product.

Basemap source:
City of Seattle, 2021
Map date: Apr 01, 2024



DRAFT BOUNDARY MAP

 Project Boundary (2.57 Acres)



0 35 70 140 US Feet

©2024, CITY OF SEATTLE
All rights reserved.

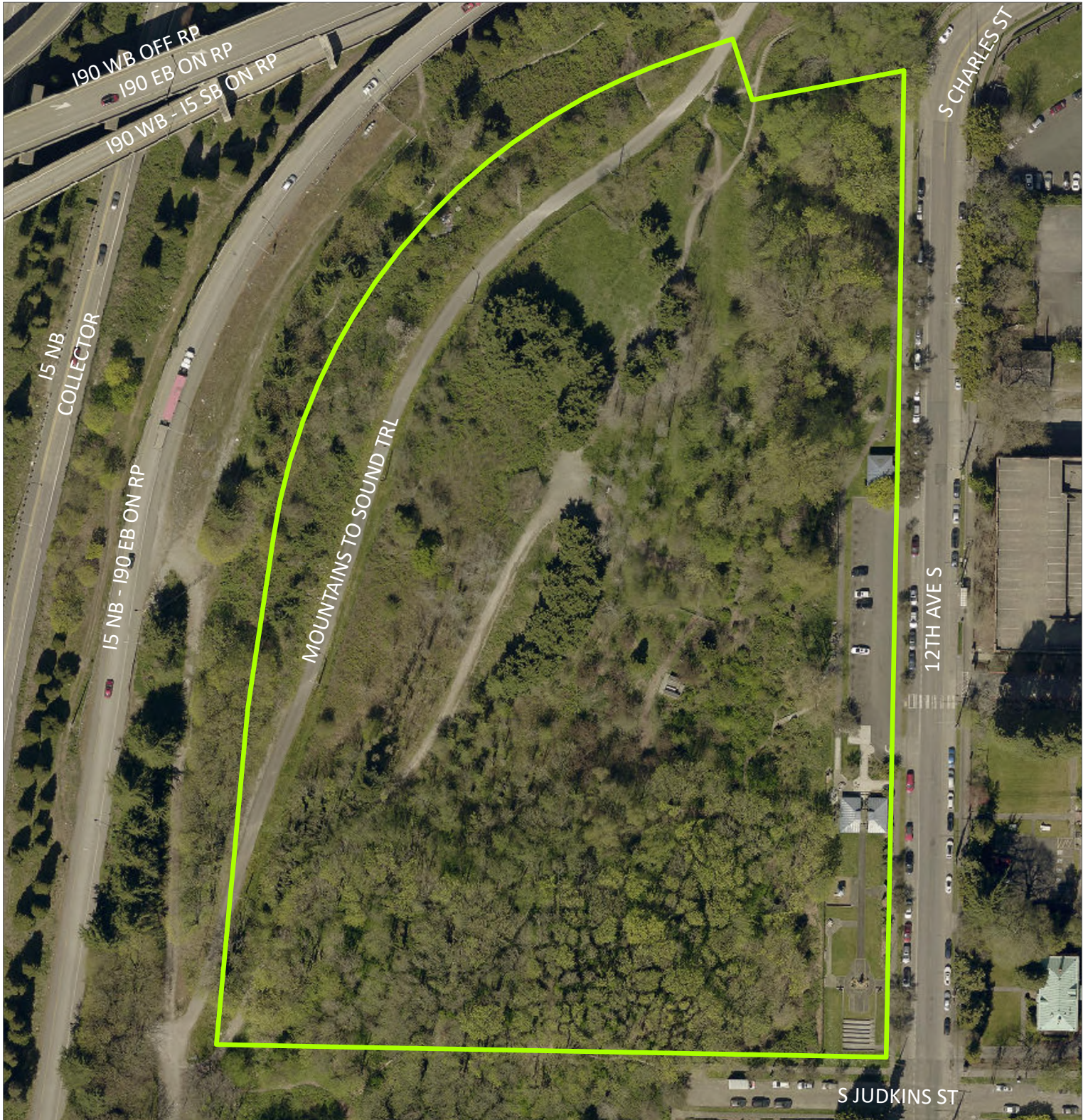
No warranties of any sort, including accuracy, fitness or merchantability, accompany this product.

Basemap source:
City of Seattle, 2021
Map date: Apr 01, 2024



Dr. Jose Rizal Park

1007 12th Ave S, Seattle, WA 98144



DRAFT BOUNDARY MAP

 LWCF Boundary (9.57 Acres)



©2024, CITY OF SEATTLE
All rights reserved.

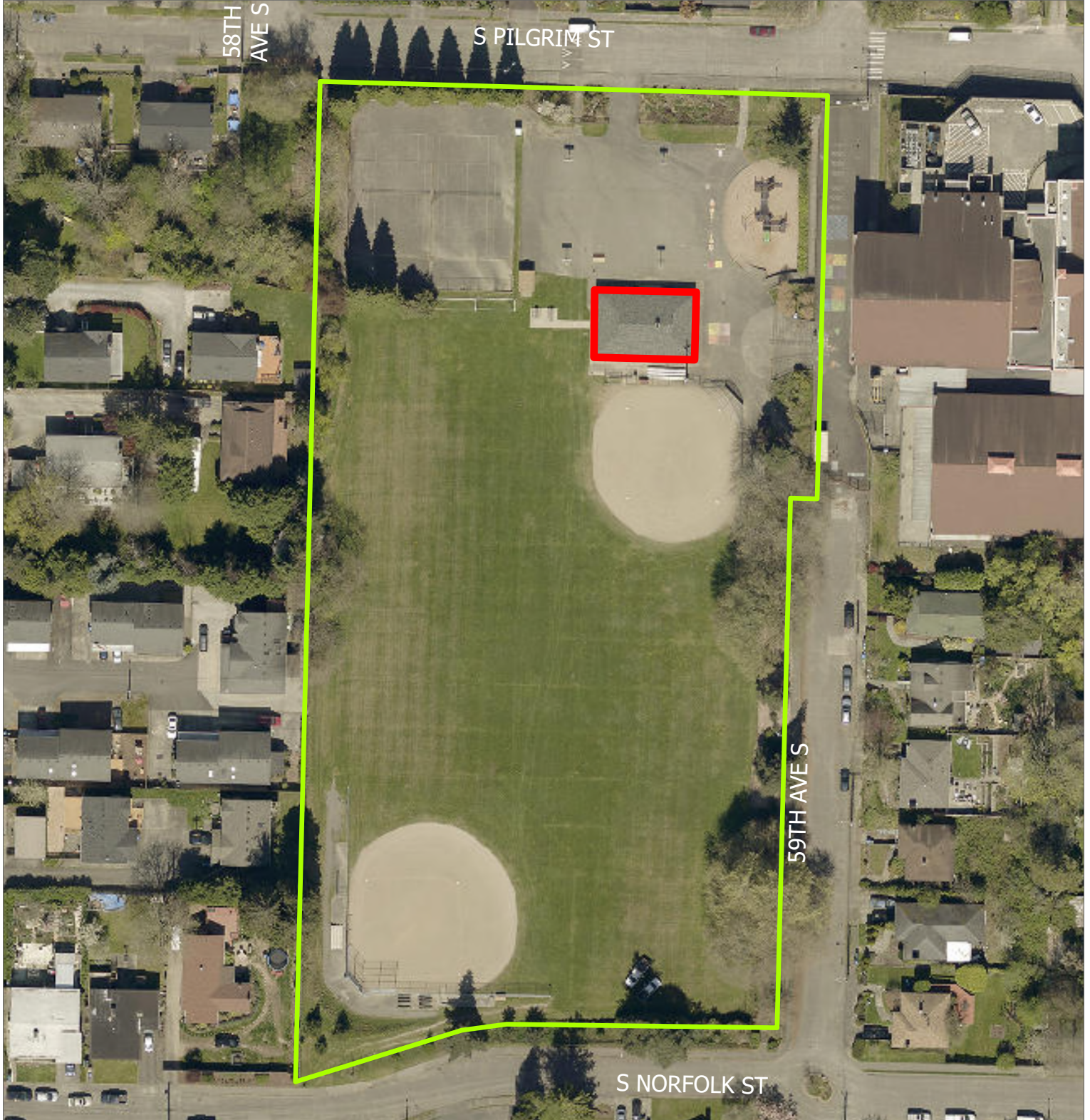
No warranties of any sort, including accuracy, fitness or merchantability, accompany this product.

Basemap source:
City of Seattle, 2021
Map date: Apr 01, 2024



Fred Hutchinson Playfield Renovation

5801 S Pilgrim St, Seattle, WA 98118



DRAFT BOUNDARY MAP

Project Boundary (4.38 Acres)

Compatible Use Recreation Facility*

*area of compatible use recreation facility total 0.06 acres and are included within the Project Boundary 4.38 acres.



0 75 150 US Feet

©2024, CITY OF SEATTLE
All rights reserved.

No warranties of any sort, including accuracy, fitness or merchantability, accompany this product.

Basemap source:
City of Seattle, 2021
Map date: Apr 01, 2024

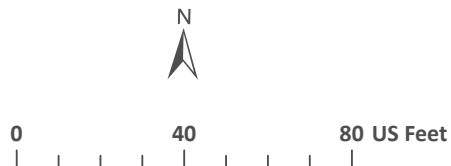
Lake City Floodplain Park Development

NE 125th ST and 24th Ave NE, Seattle, WA 98125



 Project Boundary (1.06 Acres)

DRAFT BOUNDARY MAP



©2024, CITY OF SEATTLE
All rights reserved.

No warranties of any sort, including accuracy, fitness or merchantability, accompany this product.

Basemap source:
City of Seattle, 2021
Map date: Apr 01, 2024