

Titicaed Creek Parcel Acceptance

*Civil Rights, Utilities, Economic
Development & Arts
Committee*

Seattle City Council

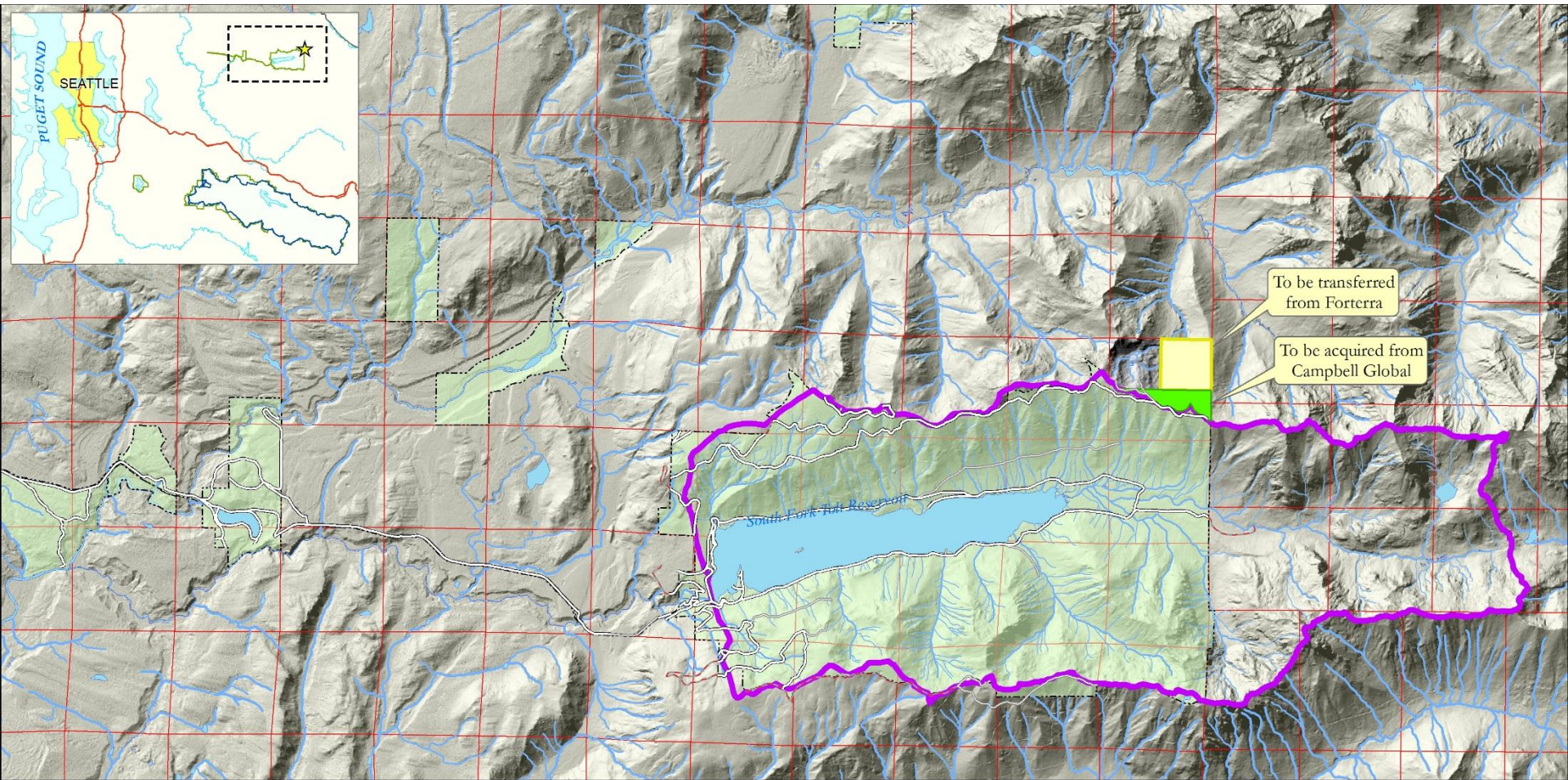
September 16, 2016

Seattle
 Public
Utilities



Ordinance

- Authorizes SPU to accept transfer of 155 acre parcel in NF Tolt River Watershed
- Authorizes SPU to acquire adjacent 100 acre parcel in the future



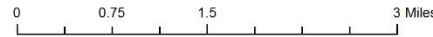
To be transferred
from Forterra

To be acquired from
Campbell Global

South Fork Tolt Reservoir

Att 3 - Map, SPU North Fork Tolt River Property Acceptance

Township 26N Range 9S Section 24
and the
South Fork Tolt Municipal Watershed



Transfer Property

- 155 acres
- Located in North Fork Tolt River Watershed
- Old growth forest
- Critical habitat for several ESA-listed species
- No cost to SPU
- No maintenance (no roads or facilities)



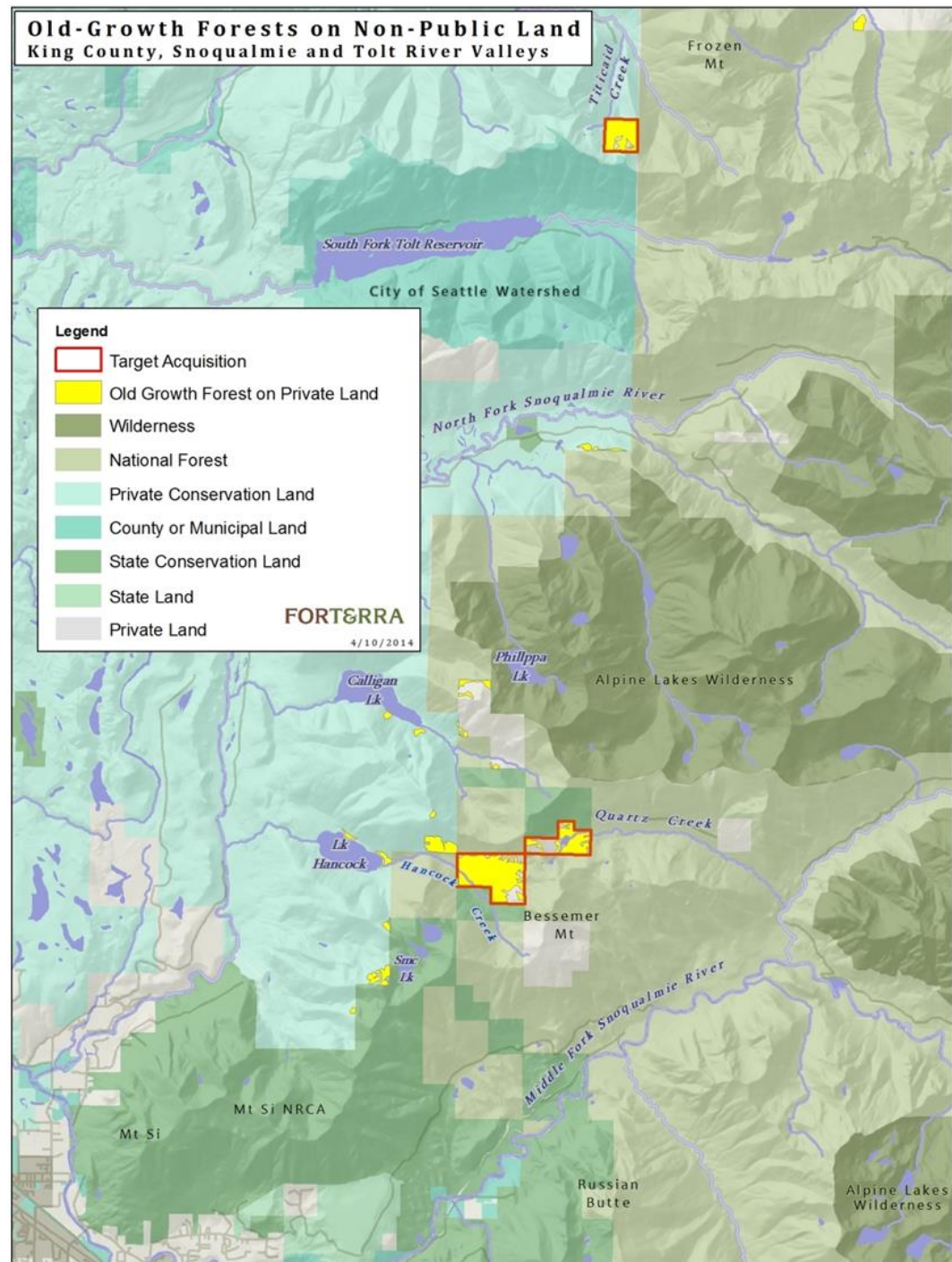
A photograph of a large, moss-covered tree trunk in a forest. The tree trunk is the central focus, showing a rough, textured bark with patches of green moss. The background is filled with other trees and foliage, creating a dense forest scene. The lighting is soft, suggesting an overcast day.

Transfer Agreement

- Federal funding to protect endangered species
- Transfer from Forterra to SPU
- Conservation easement to be held by WDNR, prohibits:
 - Timber harvesting
 - Development

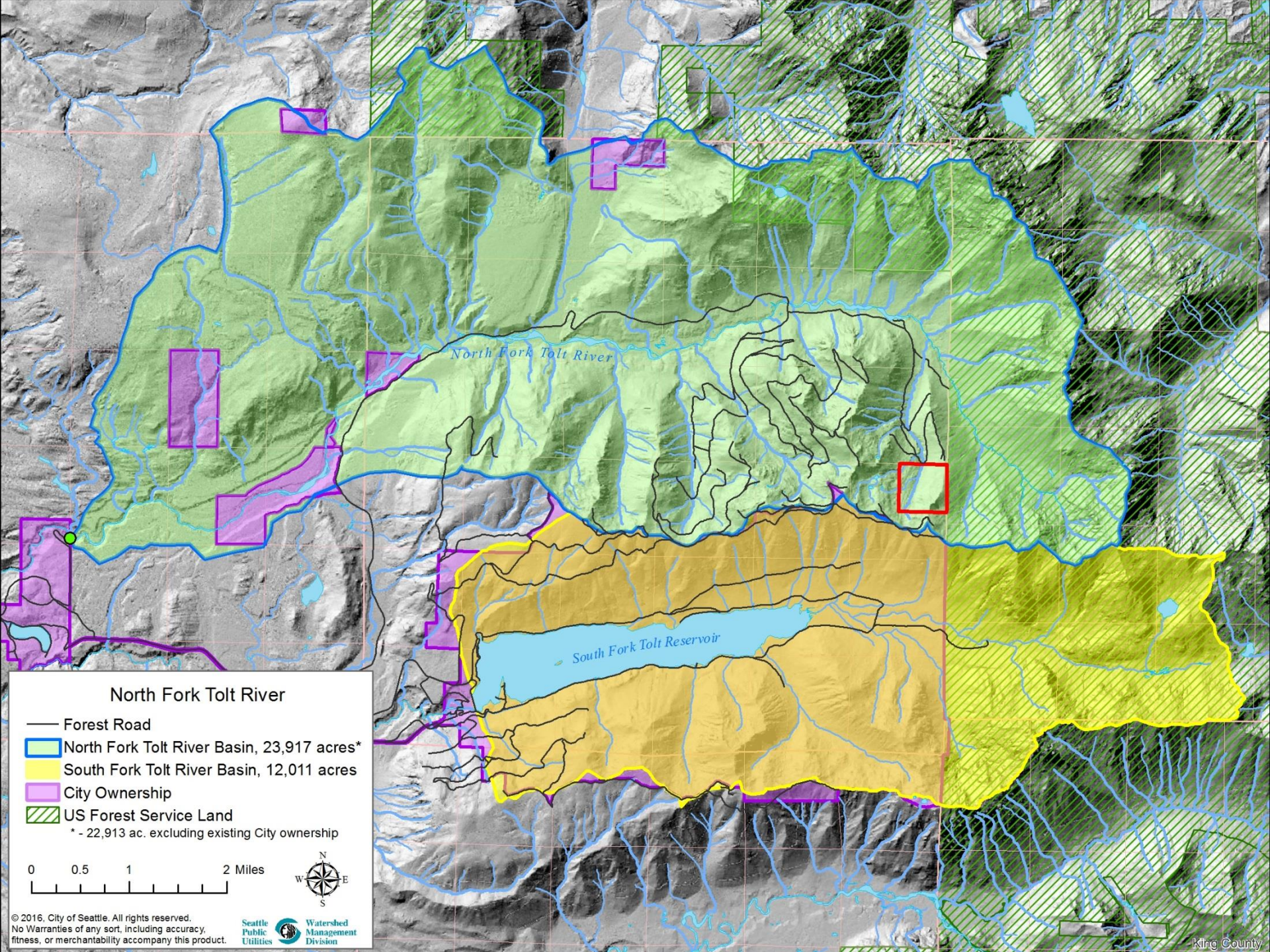
Protecting Forestland

- Last unprotected old-growth forests on private lands in Snoqualmie Watershed
- Targets adjacent to National Forest, DNR and SPU protected habitat.
- Willing landowner



Future acquisition parcel

- Adjacent to transfer parcel and SF Tolt Municipal Watershed
- Approximately 100 acres
- Cost to be included in future budget ordinance



North Fork Tolt River

- Forest Road
 - North Fork Tolt River Basin, 23,917 acres*
 - South Fork Tolt River Basin, 12,011 acres
 - City Ownership
 - US Forest Service Land
- * - 22,913 ac. excluding existing City ownership

