

Seattle City Council Transportation and Utilities Committee

Updates to SMC 21.04.480: SPU Estimated Billing

September 15, 2021



City of Seattle



Background on SMC 21.04.480

- Confirms SPU ownership of water meters.
- Identifies responsibility for damage to meter & SPU shut off right for non-payment.
- Authorizes utility to bill with estimated meter reads and describes how estimated bills are calculated.
- Written in 1935, updated in 1996.

Reasons for SMC Update

- SMC is outdated and confusing for customers.
- Improve language describing how SPU bills are estimated.
- Need for flexibility. Number of estimated bills is low, but SPU meter readers are not always able to obtain reads due to:
 - Cars parked on meters
 - Inclement weather
 - Construction
 - Other obstructions



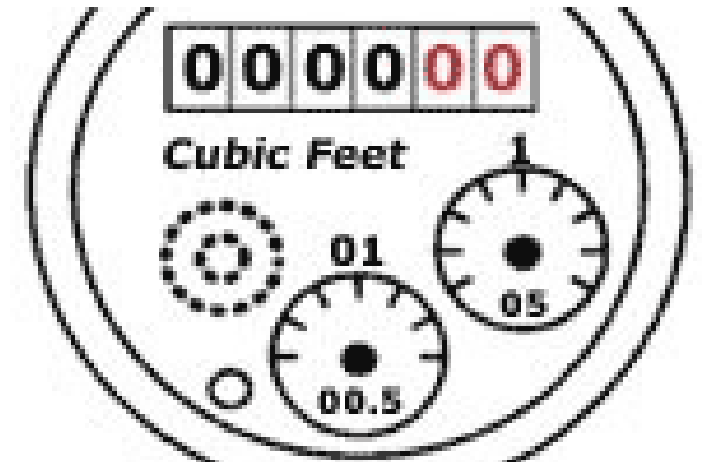
SMC 21.04.480: Summary of Changes

Update to accurately describe SPU business practices

- Authorize estimates if meters fail to register properly or if SPU is unable to obtain a meter read;
- Clarify calculation of estimated bills: historical water consumption, post-repair consumption, or other most reliable data.

Minor technical changes + update references

- No substantive changes
- Improved readability of SMC



Questions?

