

Victor Steinbrueck Park

Parks and Green Spaces Levy Improvement Project

Civic Development, Public Assets and Native Communities Committee

September 4, 2019

Seattle Parks and Recreation



City of Seattle

Victor Steinbrueck Park



Victor Steinbrueck Park Project Background

- Funding from 2008 Parks and Green Spaces Levy: \$1.6 million
- According to provisions in the Levy, this project required City Council approval as follows:
 - The Council would determine whether the project was needed after assessing the impact of the removal of the automated public toilet, installation and operations of surveillance cameras, and increased policing to address public safety issues in and around the park. ***The Council approved proceeding with the project on December 2, 2014.***
 - After this approval, Seattle Parks and Recreation was directed to conduct a design process with broad public outreach and submit the project design for Council review and approval. This is the purpose of this legislation and presentation.
- An additional \$5 million of REET funding is allocated for the membrane replacement



Broad Public Outreach

Outreach in 2015 & 2016:

- Downtown Seattle families
- Neighboring condominium residents
- Native American groups: Tribes, Chief Seattle Club, Seattle Indian Health Board, focus groups
- Marketfront PDA
- Marketfront Foundation
- West End Neighborhood Group
- Women in Black
- Seattle Dept. of Planning & Development
- Seattle Police Dept.



Also:

- 4 public open houses and one “pop-up” event in park held with online surveys from 2016 to 2018
- Improvements in keeping with original design intent, Pike Place Historic Preservation District Guidelines

Existing Conditions

- Two parcels, east & west
- Designed by Victor Steinbrueck and Richard Haag in early 1980s
- Built in 1982 and after 37 years, park is suffering from wear and tear



New Park Design

Major elements:

- Improved sight lines into park
- Renovated seating
- Renovated former play area
- Improved lighting
- Upgraded landscaping
- Art will be determined through a separate process.



Bird's eye view

PROPOSED DESIGN

New features will be added such as stairs, brick paving, table, storage, vegetation, signage.

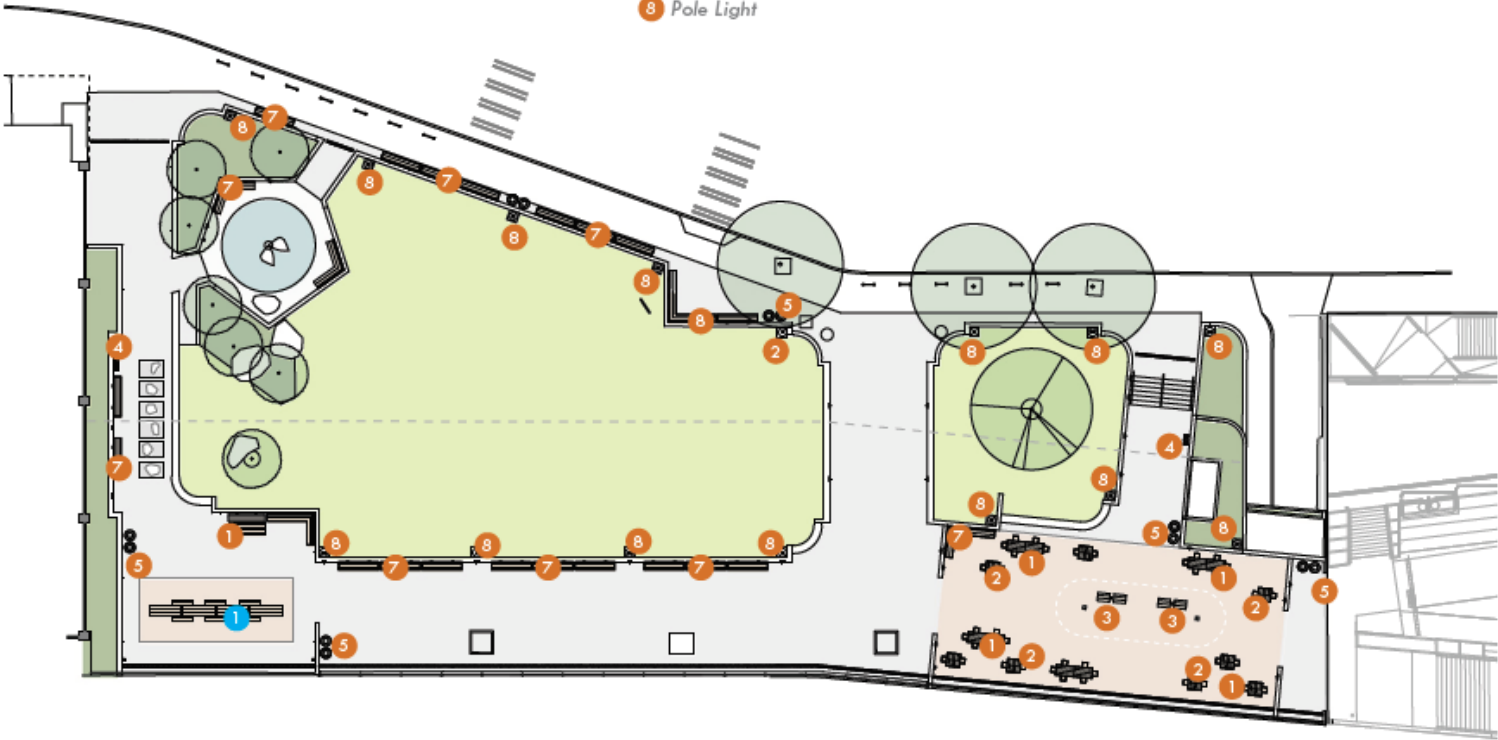
Some features will be removed and reinstalled or replaced.

Altered Features:

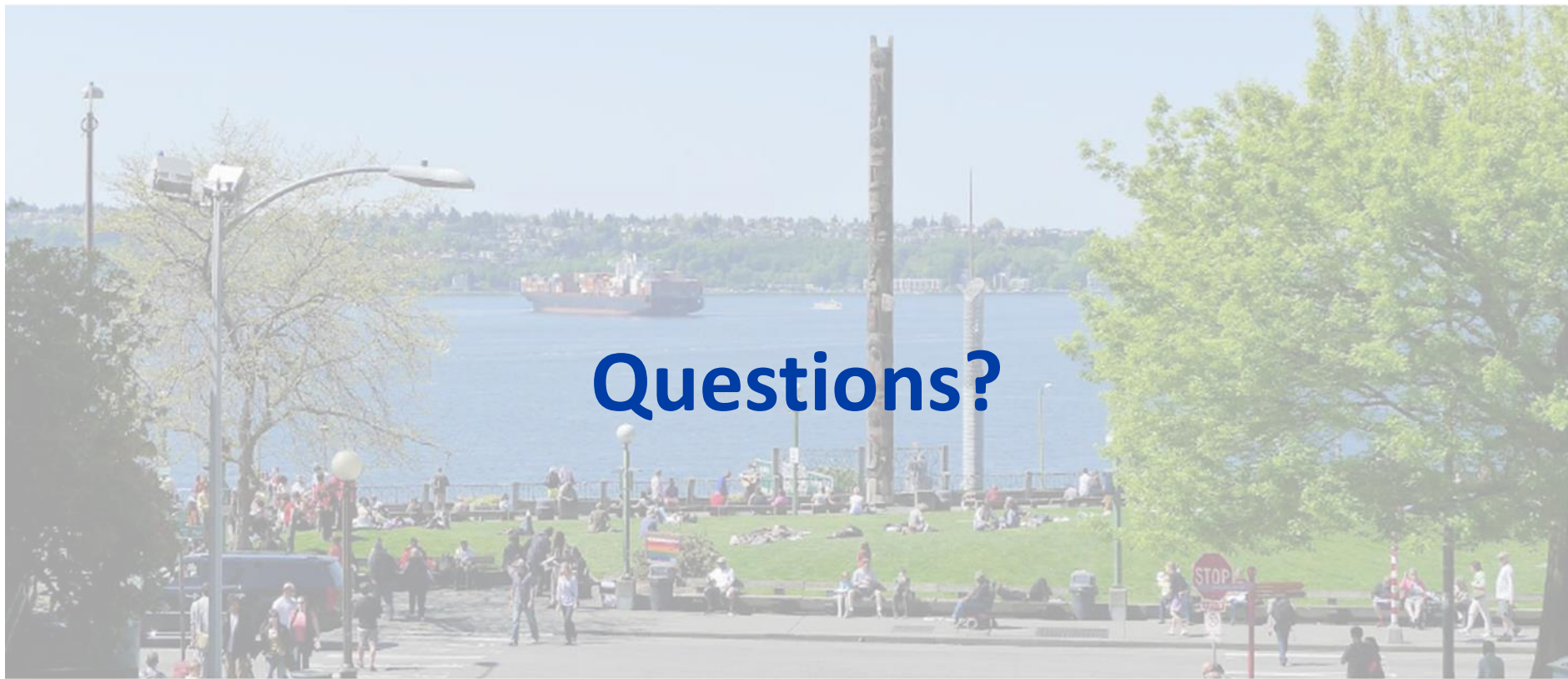
- 1 Picnic Table (several @ each location)
- 2 Stool (several @ each location)
- 3 Pavilion Seat
- 4 Drinking Fountain
- 5 Waste Receptacles
- 6 Low Light (throughout park at walls)
- 7 Bench
- 8 Pole Light

New features:

- 1 Council Table







Questions?

Contact Information:

David Graves, Seattle Parks and Recreation

david.graves@seattle.gov

206-684-7048

Web page: <http://www.seattle.gov/parks/about-us/current-projects/victor-steinbrueck-park>