



# Tree Protections Update

Photo by John Skelton



**Seattle** Department of  
Construction & Inspections



**Seattle**  
Office of Sustainability  
& Environment

Land Use and Neighborhoods Committee

July 14, 2021

# TODAY'S PRESENTATION

---

UFMP Update – Update & Next Steps

Resolution 31902 - Progress Made

- Tree Protections - Public Outreach
- Tree Tracking

Next steps

# UFMP UPDATE

## Underway:

- Final internal review
- Finalize plan

## Next Steps:

- Publish web-based plan
- Translate and print Executive Summary
- Offer Council briefing



# Resolution 31902 – Progress Made

## TREE PROTECTIONS – PUBLIC OUTREACH

---

### METHODOLOGY – TWO APPROACHES

<b>Department of Neighborhoods (DON) Community Liaisons (CLs)</b>	<b>Virtual Listening Sessions</b> <b>Six total 90-minute length</b>
BIPOC, underrepresented groups	Other key stakeholders
Culturally appropriate engagement, in language	Primarily English

## Resolution 31902 – Progress Made

# TREE TRACKING – INVESTMENT MADE

---

Re-purposed existing budget resources to address:

- Information about permitted tree removal/planting/preservation on private property
- Provide for data-driven decisions about policy and legislation
- Provide foundation for measuring outcomes

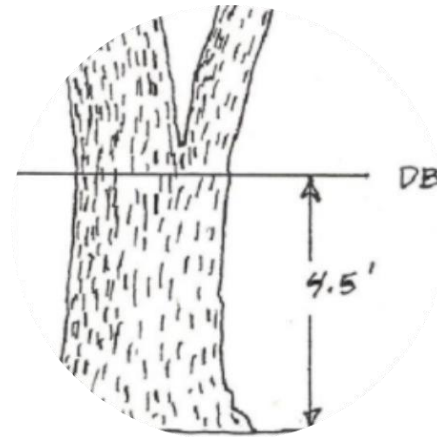


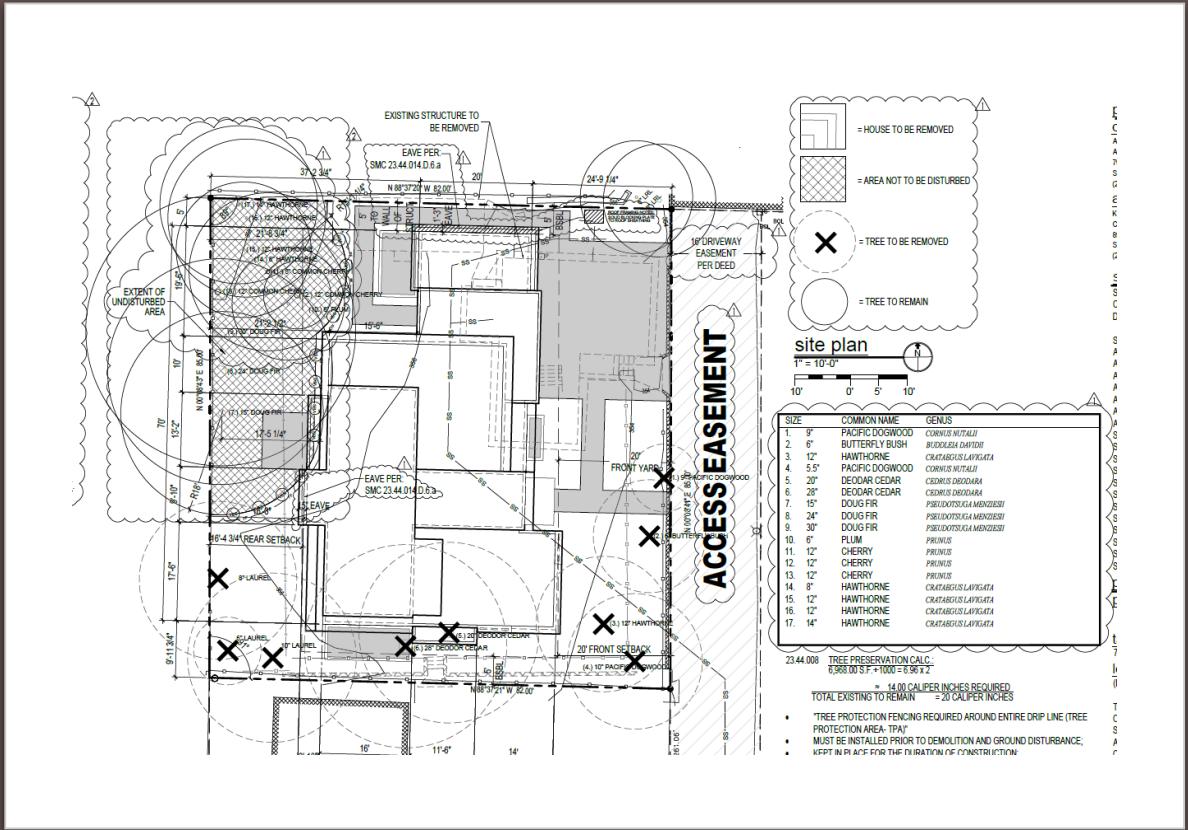
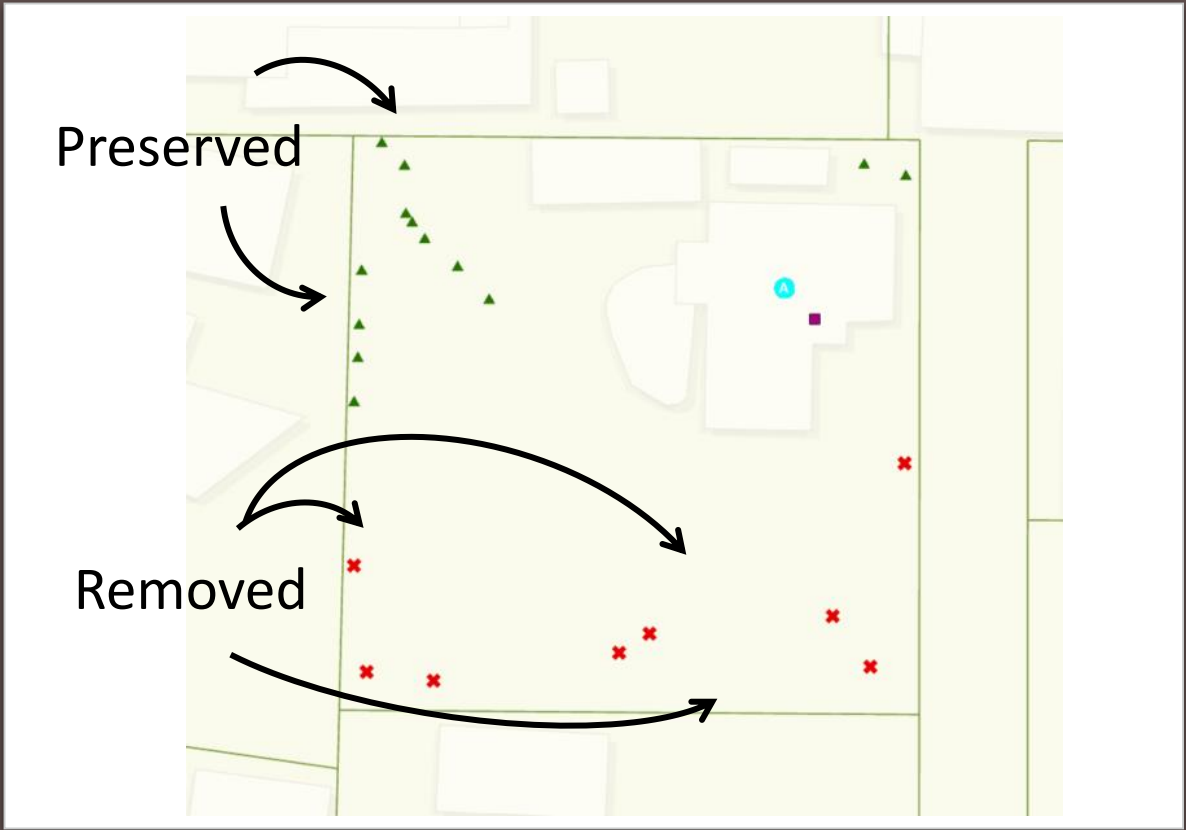
# Resolution 31902 – Progress Made

# TREE TRACKING – DATA COLLECTION

## Data Collected SF/RSL Zones:

- Permit Number
- Tree Name - Scientific, Common
- Exceptional Trees
- Diameter at Standard Height
- Tree Status
- GIS Location
- Linkage to Other Permits
- Arborist Report

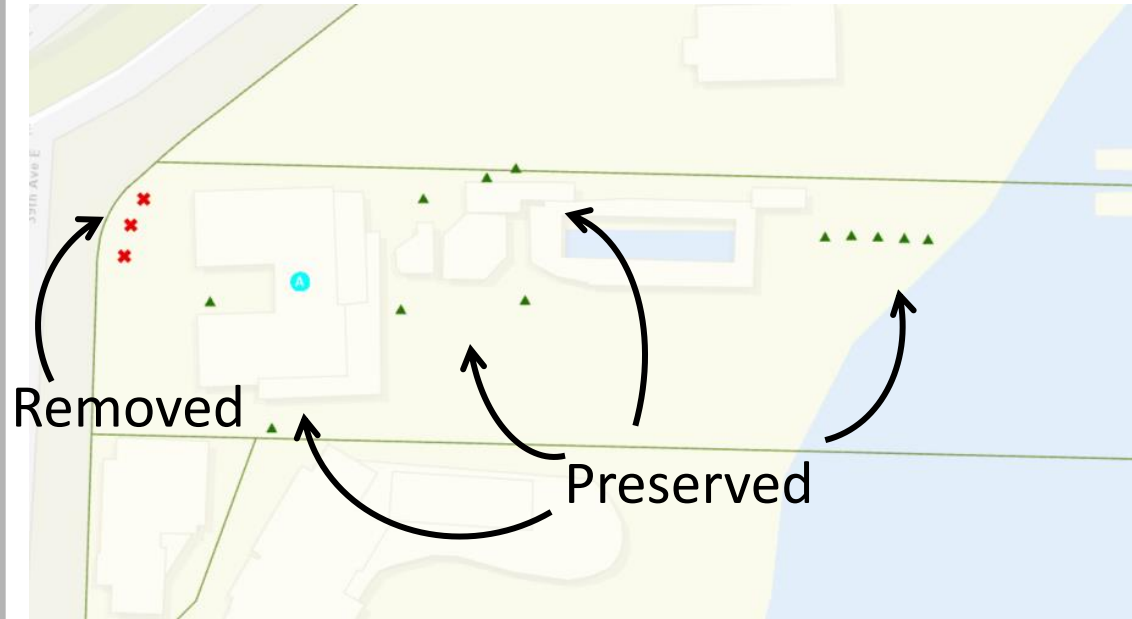




GIS Image

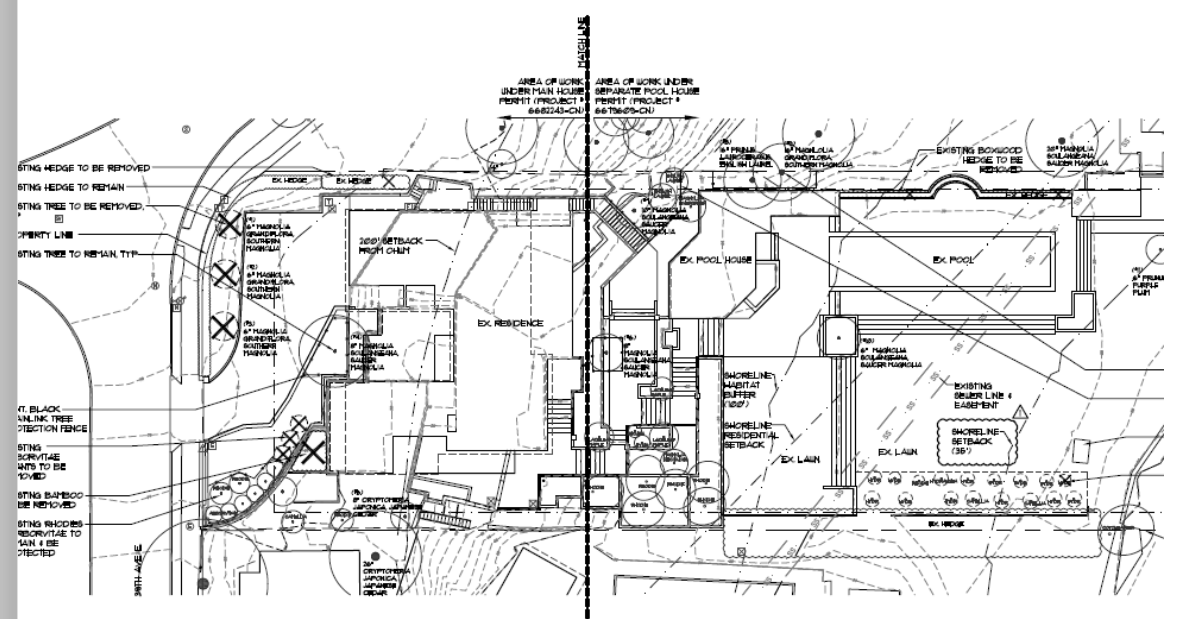
Site Plan – New detached (single family) home

# EXAMPLE #1 – 6590722-CN



Removed

Preserved

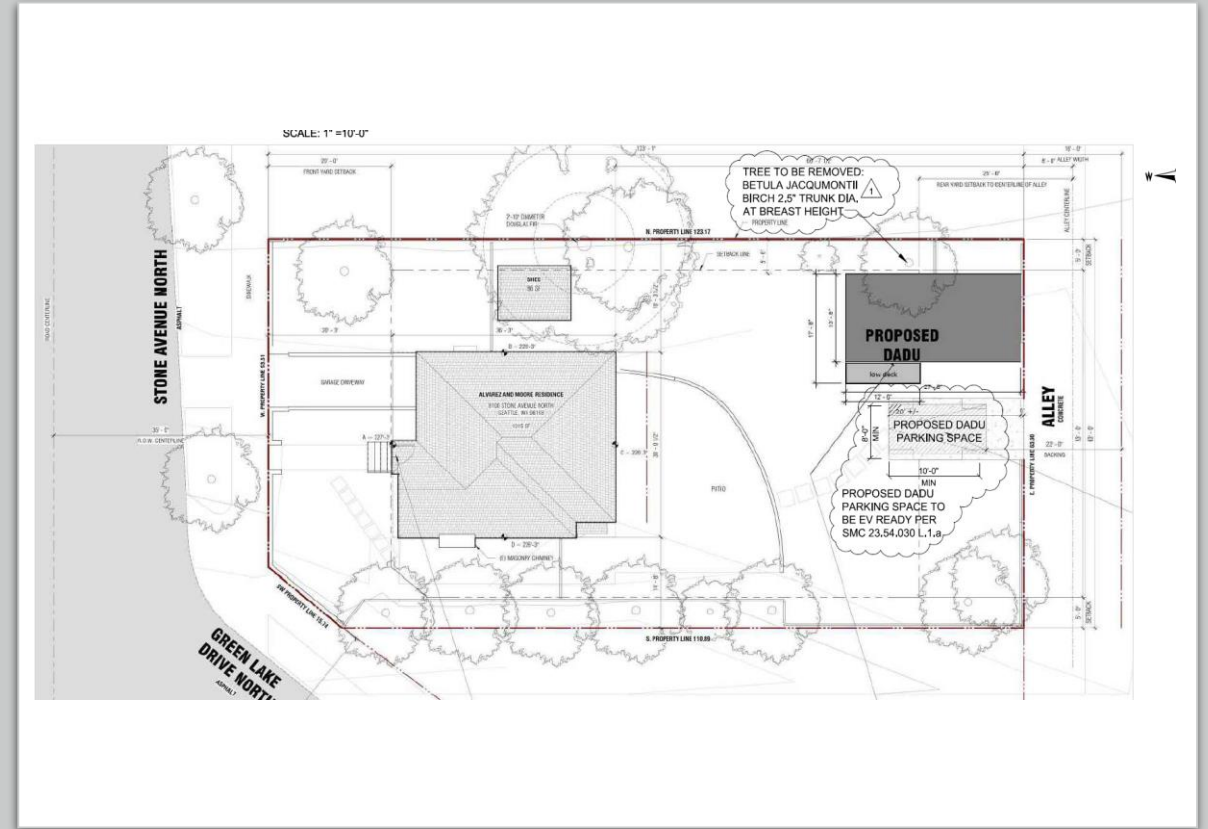
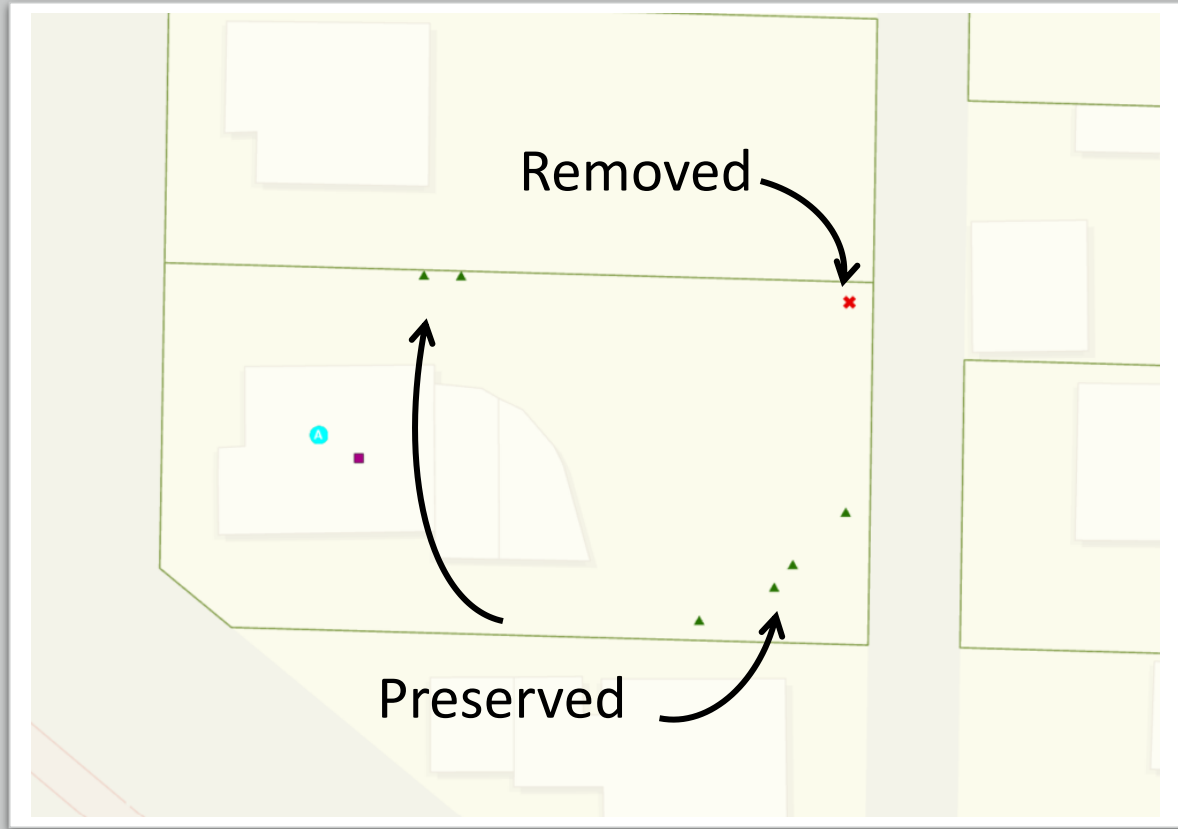


GIS Image

Site Plan – Addition to existing detached (single-family) home with ECAs

# EXAMPLE #2 – 6682243-CN





GIS Image

Site Plan – New Backyard Cottage / DADU

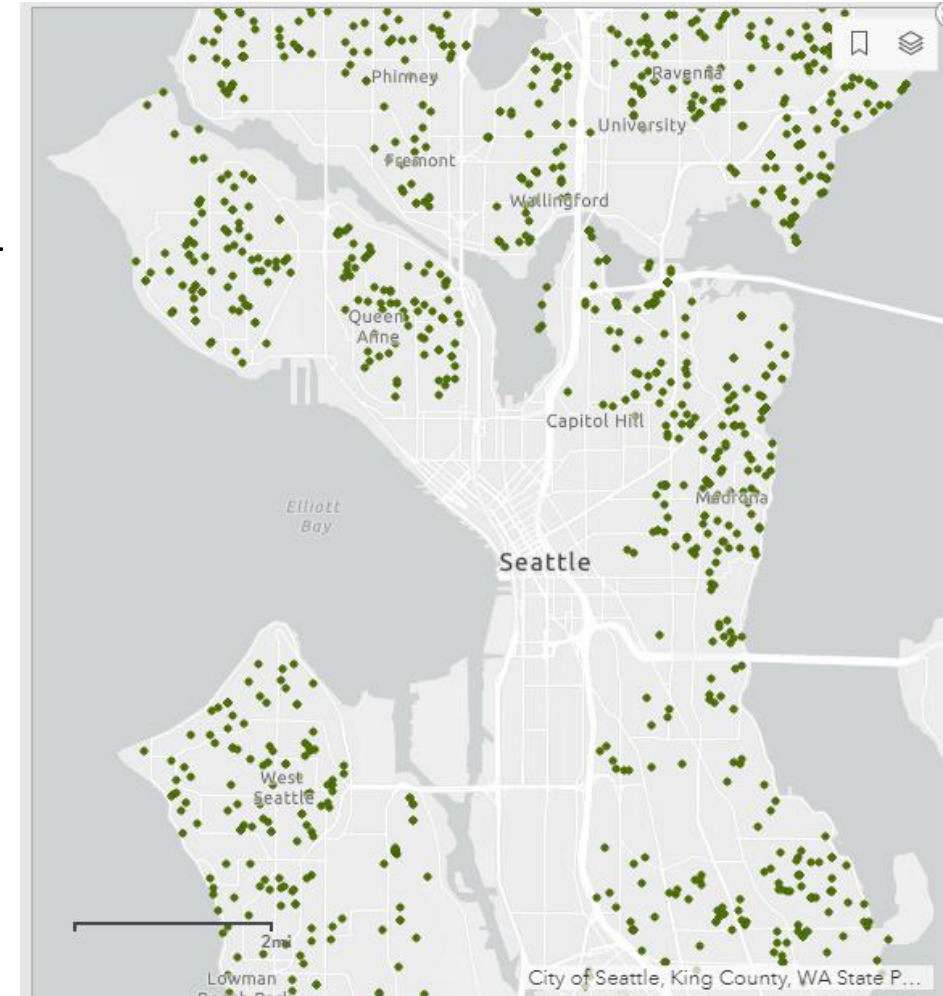
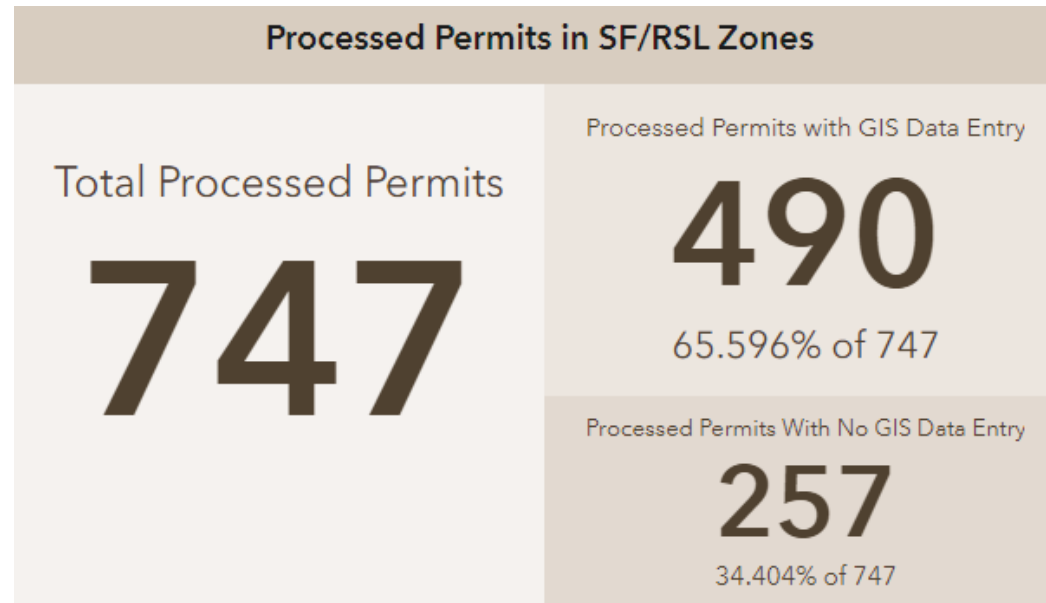
# EXAMPLE #3 – 6725230-CN

# Resolution 31902 – Progress Made

## TREE TRACKING PROGRESS

### Data Collected in Single Family Zones

- Permits from July 1, 2019 - April 23, 2020
- One GIS staff member reviewing permit data in Q1 & Q2 2021
- Moving forward: More GIS staff, expanding to other zones



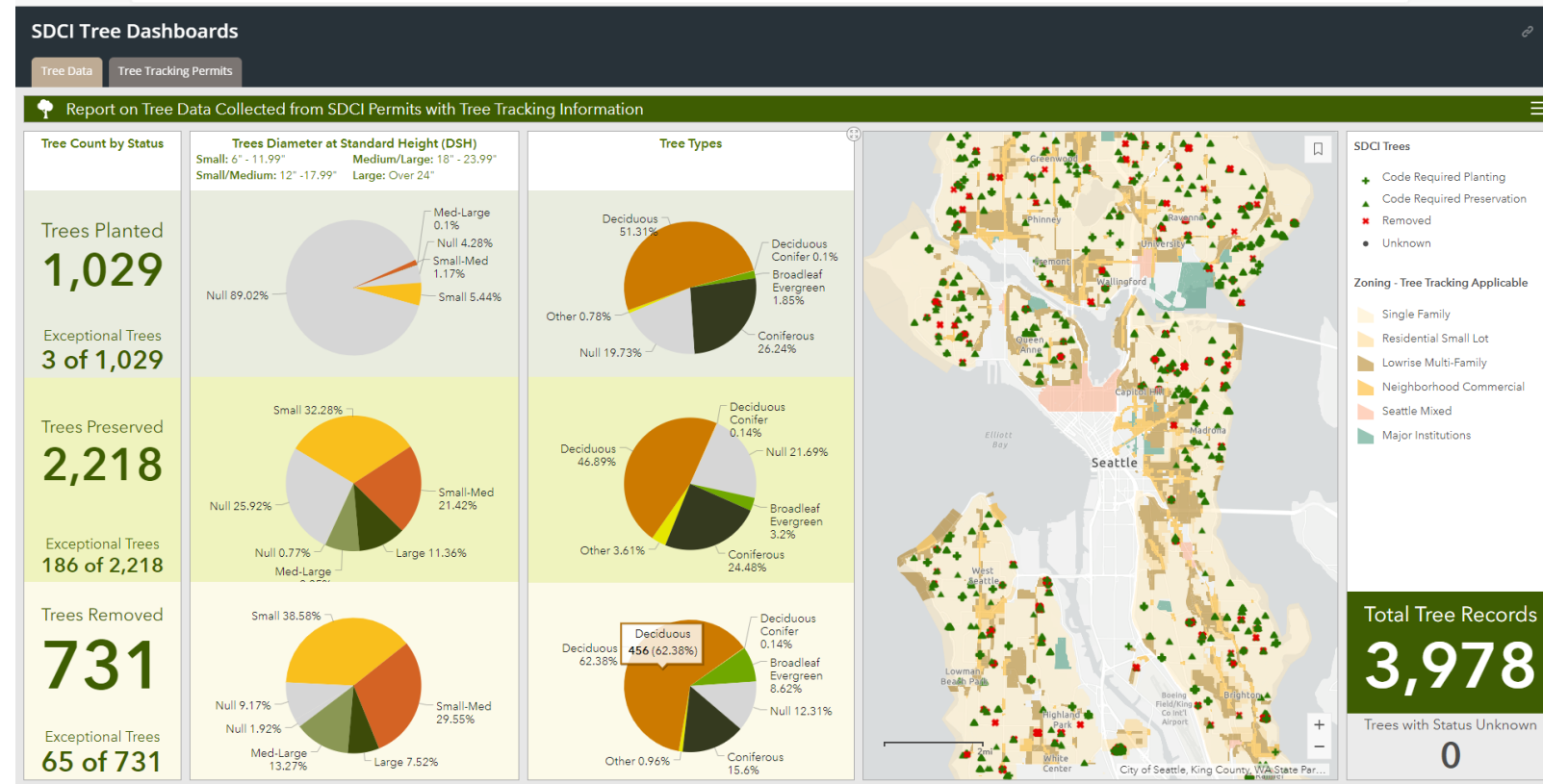
# Resolution 31902 – Progress Made **Permits from July 2019 to April 2020**

## TREE TRACKING DASHBOARD

### Initial Data Collected

3,978 trees of which there were:

- 2,218 preservatiions
- 1,029 plantings
- 731 removals



Permits from July 2019 to April 2020

# Resolution 31902 – Progress Made

# TREE TRACKING PROJECT SCOPE EXPANSION

---

## Additional Zones

- Lowrise
- Neighborhood Commercial
- Seattle Mixed

## Environmentally Critical Areas (ECAs)

- Wetlands
- Fish and wildlife habitat conservation areas
- Geologic hazard areas
- Flood-prone areas
- Abandoned landfills



# NEXT STEPS

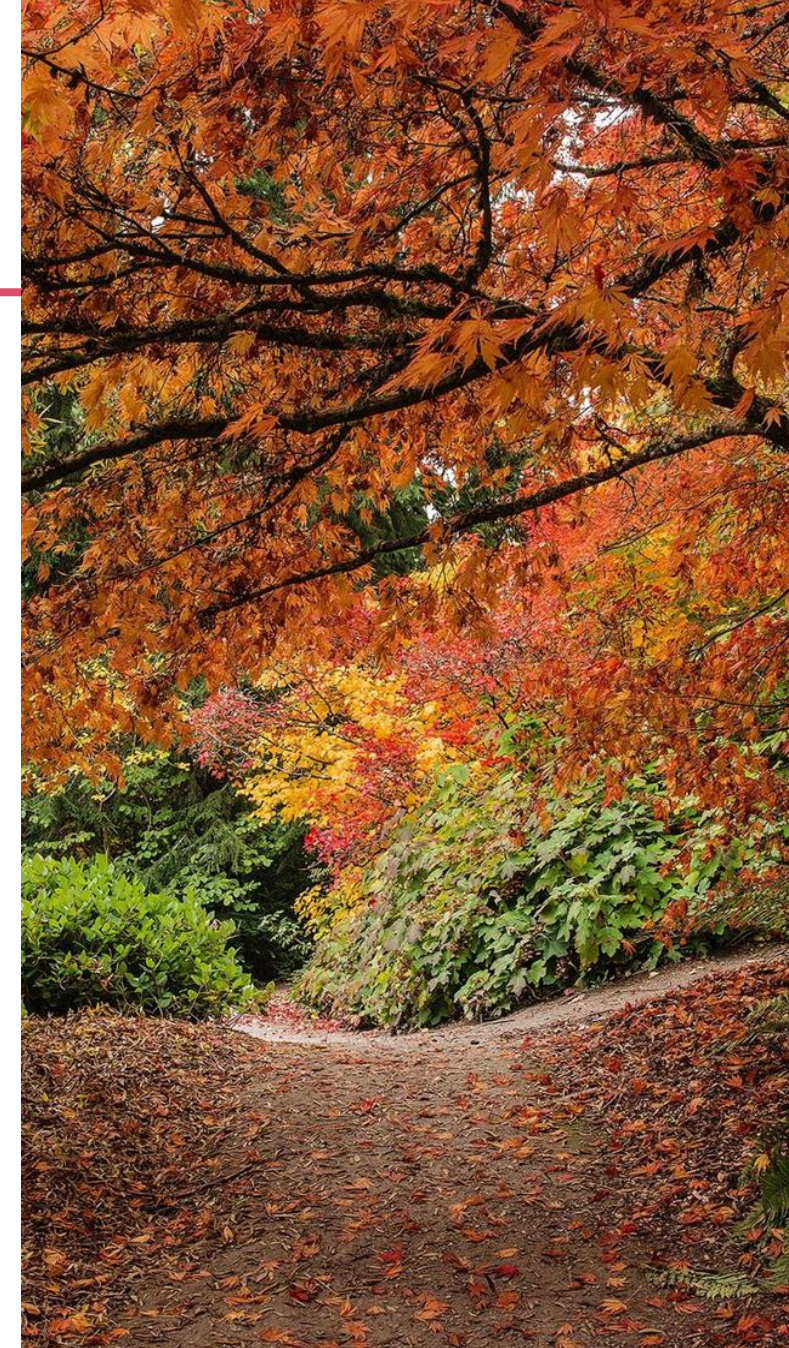
---

## July, August, Sept

- Public outreach, including BIPOC engagement
- Continue Racial Equity analysis

## Q4

- Goal to issue SEPA decision by end of year



# QUESTIONS?

---

Chanda Emery  
chanda.emery@seattle.gov  
(206) 233-2537

[www.seattle.gov/sdci](http://www.seattle.gov/sdci)

Patricia Bakker  
patricia.bakker@seattle.gov  
(206) 684-3194

[www.seattle.gov/ose](http://www.seattle.gov/ose)

