

CITY OF SEATTLE

***HOUSING, HEALTH,
ENERGY, AND WORKERS
RIGHTS COMMITTEE***

**Patty Hayes, RN, MN, Director
January 4, 2017**

Public Health
Seattle & King County 

PUBLIC HEALTH'S PURPOSE

- **Vision: Healthy people and healthy communities**
- **Mission: Eliminate health inequities and maximize opportunities for every person to achieve optimal health**
- **Goals:**
 - All children are born healthy and thrive
 - Adults live long and healthy lives
 - Our communities support and promote health for all

Metro Foundational Public Health Services

Communicable
Disease
Control

Healthy
Communities:
Chronic Disease
and Injury
Prevention

Environmental
Public Health

Maternal Child
Family Health

Assurance Role:
Access to
Clinical Care

Vital Records

Jail Health

EMS

MEO

Across all programs:

- Assessment (surveillance and epidemiology)
- Emergency preparedness and response (all hazards)
- Communications
- Policy development and support
- Community partnership development
- Business competencies

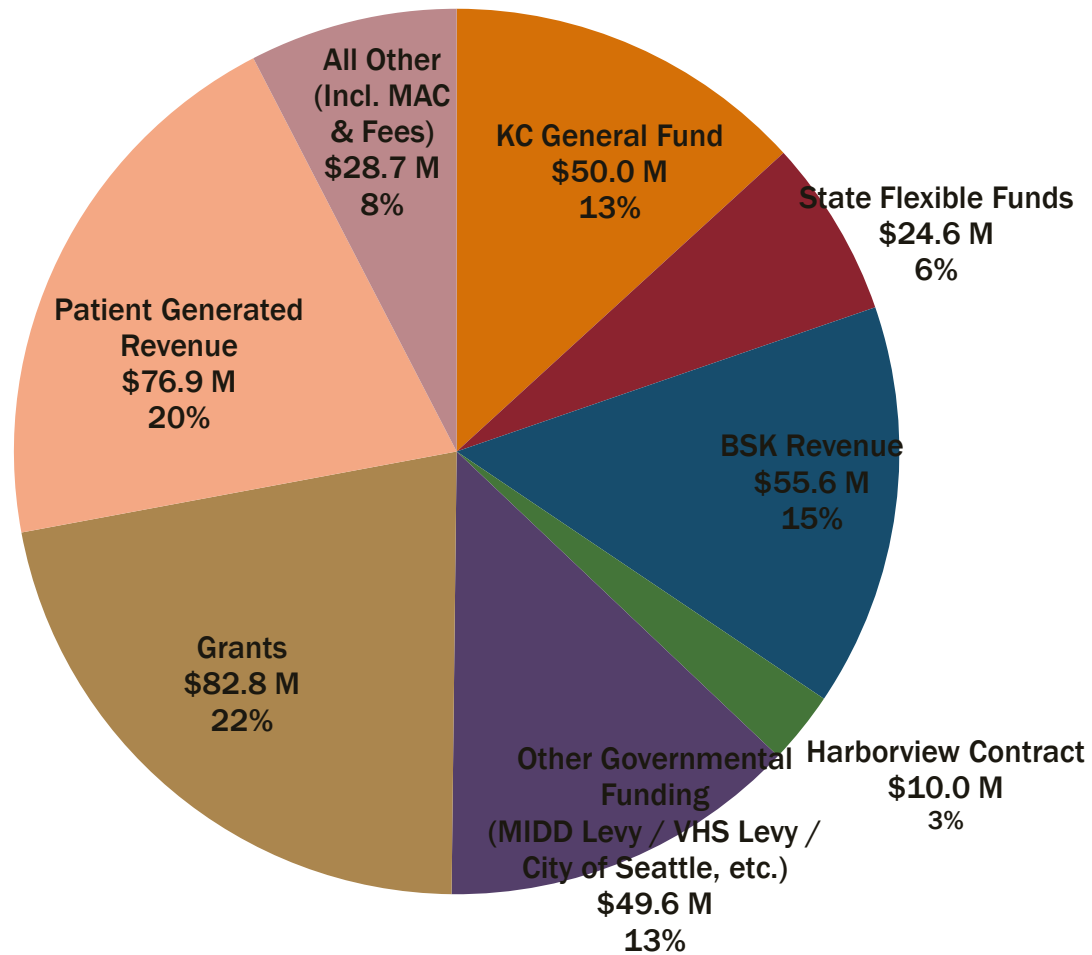
SEATTLE INVESTMENTS

- **\$22.4 million**

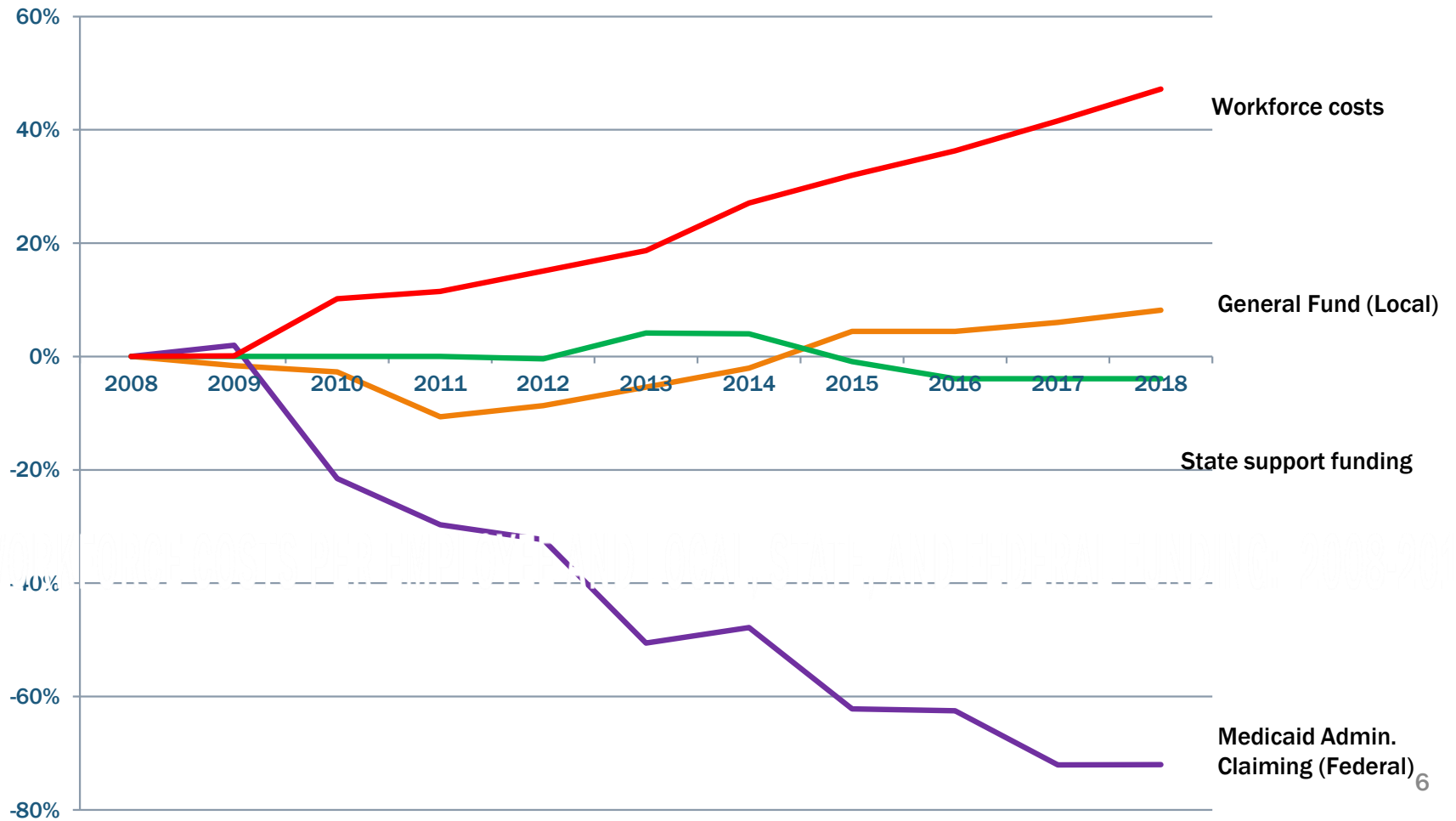
- **Highlights:**

- **Community Health Partnership \$6.4M**
- **School Based Health \$6.3M**
- **Nurse Family Partnership downtown \$2M**
- **Healthcare for the Homeless Network \$1.7M**
- **Childcare Health \$920K**
- **HIV outreach/Intervention \$576K**
- **Mobile Medical Van \$525K**

PUBLIC HEALTH FUND 2017-2018 REVENUE ESTIMATE TOTAL: \$378.3M



COSTS



FUNDING AND CAPACITY IMPACTS



OTHER COMMUNICABLE DISEASE UPDATES

- **Hepatitis A**
 - Large outbreaks in California & Michigan
 - California: 639 cases, 417 hospitalizations, 21 deaths
 - Michigan: 509 cases, 426 hospitalizations, 20 deaths
 - Majority among people experiencing homelessness/settings of limited sanitation
- **Norovirus and vibrio associated with oysters**
 - Since June, we have published results of 45 investigations at restaurants serving raw oysters. Most of these were vibrio.
 - Prior to June we investigated dozens of outbreaks/incidents of norovirus associated with oyster consumption



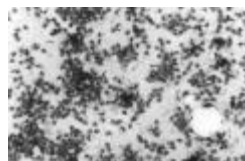
UNDER-RESOURCED COMMUNICABLE DISEASE PROGRAMS

2018 Legislative request for funding to address:

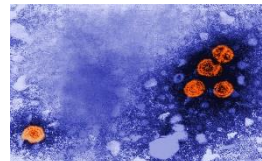
- Zoonotic disease (e.g. hanta virus fatality, raccoon roundworm, rabid bats, streptococcus fatality)
- Latent tuberculosis (100,000 people in King County living with non-contagious TB)
- Chronic hepatitis C and hepatitis B (Hep C kills more Americans than any other infectious disease)
- Healthcare acquired infections (e.g. legionella, superbugs, etc.)
- STD infections and preventing congenital syphilis
- Emergency preparedness to help respond to CD surge needs



TB



Rabies



Hep



Legionella



Gonorrhea

PARENT CHILD HEALTH PROGRAMS

- First Steps/Maternity Support Services – 15,000 annually
- Nurse Family Partnership – 863 families county wide; 394 in Seattle UPDATE
- Other programs in MCH include WIC, Early Intervention Program, and Children with Special Healthcare Needs, Community Service Offices.
- Changes in federal and state program requirements and a decline in visits have led to a decline in patient-generated revenue.
- We are working to understand the reasons for the decline in visits. There has been a significant change in the demographics of Medicaid-insured women and the program must be responsive to their needs.
- Public Health is working to redesign PCH to meet evolving community needs



Best Starts for KIDS

VISION

We want to see more babies born healthy, more kids thrive, and more young people grow up to be happy, healthy, successful adults.

