

Department of Transportation

Department Overview



BUSINESS JOURNAL PHOTO | Marcus R. Donner © 2014

Council Transportation Committee

Scott Kubly, Director

January 22, 2016



Our mission, vision, and core values

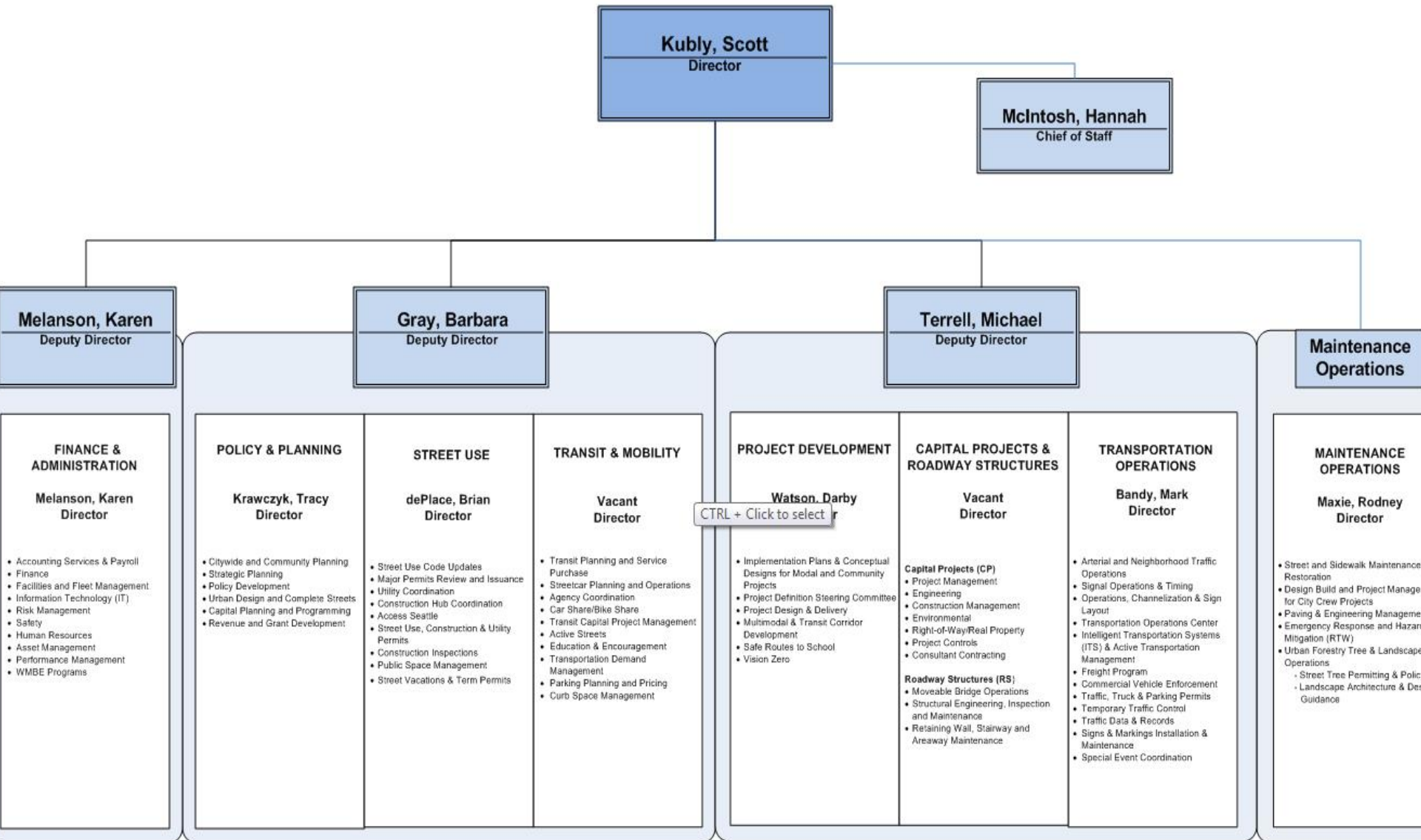
Mission: deliver a high-quality transportation system for Seattle

Vision: connected people, places, and products

Committed to **5 core values** to create a city that is:

- Safe
- Interconnected
- Affordable
- Vibrant
- Innovative

For **all**



Organizational structure

Finance and Administration

- Accounting services & payroll
- Finance
- Facilities and fleet management
- Information technology
- Risk management
- Safety
- Human resources
- Asset management
- Performance management
- WMBE programs

Policy and Planning

- Citywide and community planning
- Strategic planning
- Policy development
- Urban design and complete streets
- Capital planning and programming
- Revenue and grant development

Organizational structure

Project Development

- Implementation plans
- Conceptual designs for modal and community projects
- Project definition steering committee
- Project design & delivery
- Multimodal and transit corridor development
- Safe Routes to School
- Vision Zero



Organizational structure

Street Use

- Street use code updates
- Major permits review and issuance
- Utility coordination
- Construction hub coordination Access Seattle
- Street use, construction & utility permits
- Construction inspections public space management
- Street vacations & term permits

Capital Projects and Roadway Structures

- Engineering
- Construction management
- Environmental
- Right-of-way/real property
- Project controls
- Consultant contracting
- Bridge operations
- Structural engineering, inspection, and maintenance
- Retaining wall, stairway, and areaway maintenance

Organizational structure



Transportation Operations

- Arterial and neighborhood traffic operations
- Signal operations & timing
- Operations, channelization & sign layout
- Transportation operations center intelligent transportation systems & active transportation management
- Freight program
- Commercial vehicle enforcement
- Traffic, truck & parking permits
- Temporary traffic control traffic data & records
- Signs & markings installation & maintenance
- Special event coordination

Organizational structure

Transit and Mobility

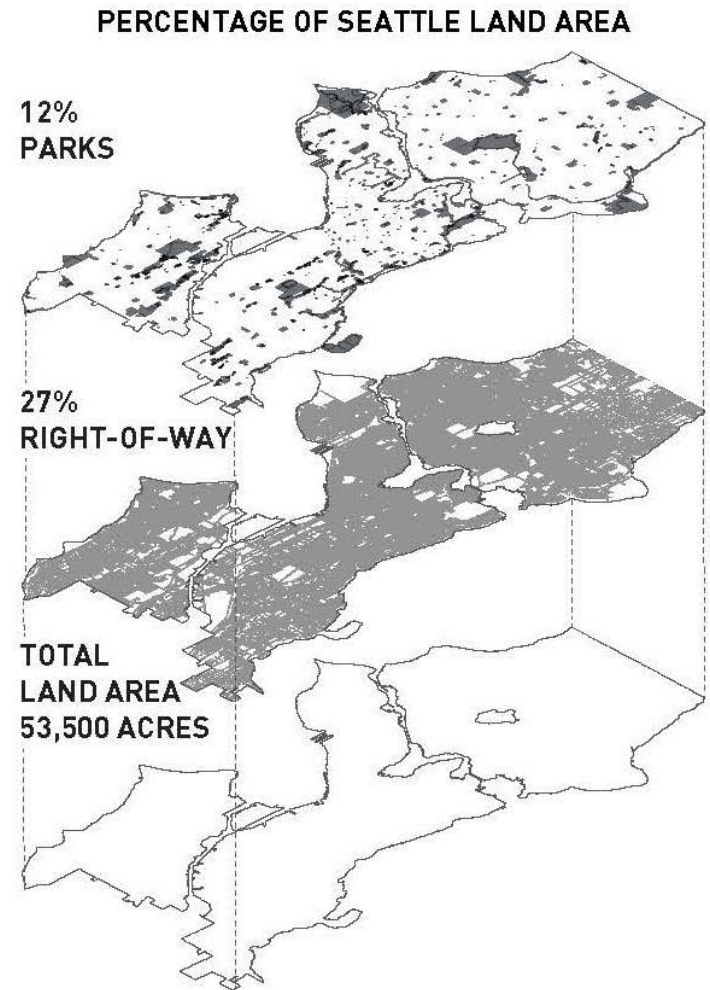
- Transit planning and service purchase
- Streetcar planning and operations
- Agency coordination
- Car share/bike share
- Transit capital project management
- Active streets
- Education & encouragement
- Transportation demand management
- Parking planning and pricing
- Curb space management

Maintenance Operations

- Street and sidewalk maintenance and restoration
- Design build and project management for city crew projects
- Paving & engineering management
- Emergency response and hazard mitigation
- Urban forestry

Stats

- 1,547 lane-miles of arterial streets
- 2,407 lane-miles of non-arterial streets
- 122 bridges
- 509 stairways
- 614 retaining walls
- 22 miles of seawalls
- 158 traffic cameras
- 1,061 signalized intersections
- 47 miles of bike trails
- 338 miles of on-street bike facilities
- 41,000 street trees
- 2,040 pay station locations
- 29,073 curb ramps
- More than 170,000 signs
- 110 acres of landscaped areas



Major initiatives for 2016

- Levy to Move Seattle implementation and reporting
- Safe Routes
- Freight Master Plan
- Utility coordination
- Vision Zero

The Levy to

MOVE SEATTLE



Questions?

Cheryl.Swab@seattle.gov | (206) 386-1831

www.seattle.gov/transportation

