

RETURN  
TO  
HOCKEY  
SEATTLE



# HISTORY

---



Washington State Pavilion built for 1962 Seattle World's Fair.



Seattle Supersonics inaugural season in 1967.

# KEY DATES

---



1994-95 renovation & naming rights sold to Key Bank.



2008 Sonics leave for OKC.

# THE CHALLENGE

---

- City owned asset in decline, increasing negative impact on Seattle Center campus
- NHL + NBA ready
- Complex engineering & design
- 400,000 to 800,000 sq. ft.
- Privately financed
- Landmark status





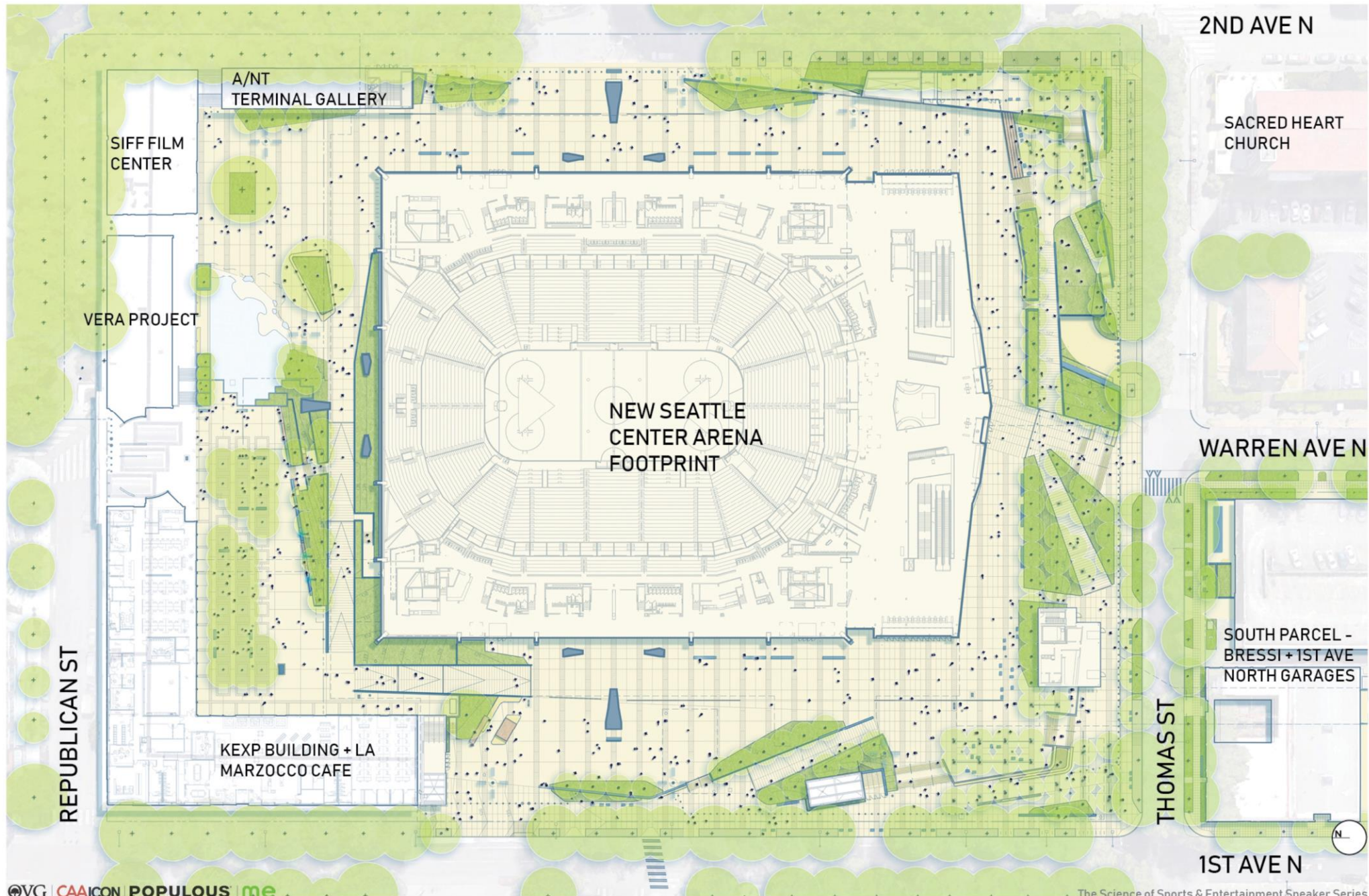
# 2017 CITY ISSUES RFP





**DREAMS COME TRUE**





REPUBLICAN ST

SIFF FILM CENTER

VERA PROJECT

A/NT  
TERMINAL GALLERY

NEW SEATTLE  
CENTER ARENA  
FOOTPRINT

KEXP BUILDING + LA  
MARZOCCO CAFE

2ND AVE N

SACRED HEART  
CHURCH

WARREN AVE N

SOUTH PARCEL -  
BRESSI + 1ST AVE  
NORTH GARAGES

THOMAS ST

1ST AVE N



# THE TEAM

---



**POPULOUS**



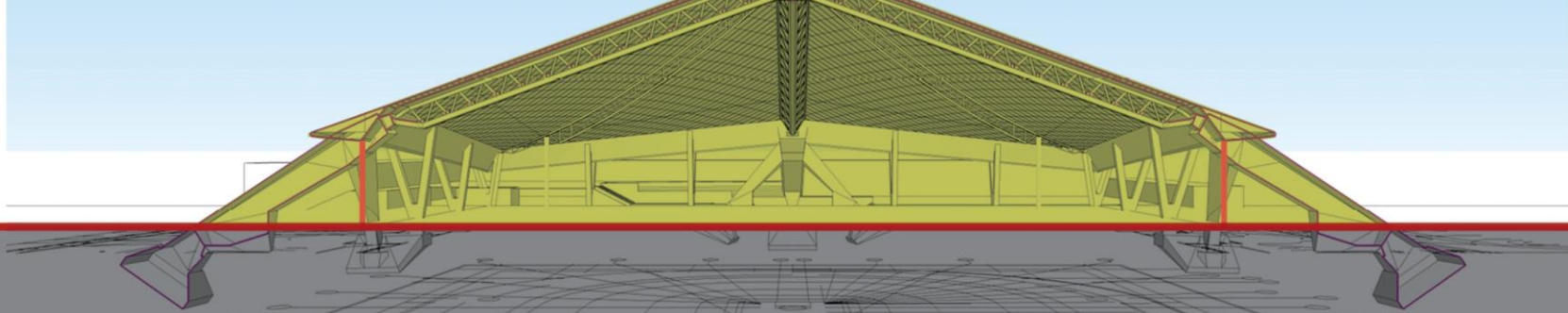
**CAAICON**





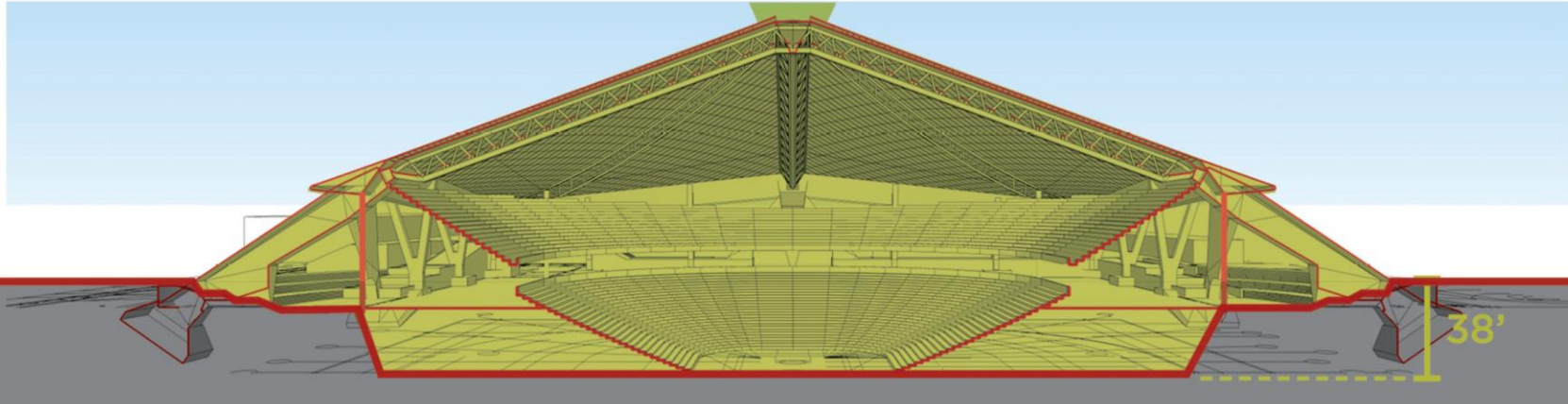
1962

PLAZA LEVEL



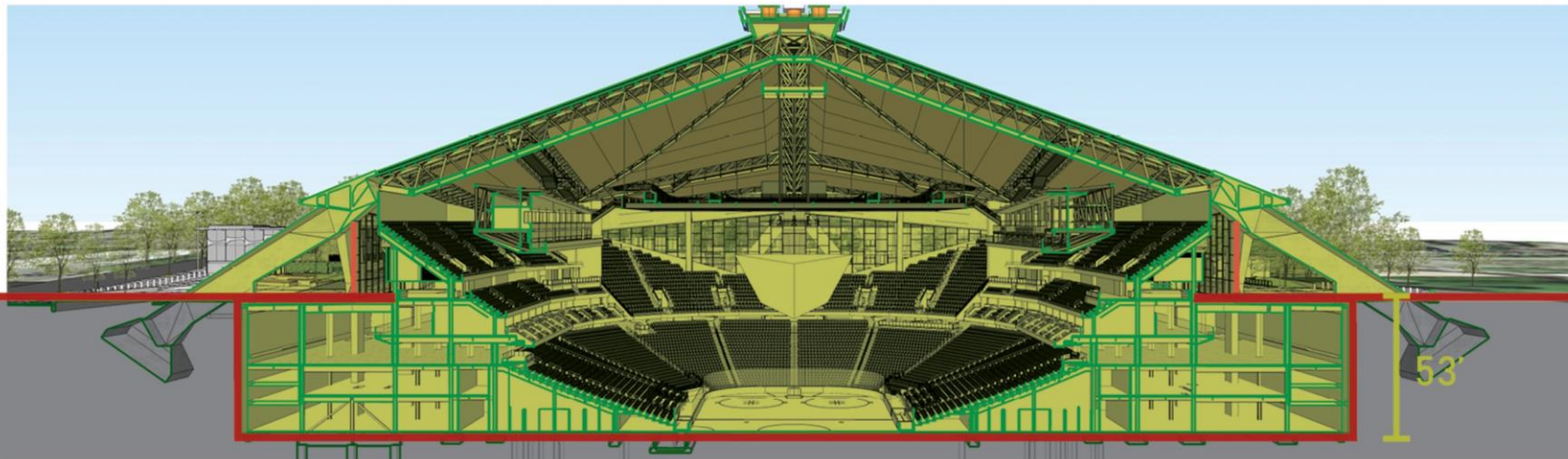
1995

PLAZA LEVEL



2021

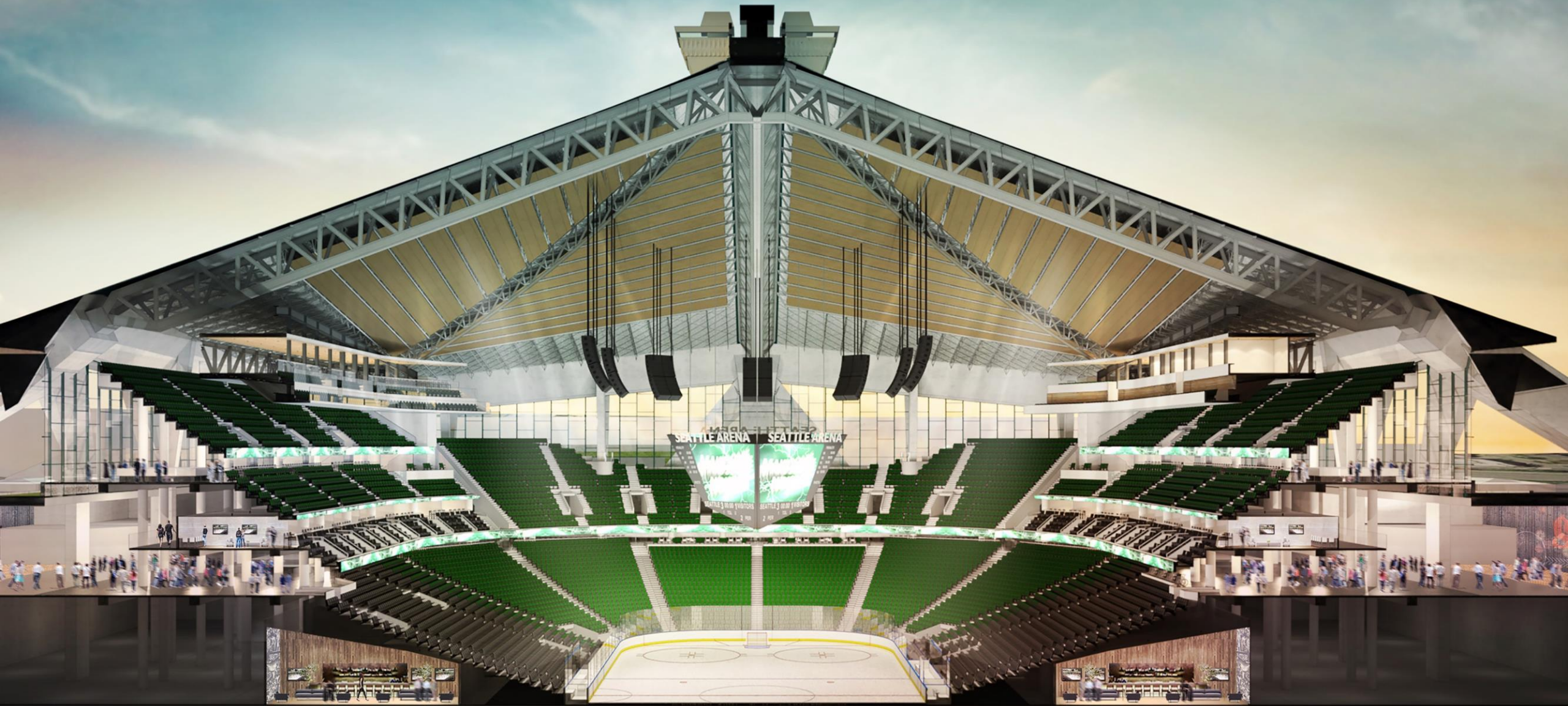
PLAZA LEVEL

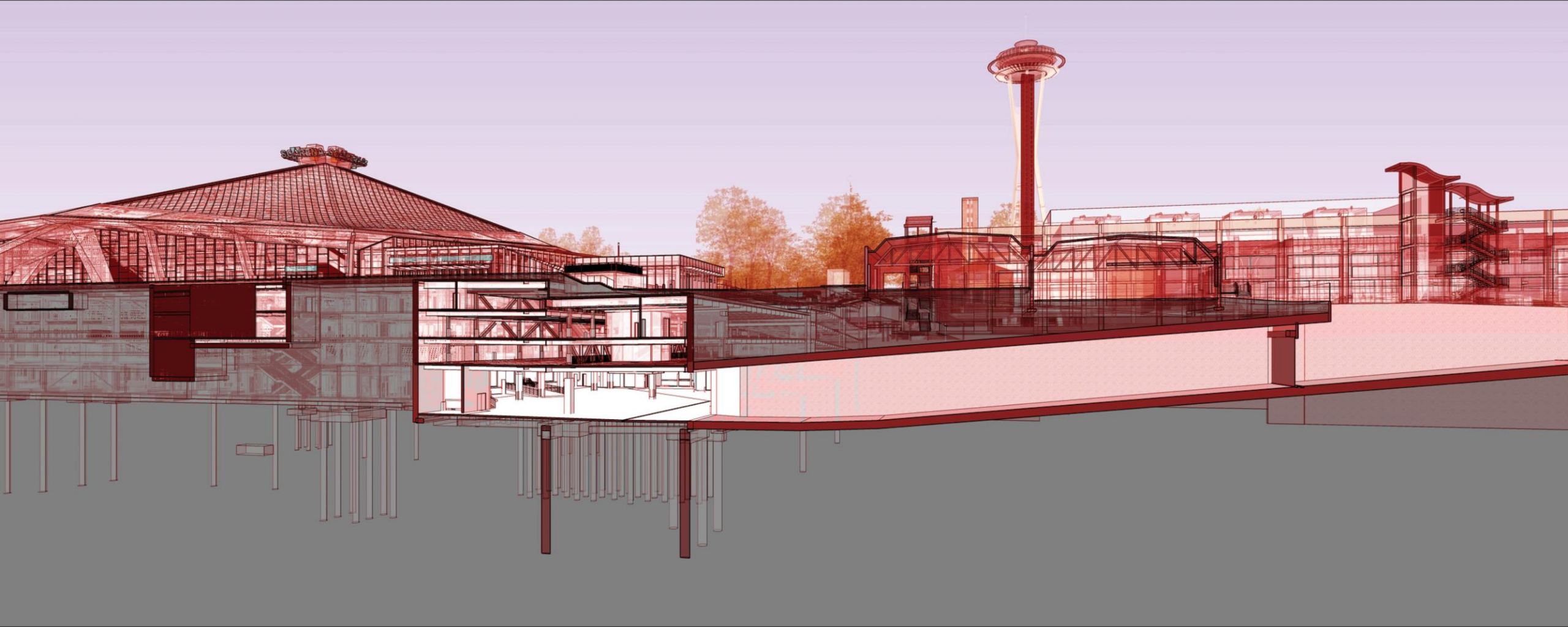






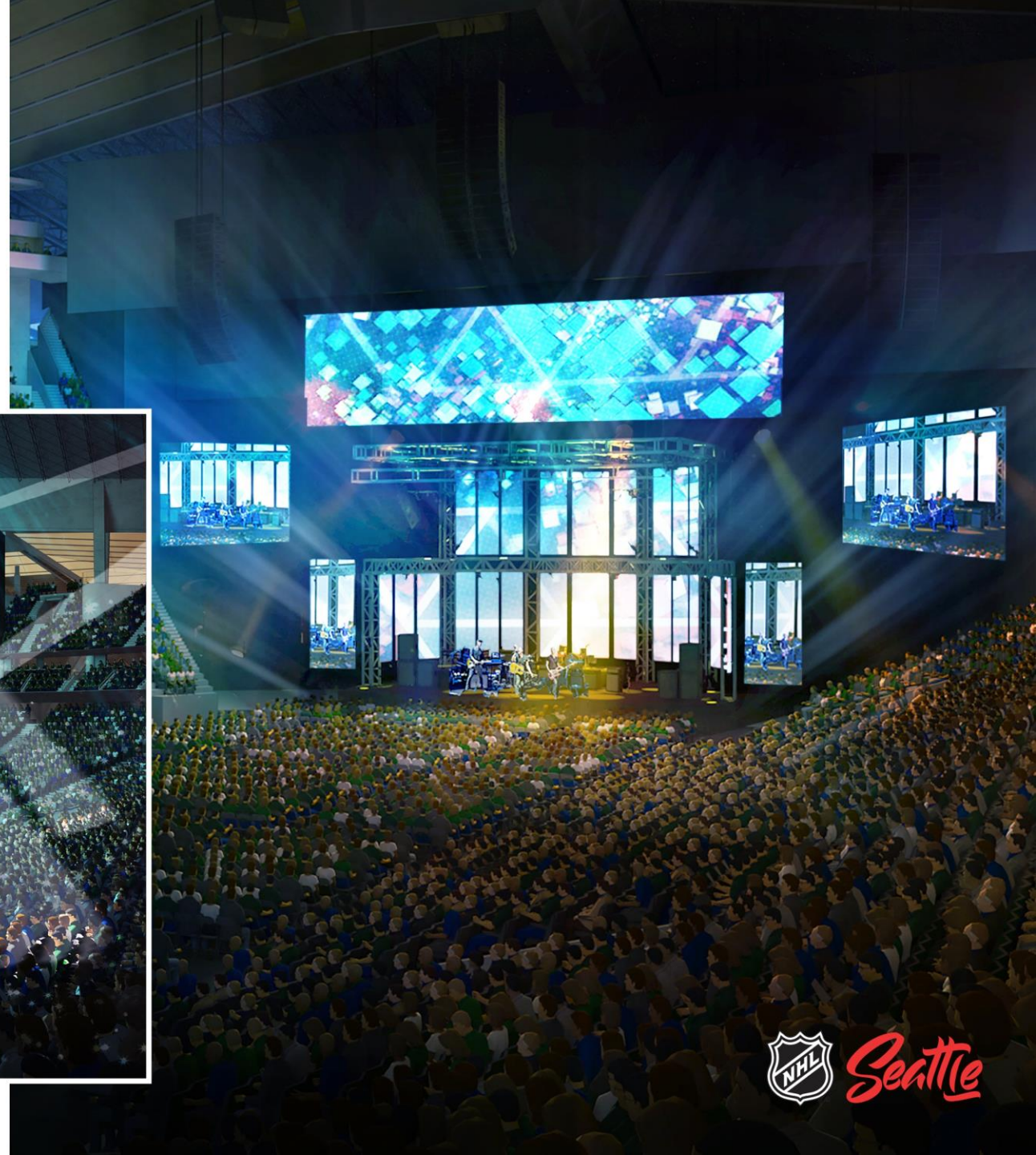
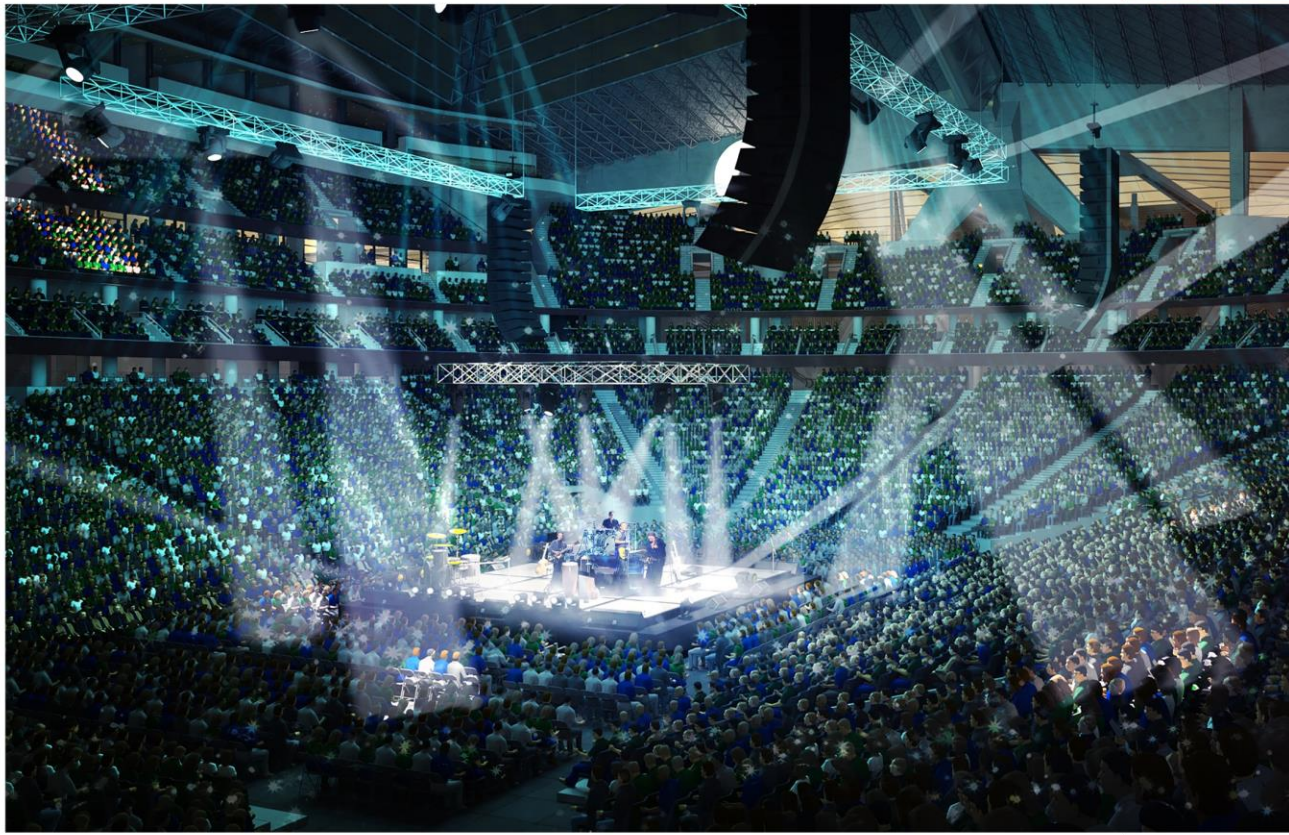






# WORLD-CLASS SPORTS & ENTERTAINMENT

---









MAKE SOME NOISE!!! MAKE SOME NOISE!!! MAKE SOME NOISE!!! MAKE SOME NOISE!!! MAKE SOME NOISE!!!

MAKE SOME NOISE!!! MAKE SOME NOISE!!! MAKE SOME NOISE!!! MAKE SOME NOISE!!! MAKE SOME NOISE!!!

MAKE SOME NOISE!!! MAKE SOME NOISE!!! MAKE SOME NOISE!!! MAKE SOME NOISE!!! MAKE SOME NOISE!!!

MAKE SOME NOISE!!! MAKE SOME NOISE!!! MAKE SOME NOISE!!! MAKE SOME NOISE!!! MAKE SOME NOISE!!!

MAKE SOME NOISE!!! MAKE SOME NOISE!!! MAKE SOME NOISE!!! MAKE SOME NOISE!!! MAKE SOME NOISE!!!

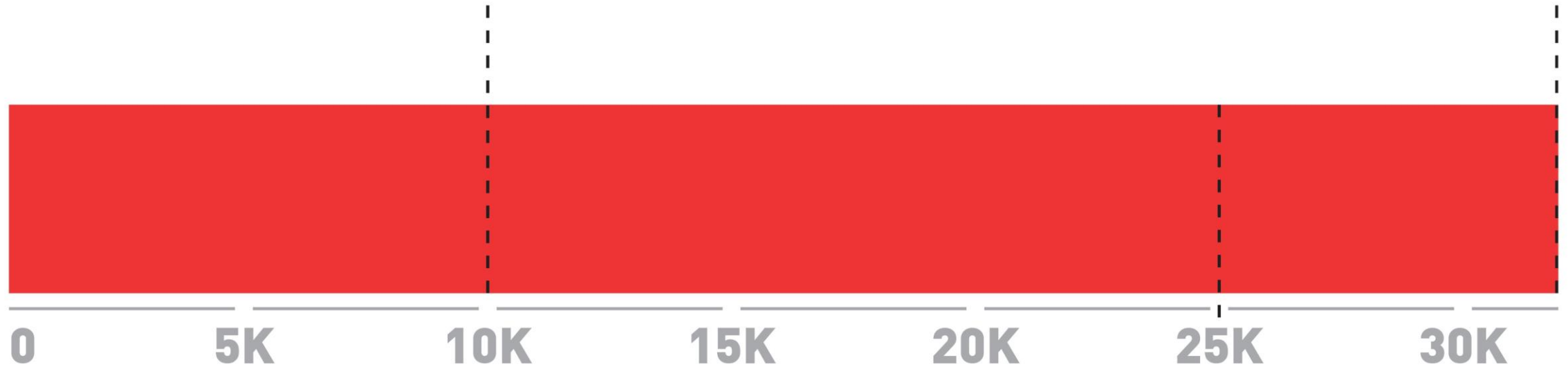
MAKE SOME NOISE!!! MAKE SOME NOISE!!! MAKE SOME NOISE!!! MAKE SOME NOISE!!! MAKE SOME NOISE!!!

MAKE SOME NOISE!!! MAKE SOME NOISE!!! MAKE SOME NOISE!!! MAKE SOME NOISE!!! MAKE SOME NOISE!!!



**10,000 TICKETS  
SOLD IN 12 MINUTES**

**CAPPED AT  
32,000**



**25,000 TICKETS  
SOLD IN 1 HOUR**



NATIONAL HOCKEY LEAGUE | LIGUE NATIONALE DE HOCKEY





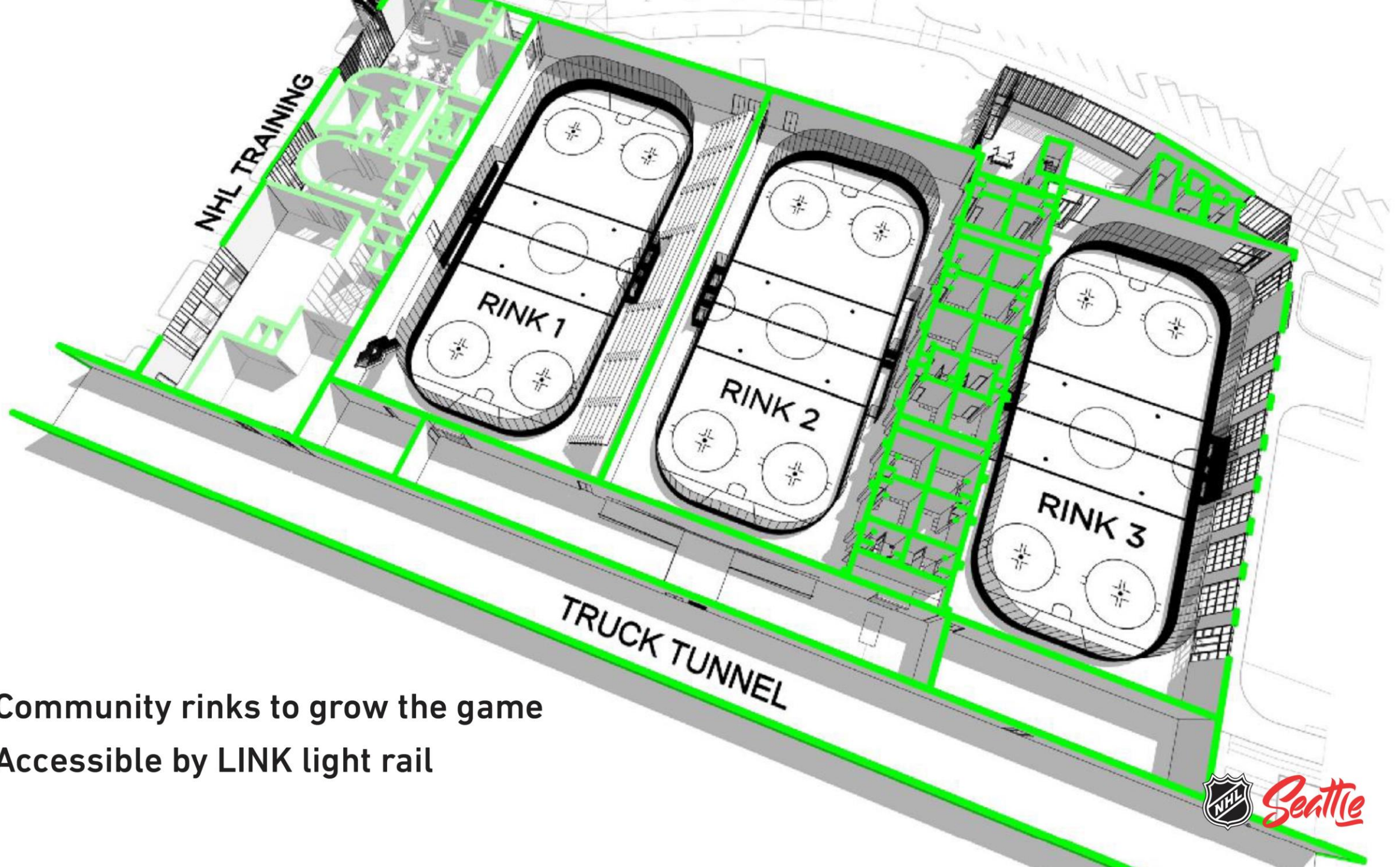
ICE  
CENTRE

# NHL SEATTLE ICE CENTRE AT NORTHGATE

EAST ENTRANCE VIEW







- Community rinks to grow the game
- Accessible by LINK light rail

