



Bicycle Master Plan

Implementation Plan

Sustainability and Transportation Committee

Darby Watson and Scott Kubly

July 17, 2016

Our mission, vision, and core values

Mission: deliver a high-quality transportation system for Seattle

Vision: connected people, places, and products

Committed to **5 core values** to create a city that is:

- Safe
- Interconnected
- Affordable
- Vibrant
- Innovative

For **all**

Presentation overview

- What we heard
- Implementation plan process
- Coordination
- Other commitments
- Next steps

What we heard

Implementation Plan

- More transparency in the process
- Address connectivity
- Increase quick wins

Coordination

- Confirm ONE Center City coordination

Other Commitments

- Confirm Bikeshare proviso projects are on track
- Access through construction



Implementation Plan process

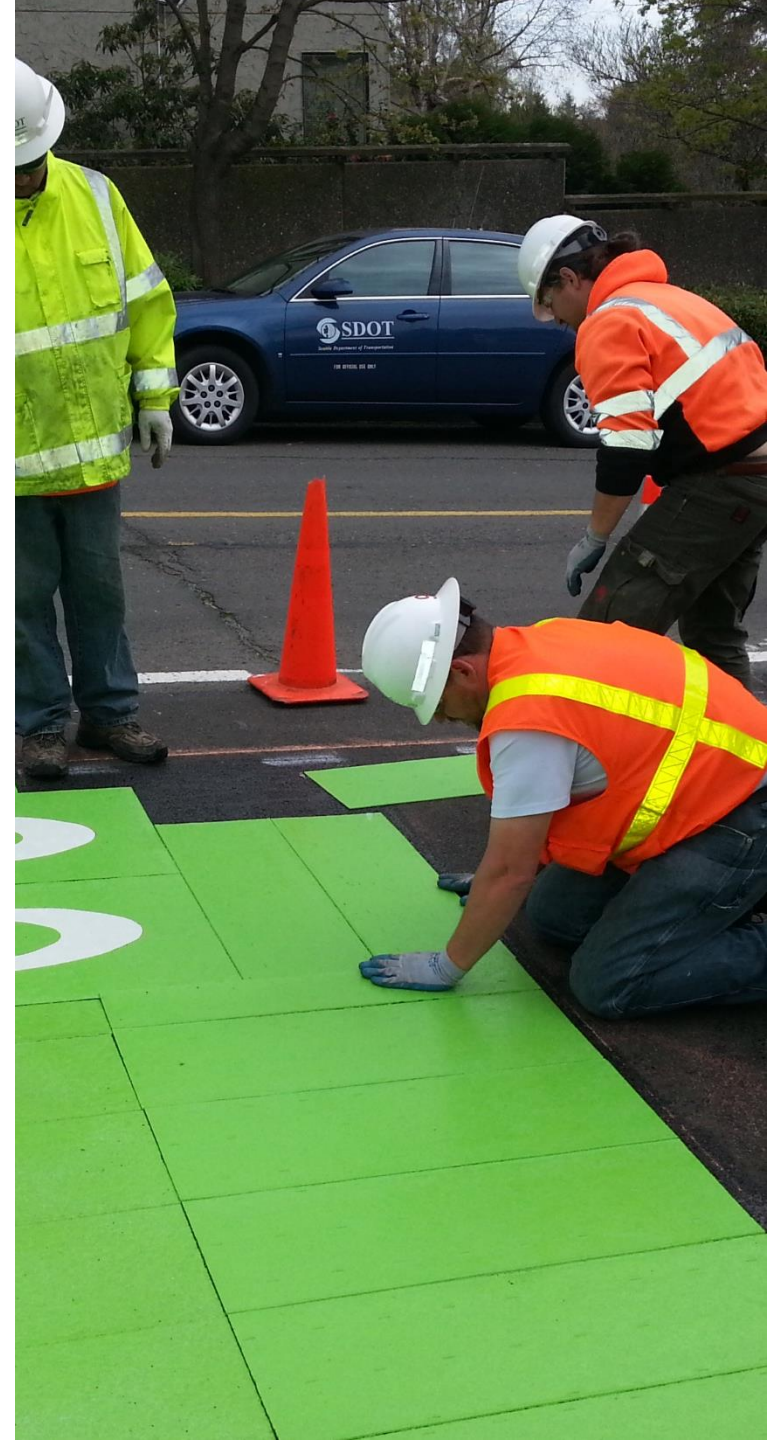


- Agree on assumptions
- Re-run quantitative
- Dive deep into qualitative (connectivity)
- Document all decisions
- Review and confirm budgets and funding (quick wins)

Coordination

ONE Center City Plan

- Collaborative modeling of transit and bicycle facilities
- Joint outreach with the public advisory group and the Center City Bike Network sounding board
- Scenario recommendations in Aug/Sept



Other commitments

Bikeshare proviso projects	
a) Dexter Ave N Protected Bike Lane (Mercer St to Roy St)	on schedule (winter 2016)
b) Westlake Ave N Protected Bike Lane (W Raye St to Valley St)	on schedule (summer 2017)
c) 2nd Ave Protected Bike Lane (Yesler Way to S Washington St)	Completed
d) 9th Ave N Protected Bike Lane (Westlake Ave N to Denny Way)	on schedule (winter 2016)
e) 2nd Ave Protected Bike Lane (Pike St to Denny Way)	on schedule (summer 2017)

Other commitments

Access through construction		
Increase inspectors awareness of bicycle impacts		
	Bike emphasis in Access Seattle roundtable discussions	Q3
	Ride-along with Bike board and inspectors	Q3
Improve communications		
	Advanced notification of bike lane closures	Q3
	Public-facing map of construction-related bike lane closures	Q3
	Weekly review of bike lane closures and re-routes	Q3
Traffic control manual update		
	Create multiple templates for near term use	Q3
	Update traffic control manual	Q4
	Incorporate bike facilities into Construction Management Plan review	Q3

Questions?

Darby.watson@seattle.gov | (206) 684-7609
www.seattle.gov/transportation/bike.htm

www.seattle.gov/transportation

