

Bomb Cyclone Storm Response & Recovery Briefing

Sustainability, City Light, Arts & Culture Committee

January 17, 2025

Agenda

- Opening Comments from the COO
- Bomb Cyclone Storm Overview – Impact & Response
- Incident Command Structure (ICS) Initiated
 - Preparedness
 - Pre-Disaster
 - Response
 - All Hands-on Deck
 - Recovery
 - Long Term Planning
 - Mitigation
 - Post-Disaster

Bomb Cyclone Storm Overview

All Hands-On Deck



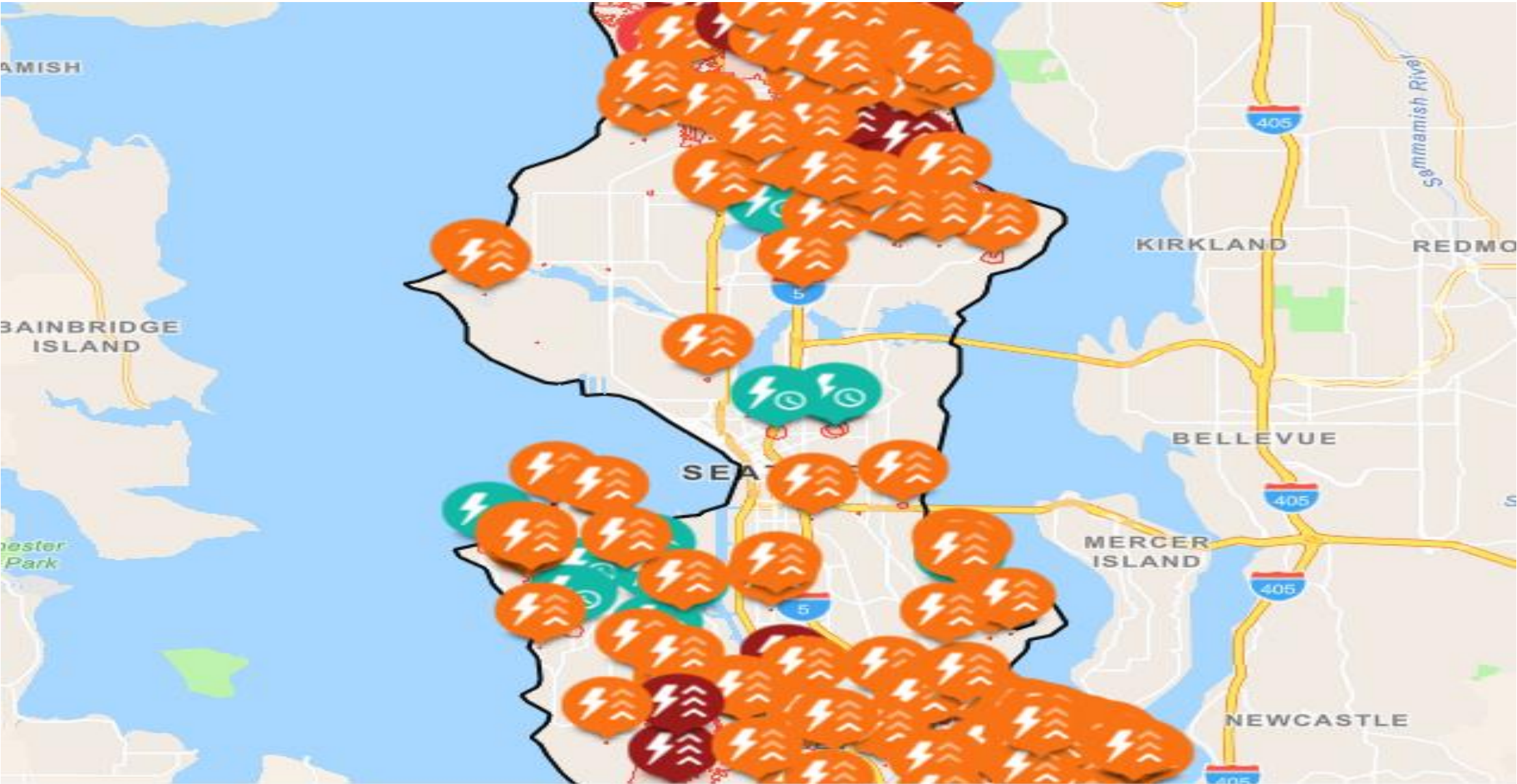
Seattle City Light

Bomb Cyclone Response & Restoration Overview

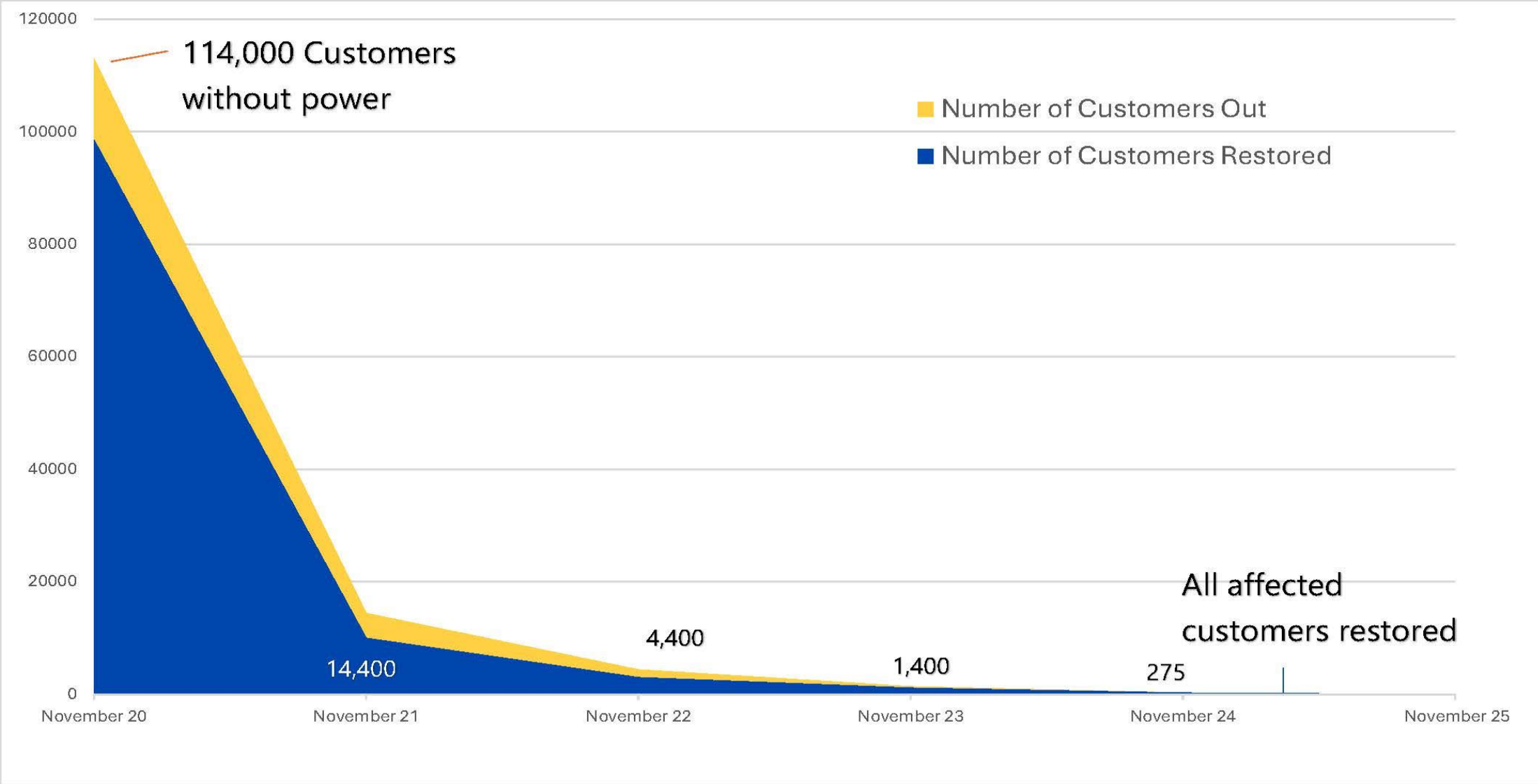
- Storm hit November 20, 2024
- 114,000 Outages
 - 20% of our customer base
- OneSeattle Coordination Efforts
 - Office of Energy Management (OEM)
 - Seattle Dept. of Transportation (SDOT)
 - Seattle Public Utilities (SPU)
 - Human Service Department (HSD)
- Incident Management Team Activation
 - SCL Staff
- Restoration Prioritization



Storm Impact & Restoration Snapshot – 11/20/24 @9:30AM



Bomb Cyclone Impact & Restoration Overview

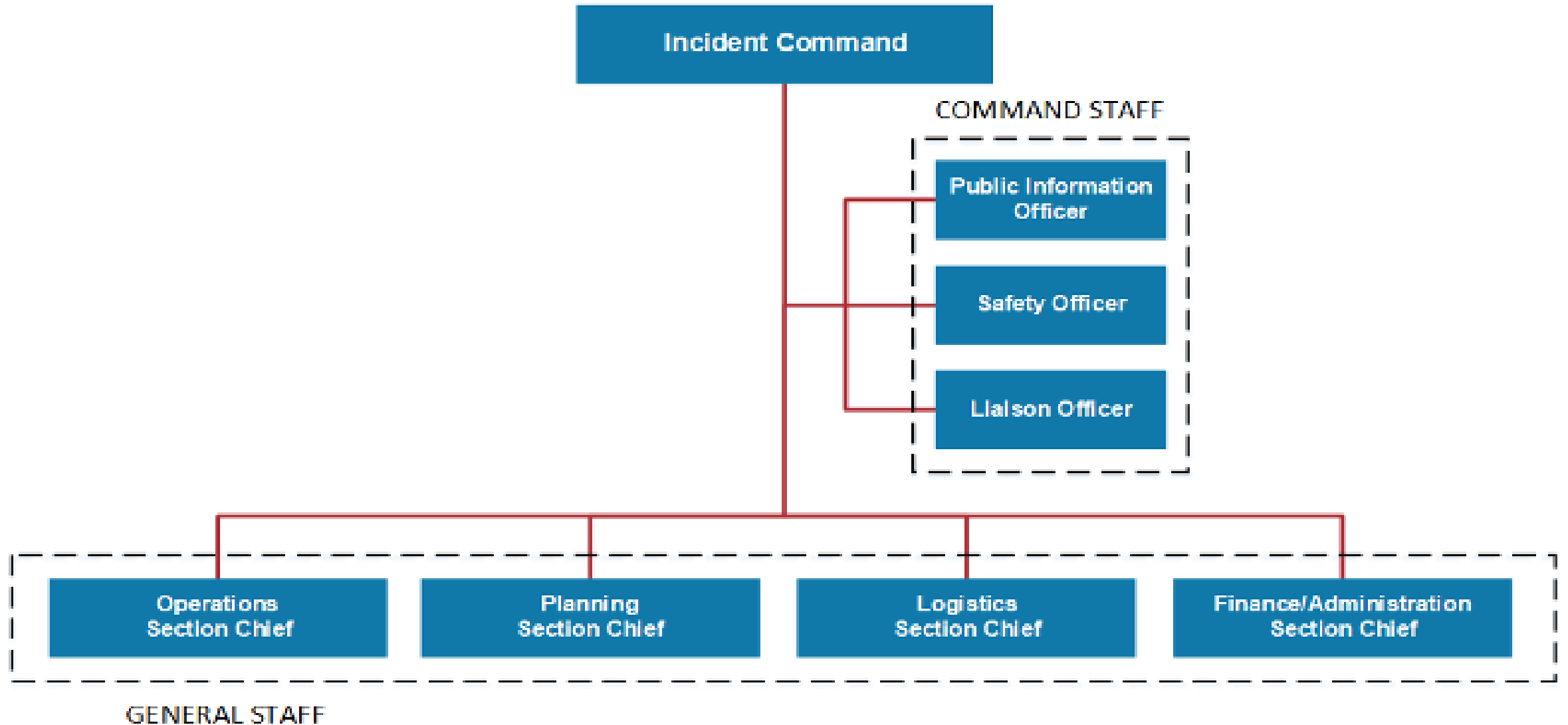


Incident Command Structure (ICS) Initiated

1. Preparedness
2. Response
3. Recovery
4. Mitigation



Incident Command Structure (ICS) Chart



Preparedness Phase

- Incident Management Team Position Alignment
- Weather Forecast Monitoring
- Incident Command System Training
- Restoration Prioritization
- Customer Communication



Response Phase

- Daily Incident Management Team Calls
- Mutual Aid Assistance - Avista & Tacoma Power
- Western Energy Institute Partnership
- Coordination Efforts- OEM, SDOT, SPU, HSD
- Sheltering - Garfield Community Center



Recovery Phase

- Final Restoration Phase
- Mutual Aid Demobilization
- Debris Removal
- FEMA- Public Assistance Program



Mitigation Phase

- After Action Review
- Emergency Management Expansion



Federal Storm Damage Assistance

- Customers (residential & business) may qualify for US Small Business Administration low-interest loans.
- Loans cover losses not fully covered by insurance or other sources.
- Applicants can apply online or receive in person assistance with the application.
- Additional disaster assistance information and online application at [SBA.gov/disaster](https://www.sba.gov/disaster).
- SBA's Customer Service Center at 800-659-2955 or email disastercustomerservice@sba.gov for more information on SBA disaster assistance.



THANK YOU



Seattle City Light