

# Seattle Promise

Gender Equity, Safe Communities, New Americans, & Education  
Committee

**March 14, 2018**



**City of Seattle**  
Jenny Durkan, Mayor



# A Call to Action...

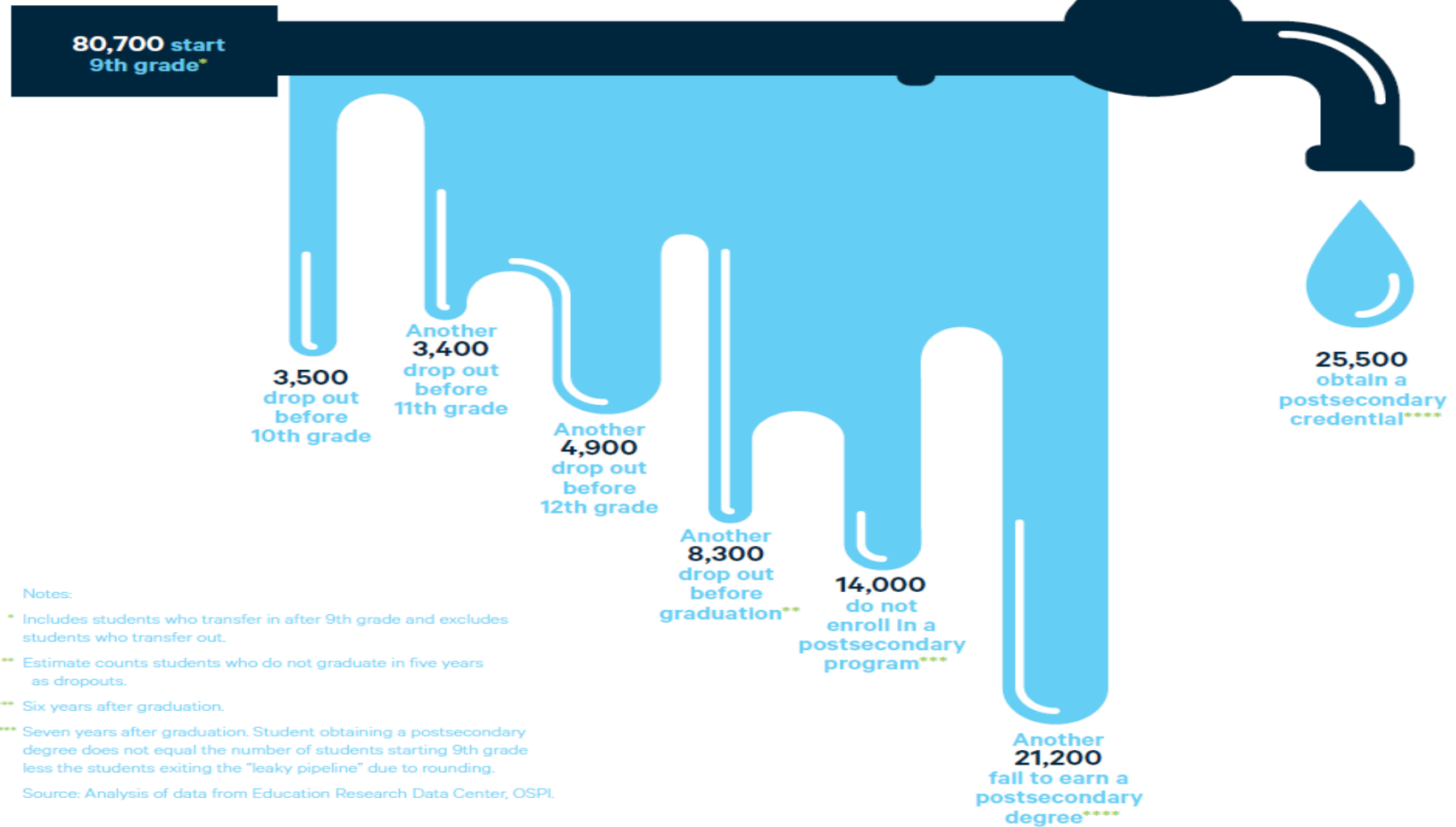
*THERE WILL BE **740,000 JOB OPENINGS** IN WASHINGTON IN THE NEXT FIVE YEARS. STATE JOB GROWTH OVER THIS PERIOD IS EXPECTED TO BE NEARLY THREE TIMES THE NATIONAL AVERAGE. THE MAJORITY OF JOB OPPORTUNITIES—PARTICULARLY THOSE THAT WILL SUPPORT UPWARD MOBILITY AND GOOD QUALITY OF LIFE—**WILL BE FILLED WITH WORKERS WHO HAVE POST-SECONDARY EDUCATION OR TRAINING.***

PATHWAYS TO GREAT JOBS  
IN WASHINGTON STATE;  
WASHINGTON ROUNDTABLE REPORT, 2016



# The “Leaky Pipeline...”

Washington students fall behind early and fall out over time.

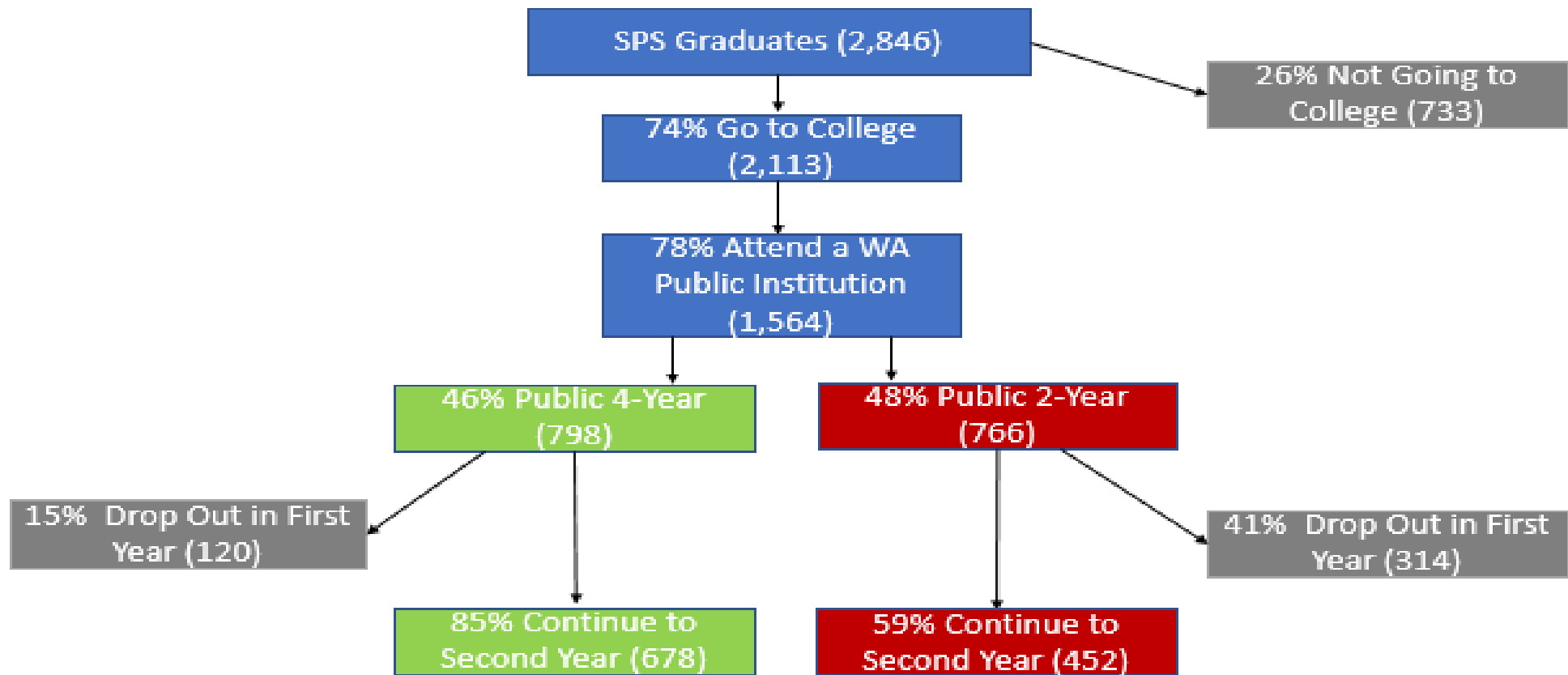


**City of Seattle**  
Jenny Durkan, Mayor

Source: Pathways to Great Jobs in WA State- WA Roundtable Report, 2016

# A Local Snapshot...

## Seattle Public Schools (SPS) Postsecondary Pathway High School Class of 2015 college-going behaviors

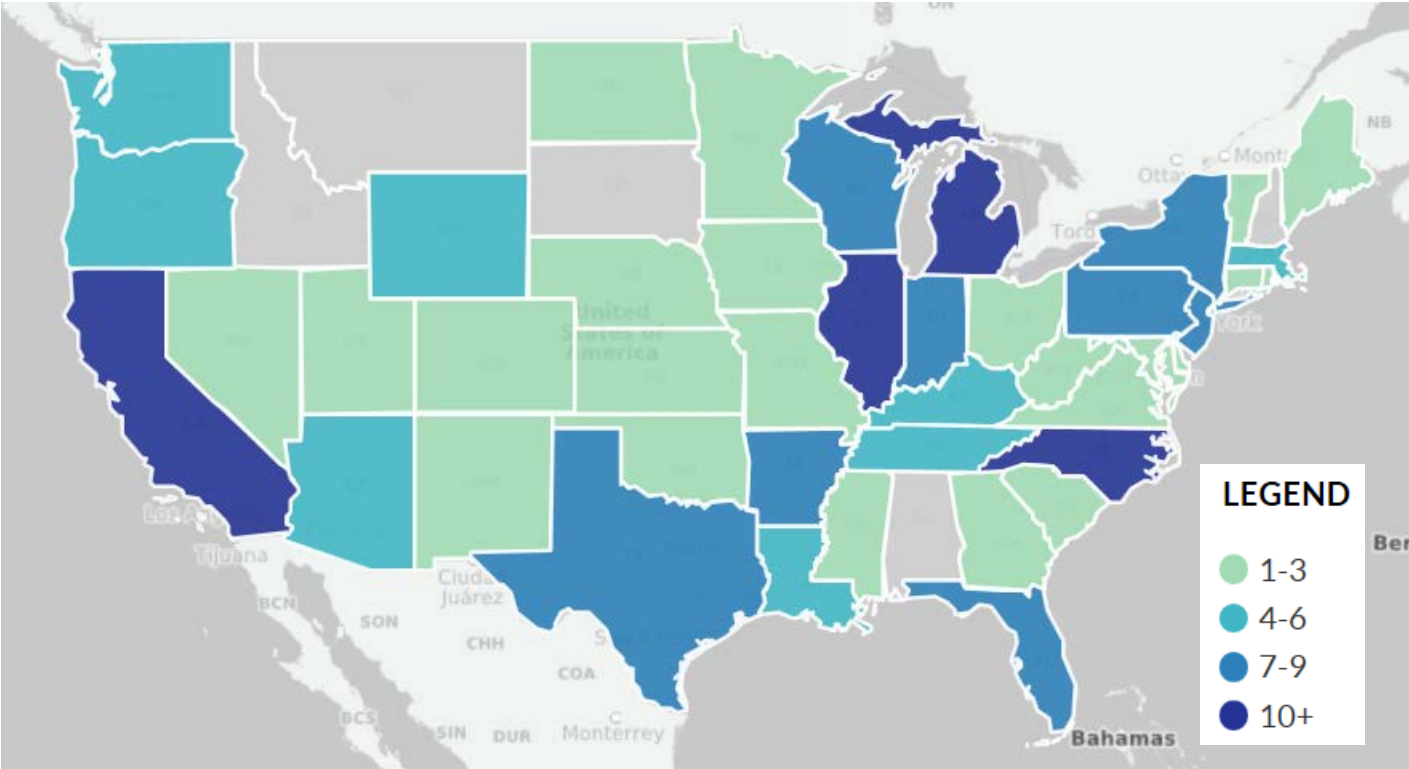


Source: [ERDC's 2015 P-20 Reports Comparing Districts](#) and [OSPI Postsecondary Enrollment](#)





# The National Landscape...

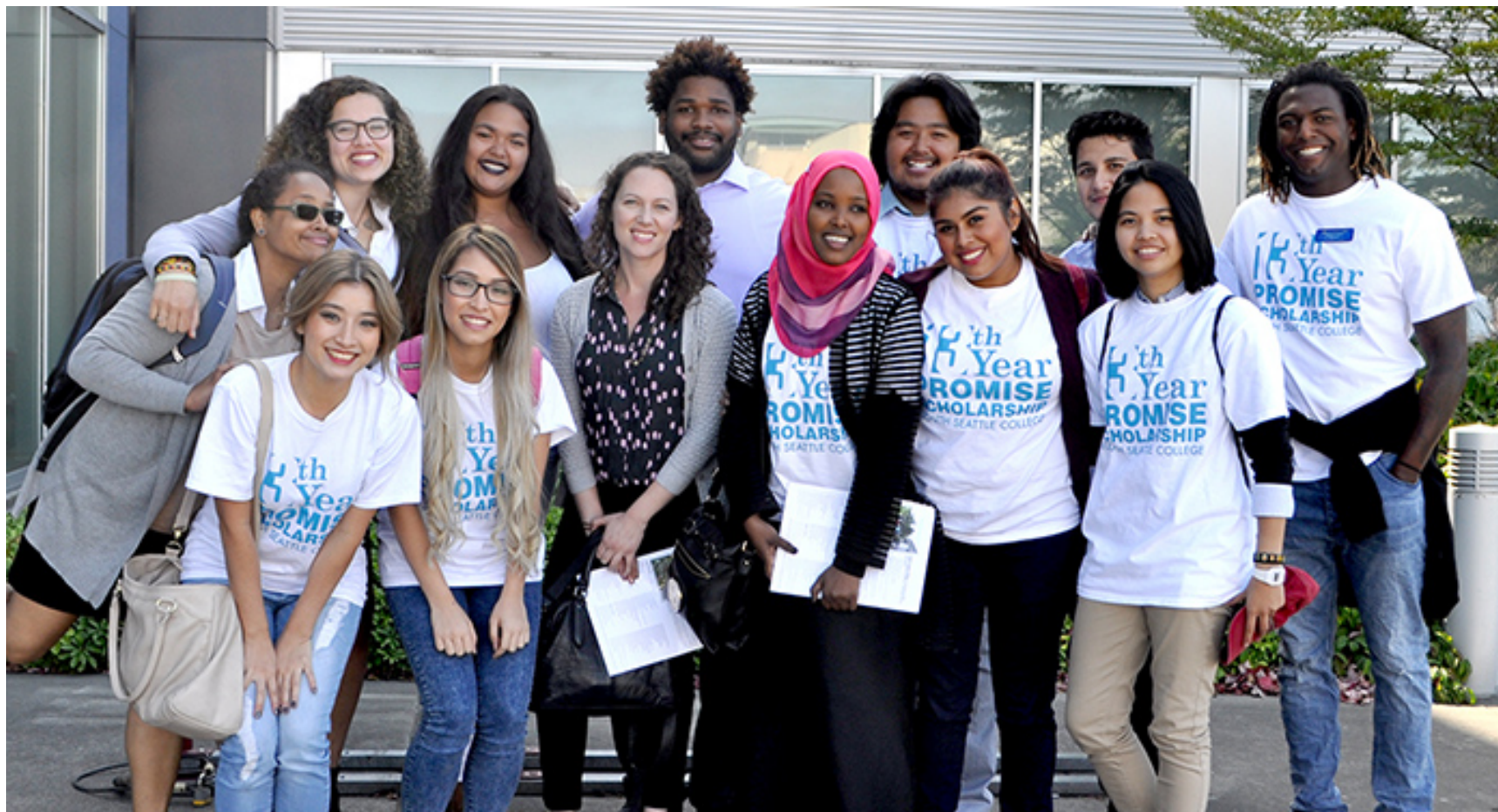


Source: [Univ. of Pennsylvania College Promise Programs Website](http://universityofpennsylvania.edu/collegepromise/programs)



**City of Seattle**  
Jenny Durkan, Mayor

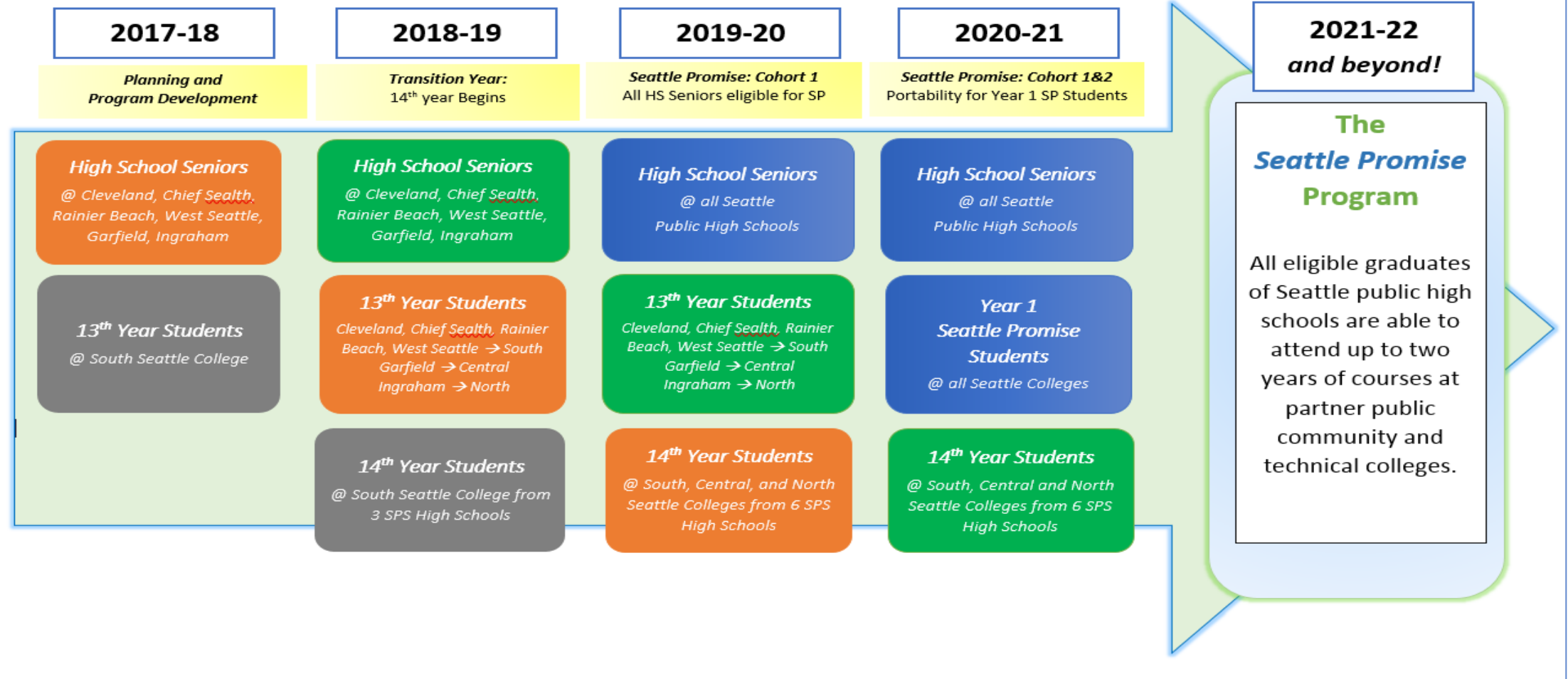
# South Seattle College: 13<sup>th</sup> Year Promise Scholarship



**City of Seattle**  
Jenny Durkan, Mayor

# Design Process Timeline

## WORKING TOWARD THE SEATTLE PROMISE...





# Seattle Promise Transition Year (2018-19)

Program	Partner Institutions	Guidelines	
13 <sup>th</sup> Year	South Seattle College Associated HS: Cleveland, Chief Sealth, Rainier Beach, and West Seattle	Eligibility	Each College determines eligibility for students enrolled in the Seattle Promise program
		Portability	Students must attend the college assigned to their partner school
		Student Supports	Funding will be provided for student supports
	Readiness Academy programming is determined by each participating institution		
	North Seattle College Associated HS: Ingraham		
	Seattle Central College Associated HS: Garfield		
14 <sup>th</sup> Year	South Seattle College	Eligibility	Maintain Satisfactory Academic Progress standards as set by the Financial Aid Office (Earn a minimum of 67% of enrolled credits per quarter <u>and</u> maintain at least a 2.0 cumulative GPA); Full-Time Enrollment; Enrolled as a 13 <sup>th</sup> Year program participant in Spring 2018; Completion of FAFSA
		Portability	During the 2018-19 academic year, the 14 <sup>th</sup> Year Scholarship can only be used at South Seattle College
		Student Supports	One-time funding for student supports





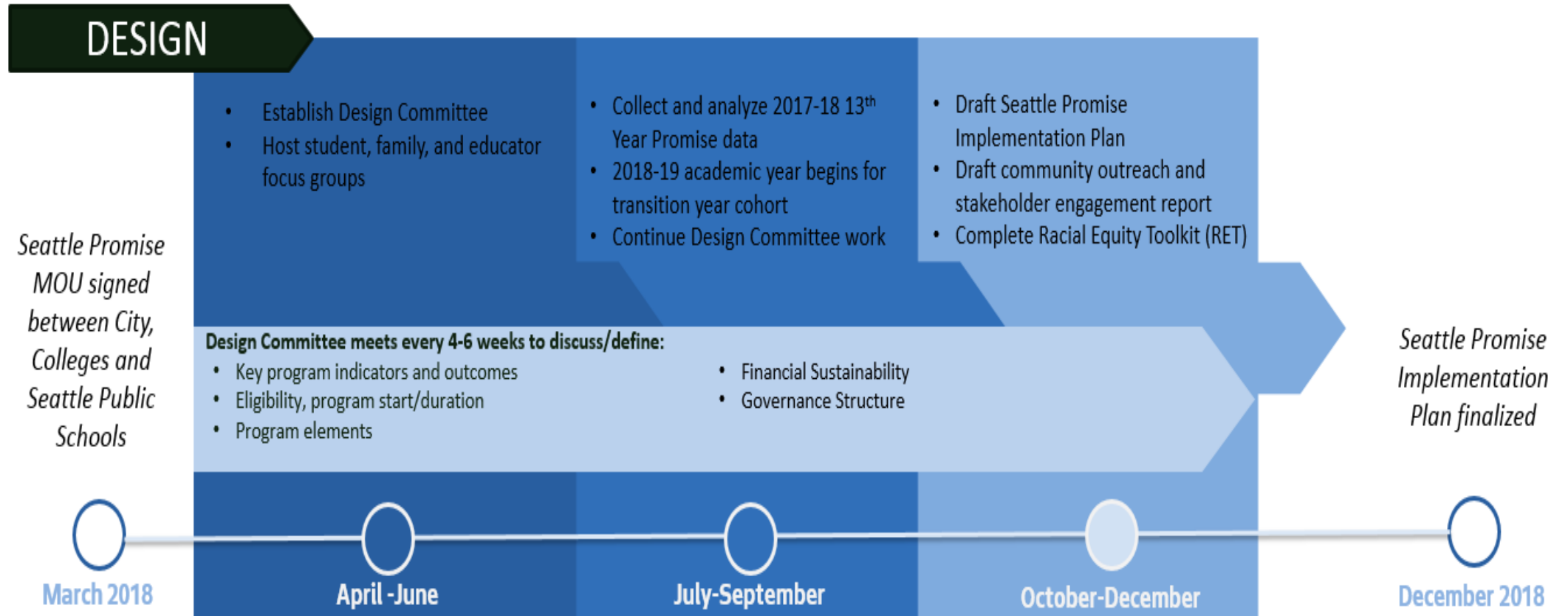


# Transition Year Budget Summary

Program	18-19
High School Staff and Program Support	\$ 452,114
13th and 14th Year Scholarships	\$ 855,000
Non-Tuition Financial Support	\$ 171,000
College Staff and Program Support Costs	\$ 297,887
<b>Total</b>	<b>\$ 1,776,000</b>

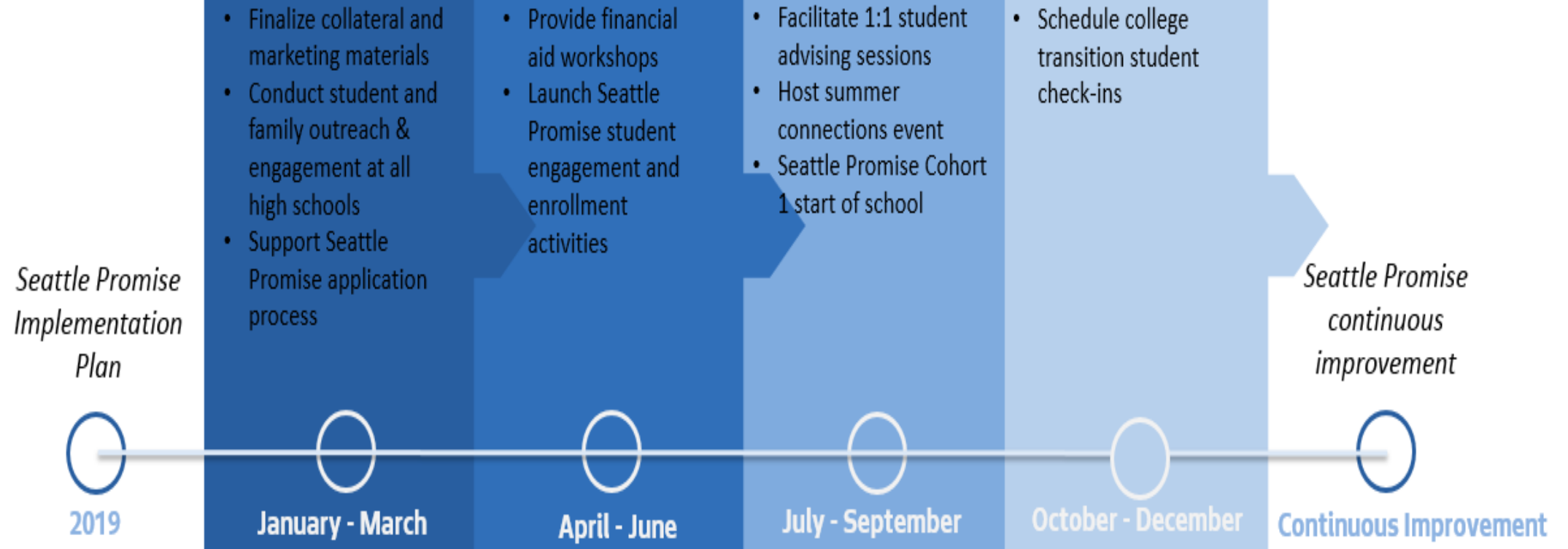


# Seattle Promise Design Committee



# Seattle Promise Implementation

## IMPLEMENTATION





# Sustaining Seattle Promise



# Questions...

## **Chris Alejano**

Policy Advisor

Office of the Mayor

Chris.Alejano@seattle.gov

## **Sheila Edwards Lange**

President

Seattle Central College

Sheila.EdwardsLange@seattlecolleges.edu

## **Dwane Chappelle**

Director

Department of Education and Early Learning

Dwane.Chappelle@seattle.gov

## **Clarence “CJ” Dancer**

Postsecondary Attainment

Policy & Program Advisor

Department of Education and Early Learning

Clarence.Dancer@seattle.gov



**City of Seattle**

Jenny Durkan, Mayor