

# Ship Canal Water Quality Project

Storage Tunnel Proviso



# Ship Canal Water Quality Project

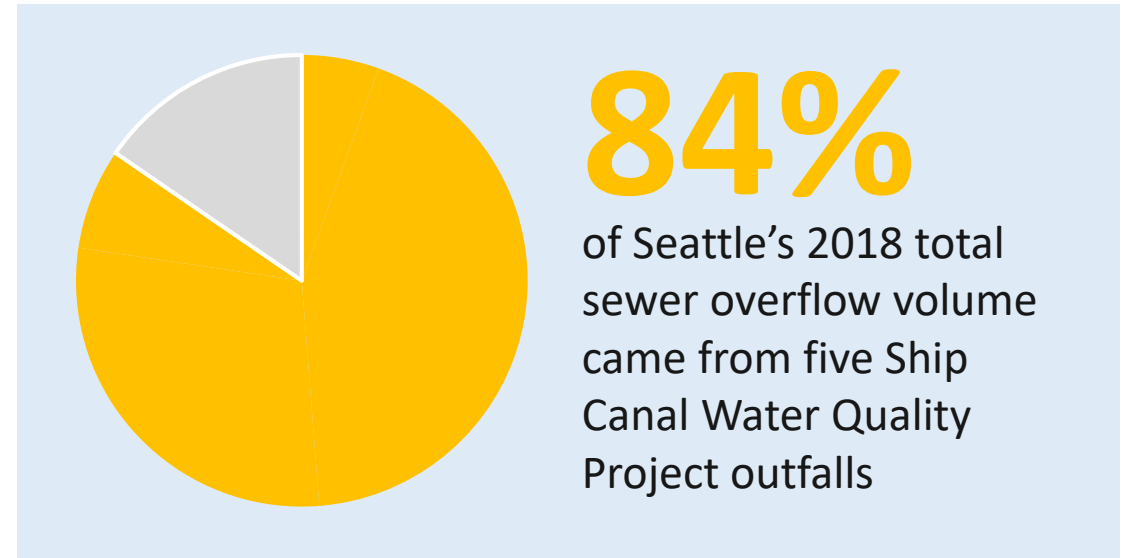
- Project Overview
- Storage Tunnel
  - Construction Package
  - Costs and Risks
- Communications next steps



# Ship Canal Water Quality Project

This project will improve water quality by reducing SPU and King County's combined sewer overflows.

- Consent decree with US Department of Justice, US Environmental Protection Agency, and WA Department of Ecology
- Joint Project: King County & City of Seattle





Seattle  
Public  
Utilities



King County

# Ship Canal Water Quality Project




**Ballard Site**

**East Ballard Site**


**Fremont Site**

**Queen Anne Site**

**Wallingford Site**

 Underground storage tunnel

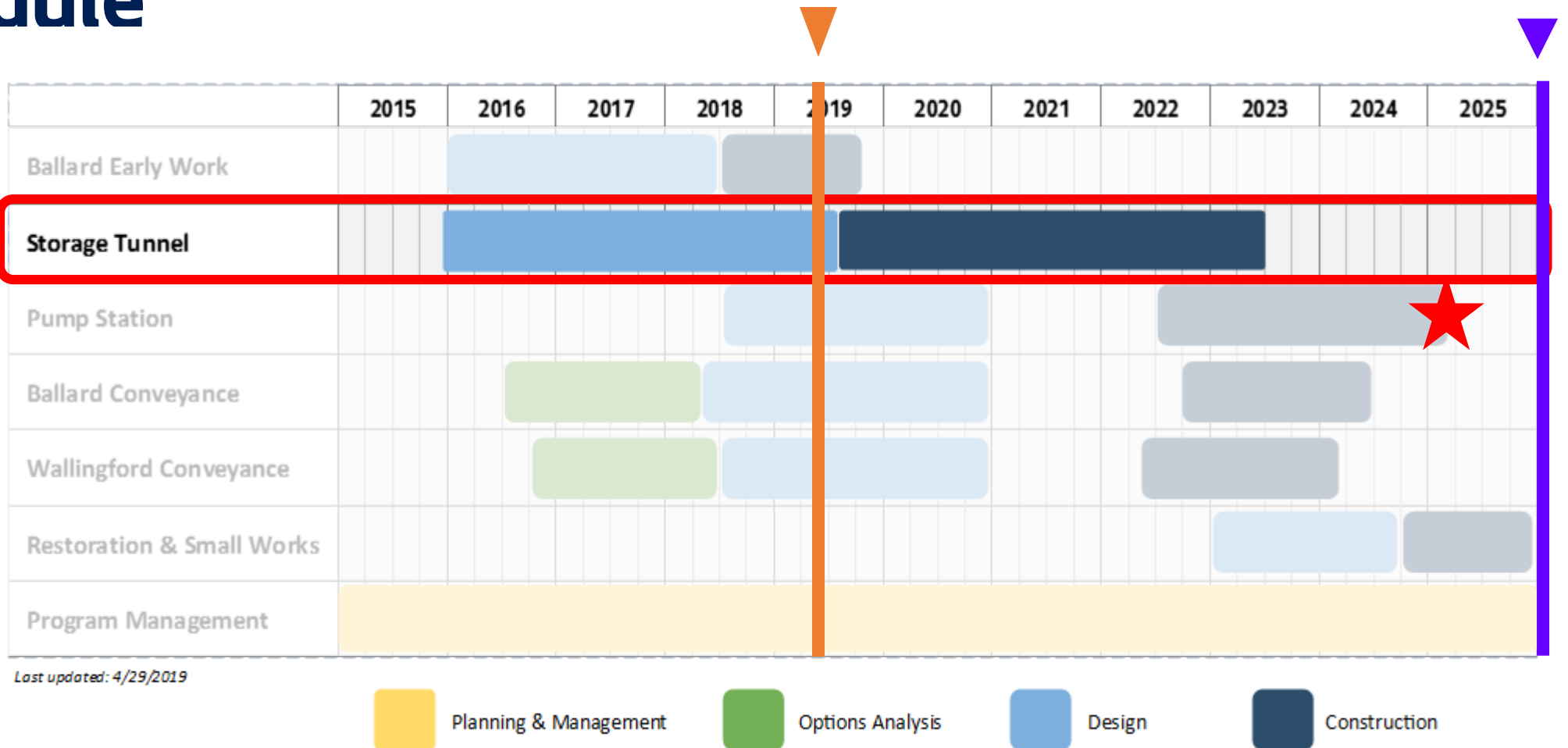
 Project elements

 Neighborhood boundary



# Schedule

Five major construction packages

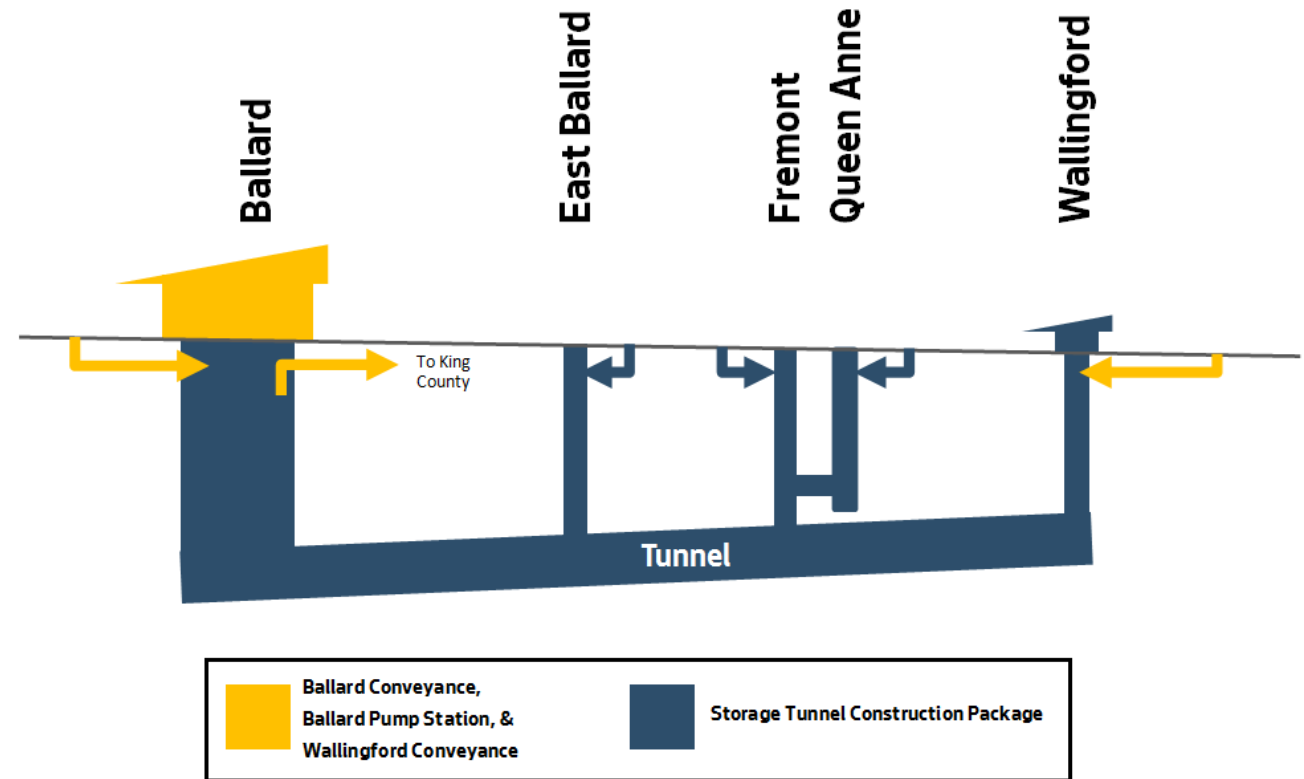


# Storage Tunnel Construction Package

Includes:

- (1) 18 ft. 10 in. dia. storage tunnel
- (5) drop shafts
- (3) conveyance projects
- (1) 8 ft. dia. tunnel between Fremont and Queen Anne

Does not include: Ballard Conveyance, Ballard Pump Station, and Wallingford Conveyance

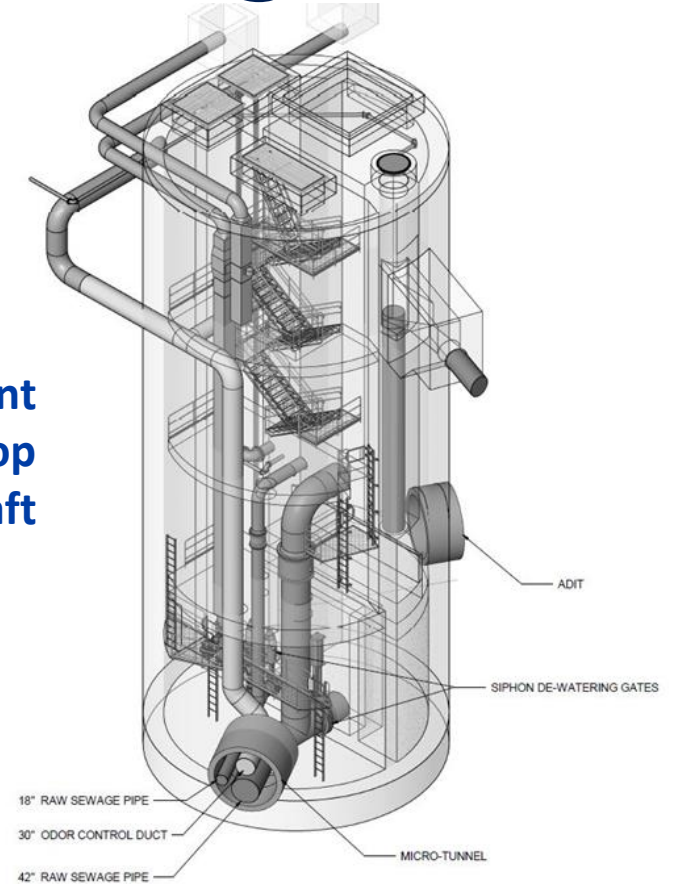




# Storage Tunnel Construction Package



Fremont Drop Shaft



# Cost Estimates

**Total Project Cost Estimate: \$570M with 70% confidence\***

**Storage Tunnel Construction Engineer's Estimate: \$218M**

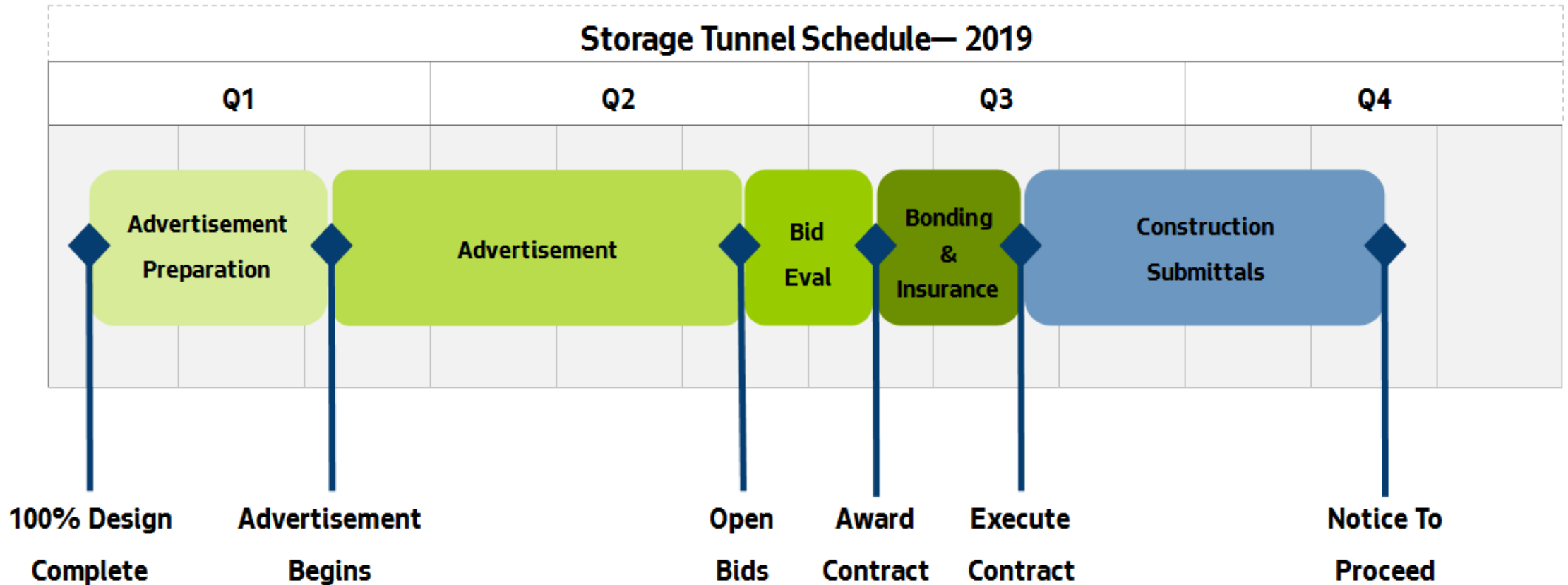
- Review by outside experts
- Benchmarked with other agencies
- Contractor outreach

\*There is a 70% chance costs will be at or below the estimated cost and a 30% chance the estimated cost will be exceeded.





# Upcoming Schedule



# Storage Tunnel Bids

## Uncertainties

- Bids above engineer's estimate

## Risks

- Getting the right contractor
- Unforeseen design issues
- Bid protests
- Bids above uncertainty range



# Communication Next Steps

- Semi-annual reports, continued
- Project update, late 2019
- Groundbreaking celebration, Q1 2020





**Seattle  
Public  
Utilities**



**King County**

## Ship Canal Water Quality Project

