

Director's Report

Sam Assefa

April 4, 2017

A New Agency

Our Mission

The Seattle Office of Planning and Community Development leads planning for citywide growth through urban design and coordinated investments to create places that people value.

Our Vision

As Seattle grows, we welcome all people, honoring our history while guiding changes to the built environment to foster healthy communities and expand opportunity for all.



OPCD Budget

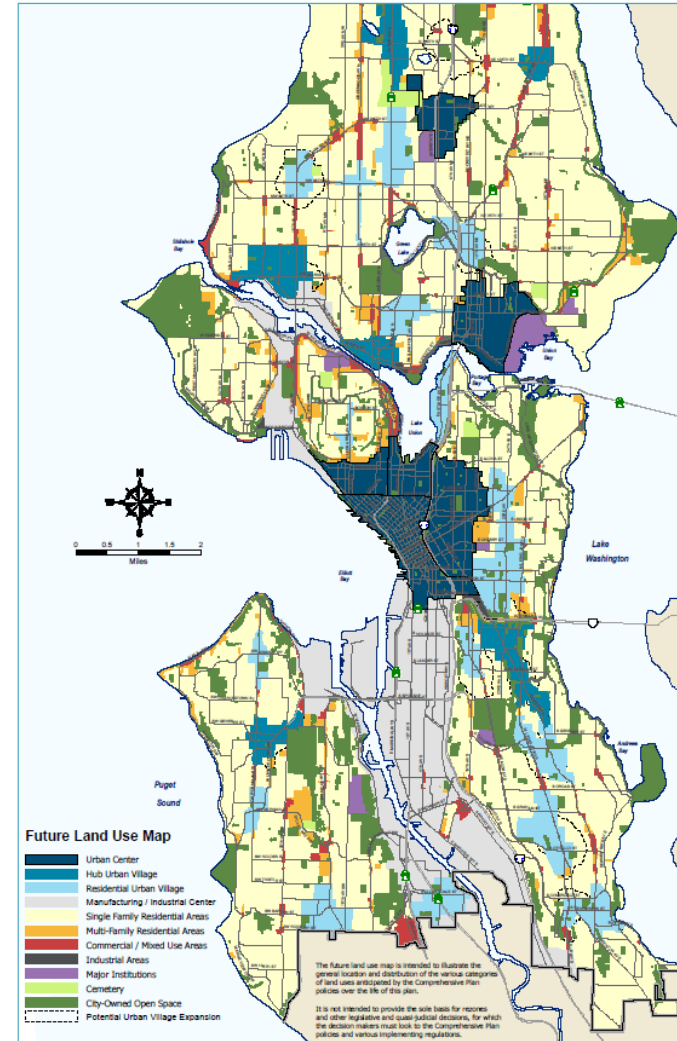
	2016 Adopted Budget		2017 Adopted Budget	
	Funding	FTE	Funding	FTE
Planning	\$6,728,061	38.50	\$6,680,471	40.00
Planning Commission	684,217	3.00	460,424	3.00
Design Commission	614,537	3.50	501,890	3.50
Total	\$8,026,815	45.00	\$7,642,785	46.50

2017 Staffing

Office of Planning and Community Development	46.50 FTE
Director's Office	10.5
Comprehensive Planning/ Research	12.0
Investment / Citywide Strategies	8.0
Research & Analysis / Comprehensive Planning	4.0
Citywide and Community Planning	17.5
HALA	6.0
Community Planning	6.5
Community Planning: Equitable Development Initiative	5.0
Seattle Planning Commission	3.0
Seattle Design Commission	3.5

2016-17 Completed Projects

- **Mandatory Housing Affordability framework**
- **Seattle 2035 Comprehensive Plan**
- **Seattle 2035 Growth and Equity Analysis**



2016-17 Completed Projects



- Ballard rezone
- Lake City rezone
- Bitterlake rezone
- U District rezone
- North Delridge Action Plan
- Rainier Beach resolution

Major projects in 2017-18

- MHA rezones: Uptown, Chinatown/ID citywide
- Design guidelines
- One Center City and the Downtown public realm
- Seattle Center
- Citywide public spaces
- Chinatown/ID coordinated community development



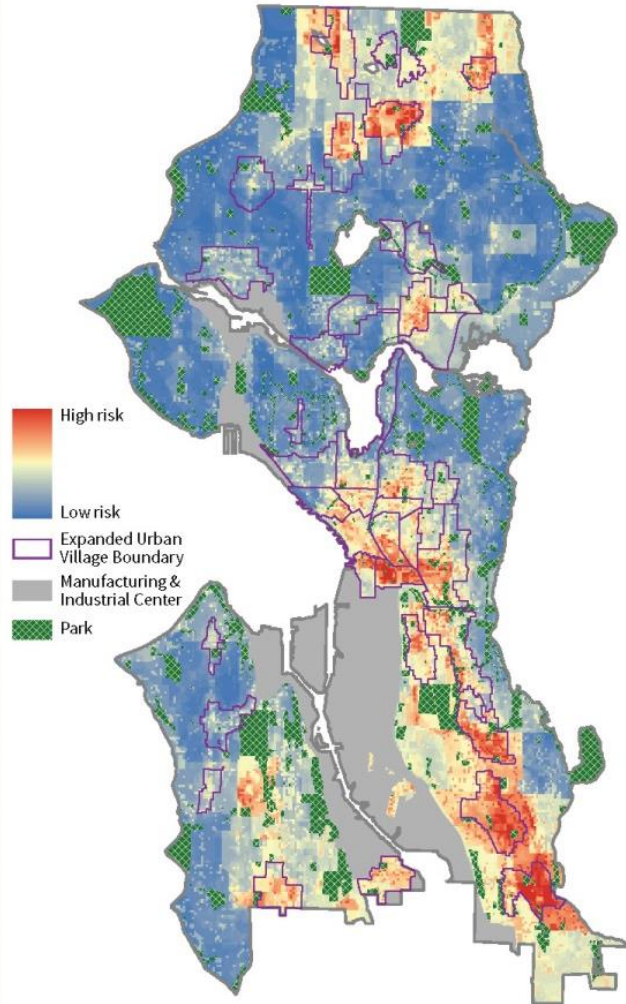
Major projects in 2017-18

- Equitable Development Initiative
- Capital Cabinet
- Duwamish Valley
- Transit Oriented Development
- Sound Transit 3
- Annual Comprehensive Plan amendments

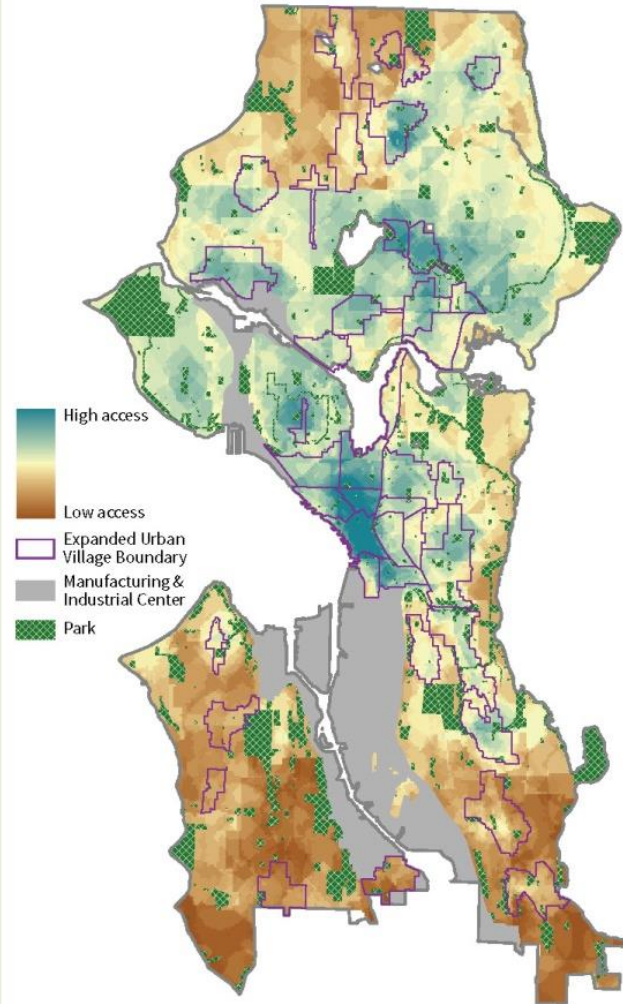


Community Planning Priorities

Displacement Risk Index



Access to Opportunity Index



- 1) Historically disadvantaged and at risk for residential, economic and cultural displacement
- 2) Planning and capital investment coordination in support of a more equitable city

Ongoing

- Regional and Comprehensive Planning
- Population and Demographics
 - Fair Housing
 - Equity and Displacement analysis
- GIS analysis

Growth Management Act
Statewide Goals/Policies
Guidance for Citywide Comprehensive Plans



PSRC Vision 2040
Regional Growth Goals
Regional Framework for Local Decisions
Multi-County Planning Policies



King County Planning Policies
Countywide Goals/Policies
Countywide Growth Management



Seattle Comprehensive Plan
Citywide Goals/Policies
Neighborhood Goals/Policies
Six-Year Capital Investment Plan



OPCD

Community Engagement



Seattle
Office of Planning &
Community Development

Edward B. Murray, Mayor | Samuel Assefa, Director



Monthly news from the Office of Planning and Community Development

FEBRUARY 2017



Greetings from the Seattle Office of Planning and Community Development!

Here at OPCD, we are constantly seeking to improve our efforts to reach out to the community, share information, and learn more about issues important to you. This monthly newsletter will help us provide updates on the issues that are shaping our city.

Thanks for your interest. I look forward to working with you as we build a more equitable and vibrant Seattle for all.

Regards,
Sam

Samuel Assefa, Director



Join Us Urban Innovations OPCD Speakers Series

ARE WE THE VICTIMS OF OUR OWN SUCCESS?

West Coast cities seek
affordable housing solutions

TUESDAY
March 7, 5:30 p.m.

The Seattle Public Library
Central Library
1000 4th Ave
Free admission

Gil Kelley General Manager, Vancouver Planning, Urban Design and Sustainability
Joe Zehnder Chief Planner, Portland Bureau of Planning and Sustainability
John Rahaim Director, San Francisco Planning Department
Samuel Assefa Director, Seattle Office of Planning and Community Development
Steve Walker Director, Seattle Office of Housing

Moderated by KUOW's Joshua McNichols



OPCD



Thank you

Sam Assefa, Director

Samuel.Assefa@seattle.gov