

EXHIBIT F Occidental Square Legal Description

Lots 5,6,7,8, Block 7, Town of Seattle, as laid out by D.S.Maynard, commonly known as D.S. Maynard's Plat of Seattle, as per plat recorded in Volume 1 of Plats, page 23, records of King County; Except the east 9 feet thereof for street; Situate in the City of Seattle, County of King, State of Washington

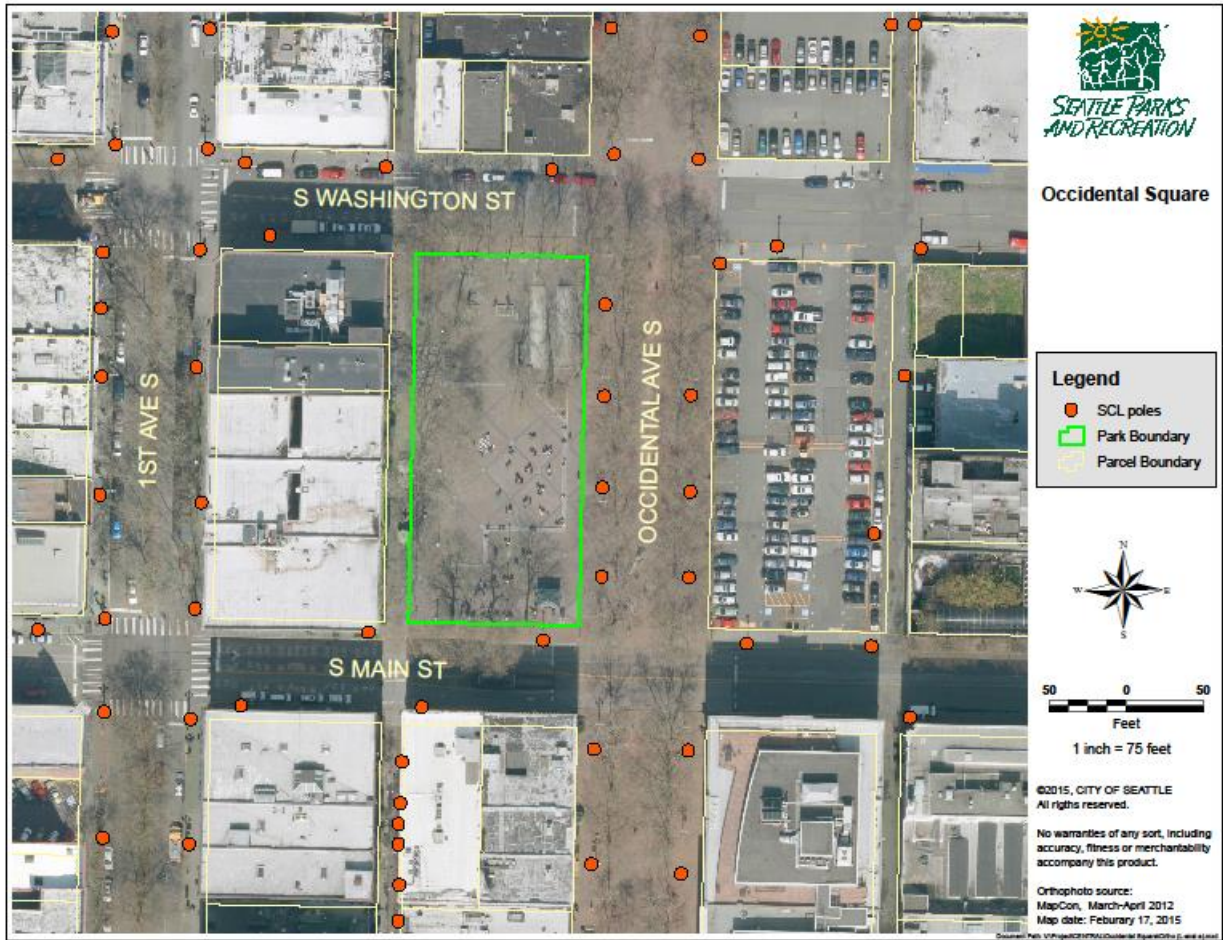
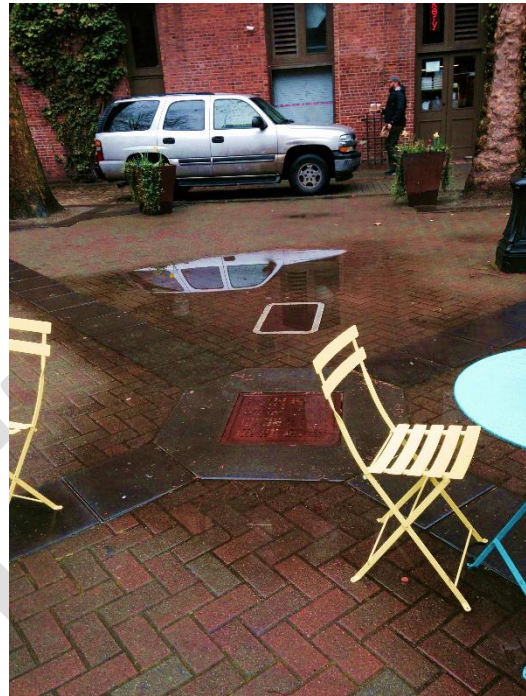
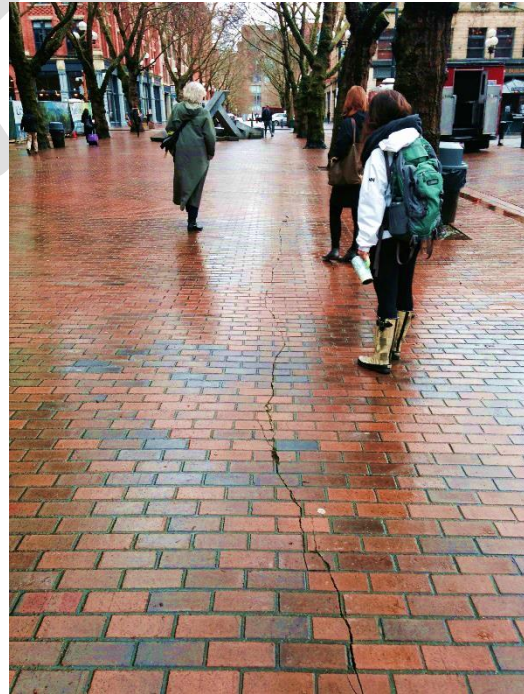


EXHIBIT F Occidental Square As is Conditions



Poor Drainage in the Southwest portion of the park near the information kiosk especially.



Cracked pavers the entire length of Occidental Ave South.



Cracked Pavers around several of the trees and bollards.



Cracked Pavers at the north entryway off of South Washington Street.





Poles from removed benches need to be addressed.



Tree lights limited to 6 months/year during the winter months, unless approved by SPR.

EXHIBIT F Westlake Park Legal Description

Lots 1 and 4 and that portion of Lot 5 lying Westerly of Westlake Avenue, as now established, Block 19, A.A. Denny's 3rd Addition to Seattle and the westerly 70 feet of vacated Westlake Avenue as established by City of Seattle Condemnation Ordinance 7733, and vacated under Ordinance 124014, between the southerly margin of Pine Street and the easterly margin of 4th Avenue, all in Block 19 Addition to the Town of Seattle as laid out by A.A. Denny (commonly known as A.A. Denny's 3rd Addition to the City of Seattle) as per plat recorded in Volume 1 of Plats, page 33, Records of King County, Washington.

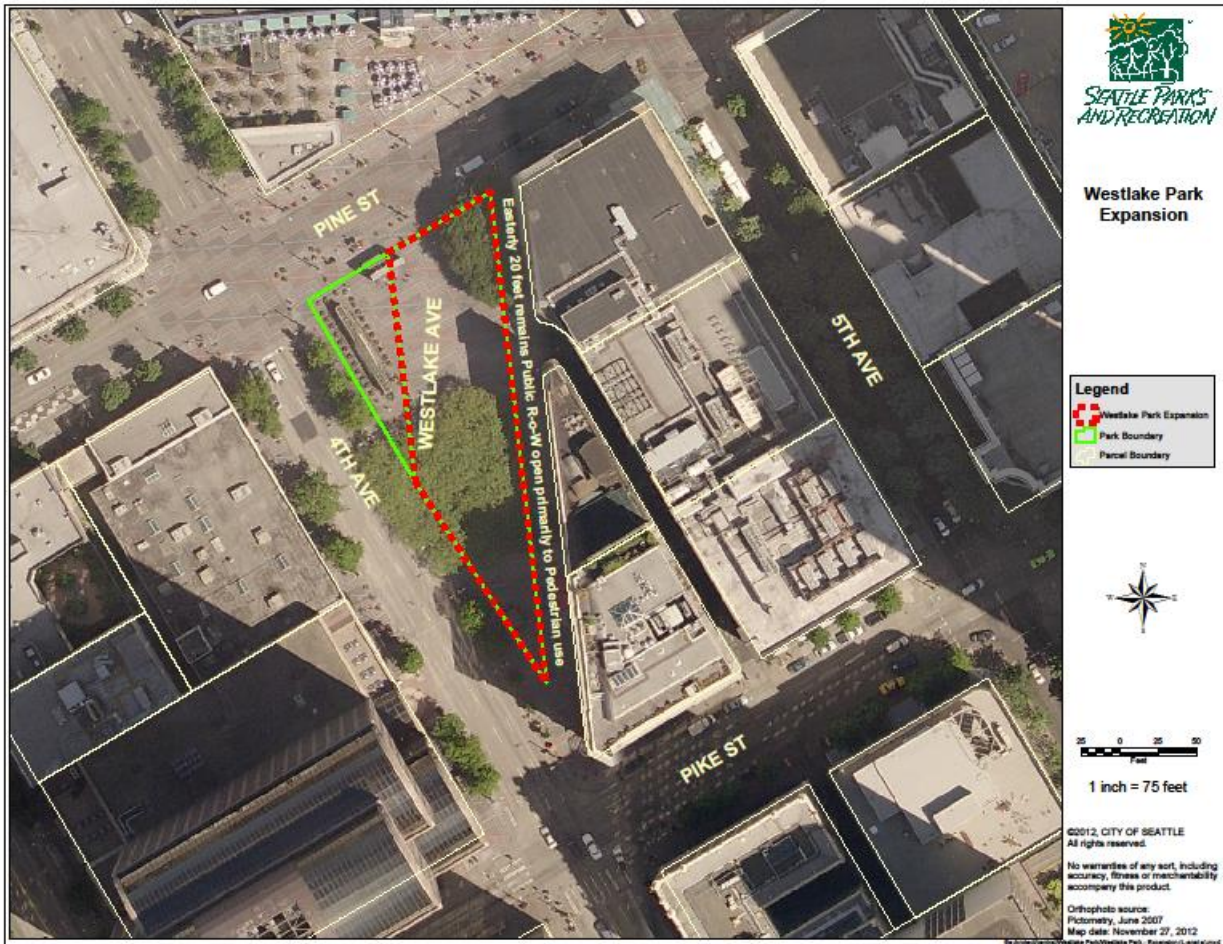
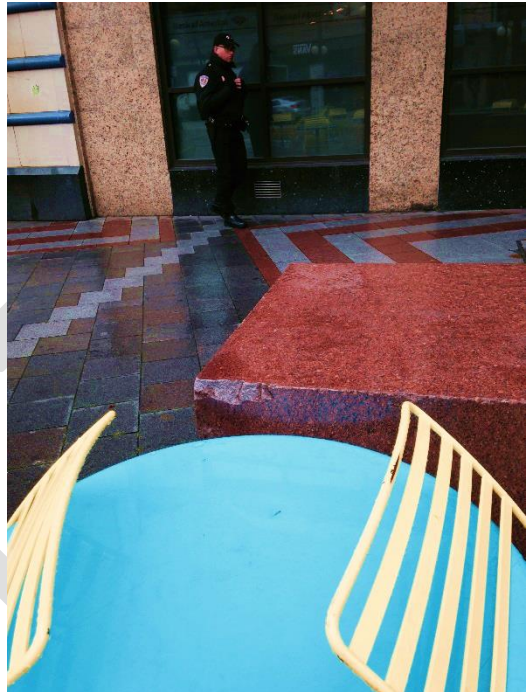
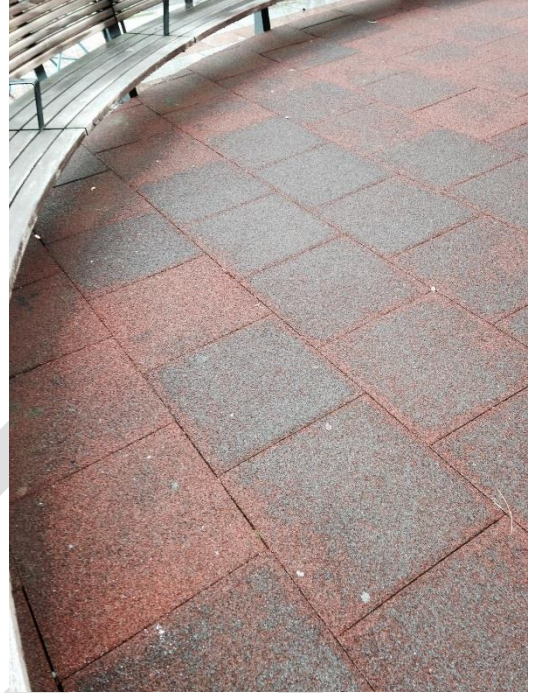
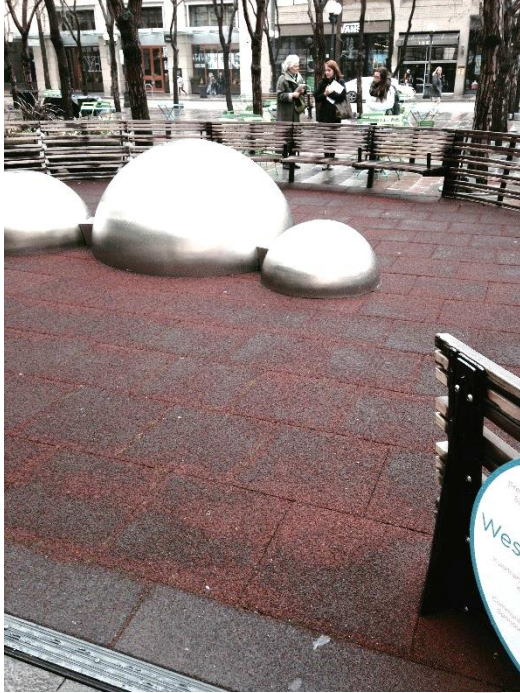


EXHIBIT F
Westlake Park As is Conditions



Corners of Seven Hills sculptures at Weslake Park have chips and damages to the blocks.





Play area surfacing is somewhat deteriorated.



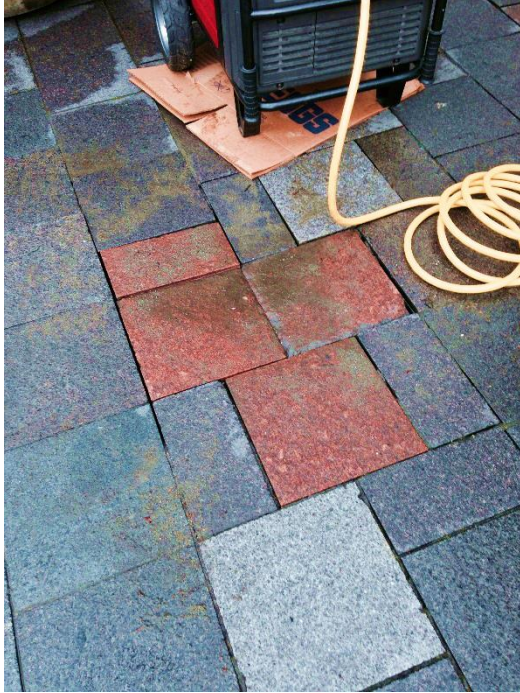
SPR signs need improvement. Two trees are missing from the center of the park.



Light base is cracked. Some electrical boxes do not seem to be working, small amount of graffiti.



Drain grate is clogged and damaged.



Pavers are loose and broken from truck access traffic off of Pine Street. Food trucks need to be using oil pans while parked.

