

January 23 2018

# Human Services, Renters Rights, and Equitable Development Committee Briefing

## **Briefing Objectives:**

- EDI & EDI Fund background
- Round 2 timeline

# Equitable Development Initiative

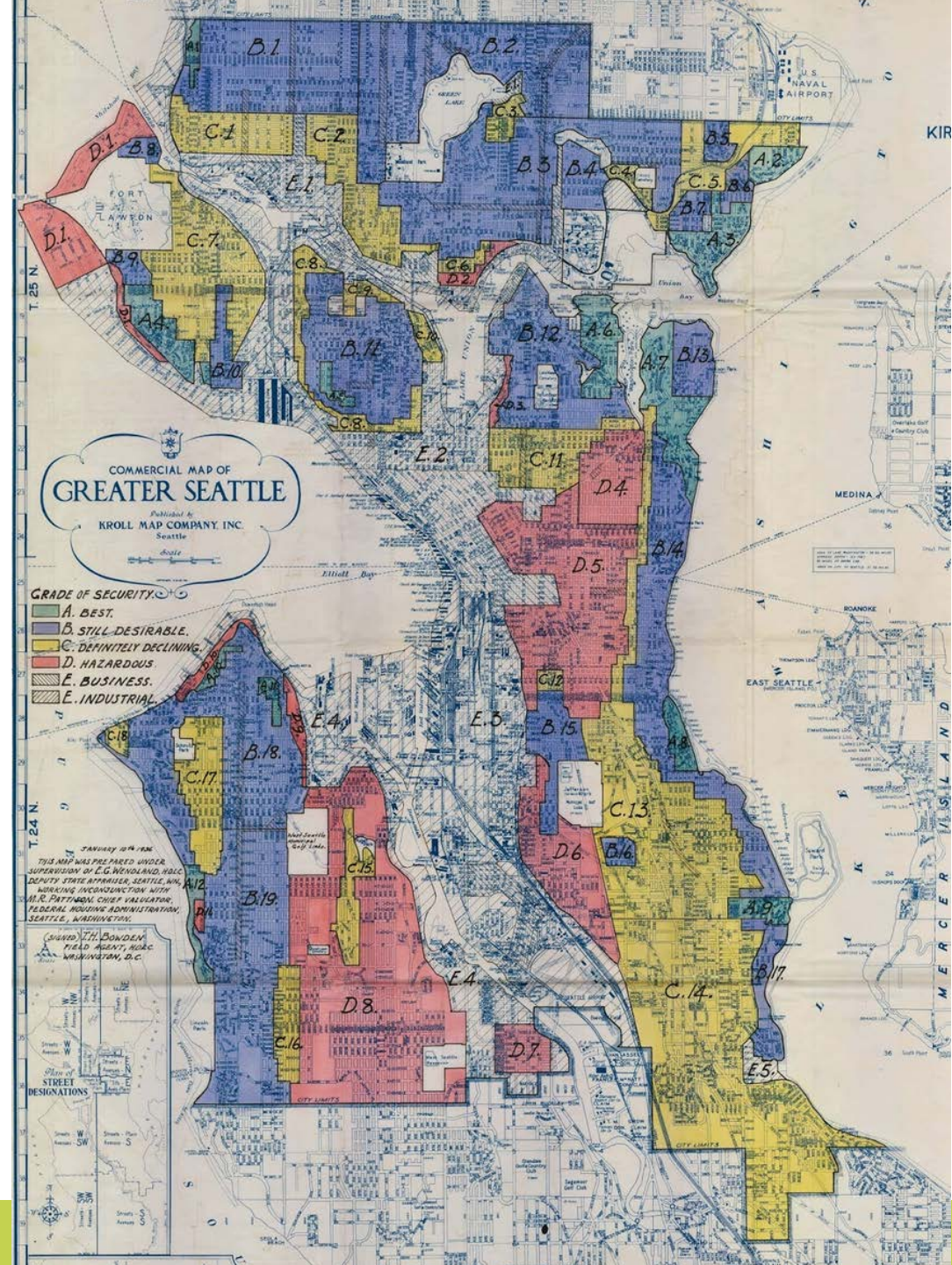
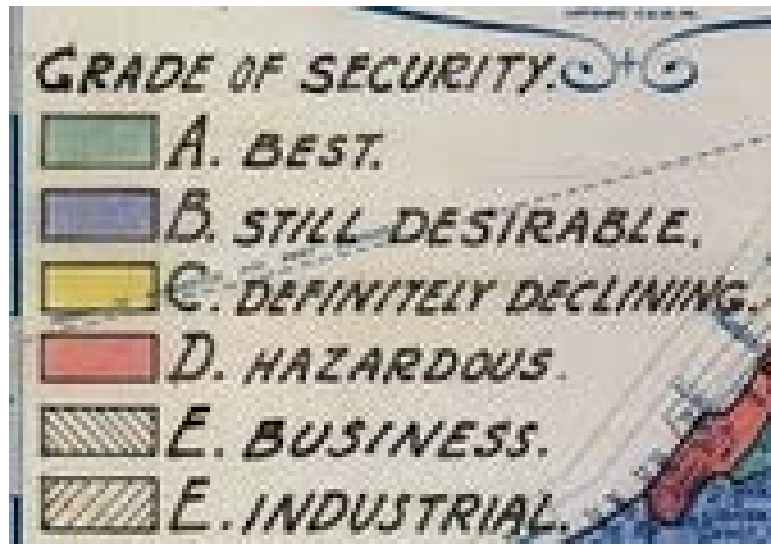
- Equity Analysis as companion to the EIS to inform Growth Strategy
- Race and Social Equity Goals and Policies in the Comprehensive Plan
- Equitable Development Implementation Plan

# Equitable Development Implementation Plan

- Equitable Development Framework
- Systemic Change
- Targeted strategies: Place-based and citywide
- Stewardship

# Redlining in Seattle

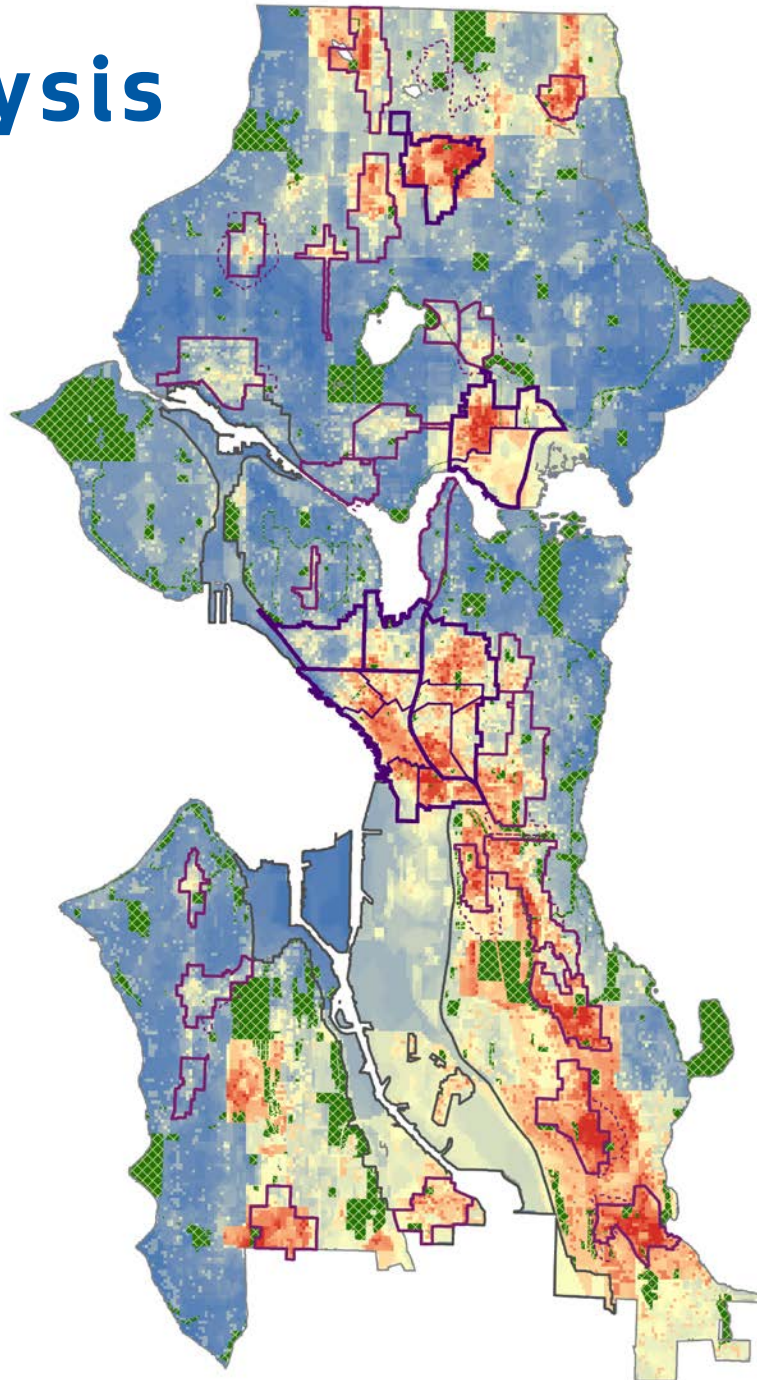
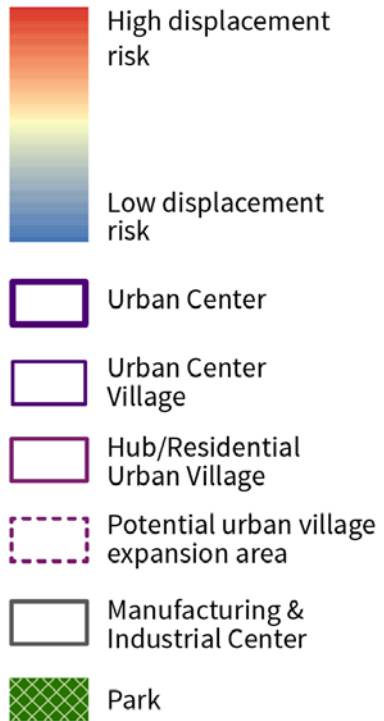
Investment decisions made by previous generations contributed to the inequities communities experience today.



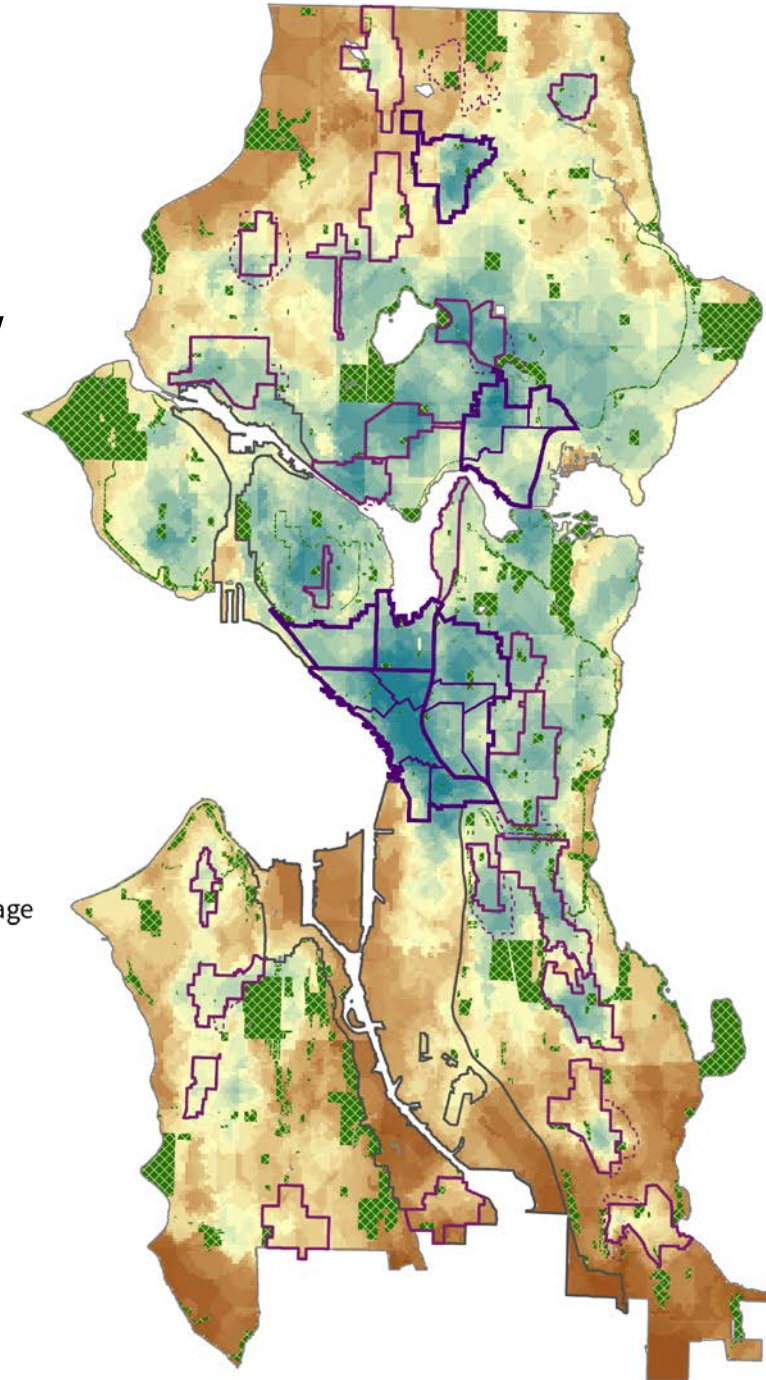


# Equity Analysis

## Risk of Displacement



## Access to Opportunity



# Equitable Development Framework: Strong People, Strong Communities

Strategies to achieve community stability and resilience in the face of displacement, and great neighborhoods with access by all:



Advance economic mobility and opportunity.



Promote transportation mobility and connectivity



Prevent residential, commercial, and cultural displacement.



Develop healthy and safe neighborhoods



Build on local cultural assets.



Provide equitable access to all neighborhoods

# Targeted strategies that mitigate high displacement risk

Place-based strategies that

- Advance economic mobility
- Prevent displacement
- Build on cultural assets

Located in high risk displacement neighborhoods such as:

- Rainier Beach/Othello
- Central Area
- Chinatown/International District/Little Saigon
- Lake City/Northgate
- South Park
- Westwood/Highland Park

# EDI Values

- Centering communities most impacted by displacement
- Community-driven strategies
- Acknowledging historic injustices
- Accountability
- Leverage
- Flexibility and interdependence
- System change



# Initial EDI Projects Status

Rainier Beach  
Food  
Innovation  
District

---



Southeast Seattle  
Multicultural  
Community Center

**SOUTHEAST ECONOMIC  
OPPORTUNITY CENTER**

Little Saigon  
Landmark Project

William Grose Center  
for Cultural Innovation

OPCD

# Equitable Development Initiative Fund

Investment in targeted place-based strategies

## FUNDING

- \$16M from City Plaza sale and
- \$430,000 CDBG for 2018
- \$5M annually from AirBNB tax starting 2019

## WHY

Address historic and market inequities through investing in projects and programs that mitigate displacement and increase access to opportunity.

## HOW

- Community Capacity Development
- Project Development

# Accessing EDI Round 2 funds:

\$5.5 million available from Equitable Development Initiative fund

1. Initial Approval
2. Capacity-Building
3. Capital investments (ex. acquisition or construction funding).

	Capacity-Building	Pre-development	Acquisition/Capital	Total Cap
Per Project	N/A	\$250,000*	\$1 million	\$1 million
Per Organization	\$75,000/year	N/A	N/A	N/A

Multiple stages can happen at the same time.

# EDI Scoring Ex. Depth of Relationship

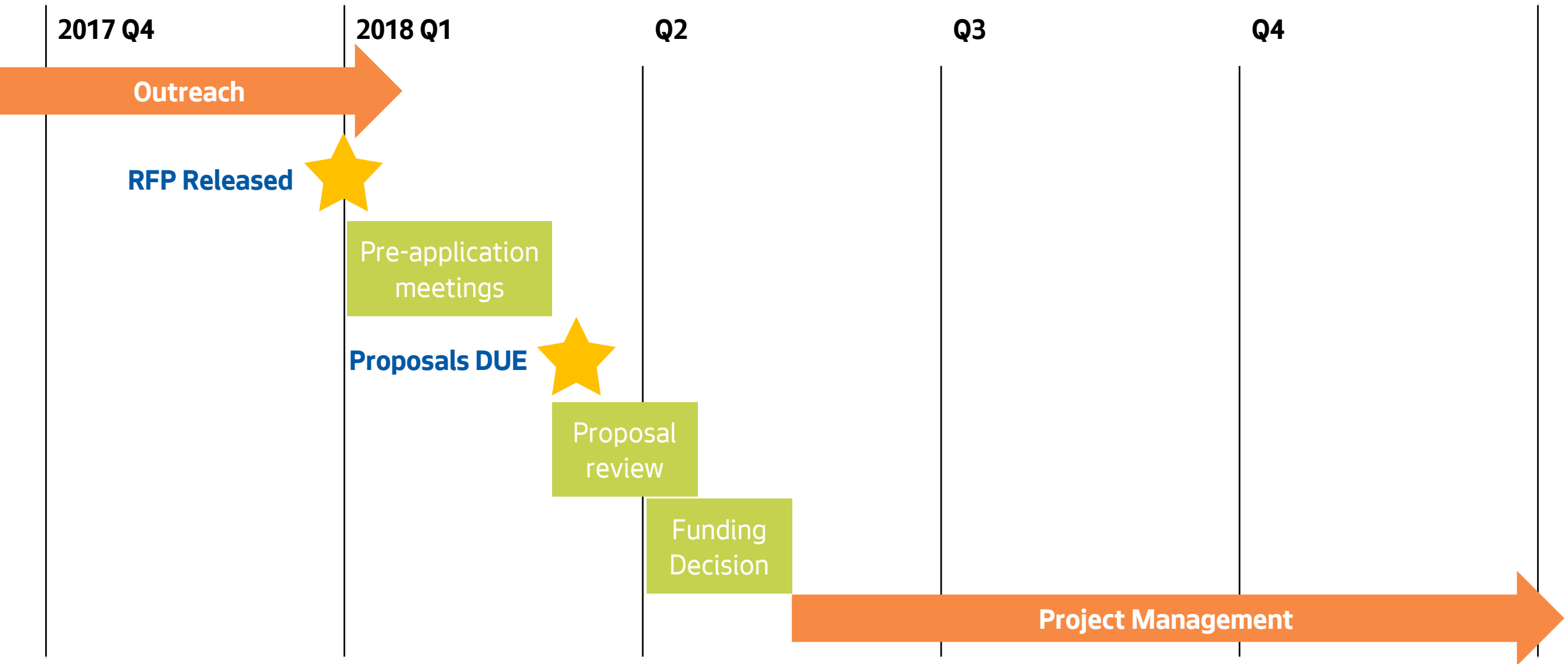
Strong (deserves high score)	Weak (deserves low score)
Does the leadership (Board and Executives) reflect the community being served?	Is there significant disparity between the organization's staff and community?
Does the organization focus on anti-displacement or community development work?	Is this proposal a departure from the org's founding mission and purpose?
Is the proposal the result of previous community efforts?	Was the proposal developed solely in the context of the EDI funding round?
Does the total proposed budget adequately resource all collaborative partners?	Does the collaboration rely on the unreimbursed work of partner organizations?
Does the organization demonstrate clear reasoning as to why they are leading the work?	Are there other organization in the area that would potentially do a better job as the project sponsor?



# EDI Scoring Ex. Displacement Risk

Strong (deserves high score)	Weak (deserves low score)
Does the project affect a geography identified in the EDI's Risk of Displacement Index?	Does the project not address a community experiencing or at risk of displacement?
Has the focus community been the target of discriminatory public policy?	Does the project not address systemic discrimination?
Has the neighborhood been subjected to historic injustices that contribute to modern disparities?	Does the project not address historical inequities?

# Funding Timeline



# Future Funding Rounds

- 2018 - Equity Analysis of previous rounds
  - Do current projects have enough resources to be successful?
  - Are there inequities that resulted from the current process that need to be addressed?
  - Are there alternative strategies for deploying funds besides competitive funding rounds?

**Together we can leverage our collective resources  
to create communities of opportunity for  
everyone, regardless of race or means.**



**And all communities are able to determine  
their own futures.**

**OPCD**



The background features a detailed view of a classical building facade, including a prominent column on the left and several windows with decorative moldings. The entire image is overlaid with a semi-transparent blue filter. A white rectangular border is centered on the page, containing the text.

# Background Q&A