

# The Capitol Hill EcoDistrict:

promoting community health & resiliency





# EcoDistrict Steering Committee

Alicia Uhlig  
Catherine Hillenbrand  
Charles Bower  
Chasten Fulbright  
Clayton Smith  
Erik Rundell  
Erika Melroy  
Heather Burpee  
Ian Siadak  
Janet Shull  
Joe David  
Julie West  
Lauren Rochholz  
Leon Garnett  
Liz Dunn  
Matthew Combe  
**Michael Mariano, Co-chair**  
Michael Wells  
Michelle Caulfield  
**Neelima Shah, Co-chair**  
Rob Schwartz  
Whitney Fraser

GGLO  
CHH Board of Directors  
CBRE/Group Health  
Blanton Turner  
Sustainable Capitol Hill  
EcoNorthwest  
Recology CleanScapes  
University of Washington - IDL  
Seattle Central Community College  
City of Seattle - DPD  
Point 32  
Seattle King County Public Health  
Seattle University  
Centerstone  
Dunn + Hobbes  
Seattle 2030 District  
Schemata Workshop  
Capitol Hill Chamber of Commerce  
City of Seattle - OSE  
Bullitt Foundation  
Seattle University  
Capitol Hill Champion

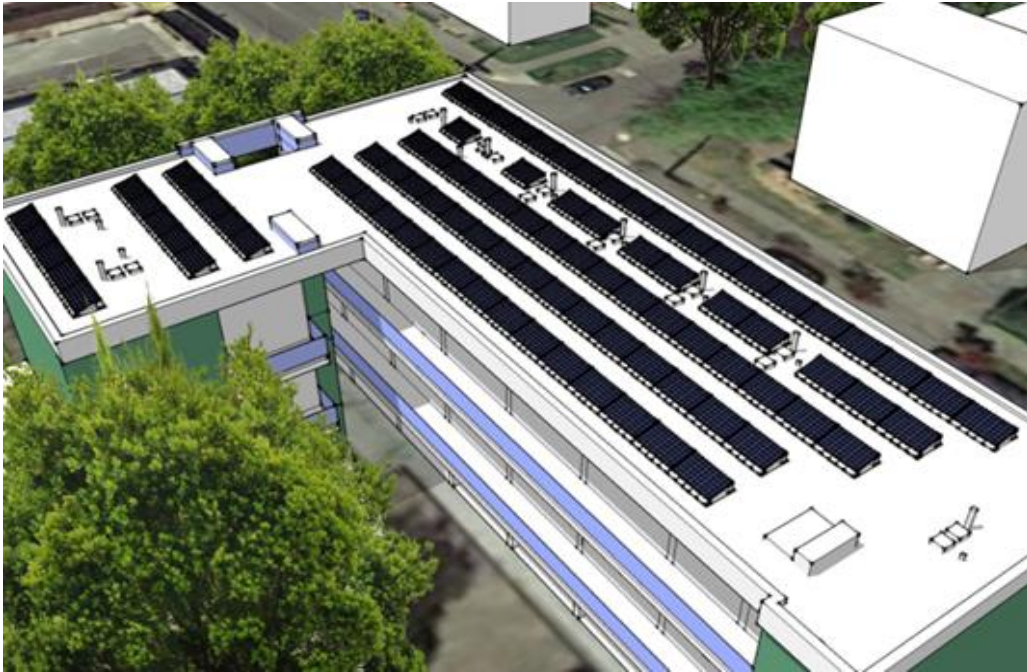
# Resolution 31562

“...the City of Seattle will support the Capitol Hill EcoDistrict as a framework and agent for advancing City sustainability goals within the EcoDistrict boundaries.”

# ECODISTRICT INDEX

Target for 2030	Baseline
Reduce building EUI by 50%	1,066,692,883 kbtu/year
Reduce building potable WUI by 50%	576,817,315 gallons/year
Achieve 70% waste diversion	44%
Achieve 21% tree canopy cover	13%
Achieve 100% of district within 1/4 mile of park	94%
Achieve 100% of district within 1/2 mile of grocery store	97%
Double P-Patch plots within walking distance	89
Double farmers market use by all incomes	Shopper Count Total 73,000, EBT 2,800
Achieve 0 serious injuries, fatalities from traffic collisions	1 fatality, 12 serious injuries
Reduce SOV commute rate for residents to 15%	31%
Double transit boardings and alightings	31,042
Increase pedestrian traffic at selected intersections by 33%	37,453
Triple bicycle traffic at selected intersections	3,667
Achieve < 15% income spent on transportation	All block groups
Achieve < 30% income spent on housing	41%
Public comment by people of color at least proportional to demographics, > 1.00	0.03
Public comment age 18 to 30 at least proportional to demographics, > 1.00	0.05

# COMMUNITY SOLAR



- Generate approximately 26,000 kWh/year of renewable energy /year.
- Support local green jobs and the regional renewable energy sector.
- Reduce the long-term operating costs of affordable housing.
- Test community solar and lay the foundation for bringing community solar to scale.



EQUITY



ENERGY

# DISTRICT SHARED PARKING



- Ensure access to parking when its needed.
- Reduce rent to subsidize unused parking.
- Preserve older buildings.

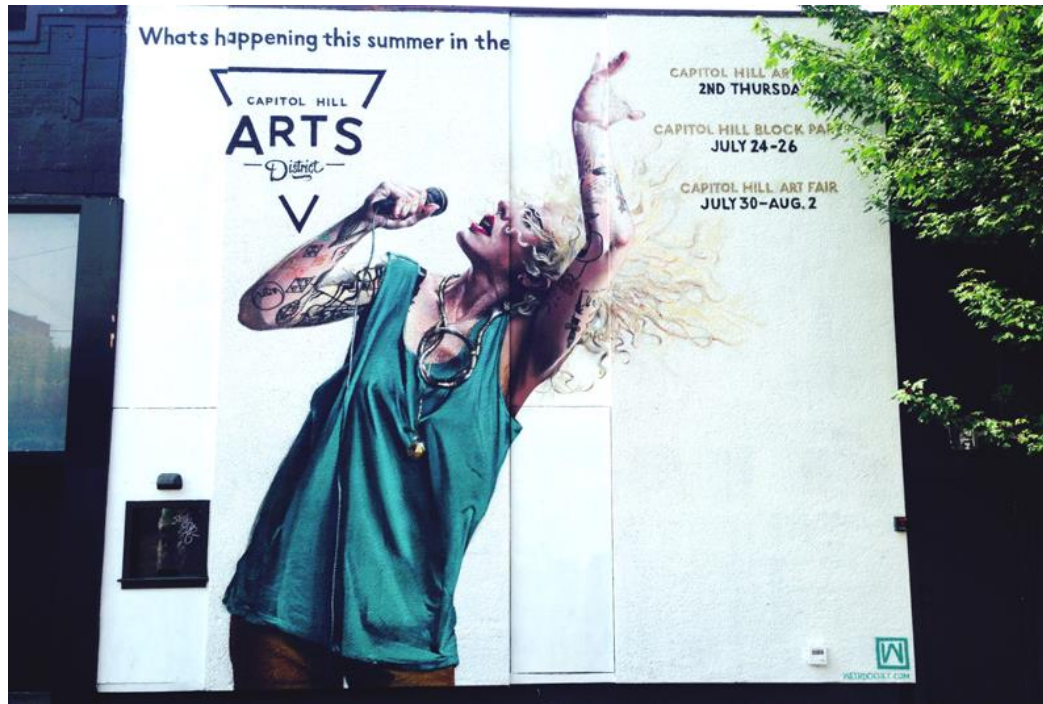


TRANSPORTATION



EQUITY

# CAPITOL HILL ARTS DISTRICT



- Preserve and create space for the arts
- Market the Arts District as a destination
- Explore collective resources to draw audiences, preserve arts uses and build staff capacity for the Arts District
- Explore and pilot a shared arts destination district benefits
- Actively support real estate development projects that use arts district incentives



CULTURE



EQUITY



# GREEN BUSINESS SOLUTIONS



- Prevent stormwater pollution
- Protect wastewater infrastructure
- Conserve water
- Increase waste prevention and recycling



# PEDESTRIAN STREETS



Create streets where:

- Everyone feels safe and welcome
- We celebrate the LGBTQ and artistic culture and history of the neighborhood
- The street is a platform for building community
- There are no gates, no fences, no drinking in the street Garage, delivery, and emergency vehicle access is maintained



TRANSPORTATION



CULTURE



HEALTH

# DUMPSTERS IN THE RIGHT OF WAY



- Improve health and safety.
- Improve the pedestrian environment
- Provide solution to a longstanding challenge of limited storage for waste containers in the business corridors



# ECODISTRICT AND THE CITY

## **Current Projects**

- EcoDistrict Index
- Community Solar
- District Shared Parking
- Capitol Hill Arts District
- Green Business Solutions
- Pedestrian Streets
- Dumpsters in the Right of Way

## **Next Up...**

- Expand the EcoDistrict Index
- Implement district shared parking phase 2
- Update CH Neighborhood Plan
- Analyze and engage community around HALA
- Capitol Hill HALA projects
  - Parking reform and pilots
  - Microhousing analysis

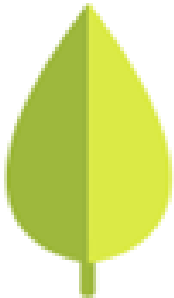
# ECODISTRICT INDEX UPDATE



**CULTURE**



**EQUITY**



**HABITAT**



**HEALTH**

# SHARED PARKING PHASE 2



## PROJECT PARTNERS:

- CH EcoDistrict
- Capitol Hill Housing
- King County Metro
- SDOT
- TransitCenter\*

\*funding pending

# NEIGHBORHOOD PLAN UPDATE



## Neighborhood Plan



Prepared for  
Capitol Hill  
Urban Center Village

Prepared by  
Capitol Hill Neighborhood  
Planning Committee  
MAKERS architecture  
and urban design

Sponsored by  
City of Seattle  
Neighborhood Planning  
Office

December 1998

Last Updated:  
December 1998

# RENTER ENGAGEMENT





# HOUSING AFFORDABILITY AND LIVABILITY AGENDA (HALA)

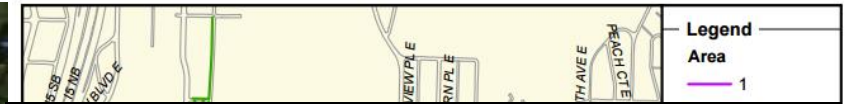
1. Study current affordability within the EcoDistrict.
2. Engage renters around potential upzoning and use changes.
3. Study the effectiveness of microhousing
4. Analyze and pilot on- and off-street parking strategies.



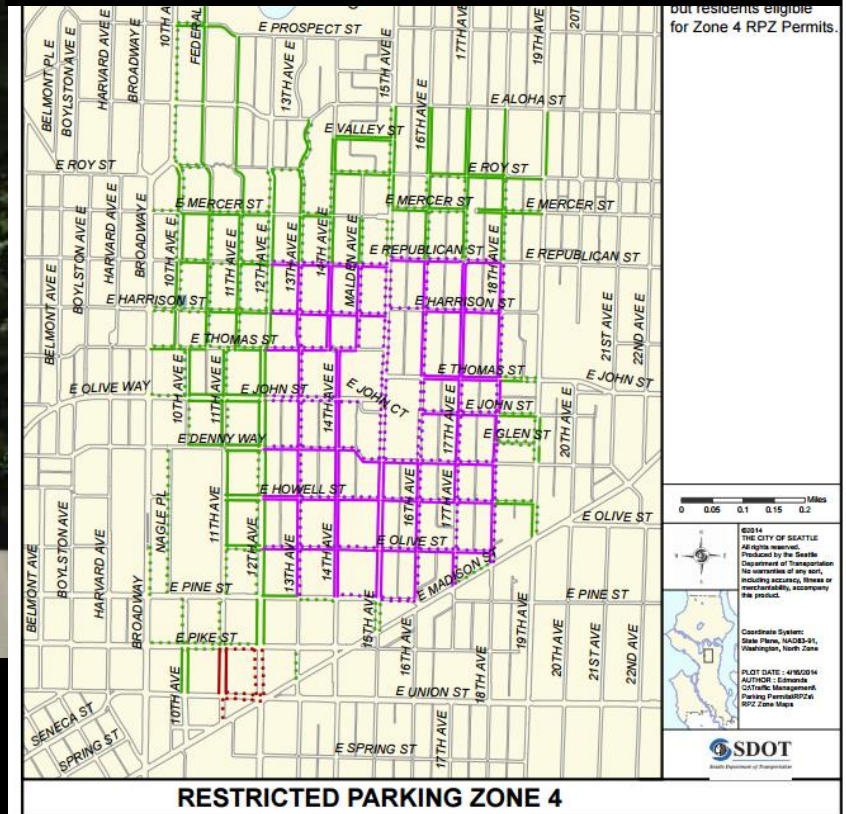
# PARKING REFORM AND PILOTS



HALA OP.1. Create a parking benefit district and “cap and trade” demonstration pilot

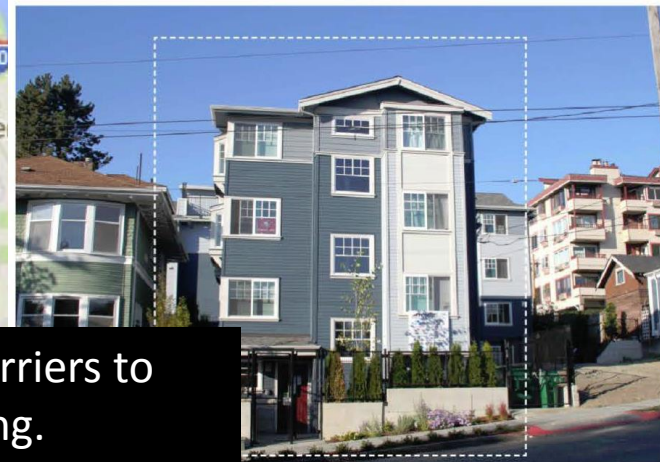
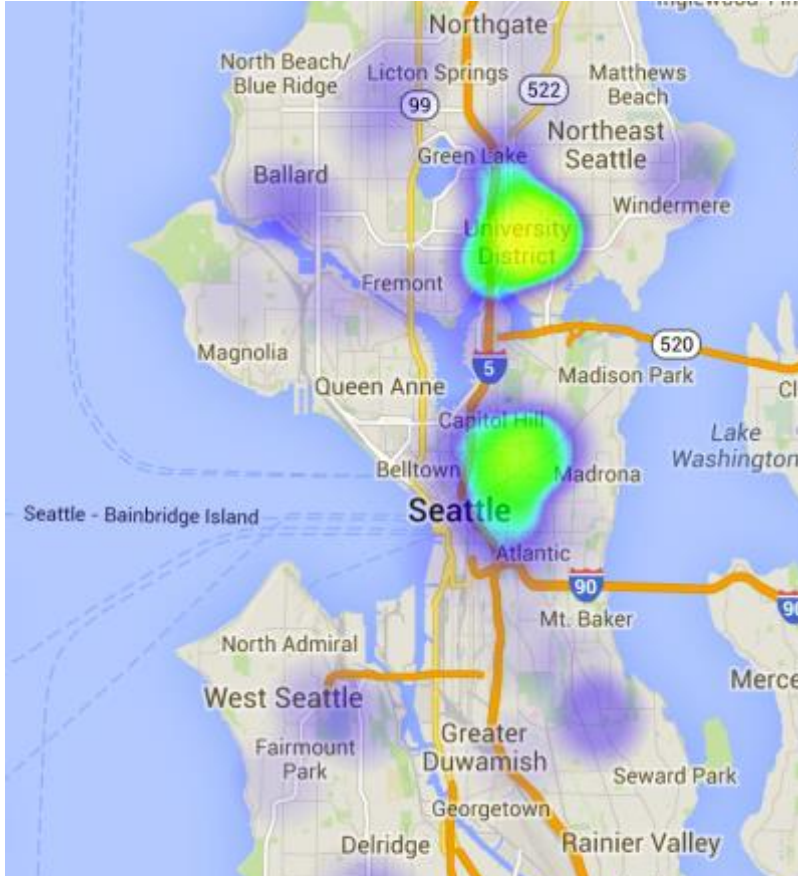


HALA OP.2. Explore revising the Restricted Parking Zone (RPZ) program.



RESTRICTED PARKING ZONE 4

# MICROHOUSING ANALYSIS



HALA MF8. Remove recently created barriers to the creation of congregate micro-housing.

Thank you.

