

A group of children wearing helmets are riding bicycles on a paved street lined with green trees. The scene is bright and sunny. A semi-transparent white banner is overlaid across the middle of the image, containing the title and subtitle.

Bicycle Master Plan

Implementation Plan 2017-2021

Sustainability and Transportation Committee

Darby Watson

April 4, 2017



Seattle
Department of
Transportation

Our mission, vision, and core values

Mission: deliver a high-quality transportation system for Seattle

Vision: connected people, places, and products

Committed to **5 core values** to create a city that is:

- Safe
- Interconnected
- Affordable
- Vibrant
- Innovative

For **all**

Presentation overview

- Why we're here
- 2016 progress
- What we heard
- Revised process
- One CC coordination
- Quick wins

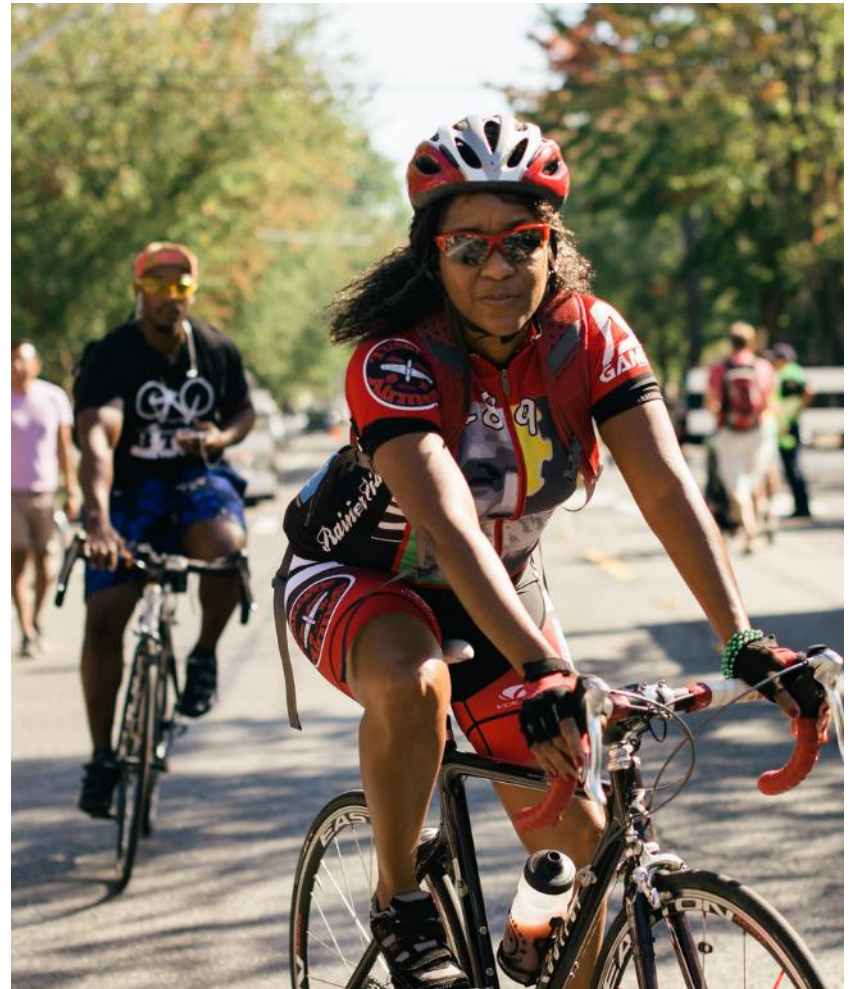
Why we're here

Bicycle Master Plan Vision:

- Riding a bicycle is a comfortable and integral part of daily life in Seattle for people of all ages and abilities.

Council Resolution 31515:

- Update implementation plan annually by March 31



2016 Progress Report (1 of 2)

2016 BMP Projects	Completion Status	Estimated Completion	Notes
2 nd Ave PBL (Yesler Way to S Washington St)	Complete		
N 34 th St PBL	Complete		
Roosevelt Way NE PBL	Complete		
University Bridge PBL	Complete		
Westlake Ave N PBL	Complete		
Delridge Way SW PBL	Complete		
Meridian Ave N BL	Complete		
Renton Ave S BL	Complete		
SW Admiral Way BL	Complete		Additional ped improvements expected in 2017
Wedgewood NGW	Complete		
Central E-W NGW	Complete		Interim is complete, final to be constructed in 2017
5 th Ave Sharrow	Complete		

2016 Progress Report (2 of 2)

2016 BMP Projects	Completion Status	Estimated Completion	Notes
Banner Way NE BL	Ready for construction	2017	Waiting for good weather/Sound Transit
Dexter Ave N PBL	Ready for construction	2017	Waiting for good weather
N 92d St PBL	Ready for construction	2017	Waiting for good weather
Gilman Ave W PBL	Ready for construction	2017	Added to contract with Nickerson St paving
S Dearborn St PBL	Design complete	2017	Coordinating with WSDOT, paving
9 th Ave N PBL	Design complete	2017, 2018	Private construction and utility issues 2017 – Westlake Ave N to Harrison St 2018 – Harrison St to Denny Way
SODO Trail	30% design	2018-2019	Coordination with Metro/WSDOT

2016 Progress Report

2016 Levy deliverable	2016 Goal	2016 Actual	Notes
Bike parking spaces	500	622	
Miles of greenways	6.67	1.82	Rainier greenway moved to 2017 (6 miles)
Protected Bike Lanes	5.56	3.63	Gilman and others moved to 2017

- Levy ramp up
- Additional outreach needs
- Contracting and coordination opportunities

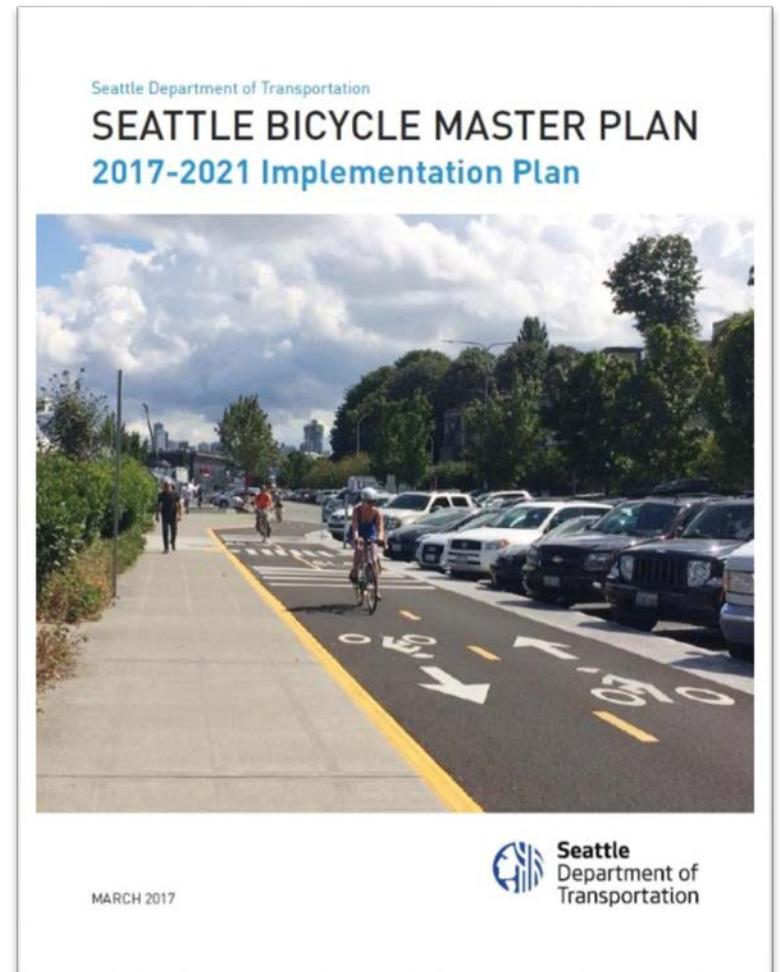
What we heard



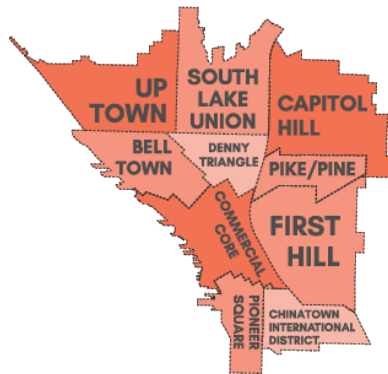
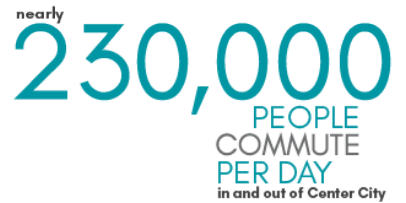
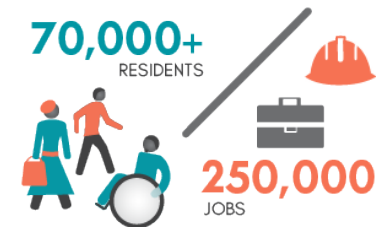
- Provide transparency in the process
- Improve connectivity
- Coordinate with One Center City
- Increase quick wins

Revised process

- Engaged SBAB in all decisions for final list of projects
 - Reviewed Tier 1 projects
 - Selected projects based on connectivity
 - Added projects where partnering opportunities presented cost savings
 - Agreed on final list of projects



ONE Center City Coordination



- Near-term strategies released in Jan 2017
- Path-forward March 2017
- Operational changes 2017
- Design/construction 2018-2019

Quick wins

- Project coordination
- Crew delivered
- Improving predictability



12th at Alder

Quick wins



Cherry at 25th St

Roosevelt and 43rd

Quick wins



16th and Jackson

Burke-Gilman trail at 40th Ave NE

Questions?

Darby.watson@seattle.gov | (206) 684-7609
www.seattle.gov/transportation/bike.htm

www.seattle.gov/transportation



Seattle
Department of
Transportation