

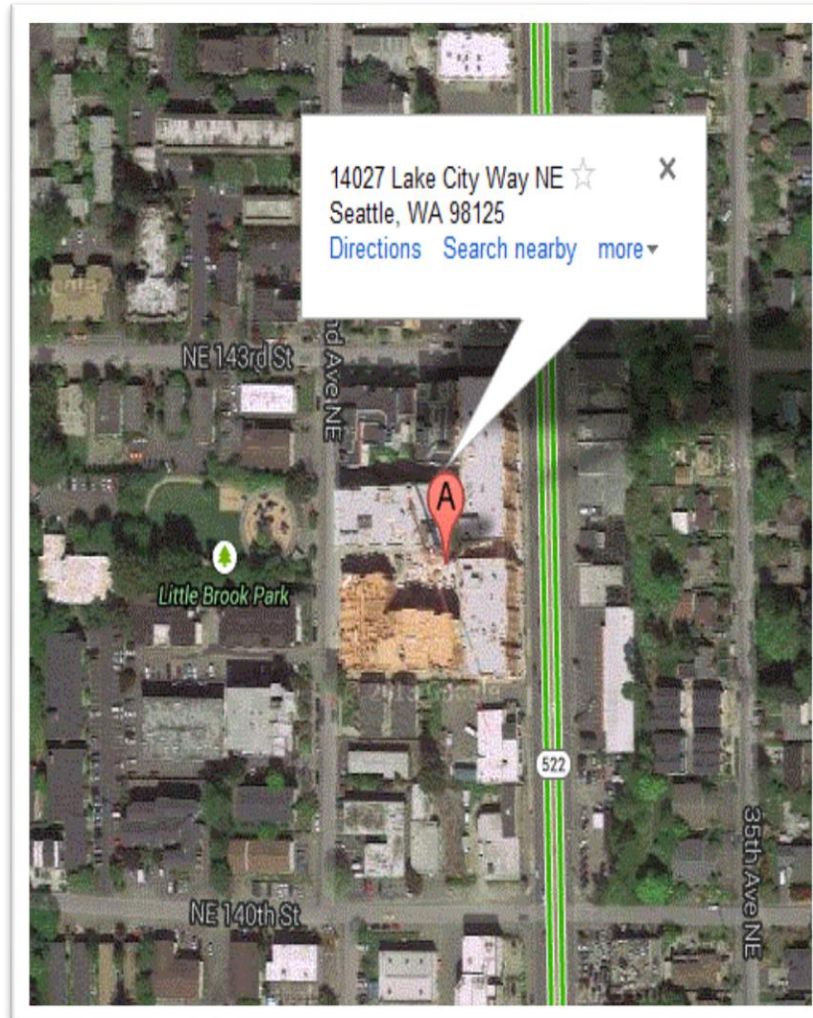
Seattle Public Utilities and Neighborhood Committee

**Relinquish and Accept Easement for Sewer
Purposes at 14027 Lake City Way NE**



Vicinity Map

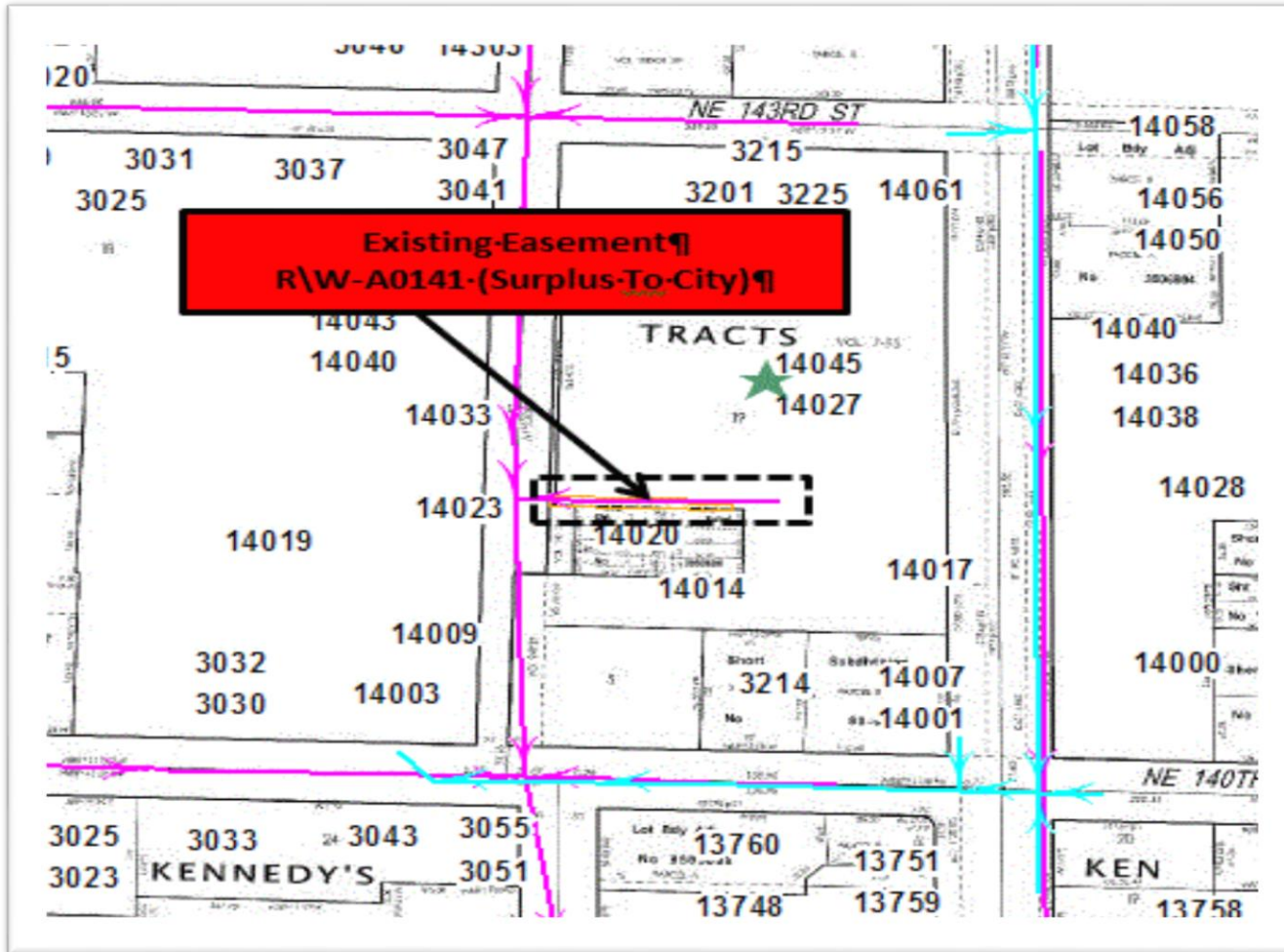
Lake City Area NE Seattle



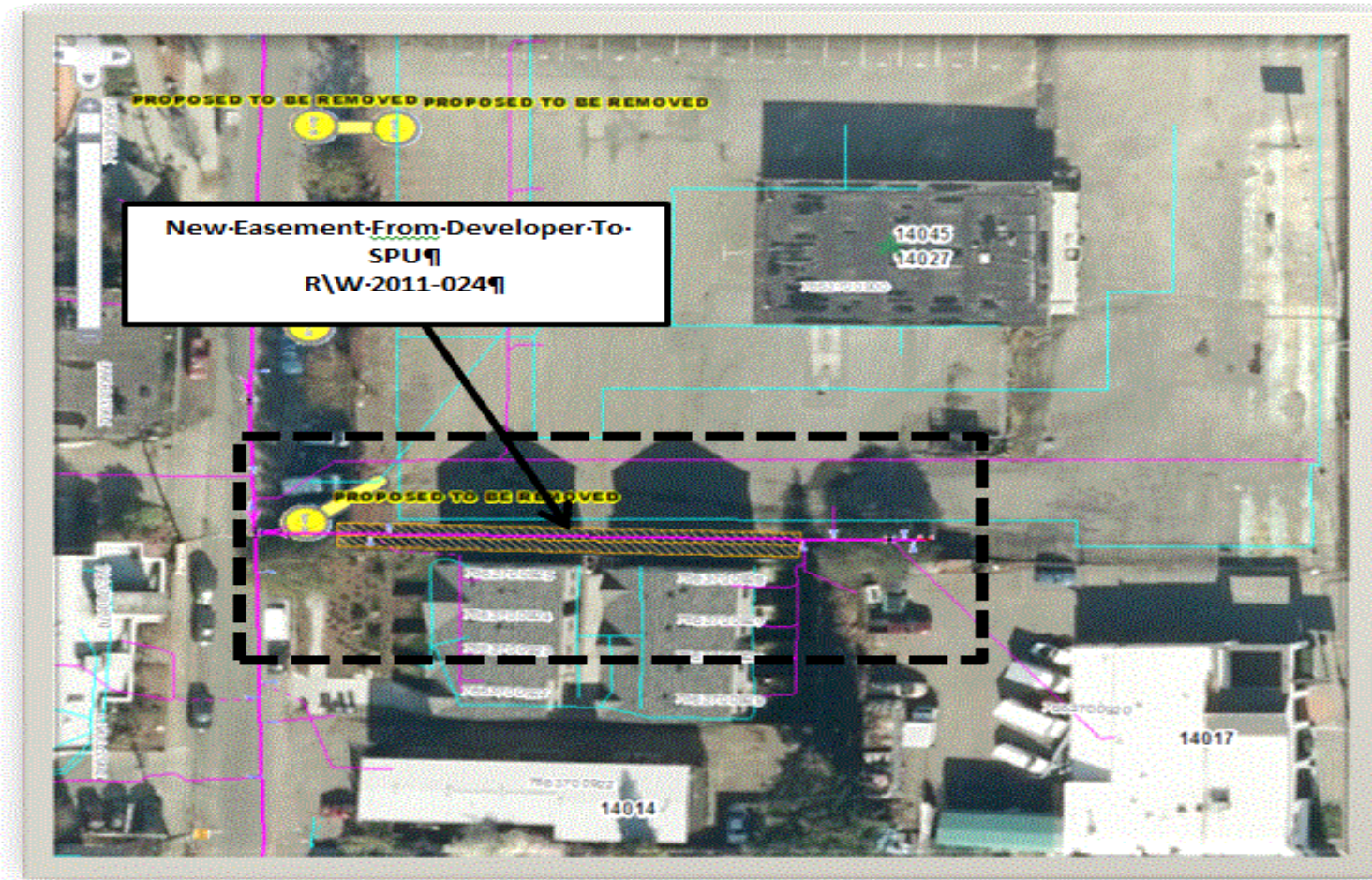
Summary of Legislation

- **City to relinquish inadequate sewer easement rights to Lake City Investors, LLC**
- **City to accept sewer easement rights from Lake City Investors, LLC**

Relinquish 5' wide surplus sewer easement



Accept a new 10' wide sewer easement



Questions?