

Seattle Design Commission 2020 Annual Report

Land Use and Neighborhood Committee
April 28th, 2021



Presentation outline

Overview

2020 year in review

2020 highlights

What is coming in 2021

Overview of the Commission

- **Established in 1968**
- **Advise the Mayor and City Council on projects affecting the public realm, including:**
 - **Capital Improvement Program projects (CIP)**
 - **Right-of-Way projects (ROW)**
 - Street and alley vacations
 - Skybridges
 - Long-term street use permits
 - **Major transportation projects (M)**
 - **Plan or policy reviews (P)**
 - **Oversight of ST3 Light Rail Investments**

Overview of the Commission

Appointed by Mayor, confirmed by Council

4 required appointments:

- 2 Licensed Architects
- 1 Fine Artist
- 1 lay member

5 additional appointments from the following professions:

- Urban Planner
- Urban or Environmental Designer
- Licensed Engineer
- Landscape Architect

1 member from YMCA Get Engaged Program



*Awaiting Council to appoint the Urban Planner position, At-Large position, and Chair

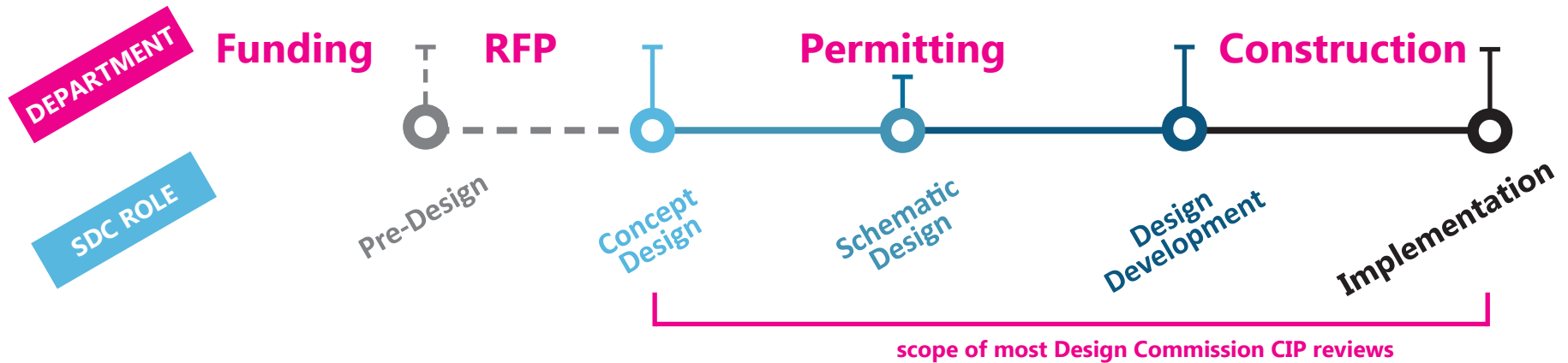
Overview of the Commission

Mission

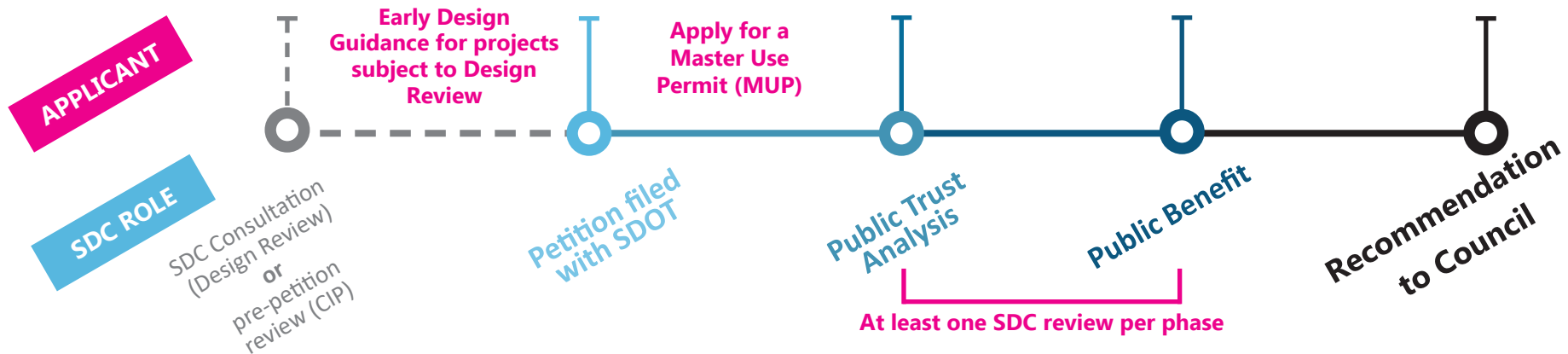
- **Inspired Design** - Inspired design unifies the public realm and inspires the community by embodying state-of-the-art practices.
- **Contextual Integration** - Integrated design responds to its context and enhances its neighborhood.
- **Innovative Sustainability** - Sustainable design minimizes environmental impact and provides long-term self-sufficiency.
- **Social Inclusion** - Inclusive design seeks to elevate the quality of life for all and responds fluently to its cultural context.
- **Exemplary Partnerships** - Design partnerships leverage public, community, and private resources, integrating design efforts across multiple disciplines and agencies to achieve greater results with the same resources.
- **Effective Investments** - Effective design provides high value for the investment by thoughtfully considering flexibility, longevity, and total life-cycle costs.

Overview of the Commission

Capital Improvement Program



Street & Alley Vacations and Skybridge



2020 Year in Review

Downtown / SODO

9 projects | \$535 million*

Ballard

1 project | \$15 million

Capitol Hill

1 project | \$80,000

Greenlake

1 project | \$6.5 million

Southeast Seattle

2 projects | \$87.5 million

South Park / Georgetown

1 projects | \$2.09 million

South Lake Union

2 projects | \$5 million*

North Seattle

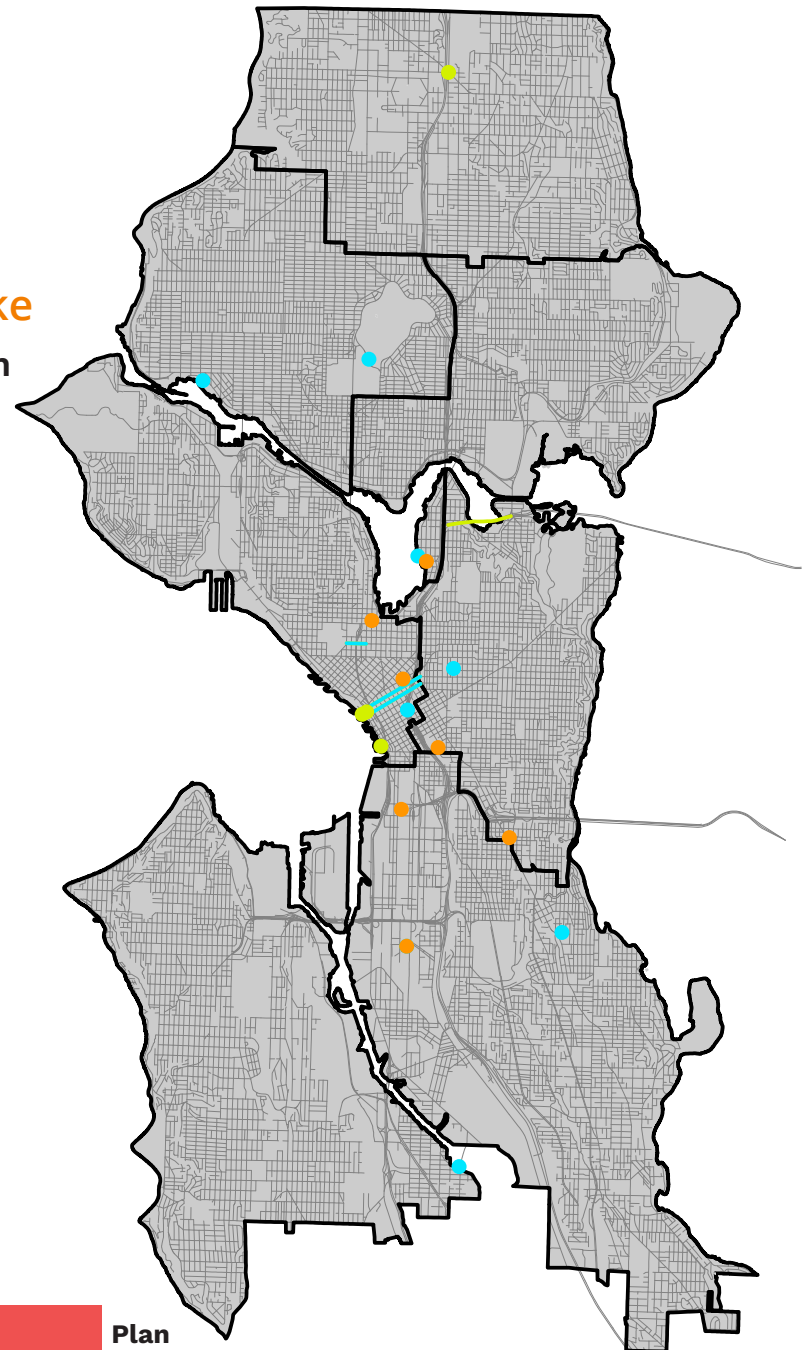
1 project | \$144 million

Montlake / Eastlake

3 projects | \$822 million

Citywide

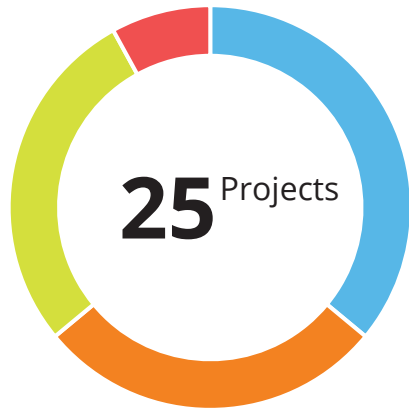
4 projects



*Does not include projects reviewed to meet condition of approval



2020 Year in Review



- CIP (36%)
- ROW (28%)
- Major Project (28%)
- Plans (8%)

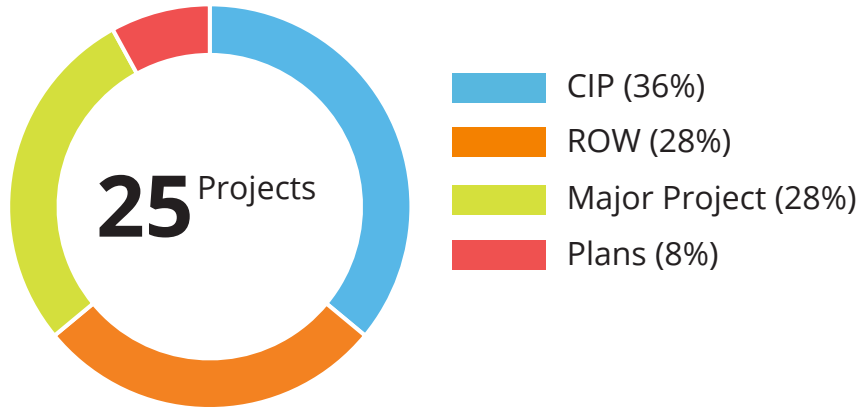


- CIP (33%)
- ROW (24%)
- Major Project (35%)
- Plans (8%)

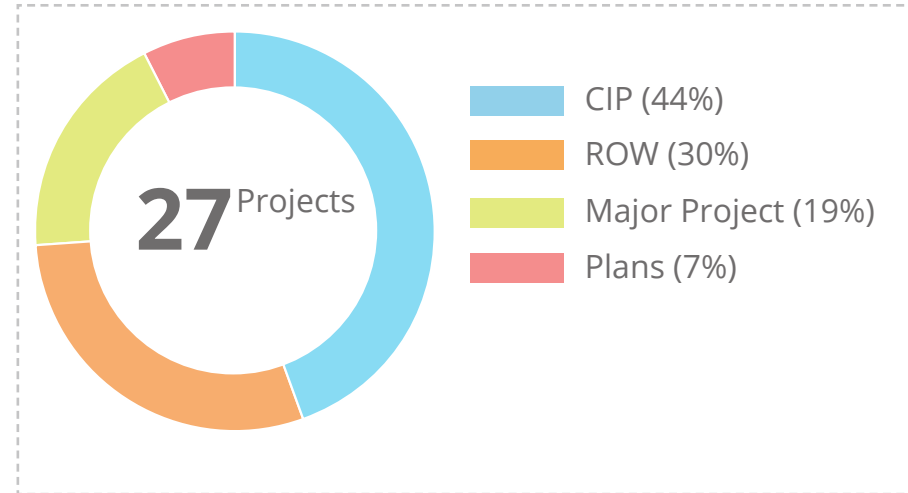


- CIP (28%)
- ROW (20%)
- Major Project (46%)
- Plans (6%)

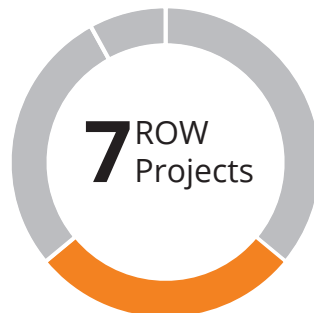
2020 Year in Review



2019 Project Statistics



- Ballard Pump Station
- Cal Anderson Park
- Freeway Park Improvements
- Greenlake Community Boathouse*
- North Rainier Park Development
- South Park Plaza
- Terry Pettus Park
- Thomas St Redefined
- Pike Pine Renaissance



- E Howe Steps*
- Mariner's Perimeter Safety Project*
- Mercer Blocks (816 Mercer)*
- Mt. Baker Housing Street Vacation
- SCL - Diagonal Street Vacation
- WSSC Expansion
- Yesler Terrace Pocket Park III



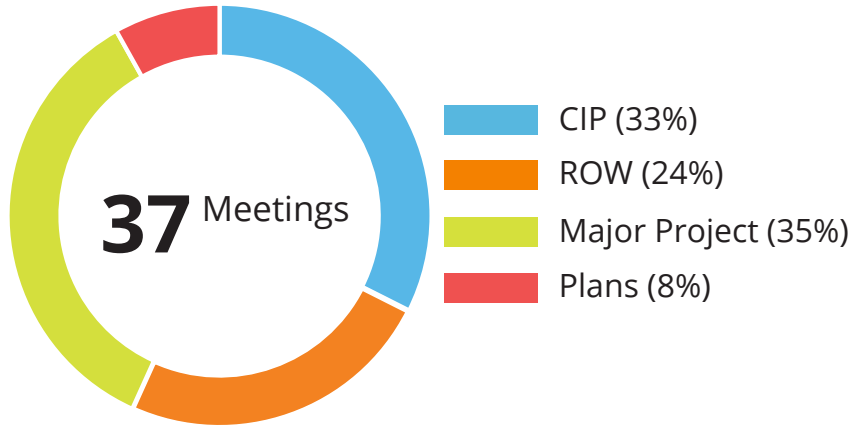
- NE 130th St Light Rail Station
- Colman Dock*
- WSBLE Briefings
- WSBLE Workshops (Internal)*
- SR 520 - Portage Bay Bridge and Roanoke Lid*
- Waterfront - Seattle Aquarium
- Waterfront - Overlook Walk



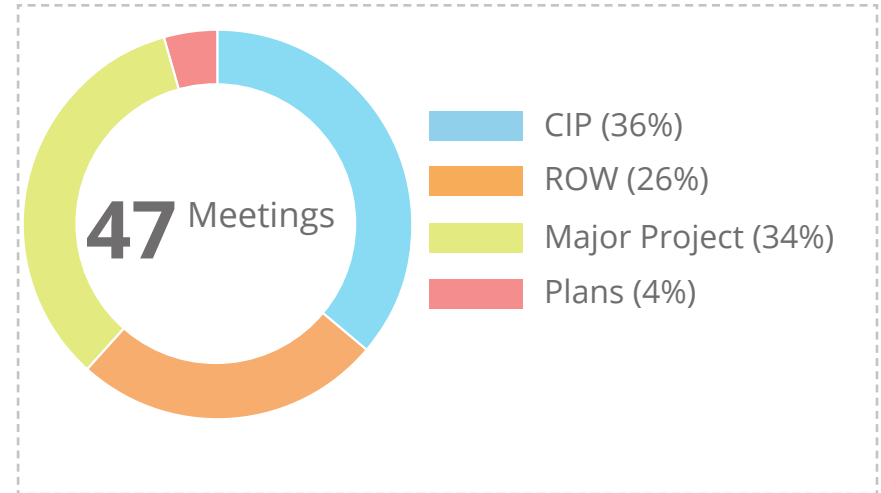
- Skybridge Director's Rule Update
- WSBLE CoS Design Guidelines

* Only reviewed at a subcommittee

2020 Year in Review



2019 Meeting Statistics



- 3 Ballard Pump Station*
- 1 Cal Anderson Park
- 1 Freeway Park Improvements
- 1 Greenlake Community Boathouse*
- 1 North Rainier Park Development
- 1 South Park Plaza
- 2 Terry Pettus Park
- 1 Thomas St Redefined
- 1 Pike Pine Renaissance



- 1 E Howe Steps*
- 1 Mariner's Perimeter Safety Project*
- 1 Mercer Blocks (816 Mercer)*
- 1 Mt. Baker Housing Street Vacation
- 3 SCL - Diagonal Street Vacation*
- 1 WSCC Expansion
- 1 Yesler Terrace Pocket Park III



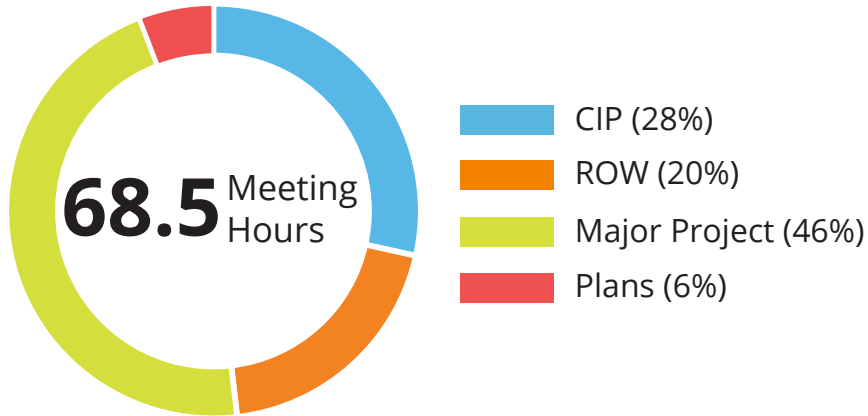
- 1 NE 130th St Light Rail Station
- 1 Colman Dock*
- 1 WSBLE Briefings
- 4 WSBLE Workshops (Internal)*
- 2 SR 520 - Portage Bay Bridge and Roanoke Lid*
- 2 Waterfront - Seattle Aquarium
- 2 Waterfront - Overlook Walk



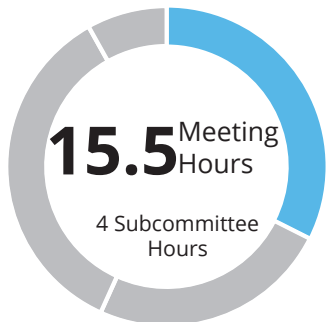
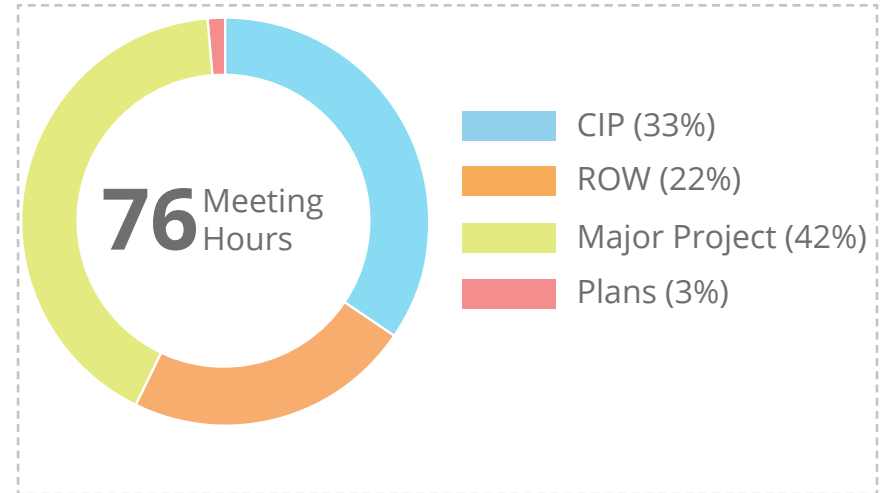
- 1 Skybridge Director's Rule Update
- 2 WSBLE CoS Design Guidelines*

* subcommittee review
multiple reviews

2020 Year in Review



2019 Meeting Statistics



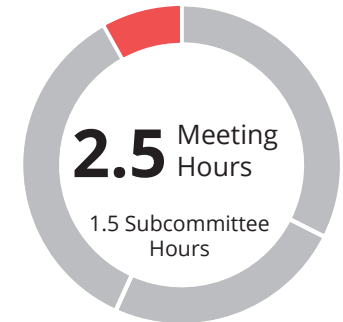
- 6 Ballard Pump Station*
- 2 Cal Anderson Park
- 1.5 Freeway Park Improvements
- 1 Greenlake Community Boathouse*
- 1.5 North Rainier Park Development
- 1.5 South Park Plaza
- 3 Terry Pettus Park
- 1 Thomas St Redefined
- 2 Pike Pine Renaissance



- 1 E Howe Steps*
- 1 Mariner's Perimeter Safety Project*
- 1 Mercer Blocks (816 Mercer)*
- 2 Mt. Baker Housing Street Vacation
- 5 SCL - Diagonal Street Vacation*
- 2 WSCC Expansion
- 1.5 Yesler Terrace Pocket Park III



- 2.5 NE 130th St Light Rail Station
- 1.5 Colman Dock*
- 1 WSBLE Briefings
- 14.5 WSBLE Workshops (Internal)*
- 3.5 SR 520 - Portage Bay Bridge and Roanoke Lid*
- 3.75 Waterfront - Seattle Aquarium
- 4.75 Waterfront - Overlook Walk



- 1 Skybridge Director's Rule Update
- 3 WSBLE CoS Design Guidelines*

* subcommittee review
multiple reviews

2020 Year in Review

\$1.6 Billion

In total project reviews

\$72.3 Million

CIP Projects

\$91 Million

ROW Projects

\$1.45 Billion

Major Projects

\$-

Plans

797 Combined
Commissioner Hours

708 billable

- SDC meetings
- Subcommittee meetings
- Consultant selection panel
- Public Art Advisory Committee
- Administrative reviews
- Writing - Memos & letters

89 non-billable

- Review of meeting minutes
- Adhoc committees
- Research
- Prep meetings
- Staff meetings
- Interviews
- Project tours
- Annual retreat
- SDC special project
- Council meetings

2020 Highlights

SR 520 - Roanoke Lid & Portage Bay Bridge

Review of urban design principles



2020 Highlights

SR 520 - Roanoke Lid & Portage Bay Bridge

Review of urban design principles



2020 Highlights

Ballard Pump Station

Updated Site Plan



View from 24th Ave NW & NW 54th St



View from 24th Ave NW Street End



2020 Highlights

Ballard Pump Station - 24th Ave NW Streetend

Updates:

- Revised vehicular access in coordination with adjacent property owner to existing gate
- Added additional planting and seating
- Refined design elements



Removable bollards

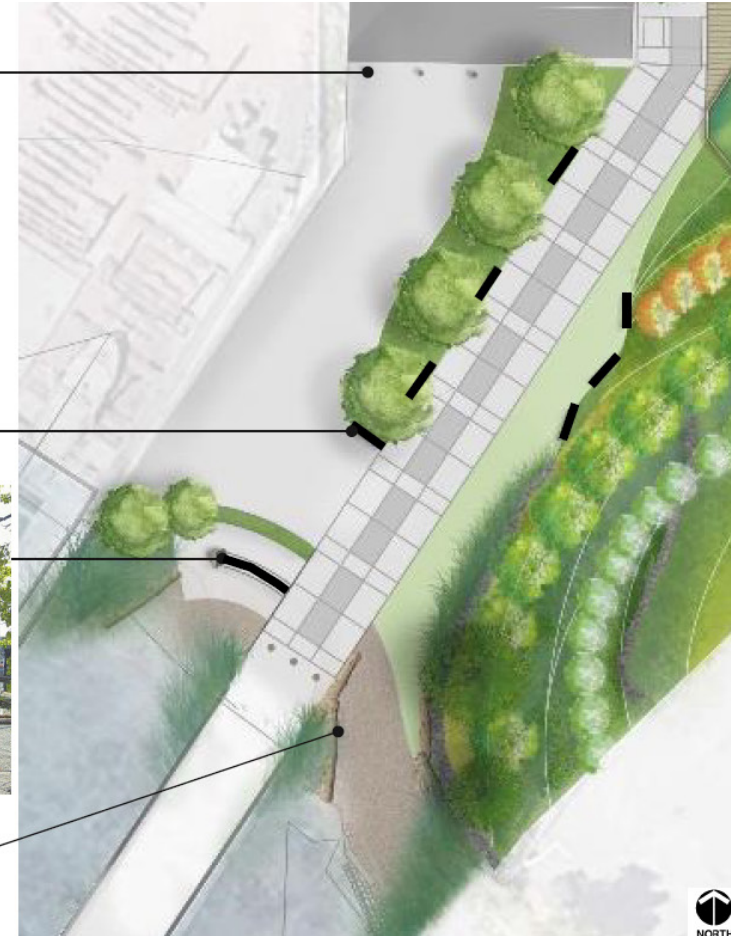


Benches



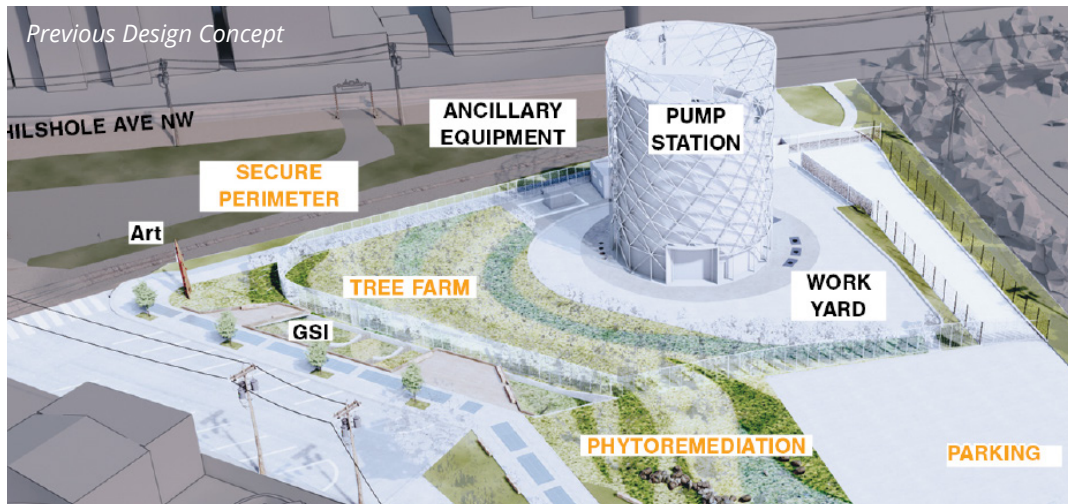
View looking to water & pier

Boulders & logs



2020 Highlights

Ballard Pump Station - Art & Fencing



2020 Highlights

Seattle City Light -Diagonal Street Vacation

Project Location

PROJECT ADDRESS

3613 4th Ave South, Seattle, WA 98134

VACATION ADDRESS

4101 Diagonal Ave South, Seattle, WA 98134

APPLICANT

Seattle City Light

TYPE

Capital Improvement Project and Street Vacation

NEIGHBORHOOD PLANNING AREA

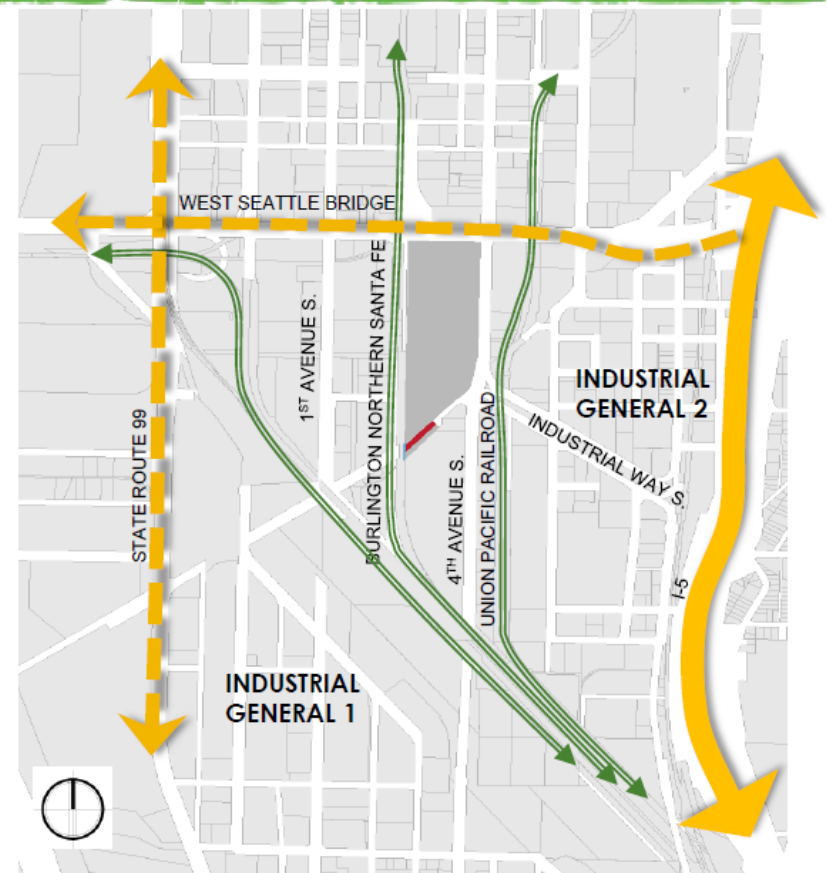
SODO

ZONING

Industrial General (1)

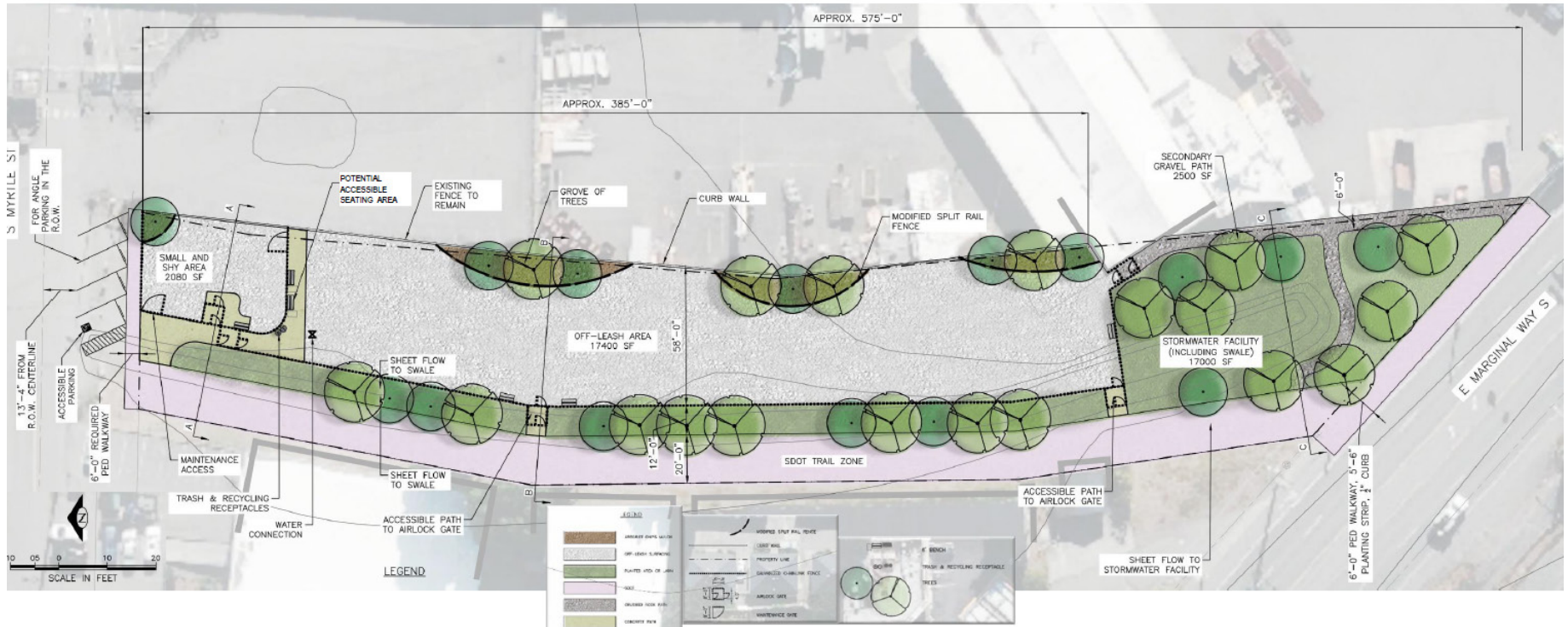
IN EQUITY AREA

Yes



2020 Highlights

Seattle City Light -Diagonal Street Vacation



Design Concept - Flume Property

2020 Highlights

Seattle City Light -Diagonal Street Vacation

Georgetown to South Park Trail and the Flume Property

- New shared use path connecting the Georgetown and South Park communities.
- Communities share Library and community center



Georgetown Connection

Ellis, Albro, 13th: A walking/biking path on Ellis Ave S, S Albro Pl, and 13th Ave S



Existing: Ellis Ave S



Existing: S Albro St



Existing: 13th Ave S

E Marginal Way S Connection

North side: A walking/biking path or protected bike lane on the north side of E Marginal Way



Existing: E Marginal Way S

South Park Connection

16th Ave S: One-way protected bike lanes on both sides of 16th Ave S leading to the South Park bridge



Existing: 16th Ave S (north of South Park Bridge)

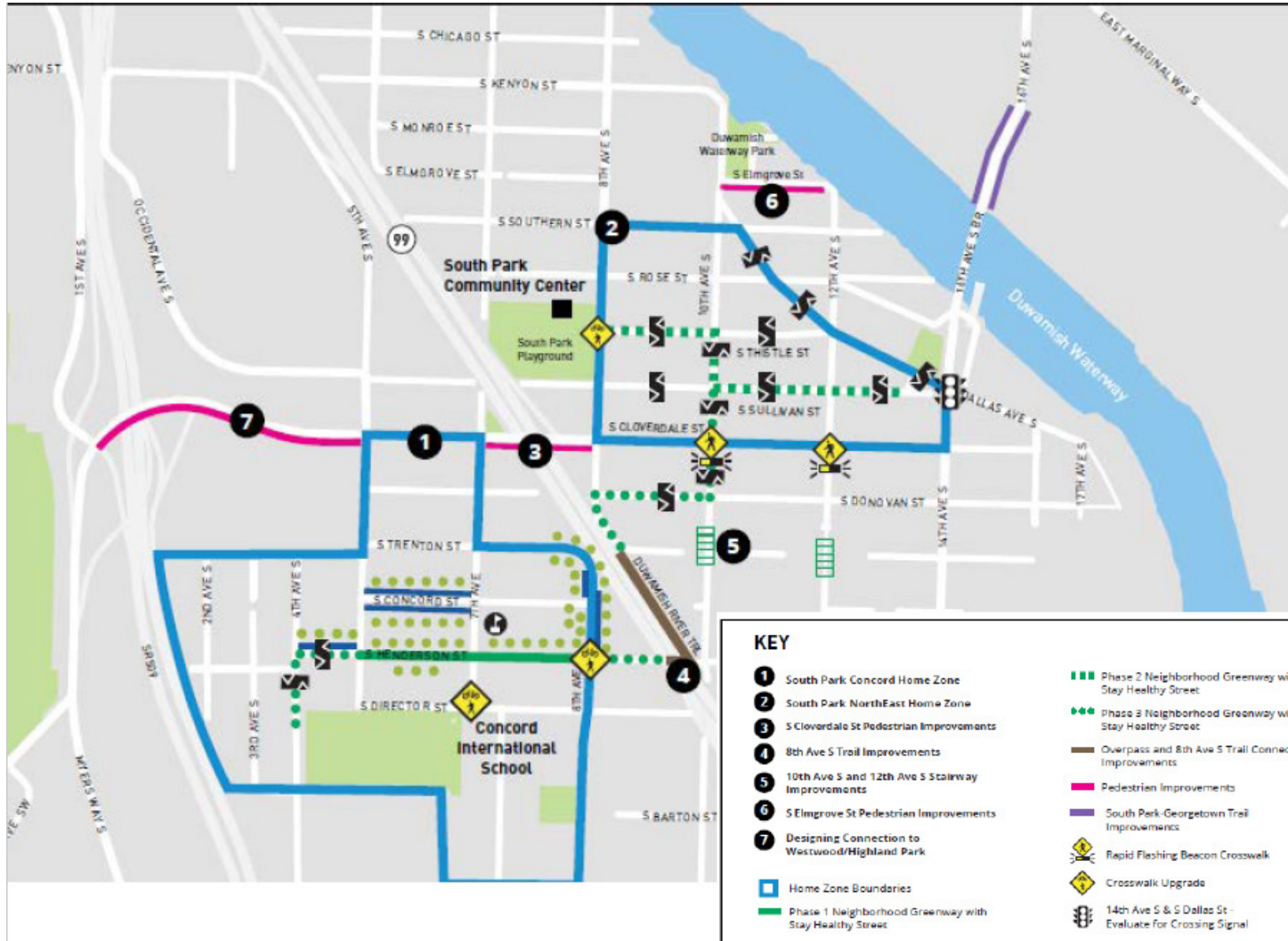
2020 Highlights

South Park Plaza



2020 Highlights

South Park Plaza - Pedestrian Safety



2020 Highlights

Transition to online meeting format

Sound Transit 3 & WSBLE

- NE 130th Light Rail Station Design Review - Ongoing
- SDC Briefing on City of Seattle Design Guidelines for light rail stations - Ongoing
- Letter on ST Remnant Parcels - December 2020
- WSBLE Station Workshops (online) - October 2020
- SDC Briefing on OPCD Station Area Planning - August 2020
- SDC Briefing on ST Architecture Standards - January 2020
- Letter on C/ID Station Area Planning - December 2019

SR 520

- Roanoke Lid & Portage Bay Bridge endorsement letter - April 2020

Waterfront Seattle

- Overlook Walk - **completed November 2020**
- Aquarium -Ocean Pavilion - **completed August 2020**

Policies

- Letter on policies for renaming public facilities - July 2020

What's ahead in 2021

SR 520- Roanoke Lid & Portage Bay Bridge RFP Review

Sound Transit 3 & WSBLE

- NE 130th Light Rail Station Review
- Review of select stations and guideway segments following DEIS publication
- Coordination on CoS Design Guidelines for Light Rail Stations
- Briefing on Station Area Planning

City Capital Projects

- Georgetown to South Park Trail Connection
- South Park Plaza
- Yesler Terrace Pocket Park III - Final review for Yesler Terrace Vacation
- Garfield Super Block
- Fire Station 31
- Waterfront Park (Pier 58)

Policies:

- Finalize Skybridge Joint Director's Rule Update

Questions?