 (323) 466-4372 (tel:(323) 466-4372)

Apartment Search



SEARCH

Welcome to Triangle Square Senior Apartments

An LGBT-Friendly Community for People 62 and Older

Close, convenient and comfortable, Triangle Square Apartments is the nation's first affordable lesbian, gay, bisexual and transgender (LGBT) housing development of private, individual apartment homes. On-site services provided by the Los Angeles LGBT Center (<http://www.lagbtcenter.org>) address the health, social and recreational needs of LGBT seniors and make Triangle Square Apartments one of the most popular and exciting senior LGBT-friendly housing communities for all elders 62 and over.

Our controlled access, energy efficient one- and two-bedroom homes offer European style cabinets and "Energy Star" appliances including: refrigerator, range and hood and garbage disposal. Apartments also feature wall-to-wall carpeting, mini blinds and pre-wired telephone cable. Laundry facilities are located on every floor of the building. The apartments are centered around an open air courtyard where you can gather with friends around a sparkling pool, or you can meet new friends in the Robert W. Schutrum Community Room, which is open to all residents. The community room is also the site of over 70 monthly social, educational and enrichment programs and services, including a reduced cost lunch program for residents and their guests Monday through Friday.

Triangle Square Apartments are located in the historic core of Hollywood at the corner of Selma and Ivar. Some of the nation's most popular attractions, restaurants and retail shops are just steps away. The apartments offer convenient access to public transportation, making it easy to get to West Hollywood, Downtown L.A. and the historic Silver Lake neighborhood. Triangle Square, It's Not Just An Apartment...It's Your Home.

 Location

Triangle Square Senior Apartments

1602 N. Ivar Ave.

Los Angeles, CA 90028-6305 (<http://maps.google.com?q=1602+N.+Ivar+Ave.++Los+Angeles+CA+90028-6305>)

(323) 466-4372 (tel:(323) 466-4372)

 Office Hours

Mon - Fri: 8 AM - 5 PM

Saturday and Sunday: Closed

TRANSLATE THIS PAGE

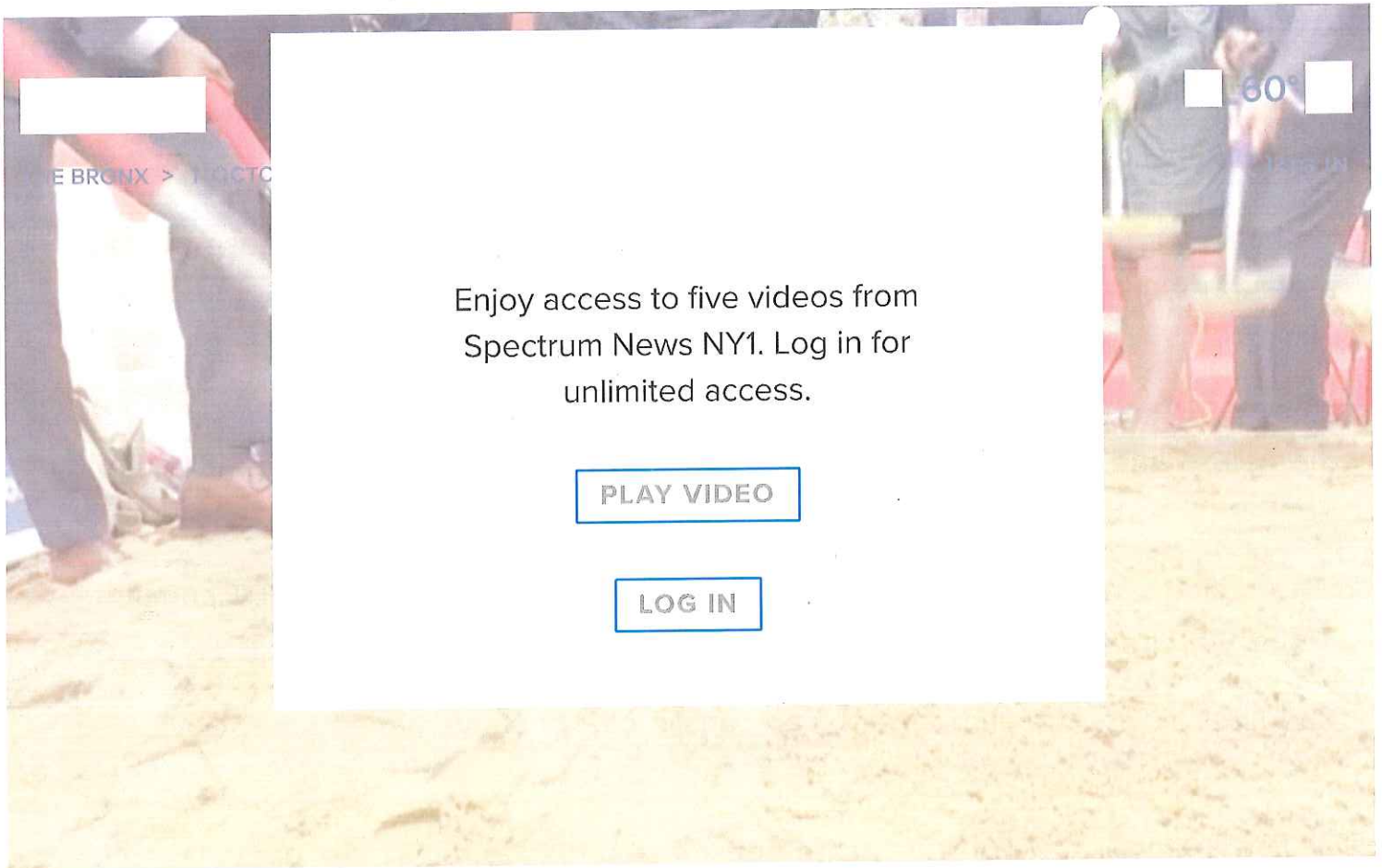
[PRIVACY POLICY \(PRIVACYPOLICY.ASPX?_YTRACKUSER=NDEYNJQ1OTQ5IZYZMZK1NZIZMG%3D%3D-](#)

[W5UOONOKJYW%3D&_YTRACKVISIT=NZU2MDEYMJM1IZEYMDC0OTCXMDC%3D-OOL2622UGNA%3D&_YTRACKREQDT=16582220183110\)](#)

[TERMS AND CONDITIONS \(TERMSANDCONDITIONS.ASPX?_YTRACKUSER=NDEYNJQ1OTQ5IZYZMZK1NZIZMG%3D%3D-](#)

[W5UOONOKJYW%3D&_YTRACKVISIT=NZU2MDEYMJM1IZEYMDC0OTCXMDC%3D-OOL2622UGNA%3D&_YTRACKREQDT=16582220183110\)](#)

© 2018 McCormack Baron Management, Inc. All Rights Reserved. | Website Design by RENTCafé (© 2018 Yardi Systems, Inc. All Rights Reserved.)



FIRST BRONX HOUSING DEVELOPMENT FOR LGBT SENIORS

BY AMY YENSI | THE BRONX
PUBLISHED 12:04 PM ET MAY. 18, 2018

It's never easy growing old but LGBT seniors are more likely to need assistance because they usually do not have children and some are estranged from their families. With that in mind; the first housing development in the Bronx for gay, lesbian, bisexual and transgender seniors is being built. Amy Yensi has the story.

A groundbreaking for a groundbreaking project: subsidized housing being built in the Bronx for low-income LGBT seniors.

"Everyone deserves to grow old with dignity and respect," said Marie Spivey, a local senior.

Yorkers, more than 100,000 are lesbian, gay, bisexual or transgender.

The building will welcome seniors who sometimes feel ostracized, alone and discriminated against because of their sexuality.

60°

LOG IN

"It helps with housing for seniors, for those who are homeless and those who are aging in the LGBTQ community who quite often find themselves without housing and without a support system," said Bronx Borough President Ruben Diaz Jr.

Help USA, a nonprofit organization that provides supportive housing for the homeless and those at risk of homelessness, will operate the building. It will feature a rooftop terrace and a community center that will be open to the public.

The building will have programs and services for members of the LGBT community, but other seniors who meet income guidelines will not be excluded.

"It just provides them hope that they can be part of a safe haven here," said Jose Collazo, the site manager for SAGE Bronx.

This will be the second subsidized housing complex for LGBT seniors in the city, after the construction of the Ingersoll Senior Residences in Fort Greene, Brooklyn.

Applications for the apartments in the Bronx building will be accepted beginning early next year.

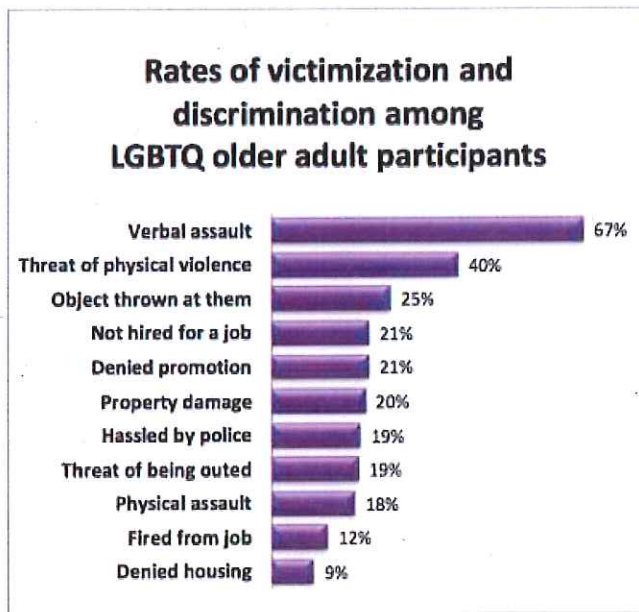
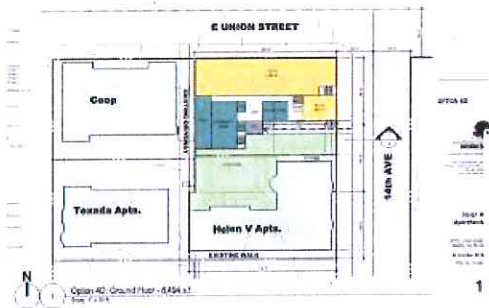
"We just want something for ourselves, a little flower in the garden. That's what we want," said Spivey.

Now that construction is under way, seniors will be able to move in by the fall of 2019.

YOU MAY ALSO BE INTERESTED IN

Capitol Hill Housing project at 14th and Union will create affordable LGBTQ-focused senior housing

Posted on [Tuesday, December 12, 2017 - 7:03 am](#) by [Kelsey Hamlin](#)



True affordability means keeping rents in the city down for everybody. An effort to help **Capitol Hill Housing** shape “Seattle’s first LGBTQ-affirming affordable senior housing development” at 14th and Union will take another step forward next week with a [Community Visioning Workshop](#):

LGBTQ-Affirming Affordable Senior Housing: Community Visioning Workshop



When:

Tuesday, December 19, 2017 – 5:30 pm @ 5:30 PM – 7:30 PM

Where:

The Summit, 420 East Pike Street

Share your ideas for Seattle's first LGBTQ-affirming affordable senior housing development to be built at the corner of Union St. and 14th Ave. Join Capitol Hill

Housing, Environmental Works, and other community partners for an evening to identify common goals ... Continue reading



CHS Capitol Hill Seattle



"We've heard consistently from the community about the need for a place where LGBTQ elders in the community could age," said **Ashwin Warrior**, Capitol Hill Housing spokesperson. "LGBTQ seniors were also named a priority population for the 2016 Housing Levy which adds extra impetus to the efforts."

Capitol Hill Housing plans to use the land currently home to a parking lot and upgrade its **Helen V Apartments** along E Union to create affordable housing for 55-and-up who identify as LGBTQIA+.

"Really the best way to find out what ought to be different is to ask folks what they need," Warrior said. Warrior said the community design meeting will offer an opportunity for neighbors and potential future residents "to weigh in on what elements they think are important in a building like this."

Previously, CHH interviewed residents from its other buildings and talked with people from **Bailey-Boushay House**, the E Madison facility that provides care for people with HIV, AIDS and other terminal diseases. It also held [a community meeting in September](#) to launch the project.

"We're looking for deeper partnerships and greater engagement with the community around this project," Warrior said. "The energy and enthusiasm for it has been phenomenal. We think there's a unique opportunity to really catalyze the conversation around LGBTQ elders and health, as well as the health of the whole neighborhood. It definitely aligns with our goals as a community developer."

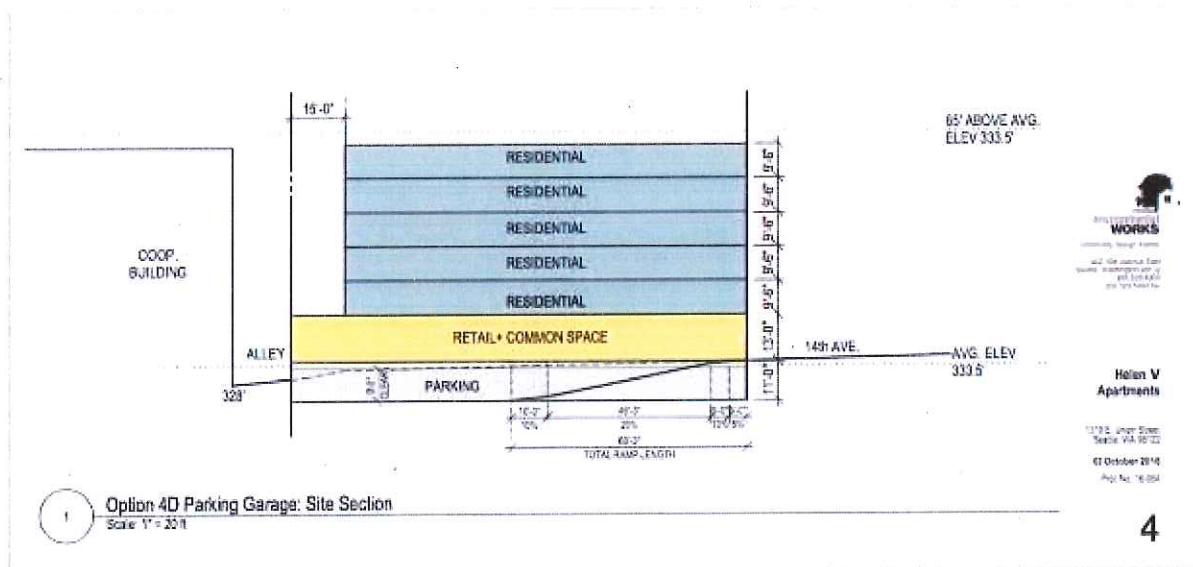
But this, and other in-the-works Capitol Hill Housing projects face a challenge. Tax cuts will mean a new landscape for nonprofit developers and some bedrock like the **Low-Income Housing Tax Credit** program which was planned to play a large role in the development will be eroded.

The project is worth a search for new funding solutions. Gay and trans people face extraordinary challenges as they age. One [UW study](#) shows disproportionate health impacts particularly on older LGBTQIA+

populations. The health disparity is more striking with the community as they age because the LGBTQIA+ community is measurably social and supportive. But as they age and become more physically limited or some pass away, once active LGBTQIA+ people can become isolated. In addition, the level of support varies regionally as each area has different stigmas and political affiliations, according to **Dr. Karen Fredriksen-Goldsen**, the study's principal investigator.

Meanwhile, King County's elderly LGBTQIA+ population is expected to double by 2030.

With the population boom coming, there is also another time pressure on the project. CHH's Helen V Apartments are exiting the 15-year tax credit compliance period, which gives CHH full ownership. Redevelopment can only happen after exiting, during which the organization will simultaneously upgrade the existing apartments.



The LGBTQIA+ affirmative housing project is expected to have a price tag somewhere around \$25 million. CHH is planning for a contract rezone to build to seven stories with first floor retail and up to 66 permanently affordable apartments. The plan for the new affordable housing is for residents making 50% Area Median Income or lower — roughly \$33,000 a year or less for an individual. The architect on the project is 15th Ave E-based is **Environmental Works**. An informal advisory committee also brainstorms with the housing group on how to engage the community. Some groups on the committee include Bailey-Boushay House, **Gay City**, **Generations Aging with Pride**, **King County HIV/AIDS Planning Council**, **POCAAN/People of Color Against AIDS Network** and **Virginia Mason Hospital**.

Capitol Hill Housing is also talking with different medical providers about the best way to address health needs. There haven't been any decisions yet but this could mean a health-oriented retail space or a partnership-based model where providers come on site.

The building itself will also be built to suit its future residents. Door frames will likely be wider, there will be grip bars, elevators, wayfinding, and the layouts of units will be senior friendly.

We refuse to be invisible | www.friendlyhouseinc.org | (503) 228-4391



SAGE Metro Portland is a program of Friendly House.

Friendly House creates a thriving community by connecting people of all ages and backgrounds through quality educational, recreational and other life-sustaining services.

TABLE OF CONTENTS

Program Director Letter	1
Meals on Wheels Lunch	2
Gay and Grey Expo	2
SAGE Special Events	3
SAGE Ongoing Meetups	3
Volunteer for SAGE	4
SAGE Services	4
Friendly House Events	5
SAGE Photos	6

DEAR FRIENDS OF SAGE METRO PORTLAND,

Our summer has begun and the Pacific Northwest turns into a wonderland of outdoor events, farmer's markets, bountiful gardens, parties and gatherings. There are also extreme variations of heat—we've already survived several days of near 100-degree weather. Friendly House offers relief for those in need of cooler shelter during the day time. Friendly House now offers a Meals On Wheels (MoW) site Mondays and Fridays beginning at 11:30 a.m. Meals for people 60+ are free, and donations are gladly accepted (meals are available for a small price of \$7.39 for those under 60 years old). The LGBT-specific MoW site at Metropolitan Community Church (2400 NE Broadway) on Wednesdays at 11:30am, continues to operate.

At Friendly House we have many events and some are created specifically for our SAGE Metro

Portland Community. We encourage you to visit Friendly House and review the Gay and Grey newsletter for our ongoing and special events. At the end of August we embark on a new eight-week series, *The Life History Sharing Project*, through our partner VIEWS (Volunteers Involved in the Emotional Wellbeing of Seniors). This series is a safe place for LGBT older adults to explore the times, the people, and the events that helped to shape our lives and is facilitated by people from our community.

Please save the date: September 22 is our biennial Gay & Grey Expo: Aging Our Way. We'll have lunch, snacks, raffles and vendors galore. The entry fee of \$7 covers everything, but no one will be turned away for lack of funds. We will provide informational sessions on topics such as online dating (including staying safe), meditation, mindfulness and wellness, caring and advocating for trans elders, and more. We will also screen the LGBT veterans' film: *Breaking the Silence*. Please visit the website (www.gayandgreypdx.org) for the schedule and sessions as they are confirmed!

See you in September, and please do not hesitate to call us at (503) 224-2640.

Max Micozzi

Project Manager for SAGE Metro Portland

P.S. Do you know a vendor or business who should be at the Gay and Grey expo? We'd love to connect with them! Give Ryan a call at (503) 228-4391, ex 157 or email rfoemark@friendlyhouseinc.org to make the connection.

FRIENDLY HOUSE FACILITIES WILL BE CLOSED TO THE PUBLIC FOR MAINTENANCE AUGUST 20-24. OUR OFFICE WILL STILL BE OPEN FOR PHONE CALLS AND EMAILS.

JOIN US FOR COMMUNITY MEALS ON WHEELS LUNCH!

Meals on Wheels People and SAGE Metro Portland host **community lunches on Mondays and Fridays on-site at Friendly House!**

These lunches are open to all adults 60 and better, and will be especially inclusive of the LGBT community.

Doors open at 11:30 a.m.
Lunch service 12:30–1 p.m.
Mondays and Fridays
Friendly House
1737 NW 26th Ave

Meals for people 60+ are free, and donations are gladly accepted.
* For people under 60, meals cost \$7.39.
Please call Friendly House at 503-224-2640 for transportation options.



SAVE THE DATE! SEPTEMBER 22, 2018 | 9 A.M.–3:30 P.M.

Vendor Resource Fair

Film Screenings

Raffle Prizes

Breakout Sessions

TOPICS INCLUDE:

Staying Healthy on Your Feet

Housing Options

Legal Issues: Advanced Directives

Navigating Trans Healthcare

Mindfulness and Meditation

Dating in 2018

AGING OUR WAY



EXPO 2018

THE REGION'S LARGEST GATHERING FOR LGBT OLDER ADULTS AND ALLIES

Friendly House | 1737 NW 26th

\$7* | Includes breakout sessions, vendor fair, and lunch.

*No one will be turned away due to inability to pay.



Advocacy & Services for LGBT Elders

(503) 228-4391

www.gayandgreypdx.org

SAGE SPECIAL EVENTS

All events are held at Friendly House (1737 NW 26th Ave, Portland) unless noted otherwise.

COMMUNITY THEATER INTEREST MEETING

Calling all actors, set designers, costume makers, musicians and more! SAGE Metro Portland is seeking beginner and experienced theater folks alike, to assemble an LGBTQ and Ally Community Theater Group, directed by Donald St. Pierre! Come to this meeting to express interest and to get more information about the goals and plans for this group! Can't make it to the meeting? Call Ian at (503) 224-2640 for more information.

1-2:30 p.m. | Wednesday, August 15

Registration required. Call Ian at (503) 224-2640.

EIGHT-WEEK LIFE HISTORY WRITING AND SHARING

Are you interested in joining a group that examines and shares life stories? We will meet for eight weeks to share memories from specific stages of

our lives. Share with others the events that have helped to shape you. Explore the lessons you've learned in your lifetime and the legacy of wisdom you'd like to pass on.

10 a.m.-12 p.m.

Fridays, August 31-October 26

Registration required. Call Ian at (503) 224-2640.

GAY AND GREY EXPO 2018

The Gay and Grey Expo is the largest resource fair for LGBT older adults in the region! In addition to resources from local organizations and vendors, this day will include presentations and workshops on topics of healthy aging for LGBT Seniors. Come enjoy this day of learning, sharing, and community building.

9 a.m.-3:30 p.m. | Saturday, September 22

\$7 admission | Includes lunch | No one will be turned away due to inability to pay.

www.gayandgreypdx.org

SAGE ONGOING MEETUPS

SAGE does our best to have staff or volunteer representation at each of our ongoing social meetups. It can be the case, however, that there will be weeks that the happy hour events are solely community driven, without SAGE staff presence. If you are interested in being a volunteer dedicated to attending and representing SAGE at happy hour or other social events, please contact Max Micozzi at (503) 224-2640.

Meals on Wheels Lunch at FH 11:30 a.m.-1 p.m. | Mondays and Fridays

IEWS Support Group for LGBT older adults at Friendly House (FH). To register, call Peter at (503) 261-6181. 10:30 a.m.-12:30 p.m. | Tuesdays

Meals on Wheels Lunch at Metropolitan Community Church (MCC), 2400 NE Broadway. Donations gladly accepted! 11:30 a.m. | Wednesdays

LGBT Caregiver Support Group at FH. Open to any LGBT person caring for a loved one, or to any ally caregiver to an LGBT person suffering from memory loss. 11 a.m.-1 p.m. | First Wednesday of the month | August 1 | September 5

Bridge Group at FH. A drop-in bridge club for players of all levels. 2-4 p.m. | Second and fourth Wednesday of the month | August 8 (No meeting August 22) | September 12 and 26

Happy Hour at Bernie's Southern Bistro, 2904 NE Alberta Street. Meet-up with wonderful food. The back patio is not WC accessible. Street parking only, bus line #72. 4-5:30 p.m. | Third Wednesday of the month | August 15 | September 19

Milwaukie Social at Gramma's Corner, 10880 SE McLoughlin Blvd. at Monroe St. Join us for our growing social lunch hour in Clackamas County. 11:30 a.m. | Third Thursday of the month | August 16 | September 20

Social at Hobo's, 120 NW 3rd Ave. Fourth Thursday of the month, 4-6 p.m. | August 23 | September 27

VOLUNTEER FOR SAGE

FRIENDLY VISITING

The Friendly Visiting program matches volunteers with LGBT older adults to provide social opportunities, outings or in-home visiting. We match trained volunteers (both LGBT and allies) with LGBT older adults, based on location and interests. Through this program LGBT older adults can feel free to express themselves without fear while having companionship. We ask volunteers to commit to weekly visits in-person or by phone.

DRIVE FOR SENIOR TRIPS

Have fun volunteering while exploring the hidden beauty that Oregon has to offer! Friendly House is seeking volunteers to drive seniors to fun destinations and outdoor adventures. Interested

volunteers must successfully complete a training, criminal background check and drug screening. volunteer@friendlyhouseinc.org | (503) 224-2640 www.friendlyhouseinc.org/volunteer

HOUSING COMMITTEE

Join if you are interested in advocating for more welcoming and inclusive senior housing options for LGBT older adults. These meetings require a quick pre-screening to assure a good fit. **12:30 p.m. Second Wednesdays of the month | At Friendly House (1737 NW 26th Ave)**

SAGE METRO PORTLAND SERVICES

SUPPORT—SAGE Metro Portland offers Options Counseling, Case Management, and Information and Referral services to LGBT seniors (60 and better) living in Multnomah County, offering support in finding and accessing resources, decision making and aging service system navigation.

ADVOCACY—SAGE Metro Portland advocates for all LGBT seniors, locally and nationally. This includes involvement with legislative and community leaders, partnerships with senior housing providers, and connection to the SAGE National network.

HOUSING—We advocate for safe and welcoming housing for LGBT older adults. We work directly with senior housing facilities to create lasting change and welcoming, inclusive environments.

COMMUNITY BUILDING—SAGE Metro Portland hosts weekly social groups at local restaurants to promote networking and community building. We also hold special events including the Gay & Grey Expo (a health and resource fair for LGBT seniors, professionals and allies), Pride events, holiday parties, and guest speakers!



Welcome Home
Communities^{LLC}

Adult Care Homes

now two locations

Welcome Home Kenton
Welcome Home Hazelwood

whcommunities.com

971.227.9947

FRIENDLY HOUSE EVENTS AND ACTIVITIES

All events are held at Friendly House (1737 NW 26th Ave, Portland) unless noted otherwise.

COMMUNITY NIGHTS

Summer Bingo

Come on over for some summer outdoor bingo! Enjoy warm summer nights and fresh fruit with this intergenerational bingo game. This event is open to anybody—bring your family and bring your friends! Come by, get to know your neighbors, have some fun, and win some prizes! Sponsored by Legacy Health Services.

6–7 p.m. | First Friday of every month (August 3, September 7)

Free

Game Night—Mexican Train Dominos

6–7:30 p.m. | Friday, August 10

Ice Cream Social

Friends of Friendly House will gather on this dog-day of summer to make and enjoy some yummy ice cream!

6–7:30 p.m. | Friday, August 17

Arts & Crafts Night

We will kick off labor day weekend with some fun arts and crafts projects for all ages.

6–7:30 p.m. | Friday, August 31

PEACE EDUCATION PROGRAM

The Peace Education Program (PEP) consists of 10 sessions, each focusing on a particular theme. These customized, interactive workshops are non-religious and non-sectarian. The content of each theme is based on excerpts from Prem Rawat's international talks. The themes, presented in order, are: Peace, Appreciation, Inner Strength, Self-Awareness, Clarity, Understanding, Dignity, Choice, Hope, and Contentment.

2:30–3:30 p.m. | Tuesdays in July, August, and September (July 10–September 18)

No session on August 20

Free

FRIENDS AND FAMILY NIGHT AT MCMENAMINS TAVERN & POOL

McMenamins will donate 50% of all proceeds to Friendly House! This is a family-friendly event with Friendly House staff, board, volunteers and friends!

5–9 pm. | Tuesday, September 25

McMenamins Tavern and Pool (1716 NW 23rd Ave)

THE SAGE LGBT ELDER HOTLINE

operated by the
GLBT National Help Center

NO MATTER WHERE THEY
LIVE, LGBT elders now have a place
to call when they need peer counseling,
information and local resources.

The holidays can be a lonely time.
We are here to listen.

LGBT VOLUNTEERS

are trained to speak with LGBT older
people about relationship concerns,
bullying, workplace issues, HIV/AIDS,
anxiety, safer-sex information and more!

Learn more at sageusa.org/hotline.

CALL TOLL-FREE
1-888-234-SAGE

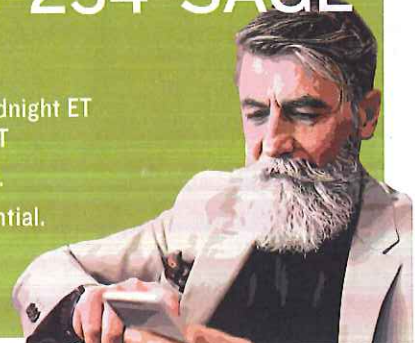
HOURS

Mon-Fri: 4pm-Midnight ET
Sat: Noon-5pm ET

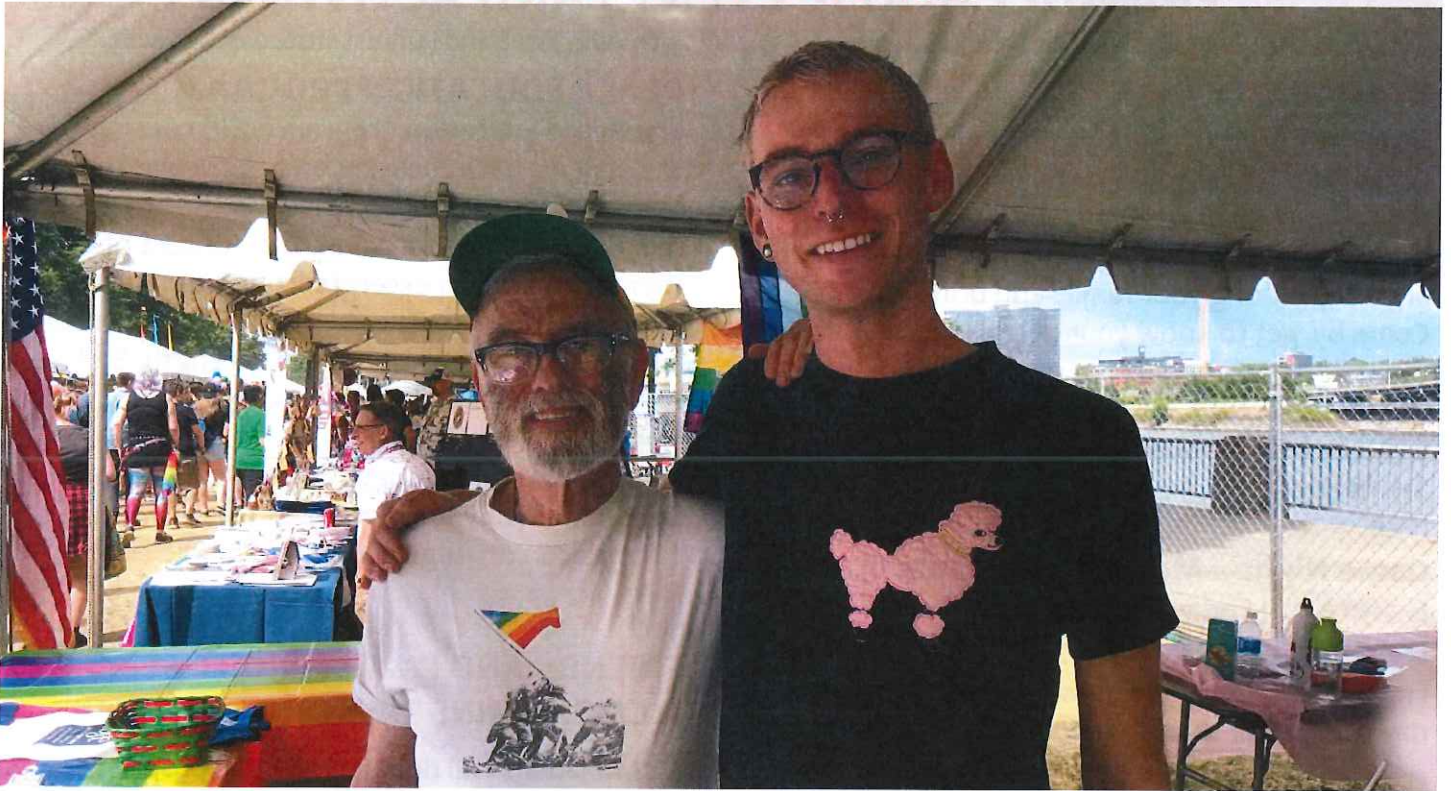
Se habla Español.

Free and confidential.

sage



PRIDE WEEKEND 2018



LGBT OLDER ADULT CANOE TRIP



LGBT Older Adult and Ally Community Theater Group Interest Meeting

Calling all with an interest in participating in
a community theater group!

Wednesday, August 15th, 1-2:30pm
at Friendly House (1737 NW 26th Ave)
Registration Required. Call Ian at (503) 224-2640

All experience levels and areas of interest welcome!
This group prioritizes providing a safe space for
sexual, gender, and racial minorities. All are welcome.

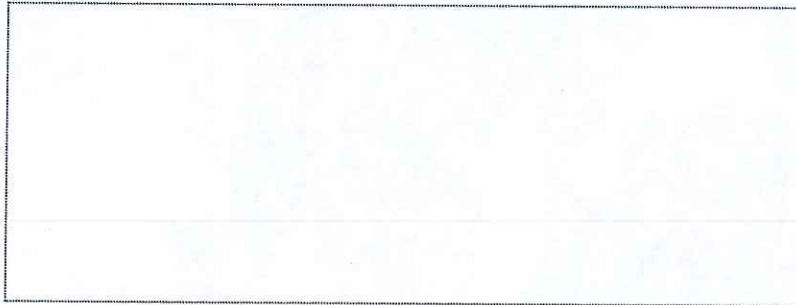


Advocacy & Services for LGBT Elders

NONPROFIT ORG.
PORTLAND, OR
U.S. POSTAGE PAID
PERMIT NO. 96

2617 NW Savier St.
Portland, OR 97210

RETURN SERVICE REQUESTED



INFORMATION & REFERRAL

(503) 224-2640 | sage@friendlyhouseinc.org

Friendly House can assist with information and referral services concerning benefits counseling, housing, legal support, end of life planning, health and wellness classes, social and support groups, and many other resources that support independence and dignity in aging.

SENIOR LAW PROGRAM

Free 30-minute appointments with an attorney on 1st and 3rd Thursdays of the month.

SENIOR HEALTH AND INSURANCE BENEFITS ASSISTANCE (SHIBA)

Free individual assistance with health insurance benefits or questions.

SUPPORT SAGE

SAGE is supported by foundation grants and individual donors. Please consider Friendly House and SAGE in your estate plan.

Would you like to advertise in our quarterly newsletter? We love partnering with local businesses!

To learn about all the different ways you can support SAGE Metro Portland and Friendly House, contact our Development and Marketing Department: (503) 228-4391 | donate@friendlyhouseinc.org

WWW.FRIENDLYHOUSEINC.ORG



Green Sheet 14-13-A-1-2019

Add \$249,000 GF in 2019 and \$249,000 GF in 2020 for services to LGBTQ seniors

Sponsors: CM Gonzalez & CM Herbold

LGBTQ Estimated Population & Available Senior Services In Major Cities

	Estimated LGBTQ Population	Community Center	Training/TA	Housing Development	Housing Support	Social Programming	Food Access
San Francisco	6.2%	X	X	X	X	X	X
Portland	5.4%		X		X	X	X
Austin	5.3%	X	X	X			
New Orleans	5.1%	X	X			X	
Seattle	4.8%			X		X	X
Boston	4.8%	X	X			X	X
Los Angeles	4.6%	X	X	X	X	X	X
New York City	4.0%	X	X	X	X	X	X

Note: NYC has the largest LGBTQ population by census