

Director's Report

Sam Assefa

May 1, 2019



Our Mission

An inspiring city, in harmony with nature, where everyone thrives.

Our Vision

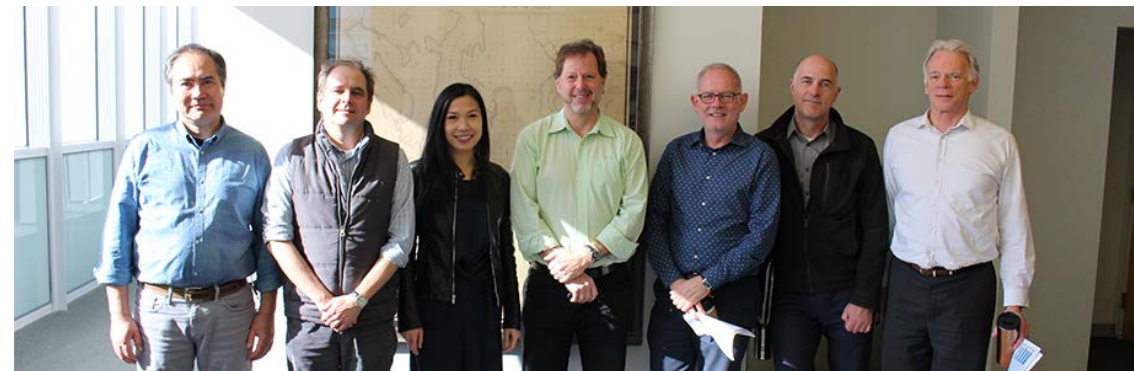
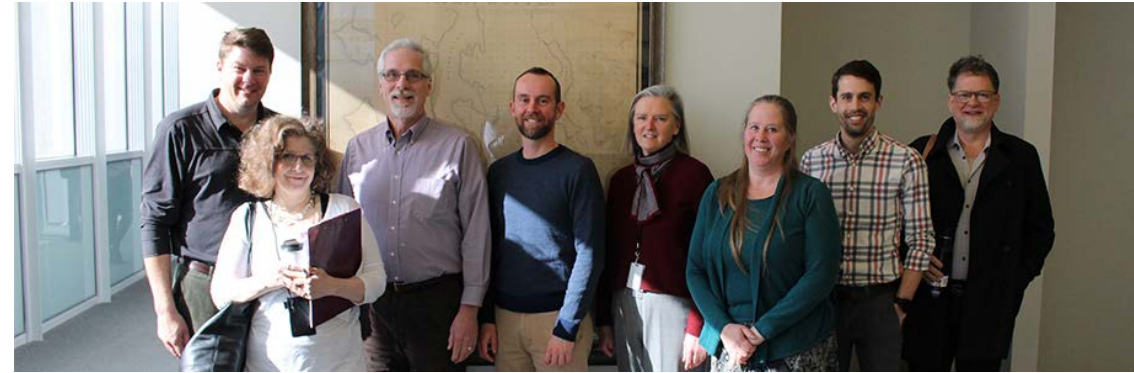
We lead collaborative planning, advance equitable development, and create great places.

Our Values

Innovation, Inclusion, Service, Respect, Integrity

Organization

- **Citywide Initiatives**
 - Comprehensive and Regional Planning
 - Land Use Policy
 - Housing Affordability
 - Research & Data
- **Community Planning and Action**
 - Equitable Development Initiative
 - Localized planning
 - Station-area TOD planning
- **Placemaking**
 - Design guidelines
 - Public realm planning
 - Public project review
 - Site-specific partnerships.
- **Design Commission**
 - Civic design excellence in capital improvement projects
- **Planning Commission (co-located w/OPCD)**
 - Broad planning goals, policies and plans



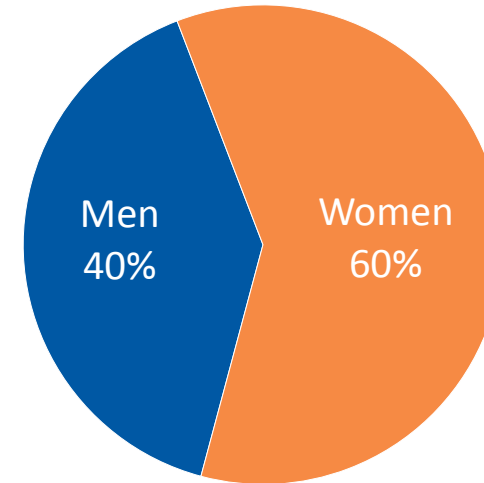
2019 Staffing

Office of Planning and Community Development	44.0 FTE
Director's Office & Project Management Resources	10.0
Planning & Community Development	27.0
Comprehensive Planning	5.0
Equitable Development Initiative	6.0
Community and Citywide Planning	10.0
Placemaking	6.0
Seattle Planning Commission	3.5
Seattle Design Commission	3.5

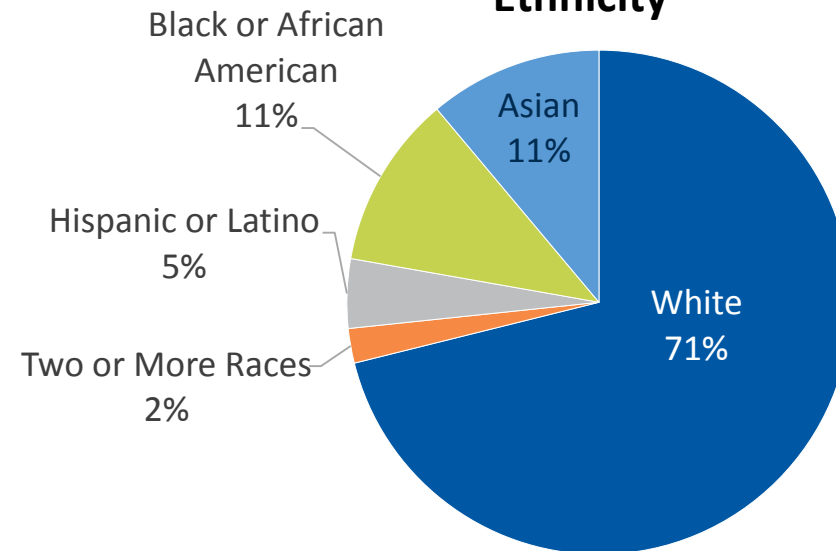
Workforce Equity

- 44 employees
 - 29% identified as people of color
 - 60% identified as women
- 7 new employees in 2018
 - 43% identified as people of color
 - 71% identified as women
- 4 promotions in 2018
 - 25% identified as people of color
 - 75% identified as women

Gender



Ethnicity



2019/20 OPCD Budget

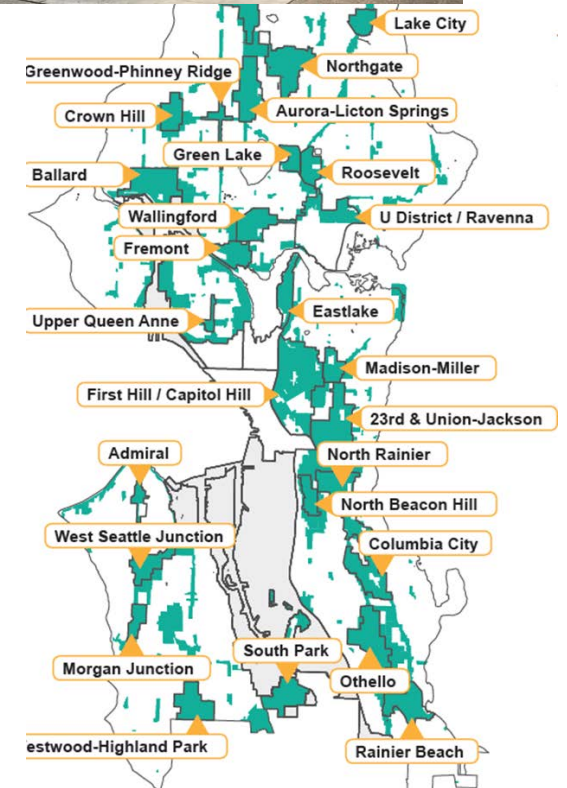
	2019 Adopted Budget		2020 Endorsed Budget	
	Funding	FTE	Funding	FTE
Planning	\$12,193,927	37.50	\$11,119,640	37.50
Planning Commission	\$565,170	3.50	\$559,801	3.50
Design Commission	\$546,136	3.50	\$539,950	3.50
Total	\$13,305,233	44.00	\$12,219,391	44.00

Overview of OPCD 2018/2019 Work Plan

2018 Accomplishments	2019 Projects
<ul style="list-style-type: none">• Uptown Design Guidelines• U District Design Guidelines• Mandatory Housing Affordability -- Citywide• Second round of EDI Funding• Duwamish Valley Action Plan• ADU/DADU	<ul style="list-style-type: none">• Imagine Greater Downtown• Sound Transit 3• Comprehensive Plan• EDI 2019 Funding + Monitoring Report• I-5 Lid• Duwamish Valley Action Plan Implementation• Crown Hill Community Plan• 130th & 145th Station Area Plan visioning phase• Westwood / Highland Park• Responding to Resolutions / Executive Orders• Mt Baker Redevelopment• Ballard Design Guidelines• Capitol Hill Guidelines

2018 Accomplishments

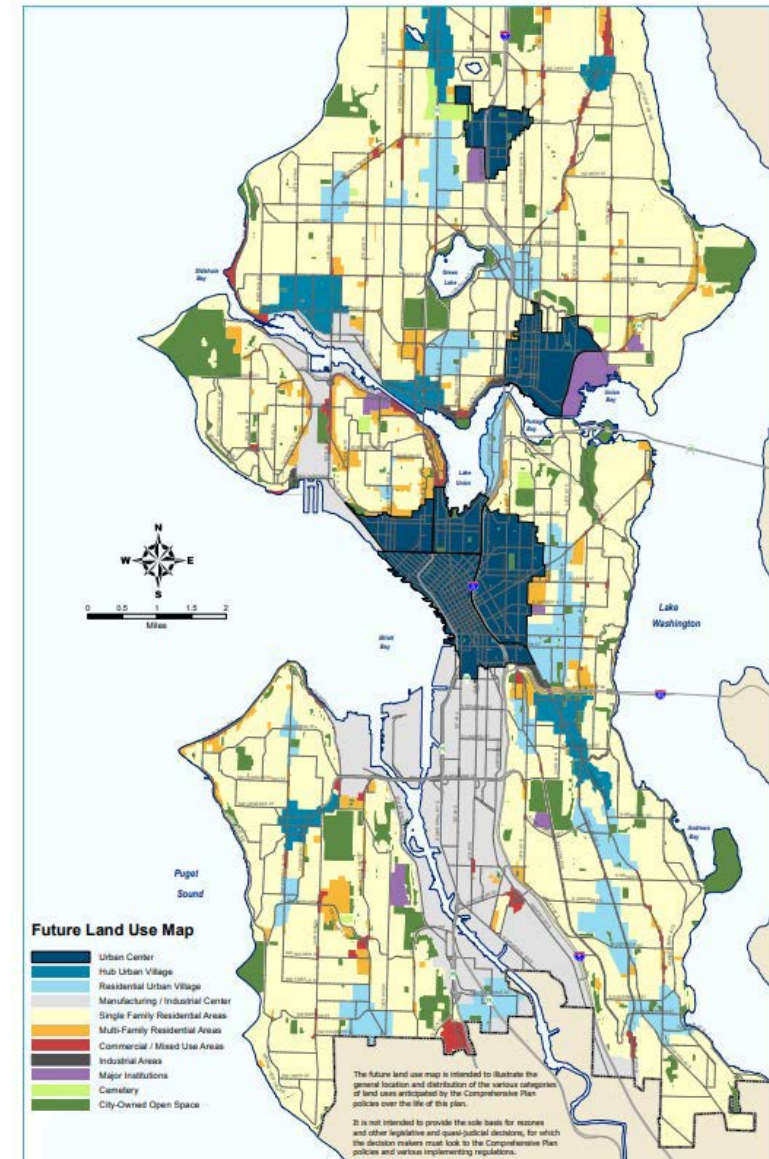
- **Mandatory Housing Affordability (MHA)**
 - All multi-family residential & commercial development will now contribute to affordable housing
- **EDI Round 2 Funding to expand partnerships to 15 projects**
 - Refugee and Immigrant Family Center property acquisition
 - Community-initiated projects to fight residential, commercial and cultural displacement
- **Duwamish Valley Action Plan**
 - Coordinated city investment



2019 WORKPLAN

Seattle Comprehensive Plan

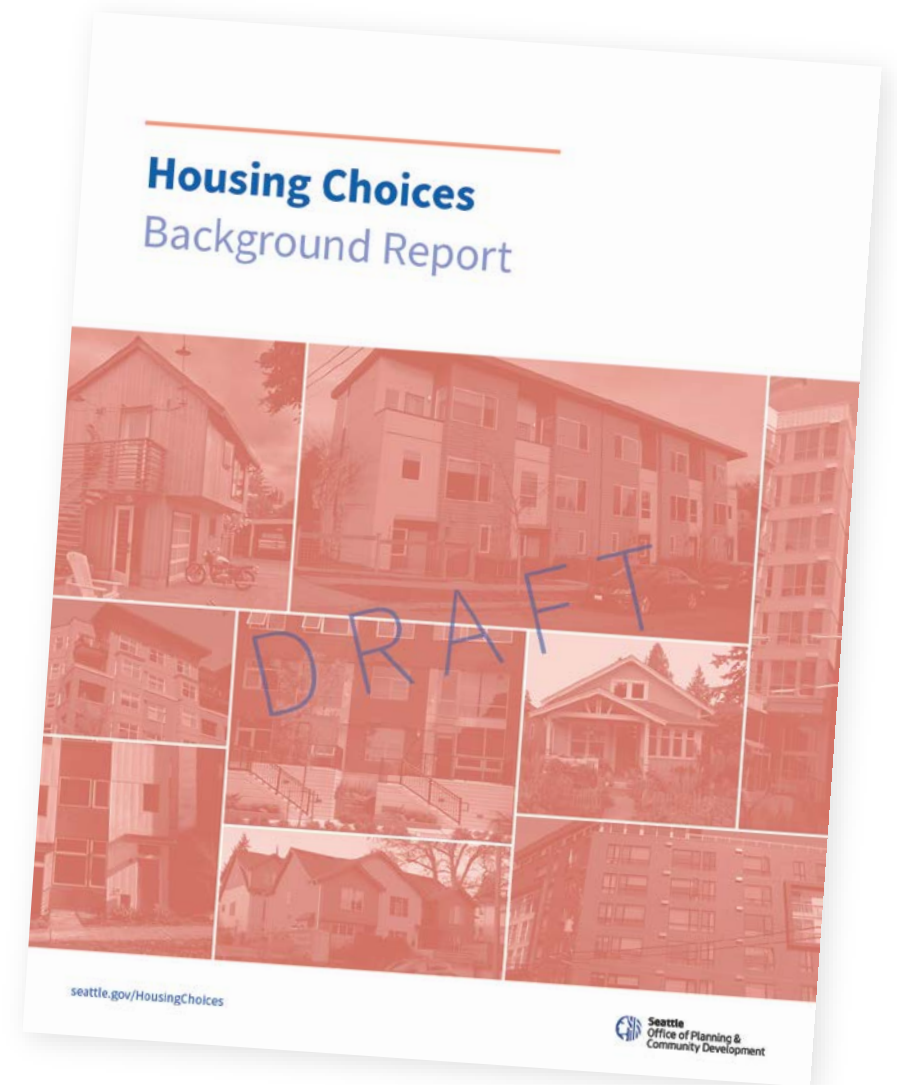
- Early project planning underway for the next major update
 - Identifying staffing and budget
 - Developing framework for racial equity analysis
 - Exploring community engagement strategies
 - Evaluating potential approaches to environmental analysis
- Comp Plan update due in 2023



2019 WORKPLAN

Housing Choices

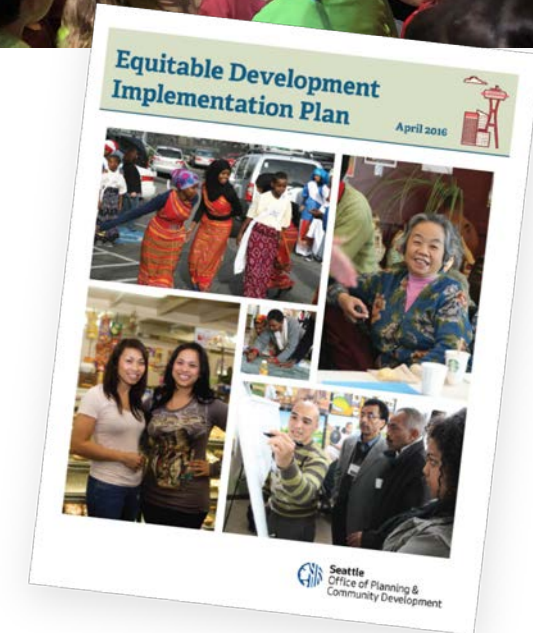
- Data-intensive background report – May 2019
- Describes available market-rate housing for rent & ownership
 - Who is being served? Who must look elsewhere?
- Community engagement planned for summer 2019
- Will inform the work of Mayor Durkan's Affordable Middle Income Housing Advisory Committee
- AMIHAC recommendations to the Mayor expected in late 2019



2019 WORKPLAN

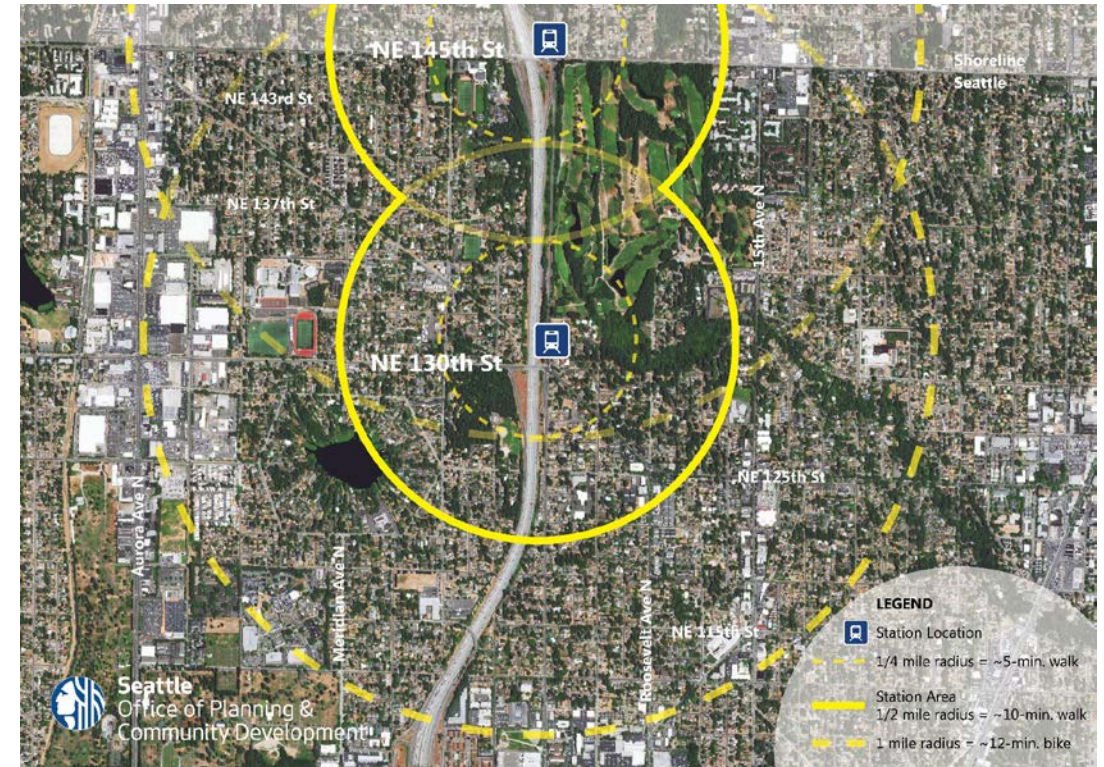
EDI Funding & Monitoring Report

- 2019 Funding cycle announced in April
 - \$5 million per year
 - Applications for 2019 awards are due June 5
- Monitoring Report Phase 1 – 2019
 - Equitable Development Outcome Indicators
- Monitoring Report Phase 2 – 2020
 - Heightened Displacement Risk Indicators



130th / 145th Station Area Planning

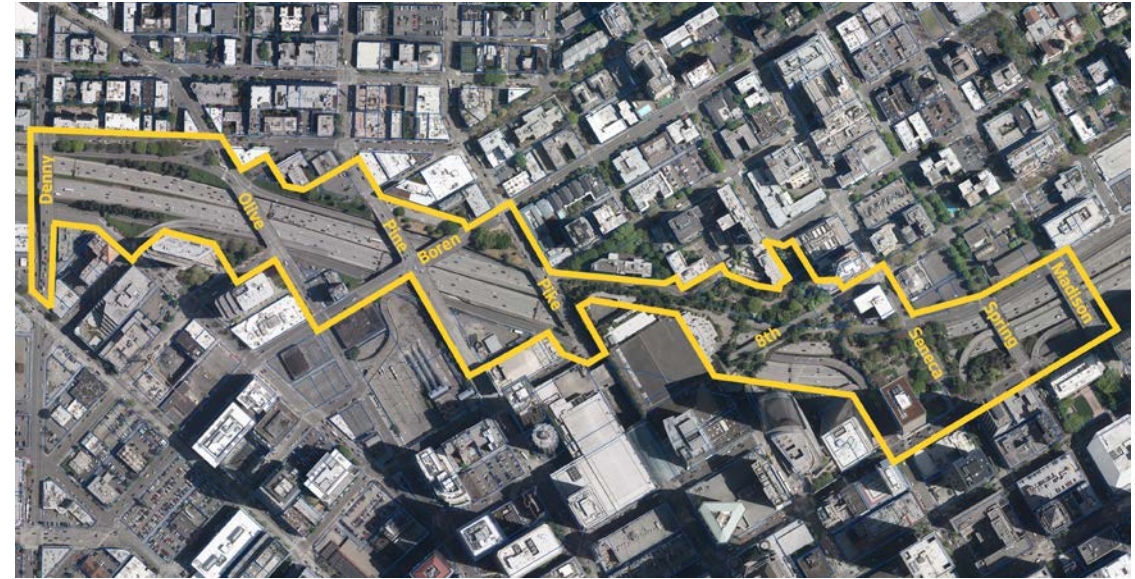
- Station area planning
 - Land use
 - Station access projects
- Mobility planning
 - Bicycle network
 - Transit connections
- Infrastructure improvements
 - 145th Ave BRT Stations
 - 145th Multi-modal Corridor Plan
 - I-5 & 145th Interchange Project



2019 WORKPLAN

I-5 Lid Feasibility Study

- \$1.5m study funded by Washington State Convention Center expansion
- 15 acre site with transformative potential
- WSP selected as project consultant
- Community advisory group will help steer which options evaluated
- Engineering and financial study completed in early 2020



2019 WORKPLAN

ST3 Station Area Planning

- West Seattle/Ballard: 14 new stations
- Ongoing OPCD-ST collaboration on Racial Equity Analysis
- Downtown alignment will include significant changes in public realm
- Design standards for all new stations
- Opportunities for equitable transit-oriented development
- Community planning for housing and other changes near future stations



2019 WORKPLAN

MHA Follow-up

- Council's MHA Companion Resolution
 - Incentives for family-sized homes, housing options for diversity of households
 - Monitor changes in housing development, tree canopy
 - Planning in neighborhood areas
 - Compatible historic infill
- Mayor's Executive Order on Displacement
 - Expand housing choices
 - Affirms EDI effort to fight displacement and gentrification
 - Explore equitable options in Opportunity Zones
 - Work with neighborhood areas
 - Compatible historic infill





Thank you

Sam Assefa, Director
Samuel.Assefa@seattle.gov

OPCD