



# 2019 Program Update: Creating Strong Communities Through Healthy Forests

Seattle City Council Presentation

October 21, 2019

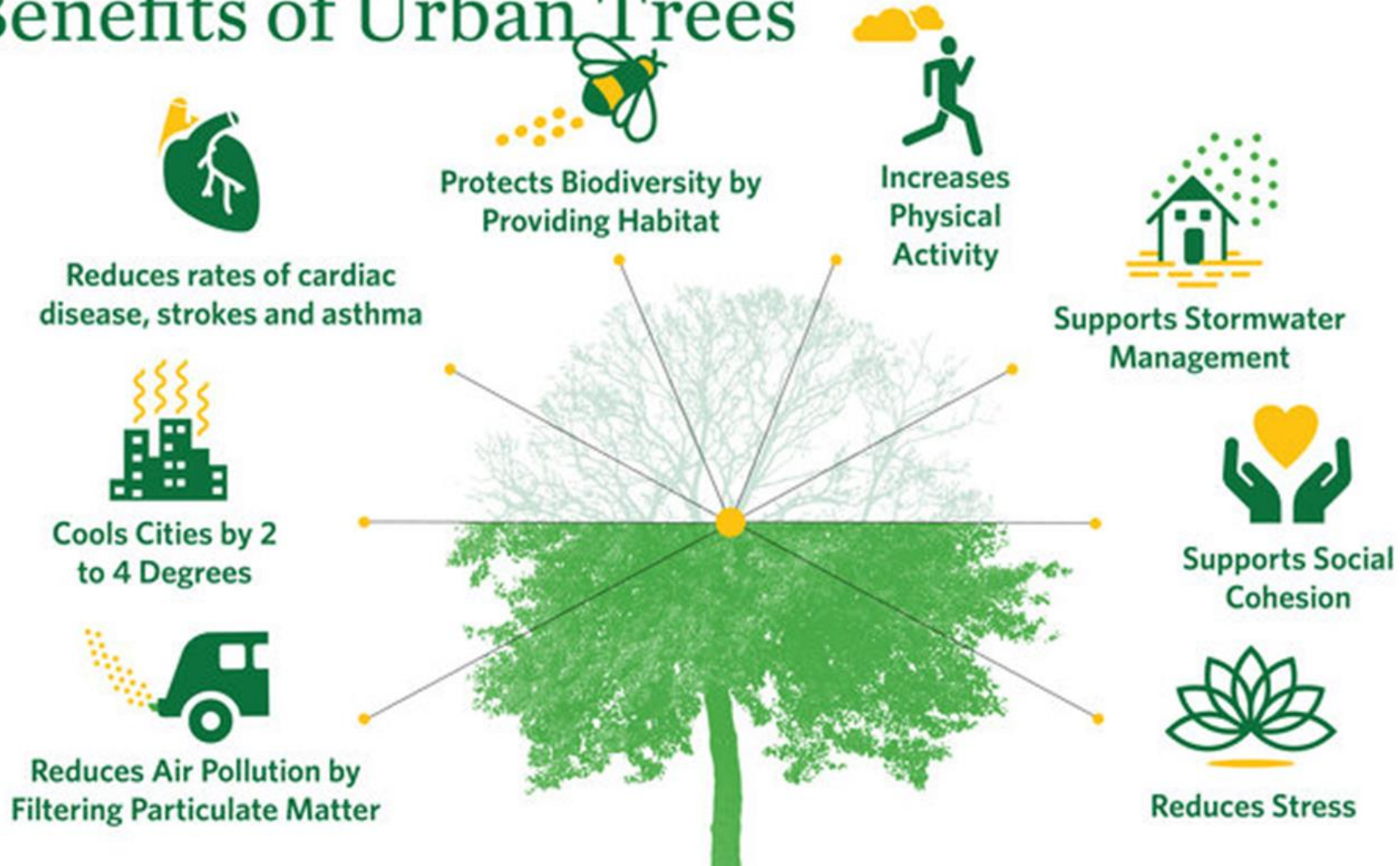
Seattle Parks and Recreation



City of Seattle



# Benefits of Urban Trees



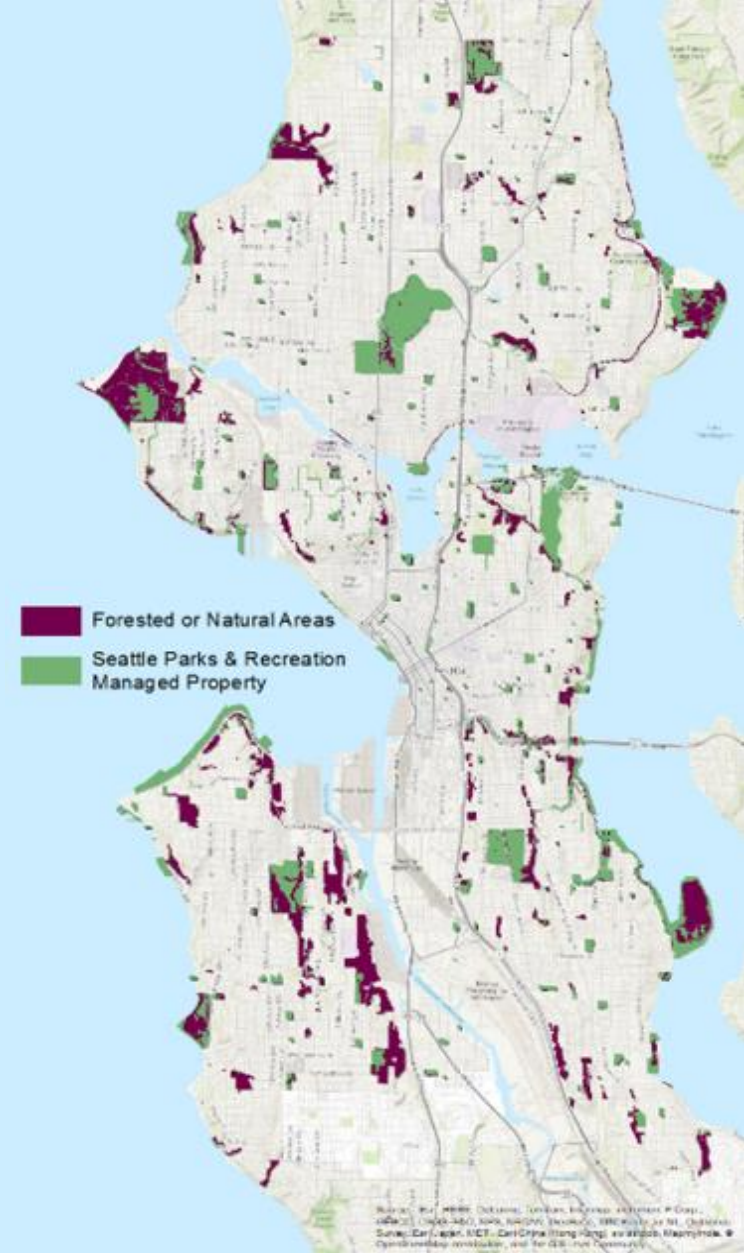


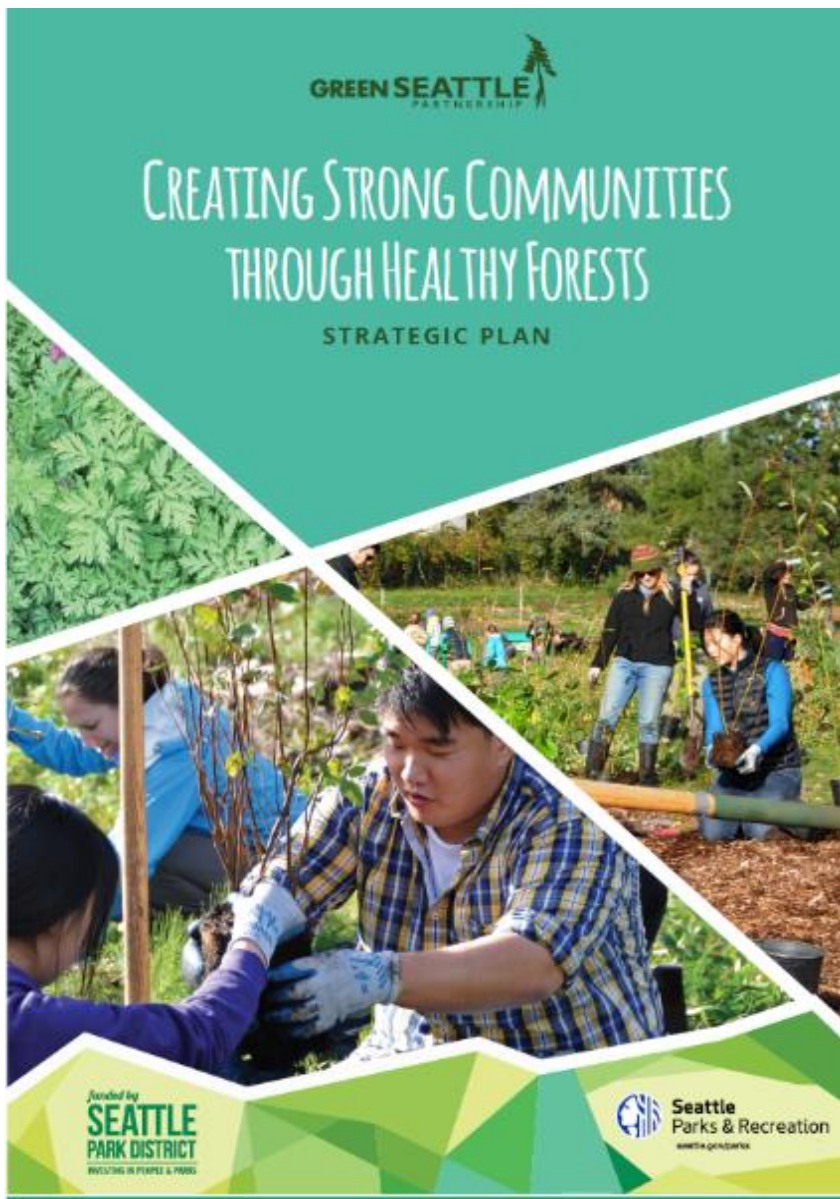
# Seattle Parks & Recreation

**Mission:** Seattle Parks and Recreation provides welcoming and safe opportunities to play, learn, contemplate and build community, and promotes responsible stewardship of the land. We promote healthy people, a healthy environment and strong communities.

**6,400+** acres - **11%** of the land base

**2,500+** acres destined for ecological restoration





# GSP Goals

- 1 Restore and maintain the forested parklands and designated natural areas of Seattle.
- 2 Expand and galvanize an informed, involved, and active community around forest restoration and stewardship.



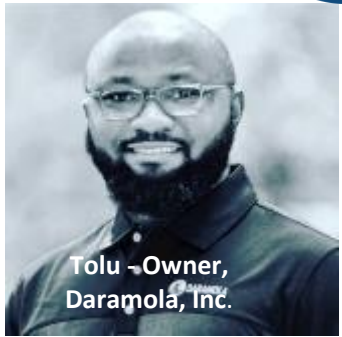




# Alumni Impact



Joanna Nelson de Flores  
Stewardship Managing Director  
Forterra



Tolu - Owner,  
Daramola, Inc.



Alberto Rodriguez  
Duwamish Advisor  
City of Seattle



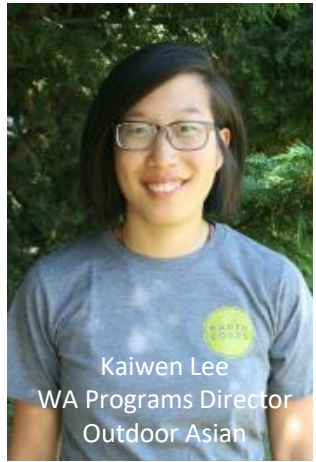
Lylianna Alalla  
Equity and Environment Manager  
City of Seattle



Alyssa Henry  
Volunteer Manager  
Arboretum Foundation



Britt Le  
Community Partnerships and  
Leadership Coordinator  
WTA



Kaiwen Lee  
WA Programs Director  
Outdoor Asian



Justin Howell  
Owner  
Applied Ecology



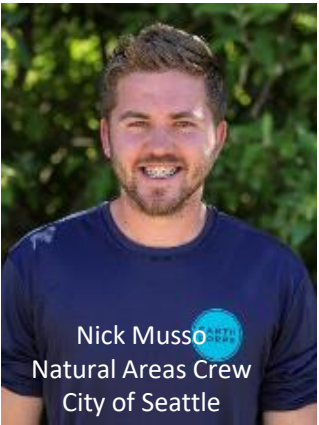
Mario Flores  
Co-Executive Director  
Global Visionaries



Randi Shaw  
Stewardship Manager  
The Nature Conservancy



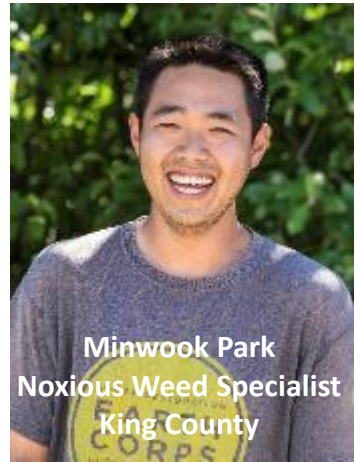
EarthCorps  
Dan Hintz  
Restoration Manager  
Mountains to Sound



Nick Musso  
Natural Areas Crew  
City of Seattle



Nicole Marcotte  
Green Cities Manager  
Forterra



Minwook Park  
Noxious Weed Specialist  
King County









# Partnership Accomplishments

**1,691** acres initiated

plants in the ground **1 Million+**

**243** acres mulched

**2,937** acres weeded

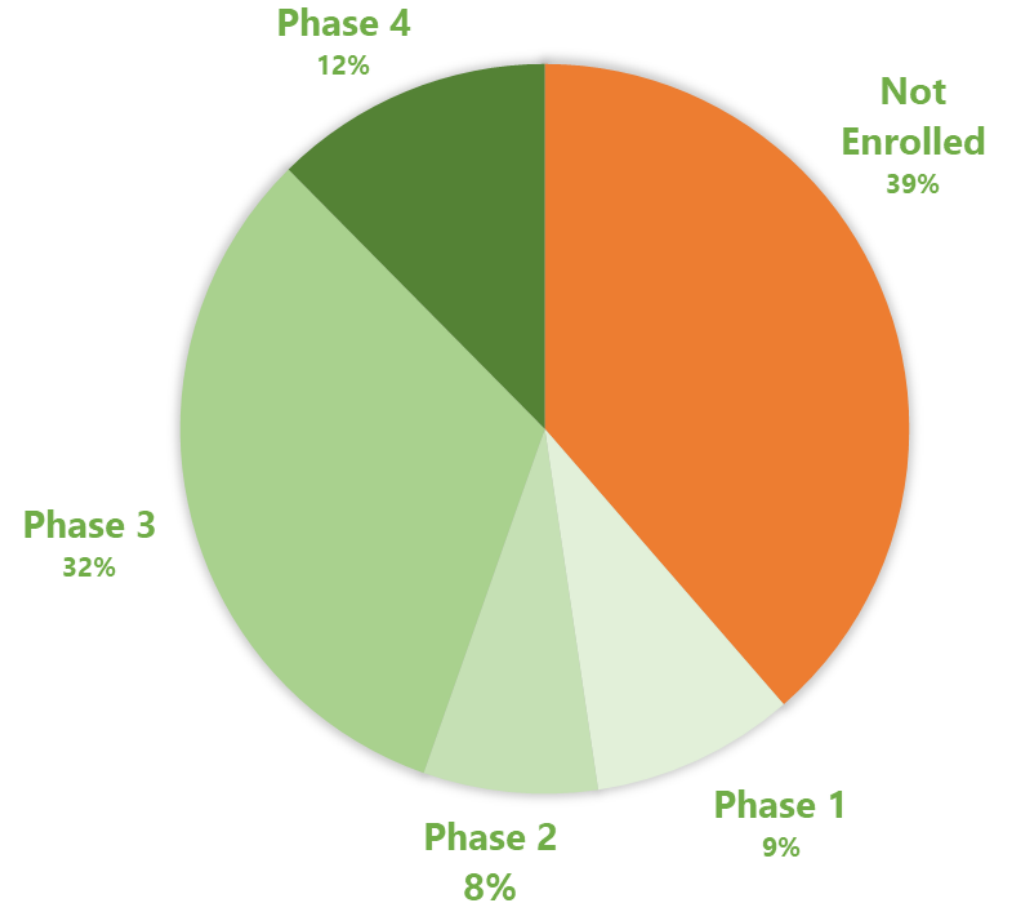
volunteer hours **1 Million+**

**408,000+** professional crew hours

Tree survival rings **36,933**

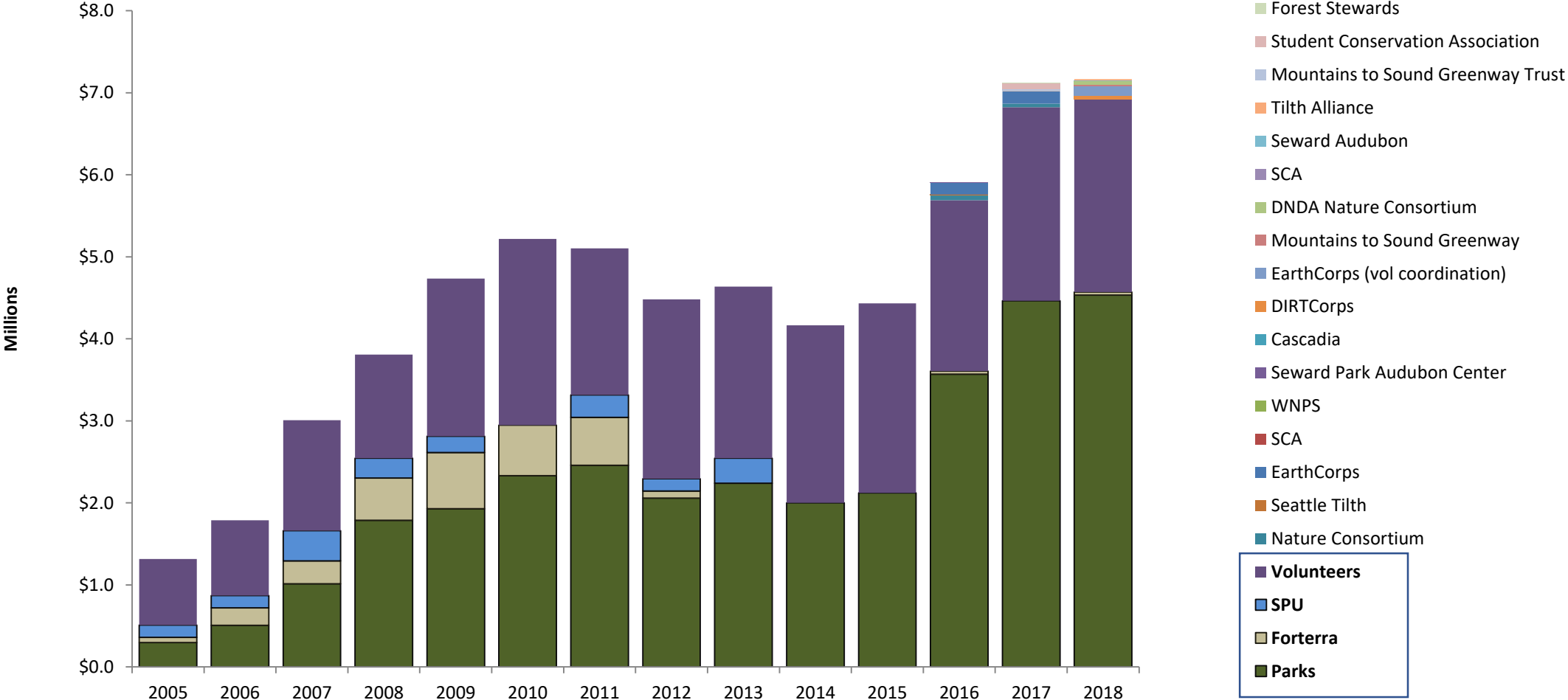


# Progress to Date



Acres enrolled: **1,691**  
Acres in Phase 4: **342**  
Acres in Phases 1-3: **1,349**

# Green Seattle Partnership Funding

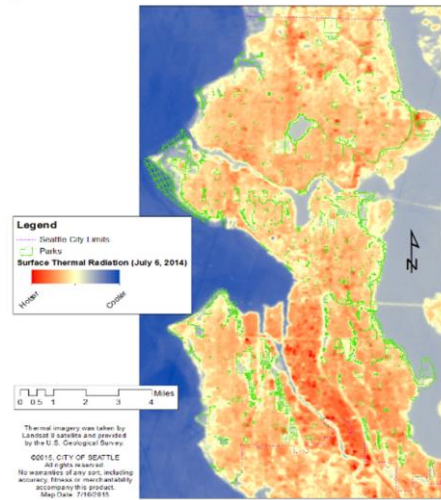


# Restoring and Unlocking Greenspaces

Increasing access to nature and human health



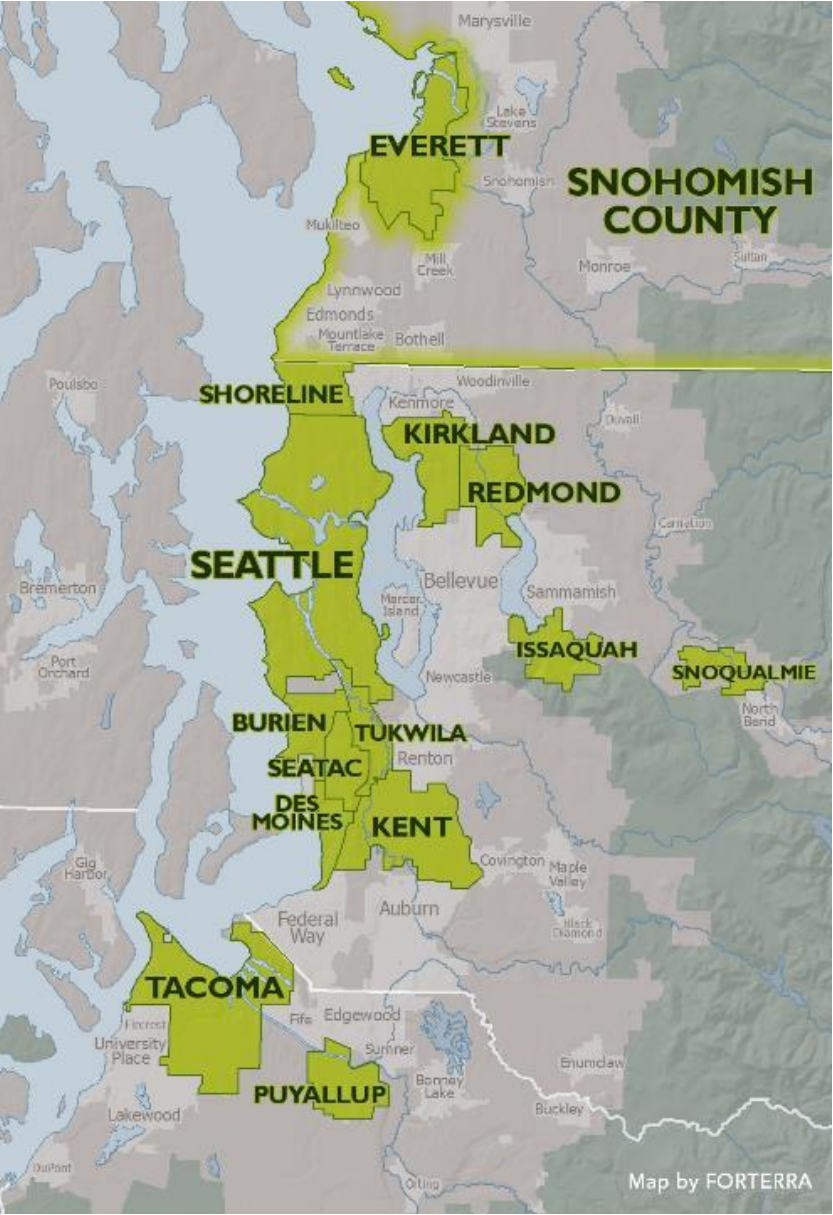
Strengthening neighborhood cohesion



Increasing climate resiliency

Improving the health of wildlife habitat and Puget Sound

# Growing a Regional Network of Healthy Urban Forest



### Program to Date (2005-2019)

- 15 Green Cities/County
- Restoration Goal: 13,000 acres
- Serving more than 1.6 M people

**FORTERRA**





# Untapped Common Ground: The Care of Forested Natural Areas in American Cities



Yale SCHOOL OF FORESTRY &  
ENVIRONMENTAL STUDIES



PLANT A FOREST - GROW COMMUNITY

# GREEN SEATTLE DAY

SAT. NOVEMBER 2<sup>ND</sup> - STARTS 9 AM

REGISTER TODAY AT [GREENSEATTLE.ORG](http://GREENSEATTLE.ORG)

SIGN UP IN ADVANCE AT [GREENSEATTLE.ORG](http://GREENSEATTLE.ORG) TO VOLUNTEER AT ONE OF THESE PARKS

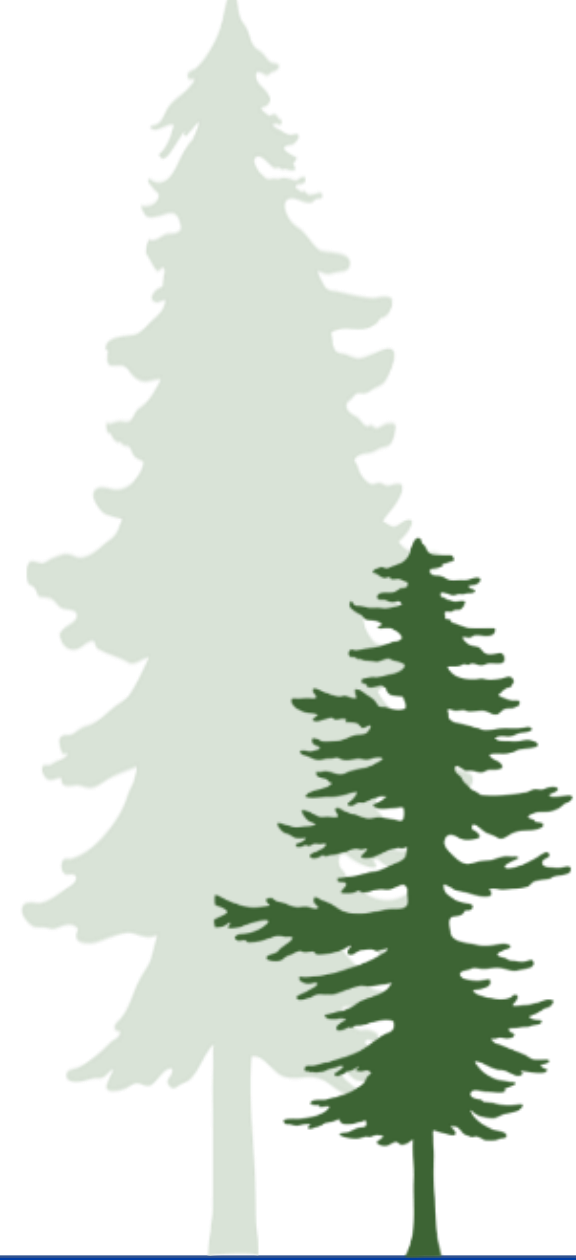
**GREEN SEATTLE**  
PARTNERSHIP

**Patti Bakker, Seattle Parks and Recreation**

**Joanna Nelson de Flores, Forterra**

**[www.greenseattle.org](http://www.greenseattle.org)**

**Thank You!**



**Seattle  
Parks & Recreation**

healthy people healthy environment strong communities

