

Pearl Street Drainage & Wastewater Improvements Project

Property Acquisition

Civil Rights, Utilities, Economic
Development and Arts Committee

May 22, 2018

Permit Requirements

- SPU is regulated to reduce sewer overflows
- No more than four sewer overflows per 100 miles of pipe per year on a two-year average

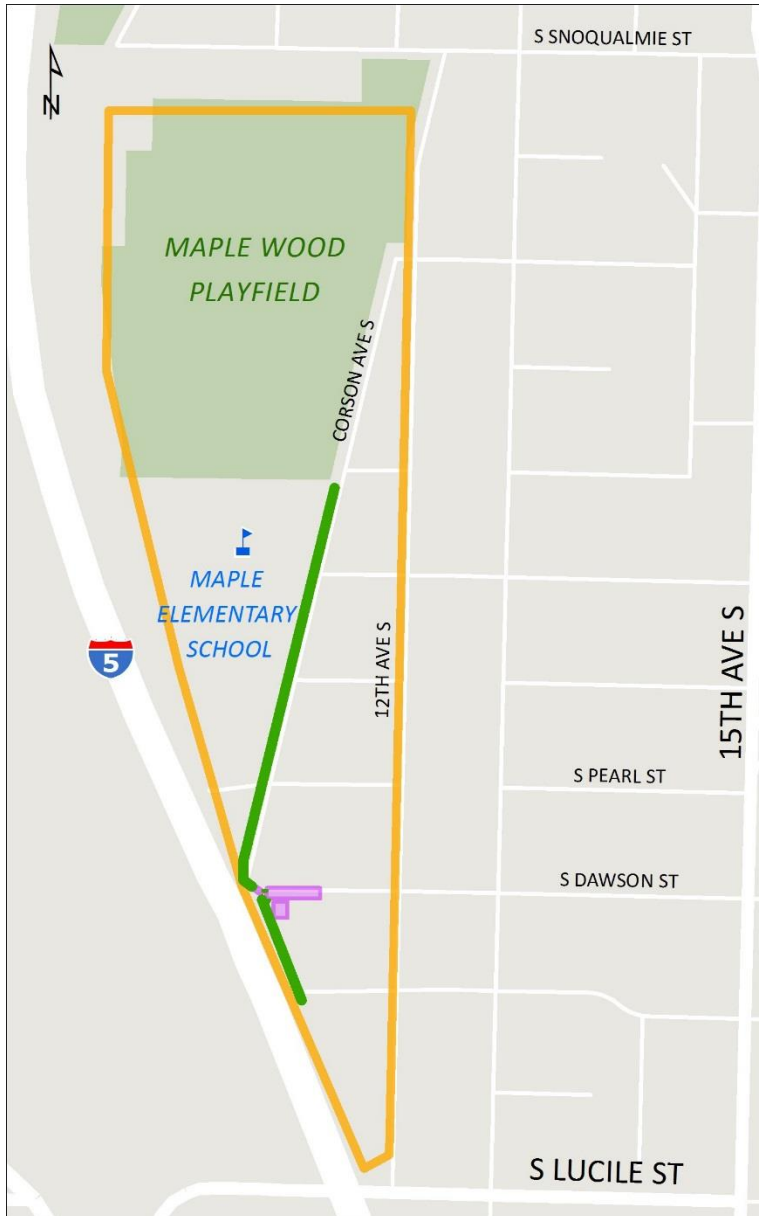


Community & Project Drivers

- Single Family Residential
- Diverse community
- *Sewer overflows*

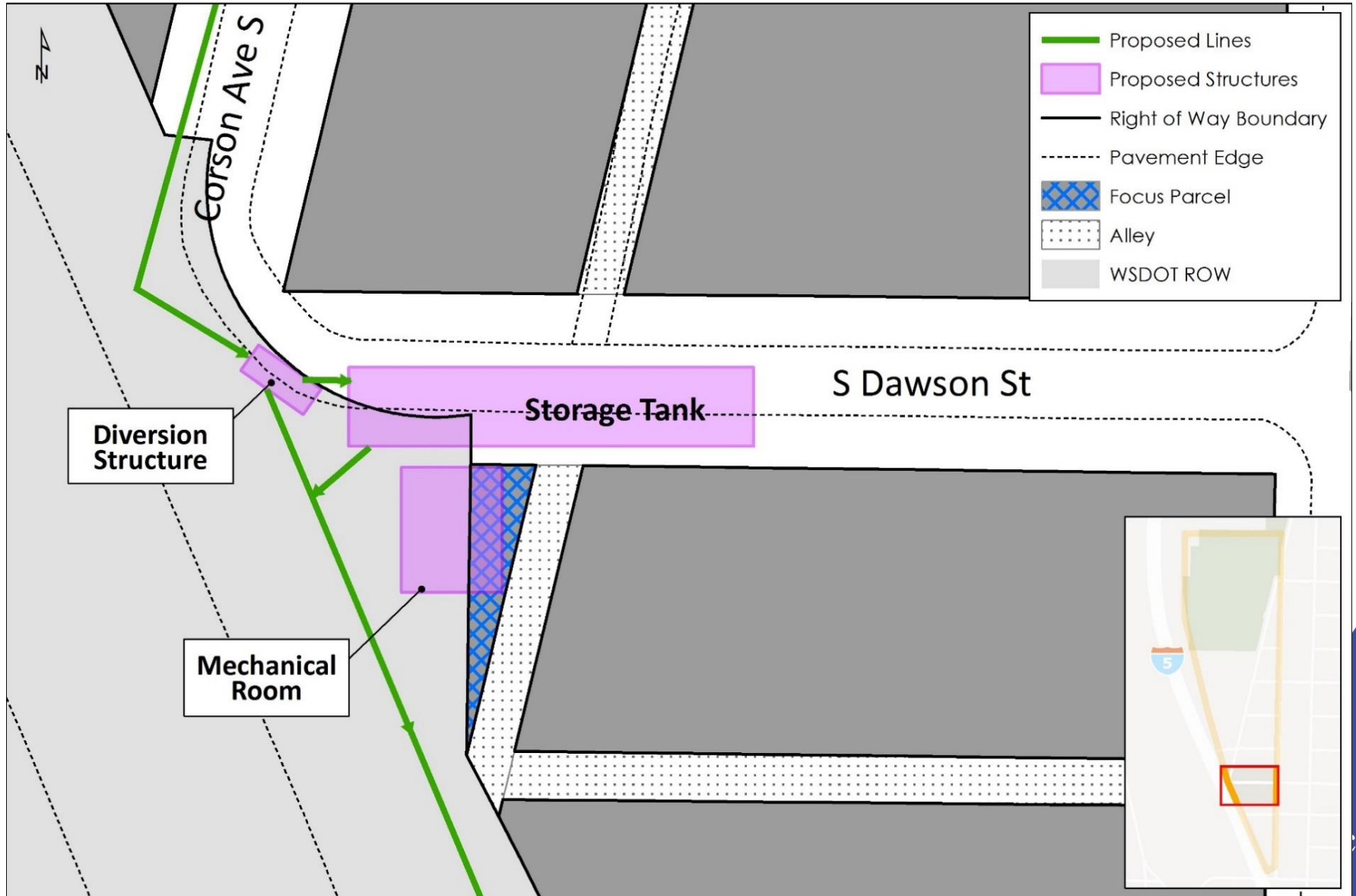


Project Solution



- Improves Sewer Capacity
- Provides storage for combined sewage

Project Improvements



Property Acquisition



Property Acquisition

- Small (788 sf) undevelopable parcel
- Willing seller and a negotiated price
- Project benefits include improving public health with sewer system updates, as well as an improved customer experience
- Ordinance approves purchase, using eminent domain, if necessary, and approves acquiring permits from WSDOT

Questions