



The background is a map of the Crown Hill Urban Village. A thick purple line outlines the village boundary. Landmarks are marked with blue location pins and labels: Soundview Playfield (green box), Crown Hill Glen, Fire Station 35, Holman Grove, Labateyah Youth Home, Crown Hill Cemetery, and Baker Park (green box). Street names include NW 92ND ST, NW 90TH ST, NW 88TH ST, NW 87TH ST, NW 83RD ST, NW 80TH ST, 21ST AVE NW, 10TH AVE NW, 9TH AVE NW, DIBBLE AVE NW, and 8TH AVE NW. Two overlapping circles, one light blue and one dark purple, are on the left side of the map.

Crown Hill Urban Village

Action Plan

LUN Committee Briefing – December 2021

Overview

1. Background
2. Process & Engagement
3. The Action Plan
4. Next Steps

BACKGROUND

Soundview Playfield

Crown Hill Glen

Fire Station 35

Holman Grove

Labateyah Youth Home

Crown Hill Cemetery

Baker Park

NW 92ND ST

NW 90TH ST

NW 88TH ST

NW 87TH ST

NW 85TH ST

NW 83RD ST

NW 80TH ST

21ST AVE NW

AVE NW

AVE NW

10TH AVE NW

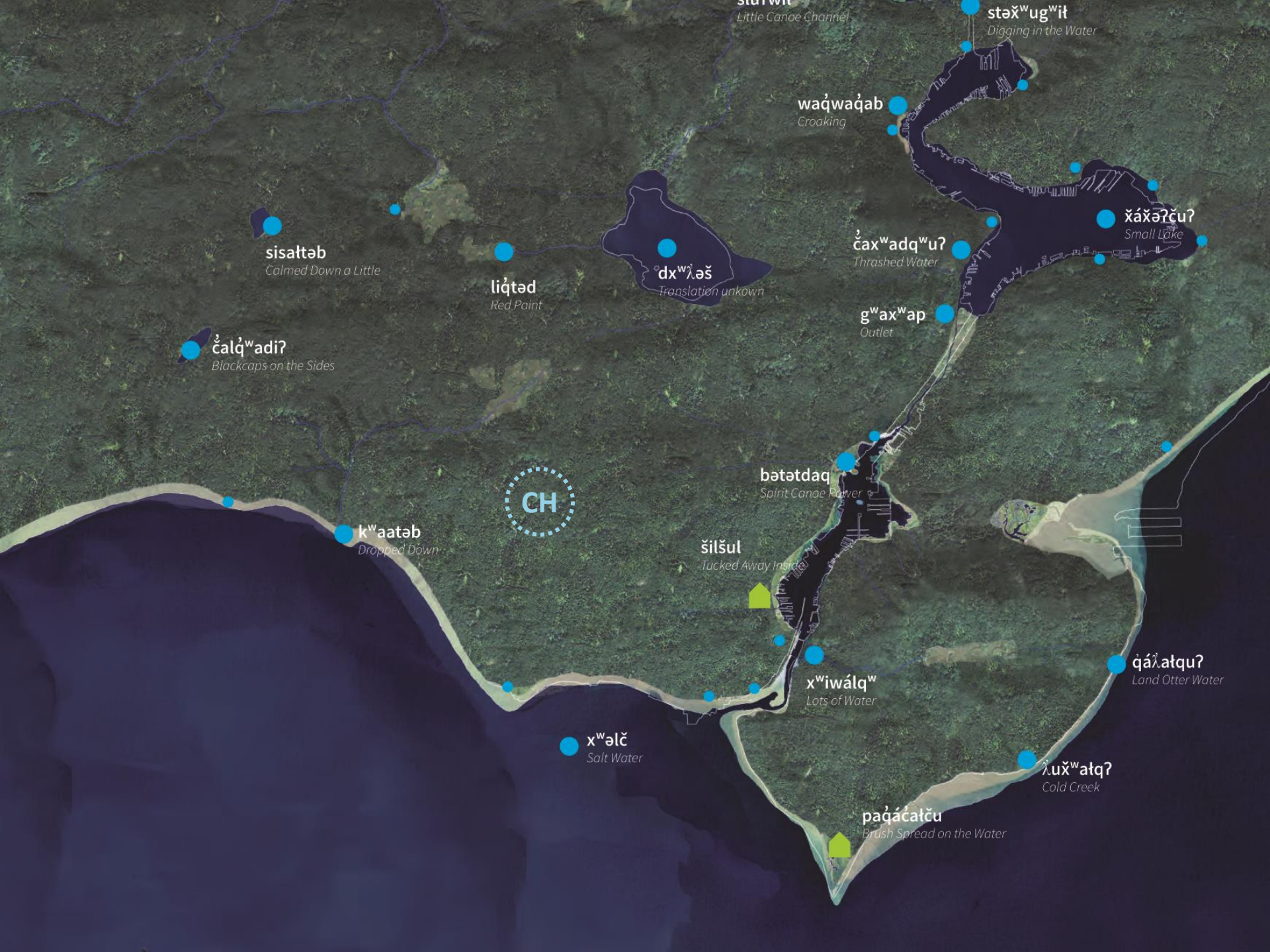
9TH AVE NW

DIBBLE AVE NW

8TH AVE NW

AVE NW

AVE NW



stáwíwí
Little Canoe Channel

stəx̣wugwít
Digging in the Water

waq̣waq̣ab
Croaking

ḡáx̣əṛṣu?
Small Lake

sisaltəb
Calmed Down a Little

liqtəd
Red Paint

dx̣ẉḷəṣ̌
Translation unknown

ḡax̣wadq̣wu?
Thrashed Water

g̣wax̣wap
Outlet

ḡalq̣wadi?
Blackcaps on the Sides

CH

bətətdaq
Spirit Canoe Power

ḳwaaatəb
Dropped Down

šilšul
Tucked Away Inside

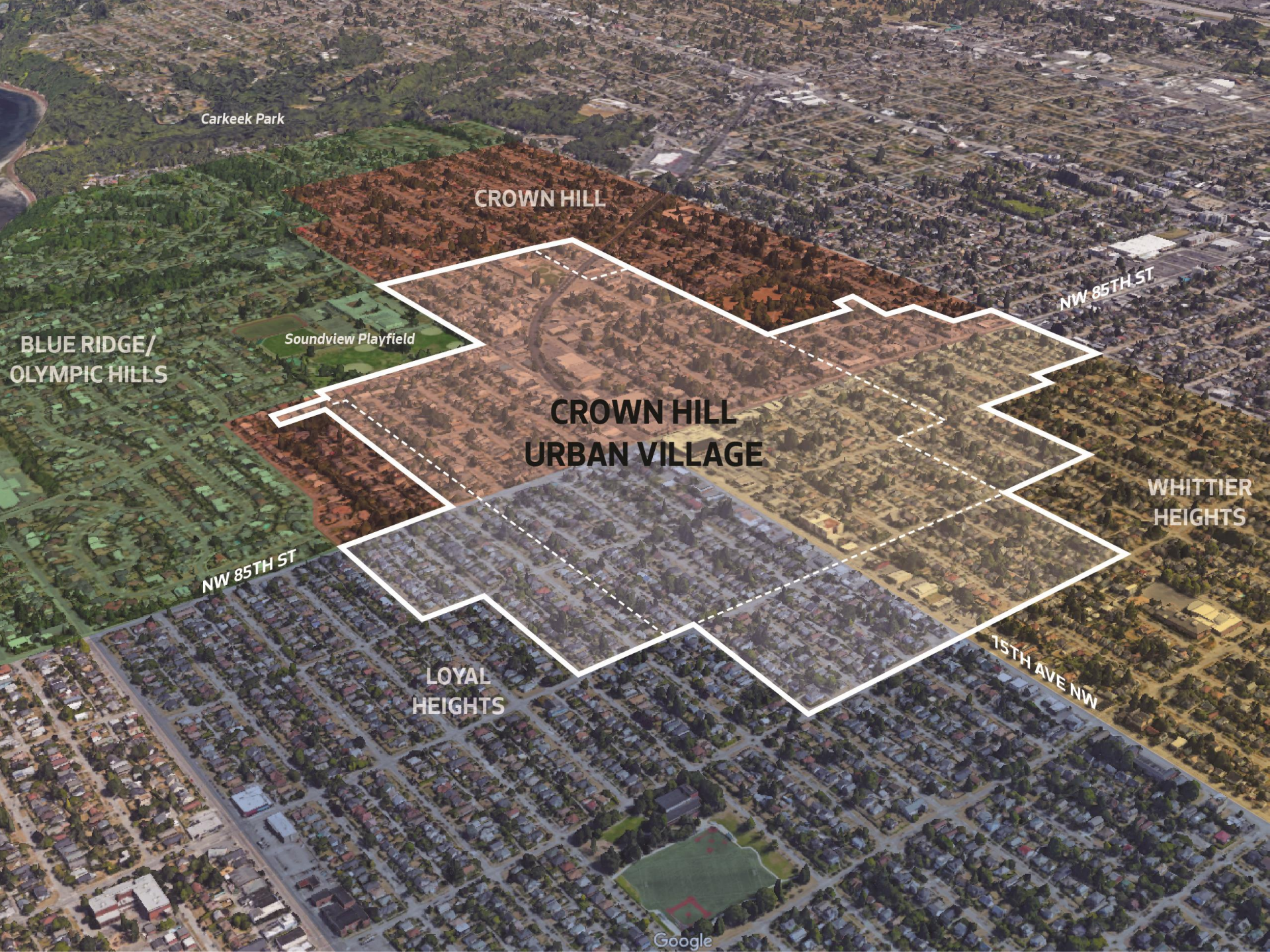
x̣wiwátq̣w
Lots of Water

ḡálatqu?
Land Otter Water

x̣wəlč
Salt Water

luḡwatq̣?
Cold Creek

paḡácatṣu
Brush Spread on the Water



Carkeek Park

CROWN HILL

BLUE RIDGE/
OLYMPIC HILLS

Soundview Playfield

CROWN HILL
URBAN VILLAGE

NW 85TH ST

WHITTIER
HEIGHTS

NW 85TH ST

LOYAL
HEIGHTS

15TH AVE NW

PROCESS & ENGAGEMENT

Soundview Playfield

Crown Hill Glen

Fire Station 35

Holman Grove

Labateyah Youth Home

Crown Hill Cemetery

Baker Park

NW 92ND ST

NW 90TH ST

NW 88TH ST

NW 87TH ST

NW 85TH ST

NW 83RD ST

NW 80TH ST

21ST AVE NW

AVE NW

AVE NW

10TH AVE NW

9TH AVE NW

DIBBLE AVE NW

8TH AVE NW

AVE NW

AVE NW

Community Planning Goals

- Collaborate with community stakeholders to shape the future of Crown Hill
- Identify long-range vision and aspirations
- Explore neighborhood-specific tools and recommendations to enhance livability
- Build on the work already underway by community organizations
- Identify potential coordinated investments with multiple community benefits

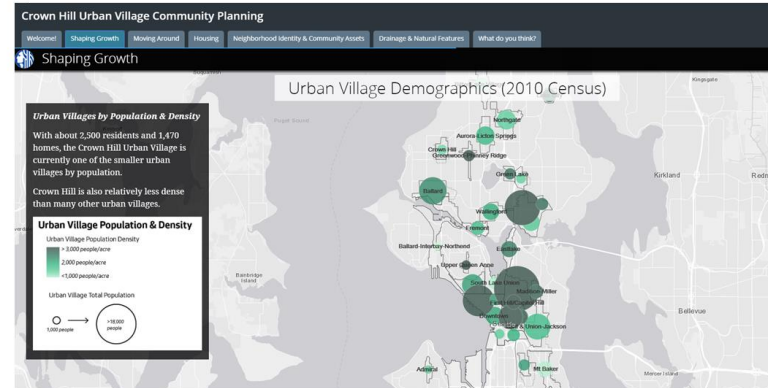
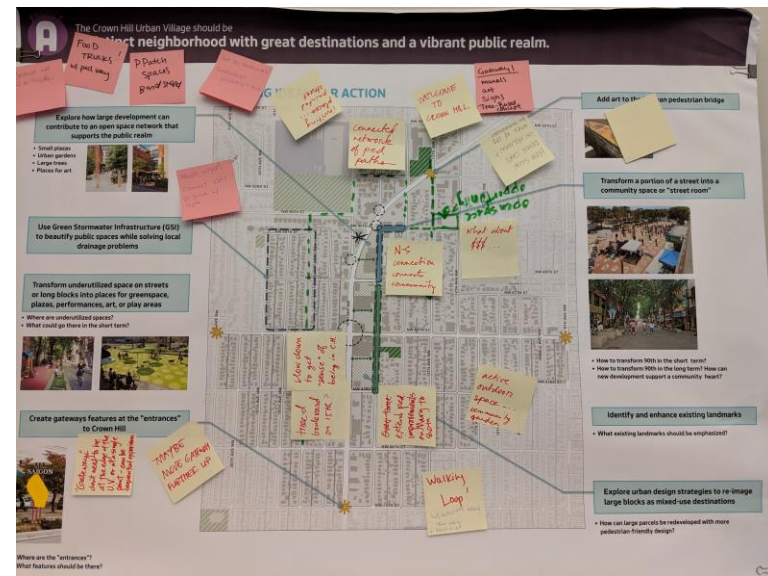
Community Engagement

Outreach conducted in 2019/20:

- 4 community workshops
- Online surveys
- Focus groups
- Phone interviews
- Door-knocking
- Online mapping
- Tabling at events

Total responses:

227



CROWN HILL
URBAN VILLAGE

COMMUNITY PLANNING WORKSHOP SERIES

Seattle Office of Planning & Community Development

WORKSHOP #1

SAT. OCTOBER 13
9:30 - 11:30 AM

CROWN HILL CENTER
9250 14th Ave NW

DROP IN ANY TIME!

DRAFT ACTION PLAN

Soundview Playfield

Crown Hill Glen

Fire Station 35

Holman Grove

Labateyah Youth Home

Crown Hill Cemetery

NW 92ND ST

NW 90TH ST

NW 88TH ST

NW 87TH ST

NW 85TH ST

NW 83RD ST

NW 80TH ST

21ST AVE NW

AVE NW

AVE NW

10TH AVE NW

9TH AVE NW

DIBBLE AVE NW

8TH AVE NW

AVE NW

AVE NW

The Plan...

- is a roadmap for how the city and Crown Hill community can collaborate on both community-led and City-led strategies that address community priorities
- identifies opportunities to improve livability through growth, community action, and coordinated investments
- articulates community aspirations in order guide community to take action and lead efforts to shape your neighborhood

Community Priorities

COMMUNITY PRIORITY A

A distinct neighborhood with great destinations and a vibrant public realm

STRATEGY 1 Grow a walkable neighborhood center at NW 90th Street and NW Mary Ave.

STRATEGY 2 Create and enhance places that foster a cohesive neighborhood identity.

STRATEGY 3 Provide inviting open spaces and places for social interaction and public life.

COMMUNITY PRIORITY B

Streets that encourage walking and make it easy to get around

STRATEGY 4 Design and implement projects that enhance pedestrian comfort and connectivity.

STRATEGY 5 Create a more engaging and comfortable walking experience along arterial roads.

STRATEGY 6 Improve the user experience at transit stops and plan for multi-modal hubs.

COMMUNITY PRIORITY B

Connected, engaged, and thriving communities

STRATEGY 7 Encourage small and local business development opportunities.

STRATEGY 8 Increase the tree canopy and green infrastructure.

STRATEGY 9 Provide opportunities for multi-cultural sharing, education, understanding, and celebration.

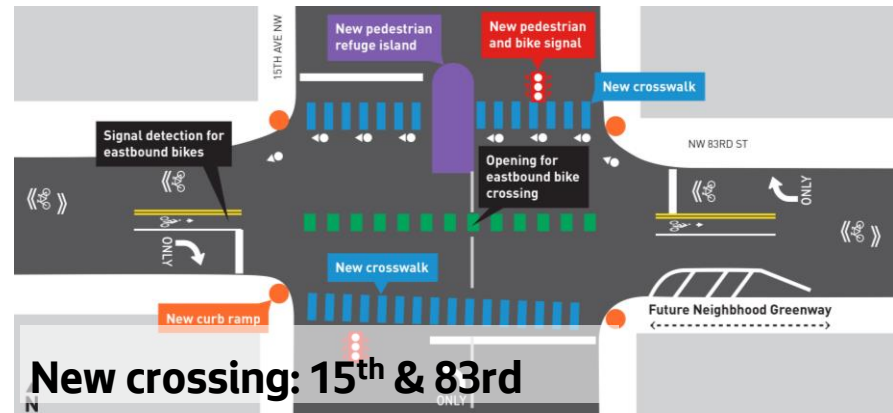
STRATEGY 10 Foster Crown Hill's identity as family-friendly neighborhood.

STRATEGY 11 Integrate art into the public realm.

Example Actions

What's already happening

- Summer Street Festivals (2019)
- Street mural on 90th (2019)
- Curb bulb + planters (2021)
- Community garden in unused ROW (2019)
- Pedestrian designation on Mary & 90th (2019)
- Additional pedestrian crossings
 - New ped/bike crossing at 15th & 83rd (2021/2022)



Example Actions

- Designate portion of Mary Ave or 90th as Festival Street to hold future events
- Continue community events and public art projects
- Spot improvements at 85th & 15th
- Development standards & Design Guidelines that encourage:
 - Pedestrian amenities such as open space and plazas
 - Mid-block pedestrian pathways in new development
 - Reinforcing 'Holman Grove' and pedestrian-oriented business district



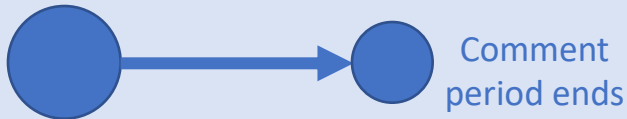
Example Actions

- Implement Greenway and Healthy Street improvements
 - 92nd street Greenway (2019-2020)
 - Pedestrian crossing @ Holman Bridge
- Home Zones & traffic calming interventions
- Design guidelines and/or development standards to support 'Crown Hill Loop'
- Identify streets to pair cost-effective walkways and drainage improvements



Next Steps

NOVEMBER/DEC



Publish Plan &
survey for public
comment

DECEMBER



Update &
finalize Plan

Council
Resolution

Q2 2022+



Continue work
implementing Plan



Thank you

Katy Haima

Urban Designer & Community Planner

**Office of Planning &
Community Development**