

Public Art on Silos & Grain Elevator

Feasibility Study and Request for Community Input



Public Art on Silos & Grain Elevator

Outline

PROJECT INTENT

what is possible? what is desirable?
if possible and desirable, how could it happen?

ABOUT PIER 86

about Pier 86
what are the various views of the facility?
what are the different components?
what are the restrictions and potential of each?

ART POSSIBILITIES

what kinds of art could go on Pier 86?
what are the ramifications of various approaches?
what would be the criteria of desirable art?

NEXT STEPS

public input--concerns and enthusiasm
finish technical questions
mechanisms and funding options

Public Art on Silos & Grain Elevator

Project Goals



- Explore the potential for art that will maximize Pier 86 as a positive defining element of Seattle's Elliott Bay waterfront.
- Develop criteria for an approach to art that is feasible and supported by the community.

Public Art on Silos & Grain Elevator

The Team

Friends of Art on Pier 86

Design Team

Framework

Velocity Made Good

Grid Engineers

Johnson Architecture and Planning

Made possible by the support of the Seattle Department of
Neighborhoods and The Seattle Parks Foundation

Public Art on Silos & Grain Elevator

Feasibility Work To Date

- Outreach: website, flyers, social media, community meetings
- Steering Committee from multiple neighborhoods
- Department of Neighborhoods grant; Seattle Parks Foundation fiscal sponsor
- Facility tour with Port and operator; response to technical questions
- Initial code review
- Meetings with City and Port
- Initial analysis

ABOUT PIER 86

PROPERTY OWNER

Port of Seattle

TERMINAL OPERATOR

Louis Dreyfus Corporation

CONSTRUCTION

Completed 1970

Concrete construction with steel reinforcing;
internal pilasters

SITE

16 acres, paved and fenced.

SILOS

68 Silos, or Bins; 130 high, 28 ft diameter; hold
54,000 bushels each.

OVERWATER TERMINAL

1,400 foot length, with dolphins.

PIER 86 and the CITY



WATERFRONT ICONS



PIER 86 and the CITY: ART



VIEWS OF PIER 86

FROM ELLIOTT BAY



VIEWS OF PIER 86

FROM THE PUBLIC PIER



VIEWS OF PIER 86

FROM QUEEN ANNE HILL



VIEWS OF PIER 86

FROM ELLIOTT AVENUE



VIEWS OF PIER 86

FROM THE PEDESTRIAN BRIDGE



VIEWS OF PIER 86

FROM CENTENNIAL PARK



VIEWS OF PIER 86

NIGHT VIEWS



WHERE COULD ART BE?

WHERE COULD ART BE?

PIER 86 SILOS & GRAIN ELEVATOR LOCATIONS

LOCATIONS

Variables

| | | |
|-----------------|------------|--|
| Bins | Waterside | View from water, ferries, West Seattle. Bins concrete all sides; near view from park |
| | Hill Side | Viewed from Neighborhoods - smallest in scale for Bin location |
| | North Side | Viewed from Neighborhoods, Downtown |
| Conveyor | Landside | Viewed from Neighborhoods, Downtown, narrow linear area Conveyor is steel |
| | Waterside | Mostly viewed from water, ferries, West Seattle, narrow linear area |
| Tower | South | View from water, ferries, West Seattle, Neighborhoods, window locations |
| | Waterside | View from water, ferries, West Seattle, Neighborhoods, window locations |
| | Hill Side | Viewed from Neighborhoods, Downtown, fewer windows than other sides |
| Over water | | Difficult to permit, mostly view from water. Currently has lights |
| Pedestrian Area | | Localized impact, attracts people to grounds |

WHERE COULD ART BE?

BINS - WATERSIDE

View from Elliott Bay, ferries, West Seattle

Close views from Centennial Park

Most visible opportunity

Bins concrete all sides

Lights exist at parapet, some bins

Art could be visible only to water side



WHERE COULD ART BE?

BINS - INLAND SIDE

View from arterial, Queen Anne

Concerns from neighborhood view; driver distraction

Rail lines on inland side

Lighting could be problematic



WHERE COULD ART BE?

BINS - NORTH SIDE

View from bridge and Centennial Park

Less prominent; not seen from water or city



WHERE COULD ART BE?

BINS - CONVEYOR (LAND SIDE)

View from bridge and Centennial Park

Less prominent; not seen from water or city



WHERE COULD ART BE?

BINS - CONVEYOR (WATER SIDE)

View from water and park

Steel structure; rusty

Permitting over water difficult

Installation more disruptive



WHERE COULD ART BE?

TOWER - SOUTH SIDE

View from park

Concrete structure; recent
elevator construction

Needs cleaning



WHERE COULD ART BE?

PEDESTRIAN PATH

Experienced while walking below conveyor

Close up would work for sound or other immediate experience

Could be a spot for interpretation on marine industrial activities

Need to ensure no operational impact



POSSIBLE ART APPROACHES

POSSIBLE ART APPROACHES

APPLIED MATERIALS

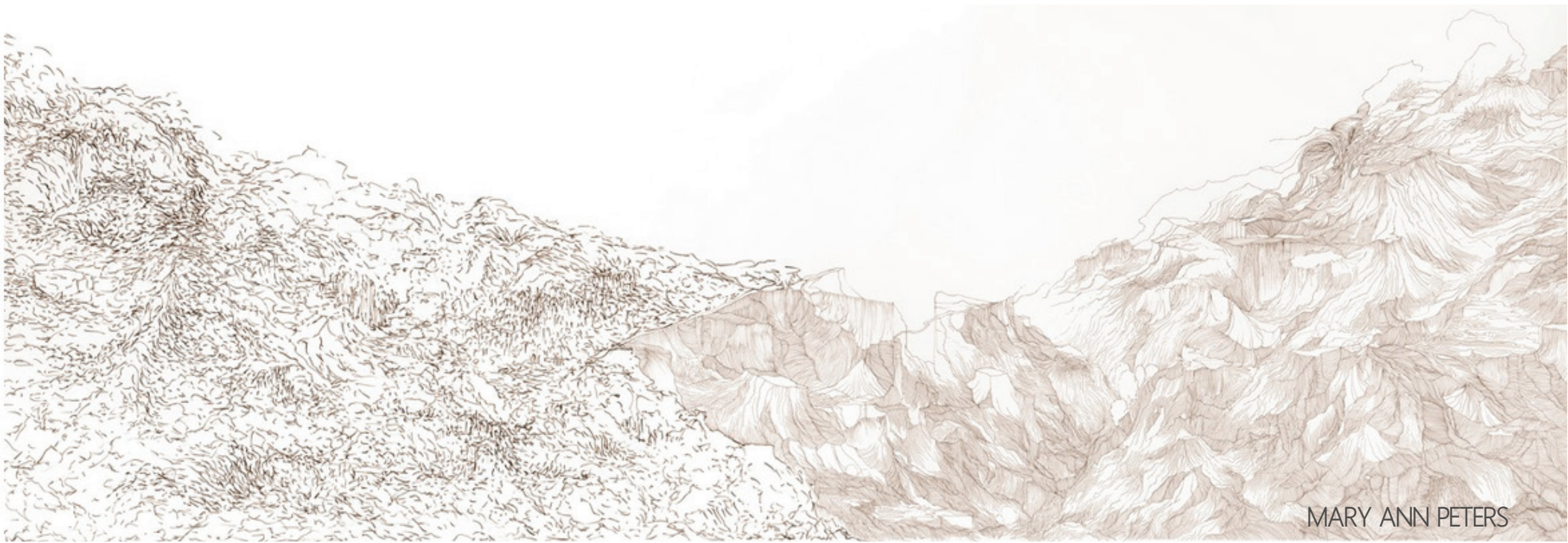
PAINT

CHARACTERISTICS

| | |
|---------------------|---|
| duration | static |
| Install method | swing stage, scaffold or lift |
| maintenance | assume future repaint or touchup |
| commitment | long term |
| security | install only |
| extent | variable |
| cost | variable |
| permitting | might be doable as maintenance |
| community interests | content, extents |
| artistic impact | could use full height of bins for visibility, or be more subtle |



SUBTLE & TEXTURAL



COLORFUL



VANCOUVER



TORONTO



OKLAHOMA CITY

POSSIBLE ART APPROACHES

APPLIED MATERIALS

FILM

CHARACTERISTICS

| | |
|---------------------|---|
| duration | static |
| Install method | swing stage, scaffold or lift |
| maintenance | assume remove or replace in future |
| commitment | long term |
| security | install only |
| extent | variable |
| cost | variable |
| permitting | might be doable as maintenance? |
| community interests | content, extents |
| artistic impact | could use full height of bins for visibility, or be more subtle |



POSSIBLE ART APPROACHES

APPLIED MATERIALS

BANNERS / FLAGS

CHARACTERISTICS

| | |
|---------------------|---|
| duration | static |
| Install method | lift or build attachments |
| maintenance | temporary |
| commitment | temporary |
| security | install and remove only |
| extent | variable |
| cost | variable |
| permitting | minor |
| community interests | content, extents |
| artistic impact | could use full height of bins for visibility, or be more subtle |



BANNERS & FLAGS



LOUISVILLE



OMAHA

POSSIBLE ART APPROACHES

APPLIED MATERIALS

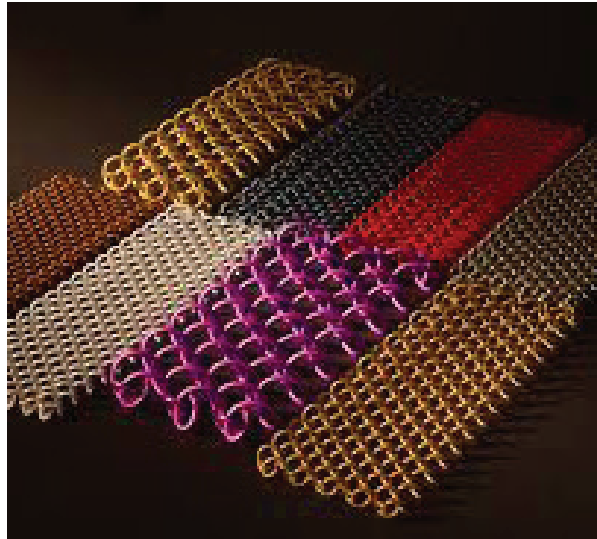
DIGITAL

CHARACTERISTICS

| | |
|---------------------|---|
| duration | dynamic, curating desirable |
| Install method | swing stage, scaffold or lift |
| maintenance | assume remove or replace in future |
| commitment | medium to long term |
| security | install, projection |
| extent | variable |
| cost | variable, but higher than paint or film |
| permitting | might be doable as maintenance? |
| community interests | content, extents |
| artistic impact | could use full height of bins for visibility, or be more subtle |



DIGITAL



LOS ANGELES



SEATTLE

POSSIBLE ART APPROACHES

SOUND

SOUND

CHARACTERISTICS

| | |
|---------------------|---|
| duration | episodic |
| Install method | dependent on project, small scale |
| maintenance | needs power, impact during install |
| commitment | short to long term |
| security | install only |
| extent | localized |
| cost | variable, dependent on tech needed |
| permitting | might not be needed |
| community interests | content curated and changing |
| artistic impact | localized, could attract more people to the space |



POSSIBLE ART APPROACHES

LIGHT

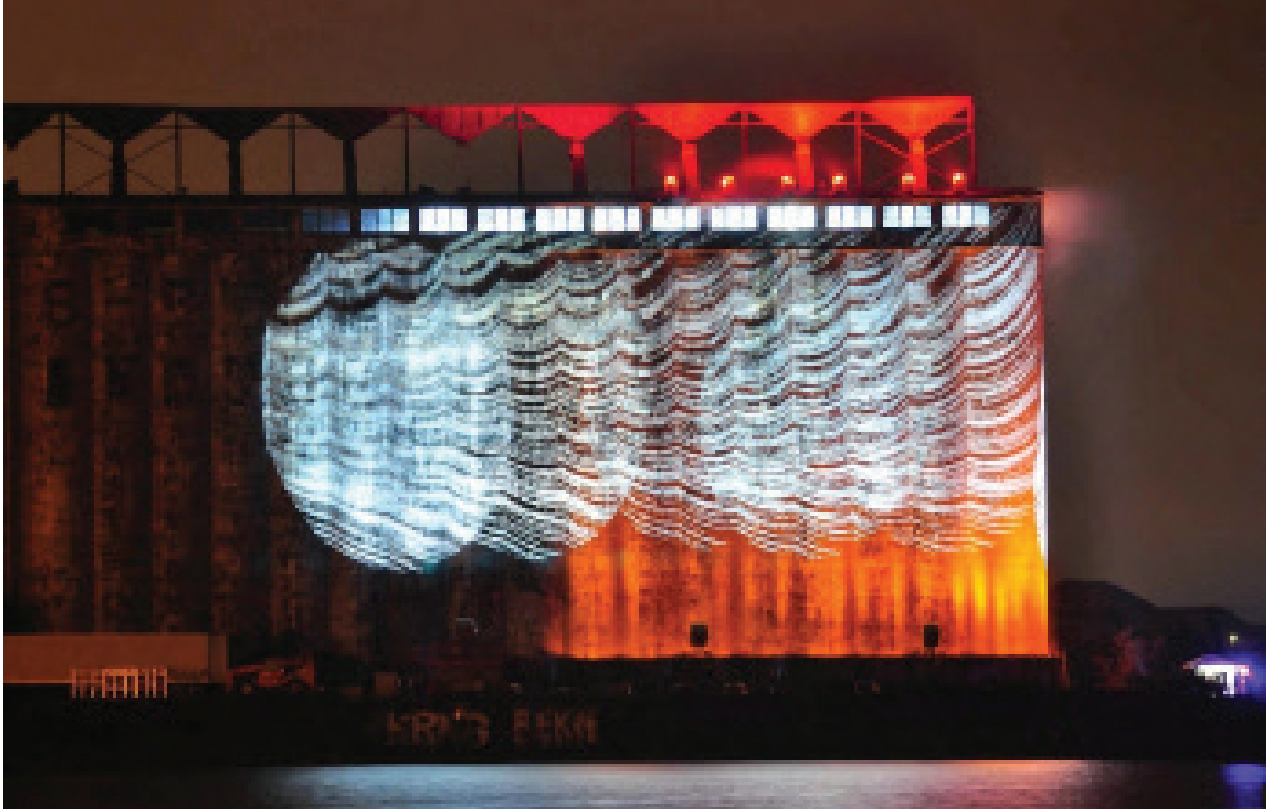
LIGHT

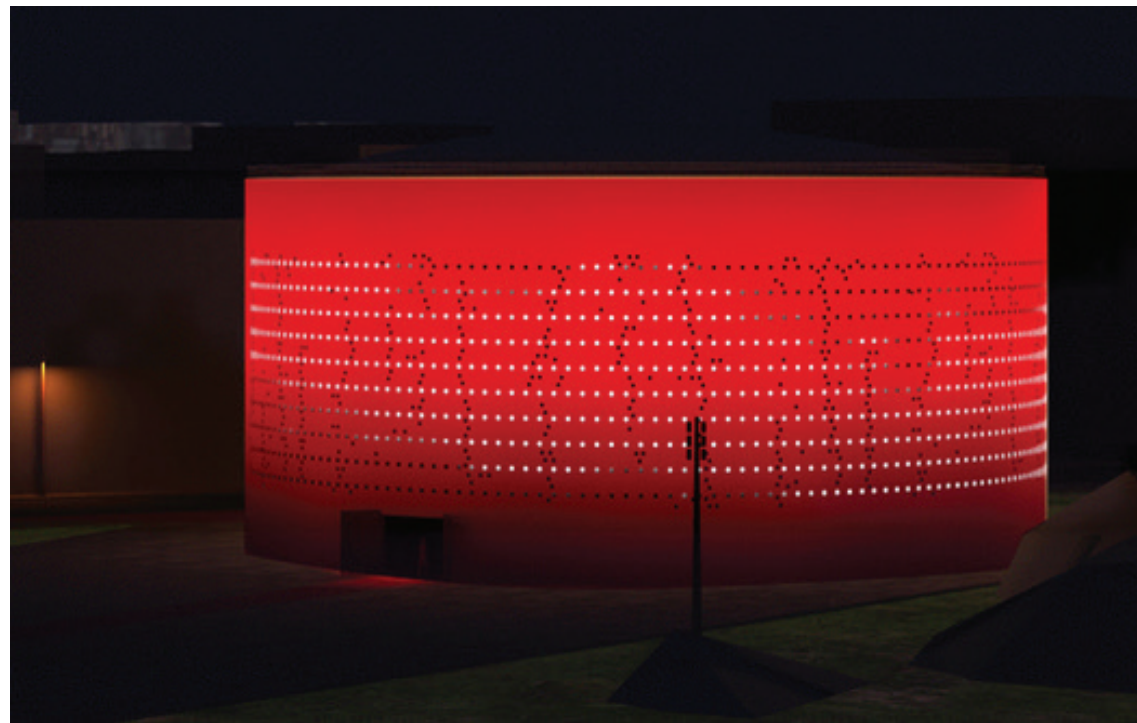
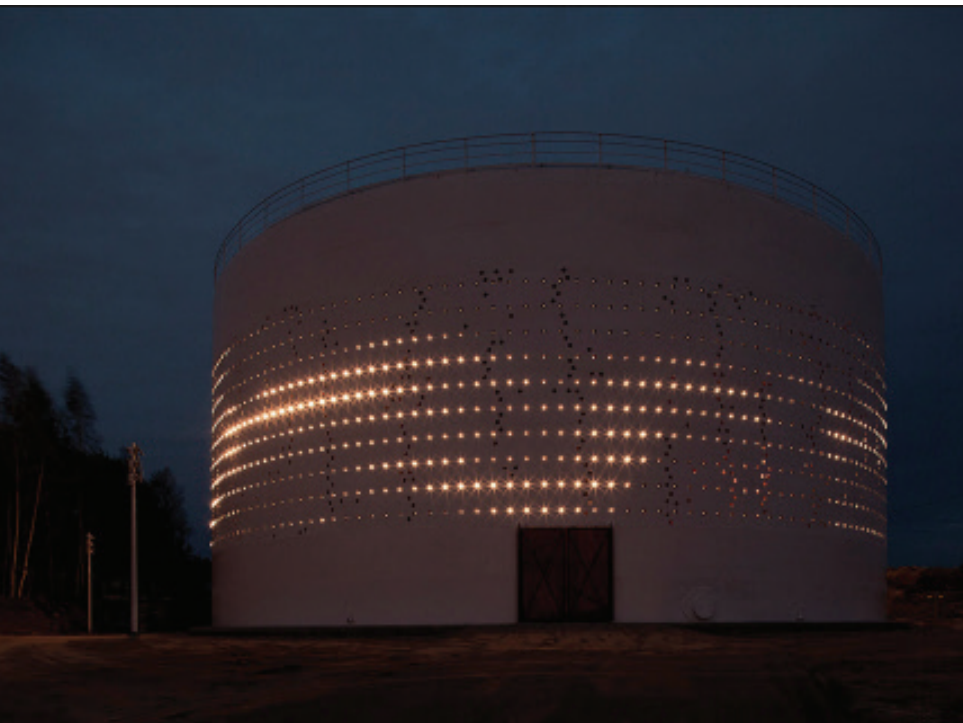
CHARACTERISTICS

| | |
|---------------------|------------------------------------|
| duration | episodic |
| Install method | dependent on project, small scale |
| maintenance | needs power, Ongoing |
| commitment | short to long term |
| security | install only |
| extent | high impact, needs viewer approval |
| cost | variable, dependent on tech needs |
| permitting | might not be needed |
| community interests | content curated and changing |
| artistic impact | night time only |

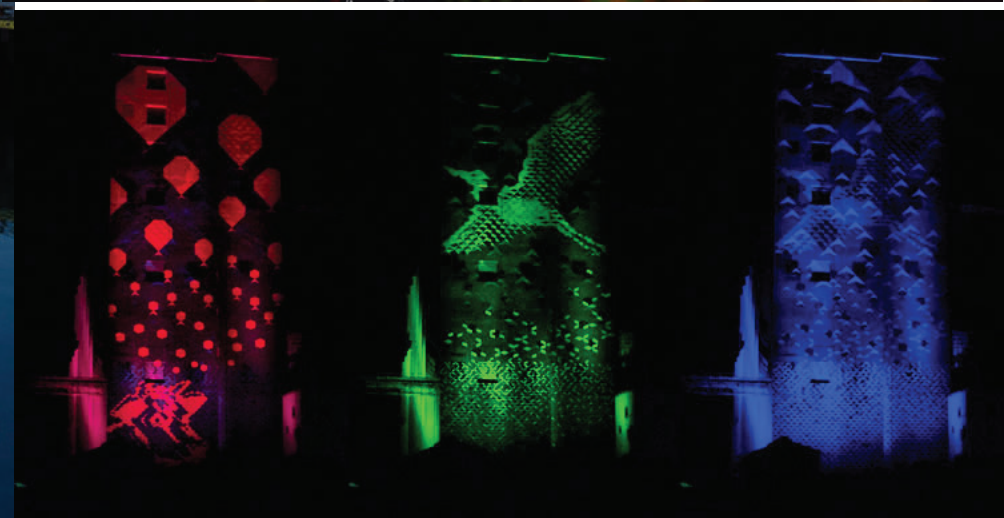


LIGHT





SILO 468 HELSINKI



SAN FRANCISCO

CHANGING DAY TO NIGHT



EDMONTON



CHANGING DAY TO NIGHT

POSSIBLE ART APPROACHES

VEGETATION

VEGETATION

CHARACTERISTICS

| | |
|---------------------|---------------------------------|
| duration | Living material - will grow |
| Install method | scalable, dependent on location |
| maintenance | ongoing, high need |
| commitment | long term |
| security | during install |
| extent | variable |
| cost | variable, depending on location |
| permitting | none, unless structure required |
| community interests | variable on content, extents |
| artistic impact | depended on scale. |



POSSIBLE ART APPROACHES

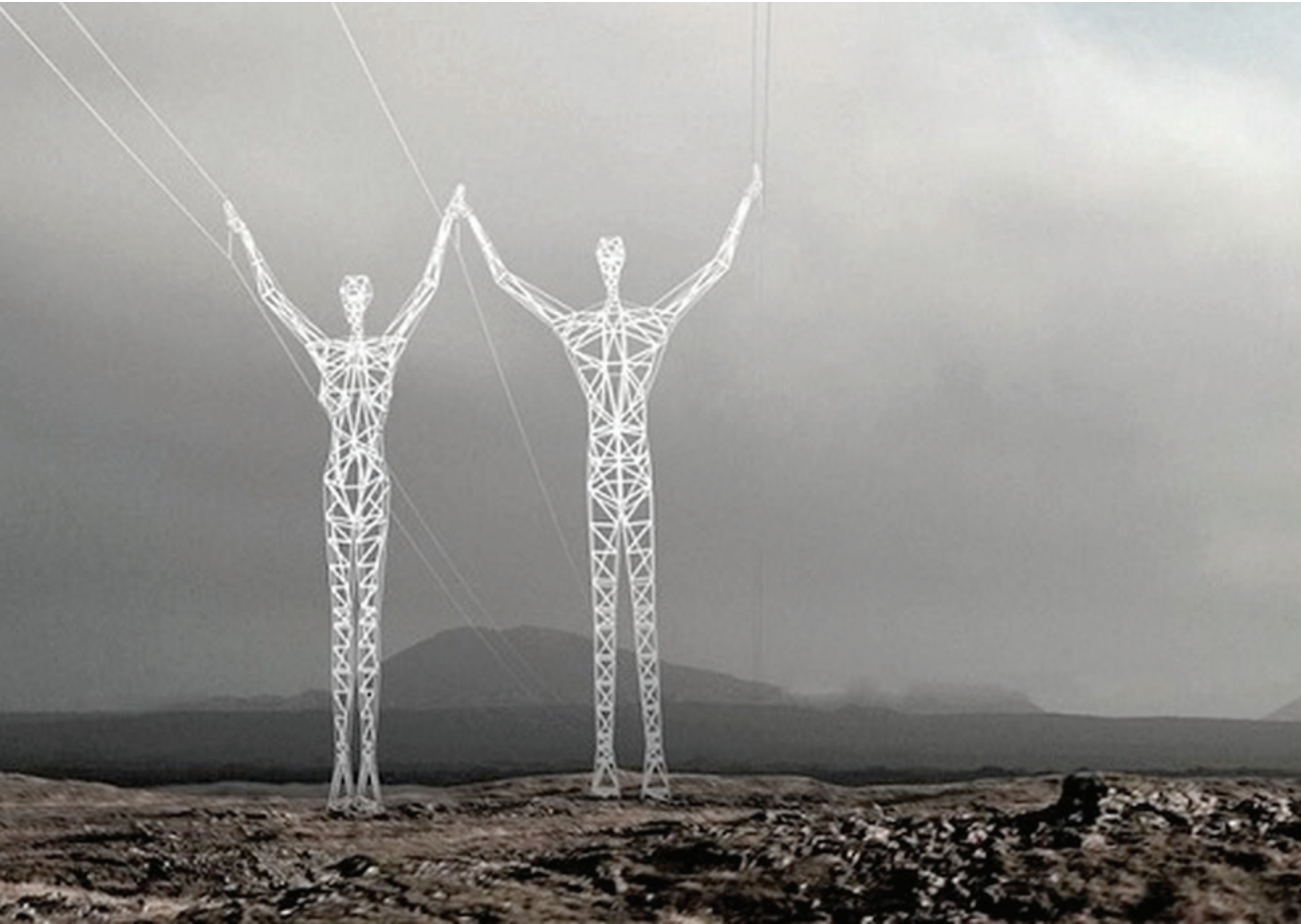
SCULPTURE/APPURTENANCES

SCULPTURE/APPURTENANCES

CHARACTERISTICS

| | |
|---------------------|--|
| duration | Long-term |
| Install method | varies, likely needs structure |
| maintenance | during install, light ongoing |
| commitment | long term |
| security | during install |
| extent | depending on location |
| cost | varies |
| permitting | permit and review required |
| community interests | variable on content |
| artistic impact | dependent on scale scale as artistic expression |

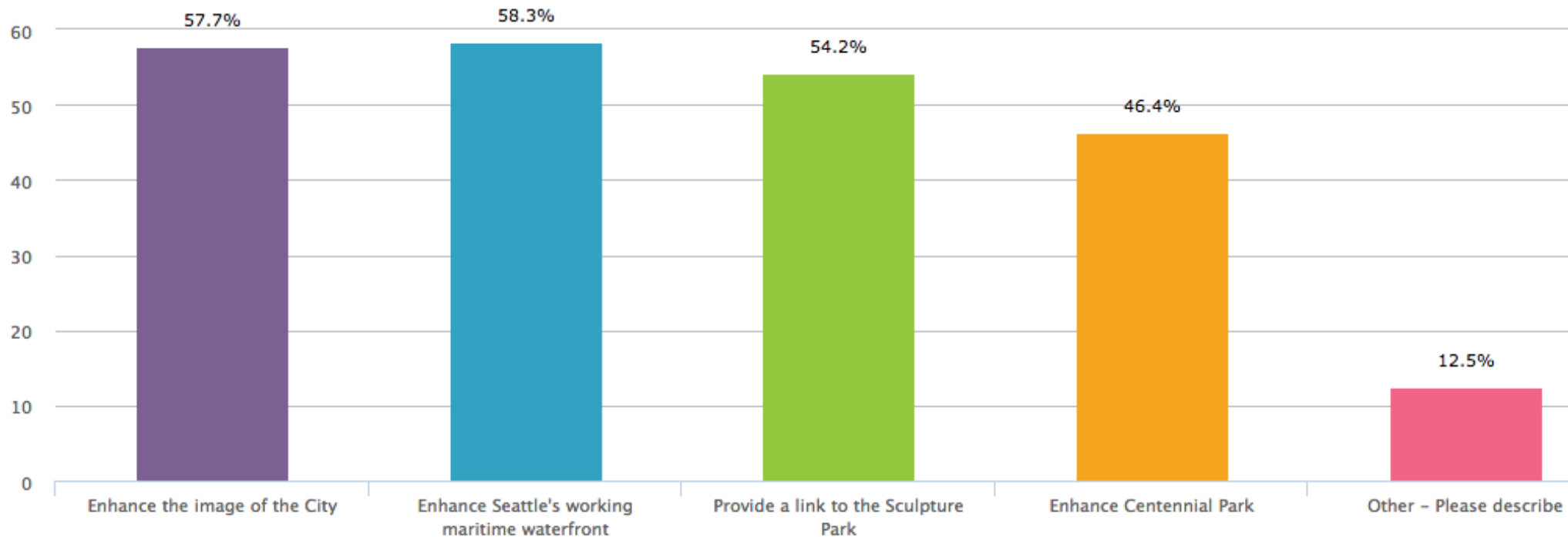




PUBLIC INPUT: SURVEY SNAPSHOT

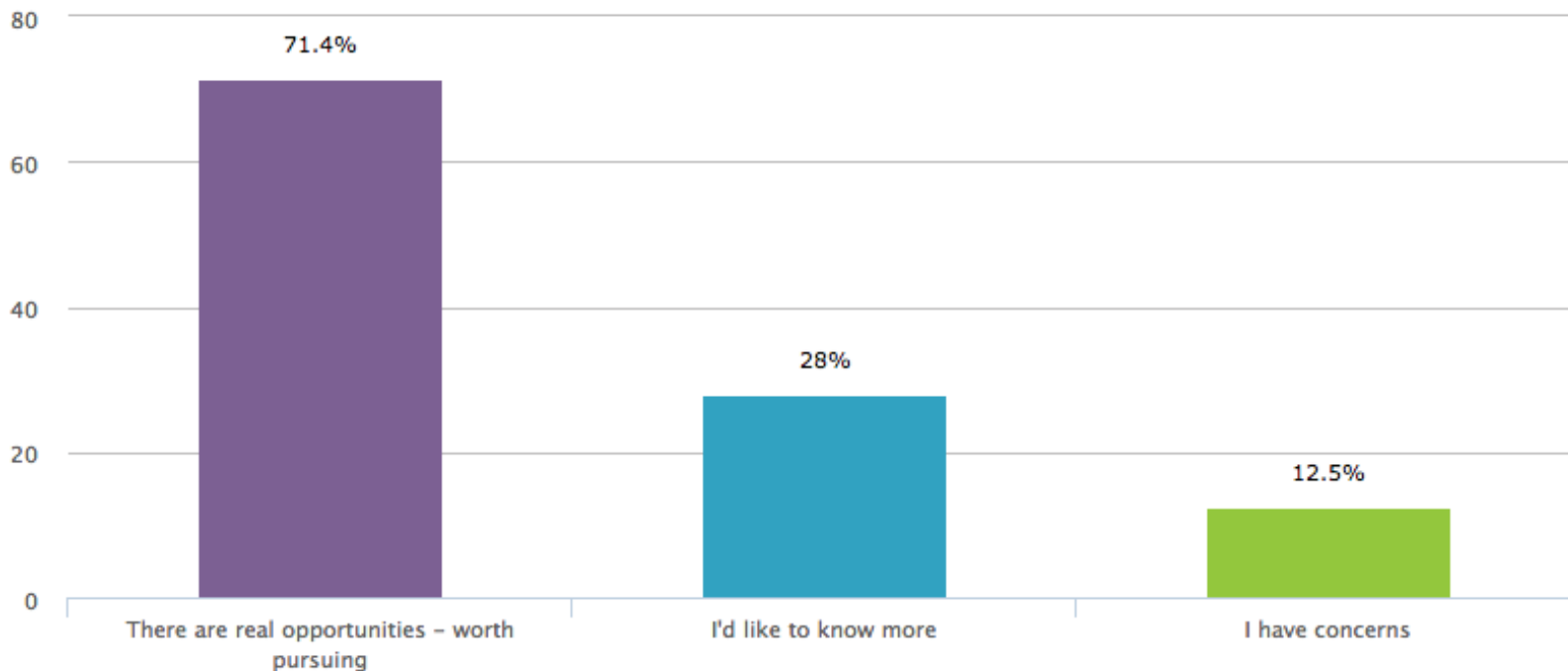
175 surveys

What opportunities do you see with art on Pier 86?



PUBLIC INPUT: SURVEY SNAPSHOT

What do you think about the idea of art on Pier 86?



Public Art on Silos & Grain Elevator

Feasibility Work - NEXT STEPS

- compile public input to date and areas of interest
- refine technical issues
- estimate order of magnitude costs
- review potential funding and organizational options
- continued public input
- final public meeting

BREAK OUT GROUP

Discussion points

What opportunities do you see with art on Pier 86?

What challenges do you see with art on Pier 86?

How could art on Pier 86 strengthen Seattle sense of place?

How could art on Pier 86 contribute to Seattle's working waterfront?

What are your thoughts on temporary short term art versus long term permanent art?

What kind of public art examples come to mind when you think of art on Pier 86?

Online Survey on www.facebook.com/FAP86