



SEATTLE CITY LIGHT  
GLACIER VIEW RANCH ACQUISITION  
FOR SKAGIT WILDLIFE MITIGATION PROGRAM

Tom DeBoer,  
Chief Environmental Officer  
Seattle City Light

# SKAGIT WILDLIFE HABITAT MITIGATION PROGRAM

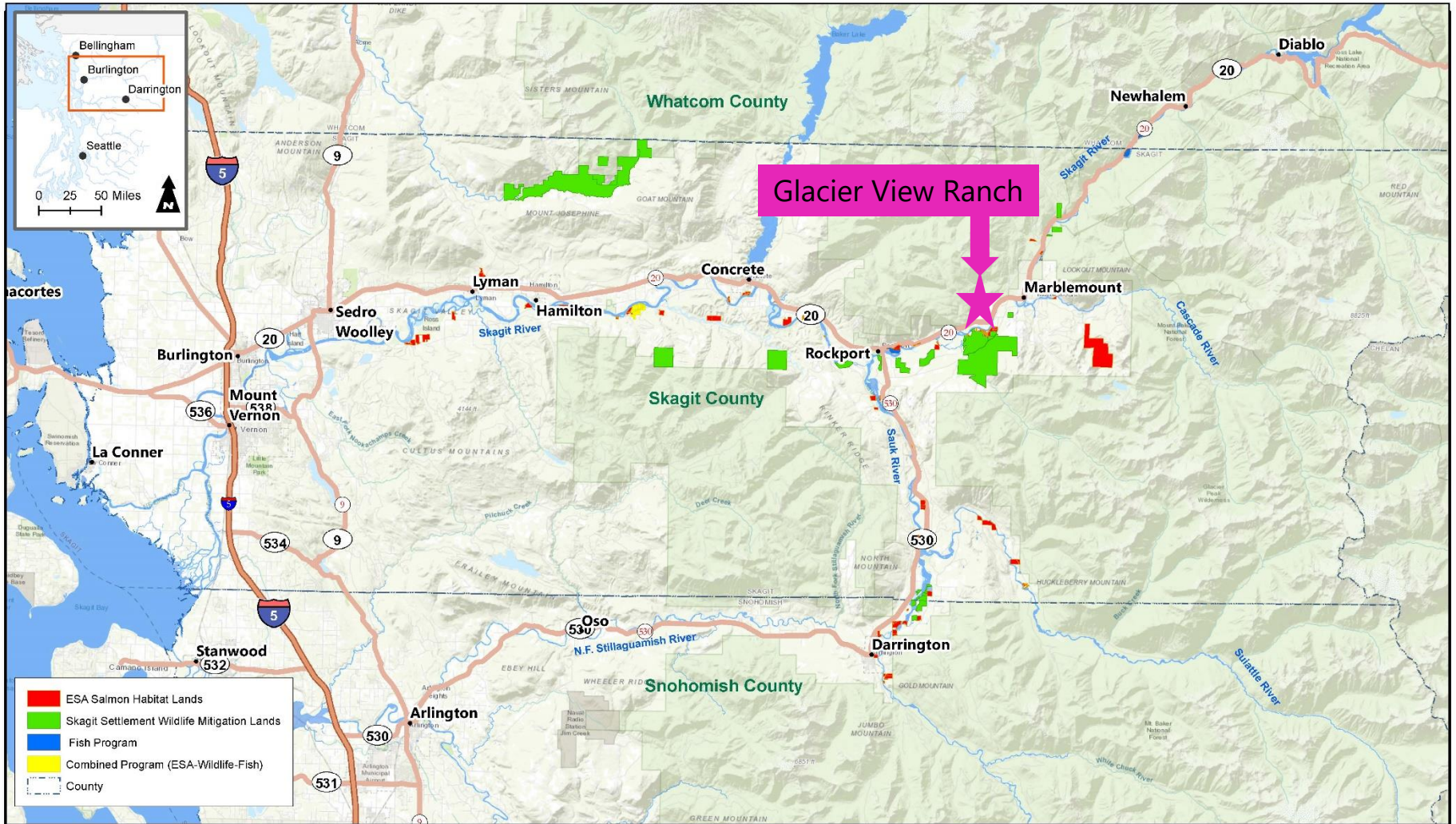
---

- 1995 Skagit Federal Energy Regulatory Commission (FERC) License and 1991 Wildlife Settlement Agreement requires expenditure of \$17 million (1990\$) on wildlife habitat acquisition and management through 2025
- SCL has expended approximately \$16.9 million to date
- Over 10,400 acres purchased, protected, and managed for wildlife

# GLACIER VIEW RANCH DEED ACCEPTANCE ORDINANCE

---

- After 2+ years of negotiation, SCL successfully purchased three Skagit County parcels totaling 140 acres in 2019
- Funded by \$502,580 from Skagit mitigation budget
- Accepting the deed demonstrates The City of Seattle's commitment, through meeting requirements under the FERC license to operate the Skagit River Hydroelectric Project, to preserve fish and wildlife habitat



**Seattle City Light**

**Skagit Wildlife Mitigation Lands  
& ESA Program Lands**

Created 1/25/2019 by Seattle City Light,  
Environment, Land & Licensing Business Unit.  
SCL provides no warranty, expressed or implied,  
as to the accuracy, reliability or completeness of this data.

# GLACIER VIEW RANCH CHARACTERISTICS

- Includes 1,000 ft of salmon-bearing Corkindale Creek
- Composed of forest, riparian, and pasture
- Adjacent to state and federal land improving habitat connectivity
- Adjoins SCL transmission line right-of-way

