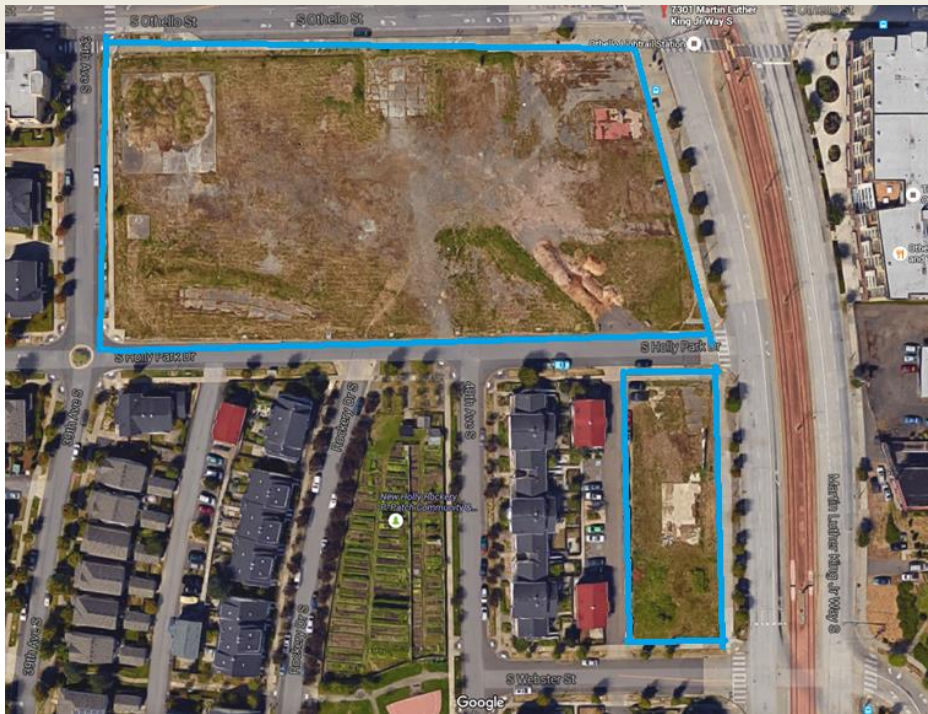


Tony To

HomeSight, *Executive Director*

tony@homesightwa.org | 206.760.4214



South East Seattle Education & Economic Opportunity Center

SW corner of MLK Way and S. Othello- 130,000 SF with 600,000 SF of mixed use zoning capacity at average 7 story height



*Creating Homeowners...
...Building Communities*

www.homesightwa.org



South East Seattle – A Multicultural Community

- 36% Asian/Pacific-Islander
- 26% Black/African-American
- 25% White
- 7% Latino

The Othello neighborhood has welcomed new immigrants for decades and given them access to affordable spaces

- Business district is home to over 150 small, mostly immigrant-owned businesses
- Cultural anchors, community grass roots organizations, equitable development coalitions, places of worship: all firmly rooting the diverse communities



On Board Othello

helloothello.com



Creating Homeowners...
...Building Communities

www.homesightwa.org



SE Economic Opportunity Center

... a culturally competent, relevant, and welcoming place where community members in Southeast Seattle and beyond can access opportunities for higher education, good paying jobs, childcare and health services, affordable rental and ownership housing, and support to start and keep a business.

Core elements of the future Opportunity Center:

- **Postsecondary education connected to job development and early childhood development**
- **Small business assistance and entrepreneurship center**
- **Employment services and connection to career jobs**
- **Affordable commercial space for neighborhood businesses and cultural & community organizations, to stabilize services to the diverse residents of South Seattle**
- **Affordable (60% AMI and above) market rate rental and low income (50% AMI or below) rental to ownership housing**



*Creating Homeowners...
...Building Communities*

www.homesightwa.org



South East Seattle Community's Opportunity

- Maximizes development capacity of Transit Oriented Development Site
- Prevents residential, commercial and cultural displacement
- Embodies community priorities outlined in the 2009 Othello Neighborhood plan
- Creates a shared Multicultural Community Center to stabilize the existing CBOs and be the bridge between the larger community and the services in the SEEOC.

Neighborhood Support

Othello Station Community Action Team, Othello Park Alliance, Othello Neighborhood Alliance, Puget Sound Sage, MLK Business Association, New Holly Neighbors, Rainier Valley Community Development Fund, Rainier Valley Chamber of Commerce, South Communities Organizing for Racial Equity, Rainier Beach Action Coalition, On Board Othello

MCC members

CISC, Eritrean Association of Greater Seattle, Eritrean Association of Seattle and Vicinity, Ethiopian Community Center, Horn of Africa, Somali Community Services of Seattle, Urban Family, Vietnamese Friendship Association



HOMESIGHT

*Creating Homeowners...
...Building Communities*

www.homesightwa.org


NeighborWorks®
CHARTERED MEMBER


EQUAL HOUSING
OPPORTUNITY

SEEOC: Timeline and Funding

January 2016	SE Seattle Community Engagement begins
July 2016	Feasibility Consultants selected
July 2016	Executed Option to Purchase w/ SHA
	Feasibility Plan begins (9 months or April 2017 completion)
August 2016	1 st Large Community meeting held
April 2017	Feasibility Plan Completed & Implementation begins
July 2017	Purchase Agreement w/ SHA finalized
April 2018	Break ground on Phase 1 of SEEOC
Fall 2022	SEEOC Completed

Estimated total Development cost- \$140 million over 6 years with Phase 1 in completed in 3 years

Funding to date \$1.5 million, State of Washington Capital Appropriation
\$1.896 million, City of Seattle General Fund
\$3 million, King County TOD Bond proposed



*Creating Homeowners...
...Building Communities*

www.homesightwa.org

