



*Renewing Yesler's Promise*  
*City Council Briefing*  
*June 1, 2016*



# Renewing Yesler's Promise

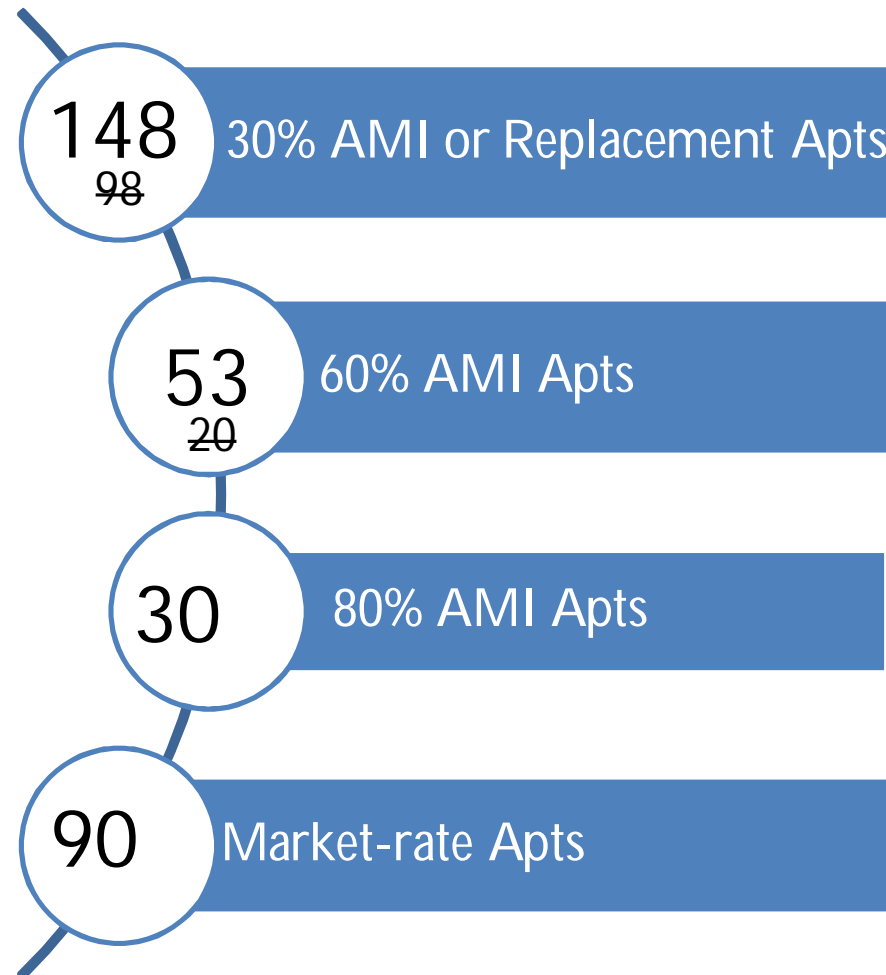
The revitalized Yesler will be a community of opportunity for all. Yesler is becoming a connected, diverse, mixed-income neighborhood that honors the neighborhood's history and cultural richness with safe, healthy and sustainable affordable housing, new parks and open spaces, enhanced health, education and economic opportunities and multi-modal transportation.

# Guiding Principles

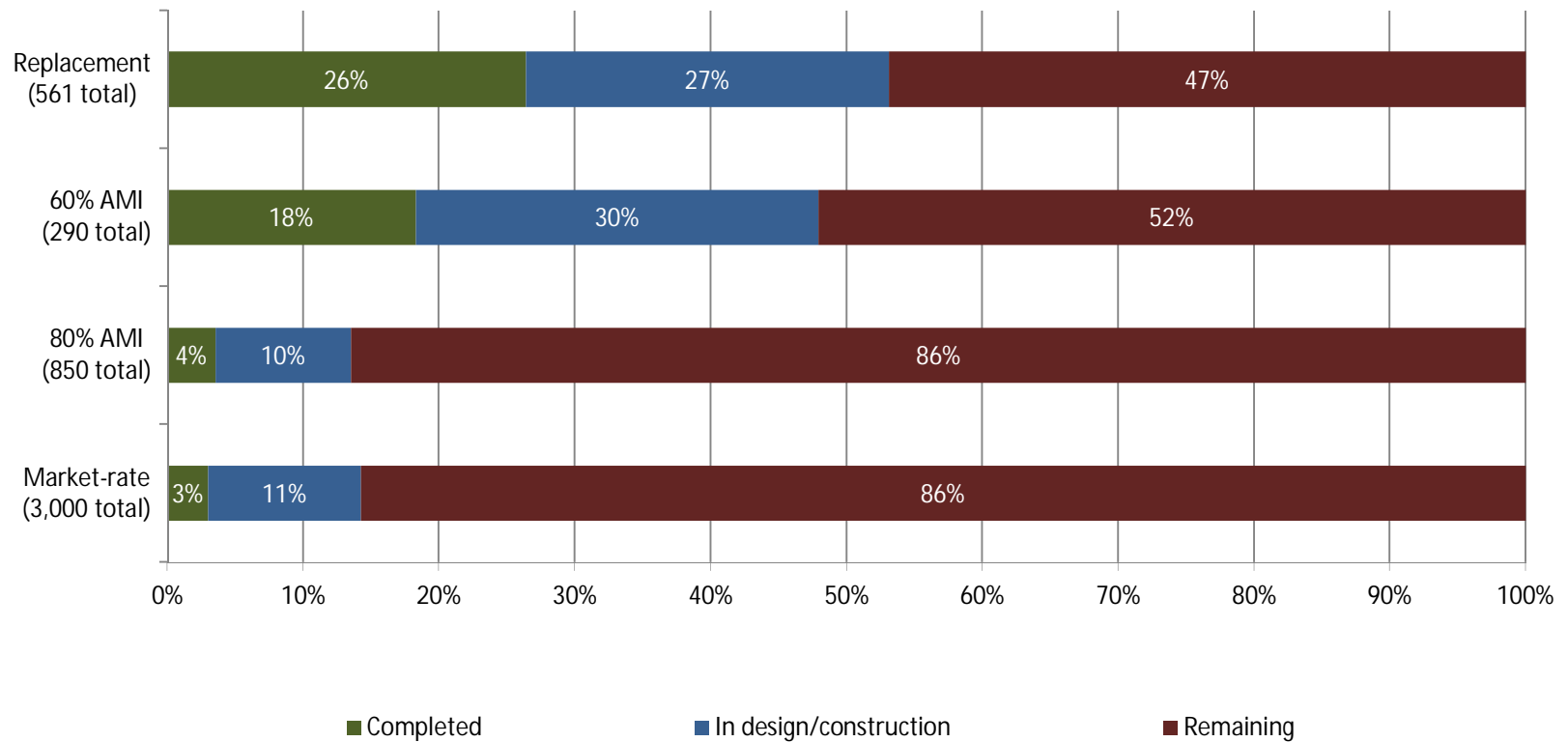
- Social Equity
- Economic Opportunity
- Environmental Stewardship
- One-for-One Replacement Housing



# Housing for All Incomes



# Yesler Housing Progress







06/01/2016





06/01/2016



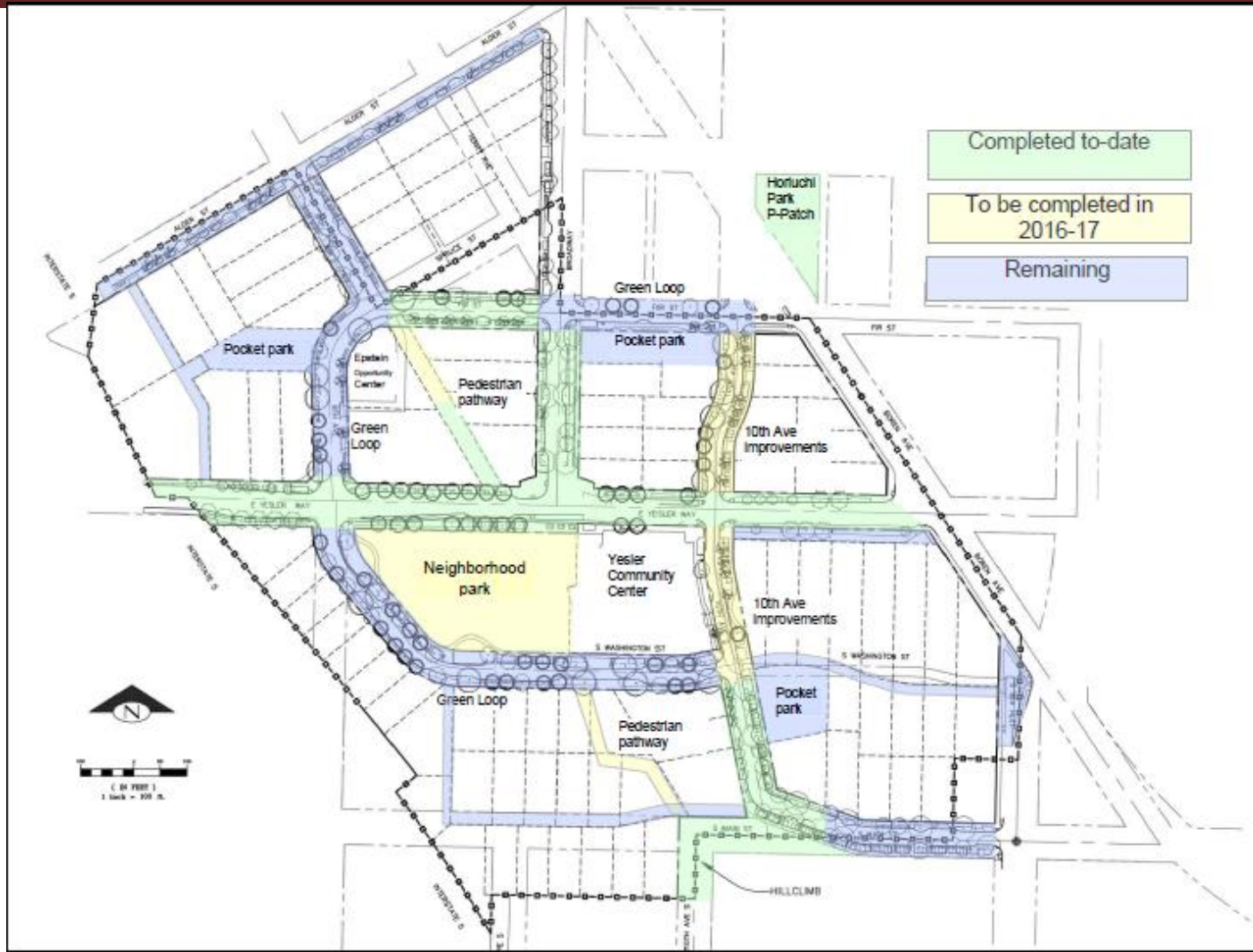
06/01/2016



# A Complete Neighborhood

- 28 New P-Patch plots at Horiuchi Park P-Patch
- ✓ First Hill Streetcar in operation
- 91 new steps built at the 10th Ave S Hillclimb
- ✓ Neighborhood Park designed with features requested by community

# Neighborhood Improvements







06/01/2016





06/01/2016

12

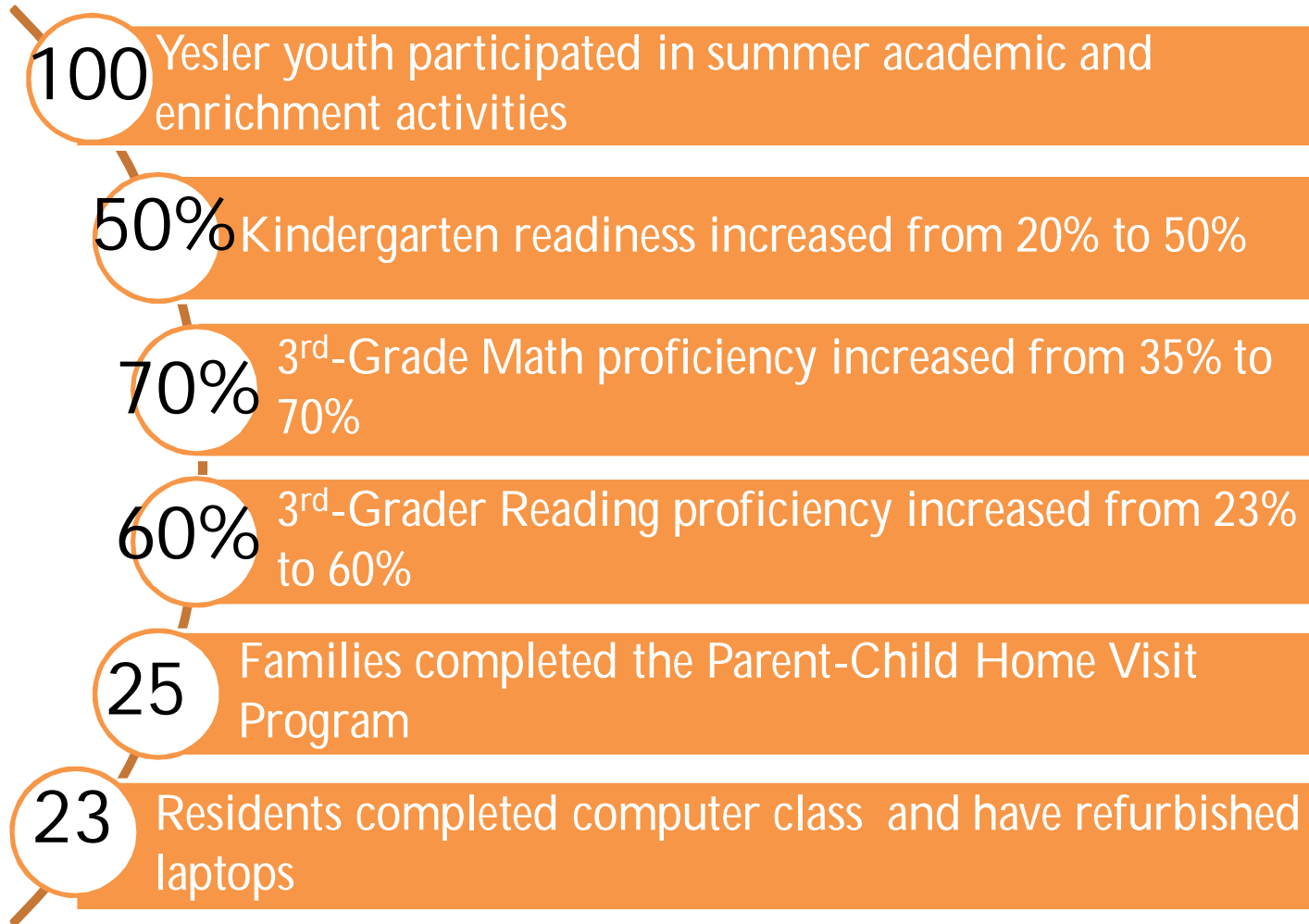




06/01/2016

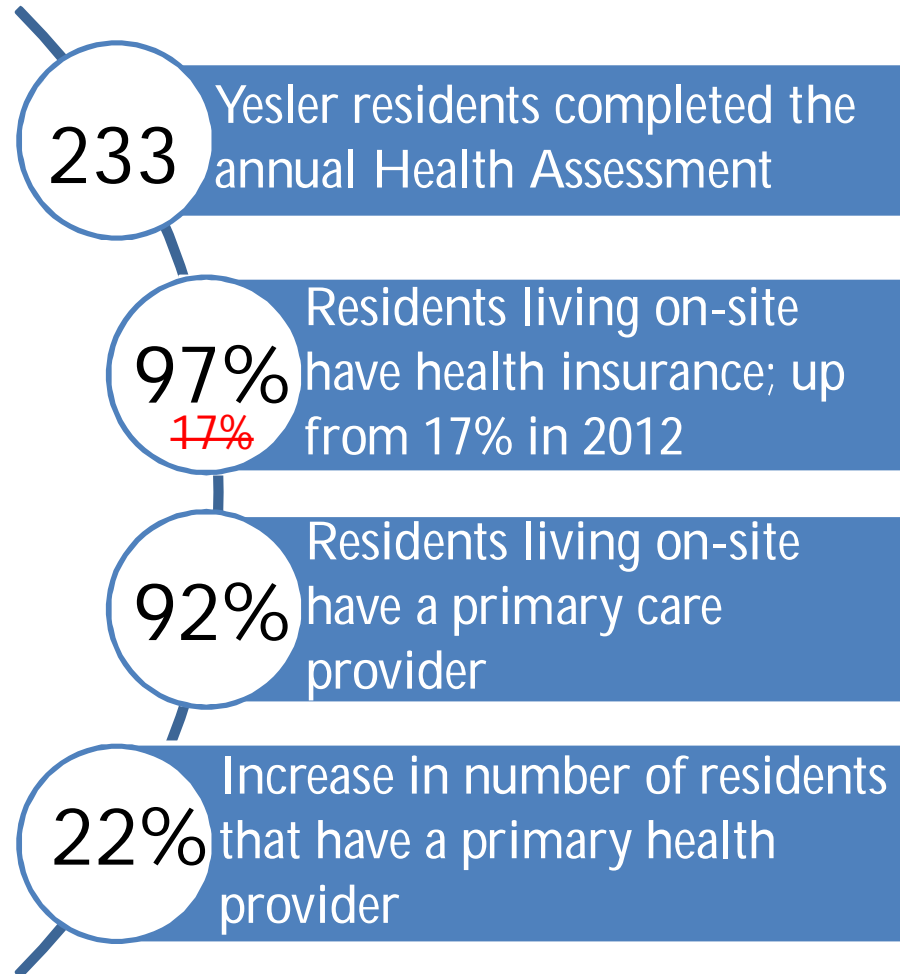
13

# Quality Education for All





# Healthy Outcomes



# Economic Benefits

45

Students participated in the Industrial Sewing class

52

Job placements of Yesler residents

13

Residents completed the ESL/Job Shadowing program

13

Youth participated in paid internship programs, building their professional and personal leadership skills

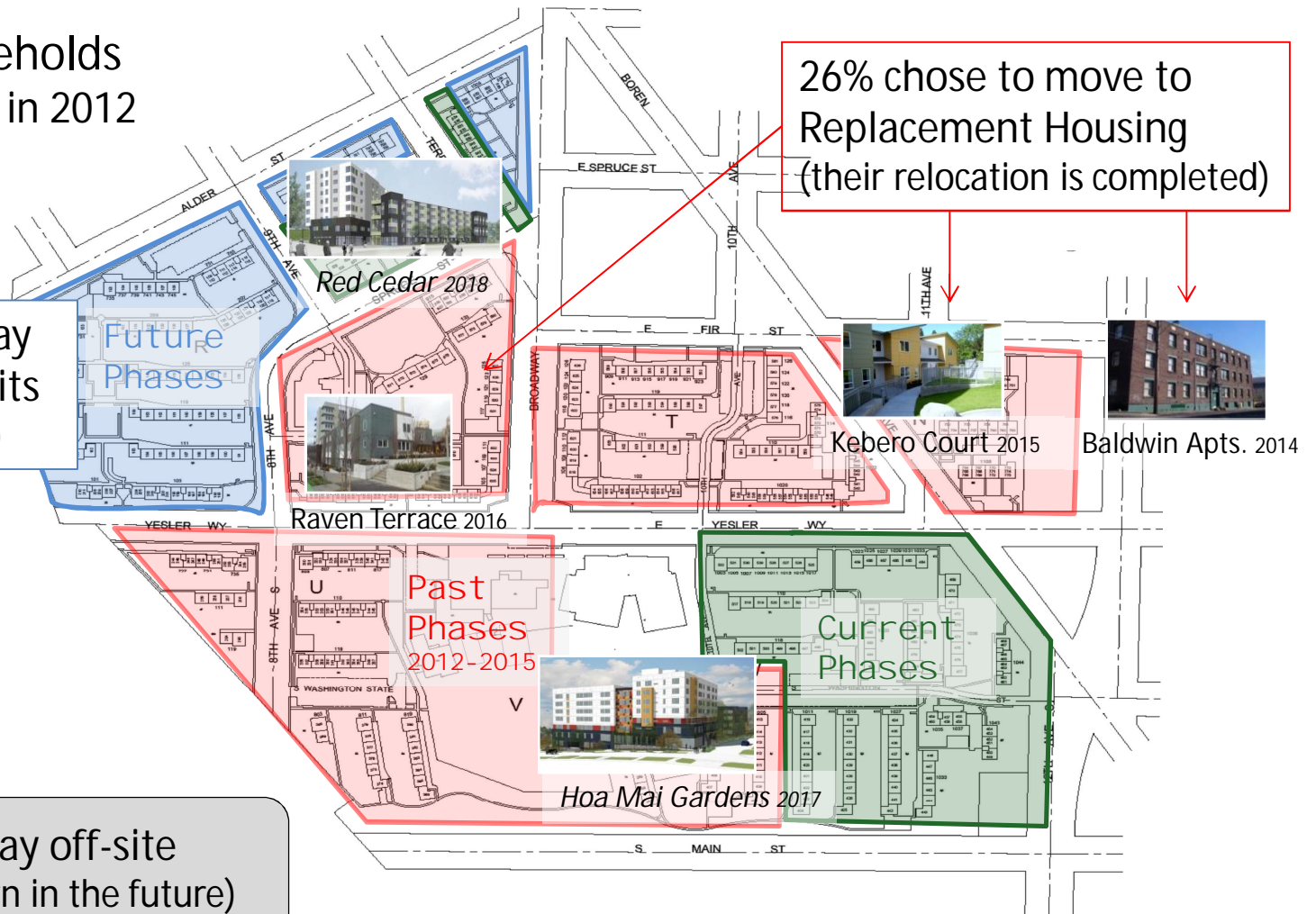
# Relocation Snapshot

493 original households  
when project began in 2012

26% chose to move to  
Replacement Housing  
(their relocation is completed)

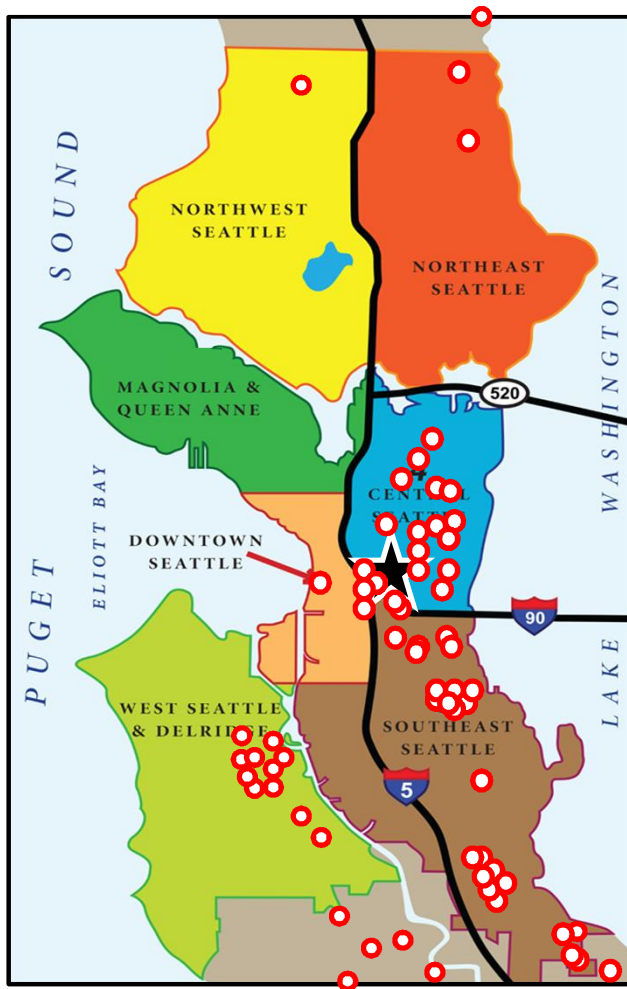
36% preferred to stay  
in original Yesler units  
(will relocate in future)

38% decided to stay off-site  
(may decide to return in the future)





# Relocation Snapshot



38% decided to stay off-site  
(may decide to return in the future)

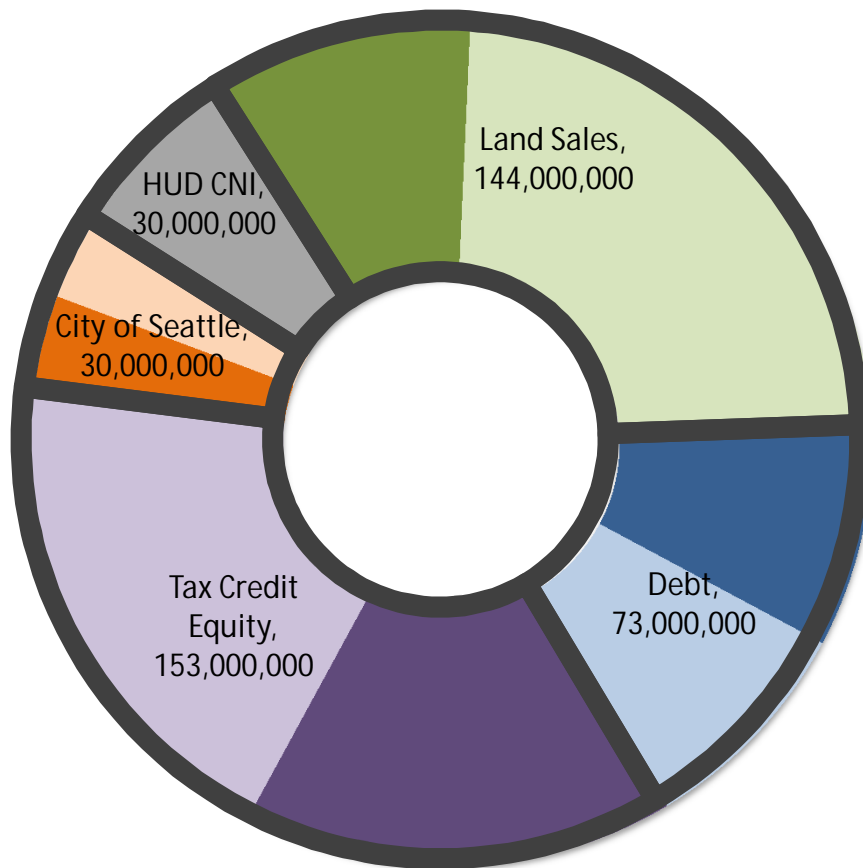
90% moved within Seattle:

- Residents had a choice of units across all SHA properties
- First priority given to families with school children
- Favorite choices for families:  
Rainier Vista, New Holly, High Point,
- Favorite choices for other households:  
International Terrace, Leschi House, Center Park,  
Holly Court, Longfellow Creek

5% moved to King County or nearby

5% moved out-of-state

# Yesler Funding Progress



|                   | Secured | Future | Total |
|-------------------|---------|--------|-------|
| Debt              | \$36    | \$37   | \$73  |
| Tax Credit Equity | \$71    | \$82   | \$153 |
| City of Seattle   | \$16    | \$14   | \$30  |
| HUD CNI           | \$30    | -      | \$30  |
| Land Sales        | \$42    | \$102  | \$144 |
| in millions       | \$195   | \$235  | \$430 |

Darker color = secured funds





06/01/2016

© 3/16/2016 sky-pix.com