

West View



Southwest View: 1st Ave. & Thomas St.





Southwest View: 1st Ave. North & Thomas St.



South View: Warren Ave. & Thomas St.



Southwest View: 2nd Ave. & Thomas St.



East View





Original



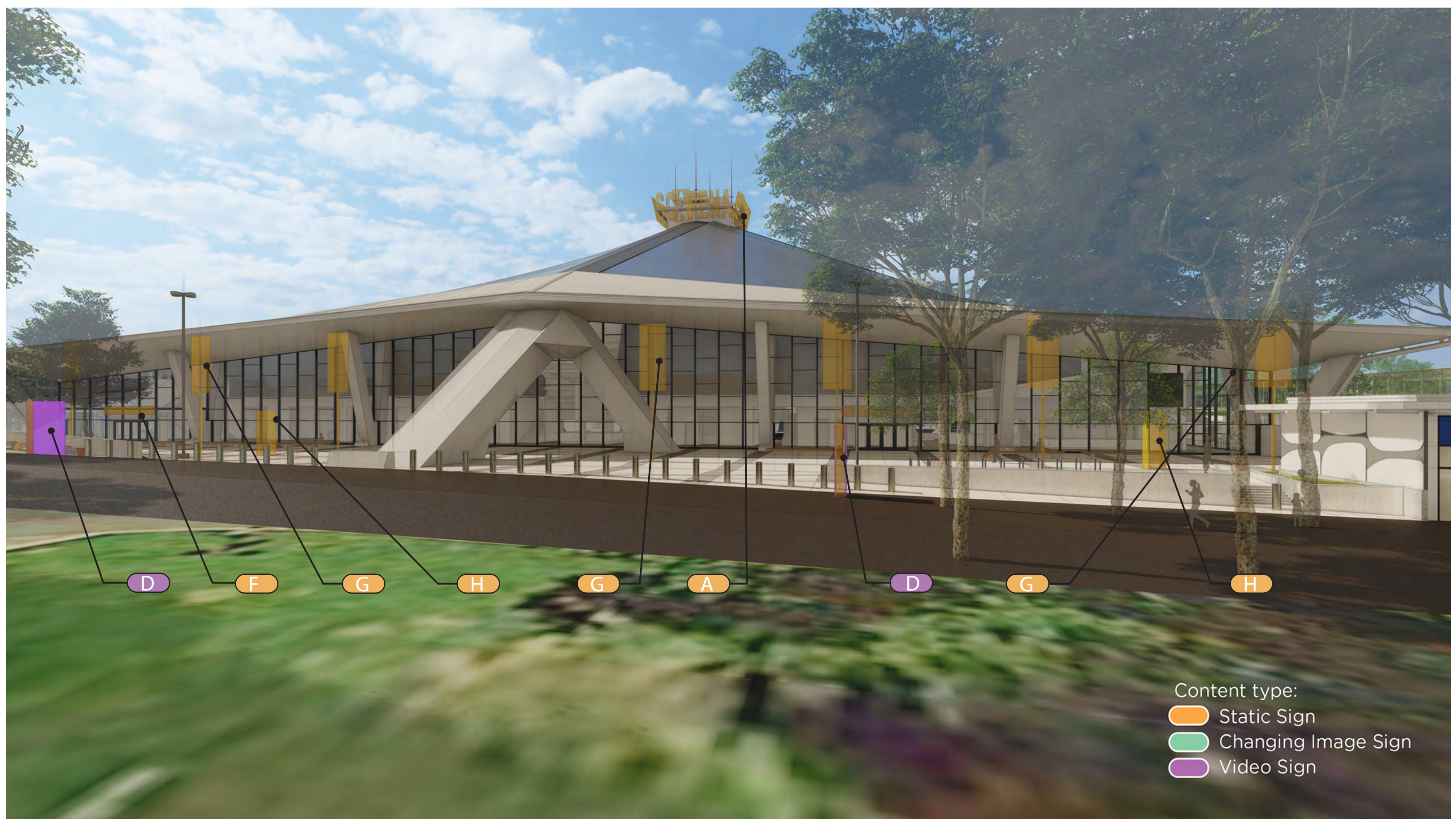
Revised



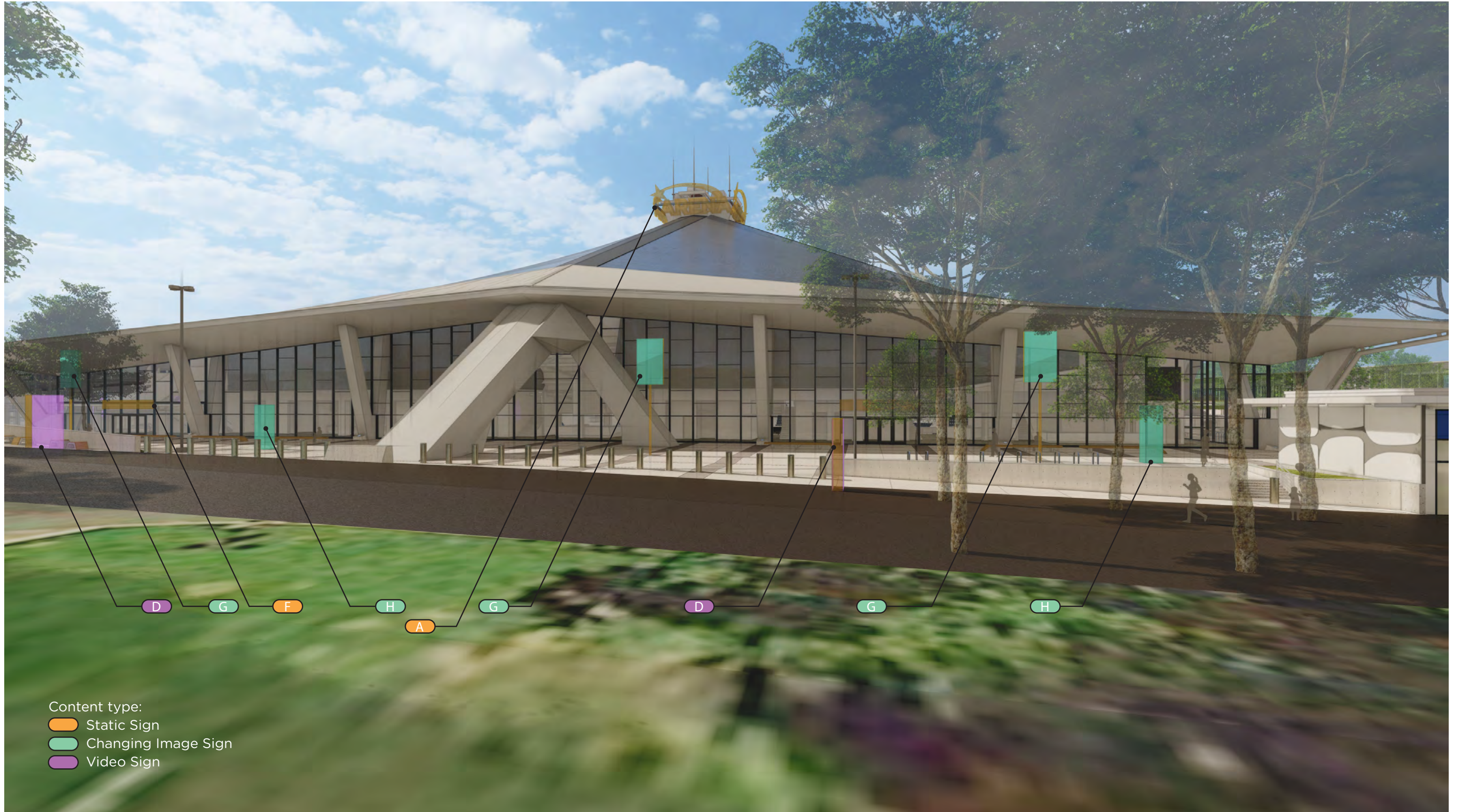
Original



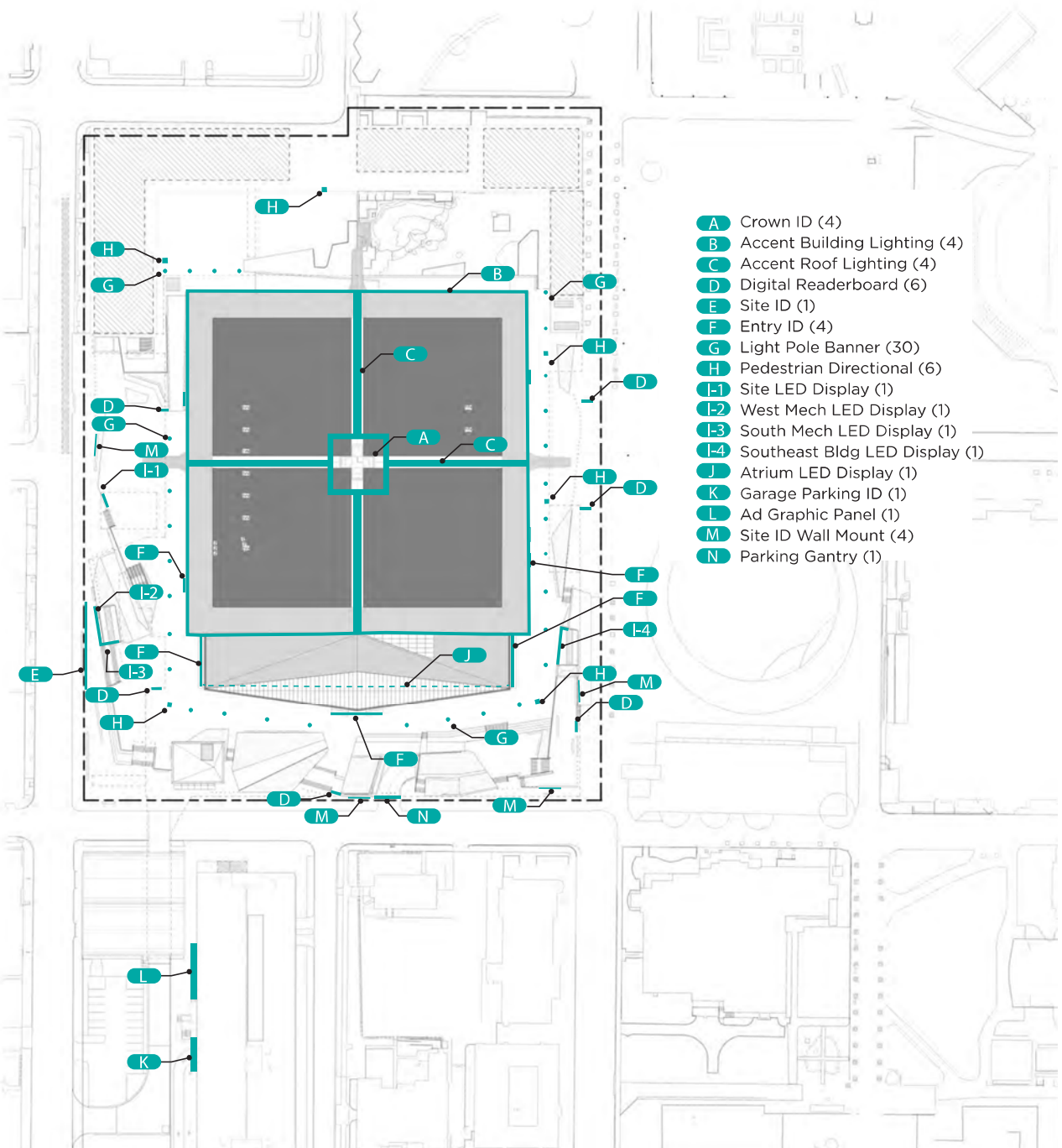
Revised



Original



Revised

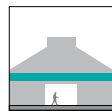


- A** Crown ID (4)
- B** Accent Building Lighting (4)
- C** Accent Roof Lighting (4)
- D** Digital Readerboard (6)
- E** Site ID (1)
- F** Entry ID (4)
- G** Light Pole Banner (30)
- H** Pedestrian Directional (6)
- I-1** Site LED Display (1)
- I-2** West Mech LED Display (1)
- I-3** South Mech LED Display (1)
- I-4** Southeast Bldg LED Display (1)
- J** Atrium LED Display (1)
- K** Garage Parking ID (1)
- L** Ad Graphic Panel (1)
- M** Site ID Wall Mount (4)
- N** Parking Gantry (1)



A
CROWN IDENTITY

Changing-color sponsor sign where the message, background, and accenting may change color.



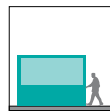
B
ACCENT BUILDING LIGHTING

Changing-color LED uplight and facade wash, where the accenting may change color.



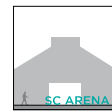
C
ACCENT ROOF LIGHTING

Changing-color LED strip style accent lighting to enhance the roof surface; the accenting may change color.



D
DIGITAL READERBOARD

Dynamic identity marquee sign with integrated illuminated arena name. The message and background, and the color of each, may change, and may include video.



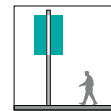
E
SITE IDENTITY

Static illuminated dimensional letters spelling out arena name. The message, background, and color may be illuminated, but may not change.



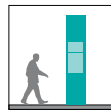
F
ENTRY IDENTITY

Static illuminated signs over entry door/the message, background, and color may be illuminated, but may not change.



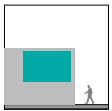
G
LIGHT POLE BANNERS

Static illuminated amenity signs "light the way" to entry points; attachable banners for arena identity and advertising. The message, background, and color may be illuminated, but may not change.



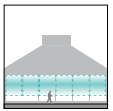
H
PEDESTRIAN DIRECTION

Changing-image wayfinding pylon sign; illuminated, possible inclusion of map for Seattle Center. The message and background, and the color of each, may change.



I
SITE DYNAMIC DISPLAY

Dynamic identity sign with integrated illuminated arena name. The message and background, and the color of each, may change, and may include video.



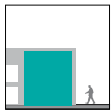
J
DIGITAL ATRIUM SIGNAGE

A currently undetermined dynamic lighting or LED technology that will preserve the transparency of the glass when the technology is not illuminated. The lighting or LED technology will either be placed on or integrated inside the south atrium facade. The message and background, and the color of each, may change, and may include video.



K
GARAGE PARKING IDENTIFICATION

Identification sign on the First Ave. N facade of the parking structure. Internally illuminated channel letter sign mounted directly onto building.



L
ADVERTISING GRAPHIC PANEL

Advertising sign on the First Ave. N facade of the parking structure. Illuminated frame mounted sign mounted directly onto building.



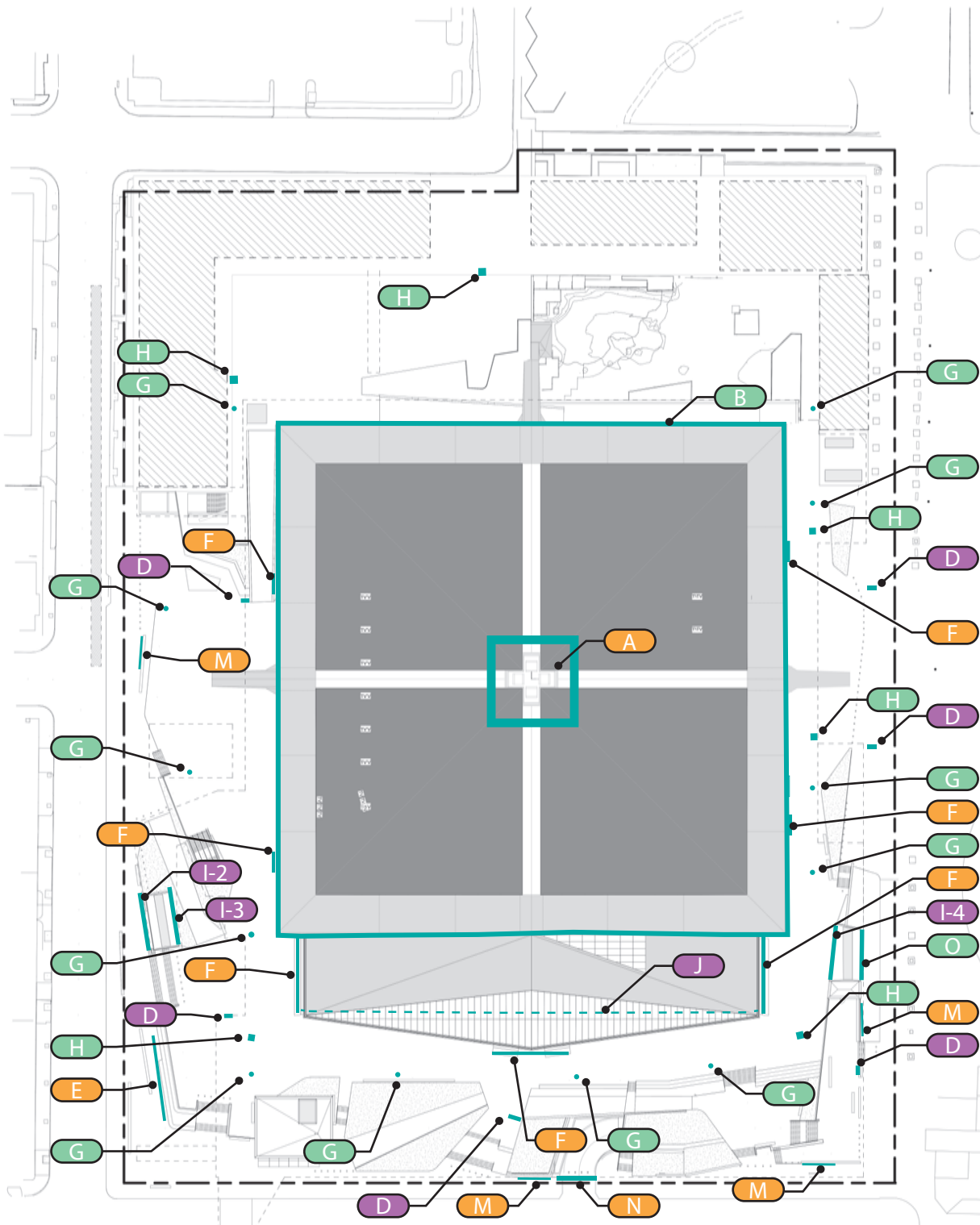
M
SITE IDENTIFICATION WALL MOUNT SIGN

Static illuminated dimensional letters spelling out arena name. The message, background, and color may be illuminated, but may not change.



N
PARKING GANTRY SIGN

Static illuminated overhead sign identifies parking access. The message, background, and color may be illuminated, but may not change.



- A** Crown ID (4)
- B** Accent Building Lighting (1)
- D** Digital Readerboard (6)
- E** Site ID (1)
- F** Entry ID (7)
- G** Light Pole Banner (12)
- H** Pedestrian Directional (6)
- I-2** SW Mech LED Display #1 (1)
- I-3** SW Mech LED Display #2 (1)
- I-4** Southeast Bldg LED Display (1)
- J** Atrium LED Display (1)
- K** Garage Parking ID (1)
- L** Wall Sign - Graphic Panel (1)
- M** Site ID Wall Mount (4)
- N** Parking Ramp ID Sign (1)
- O** LED Display (1)

*Sign Types C and I-1 have been removed

Content type:

- Static Sign
- Changing Image Sign
- Video Sign

<p>L WALL SIGN - GRAPHIC PANEL</p> <p>Wall sign on the building facade. Illuminated frame mounted directly onto building.</p>	<p>A CROWN IDENTITY</p> <p>Changing-color sponsor sign where the message, background, and accenting may change color.</p>	<p>B ACCENT BUILDING LIGHTING</p> <p>Changing-color LED uplight and facade wash, where the accenting may change color.</p>	<p>D DIGITAL READERBOARD</p> <p>Dynamic identity marquee sign with integrated illuminated arena name. The message, background, and color of each may change and may include video.</p>	<p>E SITE IDENTITY</p> <p>Static illuminated dimensional letters spelling out arena name. The message, background, and color may be illuminated, but may not change.</p>	<p>F ENTRY IDENTITY</p> <p>Static illuminated signs over entry doors. The message, background, and color may be illuminated, but may not change.</p>
<p>G LIGHT POLE BANNERS</p> <p>Non-video capable digital display changing-image sign. Each sign is double-sided.</p>	<p>H PEDESTRIAN DIRECTION</p> <p>Changing-image wayfinding pylon sign; illuminated with possible inclusion of map for Seattle Center. The message, background, and color of each may change.</p>	<p>I SITE DYNAMIC DISPLAY</p> <p>Dynamic identity sign with integrated illuminated arena name. The message, background, and color of each may change and may include video.</p>	<p>J DIGITAL ATRIUM SIGNAGE</p> <p>A currently undetermined dynamic lighting or LED technology that will preserve the transparency of the glass when the technology is not illuminated. The lighting or LED technology will be visible through the south atrium facade. The message, background, and color of each may change and may include video.</p>	<p>K GARAGE PARKING IDENTIFICATION</p> <p>Identification sign on the First Ave. N facade of the parking structure. Internally illuminated channel letter sign mounted directly onto building.</p>	<p>O LED DISPLAY</p> <p>Non-video digital display changing-image sign.</p>
<p>M SITE IDENTIFICATION WALL MOUNT SIGN</p> <p>Static illuminated dimensional letters spelling out arena name. The message, background, and color may be illuminated, but may not change.</p>	<p>N PARKING RAMP ID SIGN</p> <p>Static illuminated overhead sign identifies parking access. The message, background, and color may be illuminated, but may not change.</p>				