

An architectural rendering of a modern urban plaza. The scene is set between two multi-story, modern buildings with large windows and balconies. The plaza is paved with a pattern of light and dark grey tiles. In the center, there is a large, dark, three-dimensional 'X' sculpture. People are depicted walking, sitting on benches, and interacting in the space. A dog is also visible. The sky is overcast with a few birds flying. The overall atmosphere is one of a vibrant, public space.

# THE AMP: AIDS MEMORIAL PATHWAY

Using public art and technology to create a place for remembrance and reflection in Seattle about the AIDS epidemic.



The AMP, community driven and collaboratively funded, uses public art to create a physical place for remembrance and reflection; utilize technology to share stories about the epidemic and the diverse community responses to the crisis; and provides a call to action to end HIV/AIDS, stigma, and discrimination.



OFFICE OF ARTS & CULTURE  
SEATTLE



# ARTS Collaboration

- 2017 Site Identified: northern Cal Anderson Park & adjacent TOD site
- 2018 The AMP Master Plan
- 2019 The AMP Boot Camp  
3-art opportunities and artists identified  
Ordinance 126000: MOA between ARTS & The AMP
- 2020 Ordinance 126054\* donation of funds for artworks  
Installation, License & Indemnity Agreement Executed  
Execute Commission Agreements w/ artists
- 2021 Fabrication & Installation of Artworks  
Accept Maintenance Funds  
Dedication

\*amended Ordinance 126000

## The AMP Timeline

2015	The Start
2016	The Community
2017	The Site
2018	The Stories
2019	The Artworks
2020 /2021	The Completion

## The AMP Artworks

- Centerpiece Artwork
- Connecting Artworks
- Cal Anderson Park Artwork

# The AMP Donation of Funds

## Ordinance 126054 (via Seattle Parks Foundation)

### Fabrication & Installation Funds

Centerpiece Artwork	\$240,000
Connecting Artworks	\$176,000
Cal Anderson Artworks	\$340,000
<b>Total</b>	<b>\$756,000</b>

### Maintenance Funds

Centerpiece Artwork	\$180,000
Connecting Artworks	\$160,200
Cal Anderson Artworks	\$120,000
<b>Total</b>	<b>\$400,000</b>

### 2020: Ordinance 126054

- Authorize donation of funds for fabrication and installation of artworks (TOD site and Cal Anderson Park)
- Identified required maintenance funds

### Future Legislation

- Authorize donation of funds for long term maintenance of the artworks (TOD site and Cal Anderson Park)
- Authorize donation of funds for actual project management fees

# The AMP Installation License & Indemnity Agreement

- Agreement allows City to install and maintain artworks on private property
- Artworks included in the City's Municipal Art Collection
- All funding to fabricate, install, and maintain artworks is provided by The AMP (Ordinance 126054)

## Signees:

- Sound Transit (property owner)
- MEPT Capitol Hill Station Joint Venture LLC (leaseholder)
- City of Seattle (licensee)



Harvard Av

Broadway Av

10th Av E

John St

12th Av E



Community Room

Plaza

★ **andimgonnamisseverybody**  
Central Plaza

★ **We're Already Here**  
In the plaza and park (3 locations)

★ **In This Way We Loved One Another**  
Cathy Hillenbrand Community Room,  
Station House Building

★ **Ribbon of Light**  
Cal Anderson Park

Denny Way



Nage Pl

Cal Anderson Park

11th Av E

# We're Already Here

## In the plaza and park (3 locations)

A series of tableaus by Civilization which use protest signs and their accompanying messages to evoke historic moments of public convergence. These artworks lead visitors through the site of The AMP.

[LEARN MORE](#)



Plaza completed March 2021

Cal Anderson Park installation coming May 2021



ACCESS  
=  
EQUALITY

YOU  
ARE NOT  
ALONE

LET  
US  
LIVE

SUPPORT,  
LOVE AND  
UNITY

ACCESS  
EQUALITY

LET  
US  
LIVE

YOU  
ARE NOT  
ALONE

SUPPORT,  
LOVE AND  
UNITY

photo credit Judd Felder





ACCESS  
≡  
EQUALITY

TELL US  
LIVE

YOU  
ARE  
ALONE

HUMAN  
RIGHTS  
FOR ALL  
HUMANS

photo credit Judd Felder

STOP  
THE  
STIGMA

HATE IS  
NOT A  
CURE FOR  
AIDS

WOMEN  
ACT UP

¡EL SIDA  
ES UNA  
CRISIS  
GLOBAL!

STOP  
THE  
STIGMA

HATE IS  
NOT A  
CURE FOR  
AIDS

WOMEN  
ACT UP

¡EL SIDA  
ES UNA  
CRISIS  
GLOBAL!



FIGHTING  
FOR OUR  
LIVES

OUTRAGE  
OUTRAGE  
OUTRAGE  
OUTRAGE

AIDS

TURN  
ANGER  
INTO  
ACTION

LOTTING &  
BIDDING FOR  
OUR OWN

Central Hill Station

E Barbara Bailey Wy

FIGHTING  
FOR OUR  
LIVES

South Entry  
935  
E Sunny Way

photo credit Judd Felder

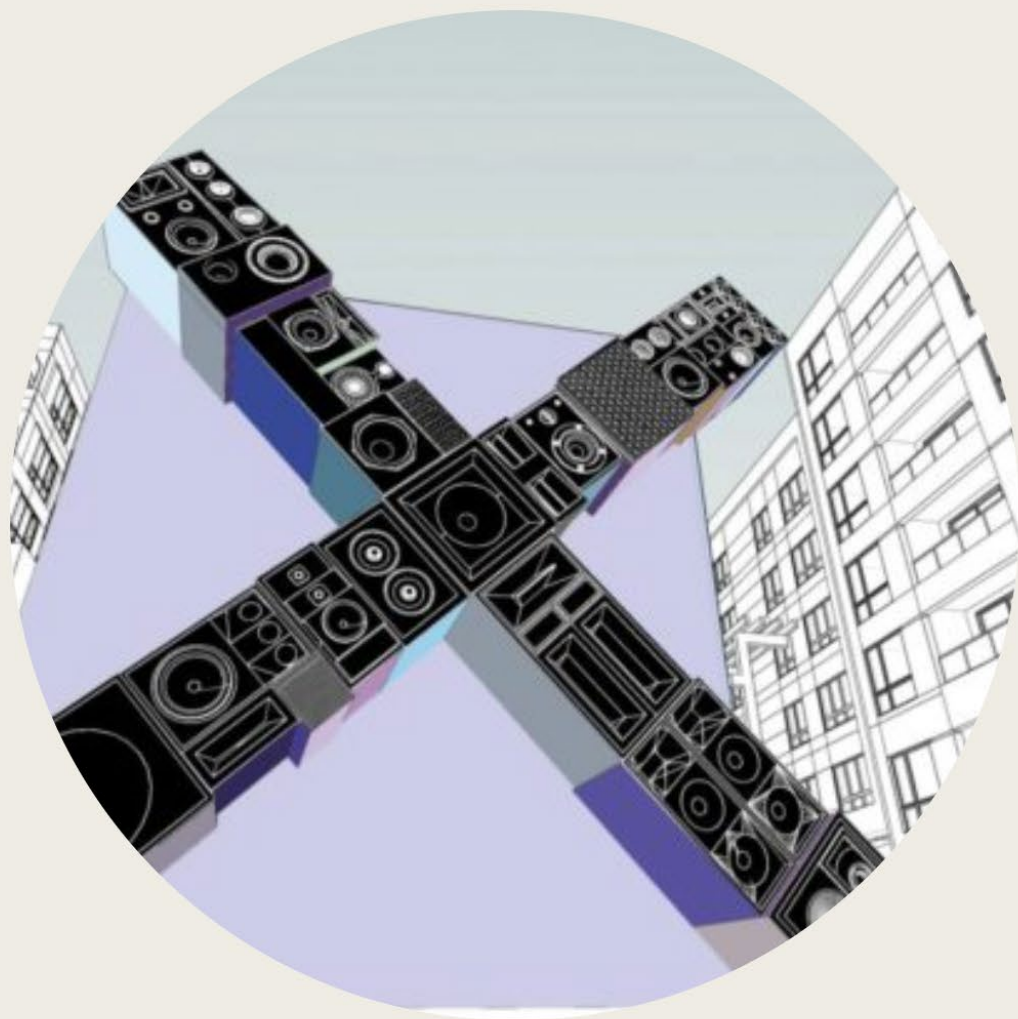


photo credit Judd Felder



photo credit Judd Felder





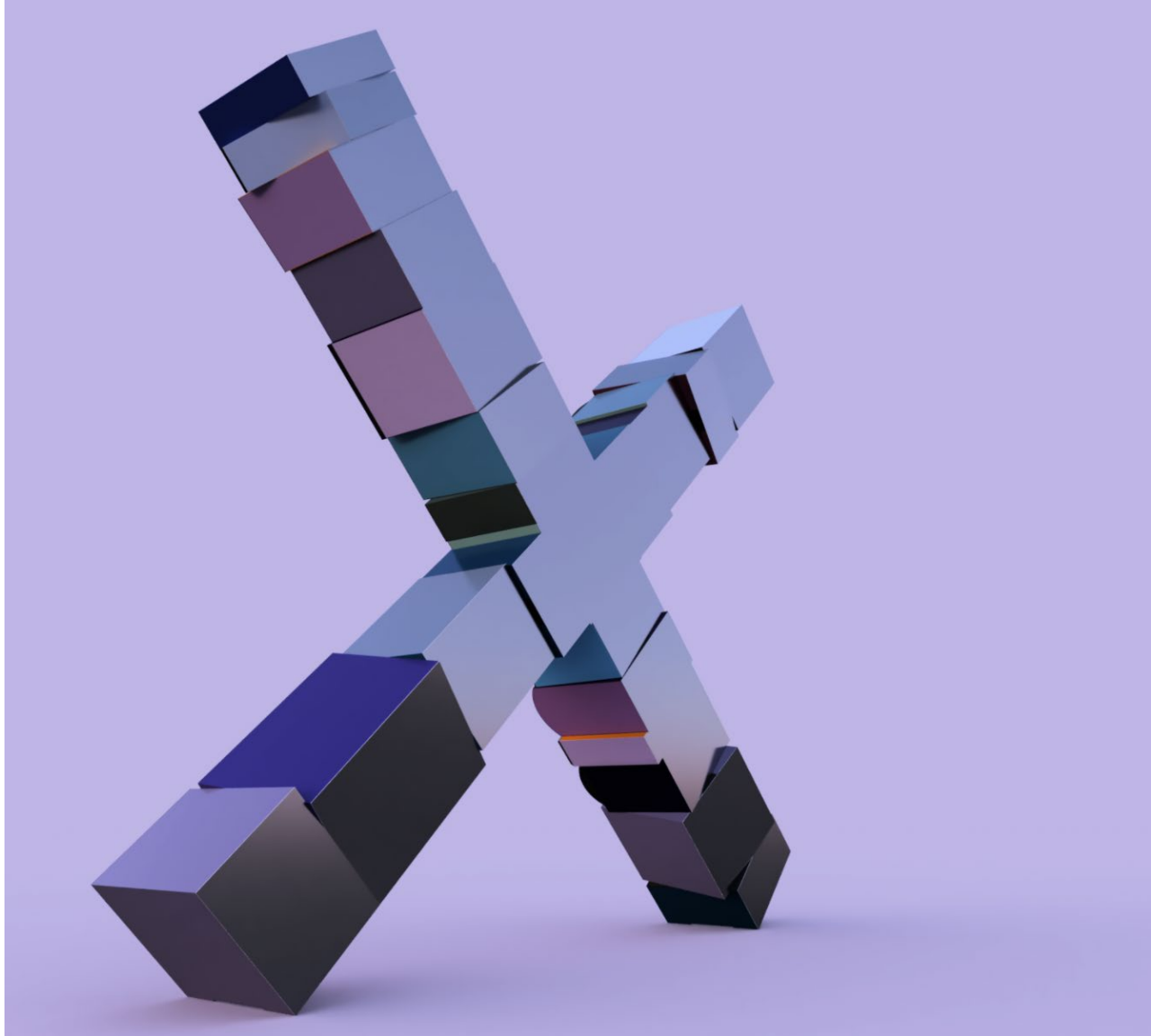
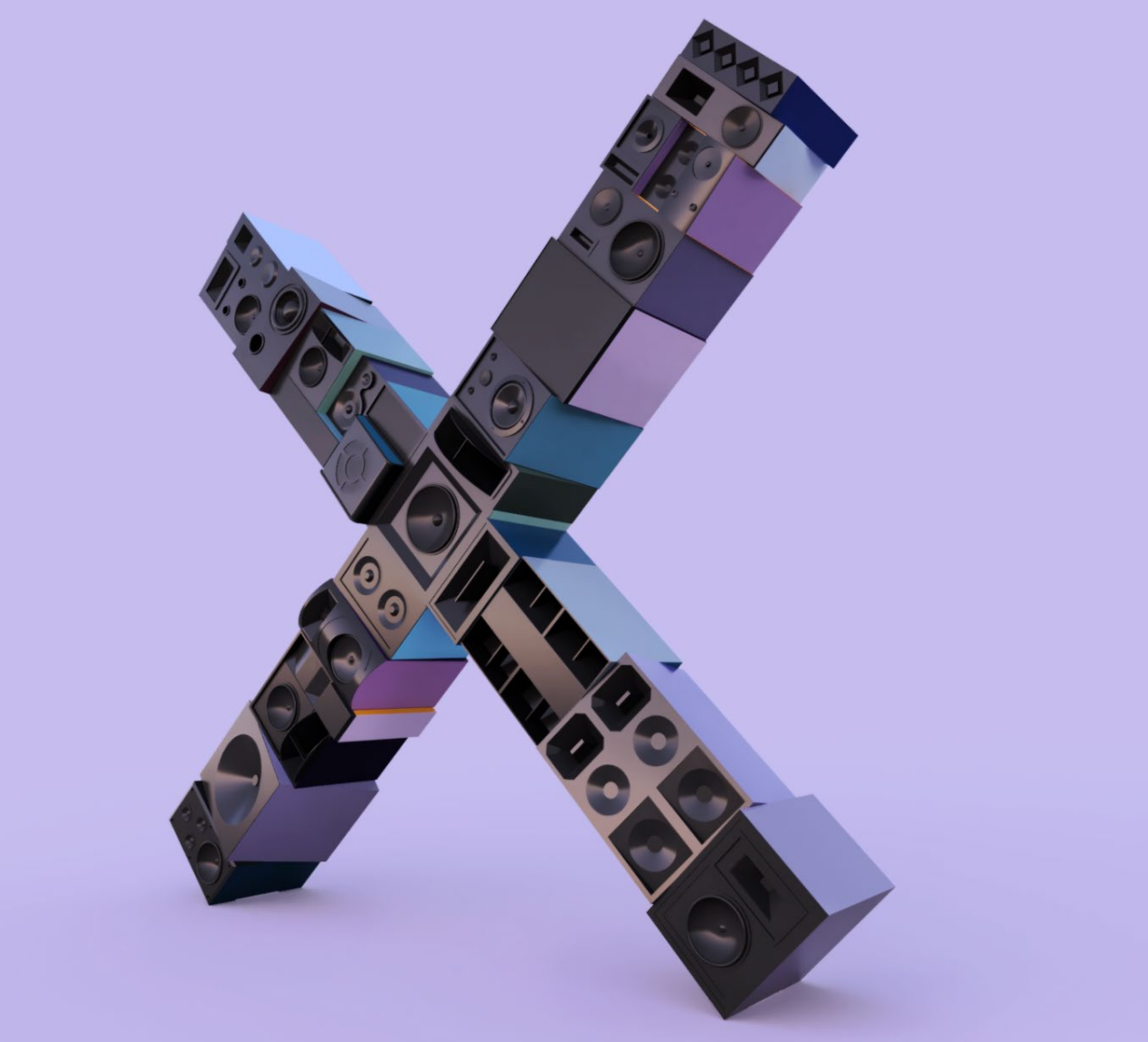
# andimgonnamisseyeverybody

## Central Plaza

This 20' x 20' sculpture, created by Christopher Paul Jordan, is sited in the North end of the public plaza. The piece is a portal into the spaces of radical gathering, hospitality, celebration, and care that have arisen throughout the history of AIDS.

[LEARN MORE](#)

coming May 2021



rendering by Chris Paul Jordan



photo credit Chris Paul Jordan





# The AMP: AIDS Memorial Pathway Project Timeline

## TOD site (plaza\*)

- *We're Already Here* by Civilization completed
- *andimgonnamisseyeverybody* by Chris Paul Jordan install May 2021

*\*plaza opened to the public March 2021*

## Cal Anderson Park

- *We're Already Here* by Civilization install April-May 2021
- *Ribbon of Light* by Horatio Law install summer 2021

## The AMP Dedication

**June 26, 2021**

Ordinance to accept Maintenance Funds

summer 2021

An architectural rendering of a modern urban plaza. The scene is set between two multi-story buildings with large windows and balconies. The plaza is paved with a pattern of light and dark grey tiles. In the center, there is a large, dark, three-dimensional 'X' sculpture. People are depicted walking, sitting on benches, and interacting in the space. A dog is also visible. The sky is overcast with a few birds flying. The overall atmosphere is one of a vibrant, public space.

# THE AMP: AIDS MEMORIAL PATHWAY

Using public art and technology to create a place for remembrance and reflection in Seattle about the AIDS epidemic.