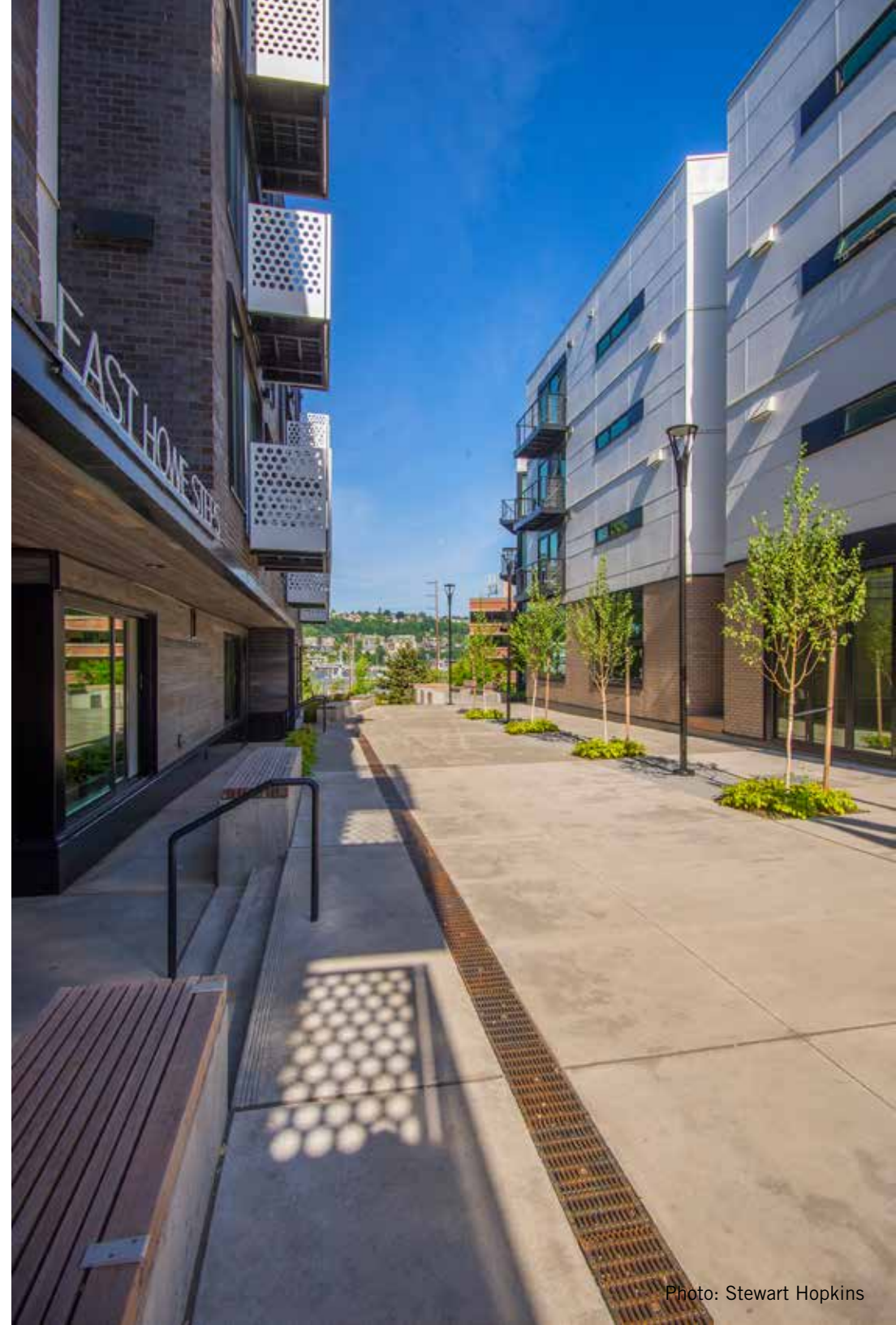


E HOWE STREET  
SUBTERRANEAN VACATION



# PUBLIC BENEFIT

## 5,668 SF PUBLIC PLAZA AND AMENITIES

- *Public plaza and pedestrian path in E Howe St.*
- *Sculpture by Mike Phifer*
- *Public seating for 35+*
- *Art lighting and pedestrian-scale light fixtures*
- *Durable materials and plantings*
- *Civic signage*
- *Voluntary building setbacks*

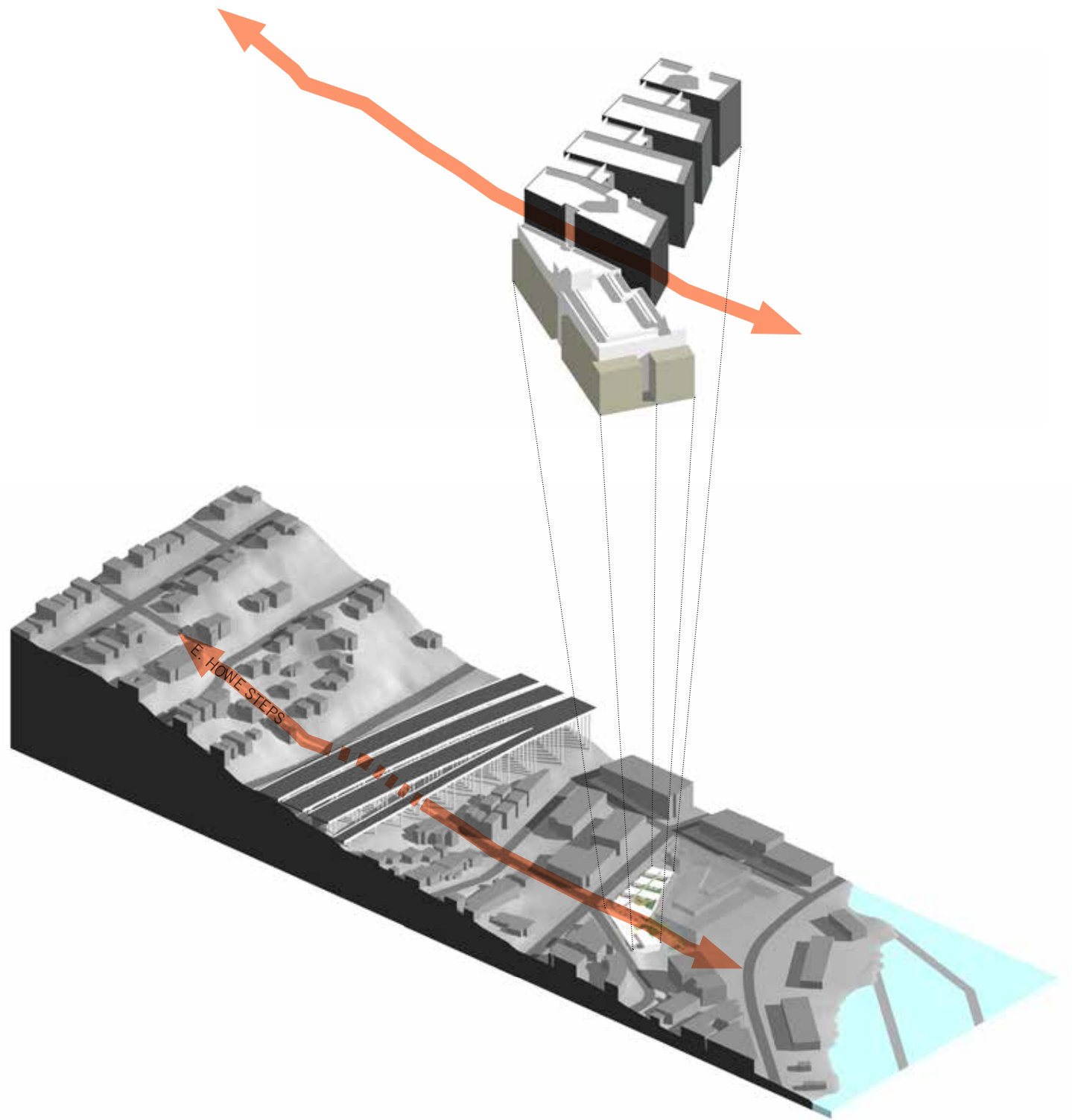
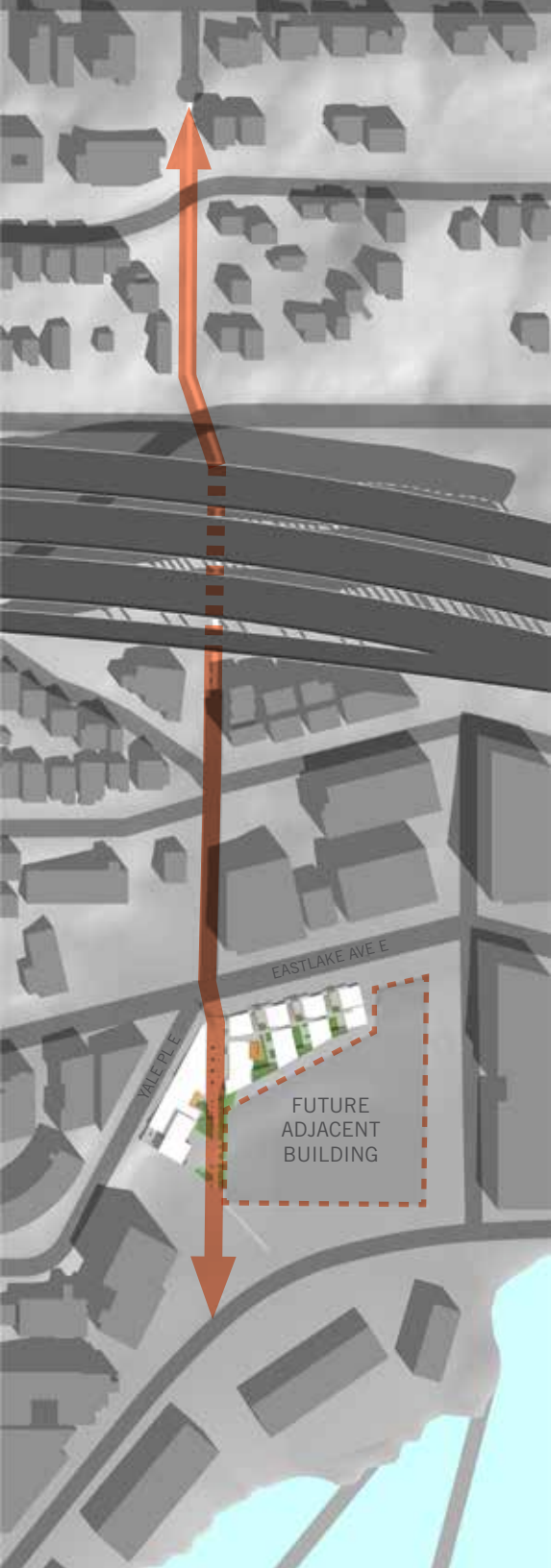
## STREETSCAPE ENHANCEMENTS AT EASTLAKE AVE E & YALE PL E

- *50% increase in ROW landscaping over code requirement*
- *60% increase in public bike racks over code requirement*



# E HOWE ST PLAN





URBAN CONTEXT: E HOWE STEPS



## PEDESTRIAN PATH & VIEW CORRIDOR TO LAKE UNION





Photo: Stewart Hopkins

PUBLIC PLAZA WITH SEATING FOR 35+





Photo: Affinity Photography

THE "PROW"





Photo: Stewart Hopkins



Photos: Affinity Photography

# “REUNION” SCULPTURE





Photo: Stewart Hopkins



Photo: Affinity Photography



Photo: Affinity Photography





## VOLUNTARY BUILDING SETBACKS





Photo: Stewart Hopkins

## STREETSCAPE ENHANCEMENTS AT EASTLAKE AVE E & YALE PL E





Photo: Affinity Photography