

# Healthy Food Access SLI Response

SEATTLE  
CITY HALL

9/7/2018

SDOT + OSE



City of Seattle

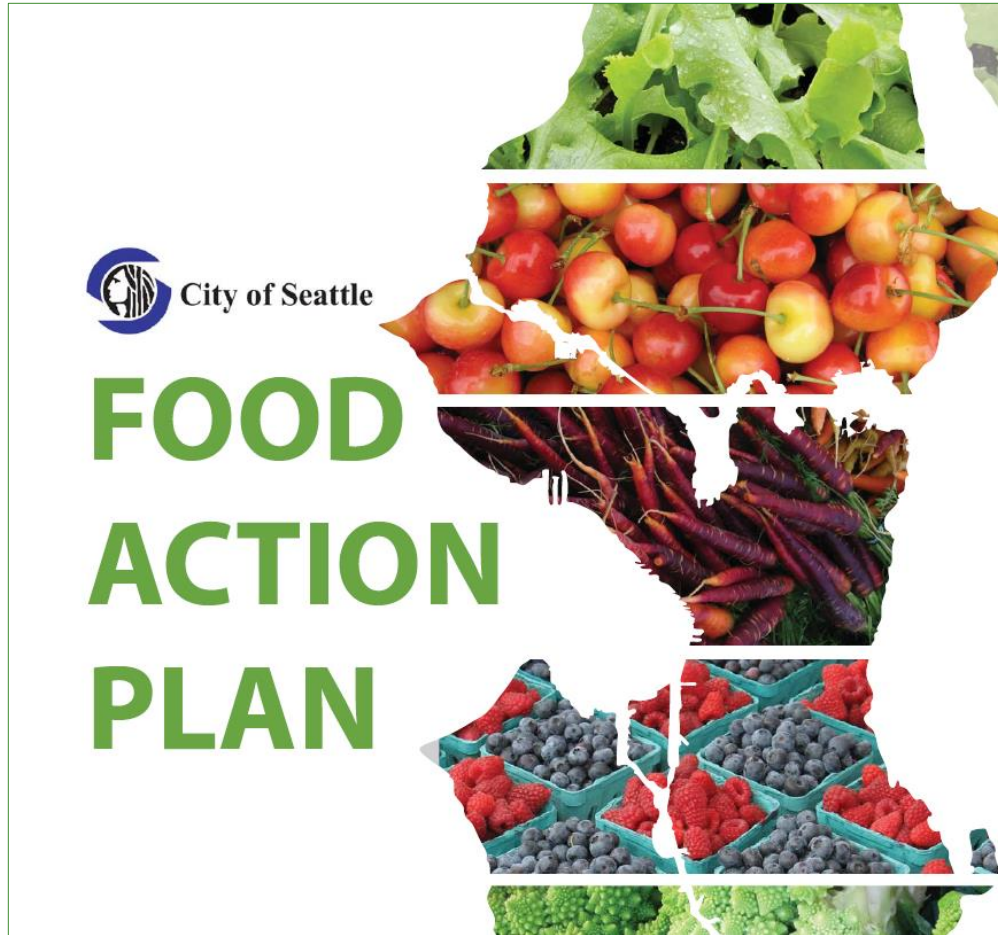
# SLI Overview

*The Seattle Department of Transportation (SDOT), in coordination with the Office of Sustainability and the Environment (OSE), report back to Council regarding how it would implement a transportation voucher pilot program to provide residents living in low-income housing located in food deserts (for example, Brettler Family Place in Magnuson Park) with free ride share vouchers to get to and from locations providing healthy food options, like grocery stores accepting Fresh Bucks and farmers markets. A major barrier to accessing healthy food and participation in the Fresh Bucks program is a user's ability to get to and from grocery stores and local farmers markets.*

# Overview

- Food Access Framework
- Transportation Equity Overview
- Food Access Mapping
- Pilot Program Analysis





Healthy Food for All

Grow Local

Local Economy

Prevent Food Waste

# Food Access Primary Factors

<b>Affordability</b>	Can I afford it?	Takes into account household financial circumstances and food pricing.
<b>Selection / Preference</b>	Do they have what I want?	Locations that stock culturally appropriate foods and foods that meet household preferences.
<b>Accessibility</b>	How easy is it to get there? Or, does it come to me?	Includes how close a store is located to home, work, or along other daily commute patterns, and transportation options available to get there.



# City of Seattle Food Access Programs

<b>Affordability</b>	<ul style="list-style-type: none"><li>• Fresh Bucks</li><li>• Fresh Bucks Rx</li><li>• Food bank and meal program investments</li><li>• Summer meals</li><li>• Senior Farmers Market Nutrition Program and produce delivery</li></ul>
<b>Selection / Preference</b>	<ul style="list-style-type: none"><li>• Fresh Bucks Retail (Somali &amp; Latino grocers)</li><li>• Culturally relevant farm stands</li><li>• P-Patch market garden stands</li></ul>
<b>Accessibility</b>	<ul style="list-style-type: none"><li>• Fresh Bucks to Go (hub delivery)</li><li>• Farm to Table (childcare/preschool/senior meals)</li><li>• In-school and after-school snack programs</li><li>• Nutrition Transportation program for older adults</li><li>• Transportation equity program investments</li></ul>



# Transportation Equity Overview

- Seattle is the fastest growing city in the U.S.
- Our growth presents opportunities and challenges, including for mobility and affordability
- Seattle Department of Transportation (SDOT) & partner agencies have responded with major investments in transportation



# Transportation Equity Program

Safe, accessible, affordable, and environmentally sustainable transportation options

Core activities:

- Affordability programming
- Policy advisement
- Engagement

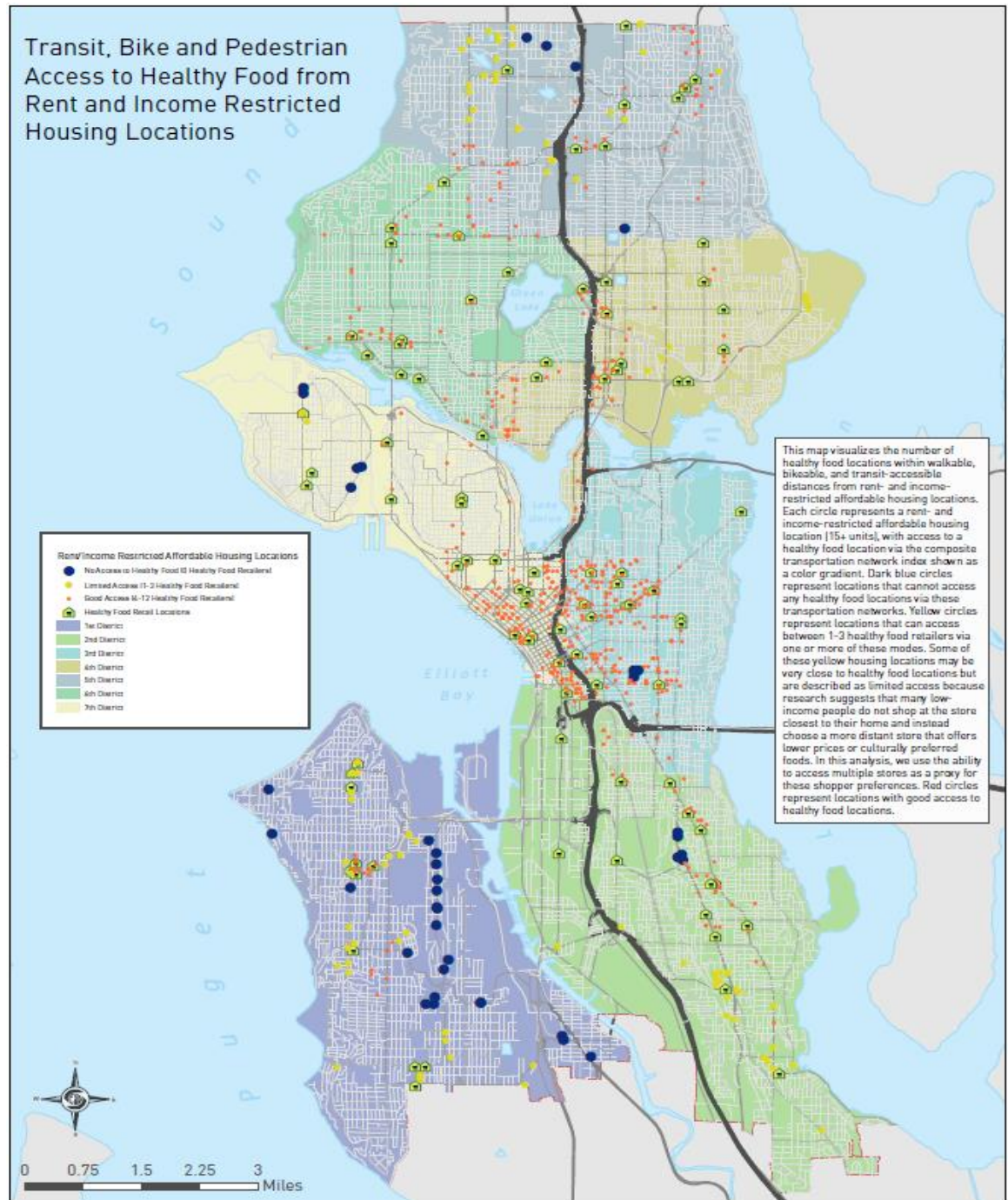




# Programs Benefitting Food Access

<p><b>ORCA LIFT Partnership (Low-income Access to Transit)</b></p> <p>SDOT, the Seattle Department of Neighborhoods, King County Metro, &amp; Public Health of Seattle-King County</p>	<ul style="list-style-type: none"><li>• Income-qualifying participants</li><li>• Pre-loaded ORCA LIFT cards when they enroll</li><li>• Transit vouchers</li><li>• Regional Reduced Rate Permit</li></ul>
<p><b>Ambassador Program</b></p> <p>SDOT, Seattle Department of Neighborhoods, and community-based organizations</p>	<ul style="list-style-type: none"><li>• Affordable transportation information</li><li>• Pre-loaded ORCA LIFT cards when they enroll</li><li>• Transit vouchers</li><li>• Regional Reduced Rate Permit</li></ul>
<p><b>Car Tab Rebate</b></p> <p>SDOT, Seattle Department of Human Services, Washington State Department of Licensing</p>	<ul style="list-style-type: none"><li>• Income-qualifying participants</li><li>• Paid Car Tab Fee with a \$20 rebate</li></ul>

# Composite Transportation Access to Grocery Stores and Fresh Retailers



# Rideshare Voucher Evaluation

- *Pilot Program Framework:*
  - An 8-month pilot that includes outreach, program administration, and evaluation
  - Subsidy to reduce average TNC trip cost to be comparable to bus fare twice per week
  - All-in cost for 105 housing units: \$283,700
- *Benefits:* convenient, responsive to preference
- *Issues:* equity, reliability, program cost
- *Conclusion:* not cost-efficient; should explore alternative strategies

# Alternative Strategies

- *Multipurpose transportation voucher* – A voucher for any mode of transportation
- *Microtransit* – A short route or on-demand transit for low access areas
- *Peer to Peer* – A shared ride and/or delivery service, by and for the local community
- *Direct Delivery* – Subsidized healthy food delivery to homes
- *Food Hub* – A convenient, central location for food deliveries
- *Service Expansion* – Additional investments in transit service in low access areas

Benefits and challenges of each option would need to be explored with the community.

**Recommendation:** Community outreach and engagement on potential strategies.

**Questions?**