

Opportunity Mapping & Displacement Risk Analysis

Opportunity mapping (www.psrc.org/opportunity-mapping)

To assess the amount of opportunity that exists in neighborhoods today, the Puget Sound Regional Council developed the opportunity mapping tool. This tool allows the analysis of growth that may take place in areas with moderate to high opportunity.

Growth in areas of opportunity is based on an “Opportunity Index,” which combines measures of five key elements of neighborhood opportunity and positive life outcomes: education, economic health, housing and neighborhood quality, mobility and transportation, and health and environment. The level of opportunity score (very low, low, moderate, high, very high) is determined by sorting all census tracts into quintiles based on their index scores. Areas of opportunity that experience greater proportions of growth may experience an increased risk of displacement.

Displacement risk analysis (www.psrc.org/displacement-risk-analysis)

The displacement risk tool was developed to identify areas at greater risk of displacement based on current neighborhood conditions.

Displacement Risk is a composite of indicators representing five elements of neighborhood displacement risks: socio-demographics, transportation qualities, neighborhood characteristics, housing, and civic engagement. The data from these five displacement indicators were compiled into a comprehensive index of displacement risk for all census tracts in the region.

For more information, contact:

Brian Lee (blee@psrc.org)



Puget Sound Regional Council

Opportunity index

Education

- English test scores
- Math test scores
- Student poverty
- Teacher qualifications
- Graduate rates

Economic health

- Living wage jobs
- Job growth trends
- Unemployment rates

Housing & neighborhood quality

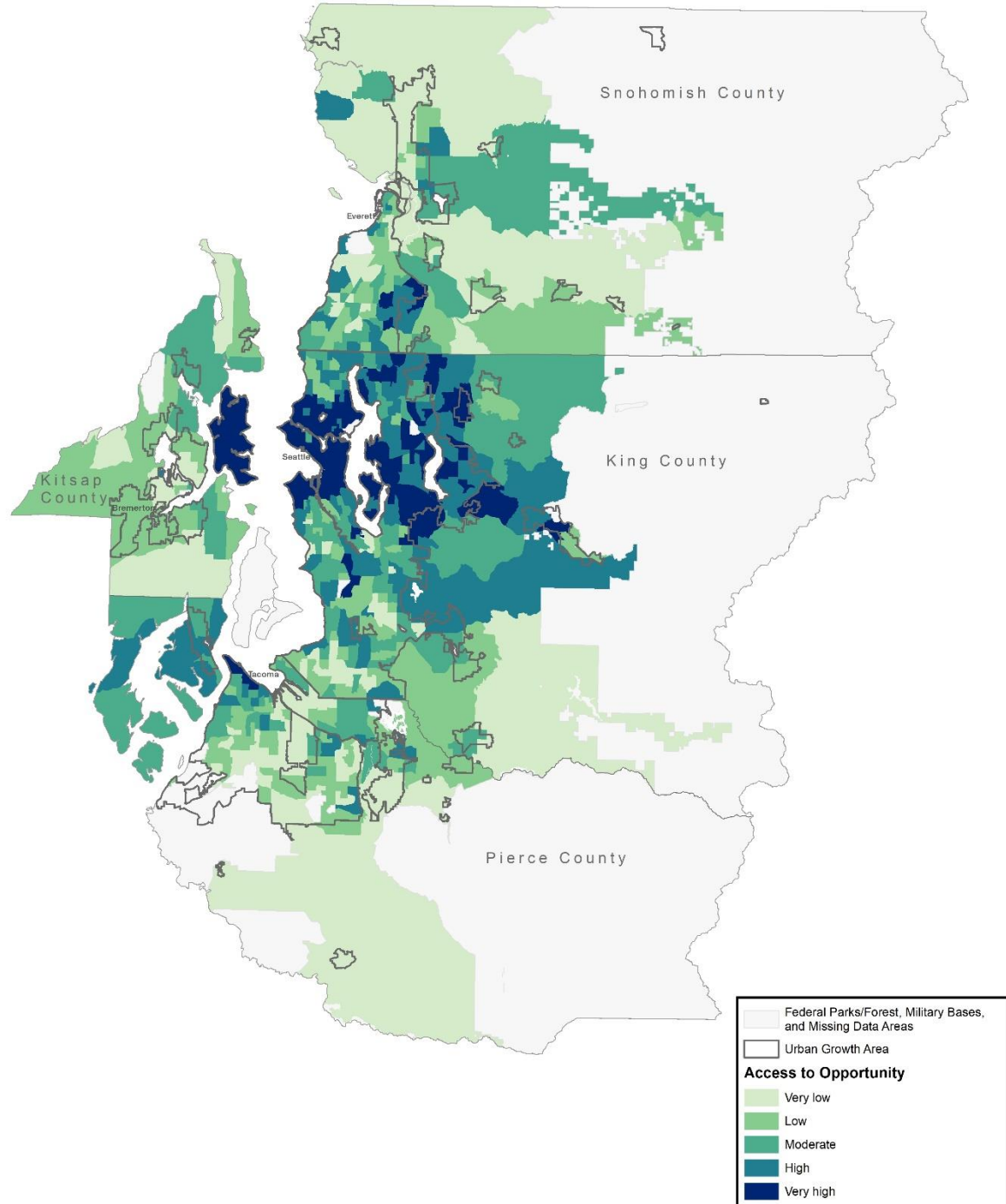
- Housing vacancy rates
- Housing conditions
- Crime Index

Mobility & transportation

- Drive commute costs
- Access to transit
- Average transit costs
- Walk commutes

Health & environment

- Proximity to parks
- Toxic waste
- Access to healthy food



Displacement risk index

Socio-demographics

- Race/ethnicity
- English proficiency
- Education attainment
- Renter households
- Housing cost-burden households
- Low-income households

Transportation qualities

- Access to jobs by auto
- Access to jobs by transit
- Proximity to existing transit
- Proximity to planned transit

Neighborhood characteristics

- Proximity to supermarkets, pharmacies, restaurants
- Proximity to schools, parks
- Proximity to high-income areas

Housing

- Development capacity
- Median rent

Civic engagement

- Voter turnout

