

Landmark Designation

HISTORIC PRESERVATION



Designation Standards

In order to be designated, the building, object, or site must be at least 25 years old and must meet at least one of the six standards for designation outlined in the Seattle Landmarks Preservation Ordinance ([SMC 25.12.350](#)):

- a) It is the location of, or is associated in a significant way with, a historic event with a significant effect upon the community, City, state, or nation; or
- b) It is associated in a significant way with the life of a person important in the history of the City, state, or nation; or
- c) It is associated in a significant way with a significant aspect of the cultural, political, or economic heritage of the community, City, state or nation; or

Designation Standards, cont.

- d) It embodies the distinctive visible characteristics of an architectural style, or period, or a method of construction; or
- e) It is an outstanding work of a designer or builder; or
- f) Because of its prominence of spatial location, contrasts of siting, age, or scale, it is an easily identifiable visual feature of its neighborhood or the city and contributes to the distinctive quality or identity of such neighborhood or the City.

In addition to meeting at least one of the above standards, the object, site, or improvement must also possess integrity or the ability to convey its significance.

802 16th Avenue

Considine-Cohen House /
Immaculate Conception Church Convent

Designation: March 17, 2021

Standard: C, D and E

Controlled features:

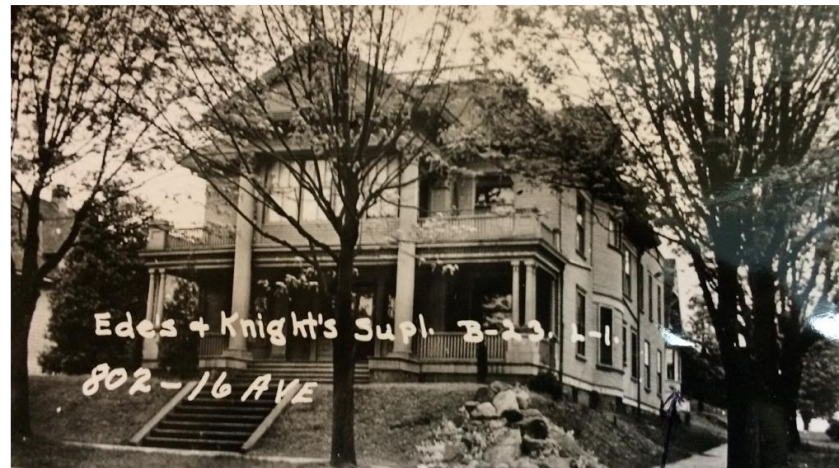
- the site
- the house exterior including stained glass windows

Date Built: began 1900

Architect: Edwin W. Houghton



Contemporary photo, 2019



Historic photo, 1938

