



**Pinehurst Way NE and NE 117th St
Intersection
Easement Acceptance**

HAZEL WOLF K-8 PINEHURST SCHOOL



Our vision, mission, and core values

Vision: Seattle is a thriving equitable community powered by dependable transportation

Mission: to deliver a transportation system that provides safe and affordable access to places and opportunities

Committed to **6 core values:**

- Equity
- Safety
- Mobility
- Sustainability
- Livability
- Excellence

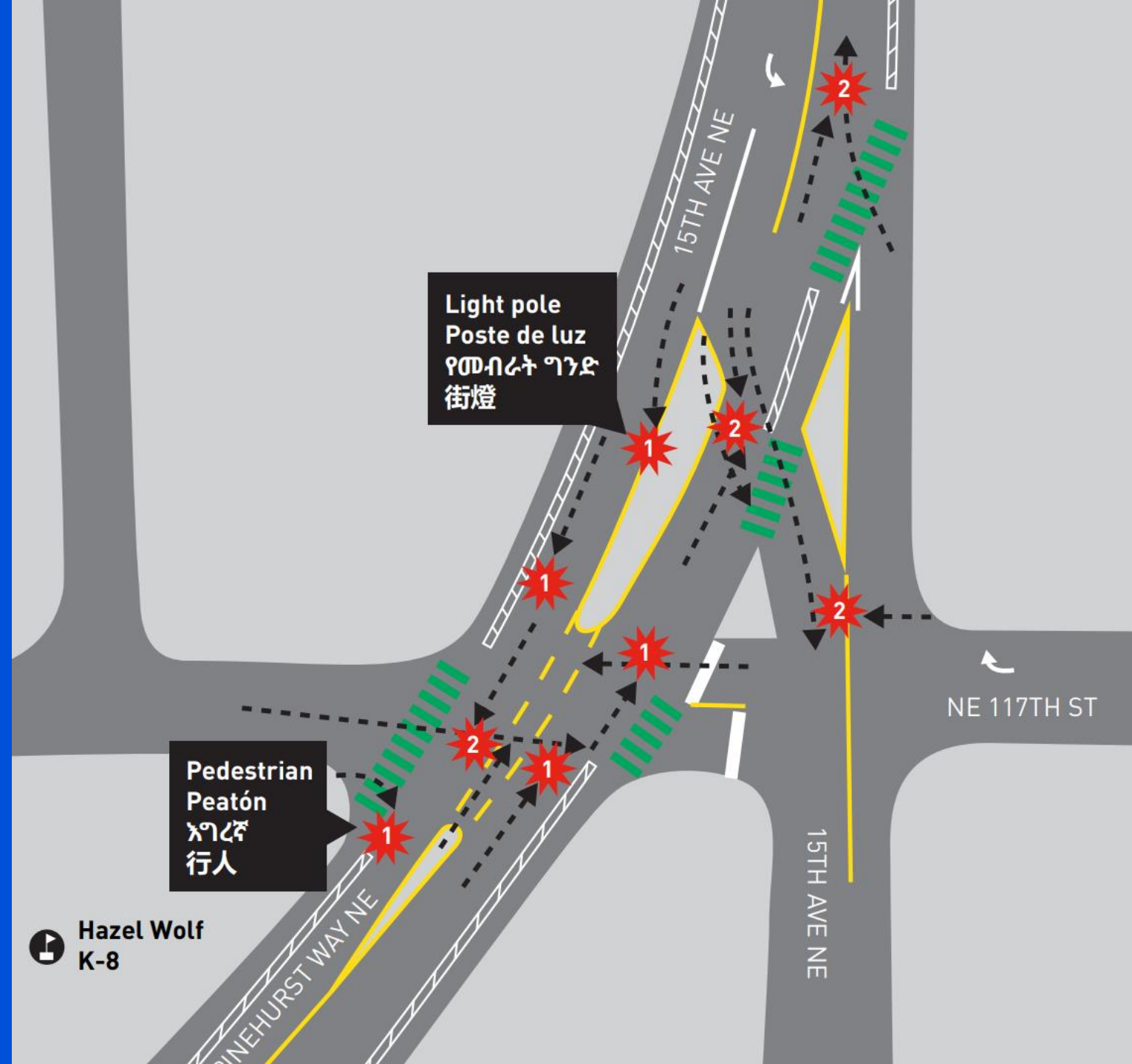
Presentation overview

- Background
- Project area and collision patterns
- Existing conditions
- Intersection design
- Project details
- Project benefits

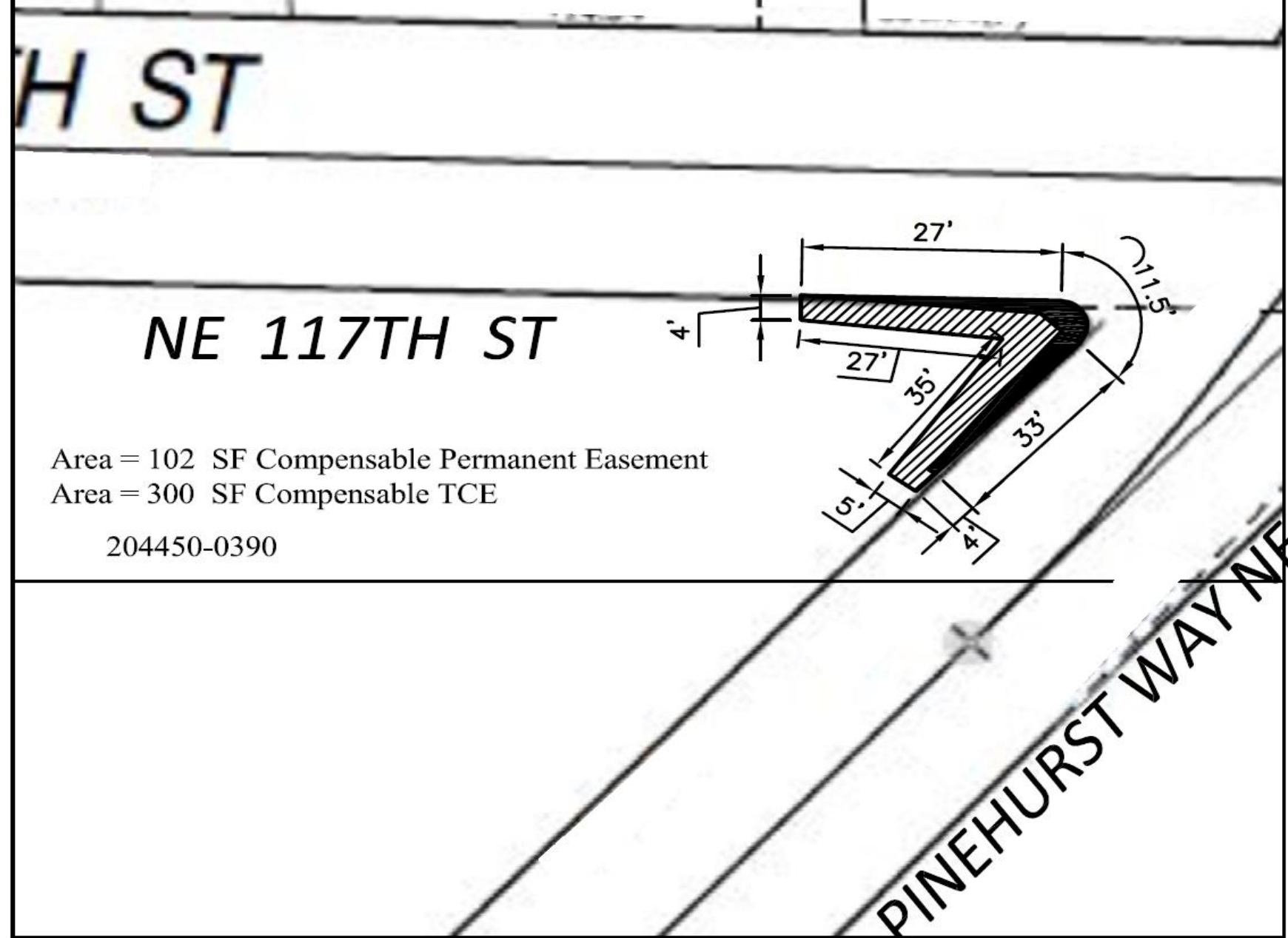
Background

- Hazel Wolf K-8 Stem School and neighborhood residents applied and was chosen for the Your Voice, Your Choice program, to implement and expedite neighborhood project
- Project goal centered on upgrading the intersection of Pinehurst Way NE and NE 117th St to enhance safety and mobility and improve school access
- City conducted traffic study that uncovered collision pattern
- Intersection redesign was determined to be an appropriate resolution, along with adding new sidewalks connecting to the school
- Project has received federal grant funds through WSDOT

Project Area and Collision Patterns



Easement Area



Area = 102 SF Compensable Permanent Easement

Area = 300 SF Compensable TCE

204450-0390

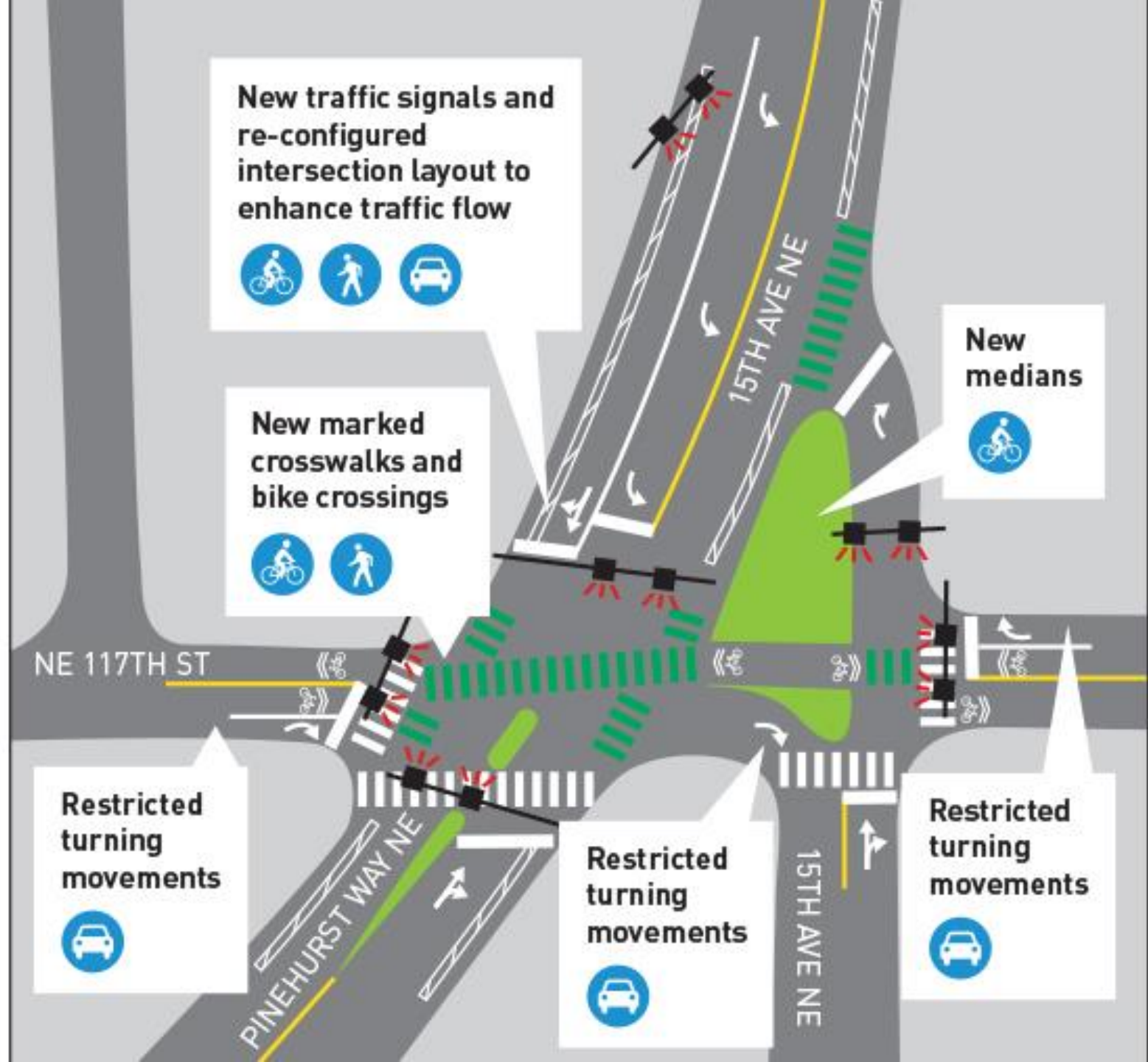


Existing conditions

Intersection Redesign

- Intersection reconfiguration
- New traffic signals, with dedicated crossing for bikes
- Installation of marked cross walks, bike crossings, and medians
- Restricted turning movements
- Sidewalk repairs and curb ramp improvements
- New sidewalk along the South side of NE 117th St between Roosevelt Ave NE and 12th Ave NE

Project Details



Project Benefits

- Improves walking and biking route to school
- Reduces future collisions
- Provides new connection to future sites of:
 - 1) Pinehurst Neighborhood Greenway
 - 2) Northgate Link Light Rail Station

Questions?

Joel.Darnell@seattle.gov | (206) 684-5065

<https://www.seattle.gov/transportation/projects-and-programs/programs/pedestrian-program/pinehurst-way-ne-and-ne-117th-st-intersection-and-sidewalk-project>

www.seattle.gov/transportation

