



Seattle City Light



# SKAGIT PROJECT LICENSE ENVIRONMENTAL HIGHLIGHTS

Lynn Best, Chief Environmental Officer | February 1, 2018

# ENVIRONMENTAL PROGRAMS AT THE SKAGIT

---

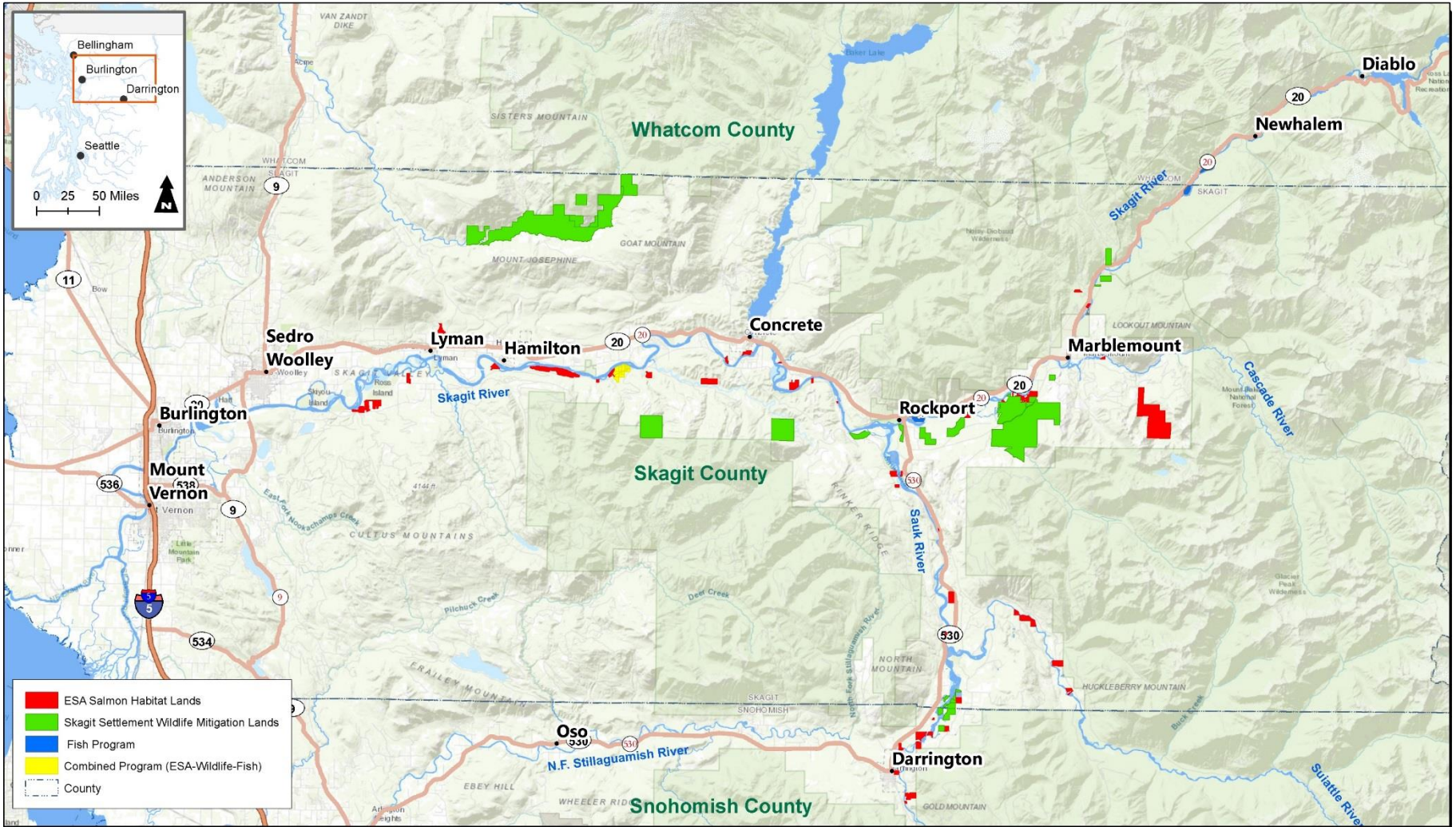
- Wildlife and Fisheries Habitat Lands
- Environmental Learning Center
- Brief mention of some of the other programs

## SKAGIT HABITAT LANDS

---

- FERC license requires Habitat Acquisition and Management (\$17 million in 1990)
- Committee of agency and Tribal representatives approves acquisitions
- Endangered Species Act (ESA) Land Program added after Chinook and Bull Trout were listed in Western Washington
- Combined acquisitions about 14,000 acres





- ESA Salmon Habitat Lands
- Skagit Settlement Wildlife Mitigation Lands
- Fish Program
- Combined Program (ESA-Wildlife-Fish)
- County



**ESA Salmon Habitat and Wildlife Mitigation Lands**  
(Snohomish, Skagit and Whatcom Counties)

1:260,000



Created 1/25/2018 by Seattle City Light,  
Environment, Land & Licensing Business Unit.  
SCL provides no warranty, expressed or implied,  
as to the accuracy, reliability or completeness of this data.







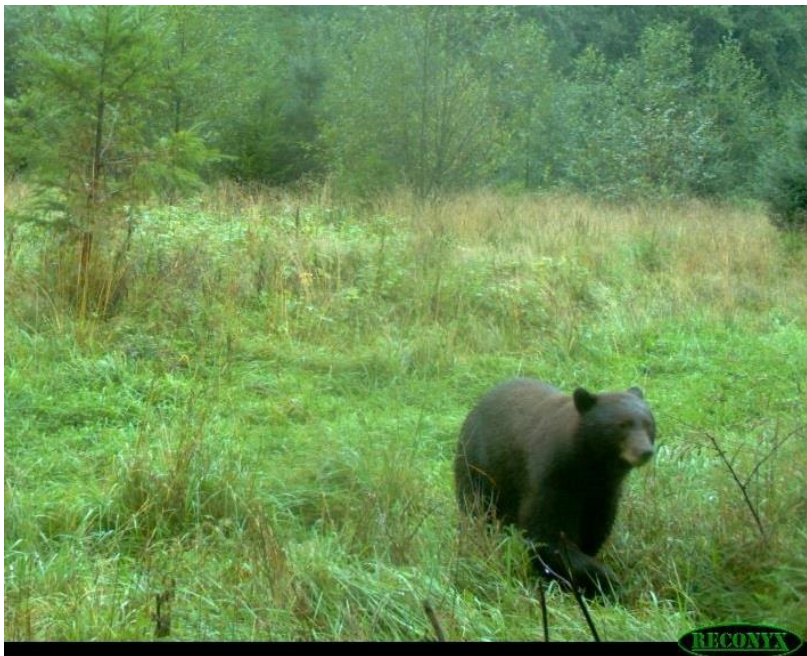


# ELK ON WILDLIFE LANDS





# WILDLIFE ON CITY LIGHT LANDS





# PINK SALMON AND AMERICAN DIPPER



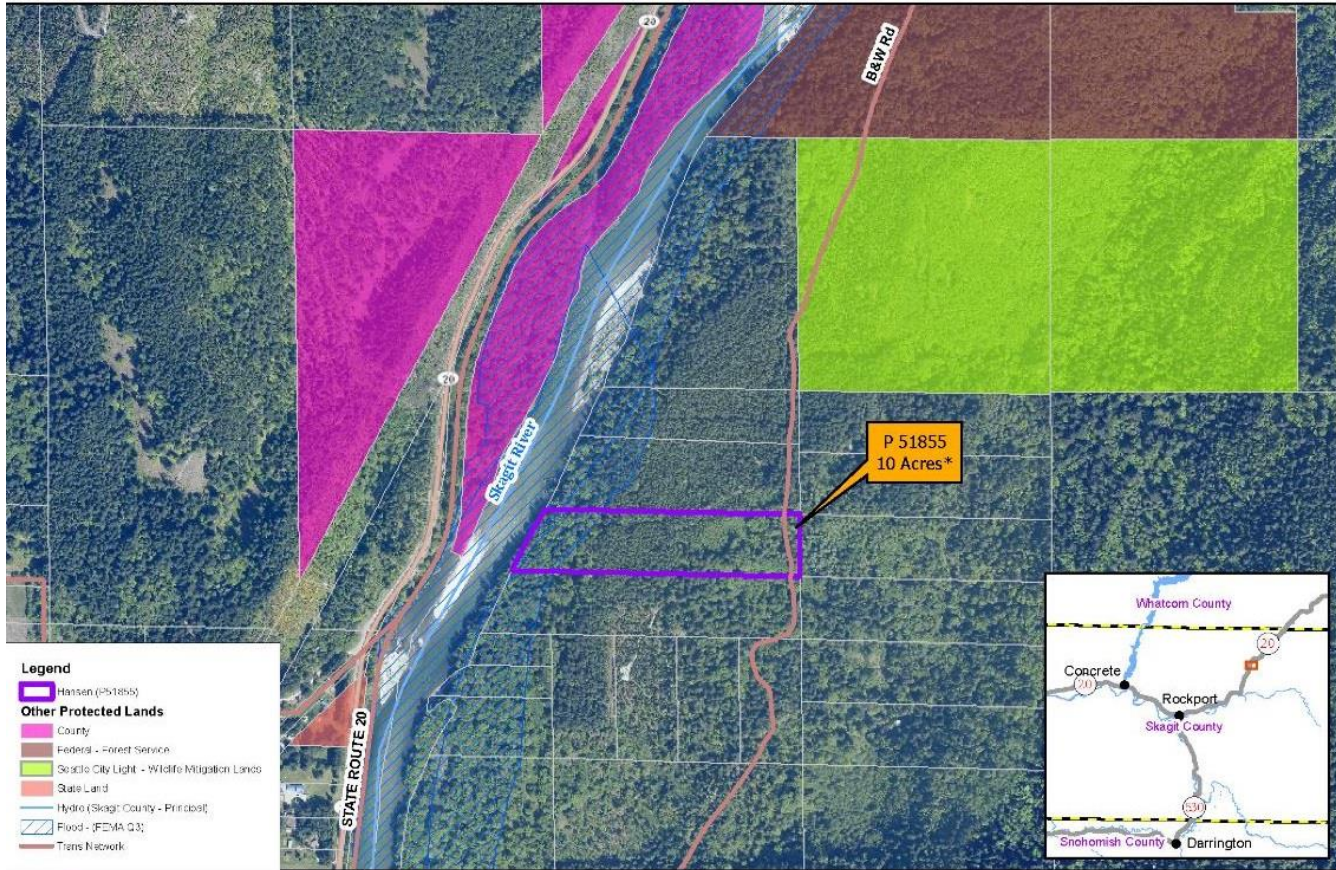
## HANSEN PARCEL

---

- 10 acres of riparian and lowland conifer forest
- Patches of large red cedar trees
- 375 feet of Skagit River shoreline
- Connects City Light and federal lands in the area



# HANSEN PARCEL



**Legend**

- Hansen (P51855)
- Other Protected Lands**
- County
- Federal - Forest Service
- Seattle City Light - Wildlife Mitigation Lands
- State Land
- Hydro (Skagit County - Princess)
- Flood - (FEMA Q3)
- Trails Network

 **Seattle City Light**

Created 11/20/2015 by Seattle City Light. Environmental Affairs & Real Estate Division. SC.L provides no warranty, express or implied, as to the accuracy, reliability or completeness of this information.

**Exhibit B - Purchase & Sales Agreement**

Hansen - Skagit County Parcel No. P51855



Township: 36 Range: 11 Section: 29  
Quarter: 04

# NORTH CASCADES ENVIRONMENTAL LEARNING CENTER

---

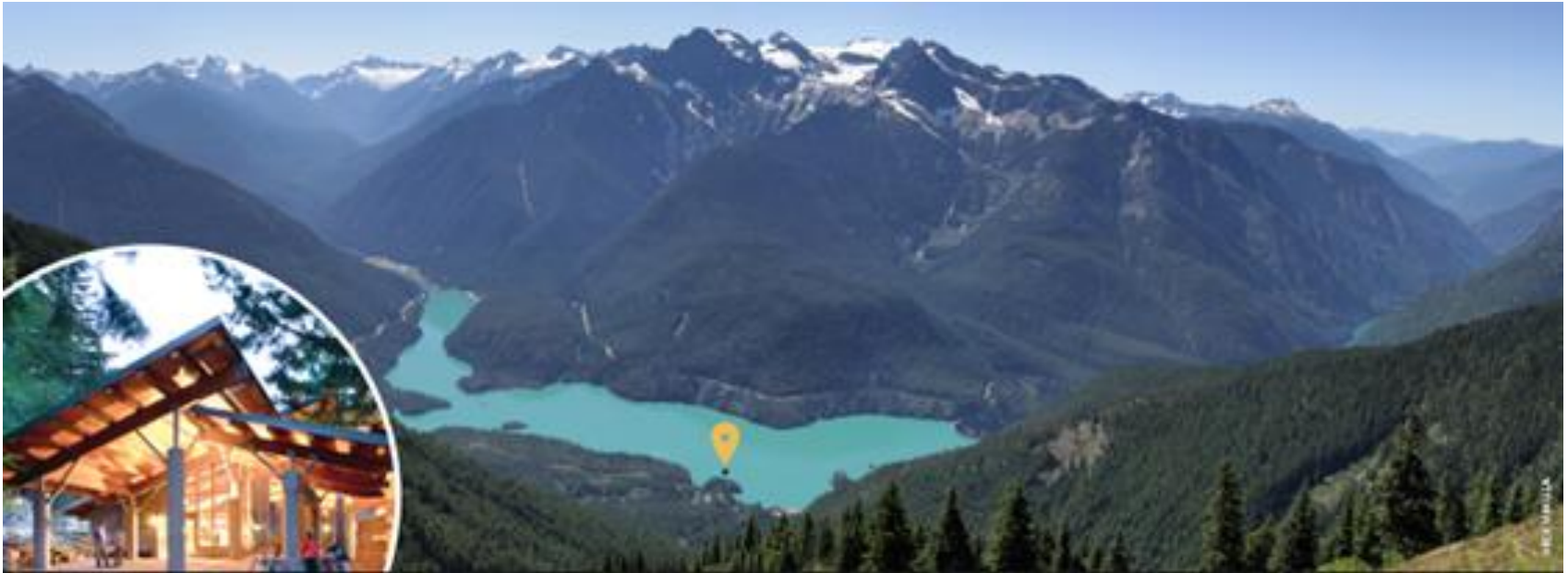
- Partnership of City Light, the National Park Service, and North Cascades Institute
- City Light built it, provides funding for educational programs, and for maintenance
- Continues to provide oversight in coordination with partners



# NORTH CASCADES ENVIRONMENTAL LEARNING CENTER



# NORTH CASCADES ENVIRONMENTAL LEARNING CENTER





# NORTH CASCADES ENVIRONMENTAL LEARNING CENTER

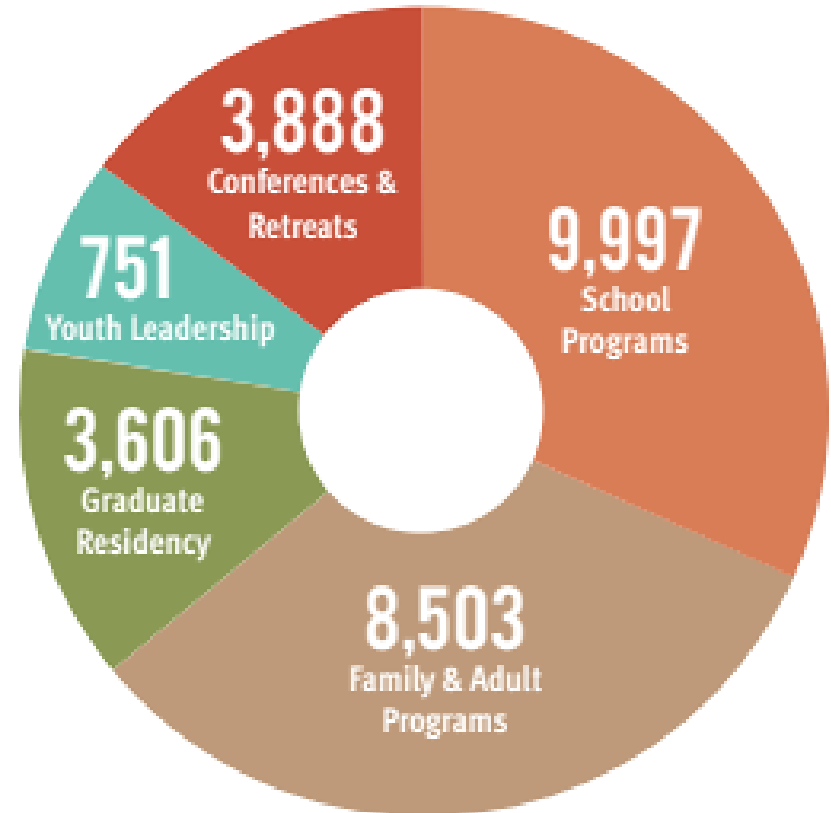


# NORTH CASCADES ENVIRONMENTAL LEARNING CENTER

## EDUCATIONAL PROGRAMS

- Reach all ages
- Mountain school – 2,600 school students annually plus 400 teachers and chaperones
- Youth Leadership – 80 summer backcountry trip students

### LEARNER DAYS (26,000 DAYS)

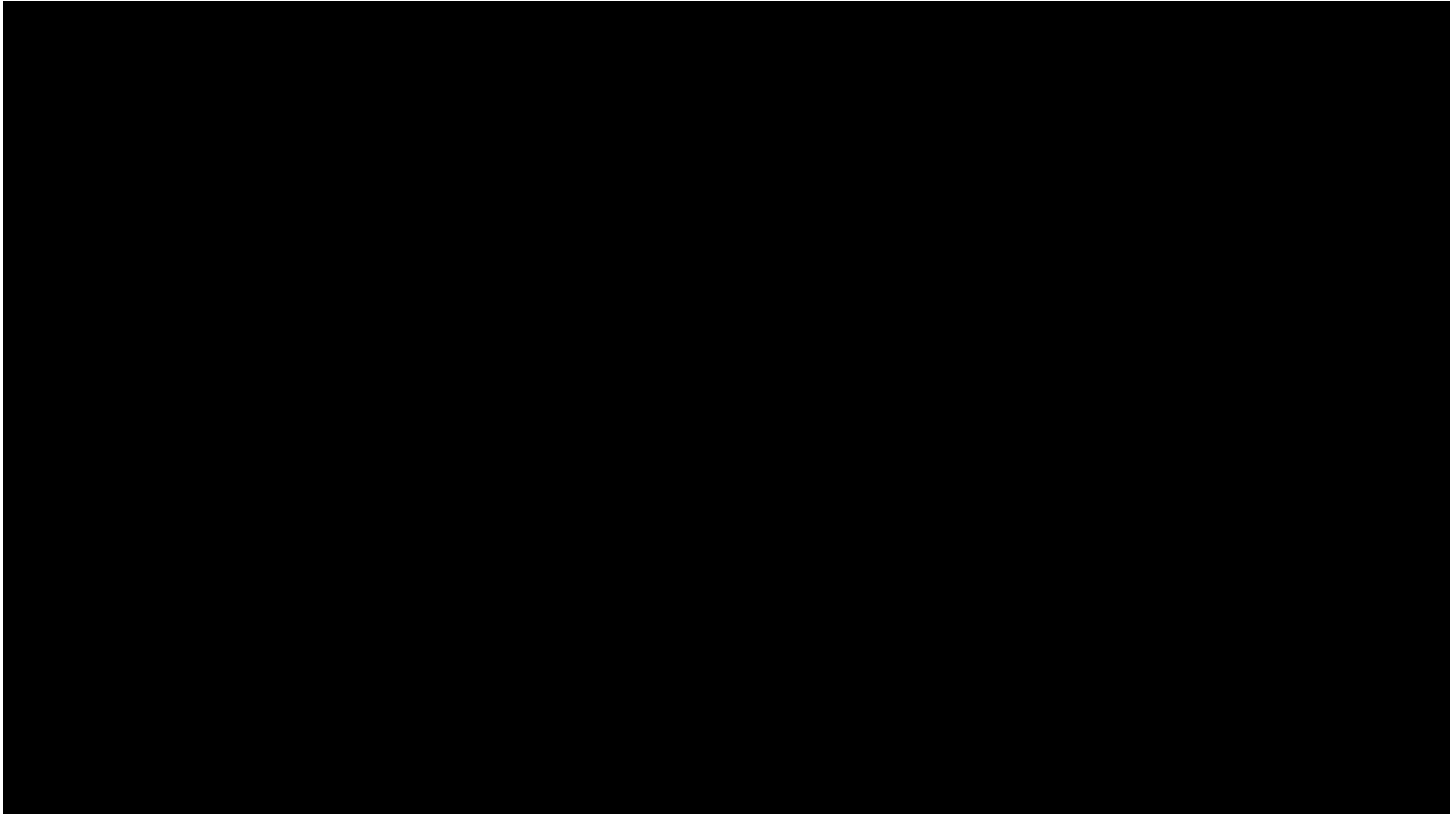




# NORTH CASCADES ENVIRONMENTAL LEARNING CENTER



# VIDEO





## OTHER ENVIRONMENTAL PROGRAMS

---

- Fish Protection
- Wildlife Research
- Historic Preservation
- Archaeology and Tribal Cultural Program
- Recreation
- Aesthetic Improvement

# CITY LIGHT

## OUR MISSION

Seattle City Light is dedicated to delivering customers affordable, reliable and environmentally responsible electricity services.

## OUR VISION

We resolve to provide a positive, fulfilling and engaging experience for our employees. We will expect and reinforce leadership behaviors that contribute to that culture. Our workforce is the foundation upon which we achieve our public service goals and will reflect the diversity of the community we serve.

We strive to improve quality of life by understanding and answering the needs of our customers. We aim to provide more opportunities to those with fewer resources and will protect the well-being and safety of the public.

We aspire to be the nation's greenest utility by fulfilling our mission in an environmentally and socially responsible manner.

## OUR VALUES

Safety, Environmental Stewardship, Innovation, Excellence, Customer Care



Seattle City Light