

T6

TRANSPORTATION AND SPU COMMITTEE EARLY BRIEFING

AUGUST 16, 2022

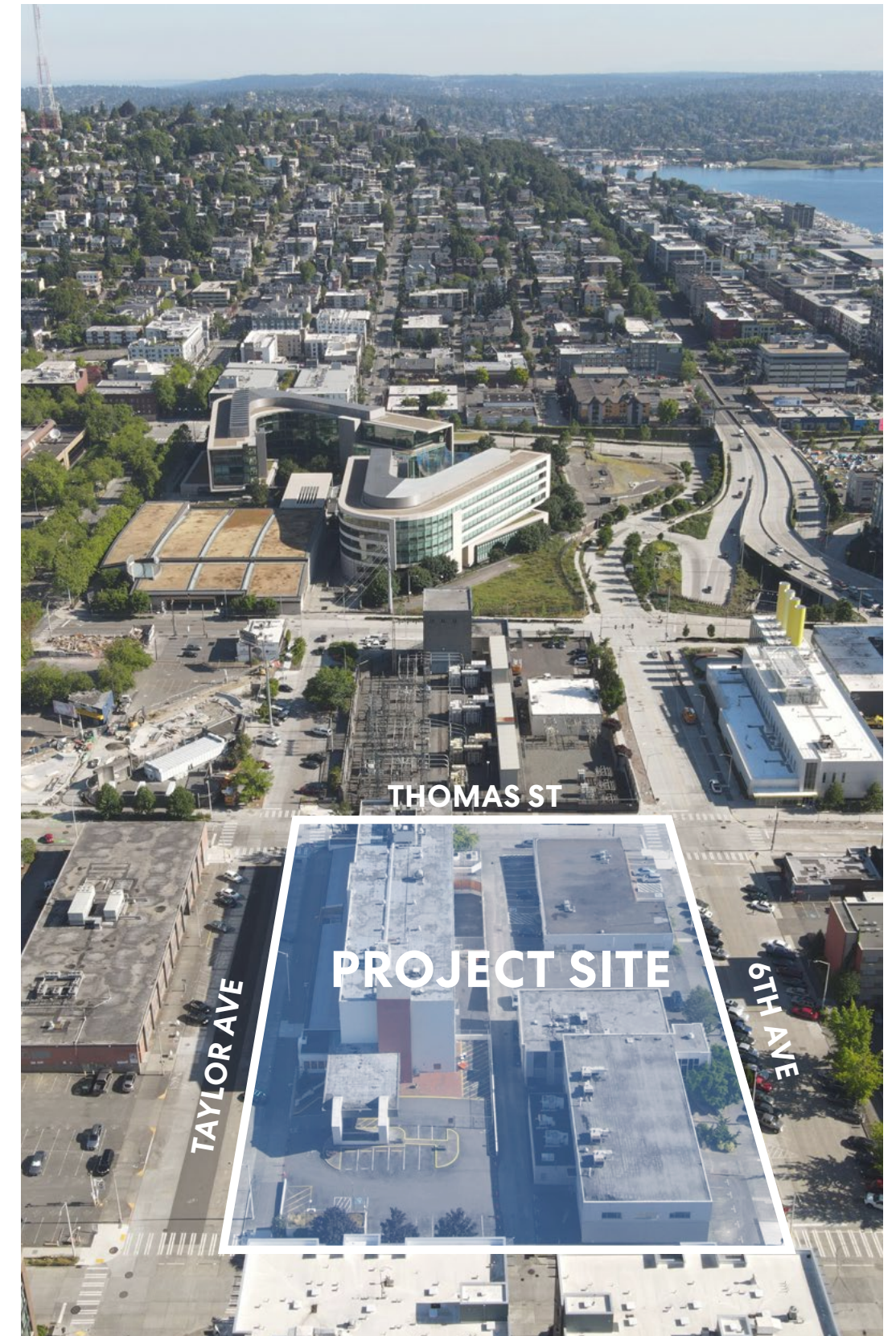


ALLEY VACATION REQUEST RATIONALE /

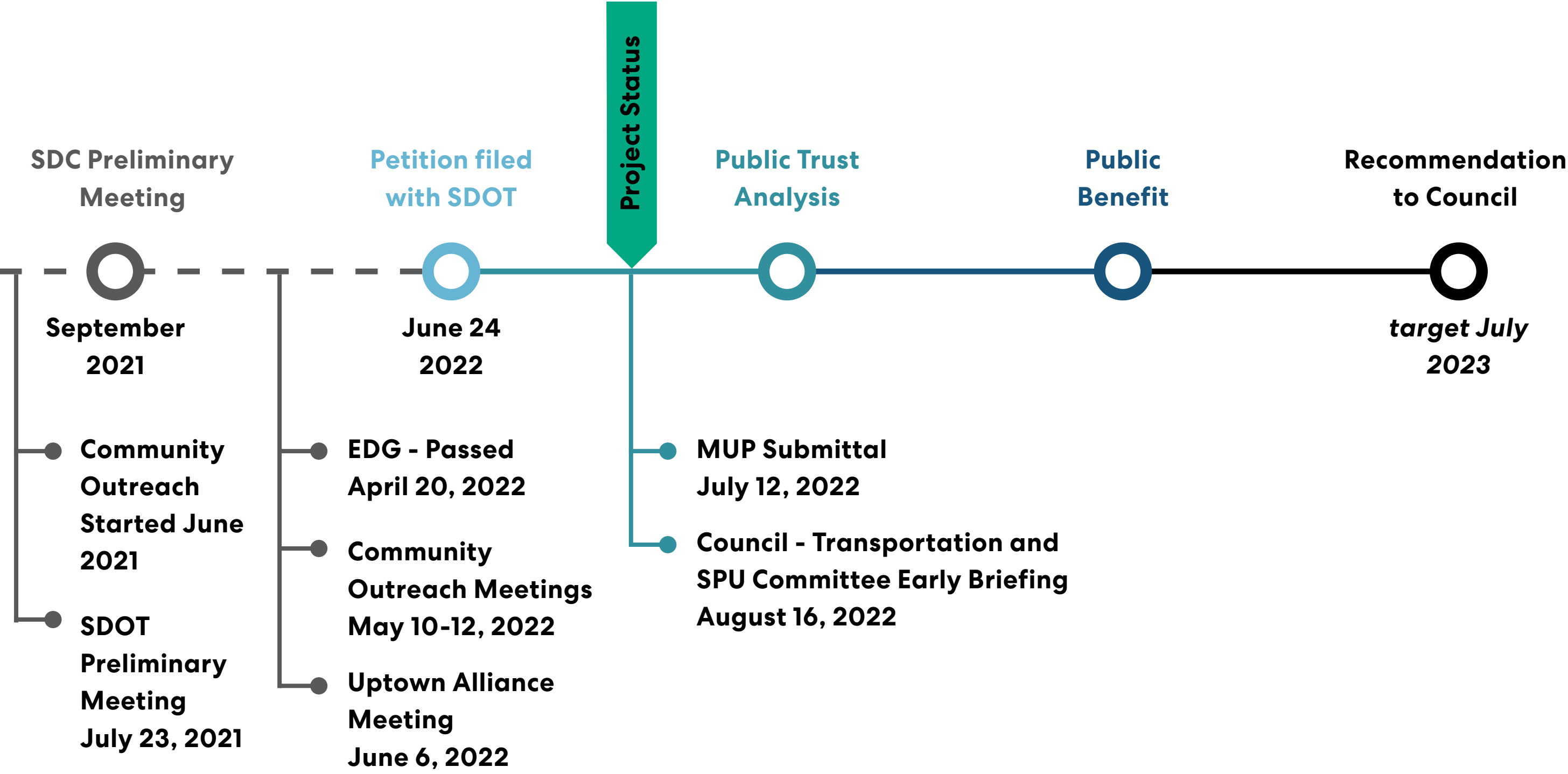
The T6 project is a full block development that proposes a 9-story and an 8-story building with shared below grade levels of parking and support spaces.

The alley vacation is requested in order to:

- **Create Improved, Safer Pedestrian Flow**
 - providing a dedicated pedestrian connection and limiting vehicular access to a single curb cut for the full block
- **Create New Space for Neighborhood Uses**
 - project proposes north west (at Taylor and Thomas) and a south east (at John and 6th) plaza spaces united by a dedicated pedestrian connection
- **Enhance Thomas Street Pedestrian Realm**
 - Vacating the right-of-way at the alley eliminates passenger and service vehicles use of the alley, and the mid-block curb cut on Thomas Street
- **Increase Site Functionality**
 - Creating a shared below grade podium allows for a single vehicular access point for the block and allows for commercial loading to occur below grade
- **Enhance Neighborhood Character**
 - Additional open space emphasizes connection diagonally across the site, emphasizing the neighborhood amenities and connection to the Seattle Center, public skate park, and a gateway to the Uptown neighborhood



ALLEY VACATION PROCESS /



COMMUNITY OUTREACH /

The project's **Community Outreach Plan** was approved by **Seattle Department of Neighborhoods** in **April, 2022** and includes the following:

- **Electronic / Digital Methods**

- Note: all methods are provided in English, Traditional Chinese, Spanish, Vietnamese
- Website
- Online Survey

- **Printed Outreach**

- Note: all methods are provided in English, Traditional Chinese, Spanish, Vietnamese
- Direct Mail to Residents and Businesses (over 750 letters sent to the community within a 500 foot radius of the project site)

- **Project Hotline**

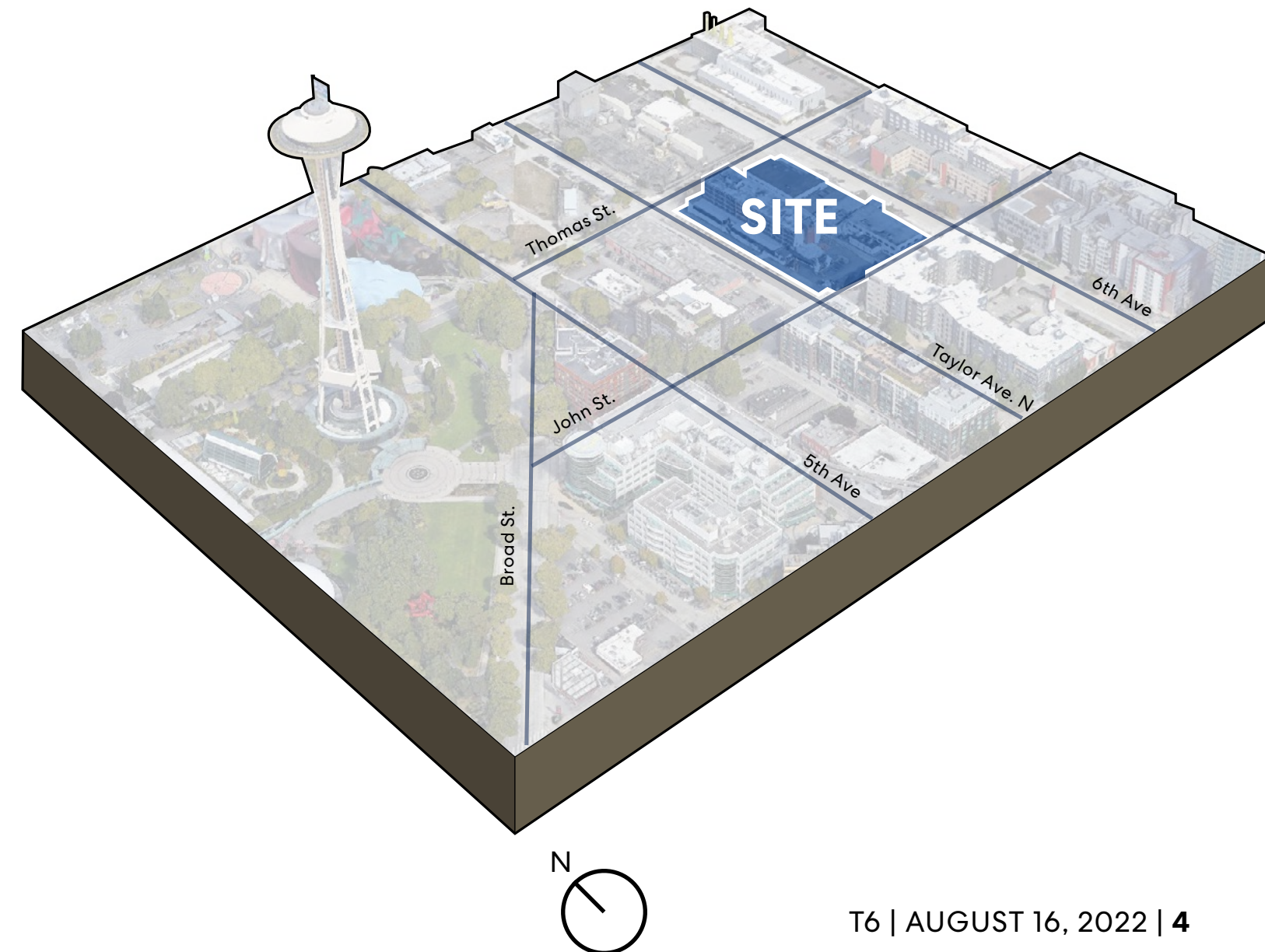
- Note: provided in English, Traditional Chinese, Spanish, Vietnamese
- Includes a voicemail script and option for community members to leave a voicemail with feedback

- **Virtual Open House Meetings**

- Two open house meetings organized using Zoom as a virtual platform

- **Community Conversations**

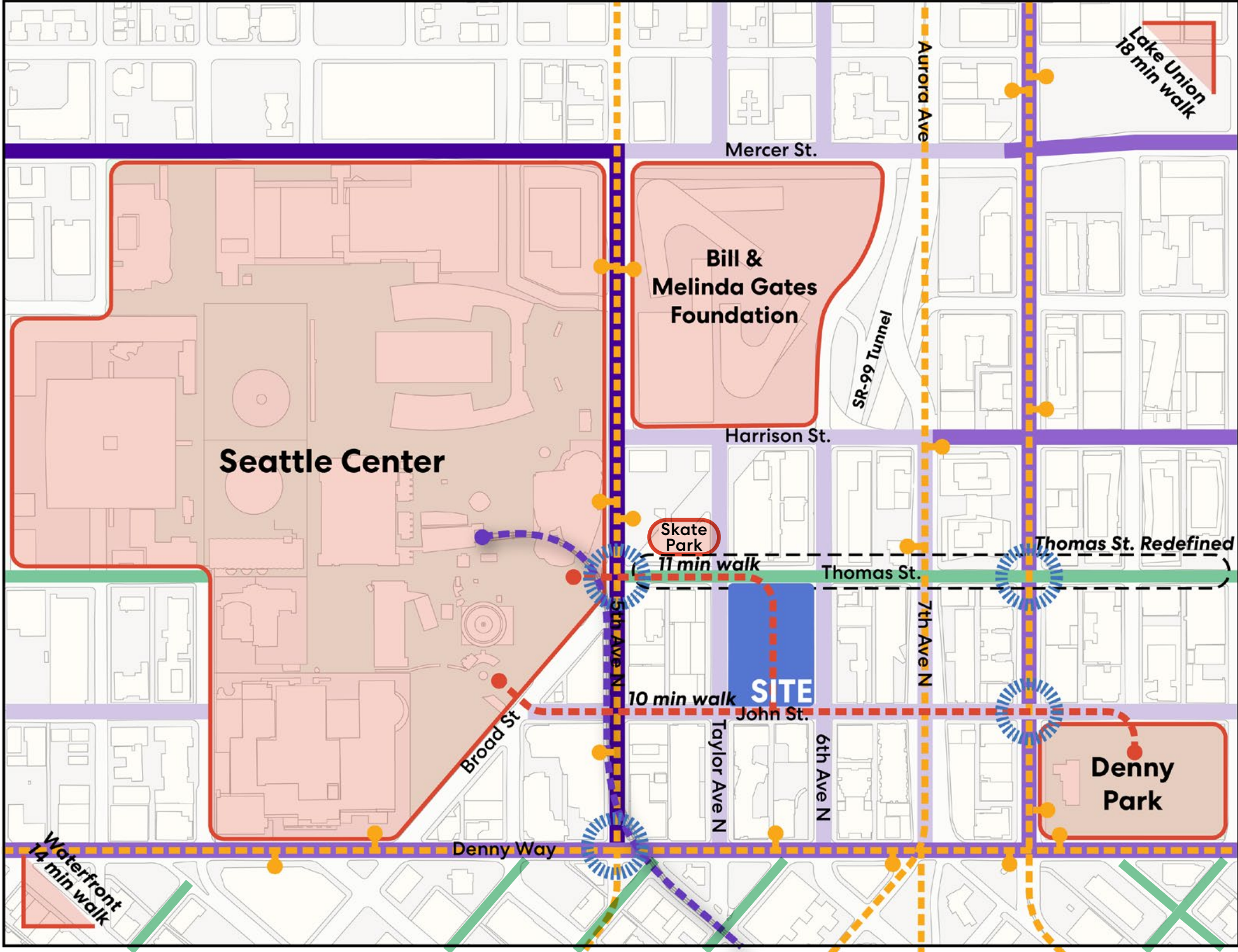
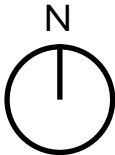
- outreach occurred to community groups in Uptown and South Lake Union, presentation occurred with the Uptown Alliance Group



PROJECT SITE AND UPTOWN NEIGHBORHOOD CONTEXT /

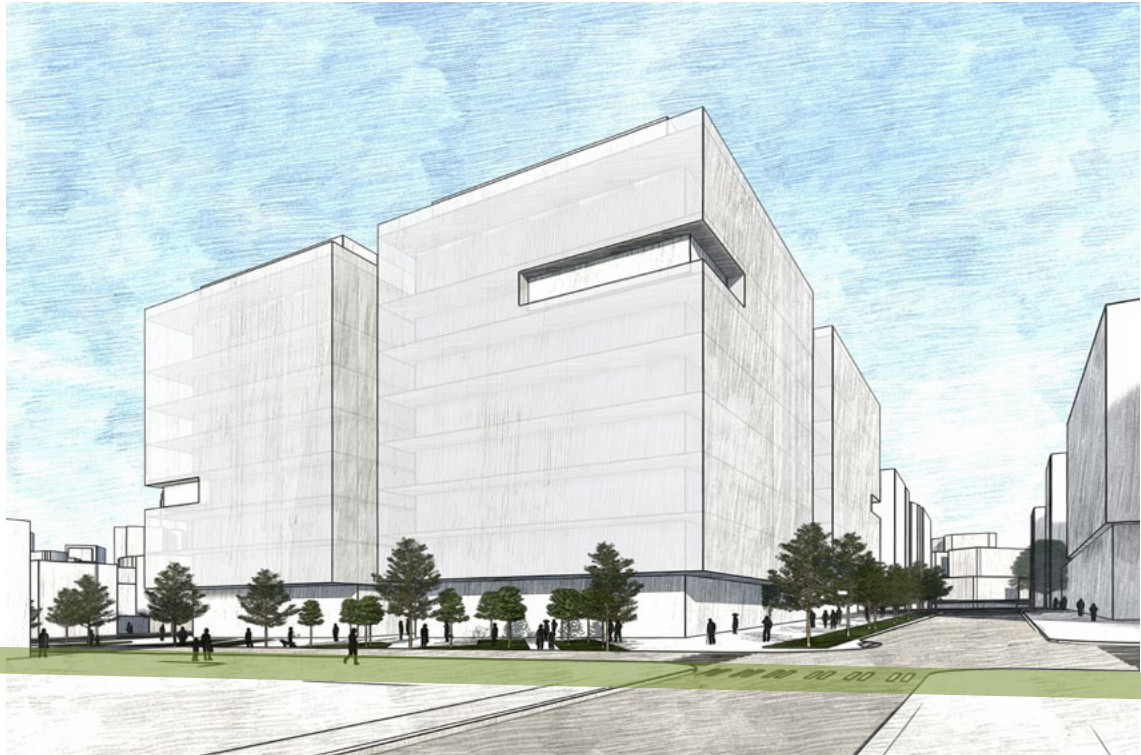
The T6 project site is located at a key Uptown neighborhood connection between the Seattle Center and South Lake Union; with the opportunity to create a unique pedestrian focused experience.

-  Connection Point
-  Point of Interest
-  Class I Pedestrian Street
-  Class II Pedestrian Street
-  Class III Pedestrian Street
-  Green Street
-  Bus Stop
-  Bus Route
-  Monorail
-  Optimum Neighborhood Connect

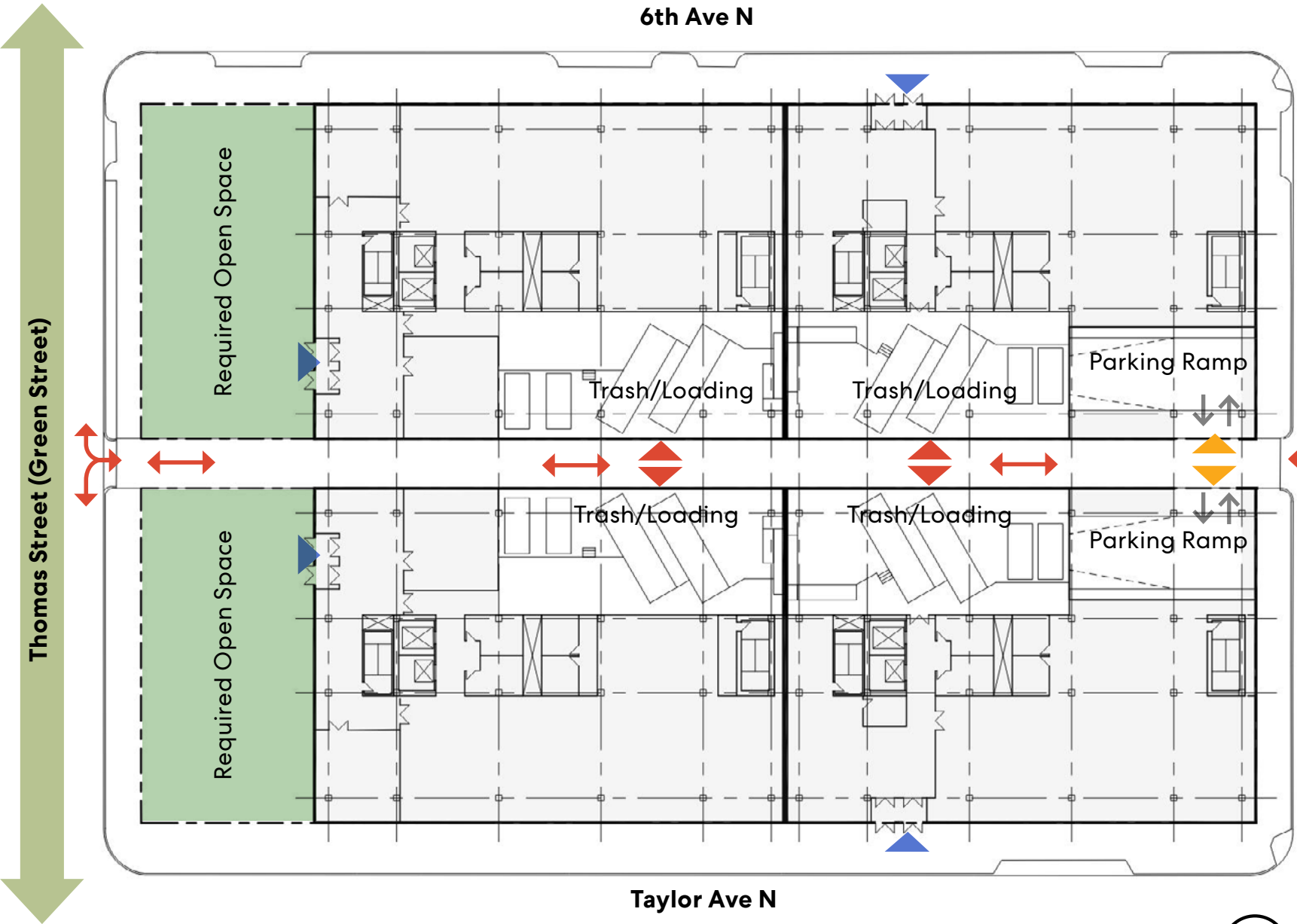


NO ALLEY VACATION /

View from Thomas and Taylor



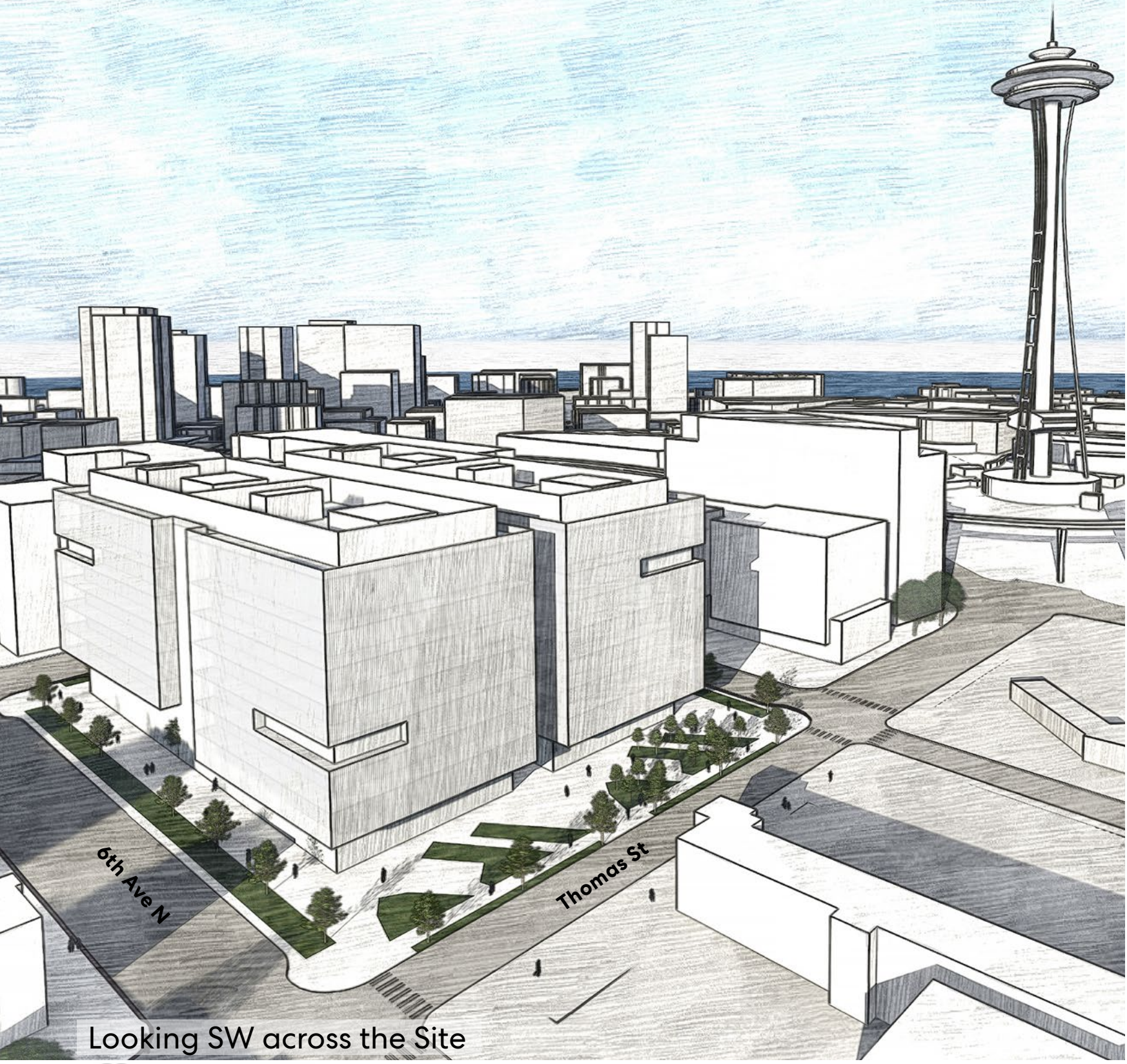
Site Plan



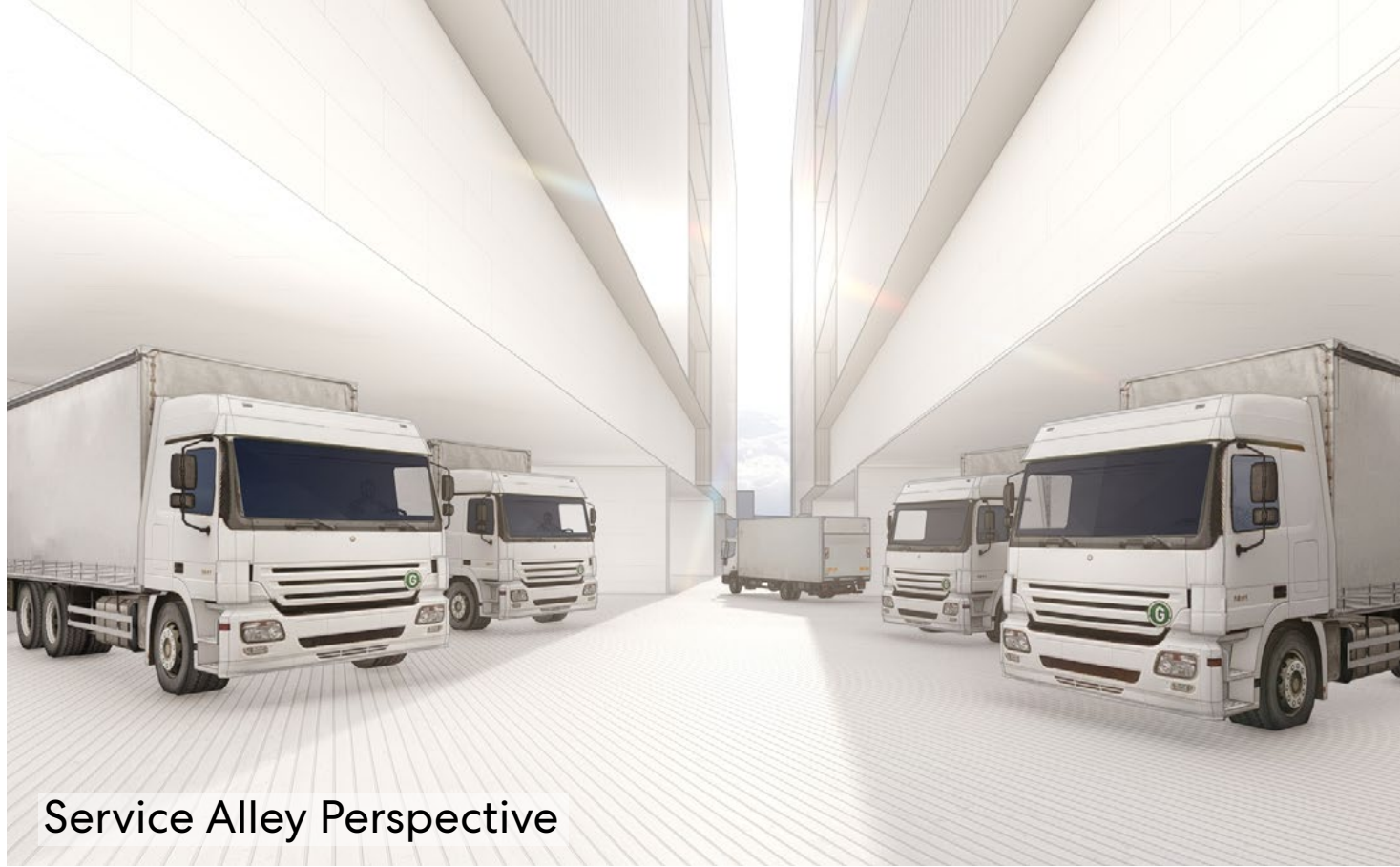
John Street

- ▶ Pedestrian Entry
- ▶ Passenger Vehicle Entry
- ▶ Service Vehicle Entry
- ↔ Two-way alley vehicular circulation
- Green Street

NO ALLEY VACATION /



Looking SW across the Site



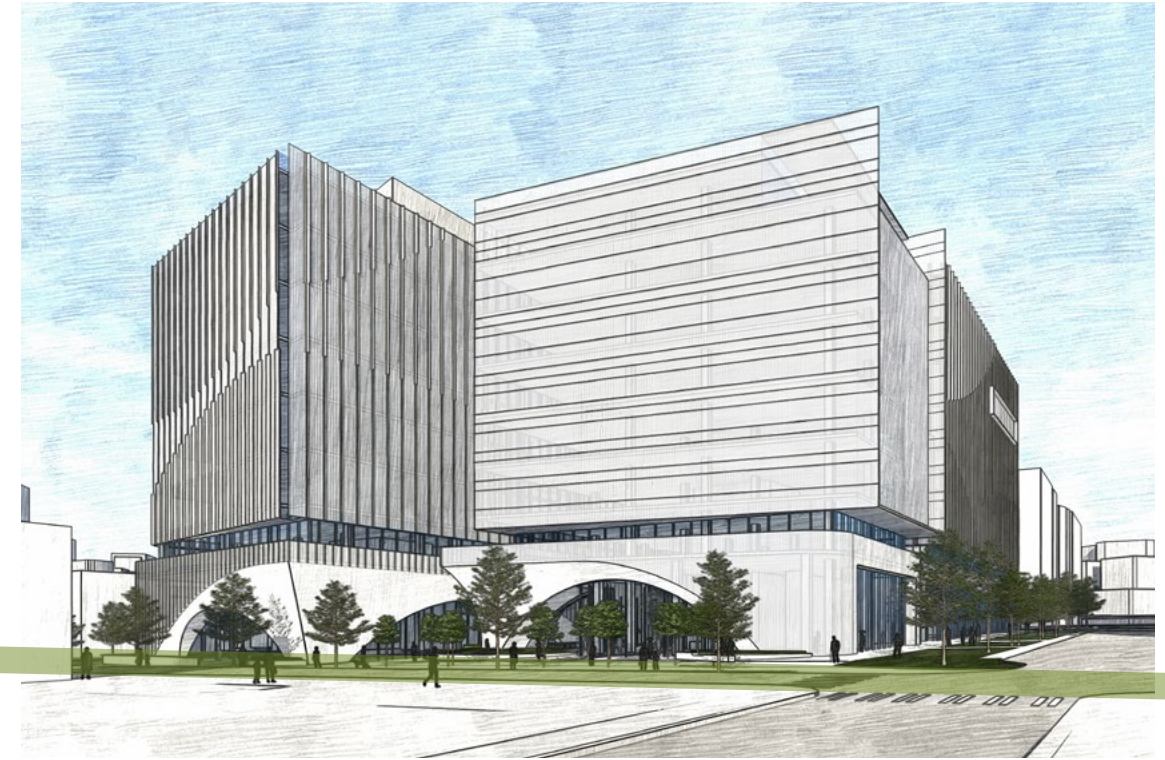
Service Alley Perspective



John St Elevations

ALLEY VACATION /

View from Thomas and Taylor



- ▶ Pedestrian Entry
- ▶ Passenger Vehicle Entry
- ▶ Service Vehicle Entry
- Green Street

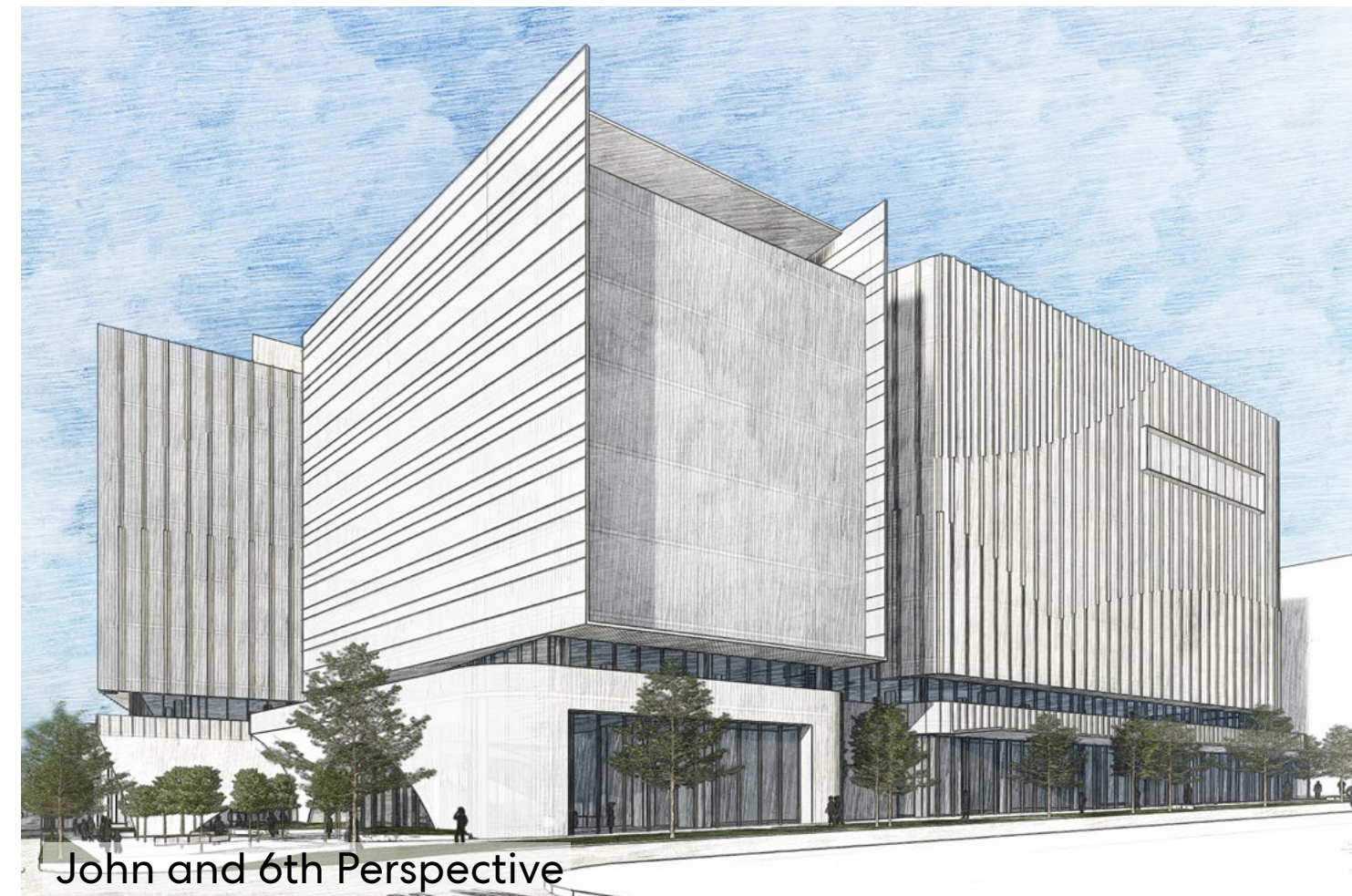
ALLEY VACATION /



Looking SW across the Site

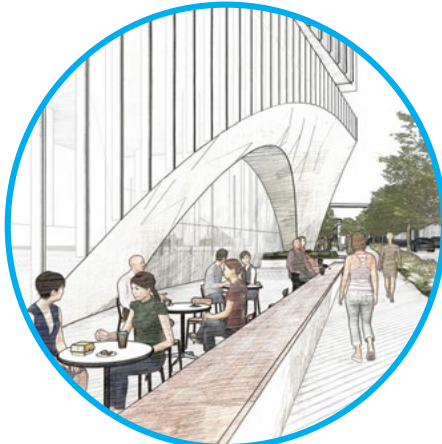


Potential Pedestrian Connection



John and 6th Perspective

PUBLIC BENEFITS CONCEPTS /



Enhanced Placemaking

- wayfinding and signage
- active design
- overhead canopies
- covered outdoor spaces



Improvements at Green Street

- voluntary building setbacks
- widened sidewalks
- new pedestrian plaza
- curb bulbs
- increased planting areas

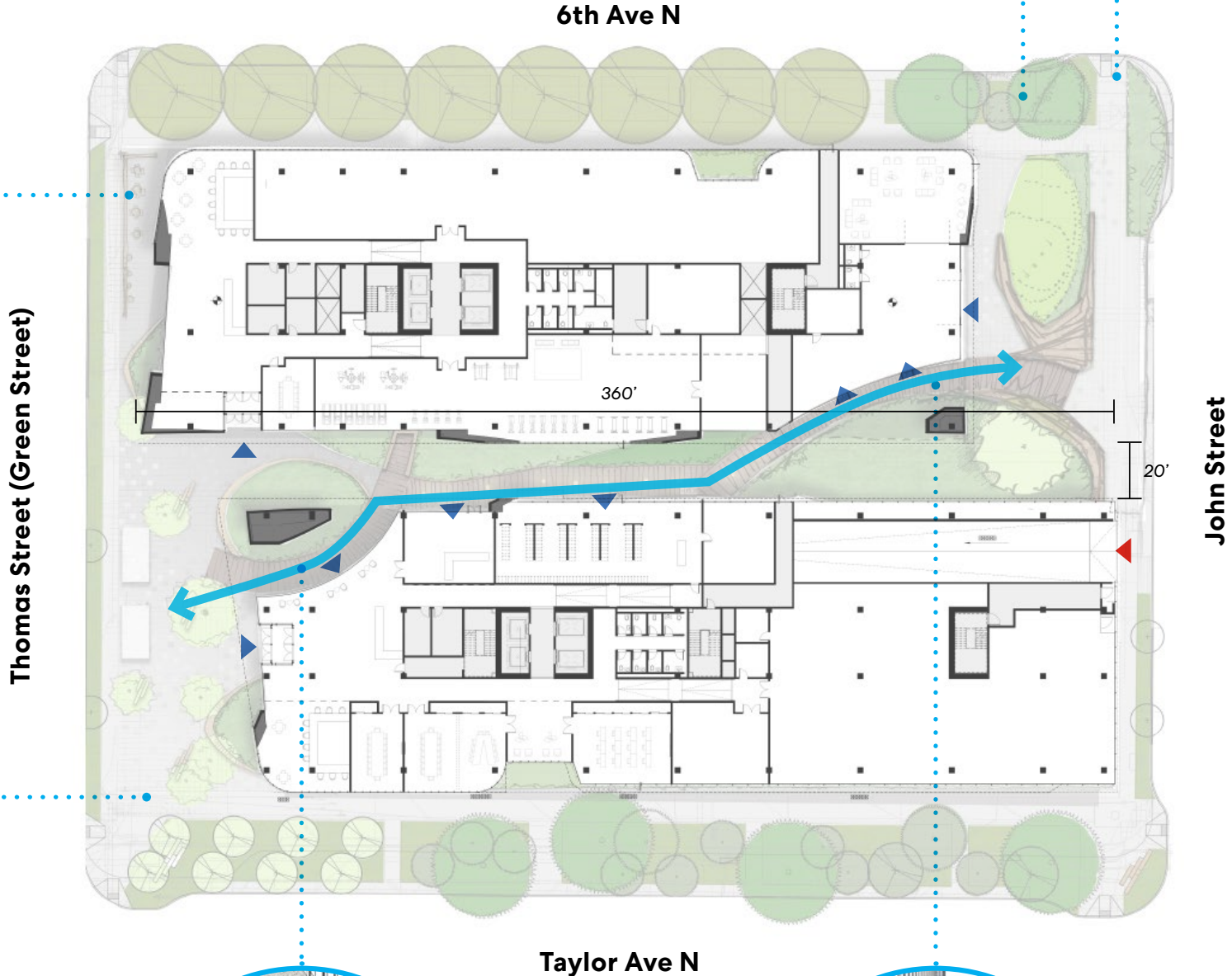


Potential Pedestrian Connection

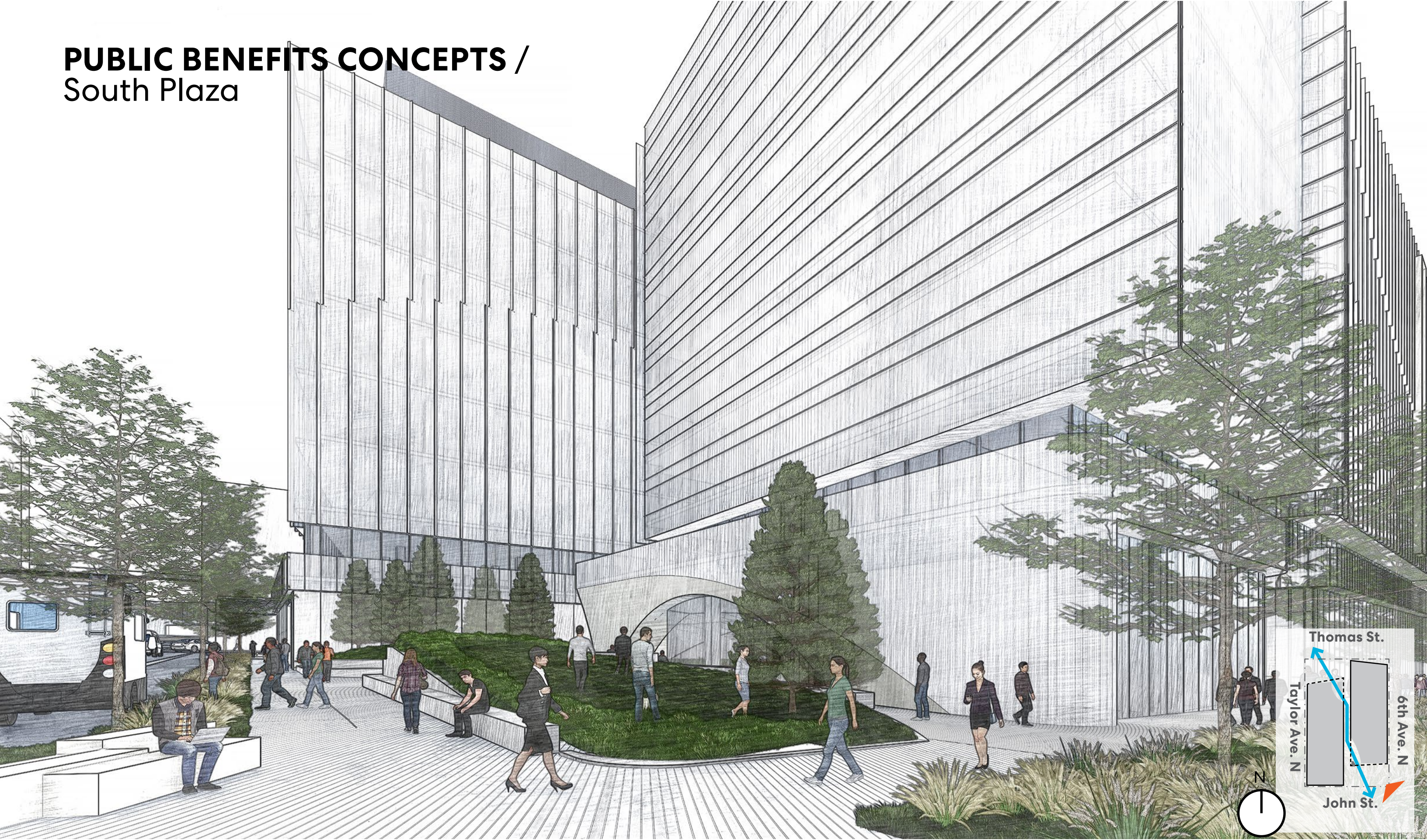


Improvements at Class III Pedestrian Streets

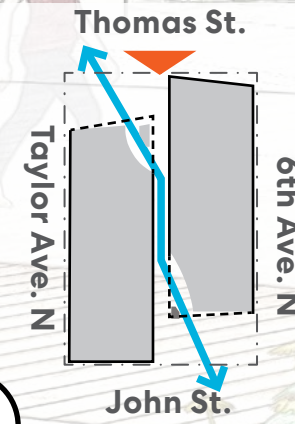
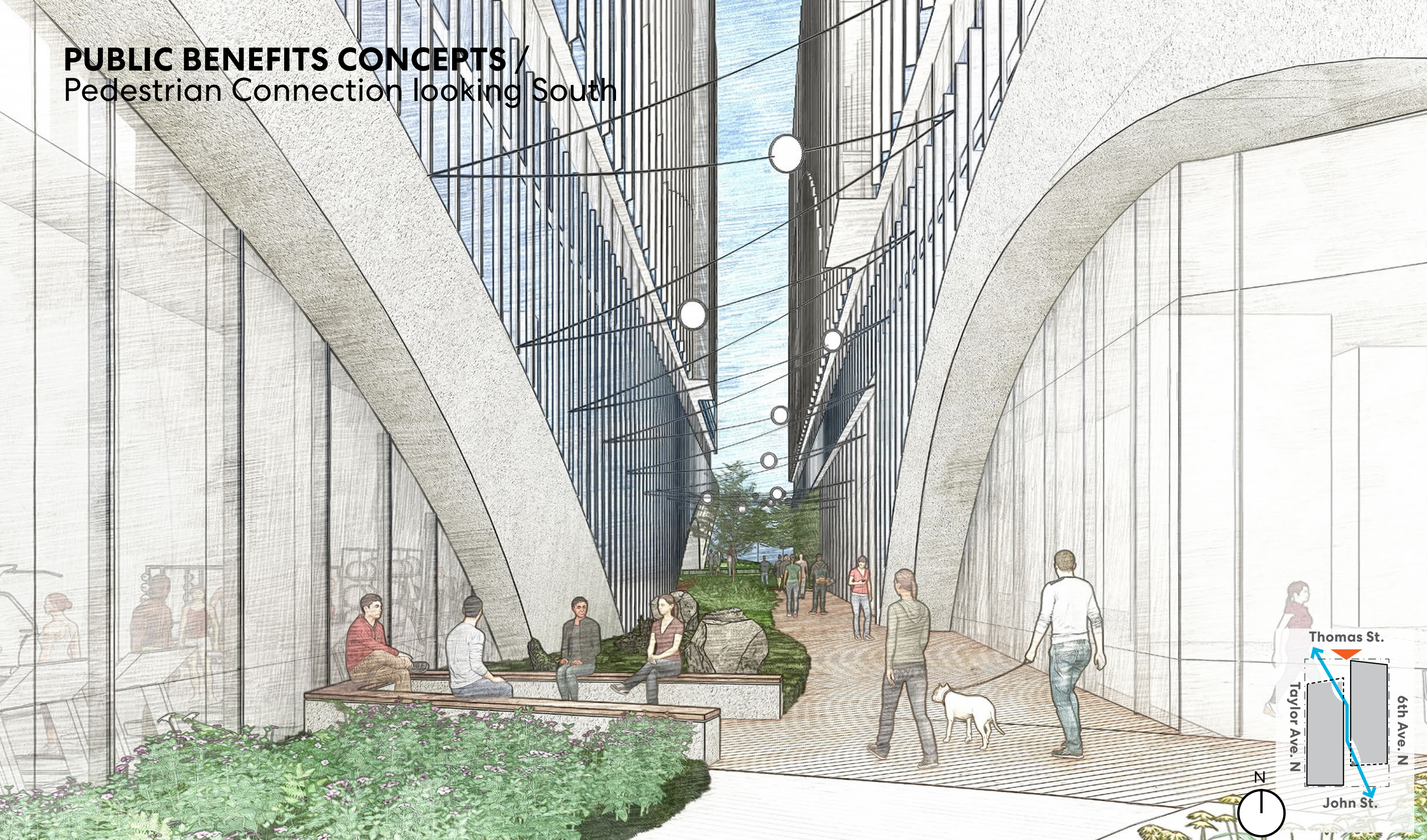
- widened sidewalks
- curb bulbs
- increased planting areas



PUBLIC BENEFITS CONCEPTS / South Plaza



PUBLIC BENEFITS CONCEPTS / Pedestrian Connection looking South



PUBLIC BENEFITS CONCEPTS / Pedestrian Connection looking North

