



**ALLEY VACATION AT BLOCK 18, EASTERN ADDITION
SEATTLE CITY COUNCIL APPROVAL**

June 2016

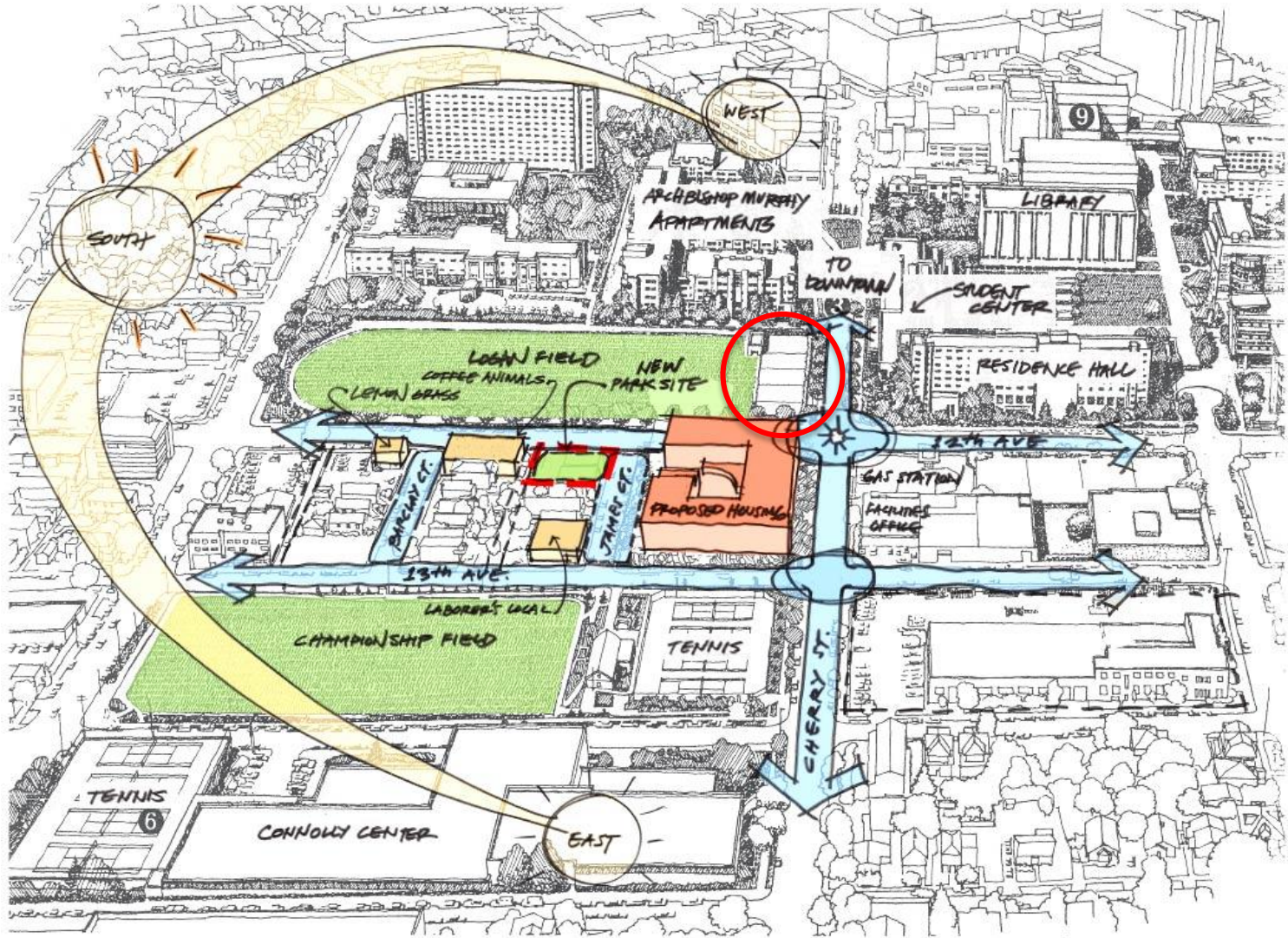
AGENDA

1. Site Overview
2. Benefits of Alley Vacation
3. Completion of Vacation

Presented by Robert Schwartz, Associate Vice President for Facilities Services



SITE: OVERVIEW



CONTEXT MAP



SITE: OVERVIEW

- 40 linear feet / 640 square feet of alley space
- Block 18, Eastern Addition

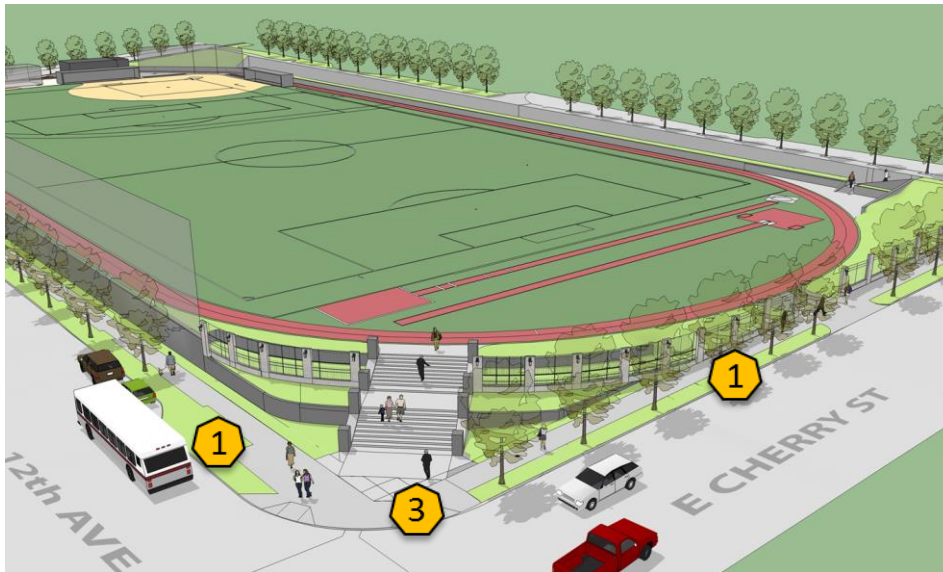


Adjacencies

1. SU Park (Logan Field)
2. Woonerf and 12th Ave Park
3. Championship Field and Tennis Courts
4. University office spaces and residence halls
5. Private residences and commercial buildings

REQUIRED BENEFITS

1. Enhance pedestrian character
2. Provide public space benefit
3. Improve curb appeal and physical connection



SU PARK



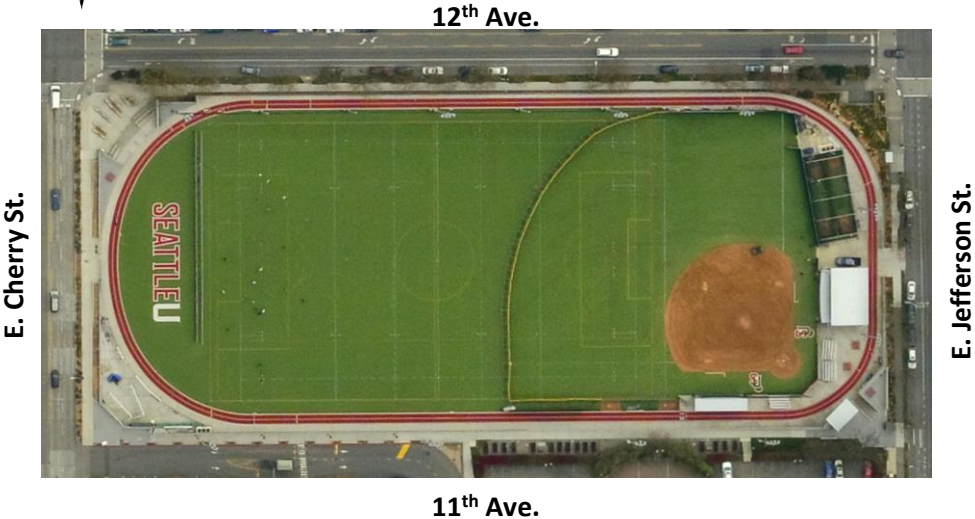
12th AVE. SQUARE PARK & WOONERF

BENEFITS DELIVERED: SU PARK

Before Improvements

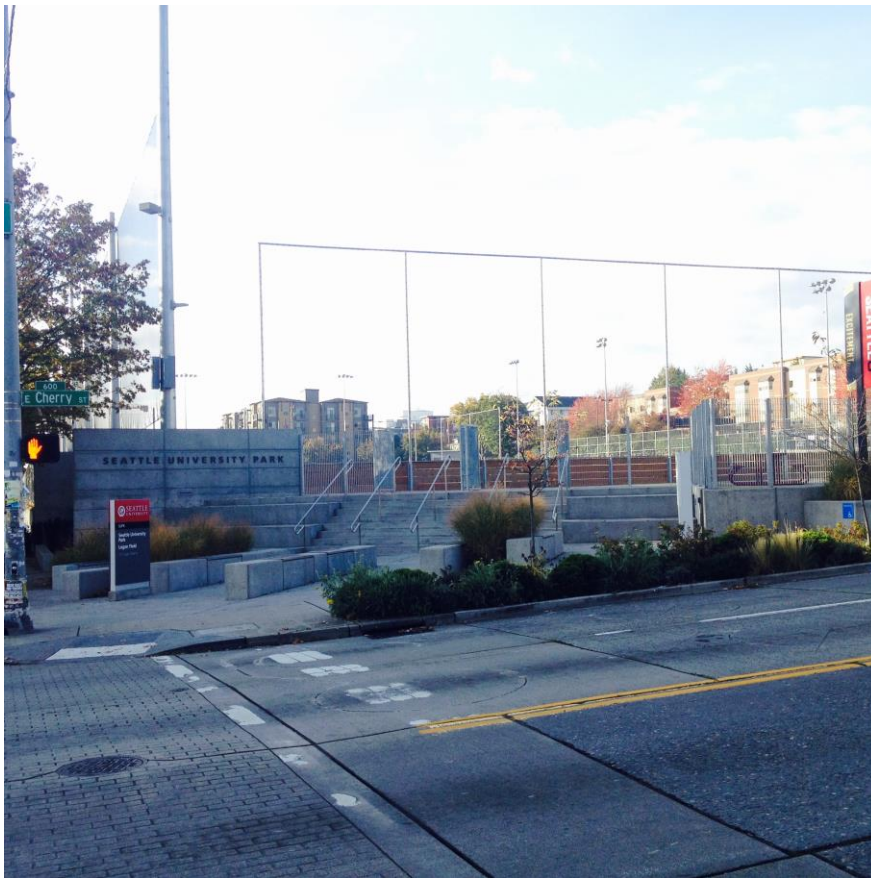


After Improvements



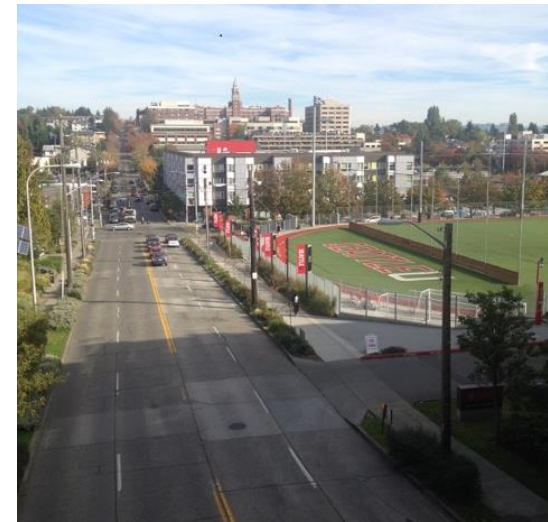
BENEFITS DELIVERED: SU PARK

After Improvements



12th Ave.

E. Cherry St.



E. Cherry St.

- Pedestrian character enhanced
- Improved curb appeal and physical connection

BENEFITS DELIVERED: E. JAMES COURT WOONERF

- Public space provided
- Pedestrian character enhanced

Woonerf / E. James Ct.



12th Ave.

NEXT STEPS

Seattle University requests Seattle City Council approval of the final legislation for the vacation of the remaining north 40 feet of alley in Block 18, Eastern Addition to the Town of Seattle.

