

Capitol Hill Housing, Central Seattle Greenways,  
and Seattle Neighborhood Greenways present:

Pike/Pine  
Protected Bike Lane

# Community Design Workshop

October 25<sup>th</sup>, 2018

A Capitol Hill EcoDistrict Forum

CO-HOSTED BY



CAPITOL HILL  
ECODISTRICT



cascade  
BICYCLE CLUB



feet first  
promoting walking communities

G S B A  
EQUITY IN ASIAN BUSINESS

P/PUNC  
Pike/Pine  
Urban Neighborhood Center



# **Pike/Pine Protected Bike Lanes Community Design Workshop**

**Brie Gyncild**

**Central Seattle Greenways**

**Joel Sisolak**

**Capitol Hill Housing/Capitol Hill EcoDistrict**

**Clara Cantor**

**Seattle Neighborhood Greenways**



welcome  
TO THE  
PIKE'S PLACE PROTECTED  
BIKELANE  
PARKING DAY

PARKING DAY 2018

RUKU  
9

BEGIN

P  
2

NO PARKING

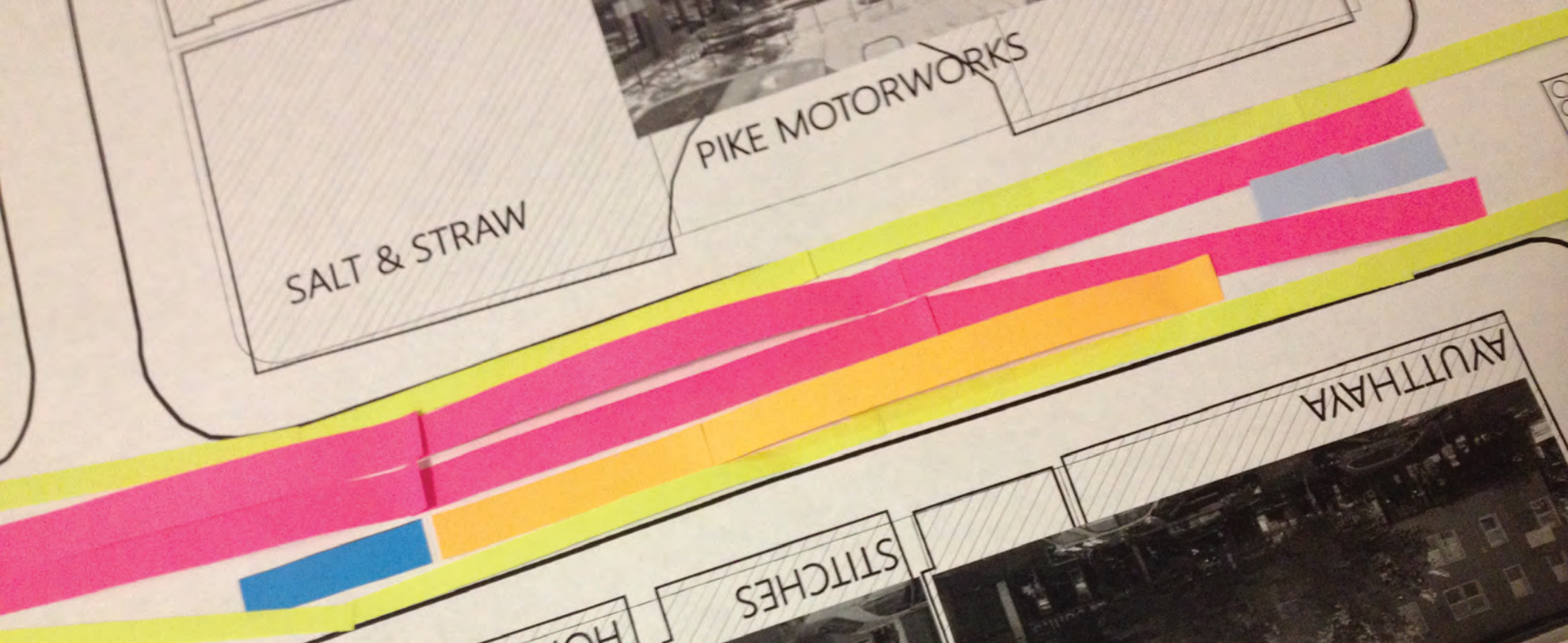
NO PARKING



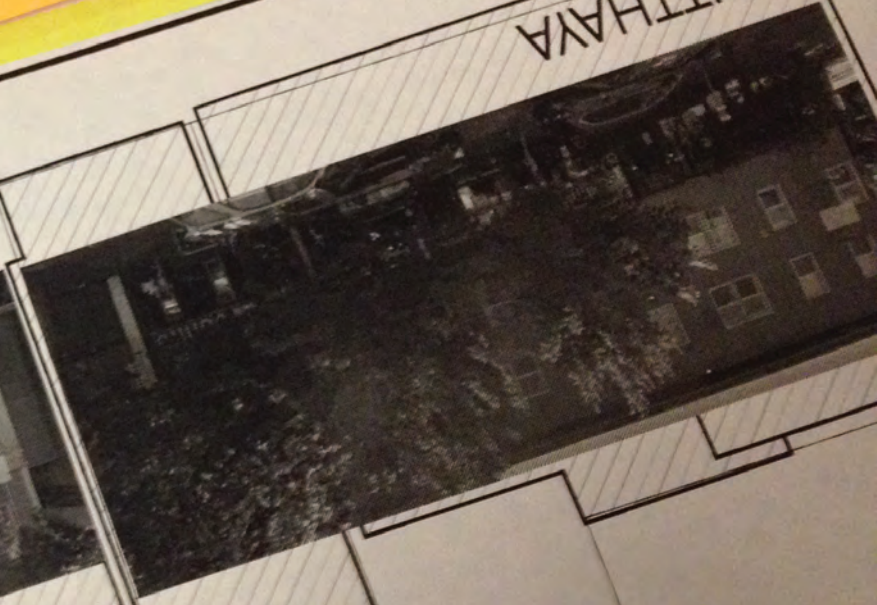


SALT & STRAW

PIKE MOTORWORKS



AYUTHAYA



STITCHES

HONEY HOLE



STON

# What perspectives do you represent, and how do you interact with the Pike/Pine corridor?



Walking



Business-owner



Resident



Biking



Senior



Working



Using transit



Deaf



Dining



Driving or riding



Parent



Shopping



Using a wheelchair



Blind



Playing



Student



Walking a dog

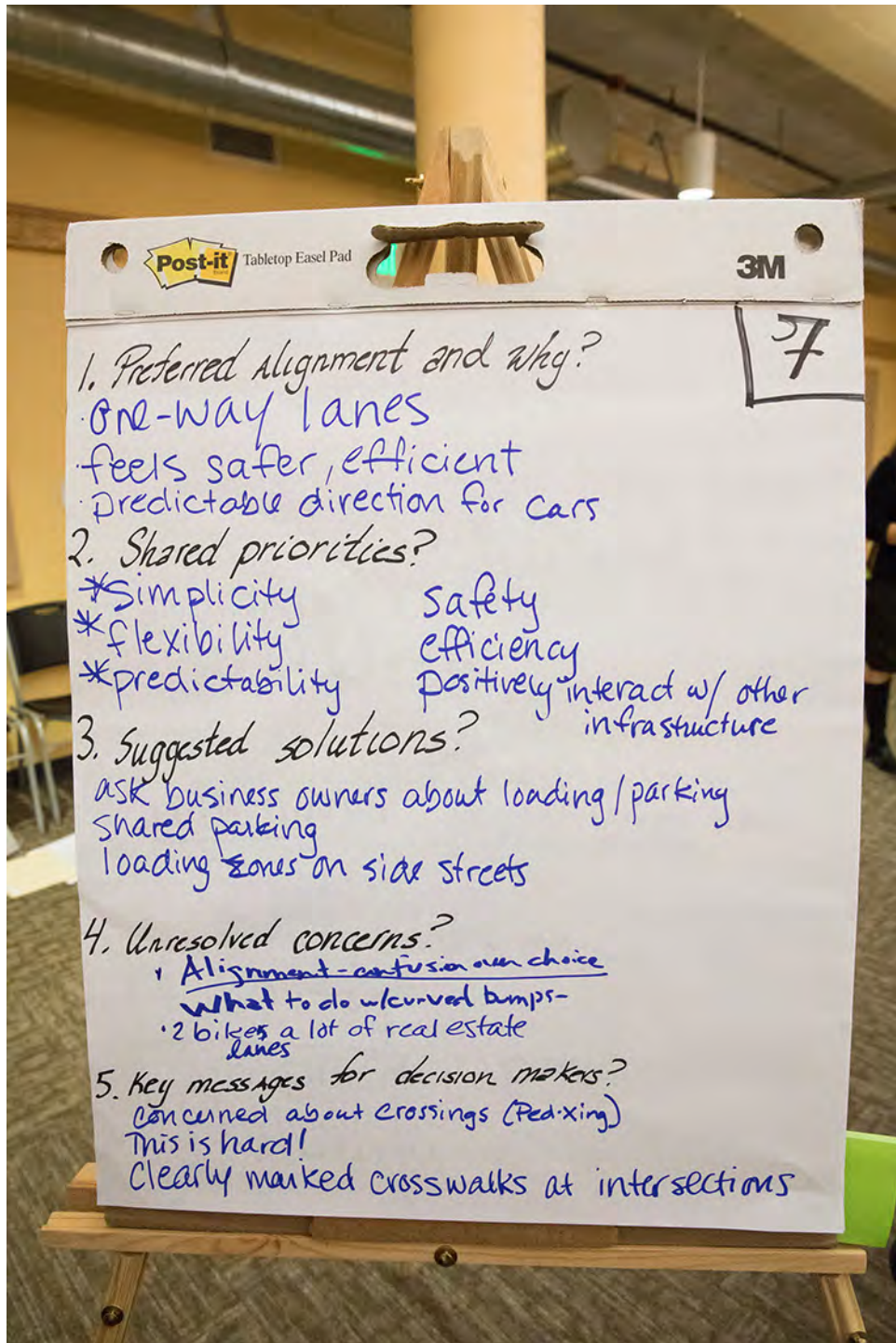
All icons from [www.flatiron.com](http://www.flatiron.com) Icons made by Freepik, except the following: The shopping bag icon was made by mynamepong ; the car icon was made by Creaticca Creative Agency; the residence icon was made by OCHA; the bicycle icon was made by Nikita Golubev; the blind icon was made by Zurb; the ASL icon was made by Scott deJonge.



MALLORÉ'S DAIRY







# Community Priorities

- **Pedestrian safety, comfort, and convenience**
- **A continuous, safe, intuitive bike route**
- **Ample, convenient loading zones for businesses and passengers**
- **Clear, predictable traffic flow for all users**

Capitol Hill Housing, Central Seattle Greenways,  
and Seattle Neighborhood Greenways present:

Pike/Pine  
Protected Bike Lane

# Community Design Workshop

October 25<sup>th</sup>, 2018

A Capitol Hill EcoDistrict Forum

CO-HOSTED BY



# **Pike/Pine Protected Bike Lanes Community Design Workshop**

**More info: [bit.ly/PikePineWorkshop](http://bit.ly/PikePineWorkshop)**

**Brie Gyncild**

CentralSeattleGreenways@gmail.com

**Joel Sisolak**

JSisolak@capitolhillhousing.org

**Clara Cantor**

Clara@seattlegreenways.org