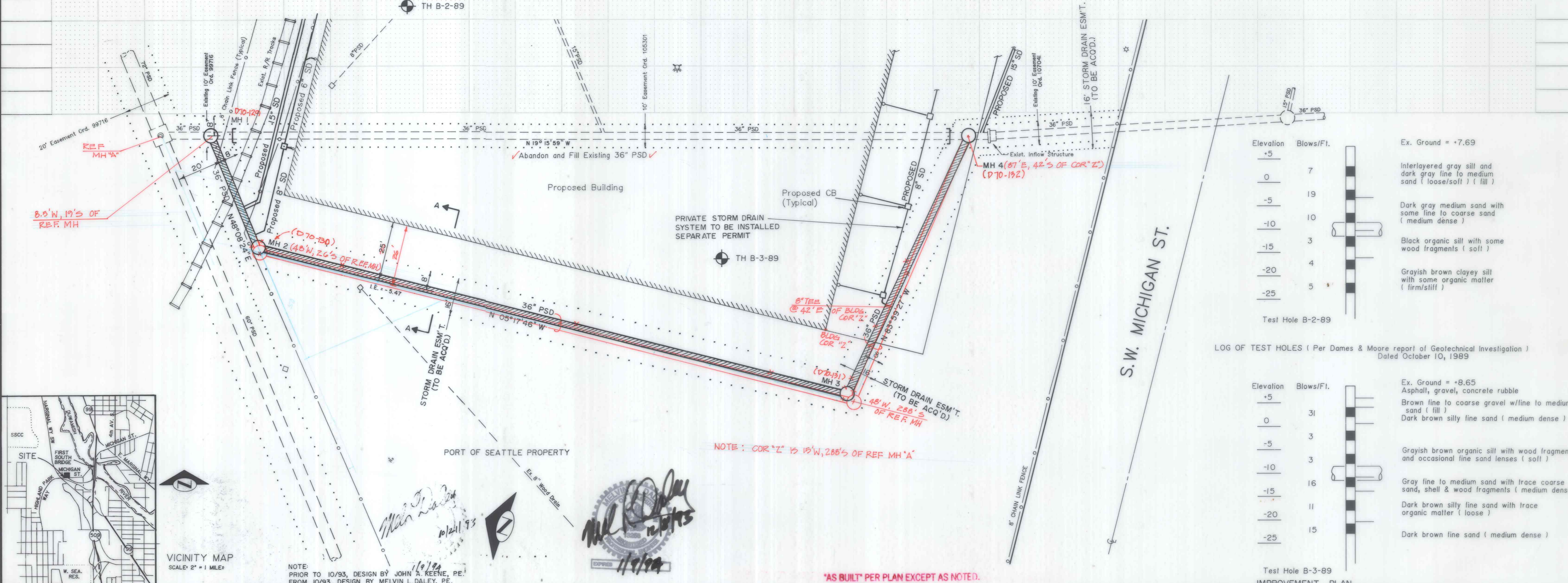
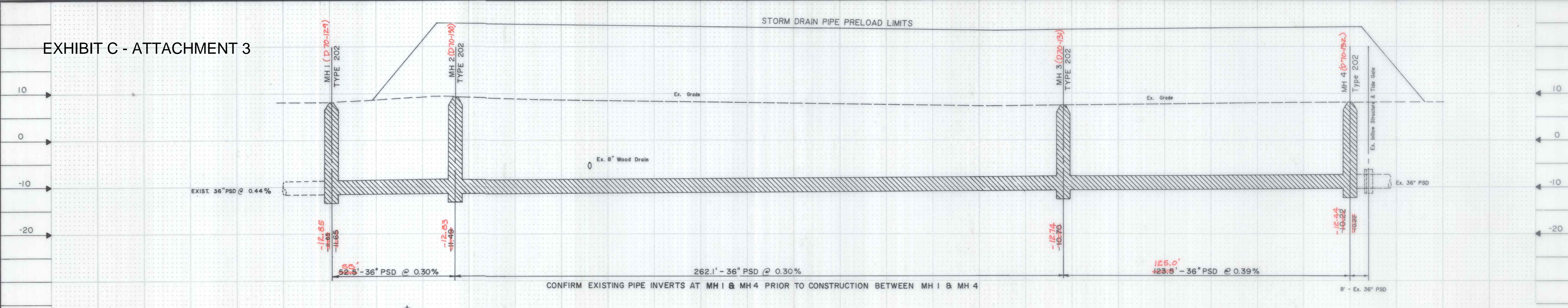


EXHIBIT C - ATTACHMENT 3



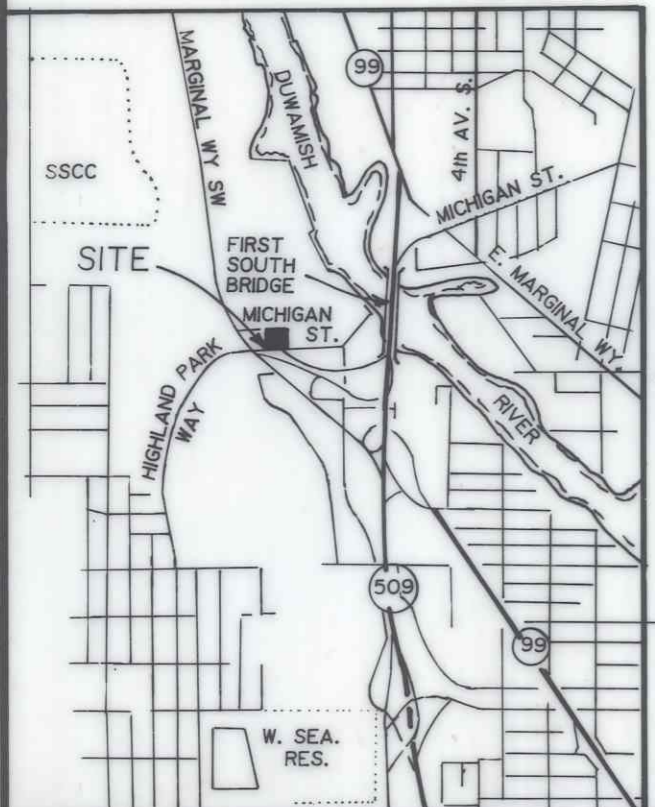
LOG OF TEST HOLES (Per Dames & Moore report of Geotechnical Investigation)
Dated October 10, 1989

Elevation	Blows/Ft.	Soil Description
+5	7	Ex. Ground = +7.69 Interlayered gray silt and dark gray line to medium sand (loose/soft) (fill)
-5	19	Dark gray medium sand with some fine line to coarse sand (medium dense)
-10	10	Black organic silt with some wood fragments (soft)
-15	3	Grayish brown clayey silt with some organic matter (firm/stiff)
-20	4	
-25	5	

Test Hole B-2-89

Elevation	Blows/Ft.	Soil Description
+5	31	Ex. Ground = +8.65 Asphalt, gravel, concrete rubble
0	3	Brown fill to coarse gravel w/line to medium sand (fill) Dark brown silty fine sand (medium dense)
-5	3	Grayish brown organic silt with wood fragments and occasional fine sand lenses (soft)
-10	3	
-15	16	Gray fine to medium sand with trace coarse sand, shell & wood fragments (medium dense)
-20	11	Dark brown silty fine sand with trace organic matter (loose)
-25	15	Dark brown fine sand (medium dense)

Test Hole B-3-89



VICINITY MAP
SCALE: 2" = 1 MILE

NOTE:
PRIOR TO 10/93, DESIGN BY JOHN A. KEENE, P.E.
FROM 10/93, DESIGN BY MELVIN L. DALEY, P.E.

"AS BUILT" PER PLAN EXCEPT AS NOTED.

TOWNSEND - CHASTAIN & ASSOC., INC.
SURVEYORS - ENGINEERS
DEVELOPMENT CONSULTANTS
409 SOUTH 3rd AVENUE
KENT, WASHINGTON 98032
(206) 854-2043

JOHN A. KEENE
REGISTERED PROFESSIONAL ENGINEER
8/90

APPROVED BY THE
SEATTLE ENGINEERING DEPARTMENT
Dec 27 1993
Kirk T. Jones

NAME OR INITIALS AND DATE	INITIALS AND DATE
DESIGNED: J.A.K. 8-90	REVIEWED: J.P.S.
CHECKED: D.G.L. 8-90	PLAN REVIEW: M.L.D.
DRAWN: D.G.L. 8-90	RECEIVED: M.L.D.
CHECKED: [Signature]	REVISED AS BUILT: BRC 12/1/94
DESIGN REVIEW: [Signature]	

THE CITY OF SEATTLE
DEPARTMENT OF ENGINEERING
PRIVATE CONTRACT
WORK ORDER No. WS 4010 APPROVED
PERMIT No. S-3514 APPROVED
SCALE: H. 1" = 20' V. 1" = 10' INSPECTOR'S BOOK NO. 20x12-1

PORT OF SEATTLE TERMINAL 115
STORM DRAIN RELOCATION

JOB NO. PC
R/W.
CO.
VAULT PLAN No. 877-53
SHEET 1 OF 2