

Christie Park Art Donation

Civic Development, Public Assets and Native Communities Committee

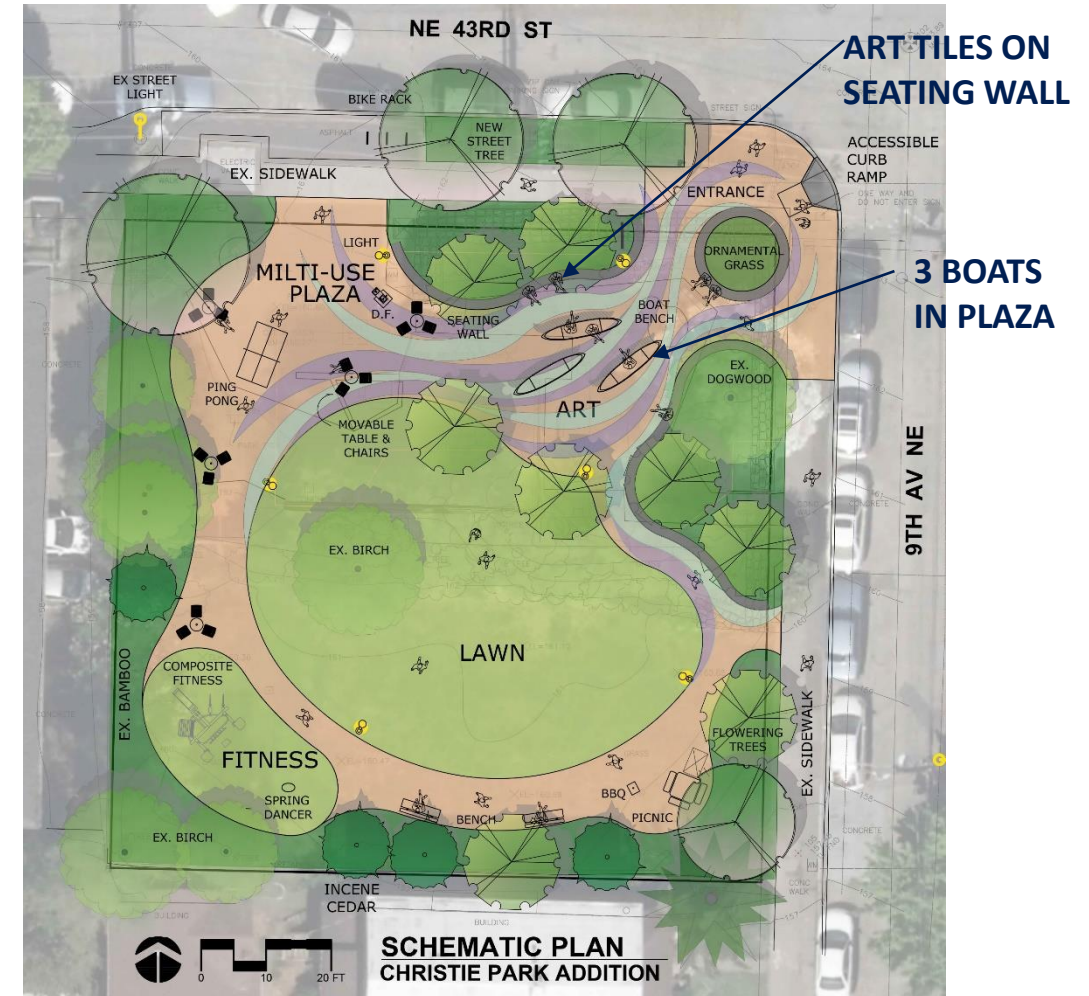
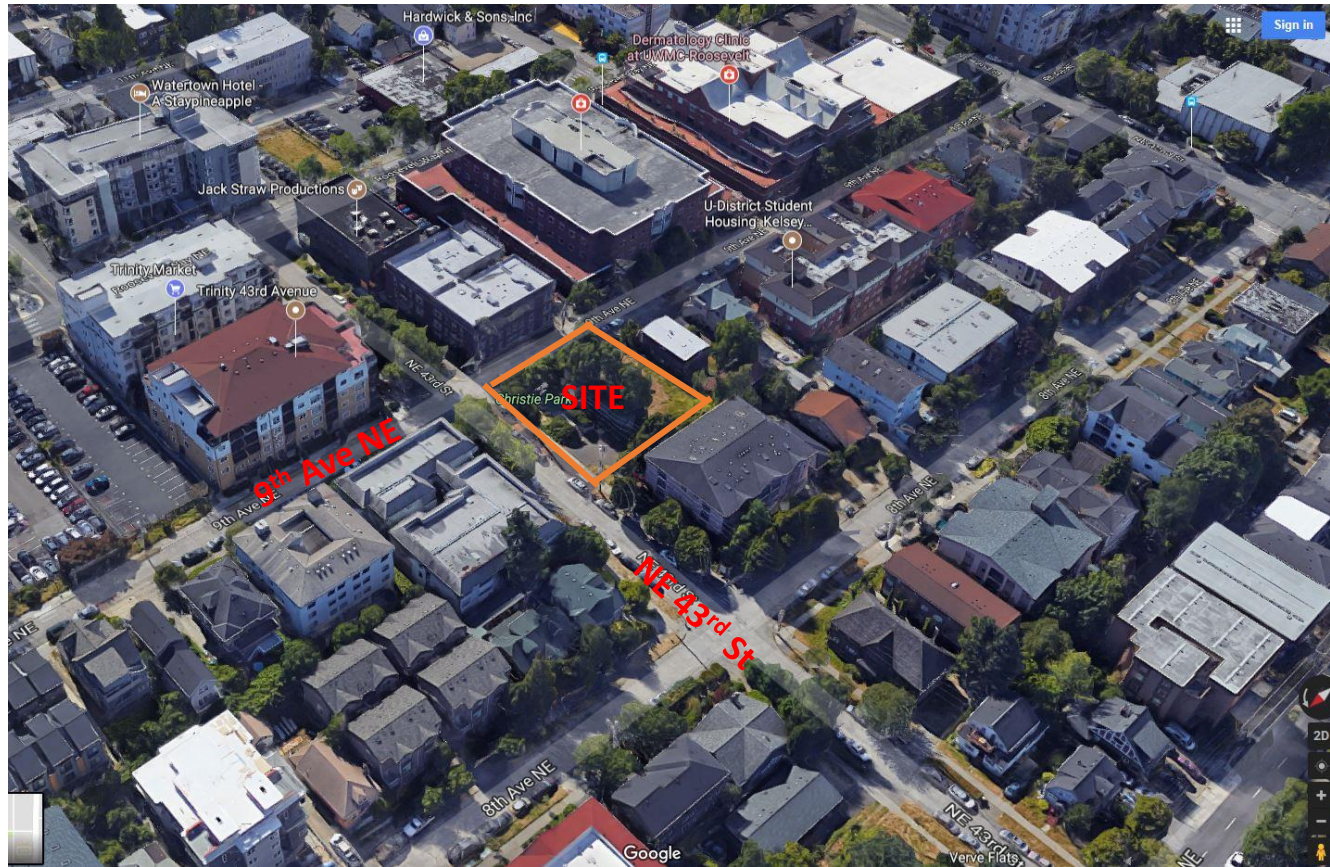
July 31, 2019

Seattle Parks and Recreation



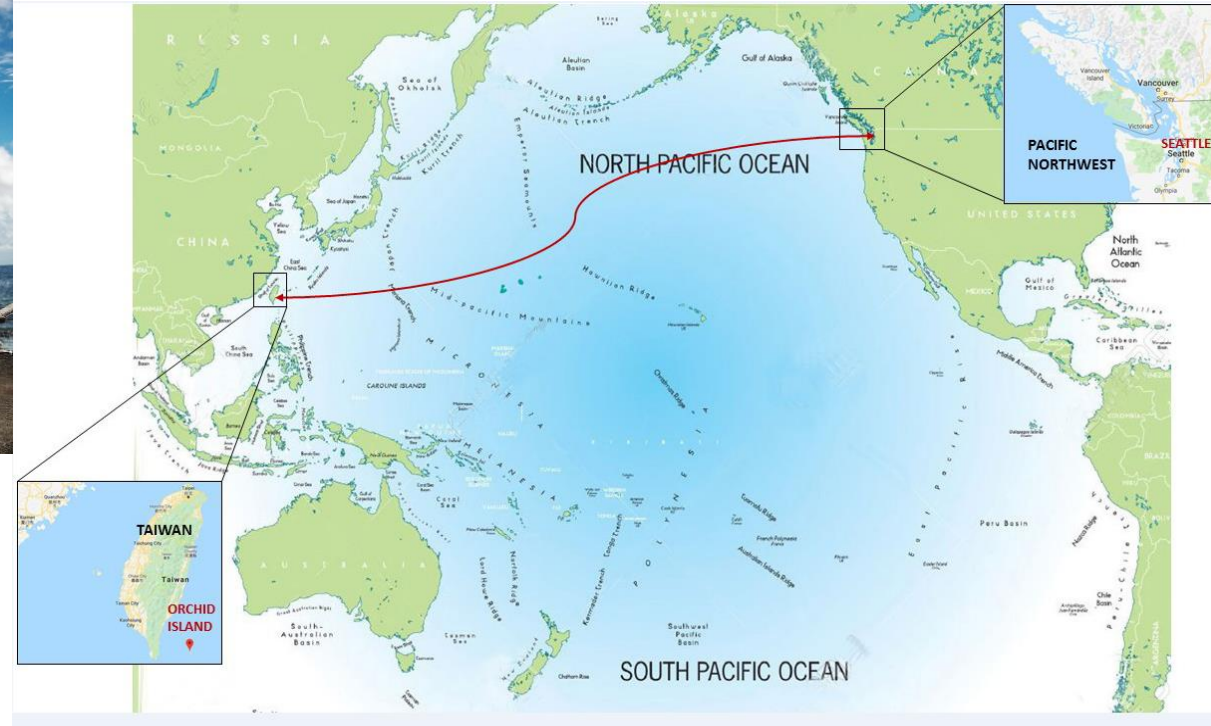
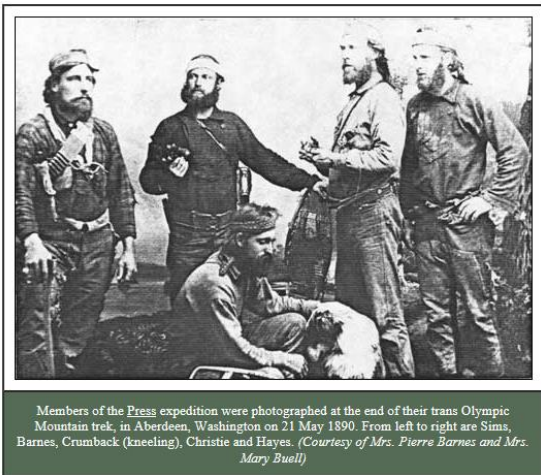
City of Seattle

Art Location: Christie Park, NE 43rd St./9th Ave. NE



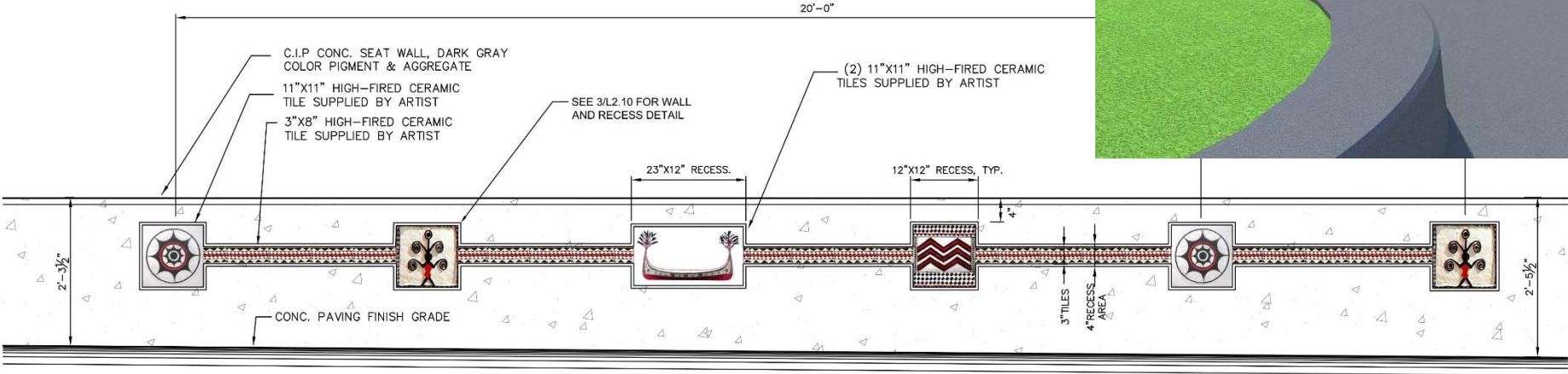
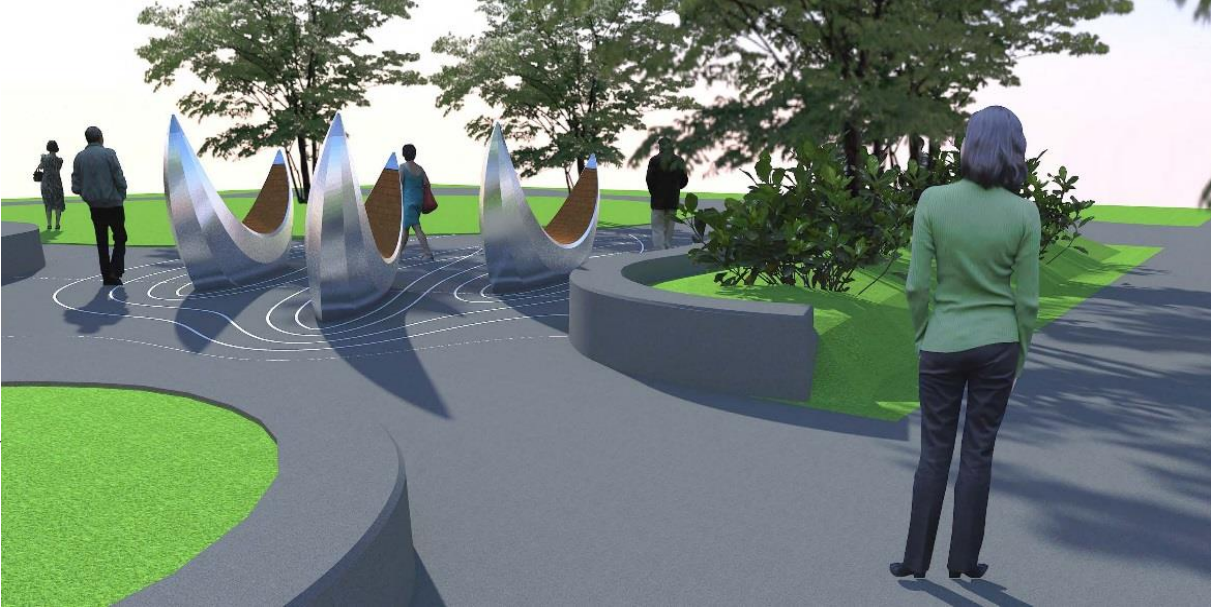
About the 'Explorer Voyage' Art

- A gift to Seattle Parks and Recreation from Friends of Christie Park, a group of Taiwanese-Americans, to celebrate the friendship between the people of Seattle and Taiwan
- It also reflects the explorer spirit of James Christie, the park's namesake, and college students from the University of Washington and its strong rowing culture and history.



Explorer Voyage Artwork

- Designed by Paul Sorey, the artwork consists of 3 fabricated steel boats with wood slatting for bench seating, originating from Taiwanese tribal boats from Orchid Island. The art tiles represent native Taiwanese boat culture.
- The artwork will be installed in a plaza as part of the Christie Park Addition Development Project slated for construction in 2019 or early 2020.
- The donation includes a \$6,000 endowment for maintenance of the art pieces.



Public Outreach & Community Involvement

- Seattle Parks and Recreation collaborated with the Friends of Christie Park and the community during the public process and public meetings associated with the Christie Park Addition Development Project
- U District Partnership is the fiscal sponsor for donation and maintenance funding



Questions?

