



# GenPride

[www.genprideseattle.org](http://www.genprideseattle.org)



## Origins of GenPride

The gap in services for older LGBTQ adults was first identified by a research project conducted by Aging with Pride, a UW school of social work program.

Older adults face higher levels of anxiety, isolation, and health challenges—and older LGBTQ adults are more at risk for these outcomes and may face discrimination.

- **Only 15%** of LGBTQ seniors access senior services, and that 15% fear accessing healthcare services outside of the LGBTQ community
- **52%** of older LGBTQ adults feel that they lack companionship
- **54%** of older LGBTQ adults feel isolated from others

*These statistics are reflected among the **27,000** older LGBTQ adults in King County*

CITATION: AGING WITH PRIDE: NATIONAL HEALTH, AGING, AND SEXUALITY/GENDER STUDY (NHAS)

Karen I. Fredriksen-Goldsen, PhD, Hyun-Jun Kim, PhD



# GenPride: We're here for older LGBTQ adults

GenPride is a nonprofit dedicated to serving and empowering older LGBTQ adults and their families. Since 2015, we have filled a critical gap in our community: services designed and tailored around older LGBTQ adults, addressing challenges identified by them.



**COMMUNITY ROOTS**  
— HOUSING —

# Community Roots Housing

We believe in quality places to live from people from all walks of life. We develop and manage affordable homes for over 2,000 residents across the Seattle area. We offer affordable homes in nearly 50 buildings close to schools, jobs, and transit so families and individuals can set down roots and thrive.

# Pride Place

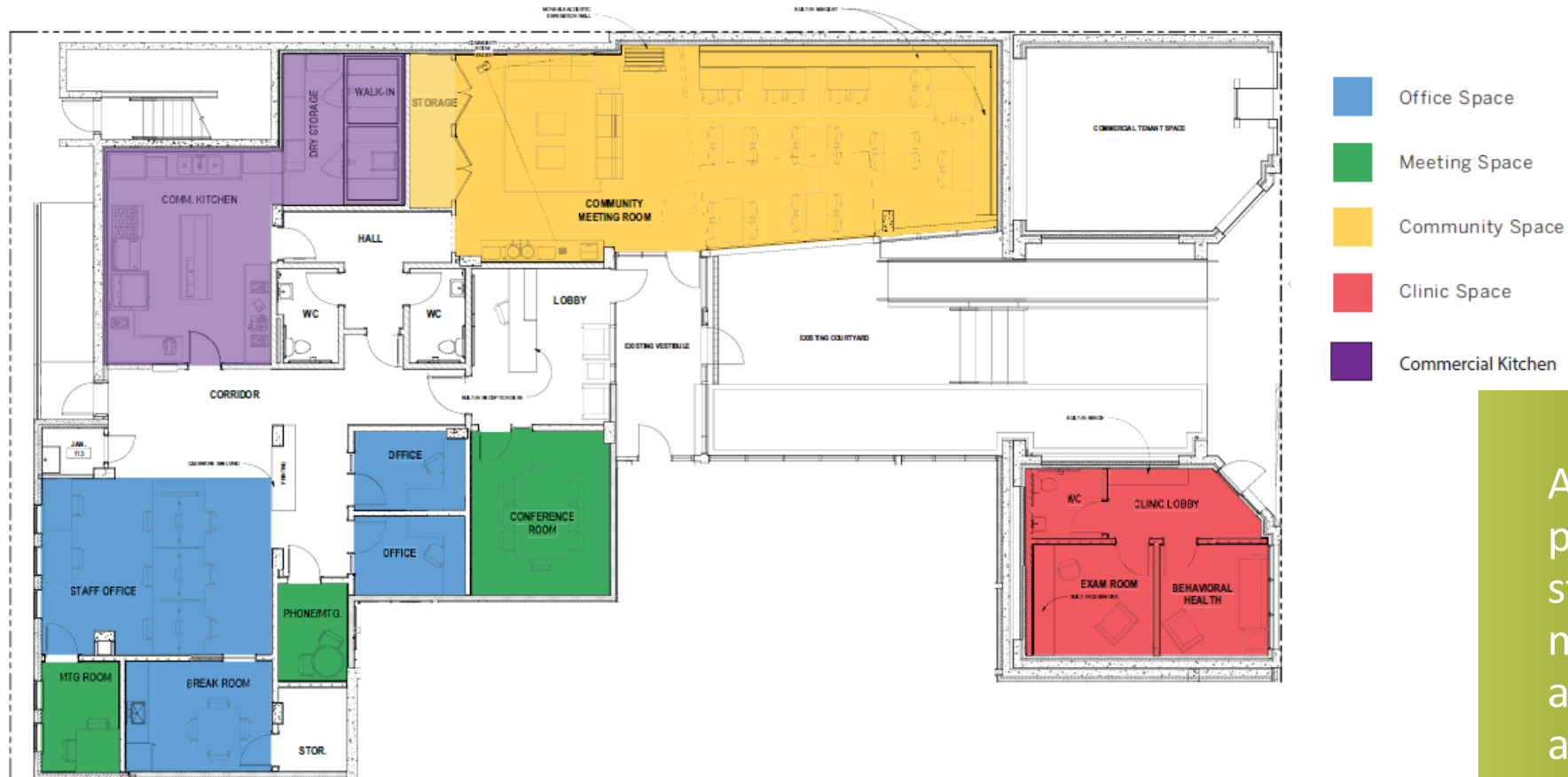
LGBTQ-Affirming Affordable Senior Housing  
& Senior Community Center  
Open in Summer 2023!

**118**

affordable  
homes for  
seniors



# Our First LGBTQ Senior Community Center



A 4,400 square foot floor plan with offices for staff, a community meeting space with a commercial kitchen, and room dedicated to healthcare services.





Community Gathering Space rendering

# GenPride planned services

- Provide affordable meals for seniors with an on-site community kitchen and dining space.
- Improve wellness, support, and social network to combat health challenges and isolation by providing recreational, educational, and an on-site health services center
- Caregiver support, case management, LGBTQ-friendly referrals
- Facilitate intergenerational LGBTQ mentor and chat programs
- Trans-specific referrals and support
- Train regional senior centers and housing providers on how to include culturally competent care in an LGBTQ-affirming environment
- Serve older LGBTQ adults and their families in King County and beyond



# Pride Place Capital Project Funding

## SOURCES

Low Income Housing Tax Credit Equity	\$19.9M
Permanent Debt (Residential)	\$9.2M
City of Seattle Office of Housing	\$9.8M
Washington State Housing Trust Fund	\$3.5M
King County	\$1M
Permanent Loan (Commercial)	\$1.5M
Community Roots Housing equity	\$0.5M
Deferred Developer Fee	\$2.5M
Capital Campaign	\$4.3M
<b>TOTAL</b>	<b>\$52.2M</b>

# Rise Together Campaign

**\$40 M** goal

More than  
**\$28M** raised to date

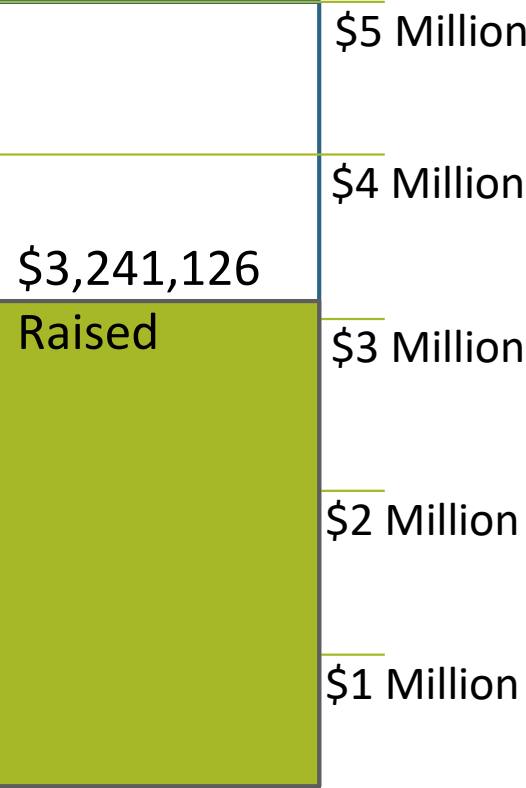
**\$12M** left to raise



White Center  
Community  
Development  
Association



GenPride \$5M Campaign  
Funding Status as of 3/2022  
\$1.8 Million Needed



**Phase 1: Cold Shell**  
Total Cost: \$2M  
Scheduled completion: Oct 2022

**\$800K Needed**  
Bridge loan allowed construction to happen while we raise funds.

**\$1.2M Raised**  
Monthly construction bills will be pulled from these funds first.  
  
Bridge loan will only be necessary if we don't raise funds during this phase of construction.

**Phase 2: Tenant Improvements**  
Total Cost: \$2.3M  
Scheduled completion: July 2023

**\$300K Needed**  
Remaining amount needs to be raised via our fundraising or grants

**\$2M Raised**  
Monthly construction bills will be pulled from these funds first.



**Phase 3: Transitional Fund**  
Total Cost: \$700K  
Scheduled completion: Dec 2024

**\$700K Needed**  
The significant increase in our programming space will require raising unrestricted funds that allow for the additional costs of the new space.

- NEW EXPENSES:
- A kitchen/dining operation
  - A health services center
  - Property costs
  - Additional staff costs



# Benefit for Pride Place

**May 15, 2022**



## **Out & Proud: Honoring our LGBTQIA+ Elders**

**More details to follow.**

Save the date! Rain or shine, in-person and virtual.

[www.genprideseattle.org](http://www.genprideseattle.org)

# Pride Place Project Status & Timeline





# Impact of Concrete Strike







# GenPride

[www.genprideseattle.org](http://www.genprideseattle.org)

For more information, please contact  
Steven Knipp, Executive Director  
206-800-1226 (direct)  
[Steven@genprideseattle.org](mailto:Steven@genprideseattle.org)